



UNITED STATES
NUCLEAR REGULATORY COMMISSION
WASHINGTON, D.C. 20555-0001

August 6, 2013

MEMORANDUM TO: Rebecca Giitter, Administrative and Litigation Analyst

FROM: Twana Ellis, Program Analyst

SUBJECT: PACIFIC GAS & ELECTRIC COMPANY
(DIABLO CANYON NUCLEAR POWER PLANT, UNITS 1 AND 2)
DOCKET NOS. 50-275-LR and 50-323-LR
ASLBP NO. 10-890-01-LR-BD01
WRITTEN LIMITED APPEARANCE STATEMENT

Dear Ms. Giitter,

The Atomic Safety and Licensing Board handling the above-captioned adjudication recently received the enclosed communication. While it does not constitute evidence, we deem it to be a limited appearance statement filed pursuant to 10 C.F.R. § 2.315(c).

On behalf of the Diablo Canyon Board, I request that you place the enclosed document in the electronic hearing docket for this proceeding.

Thank you.

A handwritten signature in purple ink that reads "Twana Ellis".

Twana Ellis

Encl.: 7/25/13 Letter from J.A. Tony Fallin

CC: Judge Alex Karlin

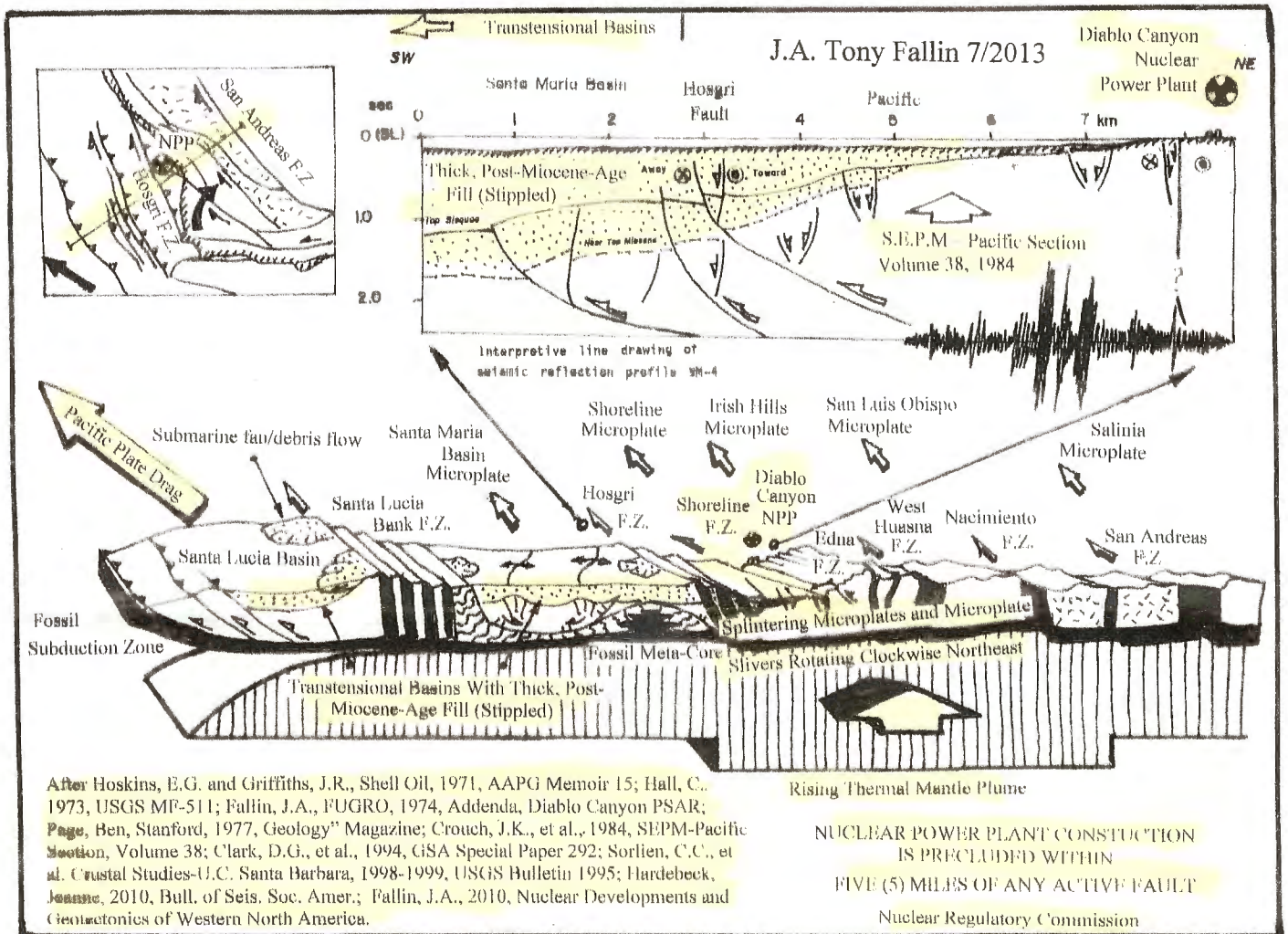
Sally Jewell, Sec., US-DOI, et al., Pacific Gas and Electric (PG&E) in CA has announced that it will submit its final report on a 3-D seismic survey of the active Shoreline Fault that bounds Diablo Canyon Nuclear Power Plant (DCNPP) to the Nuclear Regulatory Commission (NRC) in Aug. 2013 and to the general public in November 2013. The controversial nuclear facility has long been considered by many to be a clear and present danger not only to communities immediately downwind from it (e.g., Morro Bay, San Luis Obispo, Atascadero) but to US-DOI administered lands like Los Padres National Forest, Santa Lucia Wilderness, Machesna Mountain Wilderness. Since PG&E has a 50-year history of down-playing and misrepresenting fault and earthquake dangers around its nuclear facilities, while also convincing pro-nuclear NRC Review Boards to overlook their own rules precluding plant construction over or beside active faults, I recommend strongly that their self-serving report NOT be taken as the final word on anything. A review of PG&E status reports on the Shoreline Fault survey already suggests that a number of things are not mentioned, including: 1) DCNPP is located on the splintering margin of a rising microplate in a stressed, dog-leg section of an active fault system that stretches more than 1500 miles from the southern tip of Baja through California on both sides of the Sierra Nevada to southern Oregon and that is being driven by Pacific Plate drag to the northwest; 2) that a sole fault runs under DCNPP at 10+km depths similar to other sole faults that have generated large quakes in other parts of the San Andreas System (e.g., Loma Prieta, San Fernando Valley), collapsing and twisting re-enforced freeways like spaghetti; 3) tsunami-producing, rift basins produced by transtensional (rather than transpressional) Pacific Plate drag lie just offshore from DCNPP; 4) the mega-tsunami generating potential of the active, Hilina slump block on Hawaii; and 5) salt air corrosion, plus structural fatigue from repeated seismic jolts and irradiation over time that have already caused problems at DCNPP, Humboldt Bay and elsewhere. That short faults often become long faults during quakes is also unmentioned or considered.

J.A. Tony Fallin
J.A. Tony Fallin 7/2013



CONTINENTAL
DRIFT
WHIPLASH!

TO: SALLY JEWELL, SECRETARY
U.S. DEPARTMENT OF INTERIOR
1849 "C" STREET N.W.
WASHINGTON, D.C. 20240



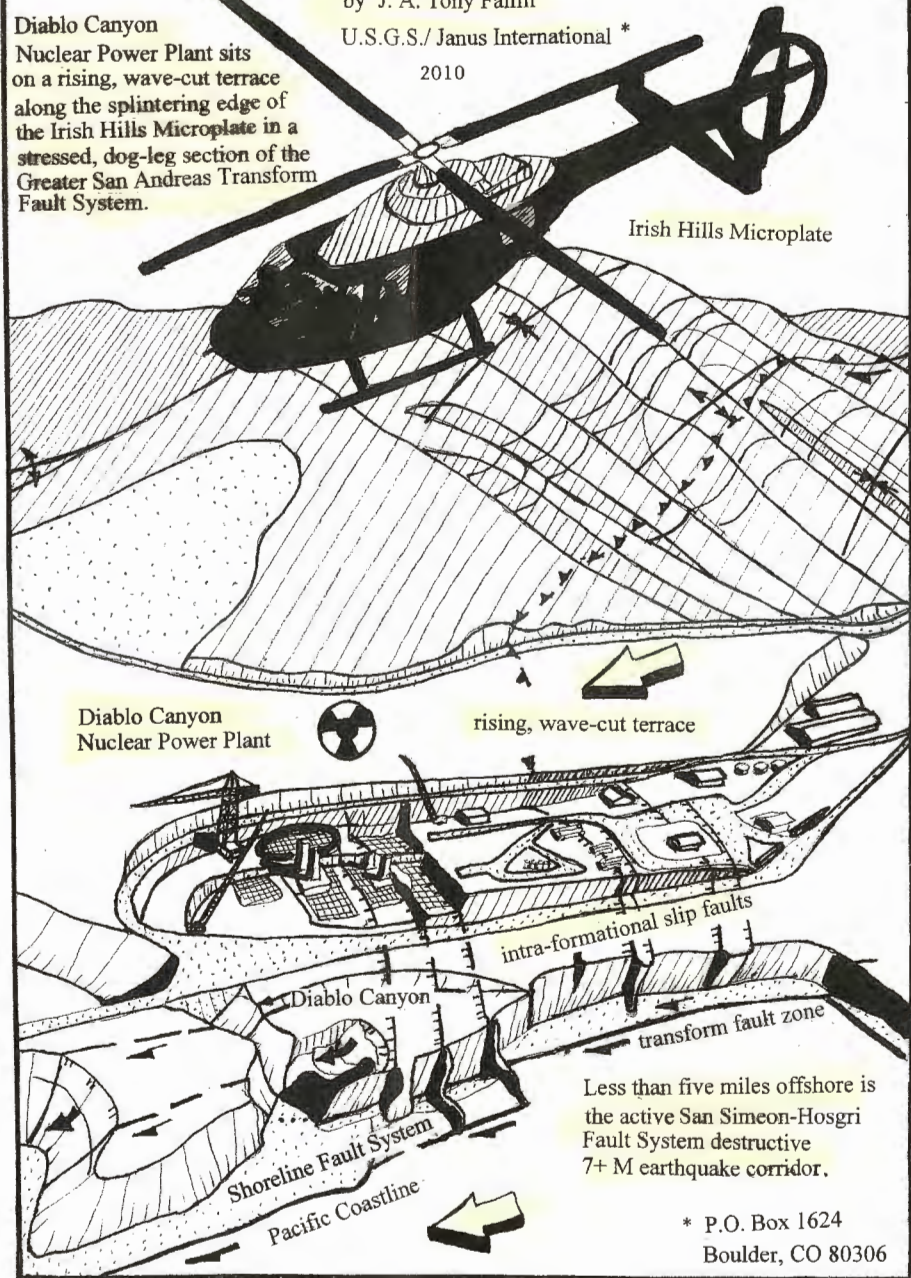
NUCLEAR DEVELOPMENTS AND GEOTECTONICS
ACROSS WESTERN NORTH AMERICA

by J. A. Tony Fallin

U.S.G.S./ Janus International *

2010

Diablo Canyon
Nuclear Power Plant sits
on a rising, wave-cut terrace
along the splintering edge of
the Irish Hills Microplate in a
stressed, dog-leg section of the
Greater San Andreas Transform
Fault System.



Irish Hills Microplate

Diablo Canyon
Nuclear Power Plant

rising, wave-cut terrace

intra-formational slip faults

Diablo Canyon

transform fault zone

Shoreline Fault System
Pacific Coastline

Less than five miles offshore is
the active San Simeon-Hosgri
Fault System destructive
7+ M earthquake corridor.

* P.O. Box 1624
Boulder, CO 80306

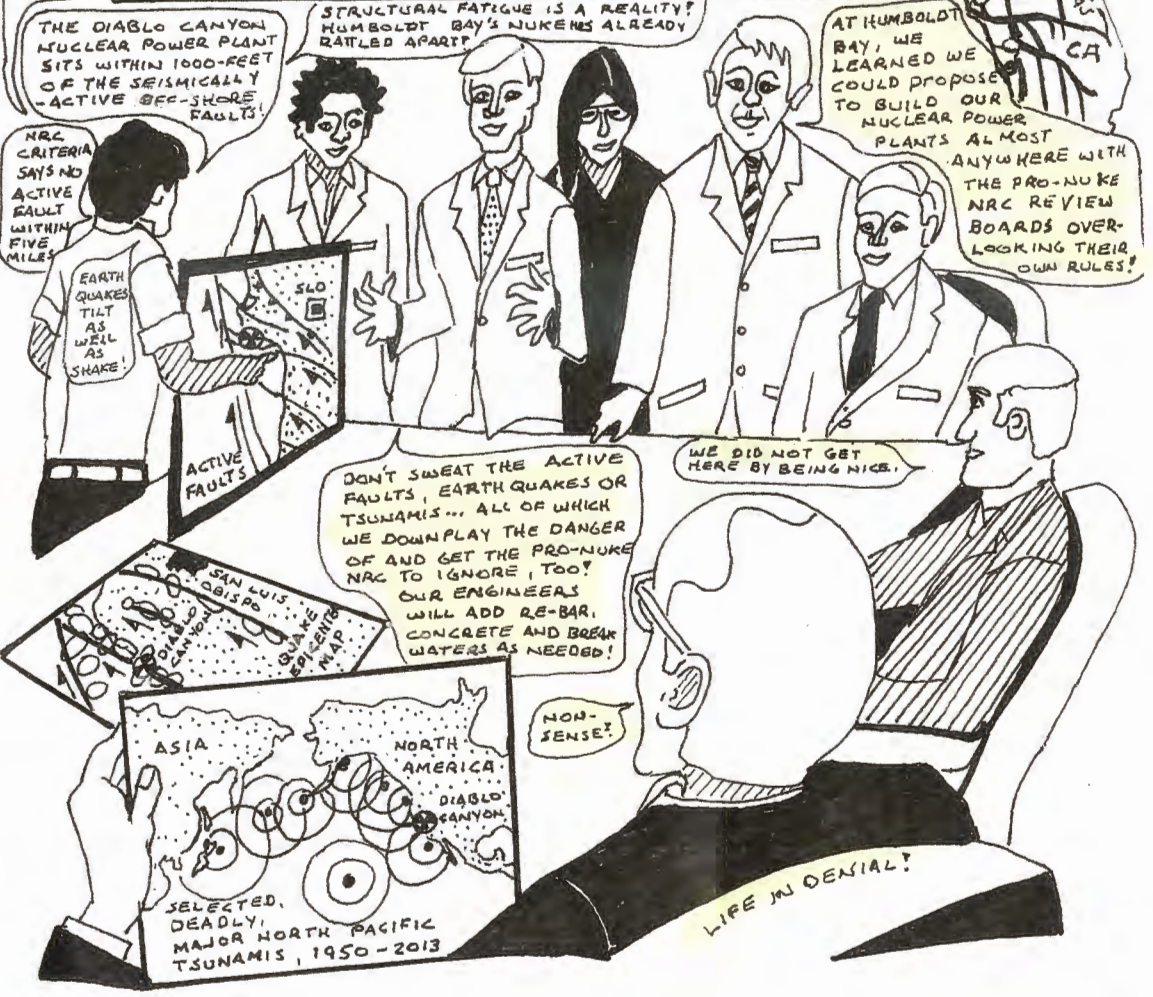
YET ANOTHER GEOLOGICAL CONSULTANT TRIES TO
TALK COMMON SENSE INTO THE MINDS OF
DEATHWISH "SUITS - OUT-TO-ENDANGER-IF-NOT
-KILL-ALL" AT P.G. & E. CORPORATE HEADQUARTERS,
SAN FRANCISCO, CALIFORNIA: 1973

COMMON
SENSE
ALONE SAYS
THE NUCLEAR
SITE WAS
CAUTICALLY-
OR FATALLY-
FLAWED
FROM THE
OUTSET!
THERE IS
EVEN A
TSUNAMI-
GENERATING
FAULT
BASIN
JUST OFF
SHORE!

EARTHQUAKES RESULT FROM
EARTH MOVEMENTS THAT CAN
TILT REACTORS AND DRAIN POOLS!



GREATER SAN ANDREAS
FAULT SYSTEM
CA



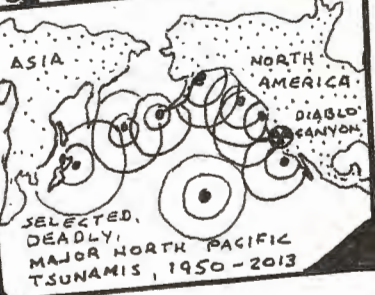
NRC
CRITERIA
SAYS NO
ACTIVE
FAULT
WITHIN
FIVE
MILES



DON'T SWEAT THE ACTIVE
FAULTS, EARTHQUAKES OR
TSUNAMIS... ALL OF WHICH
WE DOWNPLAY THE DANGER
OF AND GET THE PRO-NUKE
NRC TO IGNORE, TOO!
OUR ENGINEERS
WILL ADD RE-BAR,
CONCRETE AND BREAK
WATERS AS NEEDED!

WE DID NOT GET
HERE BY BEING NICE.

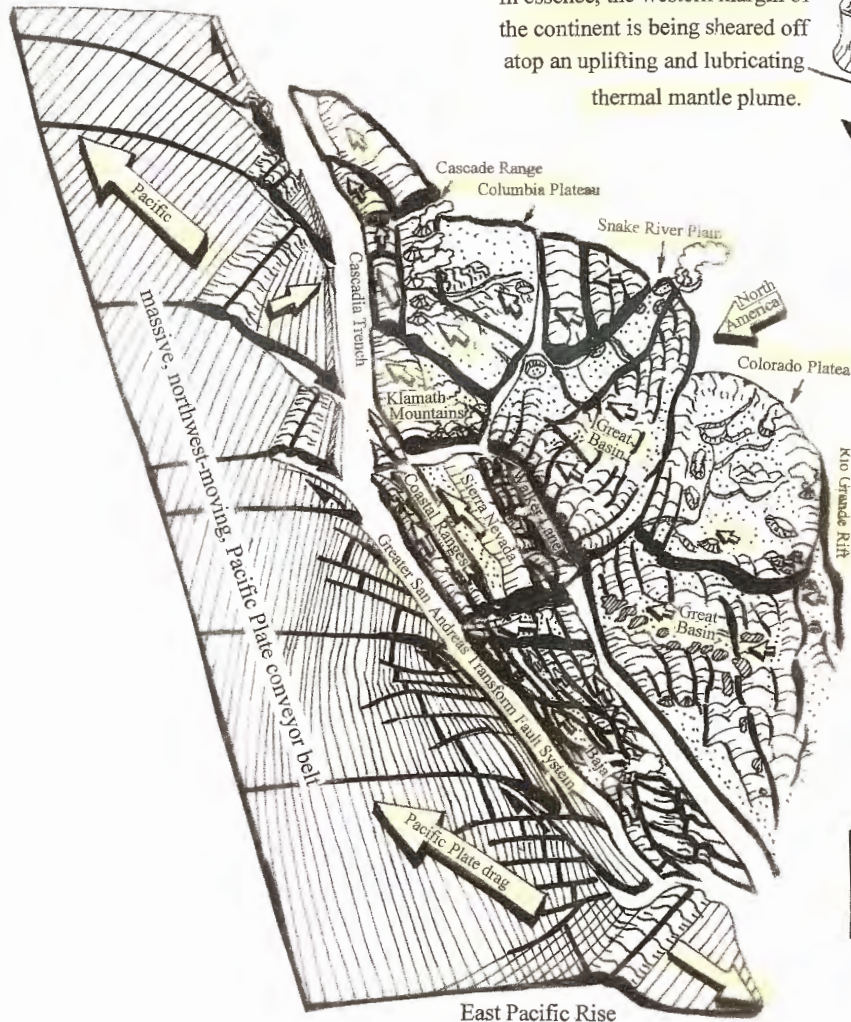
NON-
SENSE!



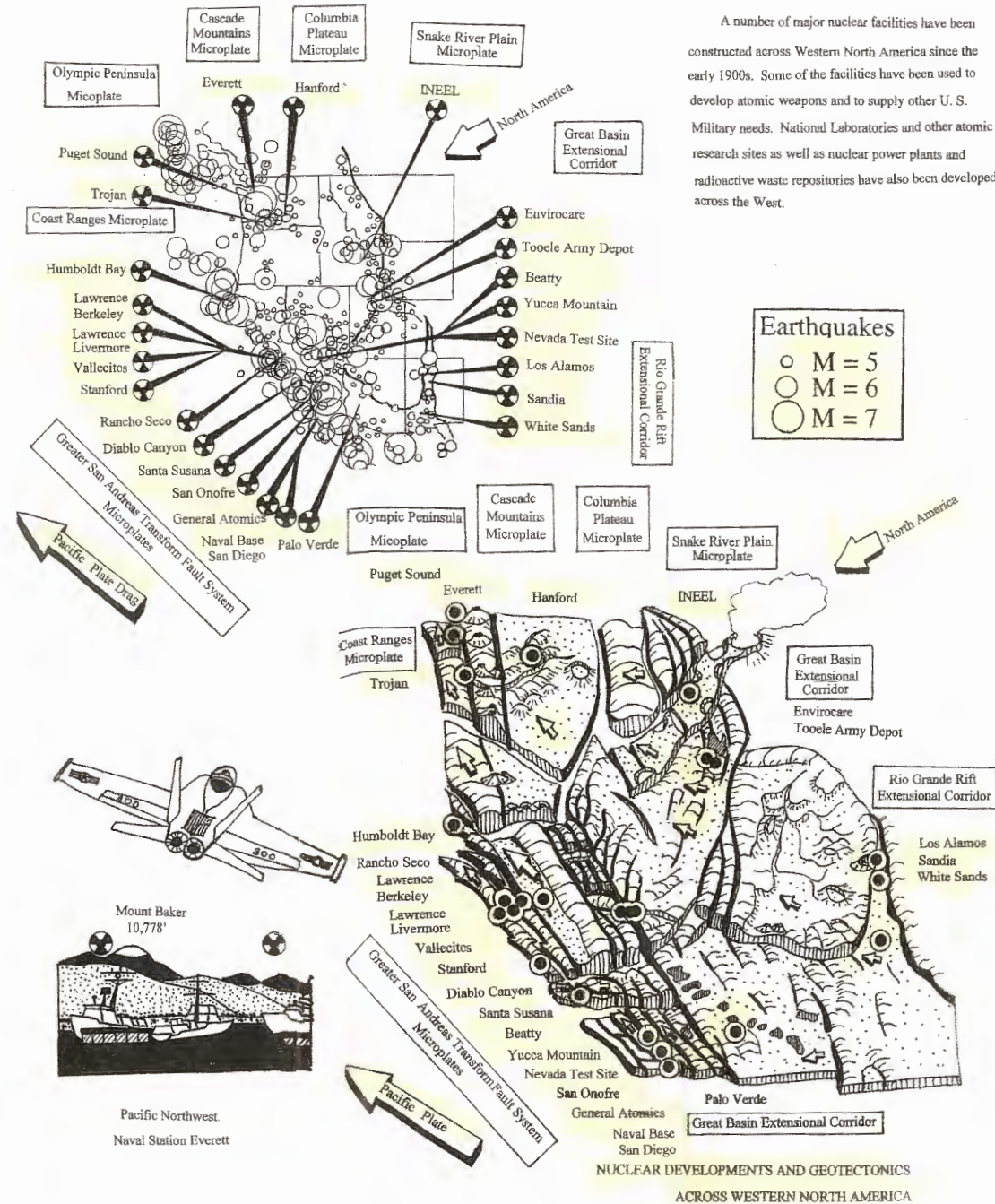
LIFE IN DENIAL!

Completing course work for a Masters Degree in geological sciences, I took a year off to decompress in Santa Fe, New Mexico, where some members of my family who had discovered oil on the Permian Shelf of southeast New Mexico had helped build the Opera Compound and Governor's Mansion beside their own. Then I headed west, where a job with FUGRO, International, Consulting Engineers and Geologists, put aside a plan to finish a PhD at Stanford. Working with some of the world's leading geotectonic experts, and with million-dollar budgets provided by Big Utilities, I spent the next three years flying all over western North America, assessing the geology of proposed nuclear power plant sites, supervising core drilling operations, mapping hundreds of square miles, writing reports, giving client presentations and making more discoveries than many geologists do during their entire, professional careers. Unfortunately, neither FUGRO's clients nor pro-nuclear Federal Review Boards listened to our warnings about active faults and volcanoes, let alone tsunami-prone coastlines, and a lot of nuclear facilities that should have never been built got built.

In essence, the western margin of the continent is being sheared off atop an uplifting and lubricating thermal mantle plume.



Alfred Wegener
1912

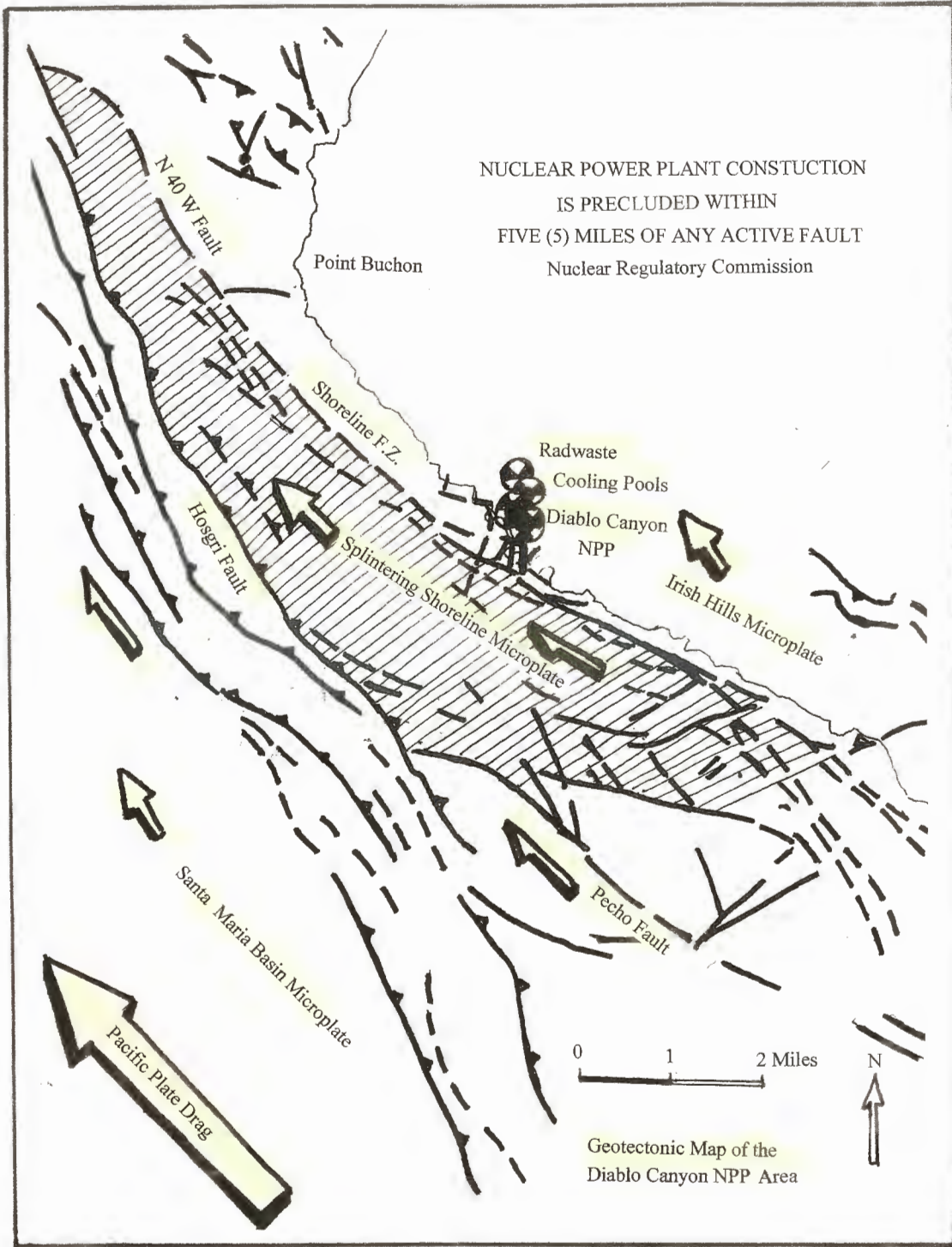


Abstract

A number of major nuclear facilities have been constructed across Western North America since the early 1900s. Some of the facilities have been used to develop atomic weapons and to supply other U. S. Military needs. National Laboratories and other atomic research sites as well as nuclear power plants and radioactive waste repositories have also been developed across the West.

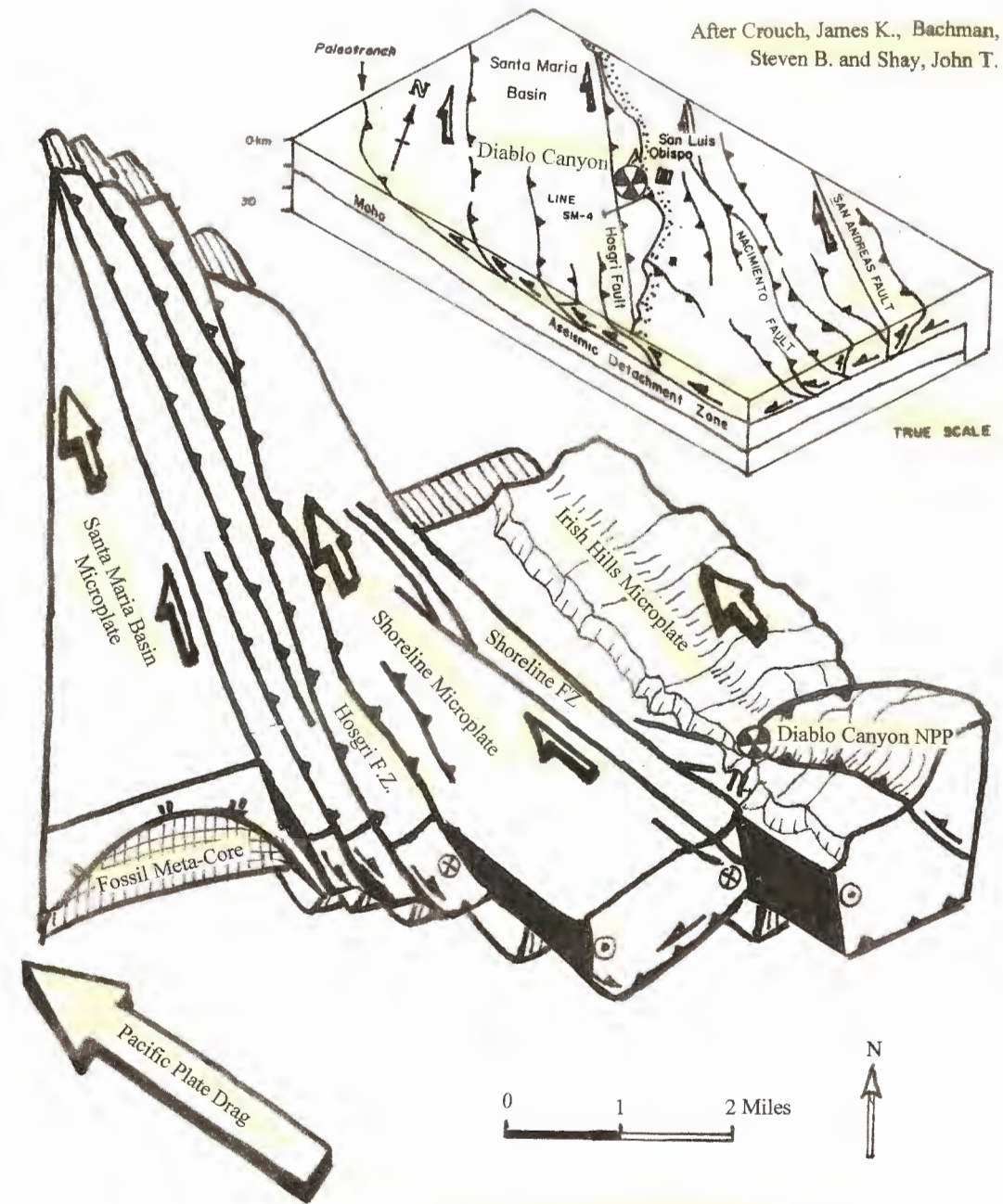
NUCLEAR DEVELOPMENTS AND GEOTECTONICS
ACROSS WESTERN NORTH AMERICA

NUCLEAR POWER PLANT CONSTRUCTION
IS PRECLUDED WITHIN
FIVE (5) MILES OF ANY ACTIVE FAULT
Nuclear Regulatory Commission



Geotectonic Map of the
Diablo Canyon NPP Area

After Crouch, James K., Bachman,
Steven B. and Shay, John T.



Block Diagram Showing the Geotectonic
Setting Around Diablo Canyon Nuclear Power Plant

J.A. Tsuy Fellow
P.O. Box 1624
Boulder, CO 80306



DENVER CO 802

25 JUL 2013 PM 11



Don't let
PC & E
sell you
any
horse
pucky
again.

Atomic Safety & Licensing Board Panel
Two White Flint North
11545 Rockville Pike
M.S. T-3FZ3
Rockville, MD 20852

20852274645

