

PIPING & INSTRUMENTATION DIAGRAMS
RENO CREEK URANIUM ISR PROJECT

PREPARED FOR

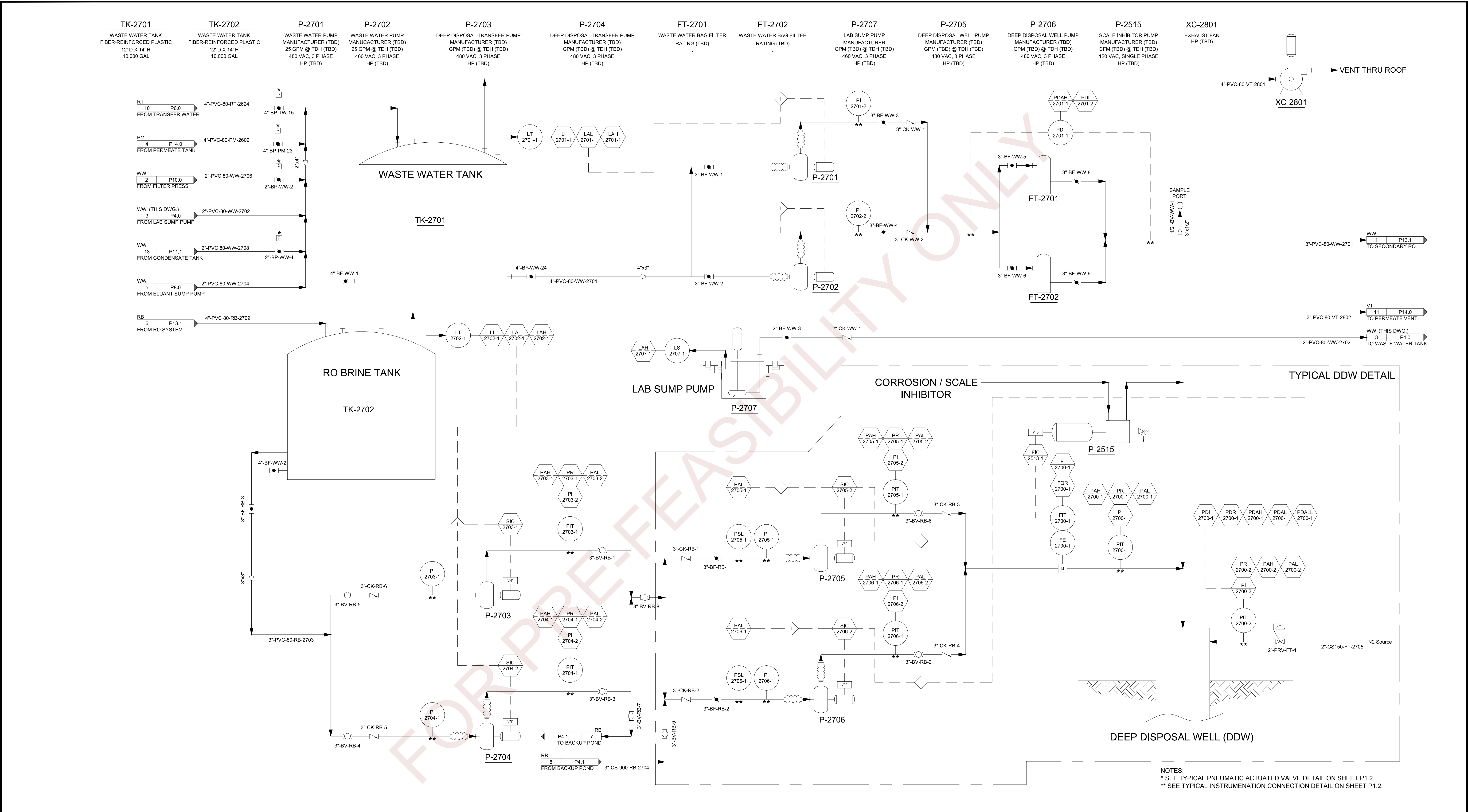
AUC, LLC.

CAMPBELL COUNTY, WYOMING

AUC LLC

SHEET INDEX	
SHEET	DISCRIPTION
P1.0	P&ID PIPING & INSTRUMENTATION SYMBOLS
P1.1	VALVE & PUMP SYMBOLS
P1.2	NOTES AND DETAILS
P2.0	PLANT LAYOUT
P2.1	ADMIN / SHOP LAYOUT
P3.0	PRODUCTION / INJECTION PUMPS
P4.0	WASTE WATER FILTRATION
P4.1	BACKUP POND
P5.0	IX TRAIN 1-2
P5.1	IX TRAIN 3-4
P5.2	IX TRAIN 5-6
P5.3	IX TRAIN 7
P6.0	TRANSFER WATER
P7.0	ELUTION CIRCUIT
P8.0	ELUTION TANKS
P9.0	SODA ASH CIRCUIT
P9.1	BRINE & BI-CARB CIRCUITS
P9.2	REAGENT CIRCUITS
P9.3	SODIUM SULFIDE CIRCUIT
P10.0	PRECIPITATION
P11.0	DRYER 2401
P11.1	DRYER 2402
P12.0	COOLING TOWERS & OIL HEATERS
P13.0	RESTORATION IX
P13.1	GUARD IX & REVERSE OSMOSIS
P14.0	PERMEATE
P15.0	PLANT AIR
P16.0	TRUNKLINE
P17.0	HEADER HOUSE INJECTION (TYP.)
P17.1	HEADER HOUSE RECOVERY (TYP.)

DRAWING ISSUE TYPES: PRB = PRE-BID POB = POST-BID IFC = ISSUED FOR CONSTRUCTION POI = POST ISSUED FOR CONSTRUCTION											PROJECT NO.:		CADD:	CHECKED BY:	APPROVED BY:	PLOT DATE:	SHEET
NO:	DATE	CADD	CHECK	APP'D	ISSUE / REVISION DESCRIPTION	NO:	DATE	CADD	CHECK	APP'D	ISSUE / REVISION DESCRIPTION	2012-250	AJE	STH	BMP	11/13/2012 3:17:27 PM	
A	11/09/12	AJE	STH	BMP	30% OWNER REVIEW												



DRAWING ISSUE TYPES: PRB = PRE-BID POB = POST-BID IFC = ISSUED FOR CONSTRUCTION POI = POST ISSUED FOR CONSTRUCTION											
NO.	DATE	CADD	CHECK	APP'D	ISSUE / REVISION DESCRIPTION	NO.	DATE	CADD	CHECK	APP'D	ISSUE / REVISION DESCRIPTION
A	11/09/12	AJE	STH	BMP	30% OWNER REVIEW						

AUC LLC

THIS DRAWING IS THE PROPERTY OF AUC LLC. ANY USE OR REPRODUCTION IN WHOLE OR PART IS PROHIBITED WITHOUT THE EXPRESS WRITTEN CONSENT OF AUC LLC. COPYRIGHT 2012, ALL RIGHTS RESERVED

NOT FOR
CONSTRUCTION
REVIEW SET
30%

TREC, Inc.
Engineering & Environmental Management
www.treccorp.com

BOZEMAN OFFICE
1800 West Koch, Suite 6
Bozeman, MT 59715
Tel: (406) 586-8364
Fax: (406) 522-8460

CASPER OFFICE
900 Werner Court, Suite 150
Casper, WY 82601
Tel: (307) 265-0696
Fax: (307) 265-2498

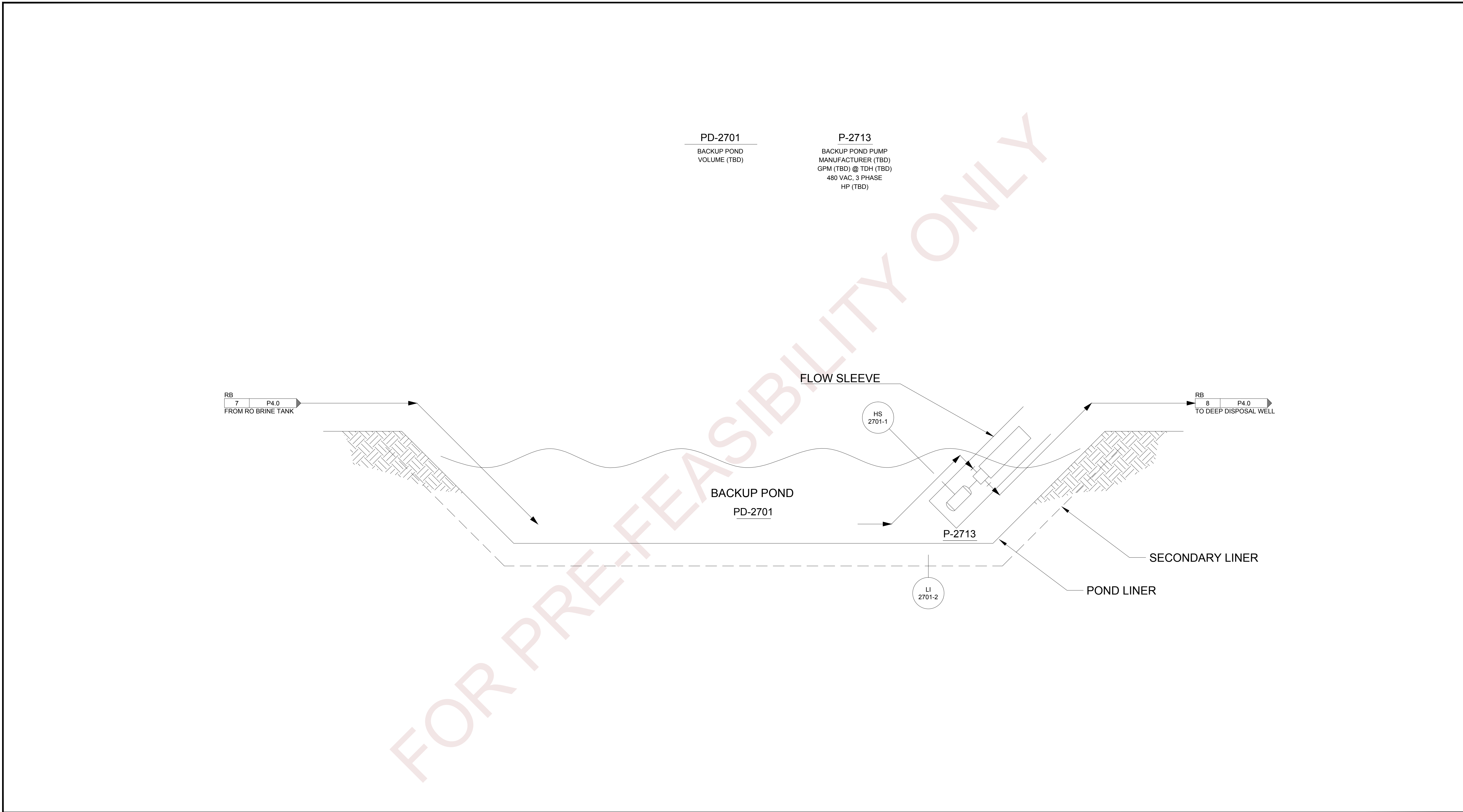
GREAT FALLS OFFICE
600 Central, Suite 204
Great Falls, MT 59401
Tel: (406) 952-0745


BUTTE OFFICE
521 East Front Street
Butte, MT 59701
Tel: (406) 491-0912

This drawing and all related documents (including electronic media) were prepared by TREC Inc. except as noted otherwise herein. The information herein shall only be used by the client to whom the services are rendered and for the purpose of constructing and/or installing the work as shown on certified sealed and signed documents. Any alteration or unauthorized use is strictly prohibited, and the user shall hold harmless and indemnify TREC Inc. from all liabilities which may arise from any unauthorized use. Such use shall constitute the waiver of expressed or implied warranties and shall cover any liabilities which may arise from the construction, use or result of any such unauthorized use or changes.

IF THIS BAR DOES
NOT EQUAL ONE
INCH ADJUST
SCALES
ACCORDINGLY

PROJECT NO.:	CADD:	CHECKED BY:	APPROVED BY:	PLOT DATE:	SHEET
2012-250	AJE	STH	BMP	11/13/2012 3:18:38 PM	
WASTE WATER FILTRATION AUC - RENO CREEK PROJECT PREPARED FOR AUC, LLC.					P4.0



DRAWING ISSUE TYPES: PRB = PRE-BID POB = POST-BID IFC = ISSUED FOR CONSTRUCTION POI = POST ISSUED FOR CONSTRUCTION										<div>AUC LLC</div> <div>THIS DRAWING IS THE PROPERTY OF AUC LLC. ANY USE OR REPRODUCTION IN WHOLE OR PART IS PROHIBITED WITHOUT THE EXPRESS WRITTEN CONSENT OF AUC LLC. COPYRIGHT 2012, ALL RIGHTS RESERVED</div>		<div>NOT FOR CONSTRUCTION REVIEW SET</div> <div>30%</div>	<div>TREC, Inc. Engineering & Environmental Management www.treccorp.com</div> <div><small>This drawing and all related documents (including electronic media) were prepared by TREC Inc. except as noted otherwise herein. The information herein shall only be used by the client to whom the services are rendered and for the purpose of constructing and/or installing the work as shown on certified sealed and signed documents. Any alteration or unauthorized use is strictly prohibited, and the user shall hold harmless and indemnify TREC Inc. from all liabilities which may arise from any unauthorized use. Such use shall constitute the waiver of expressed or implied warranties and shall cover any liabilities which may arise from the construction, use or result of any such unauthorized use or changes.</small></div>	<div>PROJECT NO.: 2012-250</div> <div>CADD: AJE</div> <div>CHECKED BY: STH</div> <div>APPROVED BY: BMP</div> <div>PLOT DATE: 11/13/2012 3:18:48 PM</div>	SHEET
NO:	DATE	CADD	CHECK	APP'D	ISSUE / REVISION DESCRIPTION	NO:	DATE	CADD	CHECK					APP'D	ISSUE / REVISION DESCRIPTION

BOZEMAN OFFICE
1800 West Koch, Suite 6
Bozeman, MT 59715
Tel: (406) 586-8364
Fax: (406) 522-8460

CASPER OFFICE
900 Werner Court, Suite 150
Casper, WY 82601
Tel: (307) 265-0696
Fax: (307) 265-2498

GREAT FALLS OFFICE
600 Central, Suite 204
Great Falls, MT 59401
Tel: (406) 952-0745

BUTTE OFFICE
521 East Front Street
Butte, MT 59701
Tel: (406) 491-0912