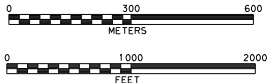
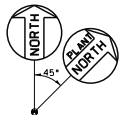


**NOTES:**  
 1. THE HORIZONTAL COORDINATES ARE FLORIDA STATE PLANE COORDINATES, WEST ZONE AND ARE BASED ON THE NORTH AMERICAN DATUM OF 1983 (NAD83).

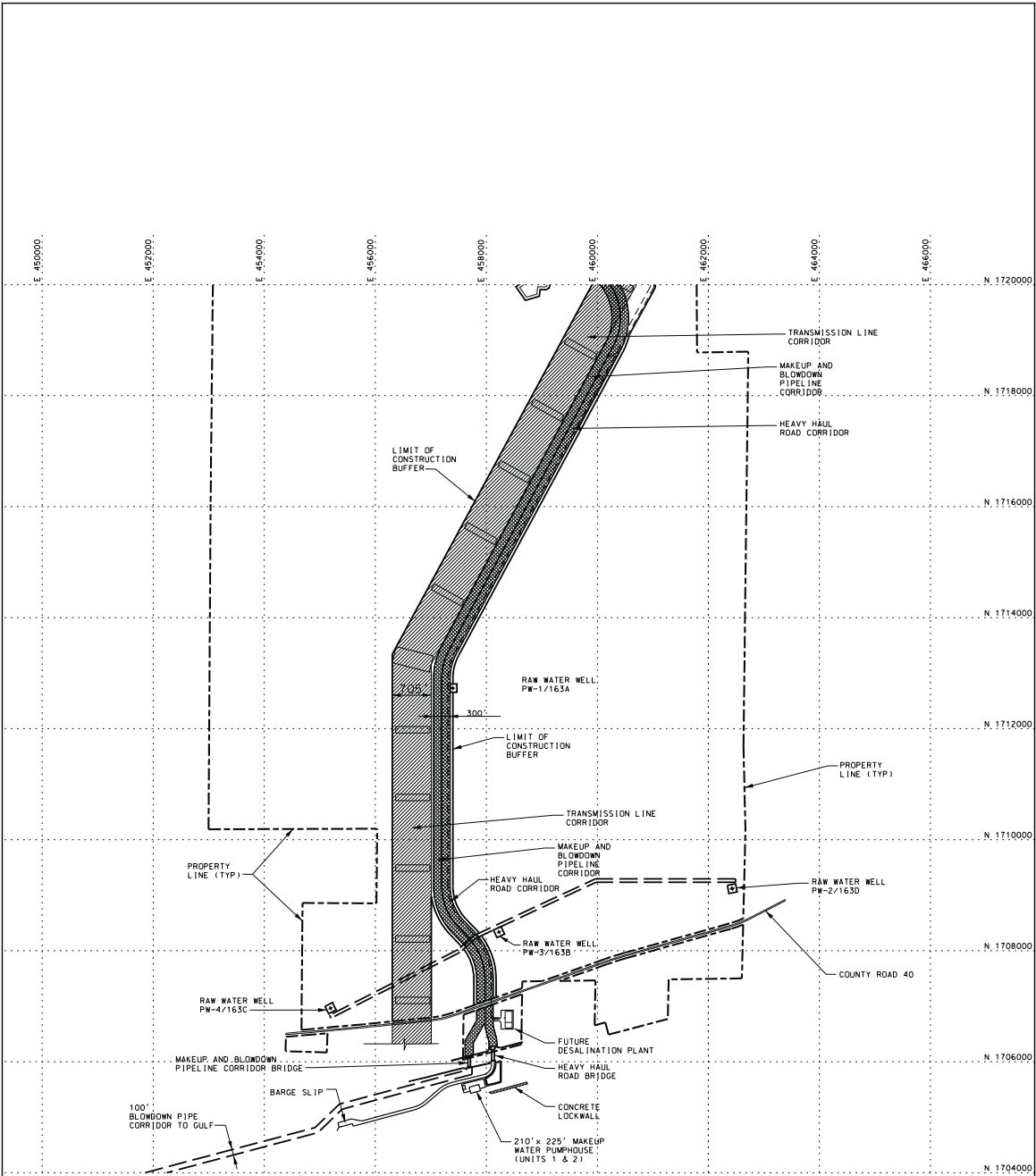
**LEGEND:**  
 - - - - - DENOTES BOUNDARY OF THE PLANT DESIGN FEATURES IN THE SCOPE OF API1000 CERTIFICATION.



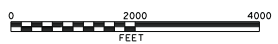
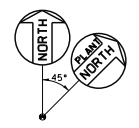
Duke Energy Florida  
 Levy Nuclear Plant  
 Units 1 and 2  
 Part 2, Final Safety Analysis Report

Site Layout

FIGURE 1.1-201 (Sheet 1 of 2) Rev 6



**NOTES:**  
 1. THE HORIZONTAL COORDINATES ARE FLORIDA STATE PLANE COORDINATES, WEST ZONE AND ARE BASED ON THE NORTH AMERICAN DATUM OF 1983 (NAD83).



**Duke Energy Florida**  
**Levy Nuclear Plant**  
**Units 1 and 2**  
**Part 2, Final Safety Analysis Report**

---

Site Layout

FIGURE 1.1-201 (Sheet 2 of 2)      Rev 6