

ATTACHMENT TO LICENSE AMENDMENT NO. 8

TO FACILITY COMBINED LICENSE NO. NPF-93

DOCKET NO. 52-027

Replace the following pages of the Facility Combined License No. NPF-93 with the attached revised pages. The revised pages are identified by amendment number and contain marginal lines indicating the areas of change.

Facility Combined License No. NPF-93

REMOVE

INSERT

7

7

Facility Combined License No. NPF-93

Appendix C - Inspections, Tests, Analyses and Acceptance Criteria

REMOVE

INSERT

C-95

C-95

C-96

C-96

C-97

C-97

C-98

C-98

C-99

C-99

C-100

C-100

C-101

C-101

C-262

C-262

C-263

C-263

C-266

C-266

C-267

C-267

- (b) SCE&G shall report any violation of a requirement in Section 2.D.(3), Section 2.D.(4), Section 2.D.(5), and Section 2.D.(6) of this license within 24 hours. Initial notification shall be made to the NRC Operations Center in accordance with 10 CFR 50.72, with written follow up in accordance with 10 CFR 50.73.

(8) Incorporation

The Technical Specifications, Environmental Protection Plan, and ITAAC in Appendices A, B, and C, respectively of this license, as revised through Amendment No. 8, are hereby incorporated into this license.

(9) Technical Specifications

The technical specifications in Appendix A to this license become effective upon a Commission finding that the acceptance criteria in this license (ITAAC) are met in accordance with 10 CFR 52.103(g).

(10) Operational Program Implementation

SCE&G shall implement the programs or portions of programs identified below, on or before the date SCE&G achieves the following milestones.

- (a) Environmental Qualification Program implemented before initial fuel load;
- (b) Reactor Vessel Material Surveillance Program implemented before initial criticality;
- (c) Preservice Testing Program implemented before initial fuel load;
- (d) Containment Leakage Rate Testing Program implemented before initial fuel load;
- (e) Fire Protection Program
 - 1. The fire protection measures in accordance with Regulatory Guide (RG) 1.189 for designated storage building areas (including adjacent fire areas that could affect the storage area) implemented before initial receipt of byproduct or special nuclear materials that are not fuel (excluding exempt quantities as described in 10 CFR 30.18);
 - 2. The fire protection measures in accordance with RG 1.189 for areas containing new fuel (including adjacent areas where a fire could affect the new fuel) implemented before receipt of fuel onsite;

Table 2.2.1-2		
Line Name	Line Number	ASME Code Section III
Instrument Air In	CAS-PL-L015	Yes
Service Air In	CAS-PL-L204	Yes
Component Cooling Water Supply to Containment	CCS-PL-L201	Yes
Component Cooling Water Outlet from Containment	CCS-PL-L207	Yes
Demineralized Water In	DWS-PL-L245, L230	Yes
Fire Protection Supply to Containment	FPS-PL-L107	Yes
Containment Atmosphere Return Line	PSS-PL-L038	Yes
Common Primary Sample Line A/B	PSS-PL-T005A/B	Yes
Containment Atmosphere Sample Line	PSS-PL-T031	Yes
Spent Fuel Pool Cooling Discharge	SFS-PL-L017	Yes
Spent Fuel Pool Cooling Suction from Containment	SFS-PL-L038	Yes
Containment Purge Inlet to Containment	VFS-PL-L104, L105, L106	Yes
Containment Purge Discharge from Containment	VFS-PL-L203, L204, L205, L800, L801A/B, L803, L804, L805A/B	Yes
Fan Cooler Supply Line to Containment	VWS-PL-L032	Yes
Fan Cooler Return Line from Containment	VWS-PL-L055	Yes
RCDT Gas Out	WLS-PL-L022	Yes
Waste Sump Out	WLS-PL-L073	Yes

Table 2.2.1-3				
Inspections, Tests, Analyses, and Acceptance Criteria				
No.	ITAAC No.	Design Commitment	Inspections, Tests, Analyses	Acceptance Criteria
90	2.2.01.01	1. The functional arrangement of the CNS and associated systems is as described in the Design Description of this Section 2.2.1.	Inspection of the as-built system will be performed.	The as-built CNS conforms with the functional arrangement as described in the Design Description of this Section 2.2.1.
91	2.2.01.02a	2.a) The components identified in Table 2.2.1-1 as ASME Code Section III are designed and constructed in accordance with ASME Code Section III requirements.	Inspection will be conducted of the as-built components as documented in the ASME design reports.	The ASME Code Section III design reports exist for the as-built components identified in Table 2.2.1-1 as ASME Code Section III.

Table 2.2.1-3

Inspections, Tests, Analyses, and Acceptance Criteria

No.	ITAAC No.	Design Commitment	Inspections, Tests, Analyses	Acceptance Criteria
92	2.2.01.02b	2.b) The piping identified in Table 2.2.1-2 as ASME Code Section III is designed and constructed in accordance with ASME Code Section III requirements.	Inspection will be conducted of the as-built piping as documented in the ASME design reports.	The ASME Code Section III design reports exist for the as-built piping identified in Table 2.2.1-2 as ASME Code Section III.
93	2.2.01.03a	3.a) Pressure boundary welds in components identified in Table 2.2.1-1 as ASME Code Section III meet ASME Code Section III requirements.	Inspection of the as-built pressure boundary welds will be performed in accordance with the ASME Code Section III.	A report exists and concludes that the ASME Code Section III requirements are met for non-destructive examination of pressure boundary welds.
94	2.2.01.03b	3.b) Pressure boundary welds in piping identified in Table 2.2.1-2 as ASME Code Section III meet ASME Code Section III requirements.	Inspection of the as-built pressure boundary welds will be performed in accordance with the ASME Code Section III.	A report exists and concludes that the ASME Code Section III requirements are met for non-destructive examination of pressure boundary welds.
95	2.2.01.04a.i	4.a) The components identified in Table 2.2.1-1 as ASME Code Section III retain their pressure boundary integrity at their design pressure.	i) A hydrostatic or pressure test will be performed on the components required by the ASME Code Section III to be tested.	i) A report exists and concludes that the results of the pressure test of the components identified in Table 2.2.1-1 as ASME Code Section III conform with the requirements of the ASME Code Section III.
96	2.2.01.04a.ii	4.a) The components identified in Table 2.2.1-1 as ASME Code Section III retain their pressure boundary integrity at their design pressure.	ii) Impact testing will be performed on the containment and pressure-retaining penetration materials in accordance with the ASME Code Section III, Subsection NE, to confirm the fracture toughness of the materials.	ii) A report exists and concludes that the containment and pressure-retaining penetration materials conform with fracture toughness requirements of the ASME Code Section III.
97	2.2.01.04b	4.b) The piping identified in Table 2.2.1-2 as ASME Code Section III retains its pressure boundary integrity at its design pressure.	A hydrostatic or pressure test will be performed on the piping required by the ASME Code Section III to be pressure tested.	A report exists and concludes that the results of the pressure test of the piping identified in Table 2.2.1-2 as ASME Code Section III conform with the requirements of the ASME Code Section III.
98	2.2.01.05.i	5. The seismic Category I equipment identified in Table 2.2.1-1 can withstand seismic design basis loads without loss of structural integrity and safety function.	i) Inspection will be performed to verify that the seismic Category I equipment and valves identified in Table	i) The seismic Category I equipment identified in Table 2.2.1-1 is located on the Nuclear Island.

Table 2.2.1-3

Inspections, Tests, Analyses, and Acceptance Criteria

No.	ITAAC No.	Design Commitment	Inspections, Tests, Analyses	Acceptance Criteria
			2.2.1-1 are located on the Nuclear Island.	
99	2.2.01.05.ii	5. The seismic Category I equipment identified in Table 2.2.1-1 can withstand seismic design basis loads without loss of structural integrity and safety function.	ii) Type tests, analyses, or a combination of type tests and analyses of seismic Category I equipment will be performed.	ii) A report exists and concludes that the seismic Category I equipment can withstand seismic design basis dynamic loads without loss of structural integrity and safety function.
100	2.2.01.05.iii	5. The seismic Category I equipment identified in Table 2.2.1-1 can withstand seismic design basis loads without loss of structural integrity and safety function.	iii) Inspection will be performed for the existence of a report verifying that the as-built equipment including anchorage is seismically bounded by the tested or analyzed conditions.	iii) The as-built equipment including anchorage is seismically bounded by the tested or analyzed conditions.
101	2.2.01.06a.i	6.a) The Class 1E equipment identified in Table 2.2.1-1 as being qualified for a harsh environment can withstand the environmental conditions that would exist before, during, and following a design basis accident without loss of safety function for the time required to perform the safety function.	i) Type tests, analyses, or a combination of type tests and analyses will be performed on Class 1E equipment located in a harsh environment.	i) A report exists and concludes that the Class 1E equipment identified in Table 2.2.1-1 as being qualified for a harsh environment can withstand the environmental conditions that would exist before, during, and following a design basis accident without loss of safety function for the time required to perform the safety function.
102	2.2.01.06a.ii	6.a) The Class 1E equipment identified in Table 2.2.1-1 as being qualified for a harsh environment can withstand the environmental conditions that would exist before, during, and following a design basis accident without loss of safety function for the time required to perform the safety function.	ii) Inspection will be performed of the as-built Class 1E equipment and the associated wiring, cables, and terminations located in a harsh environment.	ii) A report exists and concludes that the as-built Class 1E equipment and the associated wiring, cables, and terminations identified in Table 2.2.1-1 as being qualified for a harsh environment are bounded by type tests, analyses, or a combination of type tests and analyses.
103	2.2.01.06b	6.b) The Class 1E components identified in Table 2.2.1-1 are powered from their respective Class 1E division.	Testing will be performed by providing a simulated test signal in each Class 1E division.	A simulated test signal exists at the Class 1E equipment identified in Table 2.2.1-1 when the assigned Class 1E division

Table 2.2.1-3

Inspections, Tests, Analyses, and Acceptance Criteria

No.	ITAAC No.	Design Commitment	Inspections, Tests, Analyses	Acceptance Criteria
				is provided the test signal.
104	2.2.01.06c	6.c) Separation is provided between CNS Class 1E divisions, and between Class 1E divisions and non-Class 1E cable.	See ITAAC Table 3.3-6, item 7.d.	See ITAAC Table 3.3-6, item 7.d.
105	2.2.01.06d.i	6.d) The non-Class 1E electrical penetrations identified in Table 2.2.1-1 as being qualified for a harsh environment can withstand the environmental conditions that would exist before, during, and following a design basis accident without loss of containment pressure boundary integrity.	i) Type tests, analyses, or a combination of type tests and analyses will be performed on non-Class 1E electrical penetrations located in a harsh environment.	i) A report exists and concludes that the non-Class 1E electrical penetrations identified in Table 2.2.1-1 as being qualified for a harsh environment can withstand the environmental conditions that would exist before, during, and following a design basis accident without loss of containment pressure boundary integrity.
106	2.2.01.06d.ii	6.d) The non-Class 1E electrical penetrations identified in Table 2.2.1-1 as being qualified for a harsh environment can withstand the environmental conditions that would exist before, during, and following a design basis accident without loss of containment pressure boundary integrity.	ii) Inspection will be performed of the as-built non-Class 1E electrical penetrations located in a harsh environment.	ii) A report exists and concludes that the as-built non-Class 1E electrical penetrations identified in Table 2.2.1-1 as being qualified for a harsh environment are bounded by type tests, analyses, or a combination of type tests and analyses.
107	2.2.01.07.i	7. The CNS provides the safety-related function of containment isolation for containment boundary integrity and provides a barrier against the release of fission products to the atmosphere.	i) A containment integrated leak rate test will be performed.	i) The leakage rate from containment for the integrated leak rate test is less than L_a .
108	2.2.01.07.ii	7. The CNS provides the safety-related function of containment isolation for containment boundary integrity and provides a barrier against the release of fission products to the atmosphere.	ii) Testing will be performed to demonstrate that remotely operated containment isolation valves close within the required response times.	ii) The containment purge isolation valves (VFS-PL-V003, -V004, -V009, and -V010) close within 20 seconds, containment vacuum relief isolation valves (VFS-PL-V800A and -V800B) close within 30 seconds, SGS valves SGS-PL-V040A/B and SGS-PL-V057A/B are covered in subsection 2.2.4, Table 2.2.4-4 (item 11.b.ii)

Table 2.2.1-3

Inspections, Tests, Analyses, and Acceptance Criteria

No.	ITAAC No.	Design Commitment	Inspections, Tests, Analyses	Acceptance Criteria
				and all other containment isolation valves close within 60 seconds upon receipt of an actuation signal.
109	2.2.01.08	8. Containment electrical penetration assemblies are protected against currents that are greater than the continuous ratings.	An analysis for the as-built containment electrical penetration assemblies will be performed to demonstrate (1) that the maximum current of the circuits does not exceed the continuous rating of the containment electrical penetration assembly, or (2) that the circuits have redundant protection devices in series and that the redundant current protection devices are coordinated with the containment electrical penetration assembly's rated short circuit thermal capacity data and prevent current from exceeding the continuous current rating of the containment electrical penetration assembly.	Analysis exists for the as-built containment electrical penetration assemblies and concludes that the penetrations are protected against currents which are greater than their continuous ratings.
110	2.2.01.09	9. Safety-related displays identified in Table 2.2.1-1 can be retrieved in the MCR.	Inspection will be performed for retrievability of the safety-related displays in the MCR.	Safety-related displays identified in Table 2.2.1-1 can be retrieved in the MCR.
111	2.2.01.10a	10.a) Controls exist in the MCR to cause those remotely operated valves identified in Table 2.2.1-1 to perform active functions.	Stroke testing will be performed on remotely operated valves identified in Table 2.2.1-1 using the controls in the MCR.	Controls in the MCR operate to cause remotely operated valves identified in Table 2.2.1-1 to perform active safety functions.
112	2.2.01.10b	10.b) The valves identified in Table 2.2.1-1 as having PMS control perform an active safety function after receiving a signal from the PMS.	Testing will be performed on remotely operated valves listed in Table 2.2.1-1 using real or simulated signals into the PMS.	The remotely operated valves identified in Table 2.2.1-1 as having PMS control perform the active function identified in the table after receiving a signal from PMS.
113	2.2.01.10c	10.c) The valves identified in Table 2.2.1-1 as having DAS control perform an active safety function after receiving a signal	Testing will be performed on remotely operated valves listed in Table 2.2.1-1 using	The remotely operated valves identified in Table 2.2.1-1 as having

Table 2.2.1-3

Inspections, Tests, Analyses, and Acceptance Criteria

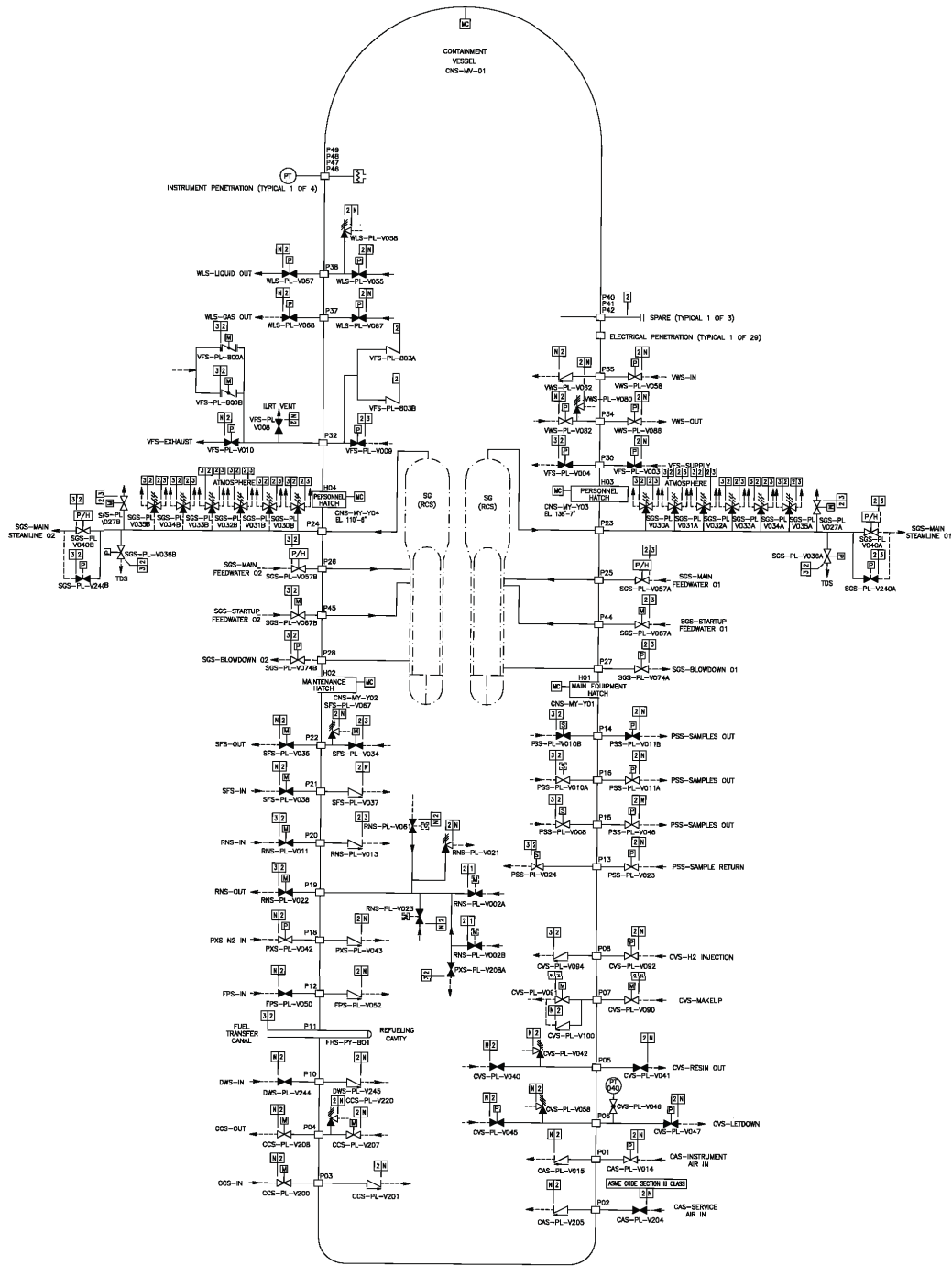
No.	ITAAC No.	Design Commitment	Inspections, Tests, Analyses	Acceptance Criteria
		from DAS.	real or simulated signals into the DAS.	DAS control perform the active function identified in the table after receiving a signal from DAS.
114	2.2.01.11a.i	11.a) The motor-operated and check valves identified in Table 2.2.1-1 perform an active safety-related function to change position as indicated in the table.	i) Tests or type tests of motor-operated valves will be performed to demonstrate the capability of each valve to operate under design conditions.	i) A test report exists and concludes that each motor-operated valve changes position as indicated in Table 2.2.1-1 under design conditions.
115	2.2.01.11a.ii	11.a) The motor-operated and check valves identified in Table 2.2.1-1 perform an active safety-related function to change position as indicated in the table.	ii) Inspection will be performed for the existence of a report verifying that the as-built motor-operated valves are bounded by the tests or type tests.	ii) A report exists and concludes that the as-built motor-operated valves are bounded by the tests or type tests.
116	2.2.01.11a.iii	11.a) The motor-operated and check valves identified in Table 2.2.1-1 perform an active safety-related function to change position as indicated in the table.	iii) Tests of the motor-operated valves will be performed under preoperational flow, differential pressure, and temperature conditions.	iii) Each motor-operated valve changes position as indicated in Table 2.2.1-1 under pre-operational test conditions.
117	2.2.01.11a.iv	11.a) The motor-operated and check valves identified in Table 2.2.1-1 perform an active safety-related function to change position as indicated in the table.	iv) Exercise testing of the check valves with active safety functions identified in Table 2.2.1-1 will be performed under preoperational test pressure, temperature and fluid flow conditions.	iv) Each check valve changes position as indicated in Table 2.2.1-1.
118	2.2.01.11b	11.b) After loss of motive power, the remotely operated valves identified in Table 2.2.1-1 assume the indicated loss of motive power position.	Testing of the remotely operated valves will be performed under the conditions of loss of motive power.	After loss of motive power, each remotely operated valve identified in Table 2.2.1-1 assumes the indicated loss of motive power position.

Table 2.2.1-4

Component Name	Tag No.	Component Location
Containment Vessel	CNS-MV-01	Shield Building

Figure 2.2.1-1
Containment System

Amendment No. 6 8



C-101

1. The functional arrangement of the PSS is as described in the Design Description of this Section 2.3.13.
2. The components identified in Table 2.3.13-1 as ASME Code Section III are designed and constructed in accordance with ASME Code Section III requirements.
3. Pressure boundary welds in components identified in Table 2.3.13-1 as ASME Code Section III meet ASME Code Section III requirements.
4. The components identified in Table 2.3.13-1 as ASME Code Section III retain their pressure boundary integrity at their design pressure.
5. The seismic Category I equipment identified in Table 2.3.13-1 can withstand seismic design basis loads without loss of safety function.
6.
 - a) The Class 1E equipment identified in Table 2.3.13-1 as being qualified for a harsh environment can withstand the environmental conditions that would exist before, during, and following a design basis accident without loss of their safety function, for the time required to perform the safety function.
 - b) The Class 1E components identified in Table 2.3.13-1 are powered from their respective Class 1E division.
 - c) Separation is provided between PSS Class 1E divisions, and between Class 1E divisions and non-Class 1E divisions.
7. The PSS provides the safety-related function of preserving containment integrity by isolation of the PSS lines penetrating the containment.
8. The PSS provides the nonsafety-related function of providing the capability of obtaining reactor coolant and containment atmosphere samples.
9. Safety-related displays identified in Table 2.3.13-1 can be retrieved in the MCR.
10.
 - a) Controls exist in the MCR to cause those remotely operated valves identified in Table 2.3.13-1 to perform active functions.
 - b) The valves identified in Table 2.3.13-1 as having protection and safety monitoring system (PMS) control perform an active function after receiving a signal from the PMS.
11.
 - a) Deleted
 - b) After loss of motive power, the remotely operated valves identified in Table 2.3.13-1 assume the indicated loss of motive power position.
12. Controls exist in the MCR to cause the valves identified in Table 2.3.13-2 to perform the listed function.

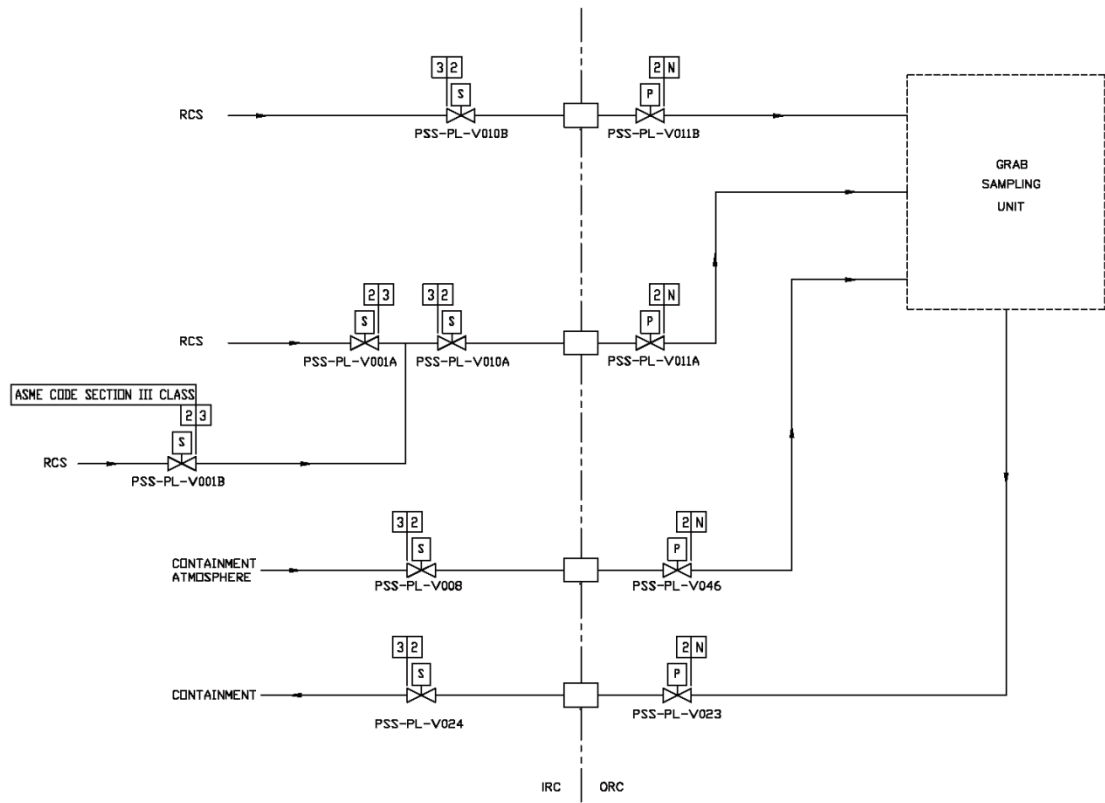
Table 2.3.13-1									
Equipment Name	Tag No.	ASME Code Section III	Seismic Cat. I	Remotely Operated Valve	Class IE/Qual. for Harsh Envir.	Safety-Related Display	Control PMS/DAS	Active Function	Loss of Motive Power Position
Containment Air Sample Containment Isolation Valve Inside Reactor Containment (IRC)	PSS-PL-V008	Yes	Yes	Yes	Yes/Yes	Yes (Valve Position)	Yes/No	Transfer Closed	Closed
Liquid Sample Line Containment Isolation Valve IRC	PSS-PL-V010A	Yes	Yes	Yes	Yes/Yes	Yes (Valve Position)	Yes/No	Transfer Closed	Closed
Liquid Sample Line Containment Isolation Valve IRC	PSS-PL-V010B	Yes	Yes	Yes	Yes/Yes	Yes (Valve Position)	Yes/No	Transfer Closed	Closed
Liquid Sample Line Containment Isolation Valve Outside Reactor Containment (ORC)	PSS-PL-V011A	Yes	Yes	Yes	Yes/No	Yes (Valve Position)	Yes/No	Transfer Closed	Closed
Liquid Sample Line Containment Isolation Valve ORC	PSS-PL-V011B	Yes	Yes	Yes	Yes/No	Yes (Valve Position)	Yes/No	Transfer Closed	Closed
Sample Return Line Containment Isolation Valve ORC	PSS-PL-V023	Yes	Yes	Yes	Yes/No	Yes (Valve Position)	Yes/No	Transfer Closed	Closed
Sample Return Containment Isolation Valve IRC	PSS-PL-V024	Yes	Yes	Yes	Yes/Yes	Yes (Valve Position)	Yes/No	Transfer Closed	Closed
Air Sample Line Containment Isolation Valve ORC	PSS-PL-V046	Yes	Yes	Yes	Yes/No	Yes (Valve Position)	Yes/No	Transfer Closed	Closed

Note: A dash (-) indicates not applicable.

Table 2.3.13-3

Inspections, Tests, Analyses, and Acceptance Criteria

No.	ITAAC No.	Design Commitment	Inspections, Tests, Analyses	Acceptance Criteria
470	2.3.13.08	8. The PSS provides the nonsafety-related function of providing the capability of obtaining reactor coolant and containment atmosphere samples.	Testing will be performed to obtain samples of the reactor coolant and containment atmosphere.	A sample is drawn from the reactor coolant and the containment atmosphere.
471	2.3.13.09	9. Safety-related displays identified in Table 2.3.13-1 can be retrieved in the MCR.	Inspection will be performed for retrievability of the safety-related displays in the MCR.	The safety-related displays identified in Table 2.3.13-1 can be retrieved in the MCR.
472	2.3.13.10a	10.a) Controls exist in the MCR to cause those remotely operated valves identified in Table 2.3.13-1 to perform active functions.	Stroke testing will be performed on the remotely operated valves identified in Table 2.3.13-1 using the controls in the MCR.	Controls in the MCR operate to cause those remotely operated valves identified in Table 2.3.13-1 to perform active functions.
473	2.3.13.10b	10.b) The valves identified in Table 2.3.13-1 as having PMS control perform an active function after receiving a signal from the PMS.	Testing will be performed on remotely operated valves listed in Table 2.3.13-1 using real or simulated signals into the PMS.	The remotely operated valves identified in Table 2.3.13-1 as having PMS control perform the active function identified in the table after receiving a signal from the PMS.
474	2.3.13.11a	11.a) Deleted		
475	2.3.13.11b	11.b) After loss of motive power, the remotely operated valves identified in Table 2.3.13-1 assume the indicated loss of motive power position.	Testing of the remotely operated valves will be performed under the conditions of loss of motive power.	After loss of motive power, each remotely operated valve identified in Table 2.3.13-1 assumes the indicated loss of motive power position.
476	2.3.13.12	12. Controls exist in the MCR to cause the valves identified in Table 2.3.13-2 to perform the listed function.	Testing will be performed on the components in Table 2.3.13-2 using controls in the MCR.	Controls in the MCR cause valves identified in Table 2.3.13-2 to perform the listed functions.



**Figure 2.3.13-1
Primary Sampling System**

ATTACHMENT TO LICENSE AMENDMENT NO. 8

TO FACILITY COMBINED LICENSE NO. NPF-94

DOCKET NO. 52-028

Replace the following pages of the Facility Combined License No. NPF-94 with the attached revised pages. The revised pages are identified by amendment number and contain marginal lines indicating the areas of change.

Facility Combined License No. NPF-94

REMOVE

INSERT

7

7

Facility Combined License No. NPF-94

Appendix C - Inspections, Tests, Analyses and Acceptance Criteria

REMOVE

INSERT

C-95

C-95

C-96

C-96

C-97

C-97

C-98

C-98

C-99

C-99

C-100

C-100

C-101

C-101

C-262

C-262

C-263

C-263

C-266

C-266

C-267

C-267

- (b) SCE&G shall report any violation of a requirement in Section 2.D.(3), Section 2.D.(4), Section 2.D.(5), and Section 2.D.(6) of this license within 24 hours. Initial notification shall be made to the NRC Operations Center in accordance with 10 CFR 50.72, with written follow up in accordance with 10 CFR 50.73.

(8) Incorporation

The Technical Specifications, Environmental Protection Plan, and ITAAC in Appendices A, B, and C, respectively of this license, as revised through Amendment No. 8, are hereby incorporated into this license.

(9) Technical Specifications

The technical specifications in Appendix A to this license become effective upon a Commission finding that the acceptance criteria in this license (ITAAC) are met in accordance with 10 CFR 52.103(g).

(10) Operational Program Implementation

SCE&G shall implement the programs or portions of programs identified below, on or before the date SCE&G achieves the following milestones.

- (a) Environmental Qualification Program implemented before initial fuel load;
- (b) Reactor Vessel Material Surveillance Program implemented before initial criticality;
- (c) Preservice Testing Program implemented before initial fuel load;
- (d) Containment Leakage Rate Testing Program implemented before initial fuel load;
- (e) Fire Protection Program
 - 1. The fire protection measures in accordance with Regulatory Guide (RG) 1.189 for designated storage building areas (including adjacent fire areas that could affect the storage area) implemented before initial receipt of byproduct or special nuclear materials that are not fuel (excluding exempt quantities as described in 10 CFR 30.18);
 - 2. The fire protection measures in accordance with RG 1.189 for areas containing new fuel (including adjacent areas where a fire could affect the new fuel) implemented before receipt of fuel onsite;

Table 2.2.1-2		
Line Name	Line Number	ASME Code Section III
Instrument Air In	CAS-PL-L015	Yes
Service Air In	CAS-PL-L204	Yes
Component Cooling Water Supply to Containment	CCS-PL-L201	Yes
Component Cooling Water Outlet from Containment	CCS-PL-L207	Yes
Demineralized Water In	DWS-PL-L245, L230	Yes
Fire Protection Supply to Containment	FPS-PL-L107	Yes
Containment Atmosphere Return Line	PSS-PL-L038	Yes
Common Primary Sample Line A/B	PSS-PL-T005A/B	Yes
Containment Atmosphere Sample Line	PSS-PL-T031	Yes
Spent Fuel Pool Cooling Discharge	SFS-PL-L017	Yes
Spent Fuel Pool Cooling Suction from Containment	SFS-PL-L038	Yes
Containment Purge Inlet to Containment	VFS-PL-L104, L105, L106	Yes
Containment Purge Discharge from Containment	VFS-PL-L203, L204, L205, L800, L801A/B, L803, L804, L805A/B	Yes
Fan Cooler Supply Line to Containment	VWS-PL-L032	Yes
Fan Cooler Return Line from Containment	VWS-PL-L055	Yes
RCDT Gas Out	WLS-PL-L022	Yes
Waste Sump Out	WLS-PL-L073	Yes

Table 2.2.1-3				
Inspections, Tests, Analyses, and Acceptance Criteria				
No.	ITAAC No.	Design Commitment	Inspections, Tests, Analyses	Acceptance Criteria
90	2.2.01.01	1. The functional arrangement of the CNS and associated systems is as described in the Design Description of this Section 2.2.1.	Inspection of the as-built system will be performed.	The as-built CNS conforms with the functional arrangement as described in the Design Description of this Section 2.2.1.
91	2.2.01.02a	2.a) The components identified in Table 2.2.1-1 as ASME Code Section III are designed and constructed in accordance with ASME Code Section III requirements.	Inspection will be conducted of the as-built components as documented in the ASME design reports.	The ASME Code Section III design reports exist for the as-built components identified in Table 2.2.1-1 as ASME Code Section III.

Table 2.2.1-3
Inspections, Tests, Analyses, and Acceptance Criteria

No.	ITAAC No.	Design Commitment	Inspections, Tests, Analyses	Acceptance Criteria
92	2.2.01.02b	2.b) The piping identified in Table 2.2.1-2 as ASME Code Section III is designed and constructed in accordance with ASME Code Section III requirements.	Inspection will be conducted of the as-built piping as documented in the ASME design reports.	The ASME Code Section III design reports exist for the as-built piping identified in Table 2.2.1-2 as ASME Code Section III.
93	2.2.01.03a	3.a) Pressure boundary welds in components identified in Table 2.2.1-1 as ASME Code Section III meet ASME Code Section III requirements.	Inspection of the as-built pressure boundary welds will be performed in accordance with the ASME Code Section III.	A report exists and concludes that the ASME Code Section III requirements are met for non-destructive examination of pressure boundary welds.
94	2.2.01.03b	3.b) Pressure boundary welds in piping identified in Table 2.2.1-2 as ASME Code Section III meet ASME Code Section III requirements.	Inspection of the as-built pressure boundary welds will be performed in accordance with the ASME Code Section III.	A report exists and concludes that the ASME Code Section III requirements are met for non-destructive examination of pressure boundary welds.
95	2.2.01.04a.i	4.a) The components identified in Table 2.2.1-1 as ASME Code Section III retain their pressure boundary integrity at their design pressure.	i) A hydrostatic or pressure test will be performed on the components required by the ASME Code Section III to be tested.	i) A report exists and concludes that the results of the pressure test of the components identified in Table 2.2.1-1 as ASME Code Section III conform with the requirements of the ASME Code Section III.
96	2.2.01.04a.ii	4.a) The components identified in Table 2.2.1-1 as ASME Code Section III retain their pressure boundary integrity at their design pressure.	ii) Impact testing will be performed on the containment and pressure-retaining penetration materials in accordance with the ASME Code Section III, Subsection NE, to confirm the fracture toughness of the materials.	ii) A report exists and concludes that the containment and pressure-retaining penetration materials conform with fracture toughness requirements of the ASME Code Section III.
97	2.2.01.04b	4.b) The piping identified in Table 2.2.1-2 as ASME Code Section III retains its pressure boundary integrity at its design pressure.	A hydrostatic or pressure test will be performed on the piping required by the ASME Code Section III to be pressure tested.	A report exists and concludes that the results of the pressure test of the piping identified in Table 2.2.1-2 as ASME Code Section III conform with the requirements of the ASME Code Section III.
98	2.2.01.05.i	5. The seismic Category I equipment identified in Table 2.2.1-1 can withstand seismic design basis loads without loss of structural integrity and safety function.	i) Inspection will be performed to verify that the seismic Category I equipment and valves identified in Table	i) The seismic Category I equipment identified in Table 2.2.1-1 is located on the Nuclear Island.

Table 2.2.1-3

Inspections, Tests, Analyses, and Acceptance Criteria

No.	ITAAC No.	Design Commitment	Inspections, Tests, Analyses	Acceptance Criteria
			2.2.1-1 are located on the Nuclear Island.	
99	2.2.01.05.ii	5. The seismic Category I equipment identified in Table 2.2.1-1 can withstand seismic design basis loads without loss of structural integrity and safety function.	ii) Type tests, analyses, or a combination of type tests and analyses of seismic Category I equipment will be performed.	ii) A report exists and concludes that the seismic Category I equipment can withstand seismic design basis dynamic loads without loss of structural integrity and safety function.
100	2.2.01.05.iii	5. The seismic Category I equipment identified in Table 2.2.1-1 can withstand seismic design basis loads without loss of structural integrity and safety function.	iii) Inspection will be performed for the existence of a report verifying that the as-built equipment including anchorage is seismically bounded by the tested or analyzed conditions.	iii) The as-built equipment including anchorage is seismically bounded by the tested or analyzed conditions.
101	2.2.01.06a.i	6.a) The Class 1E equipment identified in Table 2.2.1-1 as being qualified for a harsh environment can withstand the environmental conditions that would exist before, during, and following a design basis accident without loss of safety function for the time required to perform the safety function.	i) Type tests, analyses, or a combination of type tests and analyses will be performed on Class 1E equipment located in a harsh environment.	i) A report exists and concludes that the Class 1E equipment identified in Table 2.2.1-1 as being qualified for a harsh environment can withstand the environmental conditions that would exist before, during, and following a design basis accident without loss of safety function for the time required to perform the safety function.
102	2.2.01.06a.ii	6.a) The Class 1E equipment identified in Table 2.2.1-1 as being qualified for a harsh environment can withstand the environmental conditions that would exist before, during, and following a design basis accident without loss of safety function for the time required to perform the safety function.	ii) Inspection will be performed of the as-built Class 1E equipment and the associated wiring, cables, and terminations located in a harsh environment.	ii) A report exists and concludes that the as-built Class 1E equipment and the associated wiring, cables, and terminations identified in Table 2.2.1-1 as being qualified for a harsh environment are bounded by type tests, analyses, or a combination of type tests and analyses.
103	2.2.01.06b	6.b) The Class 1E components identified in Table 2.2.1-1 are powered from their respective Class 1E division.	Testing will be performed by providing a simulated test signal in each Class 1E division.	A simulated test signal exists at the Class 1E equipment identified in Table 2.2.1-1 when the assigned Class 1E division

Table 2.2.1-3

Inspections, Tests, Analyses, and Acceptance Criteria

No.	ITAAC No.	Design Commitment	Inspections, Tests, Analyses	Acceptance Criteria
				is provided the test signal.
104	2.2.01.06c	6.c) Separation is provided between CNS Class 1E divisions, and between Class 1E divisions and non-Class 1E cable.	See ITAAC Table 3.3-6, item 7.d.	See ITAAC Table 3.3-6, item 7.d.
105	2.2.01.06d.i	6.d) The non-Class 1E electrical penetrations identified in Table 2.2.1-1 as being qualified for a harsh environment can withstand the environmental conditions that would exist before, during, and following a design basis accident without loss of containment pressure boundary integrity.	i) Type tests, analyses, or a combination of type tests and analyses will be performed on non-Class 1E electrical penetrations located in a harsh environment.	i) A report exists and concludes that the non-Class 1E electrical penetrations identified in Table 2.2.1-1 as being qualified for a harsh environment can withstand the environmental conditions that would exist before, during, and following a design basis accident without loss of containment pressure boundary integrity.
106	2.2.01.06d.ii	6.d) The non-Class 1E electrical penetrations identified in Table 2.2.1-1 as being qualified for a harsh environment can withstand the environmental conditions that would exist before, during, and following a design basis accident without loss of containment pressure boundary integrity.	ii) Inspection will be performed of the as-built non-Class 1E electrical penetrations located in a harsh environment.	ii) A report exists and concludes that the as-built non-Class 1E electrical penetrations identified in Table 2.2.1-1 as being qualified for a harsh environment are bounded by type tests, analyses, or a combination of type tests and analyses.
107	2.2.01.07.i	7. The CNS provides the safety-related function of containment isolation for containment boundary integrity and provides a barrier against the release of fission products to the atmosphere.	i) A containment integrated leak rate test will be performed.	i) The leakage rate from containment for the integrated leak rate test is less than L_a .
108	2.2.01.07.ii	7. The CNS provides the safety-related function of containment isolation for containment boundary integrity and provides a barrier against the release of fission products to the atmosphere.	ii) Testing will be performed to demonstrate that remotely operated containment isolation valves close within the required response times.	ii) The containment purge isolation valves (VFS-PL-V003, -V004, -V009, and -V010) close within 20 seconds, containment vacuum relief isolation valves (VFS-PL-V800A and -V800B) close within 30 seconds, SGS valves SGS-PL-V040A/B and SGS-PL-V057A/B are covered in subsection 2.2.4, Table 2.2.4-4 (item 11.b.ii)

Table 2.2.1-3

Inspections, Tests, Analyses, and Acceptance Criteria

No.	ITAAC No.	Design Commitment	Inspections, Tests, Analyses	Acceptance Criteria
				and all other containment isolation valves close within 60 seconds upon receipt of an actuation signal.
109	2.2.01.08	8. Containment electrical penetration assemblies are protected against currents that are greater than the continuous ratings.	An analysis for the as-built containment electrical penetration assemblies will be performed to demonstrate (1) that the maximum current of the circuits does not exceed the continuous rating of the containment electrical penetration assembly, or (2) that the circuits have redundant protection devices in series and that the redundant current protection devices are coordinated with the containment electrical penetration assembly's rated short circuit thermal capacity data and prevent current from exceeding the continuous current rating of the containment electrical penetration assembly.	Analysis exists for the as-built containment electrical penetration assemblies and concludes that the penetrations are protected against currents which are greater than their continuous ratings.
110	2.2.01.09	9. Safety-related displays identified in Table 2.2.1-1 can be retrieved in the MCR.	Inspection will be performed for retrievability of the safety-related displays in the MCR.	Safety-related displays identified in Table 2.2.1-1 can be retrieved in the MCR.
111	2.2.01.10a	10.a) Controls exist in the MCR to cause those remotely operated valves identified in Table 2.2.1-1 to perform active functions.	Stroke testing will be performed on remotely operated valves identified in Table 2.2.1-1 using the controls in the MCR.	Controls in the MCR operate to cause remotely operated valves identified in Table 2.2.1-1 to perform active safety functions.
112	2.2.01.10b	10.b) The valves identified in Table 2.2.1-1 as having PMS control perform an active safety function after receiving a signal from the PMS.	Testing will be performed on remotely operated valves listed in Table 2.2.1-1 using real or simulated signals into the PMS.	The remotely operated valves identified in Table 2.2.1-1 as having PMS control perform the active function identified in the table after receiving a signal from PMS.
113	2.2.01.10c	10.c) The valves identified in Table 2.2.1-1 as having DAS control perform an active safety function after receiving a signal	Testing will be performed on remotely operated valves listed in Table 2.2.1-1 using	The remotely operated valves identified in Table 2.2.1-1 as having

Table 2.2.1-3

Inspections, Tests, Analyses, and Acceptance Criteria

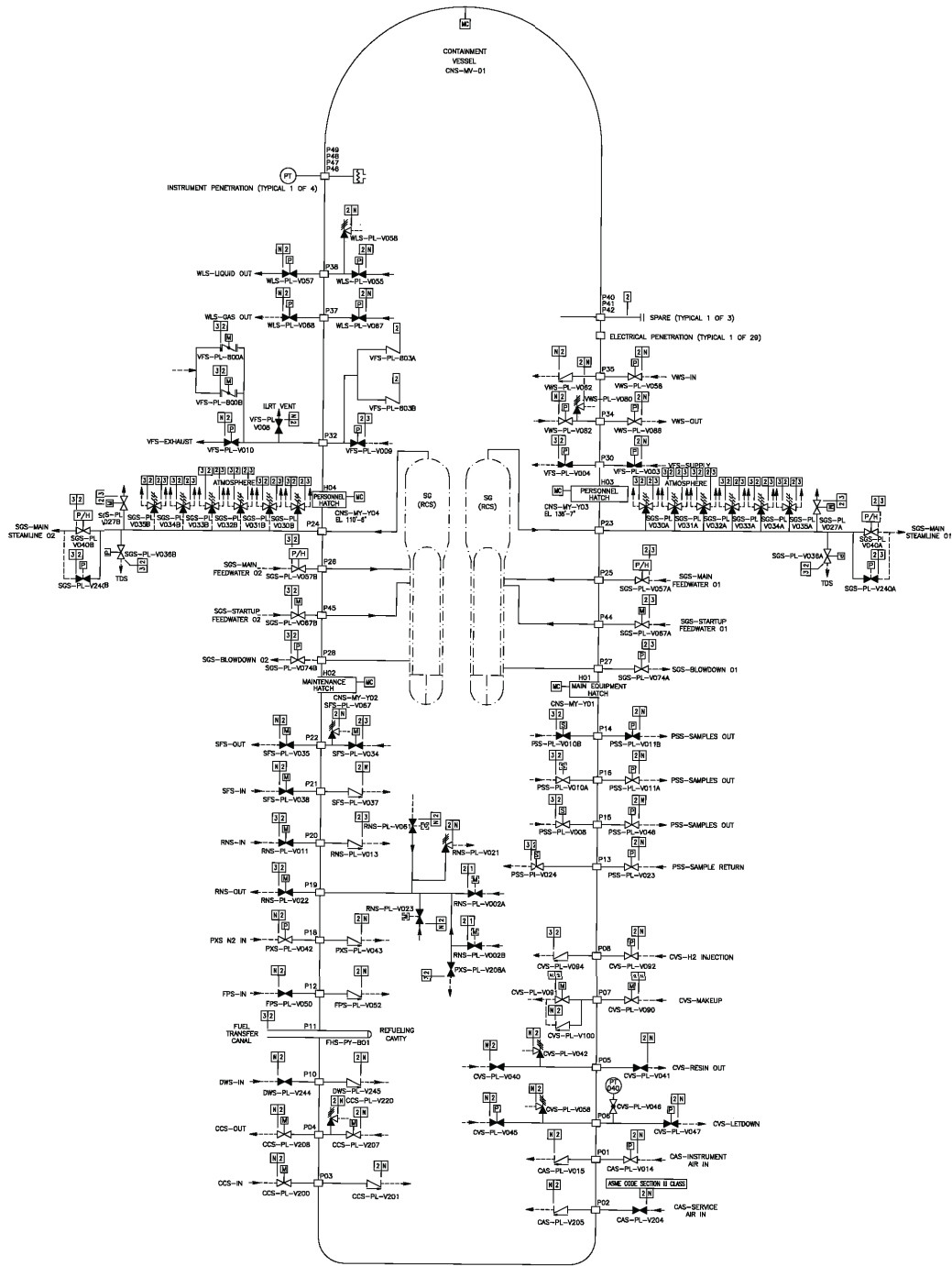
No.	ITAAC No.	Design Commitment	Inspections, Tests, Analyses	Acceptance Criteria
		from DAS.	real or simulated signals into the DAS.	DAS control perform the active function identified in the table after receiving a signal from DAS.
114	2.2.01.11a.i	11.a) The motor-operated and check valves identified in Table 2.2.1-1 perform an active safety-related function to change position as indicated in the table.	i) Tests or type tests of motor-operated valves will be performed to demonstrate the capability of each valve to operate under design conditions.	i) A test report exists and concludes that each motor-operated valve changes position as indicated in Table 2.2.1-1 under design conditions.
115	2.2.01.11a.ii	11.a) The motor-operated and check valves identified in Table 2.2.1-1 perform an active safety-related function to change position as indicated in the table.	ii) Inspection will be performed for the existence of a report verifying that the as-built motor-operated valves are bounded by the tests or type tests.	ii) A report exists and concludes that the as-built motor-operated valves are bounded by the tests or type tests.
116	2.2.01.11a.iii	11.a) The motor-operated and check valves identified in Table 2.2.1-1 perform an active safety-related function to change position as indicated in the table.	iii) Tests of the motor-operated valves will be performed under preoperational flow, differential pressure, and temperature conditions.	iii) Each motor-operated valve changes position as indicated in Table 2.2.1-1 under pre-operational test conditions.
117	2.2.01.11a.iv	11.a) The motor-operated and check valves identified in Table 2.2.1-1 perform an active safety-related function to change position as indicated in the table.	iv) Exercise testing of the check valves with active safety functions identified in Table 2.2.1-1 will be performed under preoperational test pressure, temperature and fluid flow conditions.	iv) Each check valve changes position as indicated in Table 2.2.1-1.
118	2.2.01.11b	11.b) After loss of motive power, the remotely operated valves identified in Table 2.2.1-1 assume the indicated loss of motive power position.	Testing of the remotely operated valves will be performed under the conditions of loss of motive power.	After loss of motive power, each remotely operated valve identified in Table 2.2.1-1 assumes the indicated loss of motive power position.

Table 2.2.1-4

Component Name	Tag No.	Component Location
Containment Vessel	CNS-MV-01	Shield Building

Figure 2.2.1-1
Containment System

Amendment No. 6 8



C-101

1. The functional arrangement of the PSS is as described in the Design Description of this Section 2.3.13.
2. The components identified in Table 2.3.13-1 as ASME Code Section III are designed and constructed in accordance with ASME Code Section III requirements.
3. Pressure boundary welds in components identified in Table 2.3.13-1 as ASME Code Section III meet ASME Code Section III requirements.
4. The components identified in Table 2.3.13-1 as ASME Code Section III retain their pressure boundary integrity at their design pressure.
5. The seismic Category I equipment identified in Table 2.3.13-1 can withstand seismic design basis loads without loss of safety function.
6.
 - a) The Class 1E equipment identified in Table 2.3.13-1 as being qualified for a harsh environment can withstand the environmental conditions that would exist before, during, and following a design basis accident without loss of their safety function, for the time required to perform the safety function.
 - b) The Class 1E components identified in Table 2.3.13-1 are powered from their respective Class 1E division.
 - c) Separation is provided between PSS Class 1E divisions, and between Class 1E divisions and non-Class 1E divisions.
7. The PSS provides the safety-related function of preserving containment integrity by isolation of the PSS lines penetrating the containment.
8. The PSS provides the nonsafety-related function of providing the capability of obtaining reactor coolant and containment atmosphere samples.
9. Safety-related displays identified in Table 2.3.13-1 can be retrieved in the MCR.
10.
 - a) Controls exist in the MCR to cause those remotely operated valves identified in Table 2.3.13-1 to perform active functions.
 - b) The valves identified in Table 2.3.13-1 as having protection and safety monitoring system (PMS) control perform an active function after receiving a signal from the PMS.
11.
 - a) Deleted
 - b) After loss of motive power, the remotely operated valves identified in Table 2.3.13-1 assume the indicated loss of motive power position.
12. Controls exist in the MCR to cause the valves identified in Table 2.3.13-2 to perform the listed function.

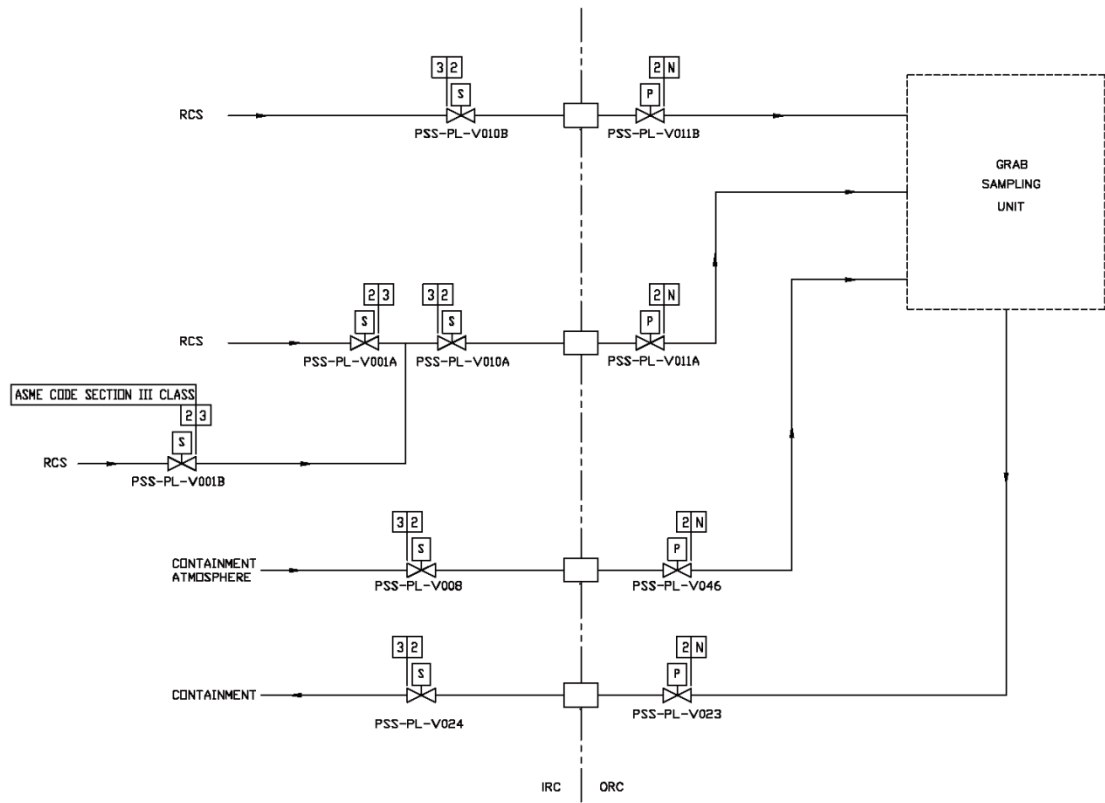
Table 2.3.13-1									
Equipment Name	Tag No.	ASME Code Section III	Seismic Cat. I	Remotely Operated Valve	Class IE/Qual. for Harsh Envir.	Safety-Related Display	Control PMS/DAS	Active Function	Loss of Motive Power Position
Containment Air Sample Containment Isolation Valve Inside Reactor Containment (IRC)	PSS-PL-V008	Yes	Yes	Yes	Yes/Yes	Yes (Valve Position)	Yes/No	Transfer Closed	Closed
Liquid Sample Line Containment Isolation Valve IRC	PSS-PL-V010A	Yes	Yes	Yes	Yes/Yes	Yes (Valve Position)	Yes/No	Transfer Closed	Closed
Liquid Sample Line Containment Isolation Valve IRC	PSS-PL-V010B	Yes	Yes	Yes	Yes/Yes	Yes (Valve Position)	Yes/No	Transfer Closed	Closed
Liquid Sample Line Containment Isolation Valve Outside Reactor Containment (ORC)	PSS-PL-V011A	Yes	Yes	Yes	Yes/No	Yes (Valve Position)	Yes/No	Transfer Closed	Closed
Liquid Sample Line Containment Isolation Valve ORC	PSS-PL-V011B	Yes	Yes	Yes	Yes/No	Yes (Valve Position)	Yes/No	Transfer Closed	Closed
Sample Return Line Containment Isolation Valve ORC	PSS-PL-V023	Yes	Yes	Yes	Yes/No	Yes (Valve Position)	Yes/No	Transfer Closed	Closed
Sample Return Containment Isolation Valve IRC	PSS-PL-V024	Yes	Yes	Yes	Yes/Yes	Yes (Valve Position)	Yes/No	Transfer Closed	Closed
Air Sample Line Containment Isolation Valve ORC	PSS-PL-V046	Yes	Yes	Yes	Yes/No	Yes (Valve Position)	Yes/No	Transfer Closed	Closed

Note: A dash (-) indicates not applicable.

Table 2.3.13-3

Inspections, Tests, Analyses, and Acceptance Criteria

No.	ITAAC No.	Design Commitment	Inspections, Tests, Analyses	Acceptance Criteria
470	2.3.13.08	8. The PSS provides the nonsafety-related function of providing the capability of obtaining reactor coolant and containment atmosphere samples.	Testing will be performed to obtain samples of the reactor coolant and containment atmosphere.	A sample is drawn from the reactor coolant and the containment atmosphere.
471	2.3.13.09	9. Safety-related displays identified in Table 2.3.13-1 can be retrieved in the MCR.	Inspection will be performed for retrievability of the safety-related displays in the MCR.	The safety-related displays identified in Table 2.3.13-1 can be retrieved in the MCR.
472	2.3.13.10a	10.a) Controls exist in the MCR to cause those remotely operated valves identified in Table 2.3.13-1 to perform active functions.	Stroke testing will be performed on the remotely operated valves identified in Table 2.3.13-1 using the controls in the MCR.	Controls in the MCR operate to cause those remotely operated valves identified in Table 2.3.13-1 to perform active functions.
473	2.3.13.10b	10.b) The valves identified in Table 2.3.13-1 as having PMS control perform an active function after receiving a signal from the PMS.	Testing will be performed on remotely operated valves listed in Table 2.3.13-1 using real or simulated signals into the PMS.	The remotely operated valves identified in Table 2.3.13-1 as having PMS control perform the active function identified in the table after receiving a signal from the PMS.
474	2.3.13.11a	11.a) Deleted		
475	2.3.13.11b	11.b) After loss of motive power, the remotely operated valves identified in Table 2.3.13-1 assume the indicated loss of motive power position.	Testing of the remotely operated valves will be performed under the conditions of loss of motive power.	After loss of motive power, each remotely operated valve identified in Table 2.3.13-1 assumes the indicated loss of motive power position.
476	2.3.13.12	12. Controls exist in the MCR to cause the valves identified in Table 2.3.13-2 to perform the listed function.	Testing will be performed on the components in Table 2.3.13-2 using controls in the MCR.	Controls in the MCR cause valves identified in Table 2.3.13-2 to perform the listed functions.



**Figure 2.3.13-1
Primary Sampling System**