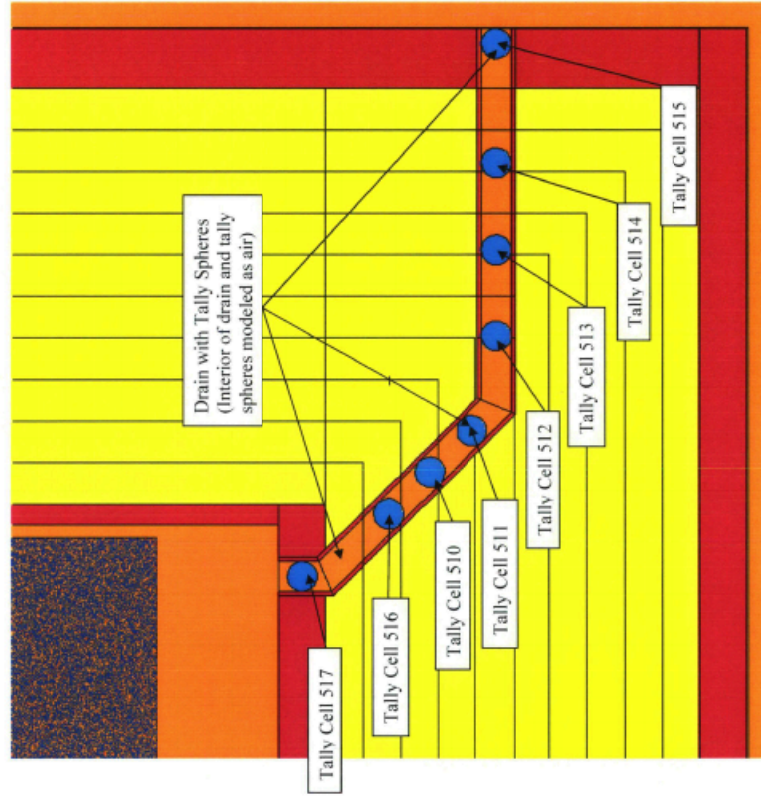
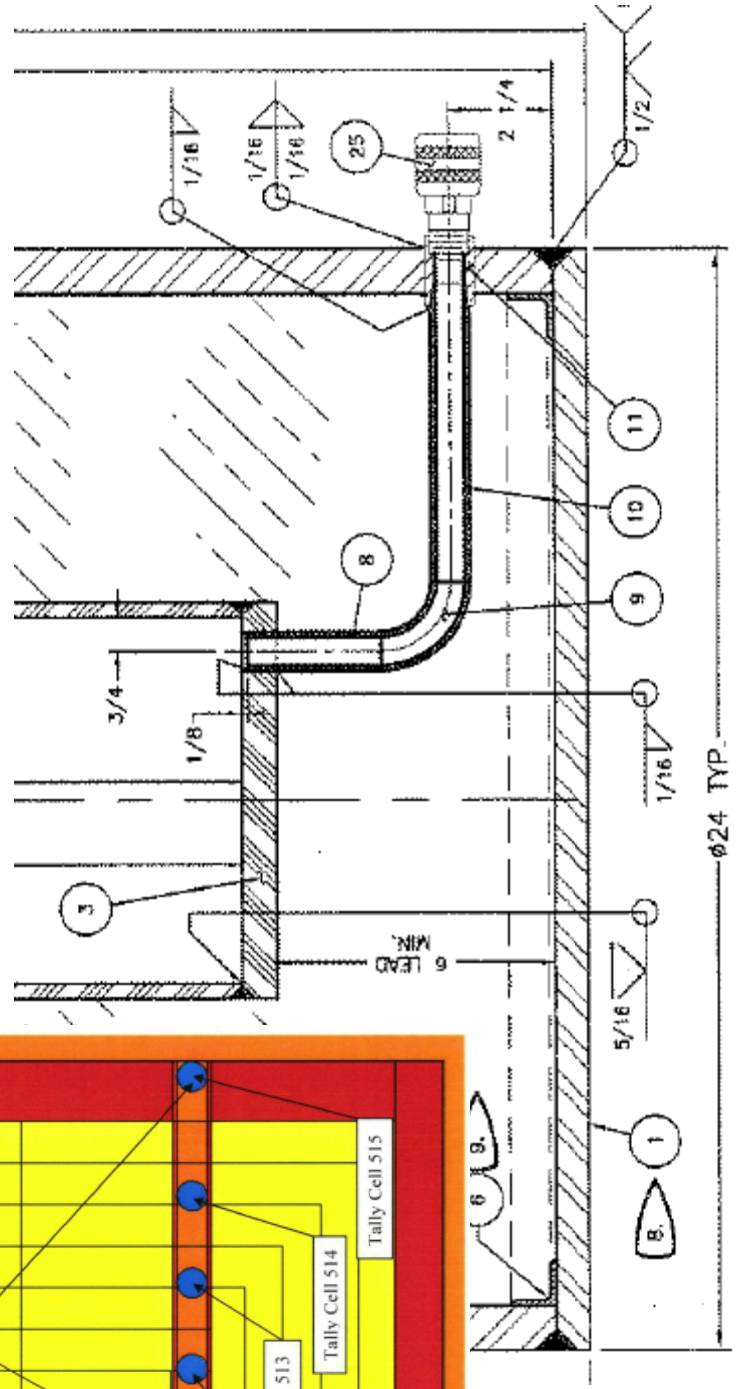


MCNP model- from Addendum Chapter 5

Figure 5-6. Expanded Elevation View of Insert Drain Line Region



SAR drawing- from Addendum Chapter 1



Comparison of Shielding Results



- Existing “Insert A” Addendum vs. Proposed Change

Normal Conditions of Transport	Package Surface mrem/h			2 Meters from Package Surface mrem/h		
	Top	Side	Bottom	Side	Bottom	Side
Existing Rev. 20 SAR	2.9	0.8	6.5	0.1	0.1	0.1
Proposed Change	5.2	0.9	4.0	0.1	0.1	0.1
10 CFR 71.47(b) Limit	200	200	200	200	200	10

- 2.9 vs. 5.2: Now model annular gap at max value.
- 6.5 vs. 4.0: Now model package surface at IL vs. cask body.

Hypothetical Accident Conditions	1 Meter from Package Surface mrem/h		
	Top	Side	Bottom
Existing Rev. 20 SAR	44.5	27.8	27.5
Proposed Change	2.6	0.2	1.5
10 CFR 71.51(a)(2) Limit	1000	1000	1000

- HACs: Now model 1m vs. contact, shored vs. not, volumetric vs. point source.
- Both old and new analyses conclude 3-4% of allowable limit.