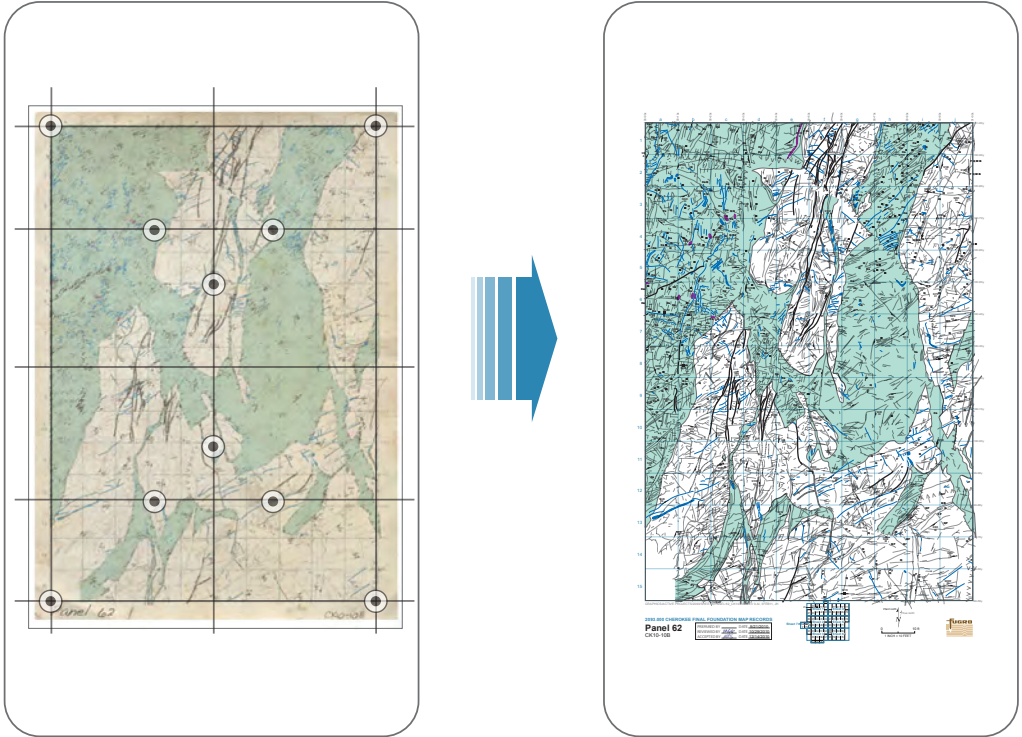


STEP 1
Duke Energy CNS hand-drawn
11"x17" vellum map panel (CK10-10B)

STEP 2
Duke Energy 600 dpi color scan of
CNS hand-drawn 11"x17" vellum map panel (62.tiff)

STEP 3
Map panel scan (A) referenced to coordinates in geographic space
(B) to eliminate distortions during archiving and scanning



STEP 4
Georectified scan of CNS hand-drawn
11"x17" vellum map panel
(IMG 62_CK10-10B_GR.tiff)

STEP 5
Georectified map panel digitized
(Panel 62_CK10-10B.ai)

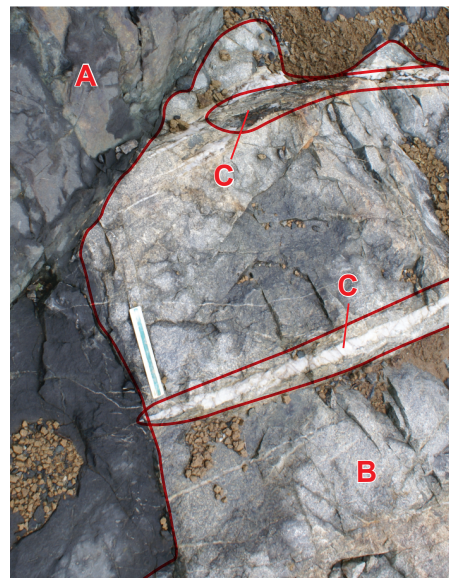
WILLIAM STATES LEE III
NUCLEAR STATION UNITS 1 & 2

Map Panel Georectification Process

FIGURE 7



View towards northeast, January 19, 2011.

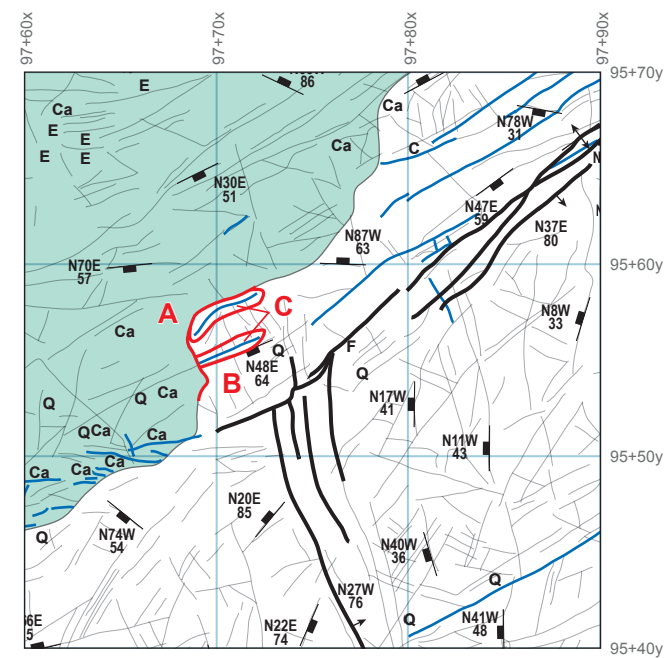


Contact between mafic gneiss and felsic gneiss with quartz veins. 6" ruler for scale.

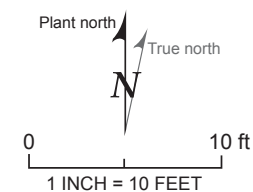
Explanation

Features

- A** Mafic gneiss
- B** Felsic gneiss
- C** Quartz vein



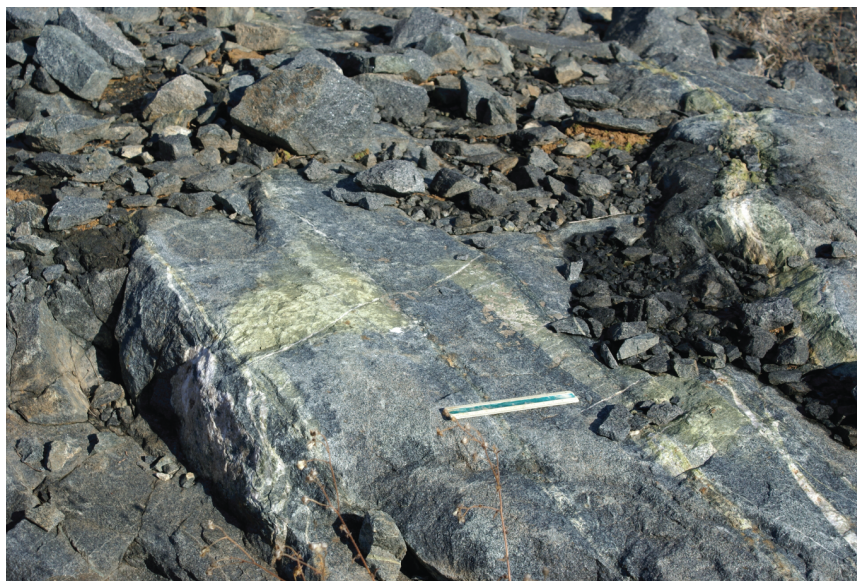
Observed features from photo recorded on digitized map Panel 52, CK10_07D



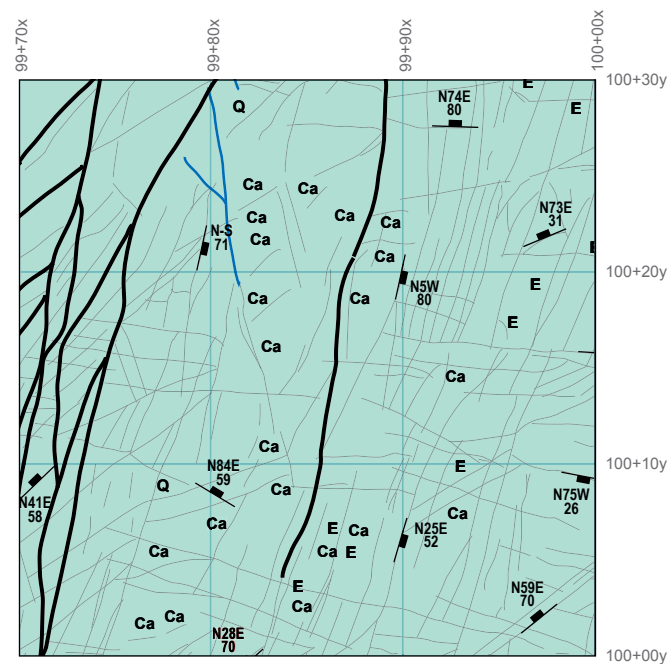
WILLIAM STATES LEE III
NUCLEAR STATION UNITS 1 & 2

Mapped Features from Panel 52
(CK10-07D) Observed in Photograph

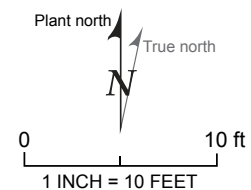
FIGURE 8



Typical mafic gneiss with calcite and epidote infilled joints. 6" ruler for apporixmate scale. View towards north, January 19, 2011.



Calcite and epidote infilled joints observed on digitized map Panel 63, CK10_10A



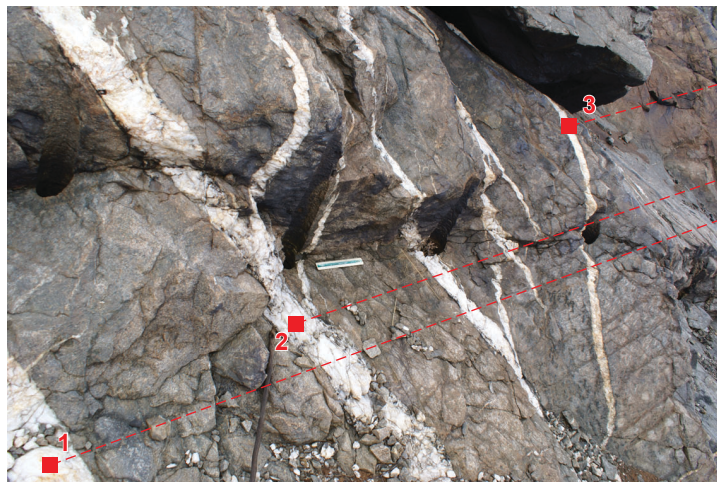
WILLIAM STATES LEE III
NUCLEAR STATION UNITS 1 & 2

Mapped Features from Panel 63
(CK10-10A) Observed in Photograph

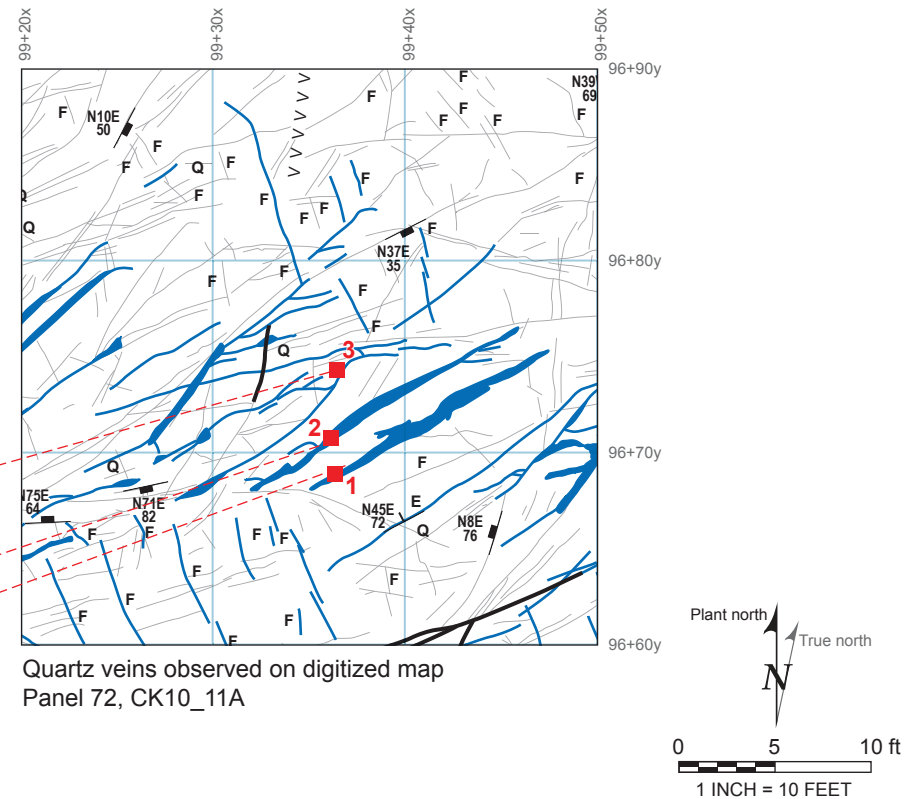
FIGURE 9



Photograph of foundation rock (felsic gneiss) observed in Panel 72, CK10_11A. View towards southwest, January 19, 2011.



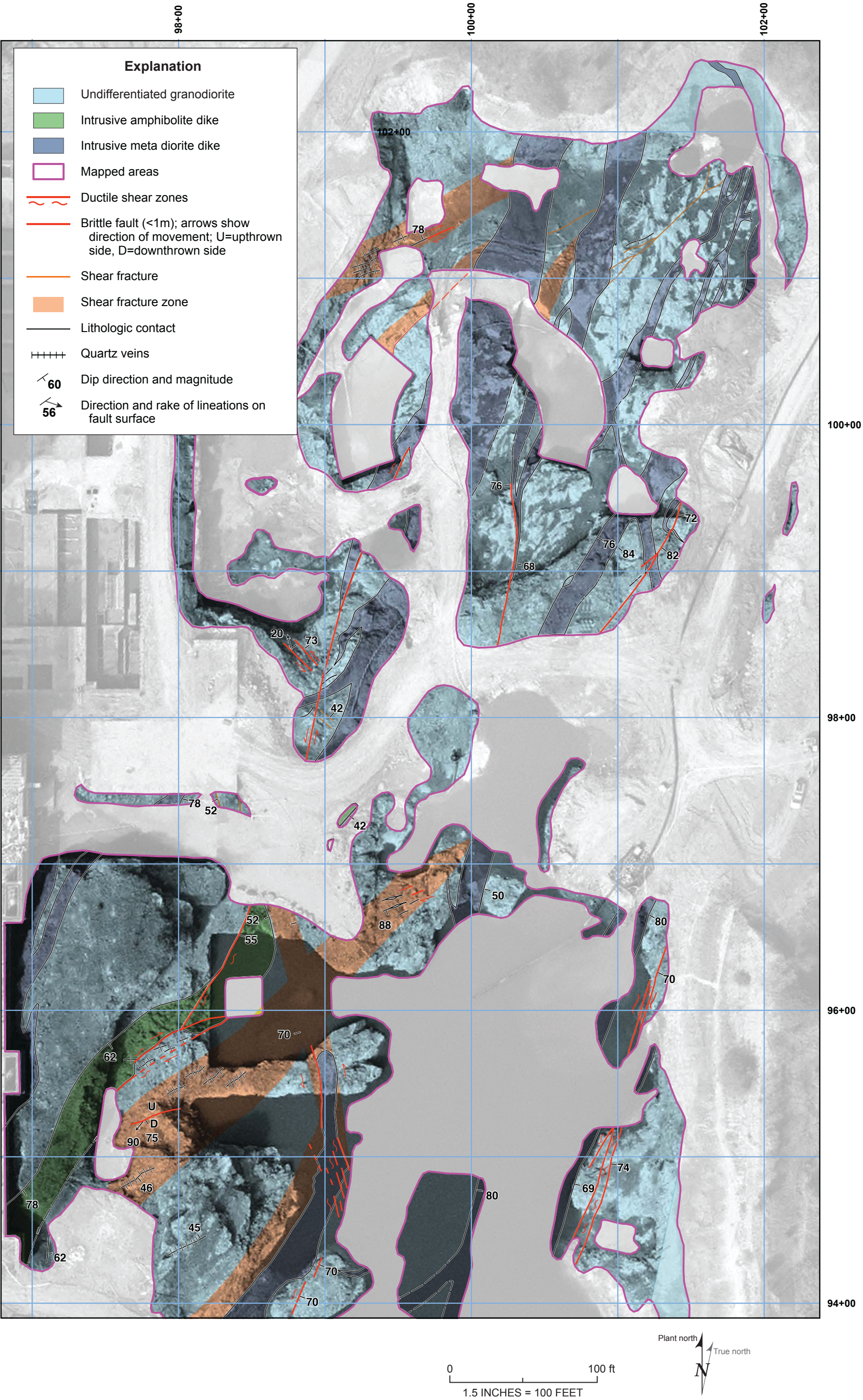
Observed quartz veins. View towards southwest, January 19, 2011.



**WILLIAM STATES LEE III
NUCLEAR STATION UNITS 1 & 2**

Mapped Features from Panel 72
(CK10-11A) Observed in Photograph

FIGURE 10



WILLIAM STATES LEE III
NUCLEAR STATION UNITS 1 & 2

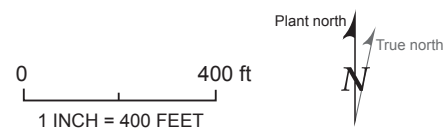
WLS Geologic Map
FIGURE 11



Aerial Imagery 2003 (Source ?????)



Aerial Imagery 2006 (Cherokee County, SC, Sanborn Project 0600702, taken 2/26/2006)



WILLIAM STATES LEE III
NUCLEAR STATION UNITS 1 & 2

Site Conditions in 2003 Pre-Site Clean Up
and 2006 During COLA Investigations

FIGURE 12