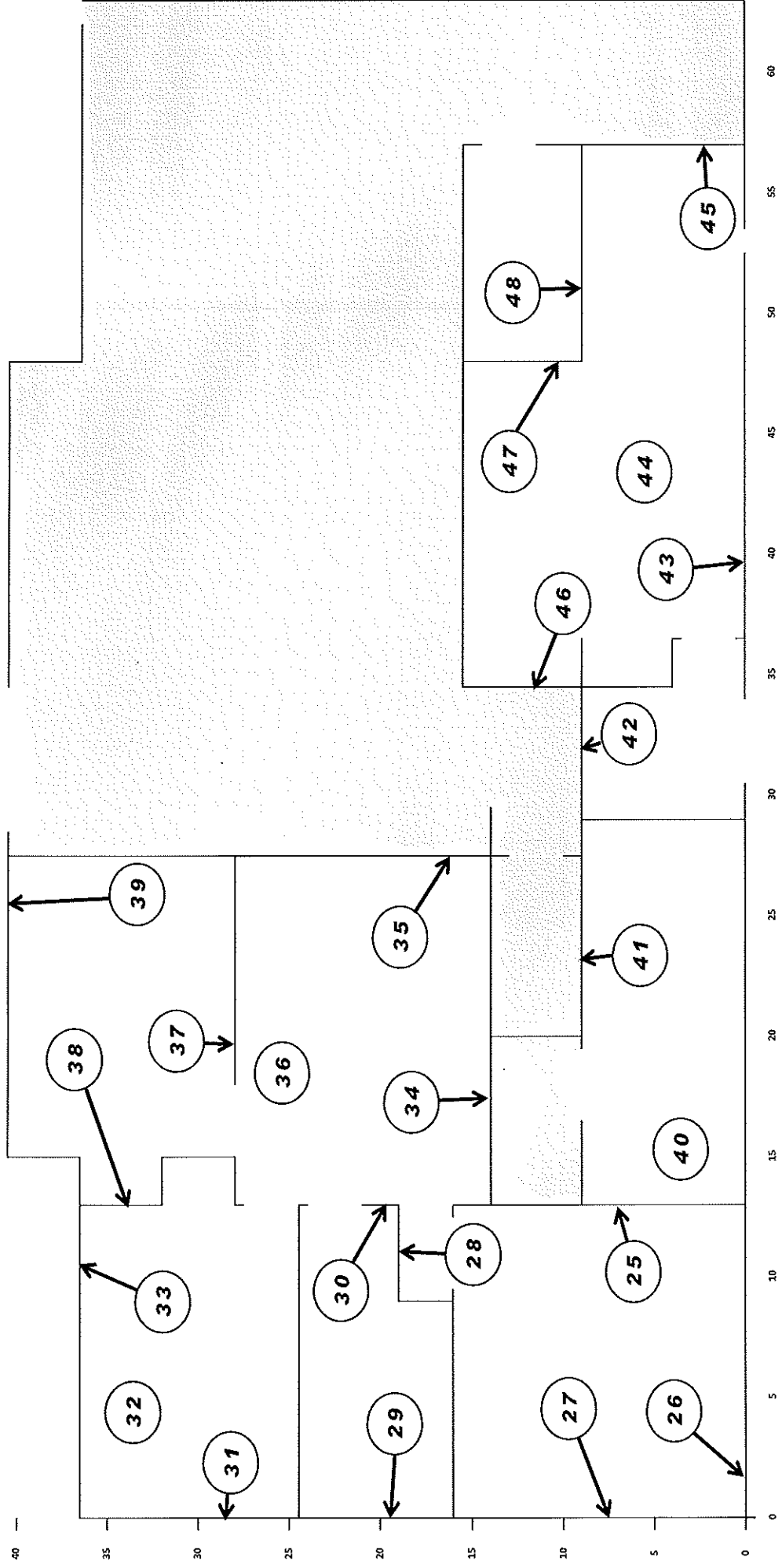
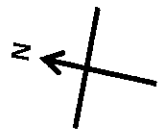


ATTACHMENT G  
RSA LABORATORIES FINAL STATUS SURVEY 21 PENDLETON DRIVE

Class III Sample Locations  
Front Entrance



Rear Entrance



## ATTACHMENT H

RSA Laboratories, 21 Pendleton Drive, Hebron, CT

Final Status Survey - Direct Measurements Results

Date: 7/10/13 & 7/11/13

Instrument: Eberline MS-2 s/n 794 w/43-37 s/n 160827

Detector area : 584 cm<sup>2</sup>

Alpha MDA: 4.50 dpm/100cm<sup>2</sup>

Alpha Efficiency 17.90%

Background Alpha Floor (120 min count) 3948 counts = 32.9 cpm

FS Point #	LOCATION	Alpha gross counts (20 Min)	Gross Alpha cpm	Alpha bkg	Net Alpha cpm	Alpha dpm/100 cm <sup>2</sup>
25	Prep Room Wall 2 - 3 Meter	726	36.3	32.9	-3.4	3.25
26	Prep Room Wall 2 - 3 Meter	644	32.2	32.9	0.7	-0.67
27	Prep Room Wall 2 - 3 Meter	650	32.5	32.9	0.4	-0.38
28	Open Area Wall 0 - 1 Meter	662	33.1	32.9	-0.2	0.19
29	Storage Wall 2 - 3 Meter	594	29.7	32.9	3.2	-3.06
30	Storage Wall 2 - 3 Meter	615	30.8	32.9	2.2	-2.06
31	Office Wall 1 - 2 Meter	709	35.5	32.9	-2.6	2.44
32	Office Ceiling	600	30.0	32.9	2.9	-2.77
33	Office Wall 0 - 1 Meter	752	37.6	32.9	-4.7	4.50
34	Open Area Wall 0 - 1 Meter	713	35.7	32.9	-2.8	2.63
35	Open Area Wall 1 - 2 Meter	745	37.3	32.9	-4.4	4.16
36	Open Area Ceiling	650	32.5	32.9	0.4	-0.38
37	Count Room Wall 1 - 2 Meter	642	32.1	32.9	0.8	-0.77
38	Count Room Wall 1 - 2 Meter	747	37.4	32.9	-4.5	4.26
39	Count Room Wall 0 - 1 Meter	745	37.3	32.9	-4.4	4.16
40	Sample Receipt Ceiling	552	27.6	32.9	5.3	-5.07
41	Samp Receip Wall 0 - 1 M	620	31.0	32.9	1.9	-1.82
42	Entrance Wall 1 - 2 Meter	590	29.5	32.9	3.4	-3.25
43	Calib Rm Wall 0 - 1 Meter	633	31.7	32.9	1.3	-1.20
44	Calib Rm Wall Ceiling	605	30.3	32.9	2.7	-2.54
45	Calib Rm Wall 1 - 2 Meter	704	35.2	32.9	-2.3	2.20
46	Calib Rm Wall 1 - 2 Meter	532	26.6	32.9	6.3	-6.03
47	Calib Rm Wall 0 - 1 Meter	546	27.3	32.9	5.6	-5.36
48	Calib Rm Wall 0 - 1 Meter	716	35.8	32.9	-2.9	2.77

## ATTACHMENT I

**RSA Laboratories, 21 Pendleton Drive, Hebron, CT**  
**Final Status Survey - Direct Measurements Results**

**Date:** 7/10/13 & 7/11/13

**Instrument:** Ludlum 2224 s/n 119815 w/43-68 s/n 094223  
 Detector area : 126 cm<sup>2</sup>

**Beta MDA:** 636 dpm/100 cm<sup>2</sup>  
**Beta Efficiency** 5.90%  
**Background Beta (5 min count)** 1383 counts = 277 cpm

FS Point #	LOCATION	Beta gross counts (2 Min)	Gross Beta cpm	Beta bkg	Net Beta cpm	Beta dpm/100 cm <sup>2</sup>
25	Prep Room Wall 2 - 3 Meter	564	282	277	5	68
26	Prep Room Wall 2 - 3 Meter	598	299	277	22	298
27	Prep Room Wall 2 - 3 Meter	475	238	277	-40	-536
28	Open Area Wall 0 - 1 Meter	574	287	277	10	136
29	Storage Wall 2 - 3 Meter	483	241	277	-36	-482
30	Storage Wall 2 - 3 Meter	544	272	277	-5	-68
31	Office Wall 1 - 2 Meter	593	297	277	20	264
32	Office Ceiling	564	282	277	5	68
33	Office Wall 0 - 1 Meter	591	296	277	19	251
34	Open Area Wall 0 - 1 Meter	569	285	277	8	102
35	Open Area Wall 1 - 2 Meter	562	281	277	4	54
36	Open Area Ceiling	527	264	277	-13	-183
37	Count Room Wall 1 - 2 Meter	544	272	277	-5	-68
38	Count Room Wall 1 - 2 Meter	569	285	277	8	102
39	Count Room Wall 0 - 1 Meter	598	299	277	22	298
40	Sample Receipt Ceiling	554	277	277	0	0
41	Samp Receipt Wall 0 - 1 M	588	294	277	17	231
42	Entrance Wall 1 - 2 Meter	552	276	277	-1	-14
43	Calib Rm Wall 0 - 1 Meter	502	251	277	-26	-353
44	Calib Rm Wall Ceiling	542	271	277	-6	-81
45	Calib Rm Wall 1 - 2 Meter	527	264	277	-13	-183
46	Calib Rm Wall 1 - 2 Meter	574	287	277	10	136
47	Calib Rm Wall 0 - 1 Meter	598	299	277	22	298
48	Calib Rm Wall 0 - 1 Meter	525	263	277	-15	-197



