

NORTHWEST

FISHER EDDIE
HEATH NO. 1
SEC. 4 T30N R52W
TD: 3,347' KB ELEV: 4074'
DRY AND ABANDONED
API NO. 26045050220000

GULF OIL CORP.
ROYAL NO. 1
SEC. 23 T30N R51W
TD: 3,956' KB ELEV: 4469'
DRY AND ABANDONED
API NO. 26045050120000

PROPOSED
MEA INJECTION WELLS
NO. 1 AND NO. 2

CURRENTLY UNASSIGNED
HOLLIBAUGH NO. 1
SEC. 12 T29N R51W
TD: 3,295' KB ELEV: 4244'
DRY AND ABANDONED
API NO. 26045210040000

TOLTEK DRILLING CO.
SMITH "A" NO. 1
SEC. 29 T29N R50W
TD: 2,901' KB ELEV: 4116'
DRY AND ABANDONED
API NO. 26045210080000

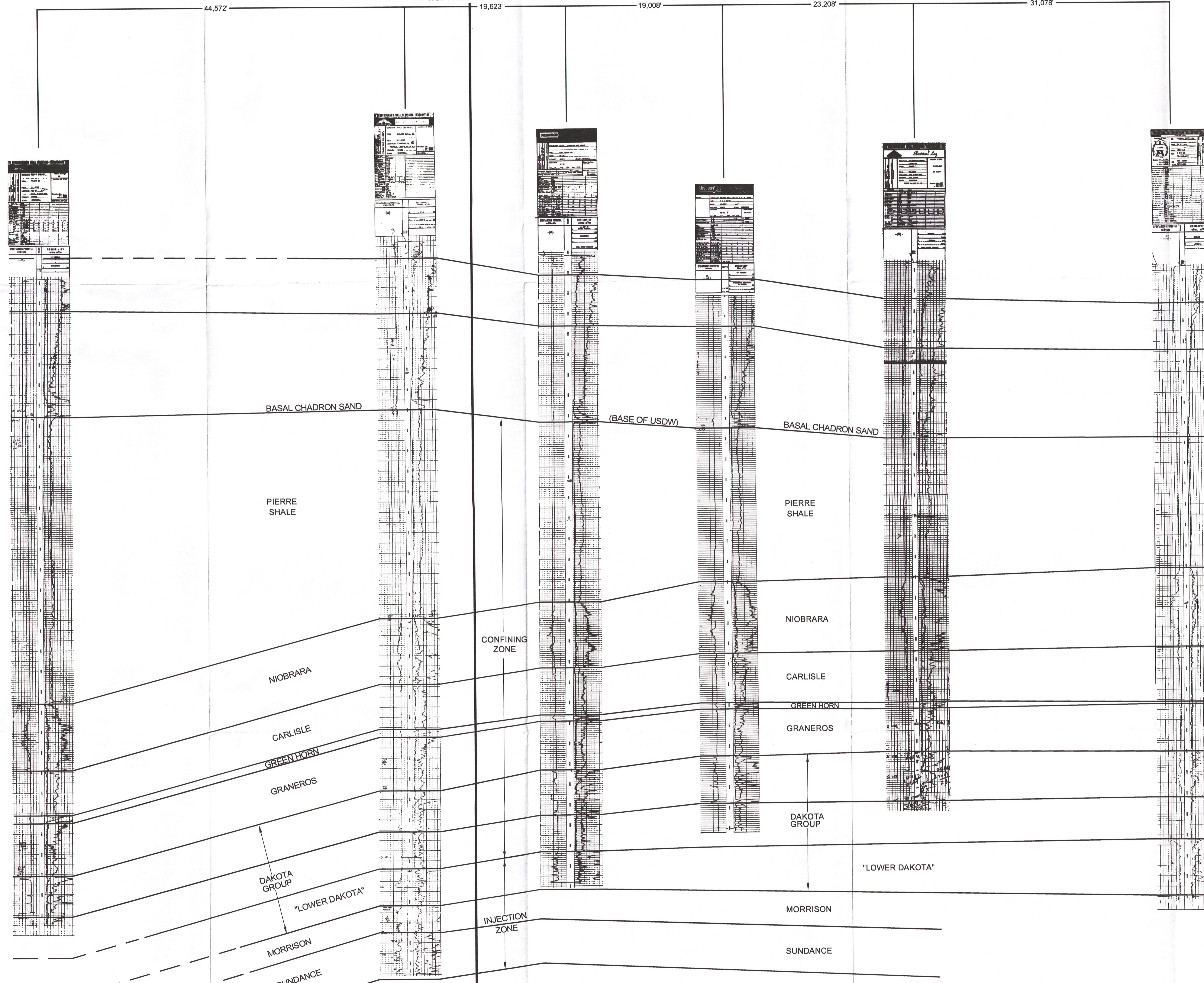
CURRENTLY UNASSIGNED
C.H. WURST NO. 1
SEC. 9 T28N R50W
TD: 3,060' KB ELEV: 4332'
DRY AND ABANDONED
API NO. 26013050500000

B.A. WILLIAMS
WILSON NO. 1
SEC. 31 T28N R50W
TD: 3,180' KB ELEV: 4256'
DRY AND ABANDONED
API NO. 26013050480000

SOUTHEAST

ELEVATION
(Feet Mean Sea Level)

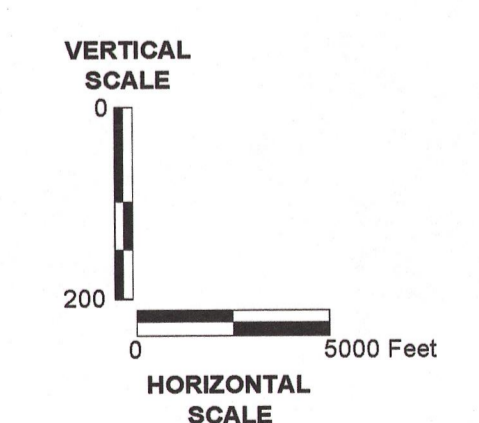
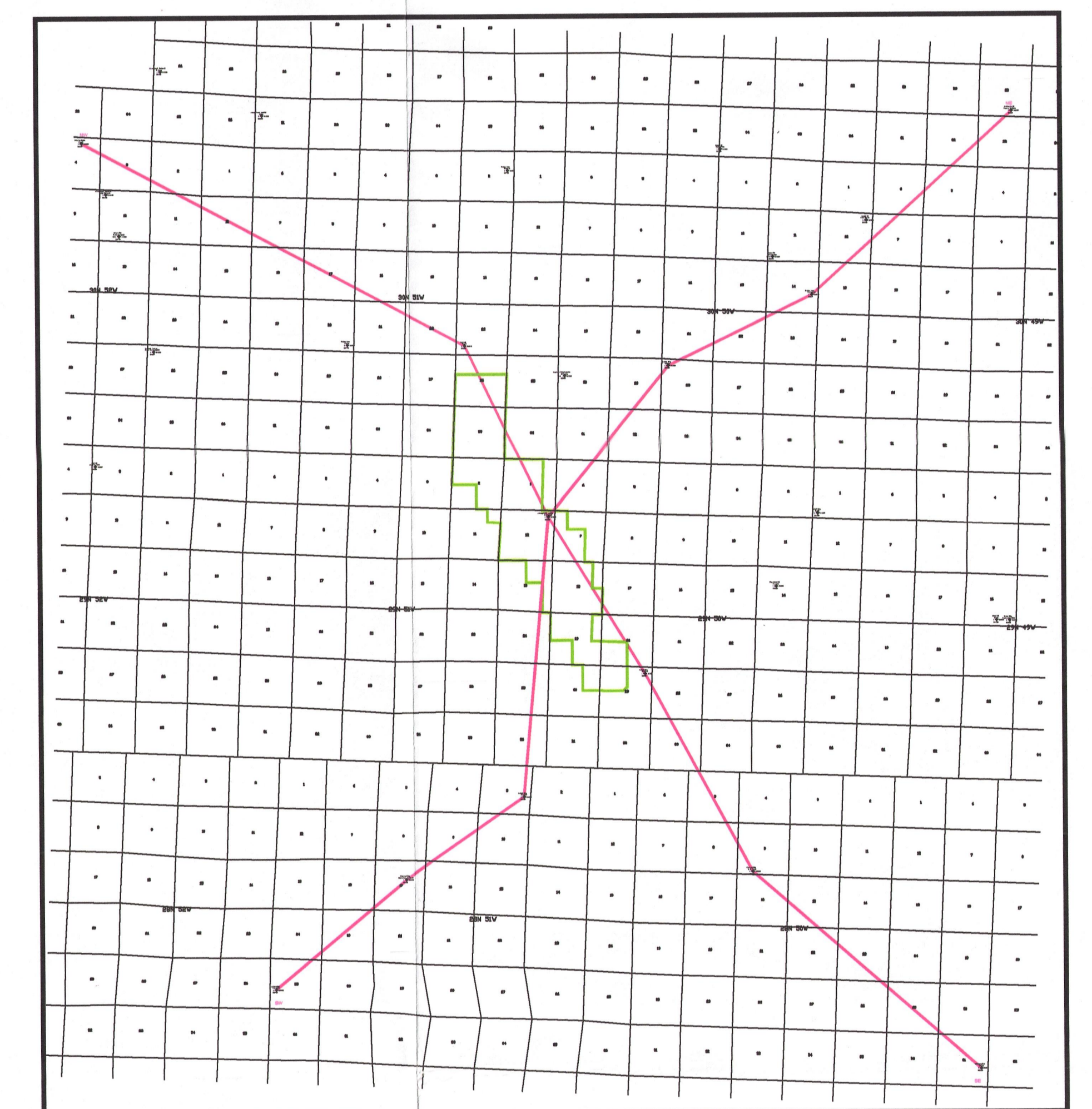
4800'
4600'
4400'
4200'
4000'
3800'
3600'
3400'
3200'
3000'
2800'
2600'
2400'
2200'
2000'
1800'
1600'
1400'
1200'
1000'
800'
600'
400'
200'
0'
-200'



PTD: +/-4,000'
(actual well depth to be determined)

ELEVATION
(Feet Mean Sea Level)

4800'
4600'
4400'
4200'
4000'
3800'
3600'
3400'
3200'
3000'
2800'
2600'
2400'
2200'
2000'
1800'
1600'
1400'
1200'
1000'
800'
600'
400'
200'
0'
-200'



SUBSURFACE

HOUSTON, TX
SOUTH BEND, IN
BATON ROUGE, LA

DRAWING 2.3-2

CROW BUTTE RESOURCES, INC.
MARSLAND EXPANSION AREA
DAWES COUNTY, NEBRASKA

**NORTHWEST - SOUTHEAST
GEOLOGIC CROSS-SECTION**

DATE: 01/19/12 CHECKED BY: JOB NO: 808753
DRAWN BY: WJD APPROVED BY: DWG. NO: