

Please Protect US Against Nuclear Disaster

2013 MAY 24 PM 1:52

1, Please Deny NRC-2013-0070

Amendment to allow Southern California Edison to Restart the San Onofre Nuclear Generating Unit 2 at 70%

The Reactor is too dangerous to start at any power level.

2, Please Expand Emergency Planning Areas to 50 miles Radius from all reactors. NRC told US citizens to evacuate 50 miles away.

RECEIVED

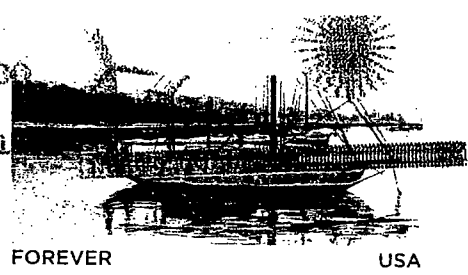
4/16/2013

78 FR 22576

361

Dr. Sarah Laren
2511 S Barrington Ave
Suite 100
West LA, CA, 90064

LOS ANGELES CA 900
01 MAY 2013 PM 1



NRe
Washington DC
20555,0001



© 2011 USPS recycled

