

**Figure D-6.**  
 BBNPP Forest Area 9  
 Potential Roost Tree Locations



**NORMANDEAU ASSOCIATES**  
 ENVIRONMENTAL CONSULTANTS  
 400 Old Reading Pike, Bldg A, Suite 101 Stowe, PA 19464

date: 12/13/10  
 prepared by: s.sherman  
 project: 22474.000

rev. date: 01/09/11, 09/15/11  
 prepared for: c. roche  
 file name: Area9\_PFOandUP\_AppendixFig\_Rev




**Legend**

-  Potential Roost Trees (Single Trunk)
-  Potential Roost Trees (Clump)
-  Survey Plots
-  Proposed Wetland Forest Clearing
-  Proposed Upland Forest Clearing
-  Proposed Wetland Forest Clearing (Revised)
-  Proposed Upland Forest Clearing (Revised)

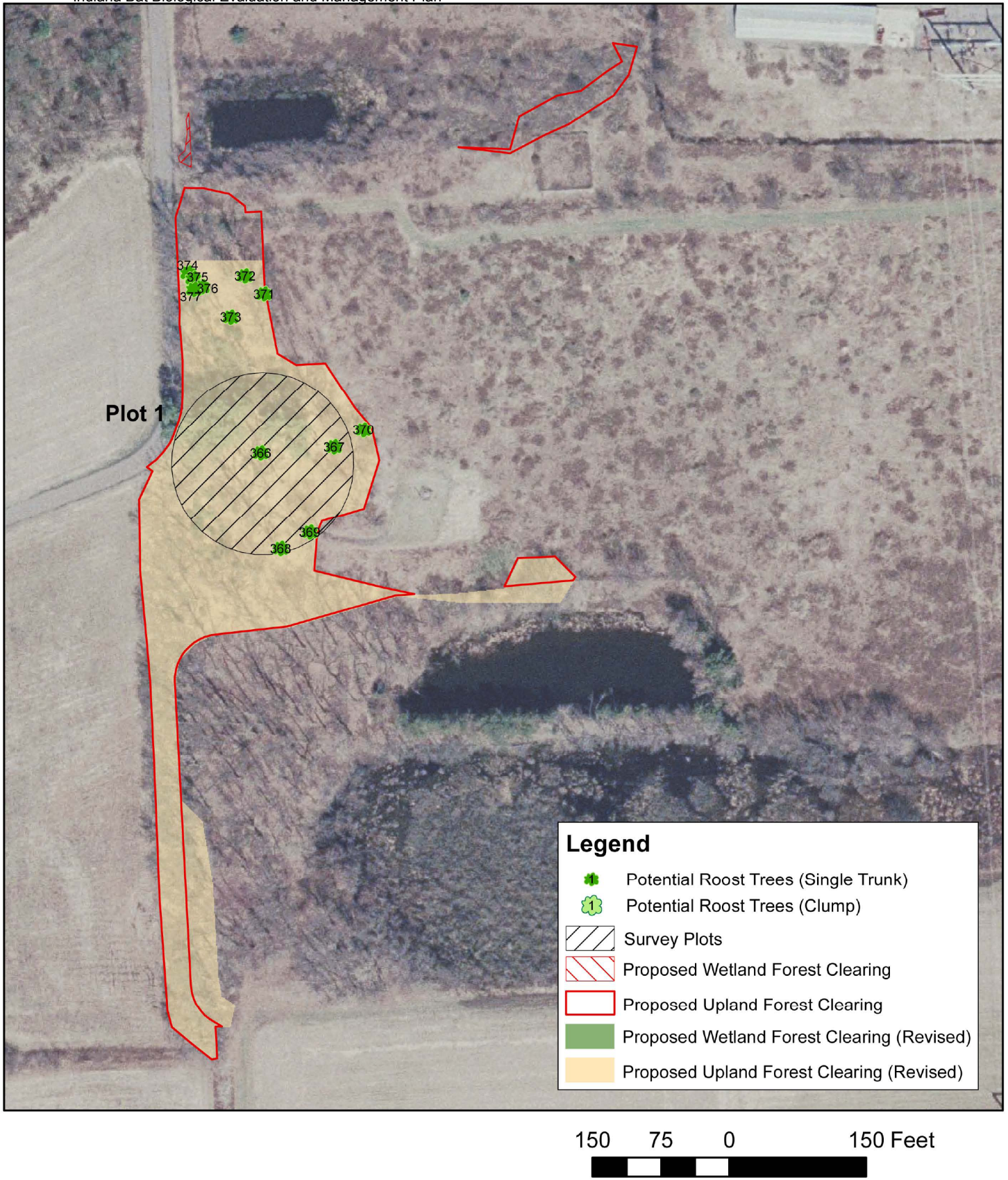
200 100 0 200 Feet

**Figure D-7.**  
**BBNPP Forest Area 10**  
**Potential Roost Tree Locations**



 **NORMANDEAU ASSOCIATES**  
**ENVIRONMENTAL CONSULTANTS**  
 400 Old Reading Pike, Bldg A, Suite 101 Stowe, PA 19464

date: 12/13/10 rev. date: 01/09/11, 09/15/11  
 prepared by: s.sherman prepared for: c. roche  
 project: 22474.000 file name: Area10\_PFOandUP\_AppendixFig\_Rev



**Figure D-8.**  
 BBNPP Forest Area 11  
 Potential Roost Tree Locations



**NORMANDEAU ASSOCIATES**  
 ENVIRONMENTAL CONSULTANTS  
 400 Old Reading Pike, Bldg A, Suite 101 Stowe, PA 19464

date: 11/29/10  
 prepared by: s.sherman  
 project: 22474.000

rev. date: 01/09/11, 09/14/11  
 prepared for: c. roche  
 file name: Area11\_PFOandUP\_AppendixFig\_Rev



**Figure D-9.**  
**BBNPP Forest Area 12**  
**Potential Roost Tree Locations**

**NORMANDEAU ASSOCIATES**  
**ENVIRONMENTAL CONSULTANTS**  
 400 Old Reading Pike, Bldg A, Suite 101 Stowe, PA 19464

date: 12/13/10  
 prepared by: s.sherman  
 project: 22474.000

rev. date: 01/09/11, 09/14/11  
 prepared for: c.roche  
 file name: Area12\_PFOandUP\_AppendixFig\_Rev