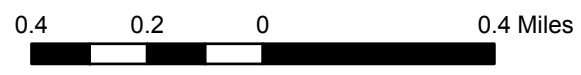



**Legend**

- 1000 ft Forest Buffer
- BBNPP Project Boundary
- Isolated Forest Fragments
- Proposed Forest Clearing
- All Forest



**Figure 3.**  
**BBNPP**  
**Isolated Forest Fragments,**  
**Scenario 1**

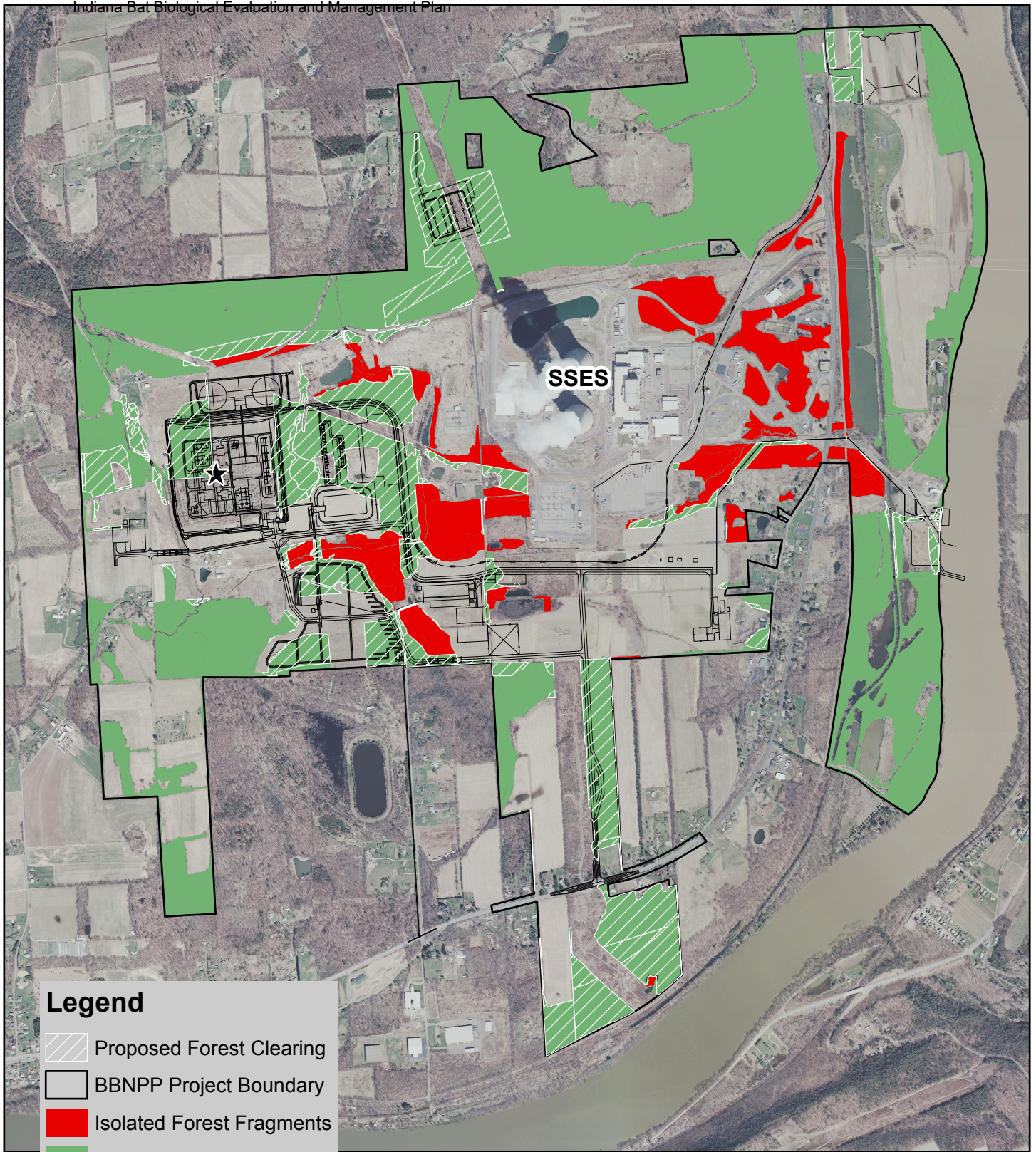


 **NORMANDEAU ASSOCIATES**  
ENVIRONMENTAL CONSULTANTS  
400 Old Reading Pike, Bldg A, Suite 101 Stowe, PA 19464



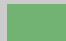
date: 11/07/11  
prepared by: s.sherman  
project: 22474, 22932

rev. date: 07/18/12, 08/17/12, 08/29/12  
prepared for: c. roche  
file name: Figure3\_Isolated\_Forest\_Scen1





**Legend**

-  Proposed Forest Clearing
-  BBNPP Project Boundary
-  Isolated Forest Fragments
-  All Forest

0.4 0.2 0 0.4 Miles

**Figure 4.**  
**BBNPP**  
**Isolated Forests Fragments,**  
**Scenario 2**



**NORMANDEAU ASSOCIATES**  
**ENVIRONMENTAL CONSULTANTS**  
400 Old Reading Pike, Bldg A, Suite 101 Stowe, PA 19464

date: 11/07/11  
prepared by: s.sherman  
project: 22474, 22932

rev. date: 06/27/12, 08/17/12, 08/29/12  
prepared for: c. roche  
file name: Figure4\_Isolated\_Forest\_Scen2