

Figure 2.5-142 — {Geotechnical Site Cross Section B-B}

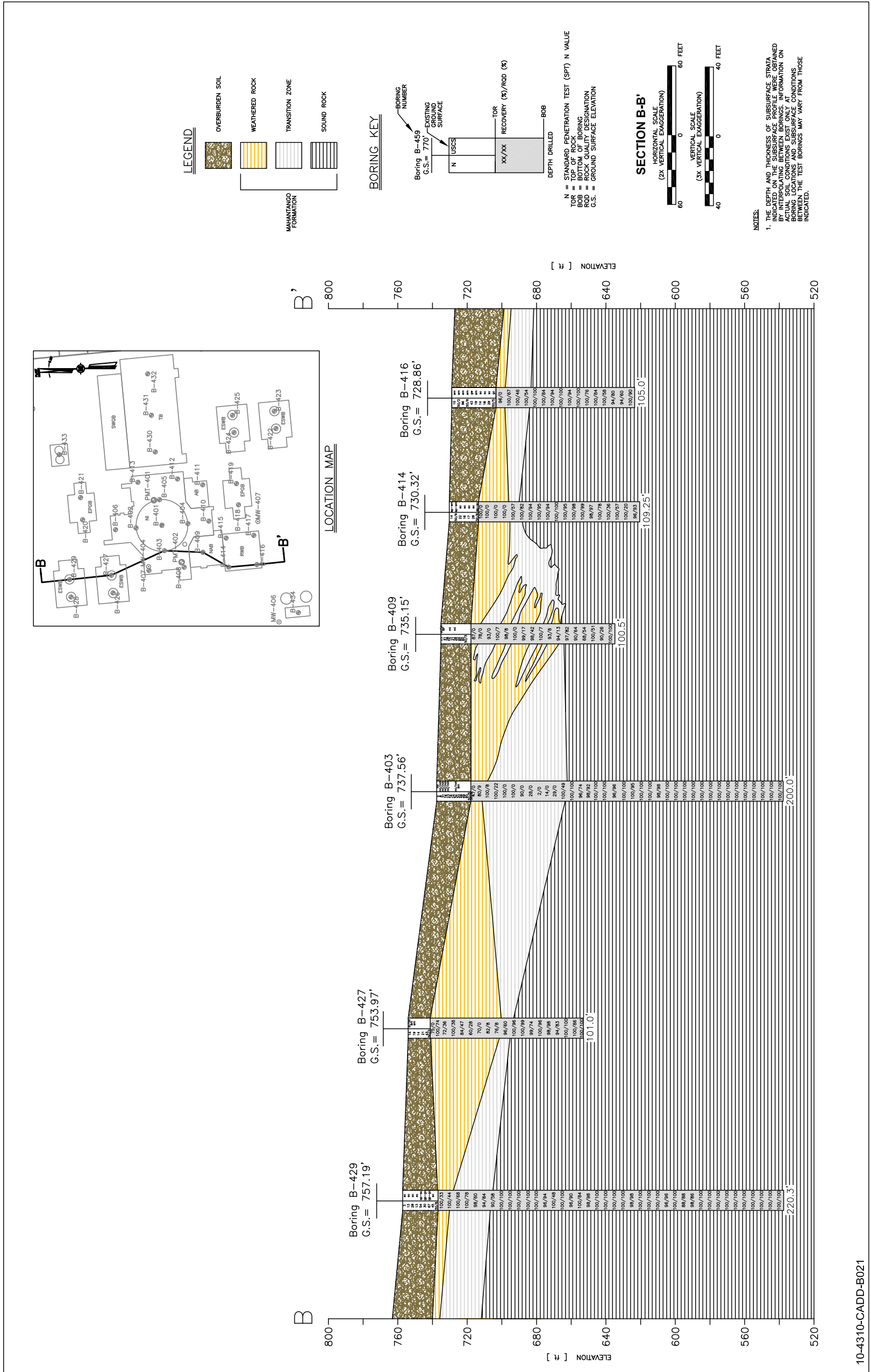
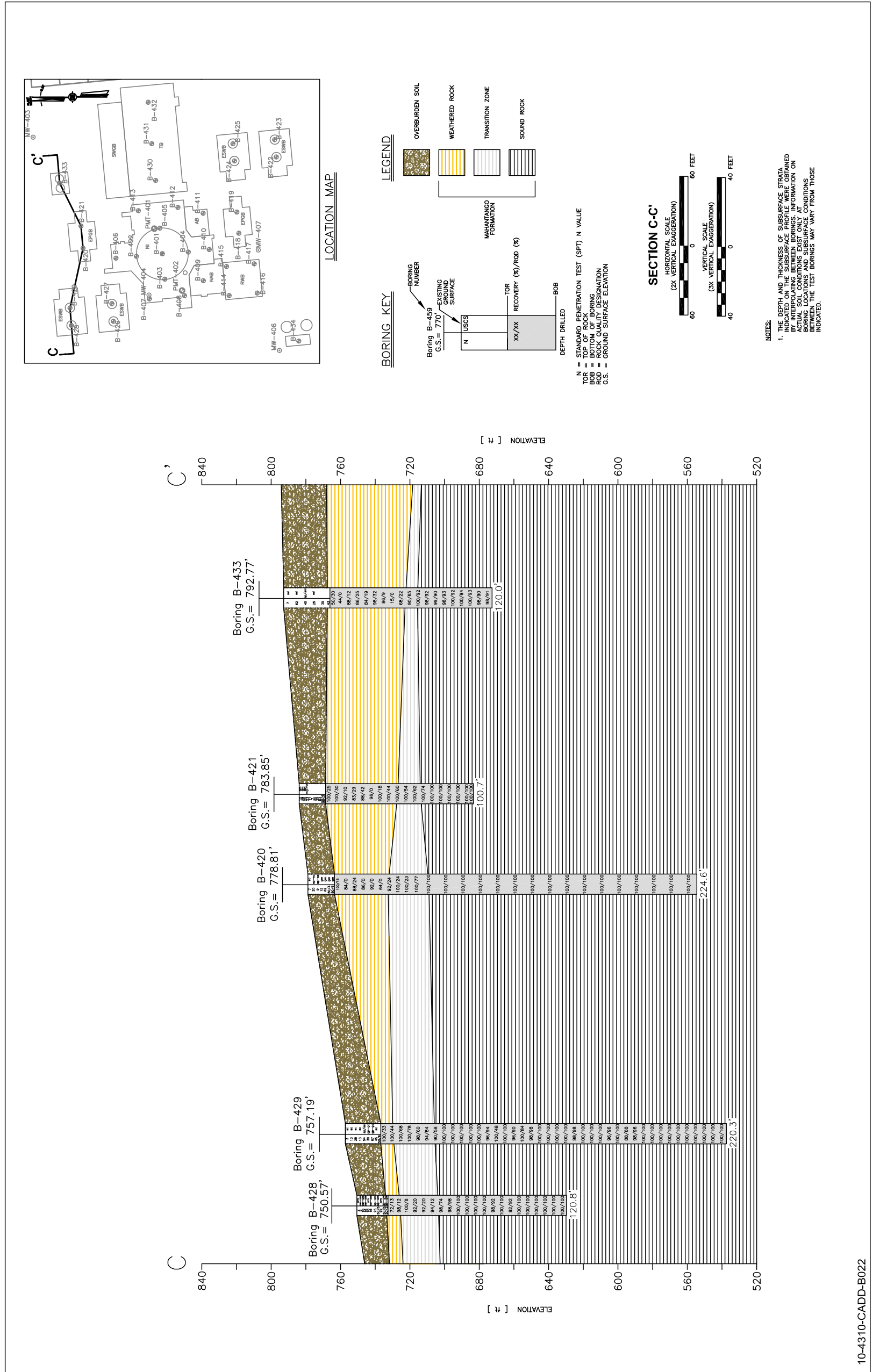
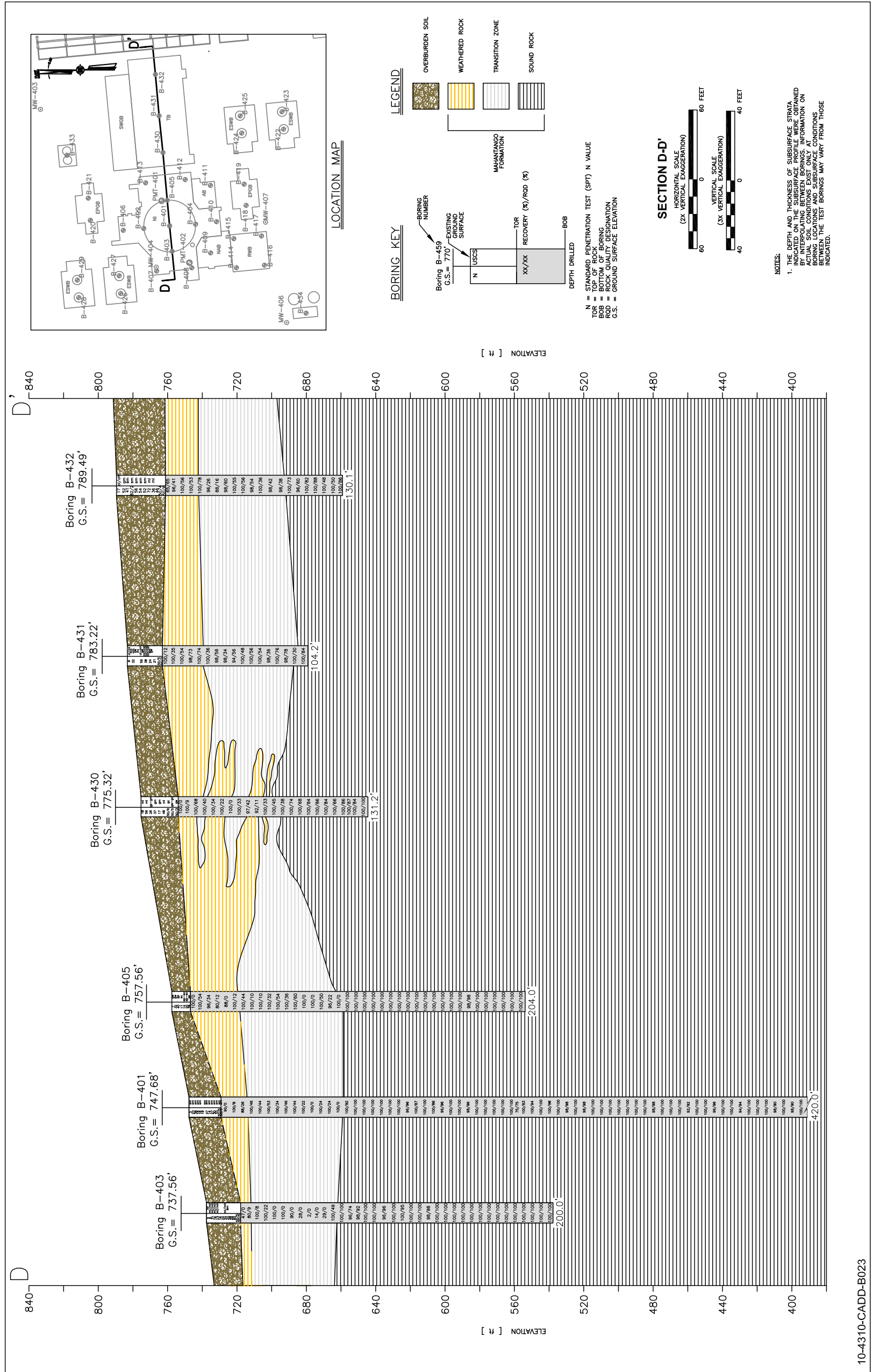


Figure 2.5-143 — {Geotechnical Site Cross Section C-C}



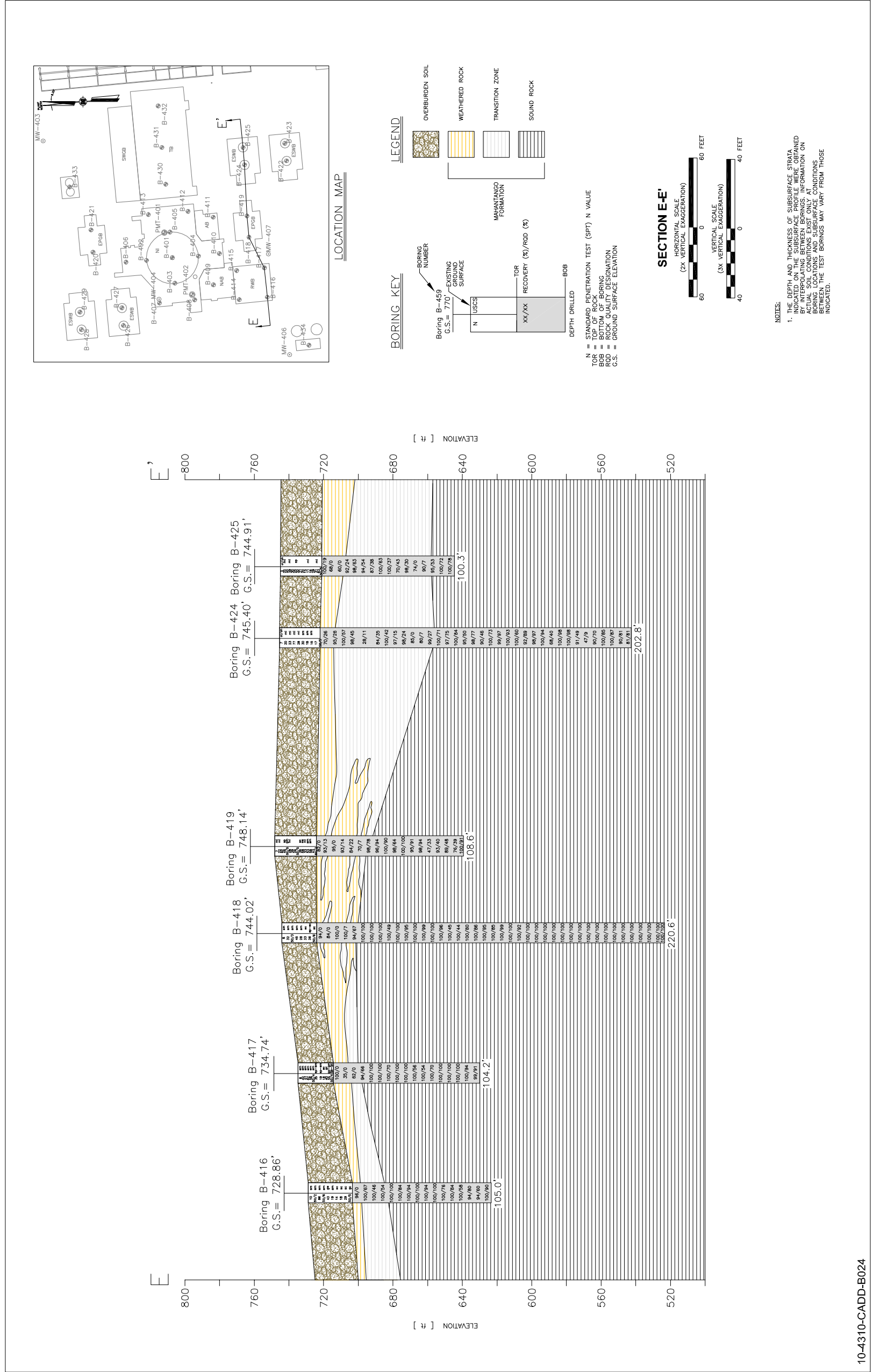
10-4310-CADD-B022

Figure 2.5-144— {Geotechnical Site Cross Section D-D}



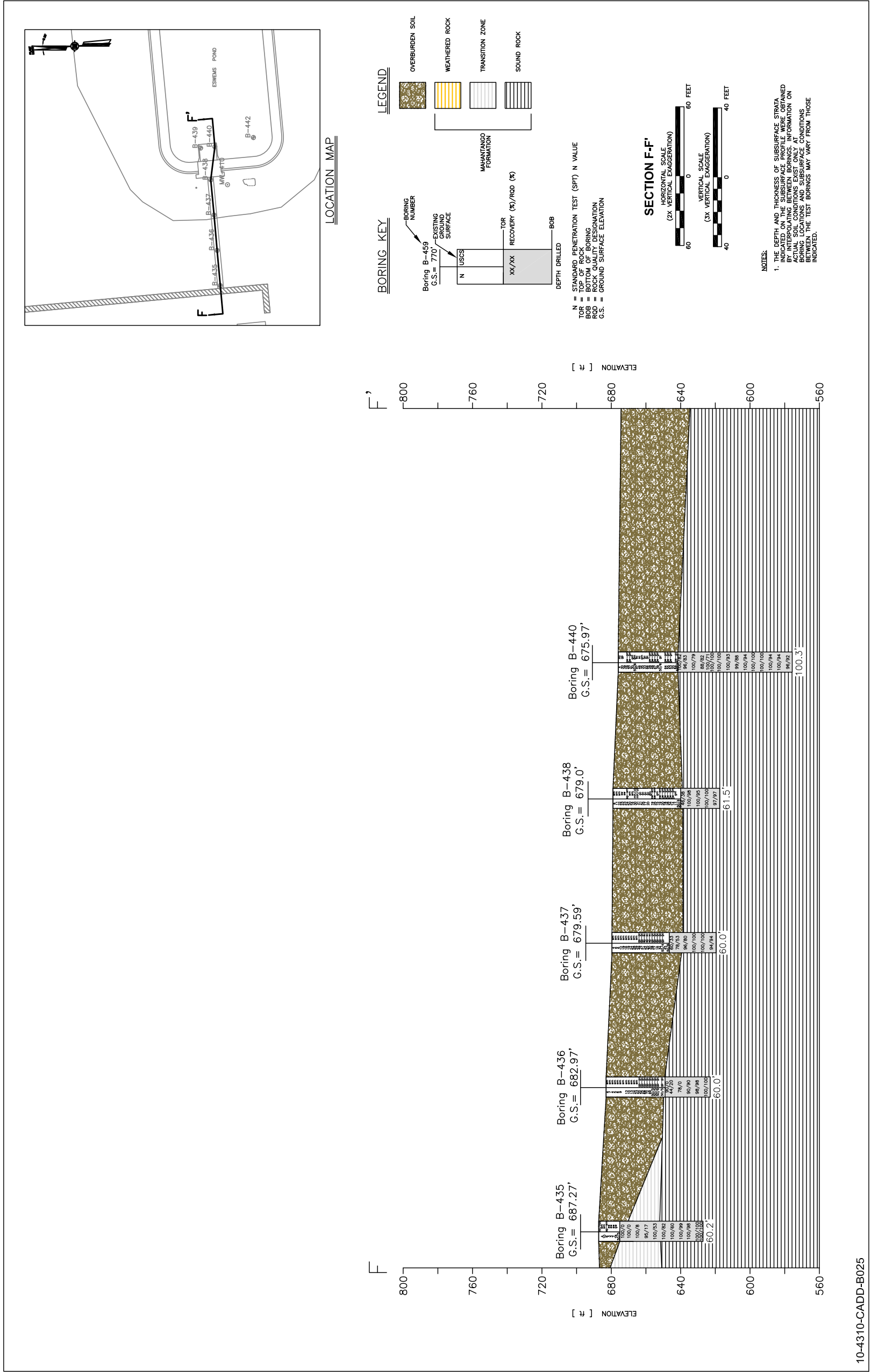
10-4310-CADD-B023

Figure 2.5-145— {Geotechnical Site Cross Section E-E}



10-4310-CADD-B024

Figure 2.5-146— {Geotechnical Site Cross Section F-F}



10-4310-CADD-B025

Figure 2.5-147— {LIDAR Image with Topographic Sections Across the Site Vicinity}

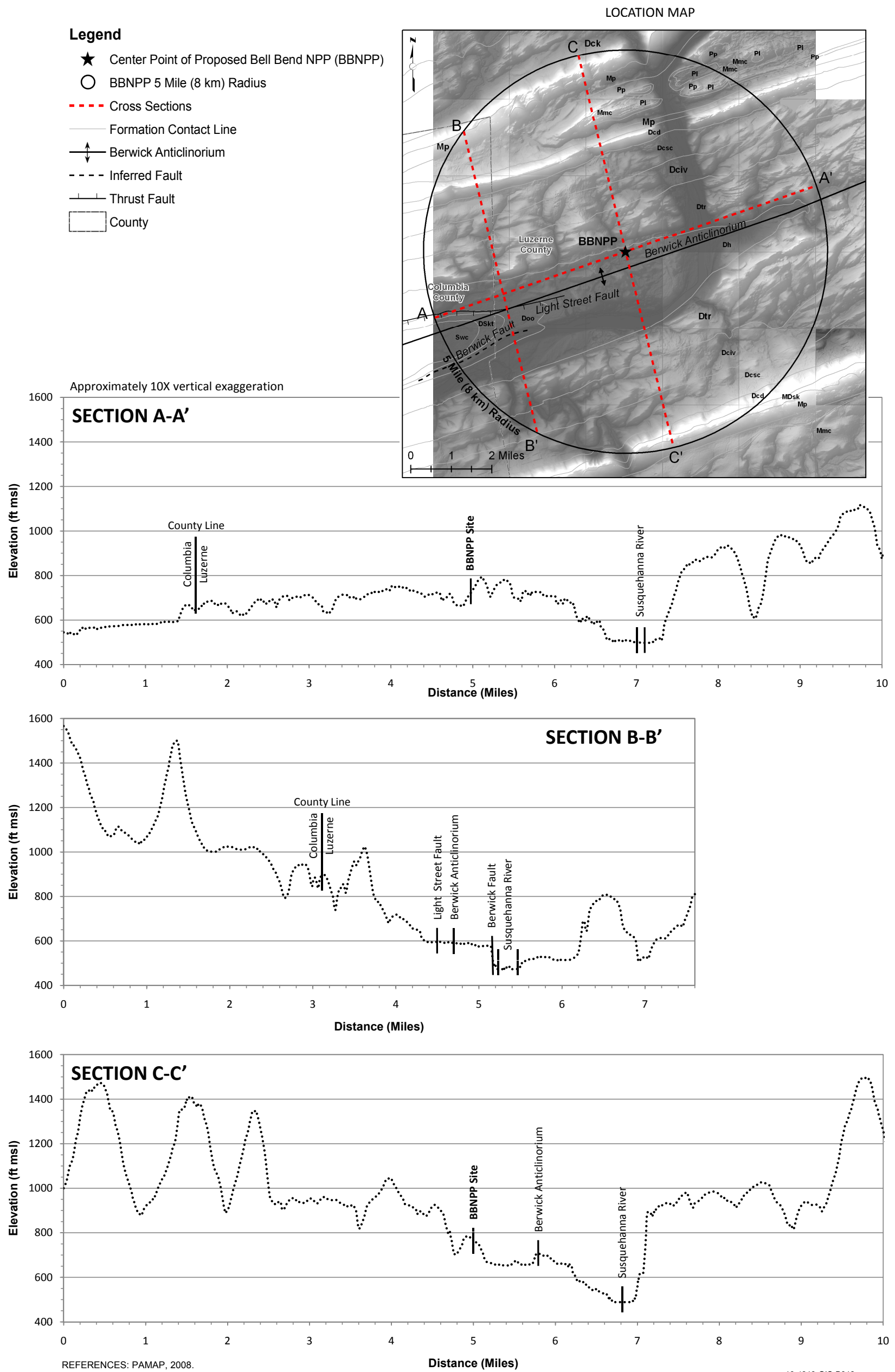


Figure 2.5-148 — {Topographical Map of Site Vicinity 25-mile (40 km) Radius with Waypoints from Field Reconnaissance}

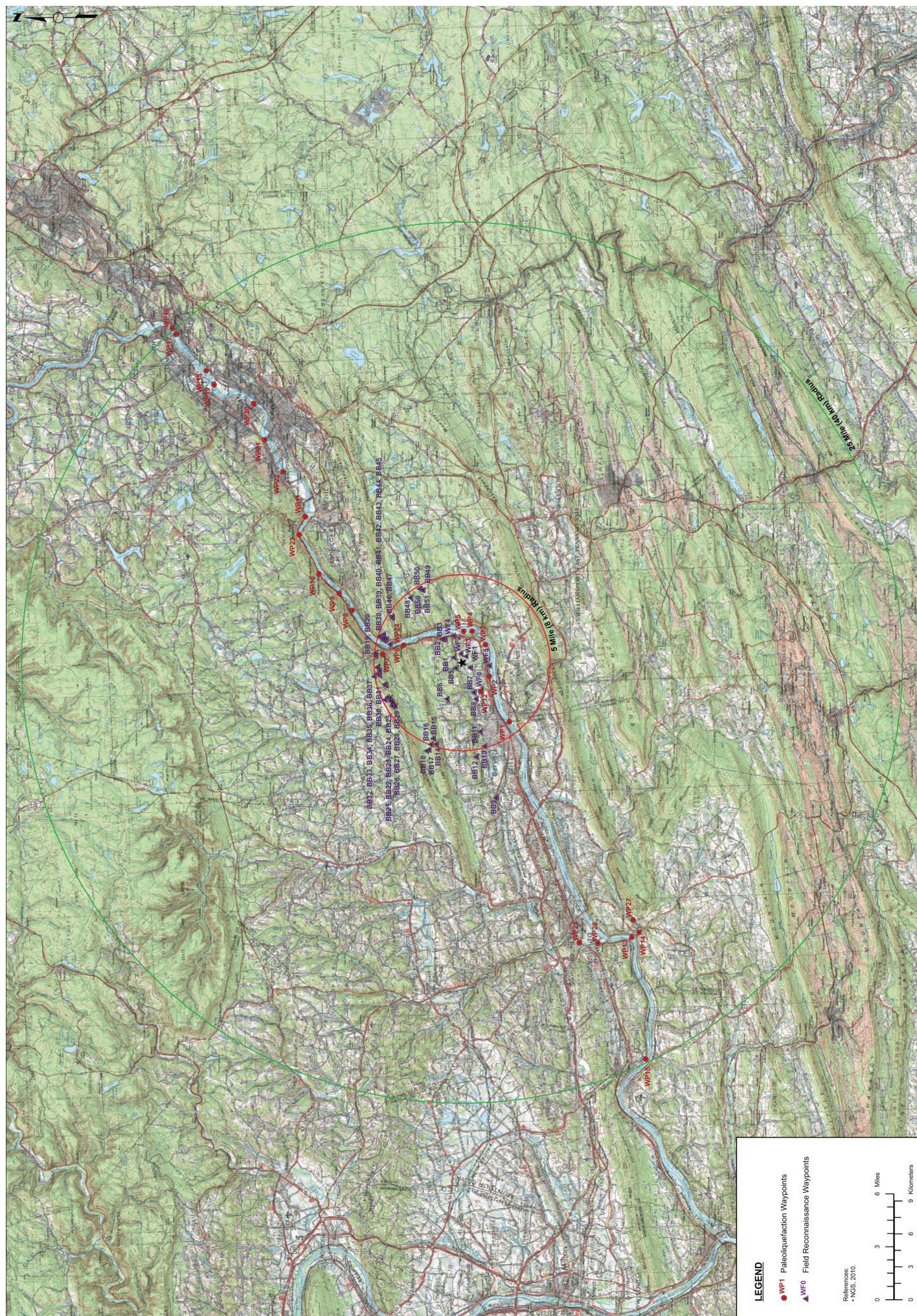
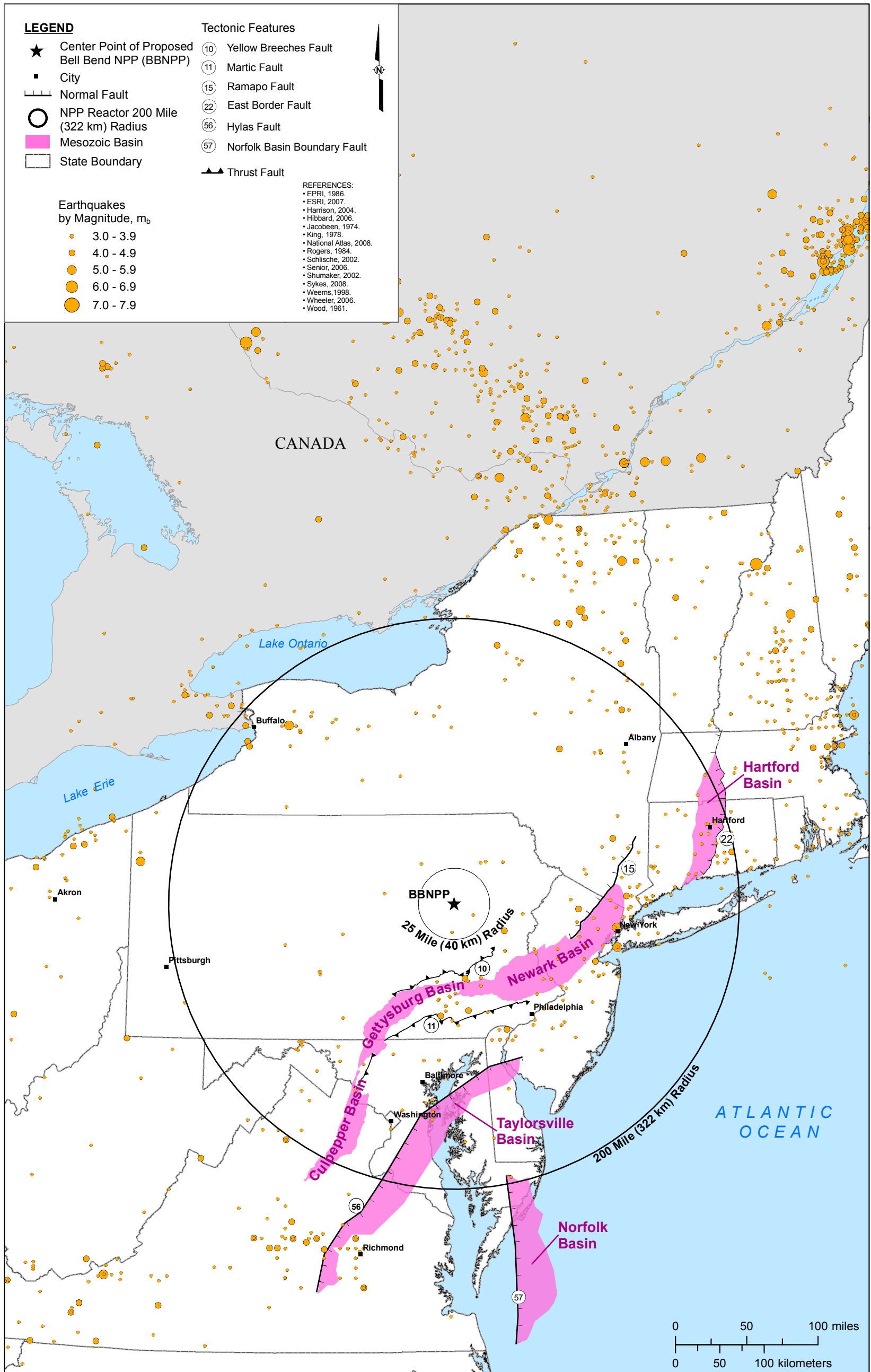


Figure 2.5-149— {Mesozoic Basins and Associated Known Faults}



10-4310-GIS-B028



Figure 2.5-150—{Site Geology in Available LIDAR Data Base map}

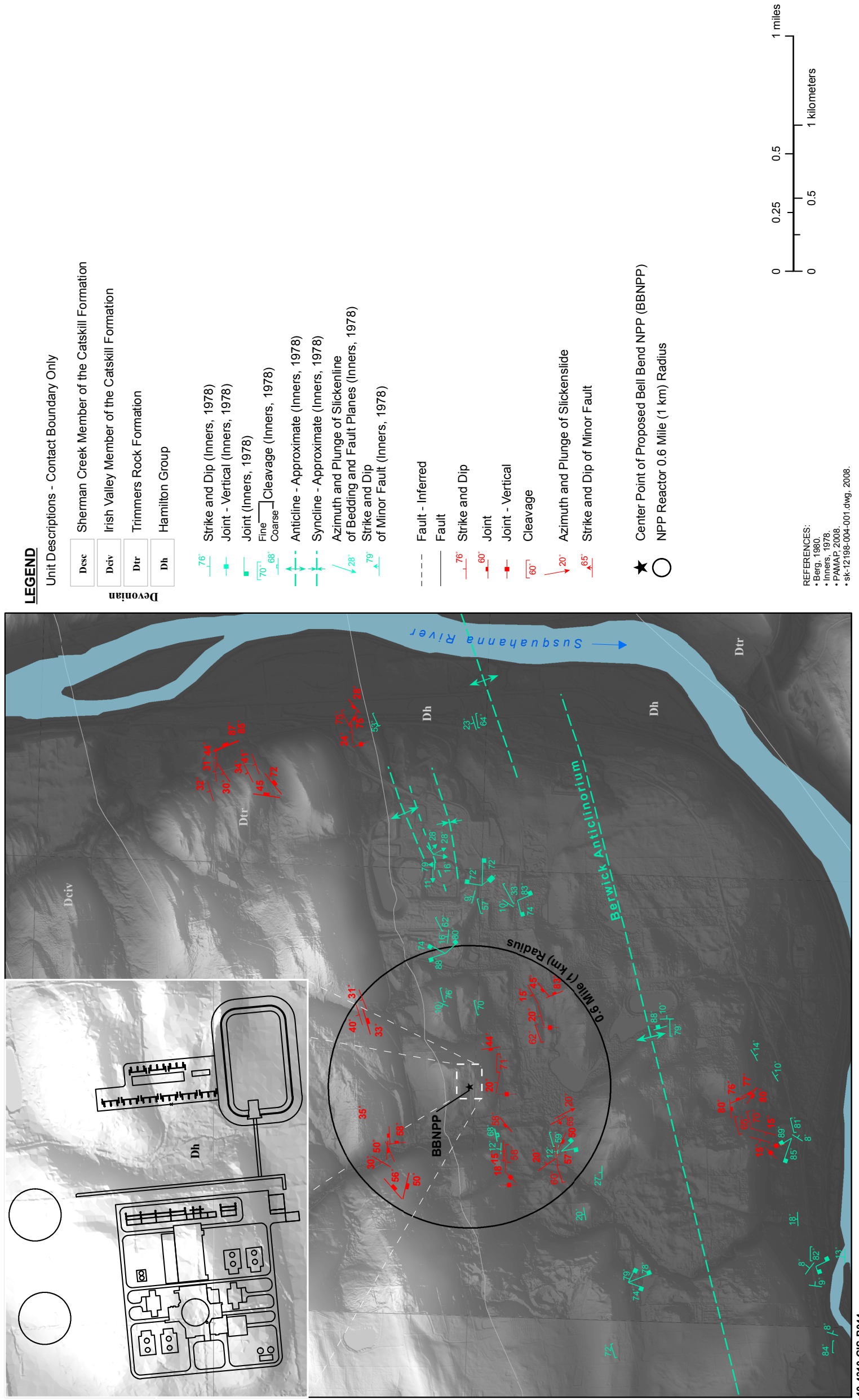
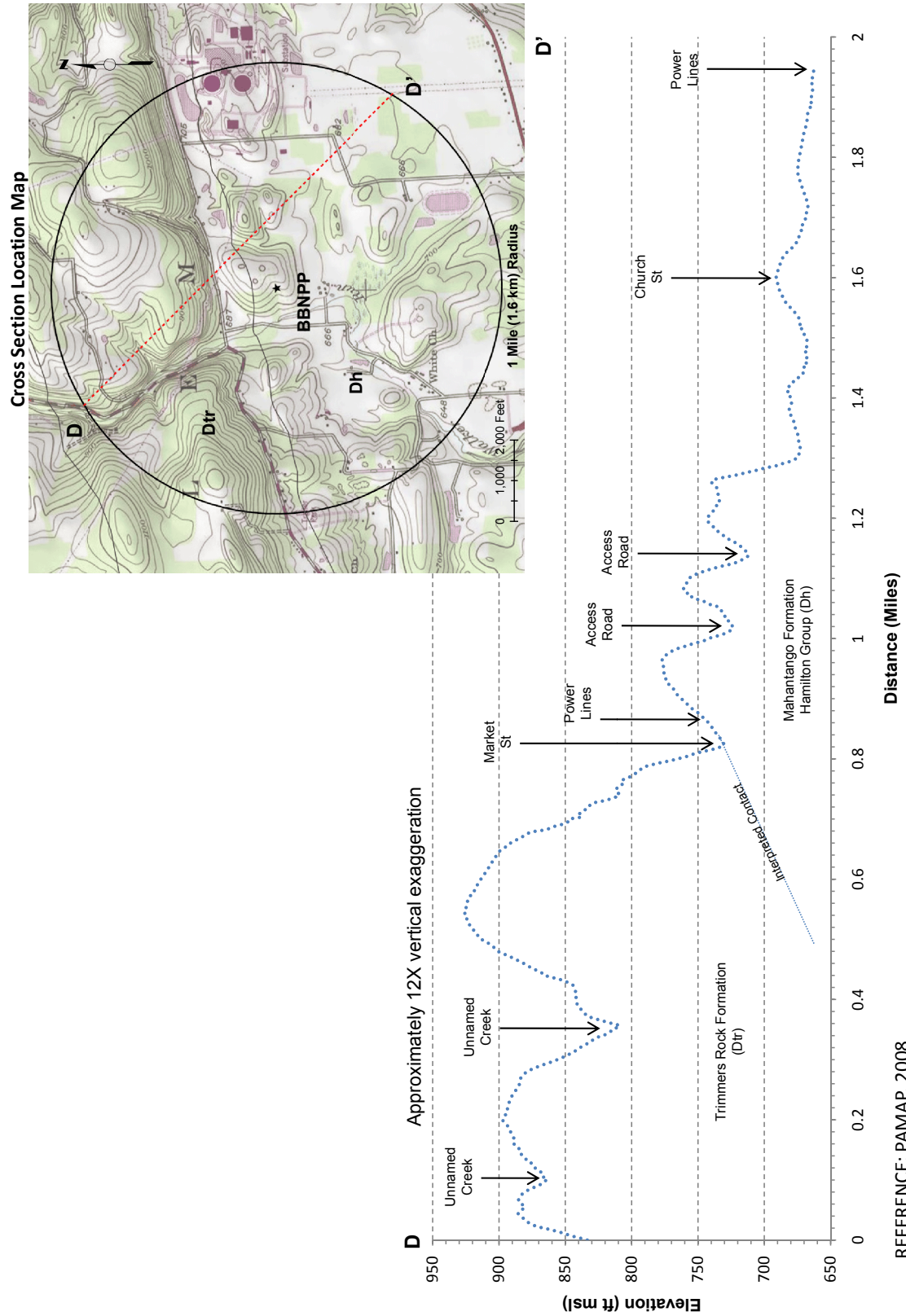
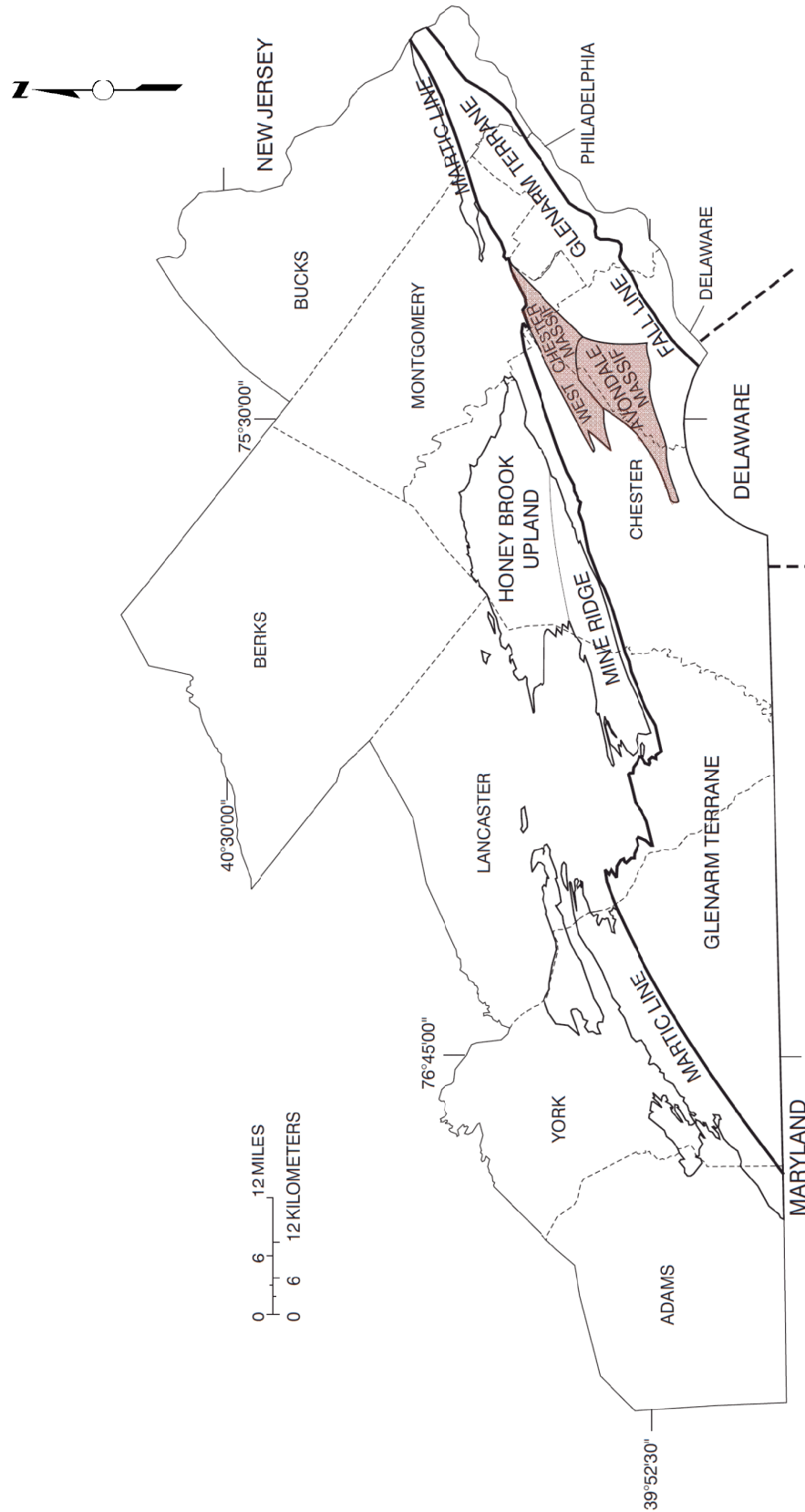


Figure 2.5-151 — {Topographic Section Across the Site Location}



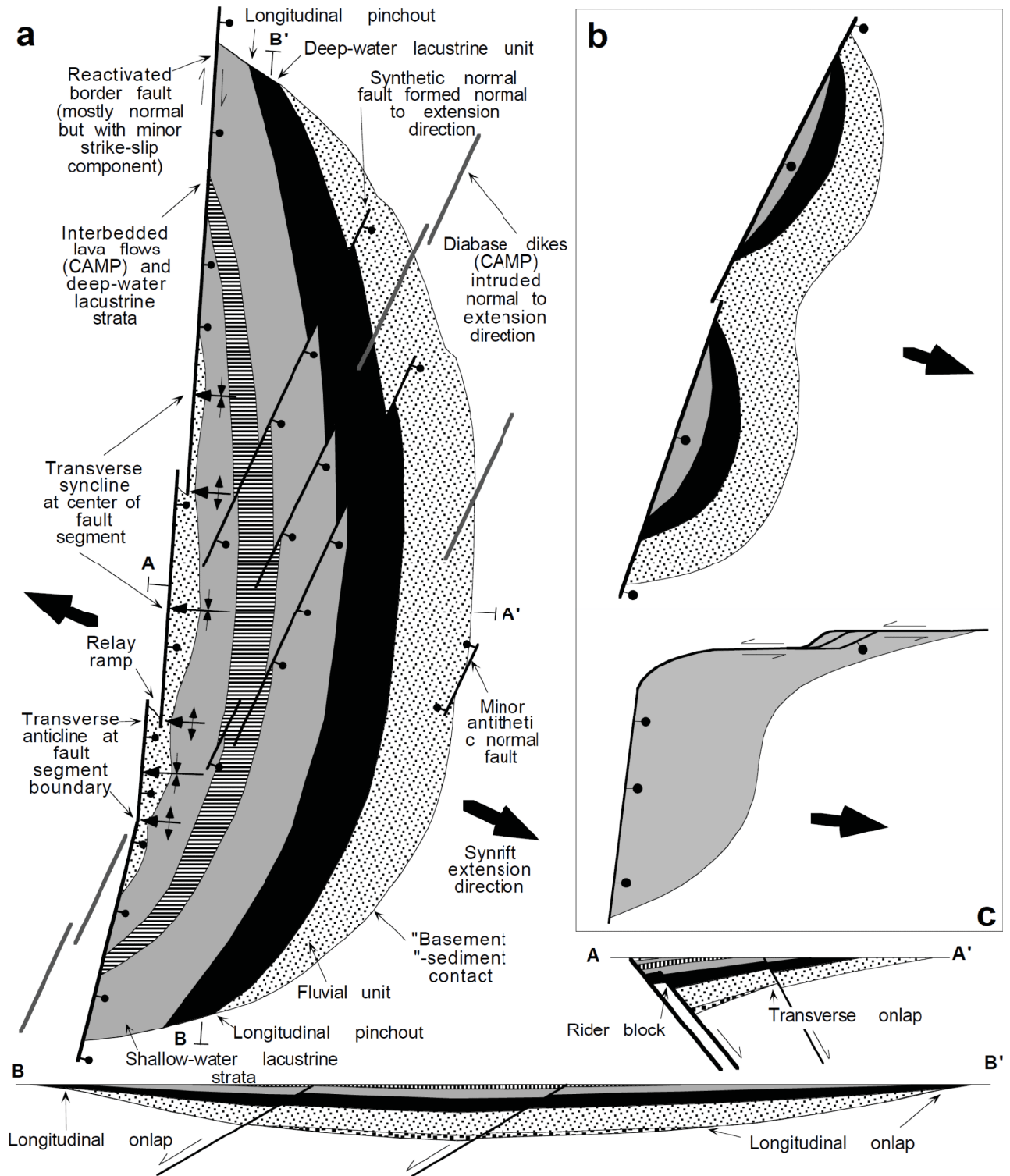
REFERENCE: PAM/AP, 2008  
10-4310-GIS-A092

Figure 2.5-152—{Location Map for West Chester and Avondale Massifs}



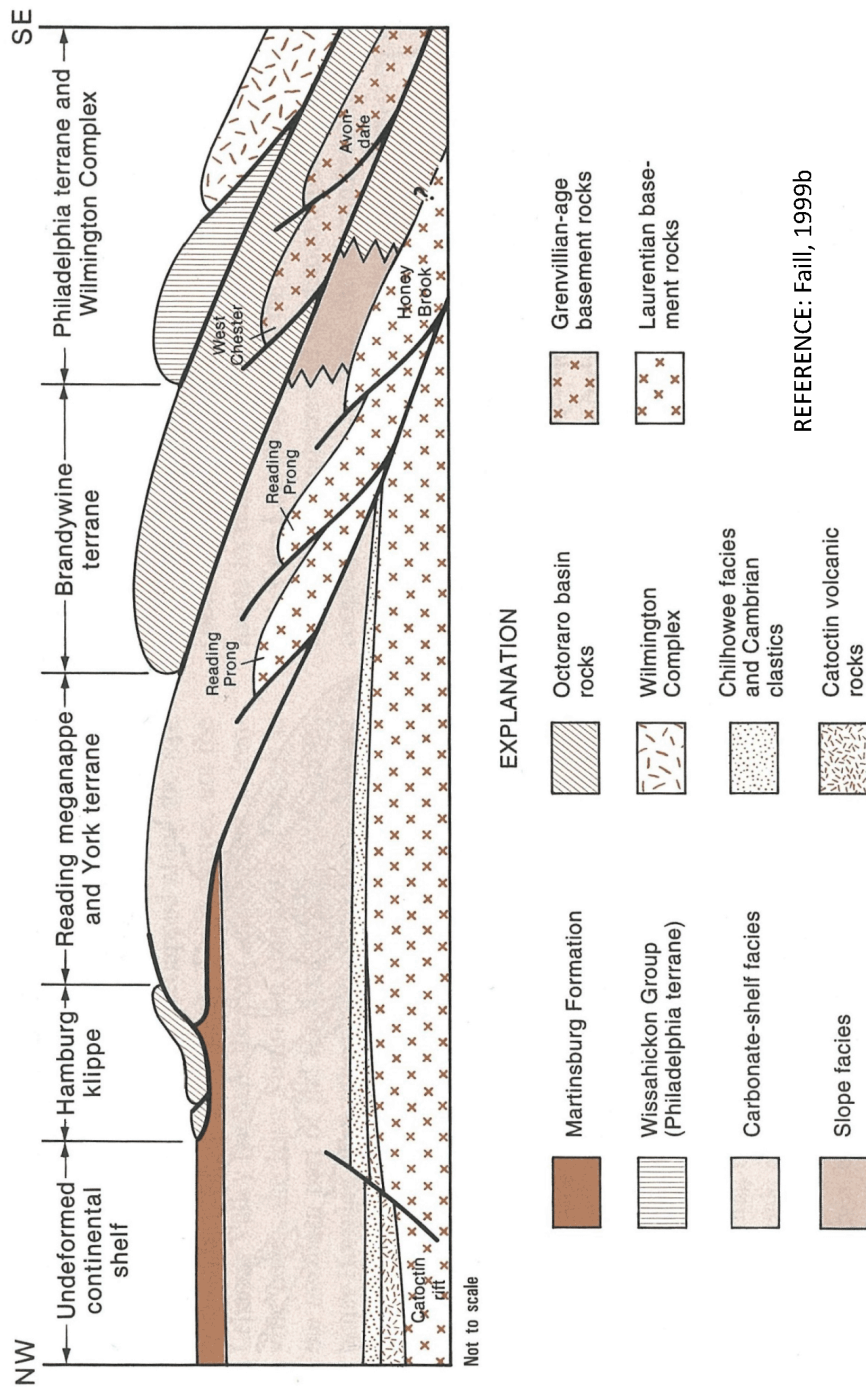
REFERENCE: Low, 2002  
10-4310-GIS-A093

**Figure 2.5-153— {Generic Distribution of Structures and Features of Mesozoic Rift Basins}**

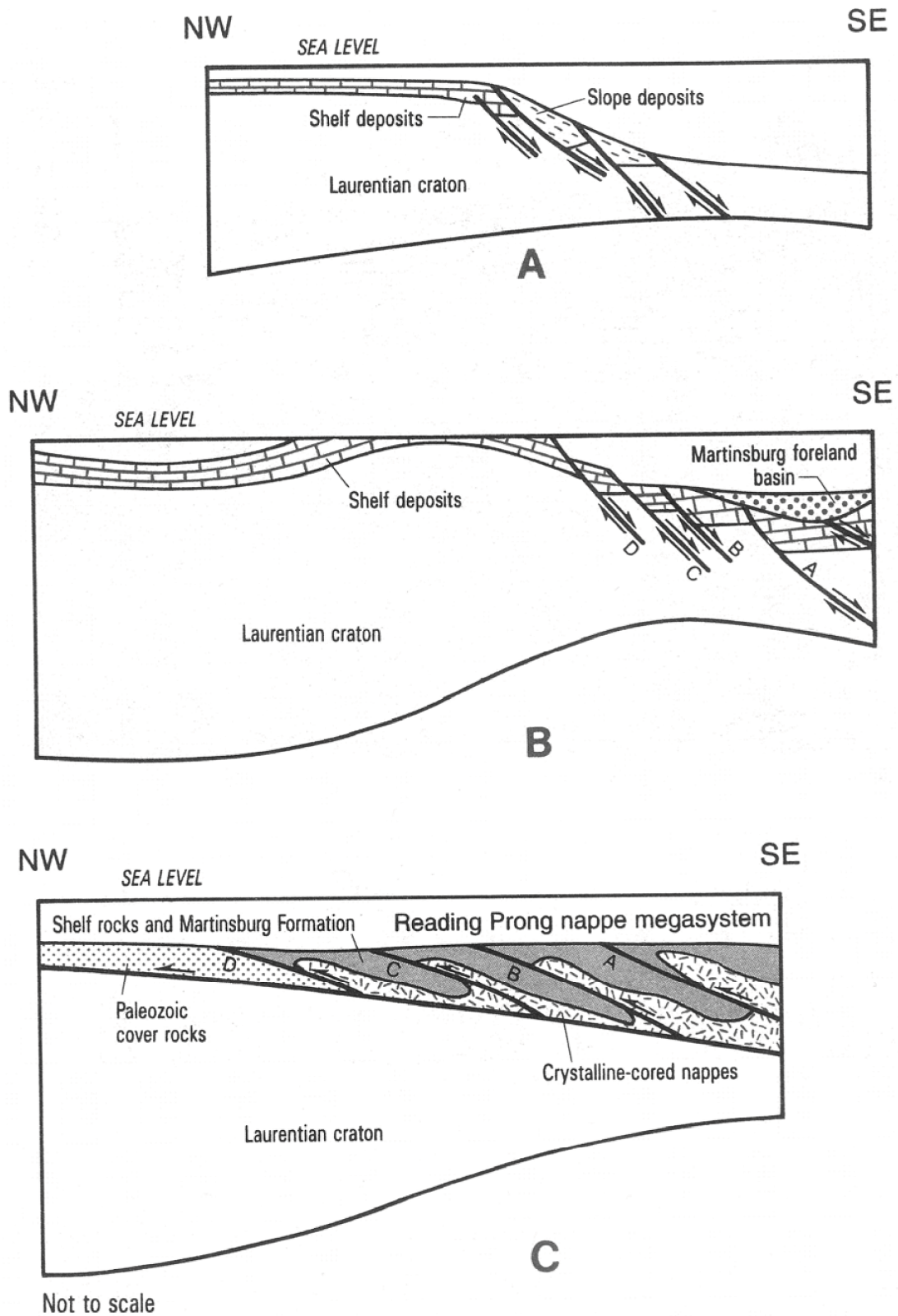


REFERENCE: Schlische, 2002

Figure 2.5-154—{Idealized Cross Section of the Reading Prong, West Chester and Avondale Massifs, and the Philadelphia Terrane}

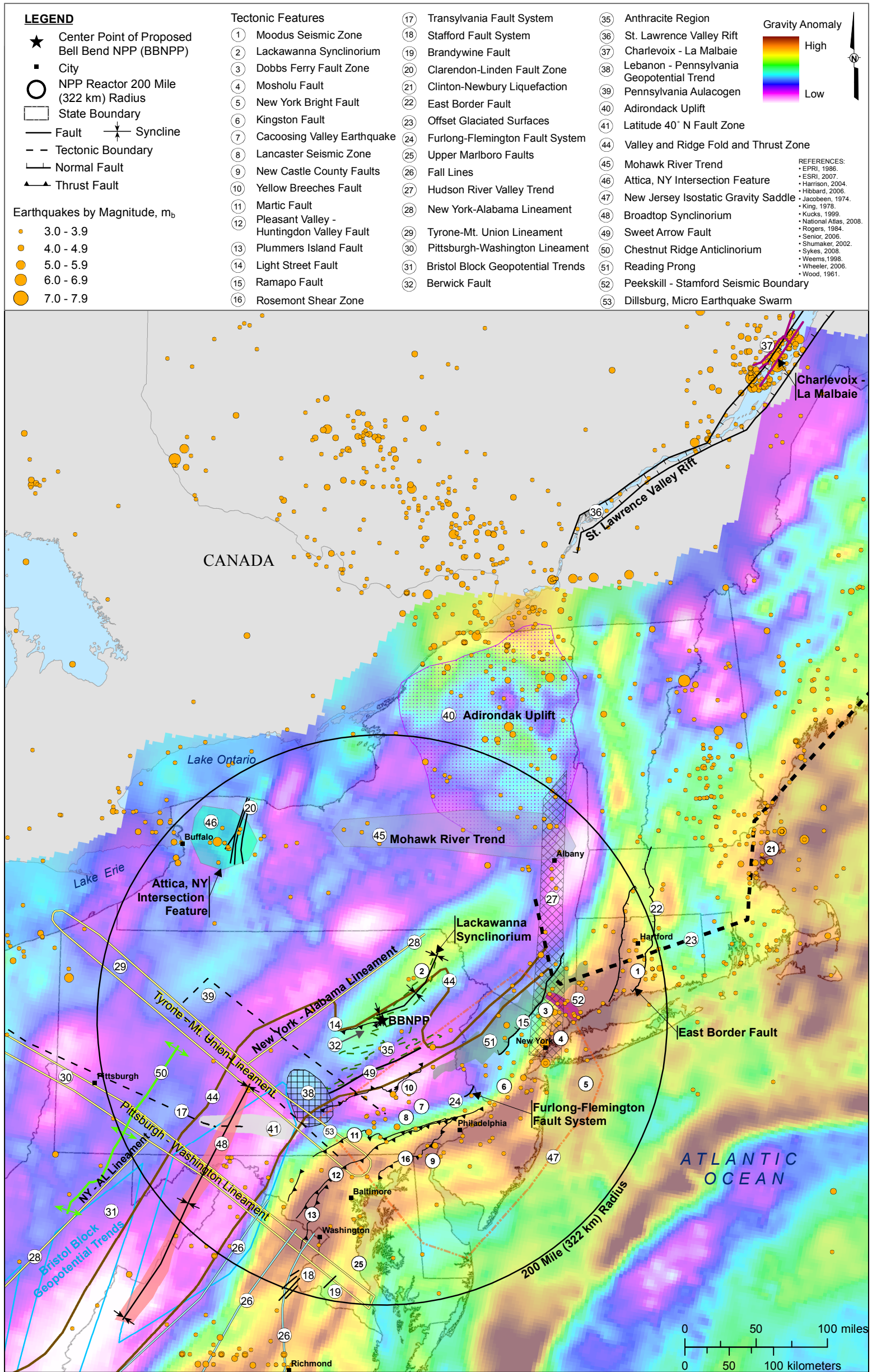


**Figure 2.5-155— {Development of the Reading Prong Nappe Megasystem}**



REFERENCE; Drake, 1999

Figure 2.5-156— {Regional Tectonic Features with Bouguer Gravity Anomaly}



10-4310-GIS-B029