



PROPRIETARY INFORMATION

Figure 1.2-30 – Turbine Building, General Arrangement at Elevation 38300 mm



PROPRIETARY INFORMATION

Figure 1.2-31 – Turbine Building, General Arrangement at Elevation 47200 mm



PROPRIETARY INFORMATION

Figure 1.2-32 – Turbine Building, General Arrangement at Section A-A



PROPRIETARY INFORMATION

Figure 1.2-33 – Turbine Building, General Arrangement at Section B-B



PROPRIETARY INFORMATION

Figure 1.2-34 – UHS Tower Plans



PROPRIETARY INFORMATION

Figure 1.2-35 – UHS Tower Sections



Figure 1.2-36 – RSW Pumphouse and Tunnel Plans and Sections

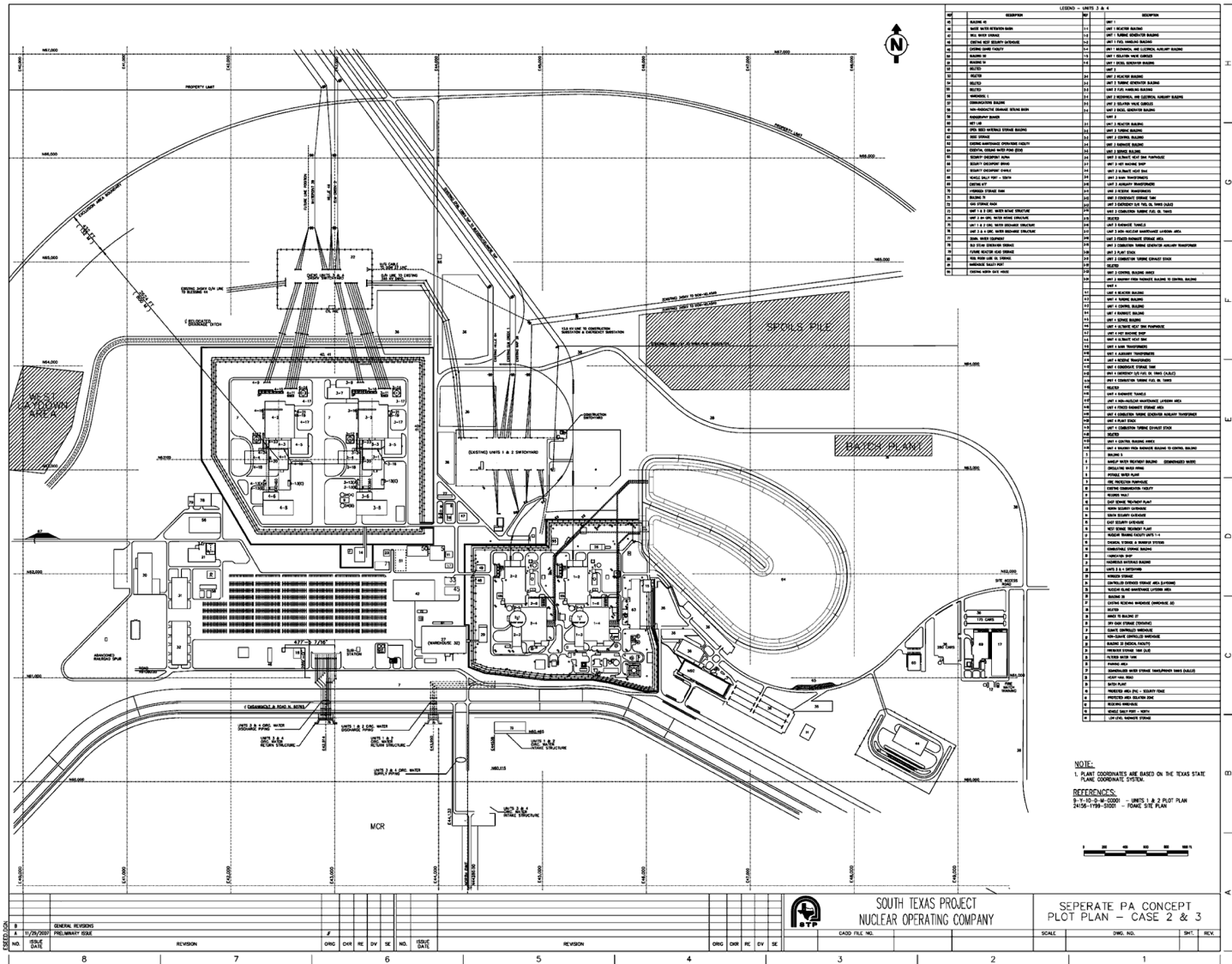


Figure 1.2-37 – Plot Plan

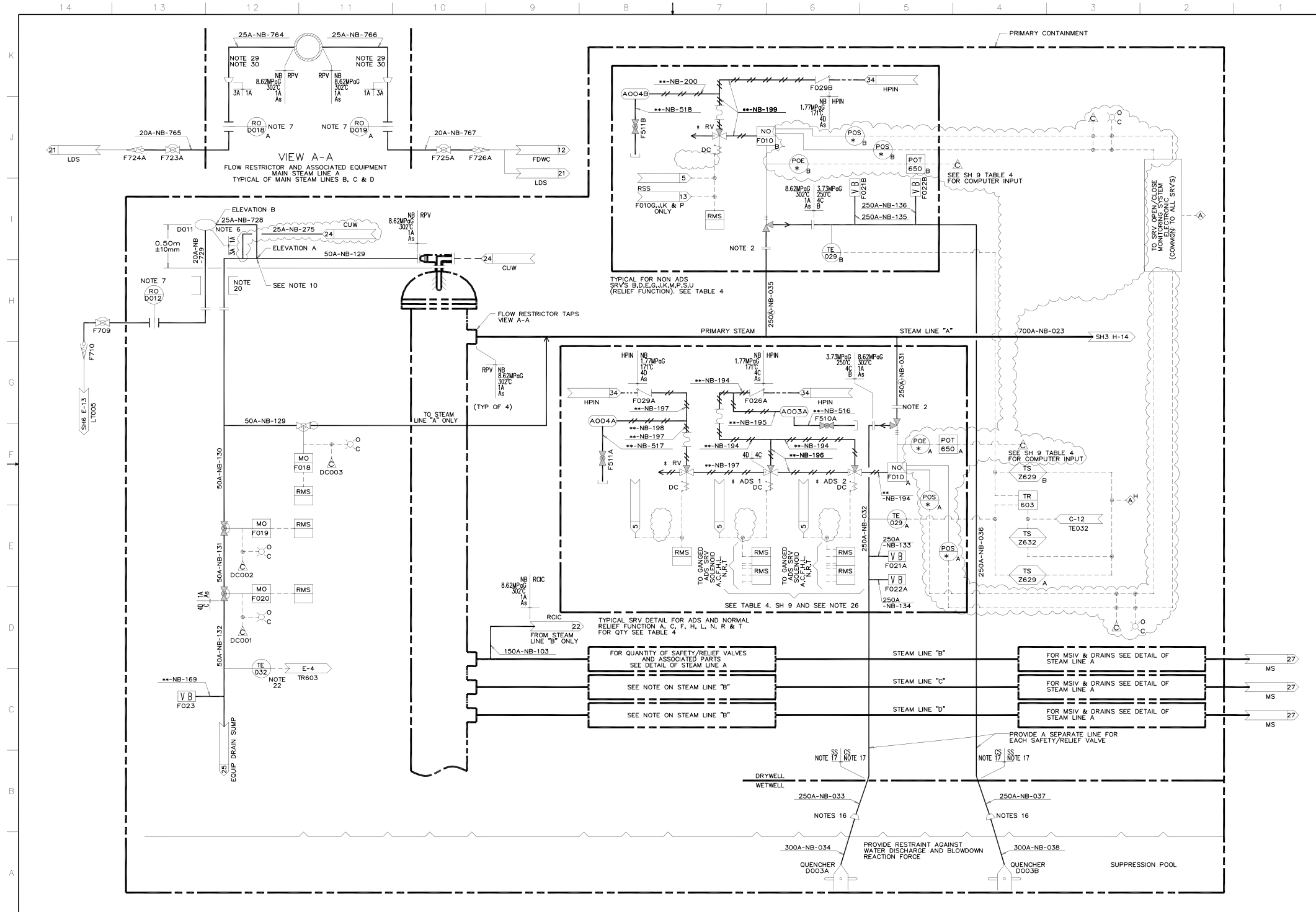


Figure 5.1-3 – Nuclear Boiler System P&ID (Sheet 2 of 11)

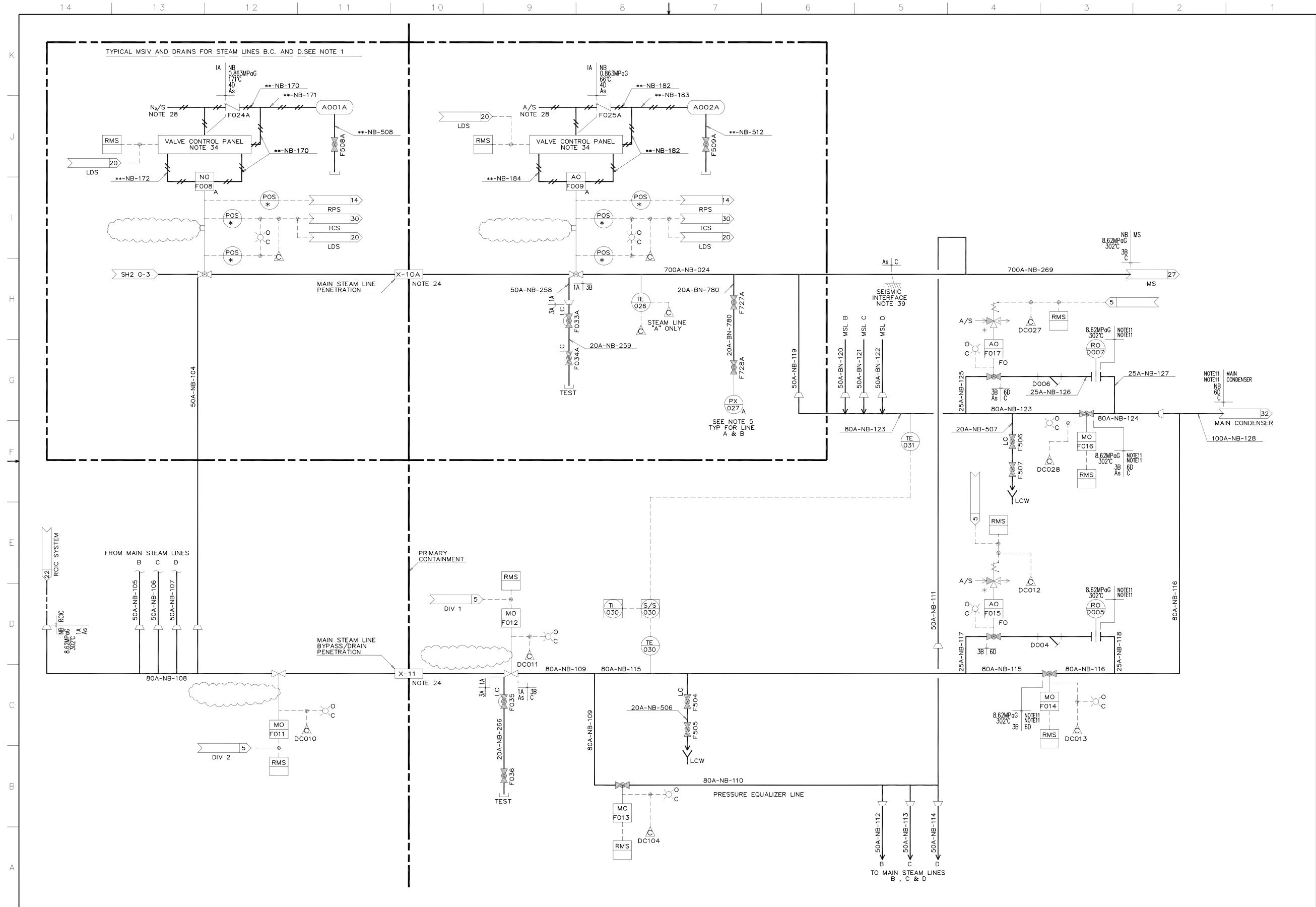


Figure 5.1-3 – Nuclear Boiler System P&ID (Sheet 3 of 11)

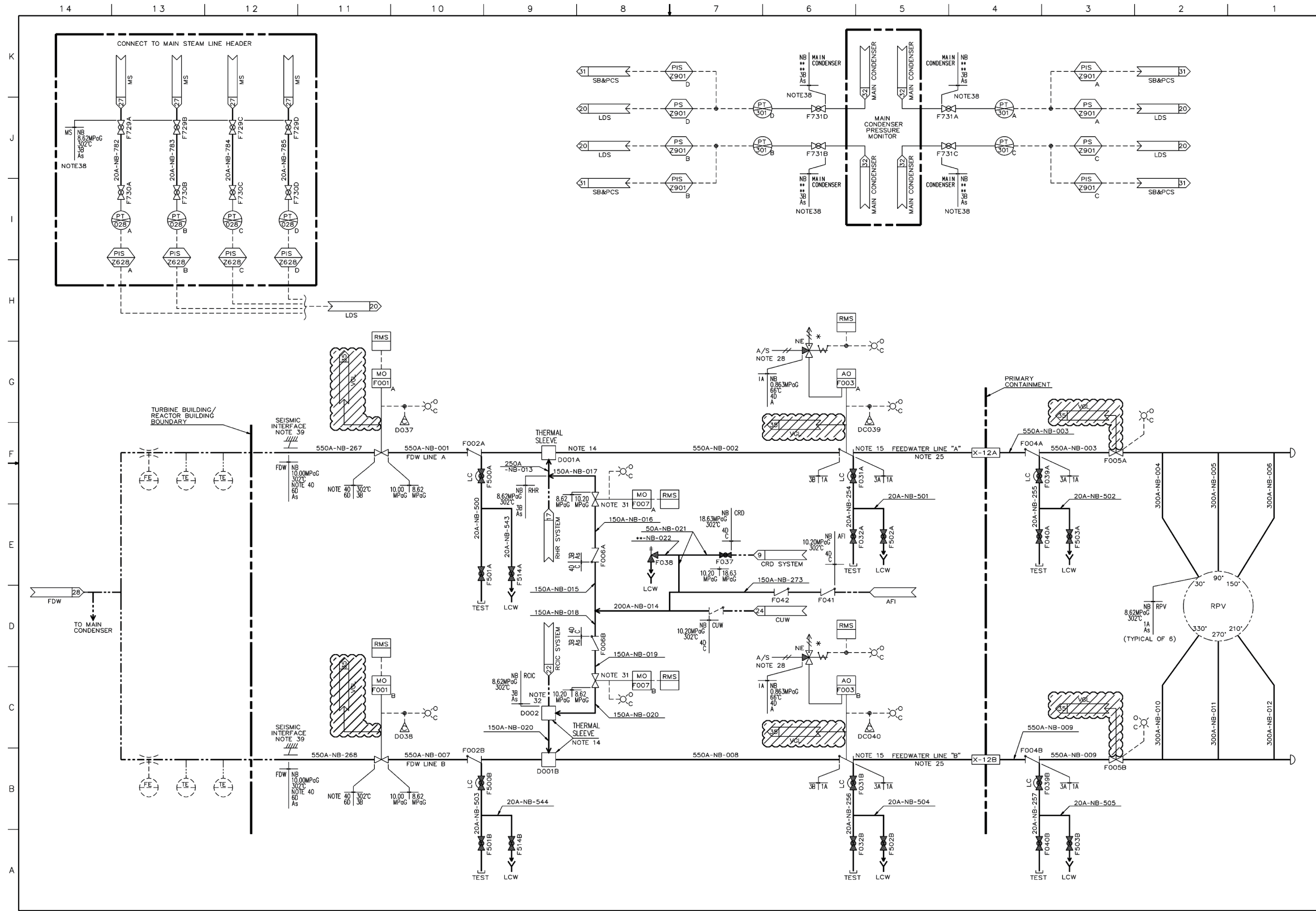
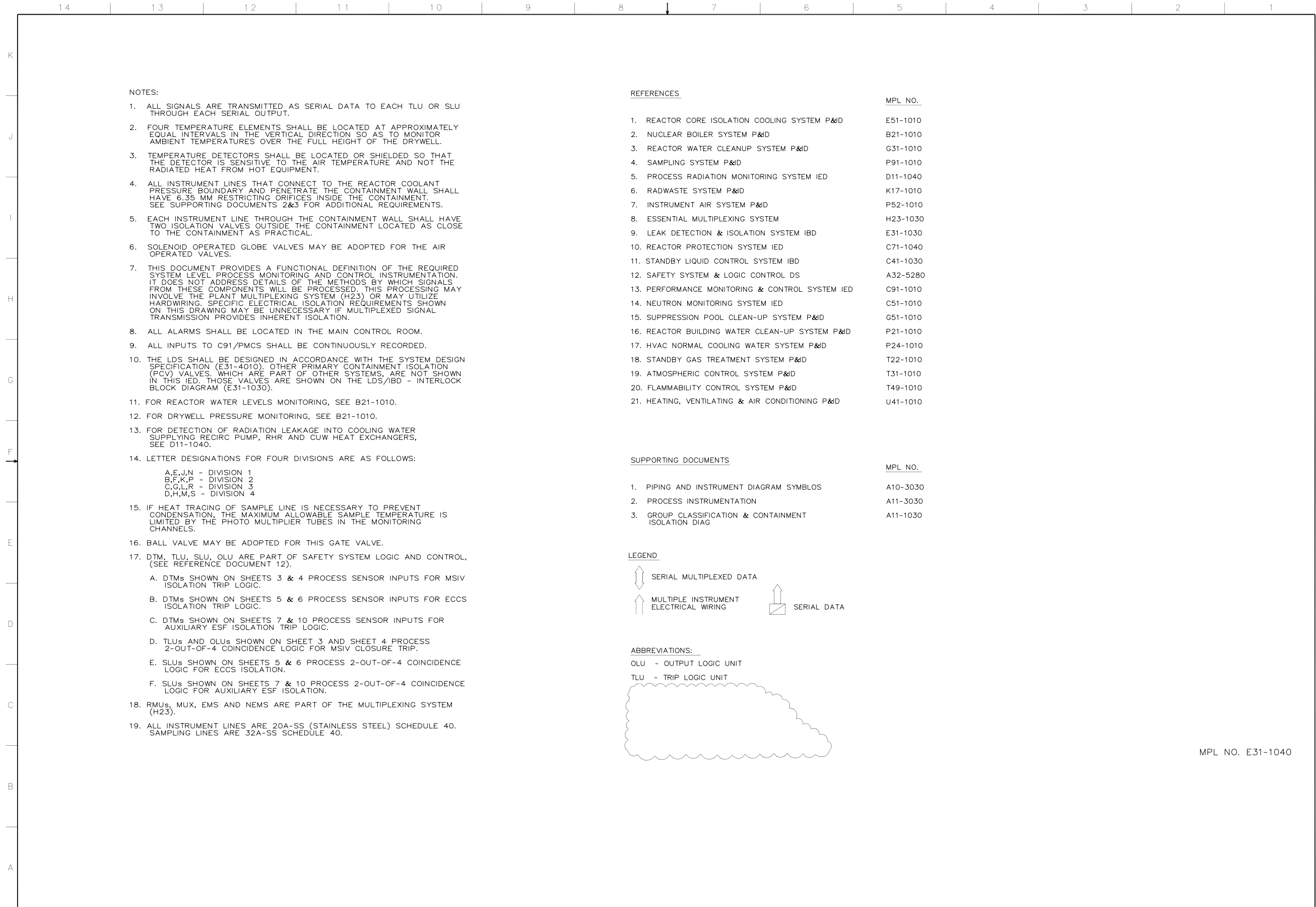


Figure 5.1-3 – Nuclear Boiler System P&ID (Sheet 4 of 11)



MPL NO. E31-1040

Figure 5.2-8 – Leak Detection and Isolation System IED (Sheet 1 of 10)

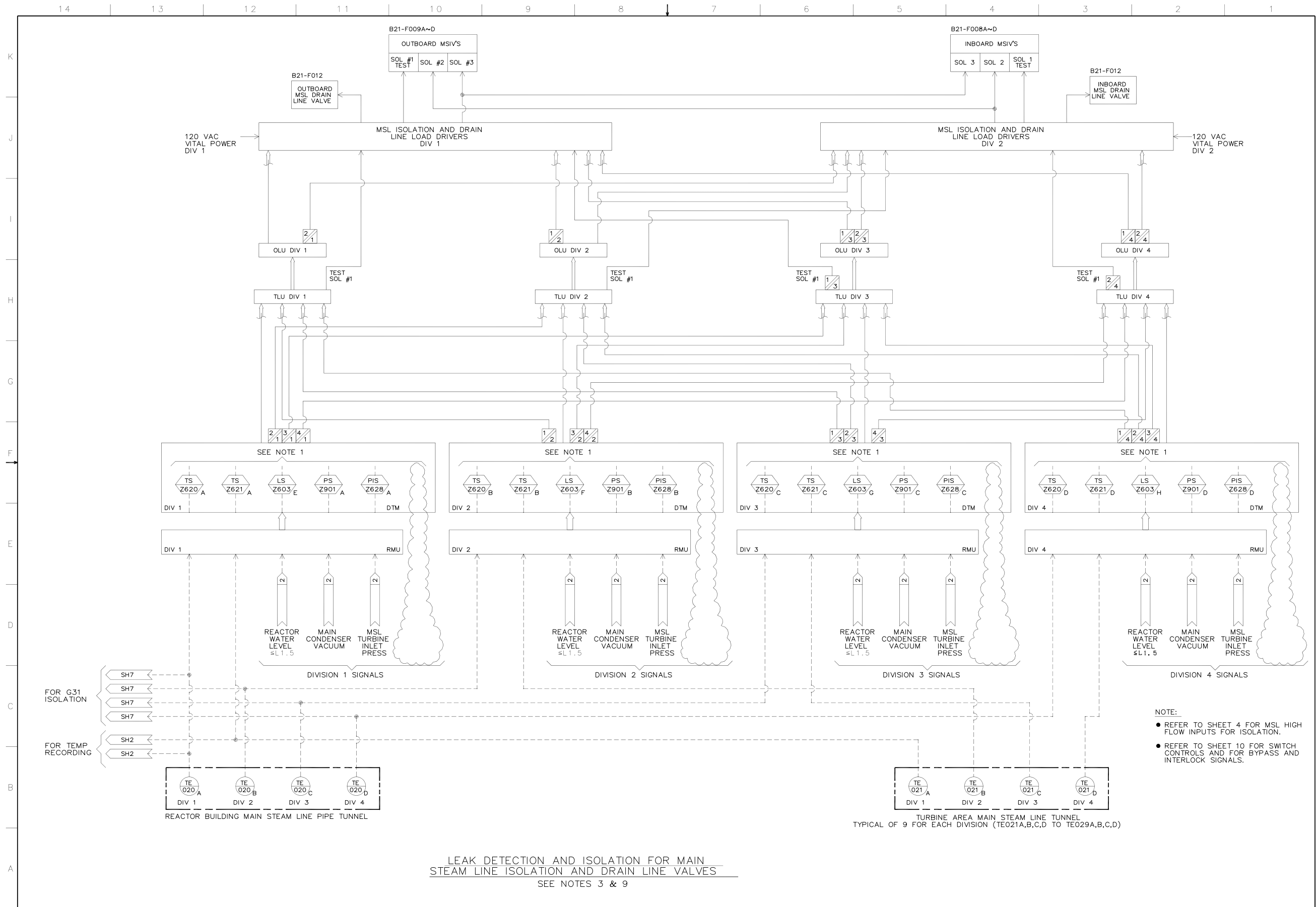


Figure 5.2-8 – Leak Detection and Isolation System IED (Sheet 3 of 10)

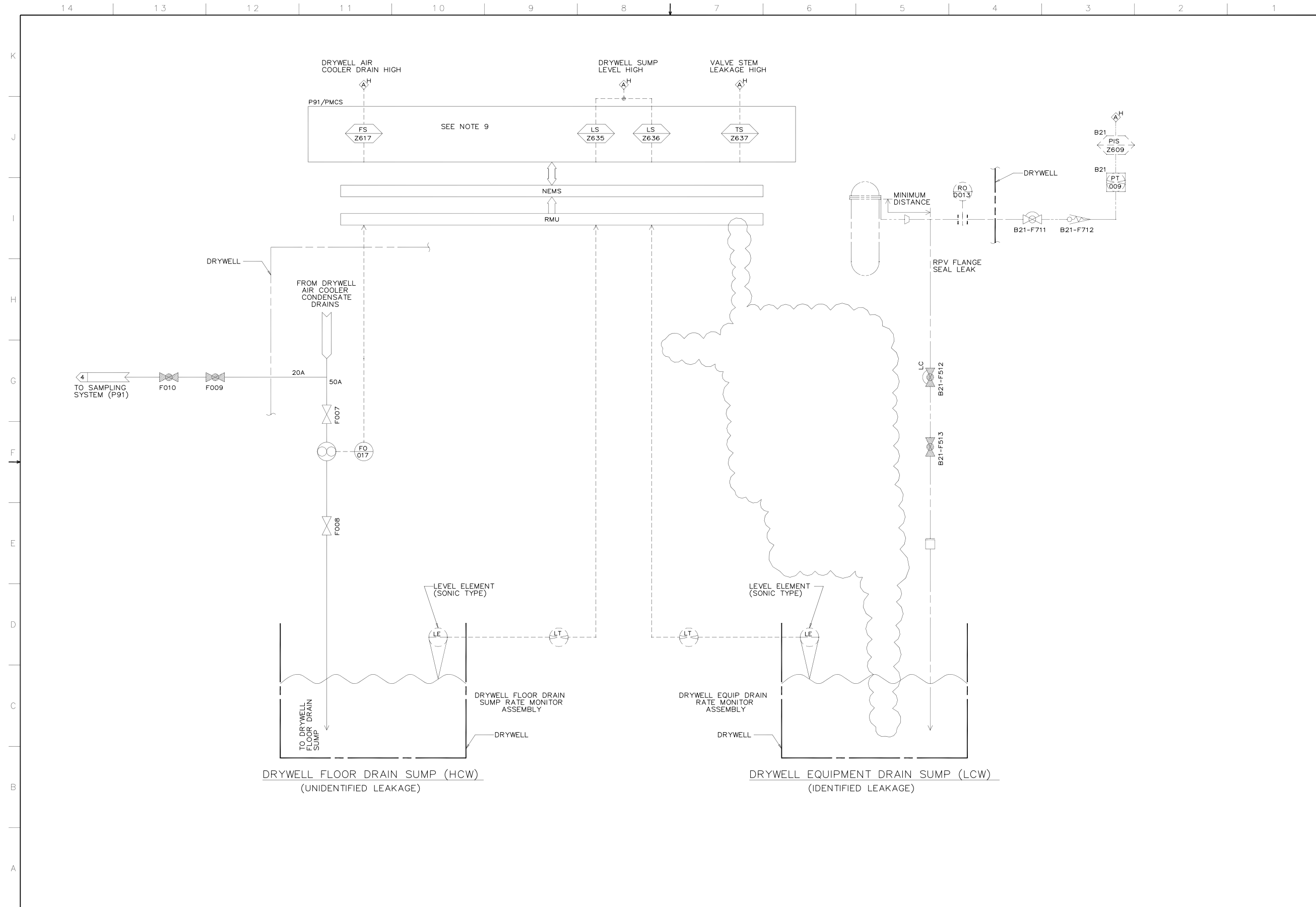
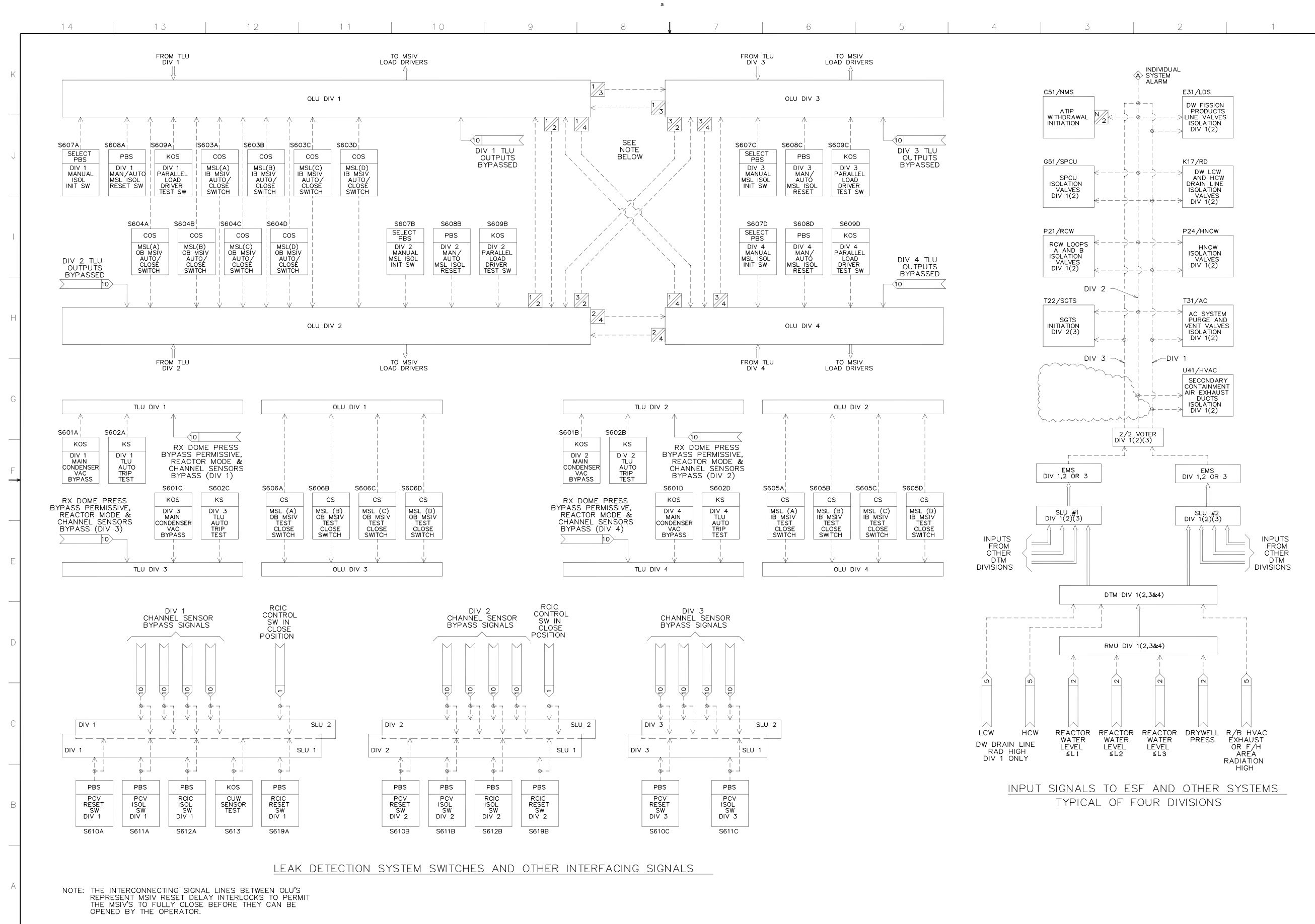


Figure 5.2-8 – Leak Detection and Isolation System IED (Sheet 8 of 10)



NOTE: THE INTERCONNECTING SIGNAL LINES BETWEEN OLU'S REPRESENT MSIV RESET DELAY INTERLOCKS TO PERMIT THE MSIV'S TO FULLY CLOSE BEFORE THEY CAN BE OPENED BY THE OPERATOR.

LEAK DETECTION SYSTEM SWITCHES AND OTHER INTERFACING SIGNALS

Figure 5.2-8 – Leak Detection and Isolation System IED (Sheet 10 of 10)