


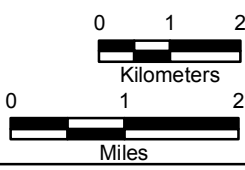


- Note:
- 1) Main Reservoir is also known as Harris Reservoir.
 - 2) Auxilliary Reservoir normal pool elevation is 252-feet NGVD29.
 - 3) Main Reservoir normal pool elevation is 220-feet NGVD29.

LEGEND

- Major Lakes, Rivers, and Streams
-  HNP
-  HAR Site
-  Buckhorn Creek Drainage Basin



Progress Energy Carolinas
**Shearon Harris Nuclear Power Plant
 Units 2 and 3**
Part 2, Final Safety Analysis Report
 New Hill, North Carolina

Buckhorn Creek Drainage Basin

FIGURE 2.4.1-208

Rev 0