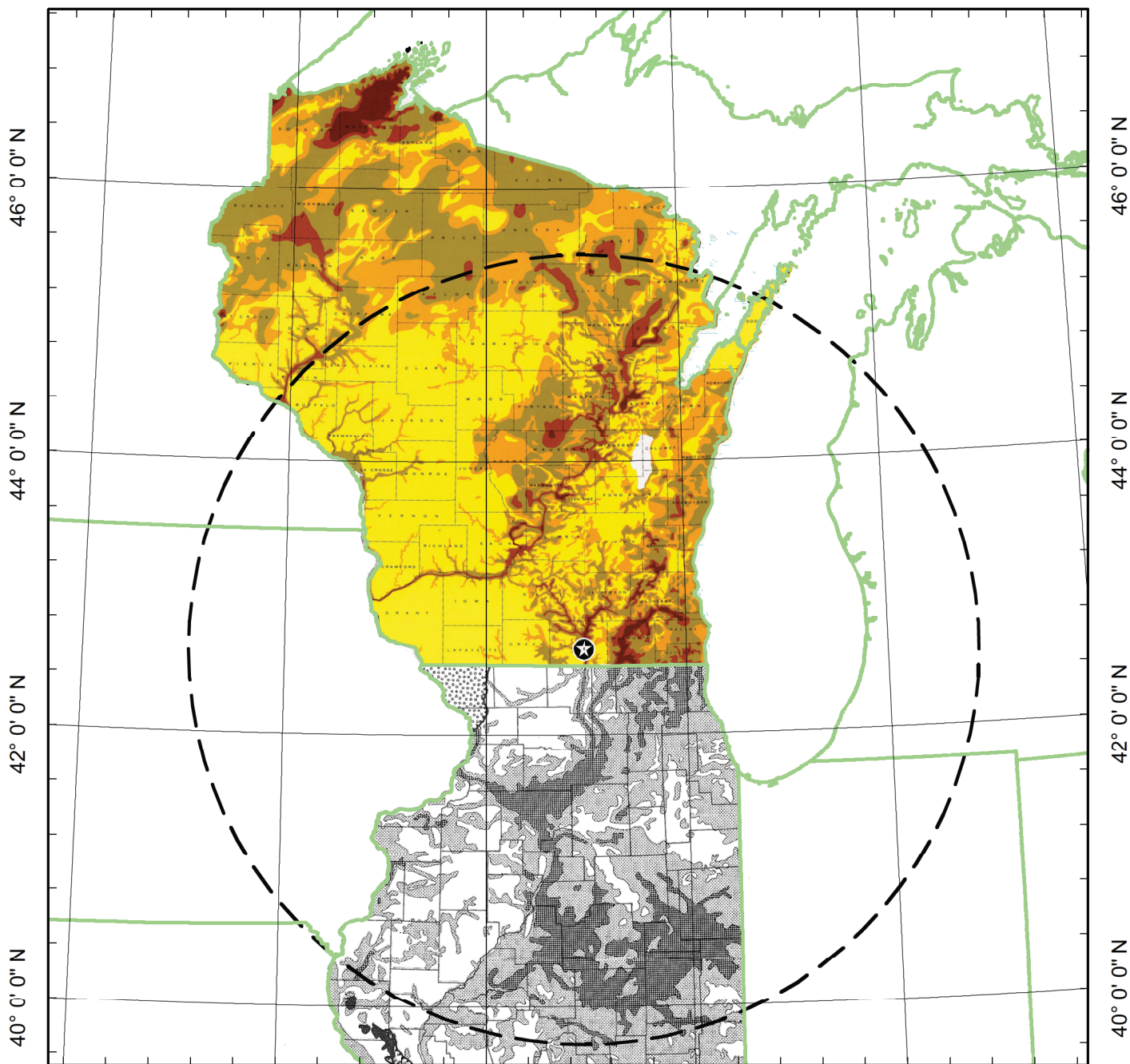


Figure 2.5-11 – Unconsolidated and Drift Thicknesses Map for Wisconsin and Northern Illinois

94° 0' 0" W      92° 0' 0" W      90° 0' 0" W      88° 0' 0" W      86° 0' 0" W      84° 0' 0" W

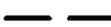


94° 0' 0" W      92° 0' 0" W      90° 0' 0" W      88° 0' 0" W      86° 0' 0" W

**LEGEND**



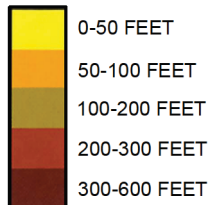
SHINE SITE



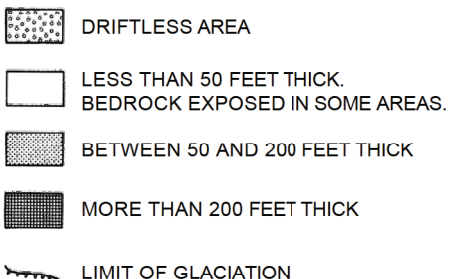
200 MILE (322 KM) RADIUS

**LEGEND FOR WISCONSIN**

THICKNESS OF UNCONSOLIDATED MATERIAL



**LEGEND FOR ILLINOIS**



**REFERENCE**

- 1.) ILLINOIS: PISKIN, K., AND BERGSTROM, R.E., 1975.
- 2.) WISCONSIN: WGNHS, 1983.

