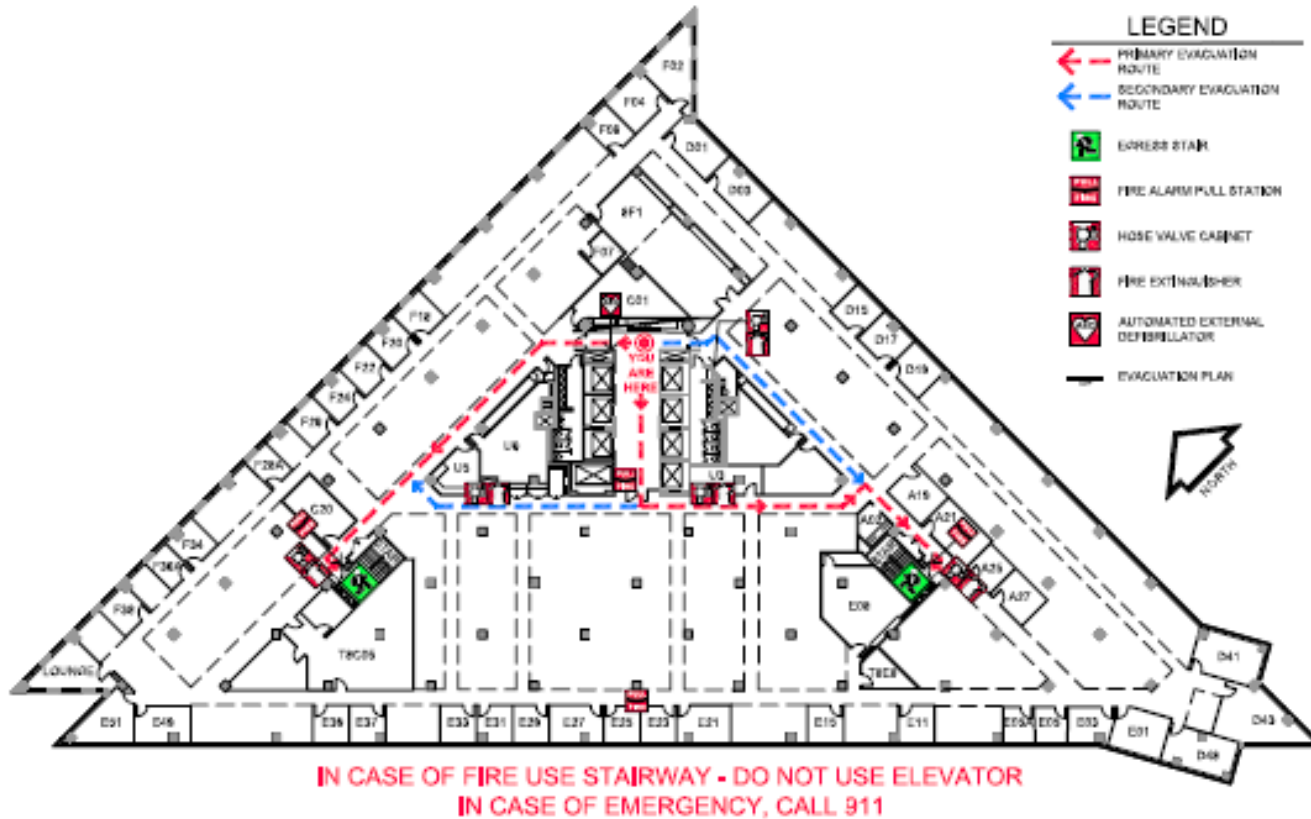


10 CFR Part 26 Subpart I “Managing Fatigue” Public Meeting

U.S. Nuclear Regulatory Commission Headquarters

April 11, 2013

Welcome to NRC Headquarters



NUCLEAR REGULATORY COMMISSION
TWO WHITE FLINT NORTH

11545 ROCKVILLE PIKE, ROCKVILLE, MARYLAND 20852-2746

Meeting Objective

- To discuss preliminary proposed rule language developed by the Nuclear Regulatory Commission (NRC) and released on March 29, 2013, regarding the definition of “unit outage,” and draft guidance material submitted by the Nuclear Energy Institute on February 13, 2013.

Agenda

1:00 p.m. – 1:05 p.m.	Opening Remarks	NRC
1:05 p.m. – 1:45 p.m.	Discussion of Preliminary Proposed Rule Language	NRC
1:45 p.m. – 3:45 p.m.	Discussion of NEI Draft Guidance Material	NRC
3:45 p.m. – 3:55 p.m.	Public Participation	
3:55 p.m. – 4:00 p.m.	Closing Remarks	NRC

Preliminary Proposed Rule Language Unit Outage Definition

- Background:
 - PRM-26-3 (Professional Reactor Operator Society (PROS))
 - Change “unit outage” to “site outage”
 - Allow “site outage” to start one week prior to main breaker opening
 - Allow “site outage” to conclude at 75% turbine power
 - PRM-26-5 (Nuclear Energy Institute (NEI))
 - Concur with PROS petition
 - Prefer 75% *reactor* power to 75% *turbine* power
 - February 23, 2012, Part 26 Public Meeting
 - NRC staff requested additional basis for changing “unit outage” to “site outage” and for changing the outage entry and exit points
 - October 18, 2012, Part 26 Public Meeting
 - NEI indicated that industry stakeholders no longer desire to change “unit outage” to “site outage”
 - No public meeting participants disagreed

Preliminary Proposed Rule Language Unit Outage Definition (cont.)

- **NRC Staff Objectives:**
 - Prevent licensees from entering an additional 60-day outage period due to an aborted/failed startup
 - Provide for sufficient time from beginning of startup to complete normal startup evolutions (reactor physics testing, chemistry holds, etc.)
 - Prevent licensees from operating for a prolonged period at reduced power levels under outage work hour controls
- **Feedback:**
 - Does the preliminary proposed rule language, as written, satisfy these objectives?
 - If not, how can the NRC improve the language while satisfying the above objectives?

Preliminary Proposed Rule Language Unit Outage Definition (cont.)

Unit outage means, for the purpose of this part, **the period from when the reactor unit is disconnected from the electrical grid until the reactor unit achieves 75 percent reactor power or until 7 **calendar** days have elapsed since reconnecting the reactor unit to the electrical grid, whichever is shorter.**

Changes from existing regulatory text indicated in **red**.

Discussion of Industry-Provided Draft Guidance Material

Bases for NRC Staff Comments

- Reviewed against:
 - Rule text and Federal Register Notice (FRN) for 2008 final rule (73 FR 16966 – March 31, 2008)
 - Rule text and FRN for 2011 alternative to MDO (76 FR 43534 – July 21, 2011)
 - Regulatory Guide 5.73, including Appendix B (March 2009)
 - NEI 06-11, Rev. 1 (ADAMS Accession No. ML090360158)
 - June 24, 2011, Addendum to NEI 06-11, Rev. 1 (ADAMS Accession No. ML112920586)
 - NRC responses to FAQs re: managing fatigue at <https://forms.nrc.gov/reactors/operating/ops-experience/fitness-for-duty-programs/faqs/manage-fatigue.html>

General Comments

- Usability
 - Organization of the document
 - Introduction of new terms
- Completeness
- Inconsistencies with rule text, previous staff positions

Editorial Concerns

- Suggested re-organization to
 - Discuss the framework for the requirements
 - Introduce concepts and terms before they are used
 - Reduce redundancies
- Consider not introducing more new terms, such as break limits, ceiling limits, covered worker, on-line averaging

Examples of Substantive Questions/Concerns

- Revised definitions of maintenance activities
- Calculation of travel time
- Inclusion of “transit to and from turnover stations including compliance with radiological and personal safety requirements” in the definition of shift turnover
- Combining guidance for fatigue assessments with supervisory assessments for waivers
- Lack of clarity re: different MDO requirements for different job duty groups

Review of Sequestration Material

- NEI delivered input regarding licensee staff sequestration during hazardous events
 - Comments on NRC-developed preliminary proposed rule language
 - Note indicating that no draft guidance was developed since appendix A to Part 26 would serve as sufficient guidance
 - Alternative concept
- NRC will consider NEI input along with other comments received on proposed rule
 - NRC indicated on preliminary proposed rule language and during the January 28, 2013, public meeting that no comments would be accepted on the preliminary proposed rule language
 - NRC staff incorporated lessons learned from the January 28, 2013, public meeting into the proposed rule language
 - Proposed rule schedule does not permit re-opening discussion

Next Steps

- NRC staff to provide written detailed feedback, including a suggested revised outline – May 31, 2013
- Schedule at least one public meeting focused on the revised guidance so far – June 18, 2013
- Unresolved differences will be included as exceptions/additions/clarifications in draft regulatory guide

Questions?

Kamishan Martin

Kamishan.Martin@nrc.gov

301-415-3469

Dr. Valerie Barnes

Valerie.Barnes@nrc.gov

301-251-7585

Scott Sloan

Scott.Sloan@nrc.gov

301-415-1619