

Figure 9.5.1-1—Fire Water Distribution System
Sheet 1 of 13



Figure 9.5.1-1—Fire Water Distribution System
Sheet 2 of 13

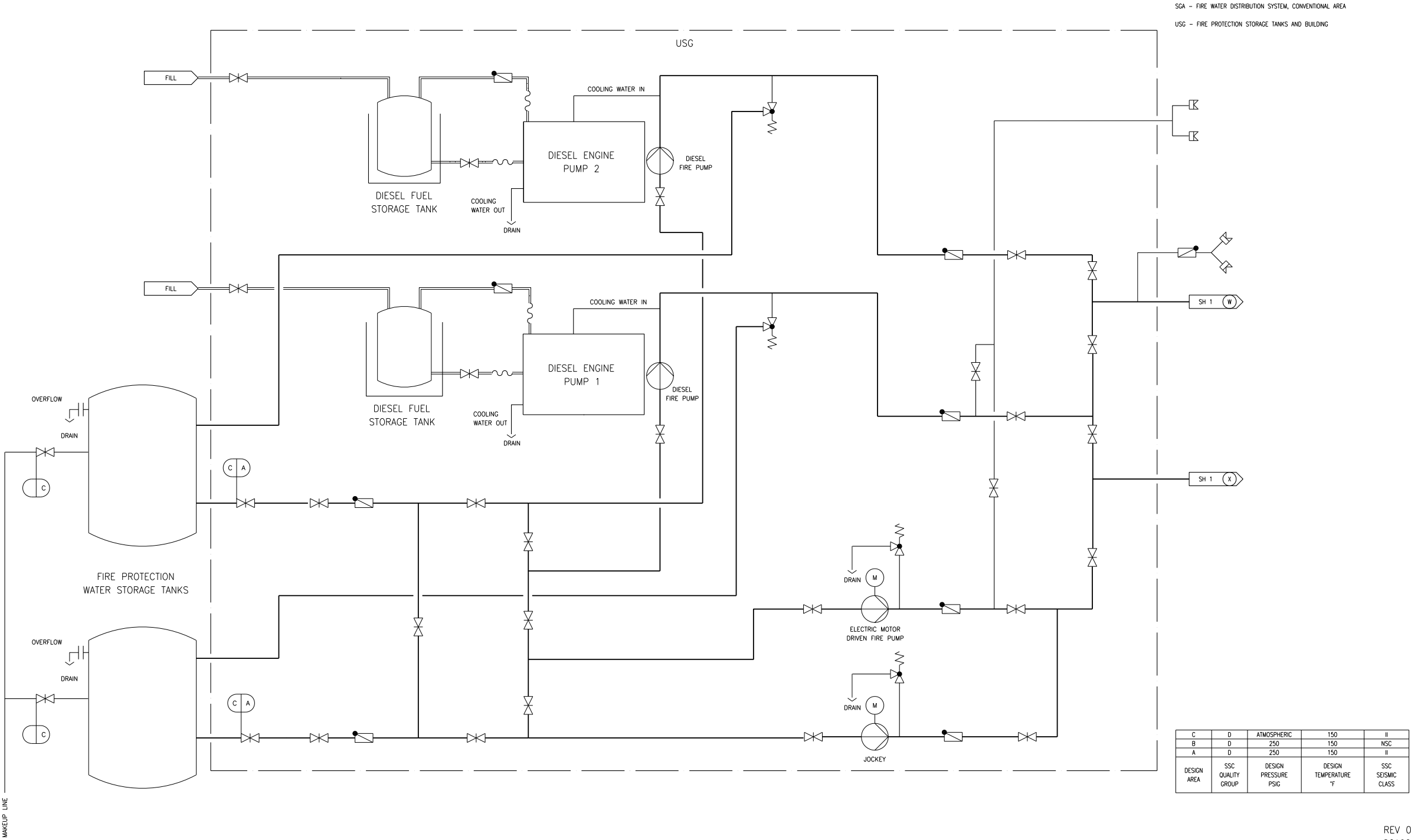
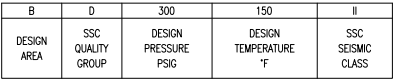


Figure 9.5.1-1—Fire Water Distribution System
Sheet 3 of 13

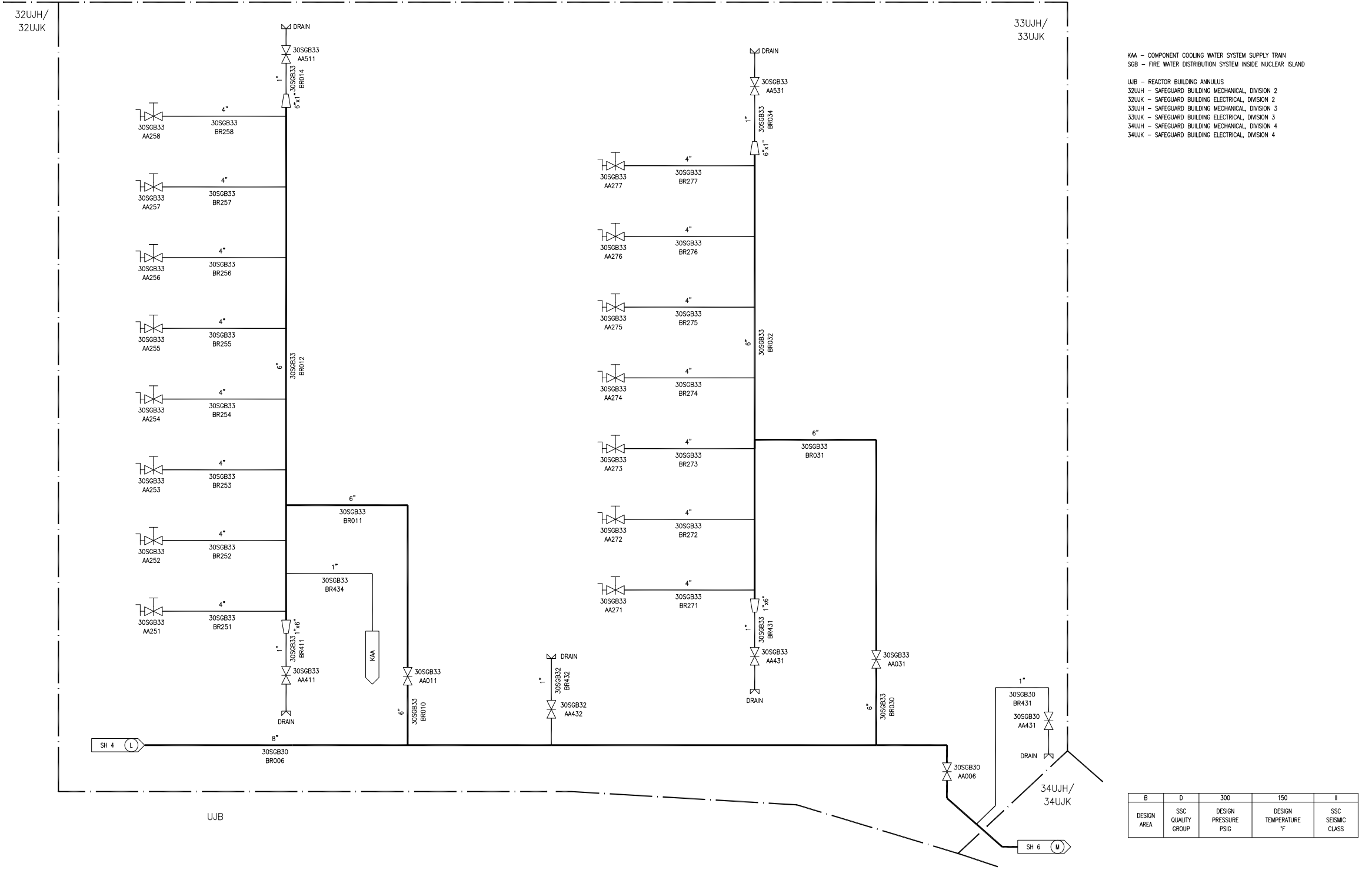


Figure 9.5.1-1—Fire Water Distribution System
Sheet 4 of 13



REV 004
SGB02T2

Figure 9.5.1-1—Fire Water Distribution System
Sheet 5 of 13



REV 004
SGB03T2

Figure 9.5.1-1—Fire Water Distribution System
Sheet 6 of 13

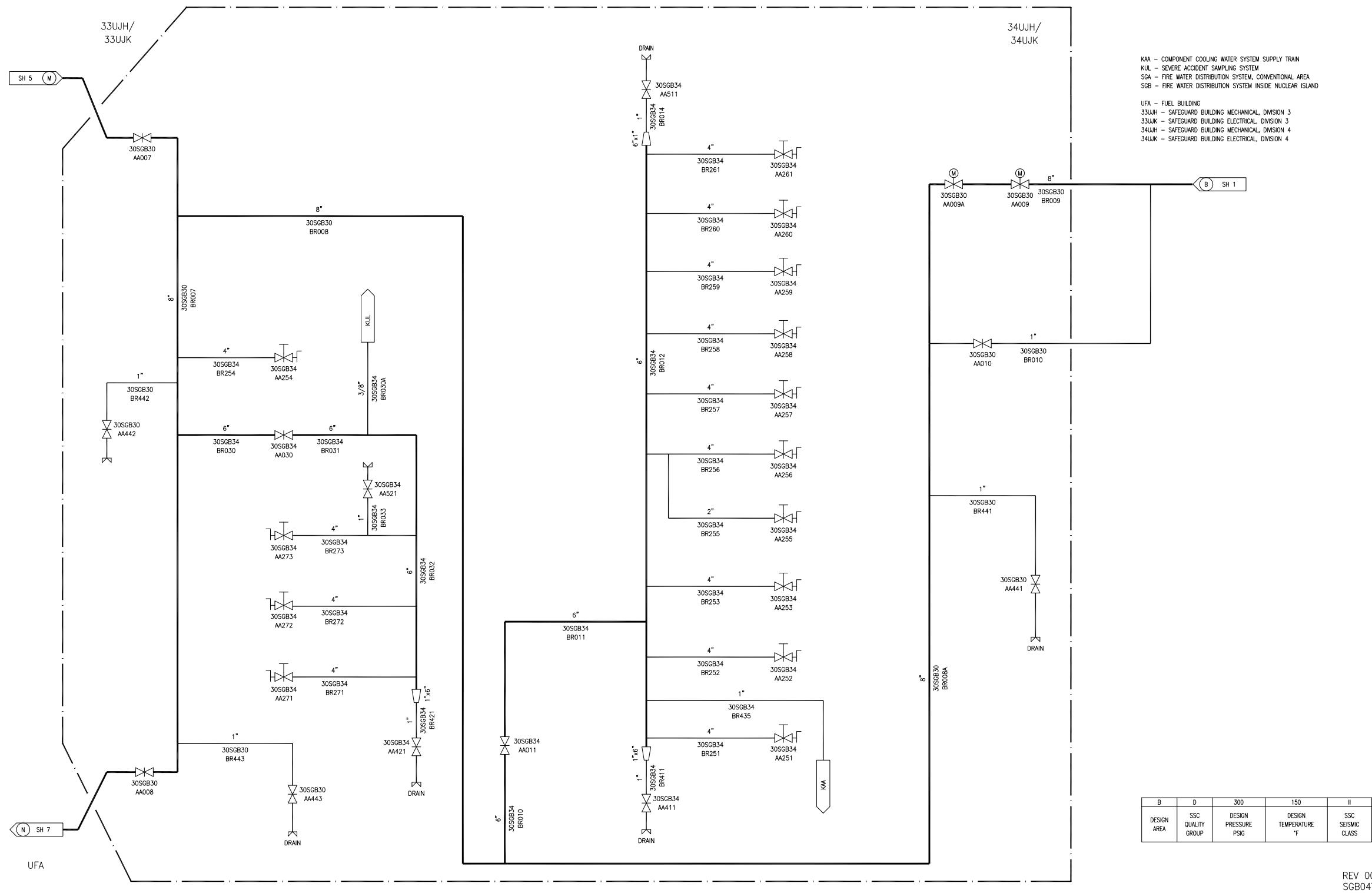
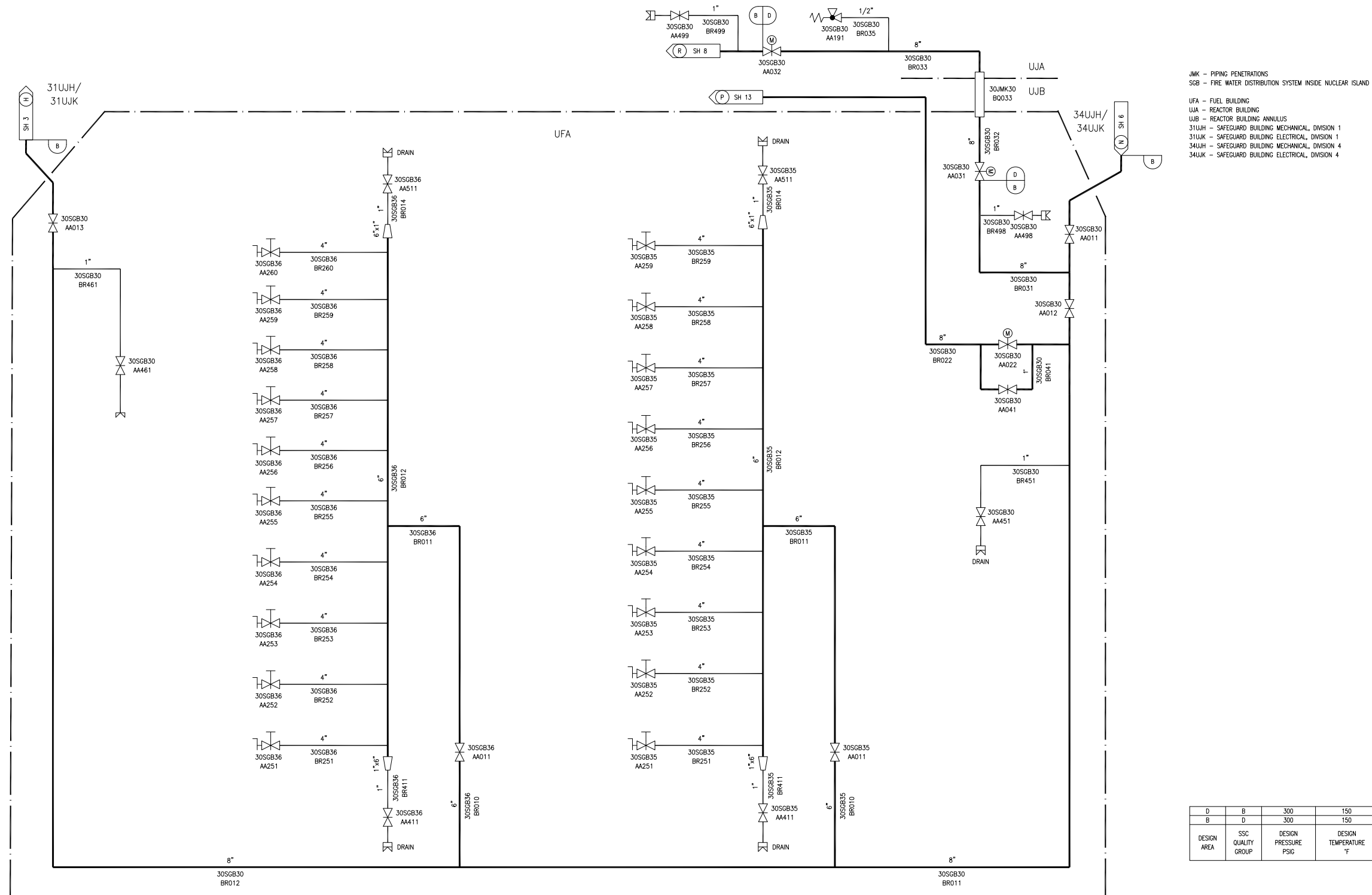


Figure 9.5.1-1—Fire Water Distribution System
Sheet 7 of 13



D	B	300	150	I
B	D	300	150	II
DESIGN AREA	SSC QUALITY GROUP	DESIGN PRESSURE PSIG	DESIGN TEMPERATURE 'F	SSC SEISMIC CLASS

REV 004
SGB05T2

Figure 9.5.1-1—Fire Water Distribution System
Sheet 8 of 13

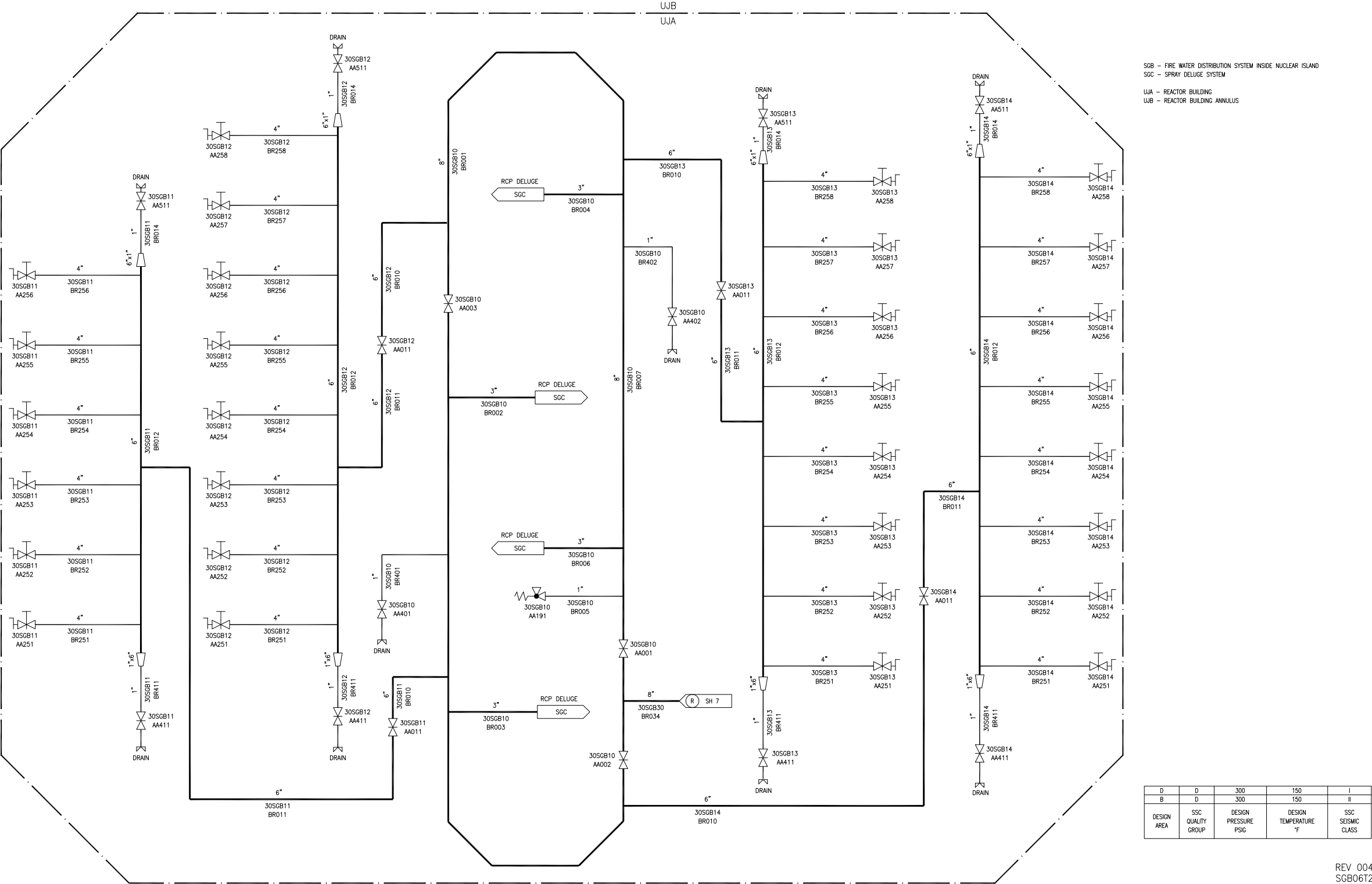


Figure 9.5.1-1—Fire Water Distribution System
Sheet 9 of 13

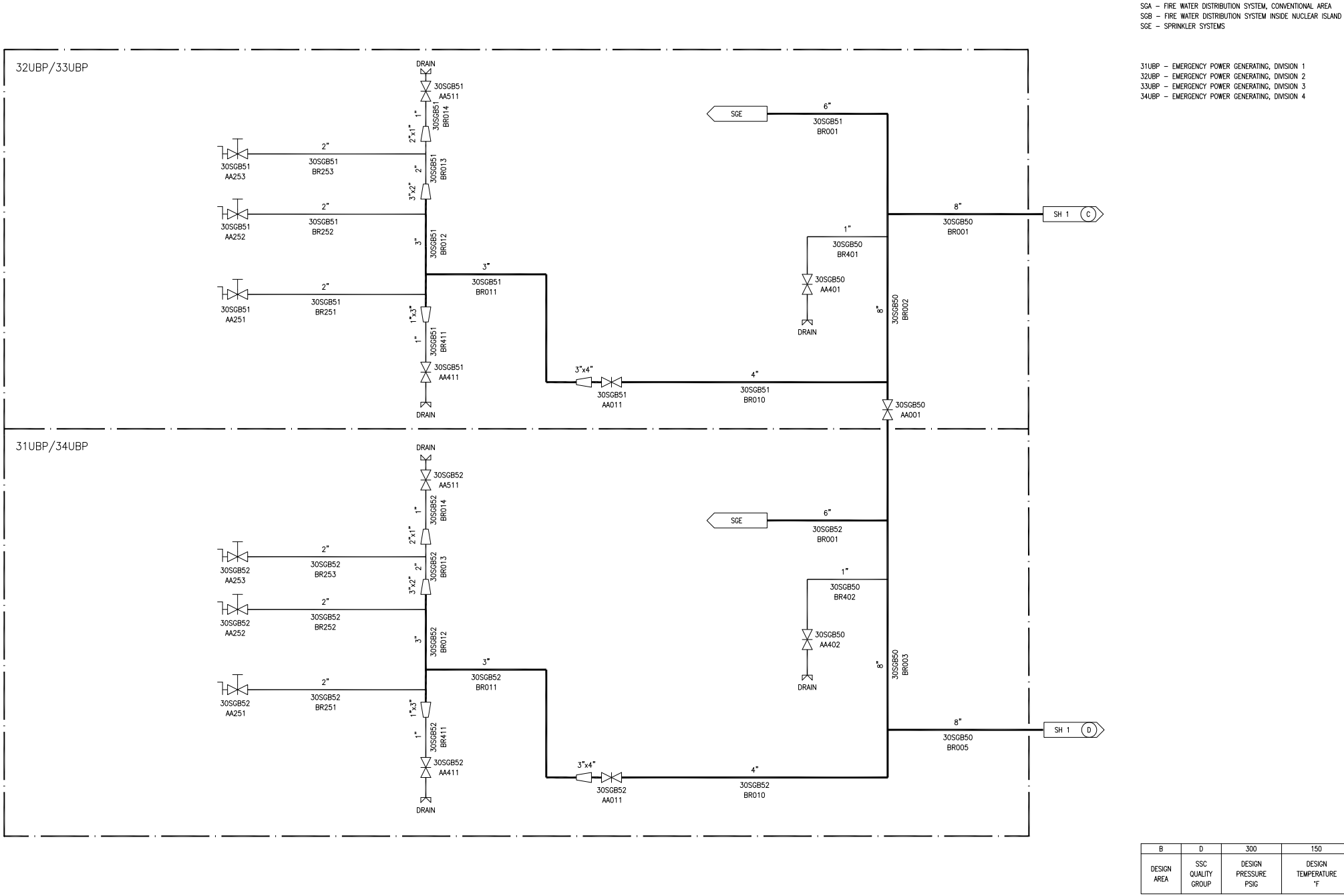
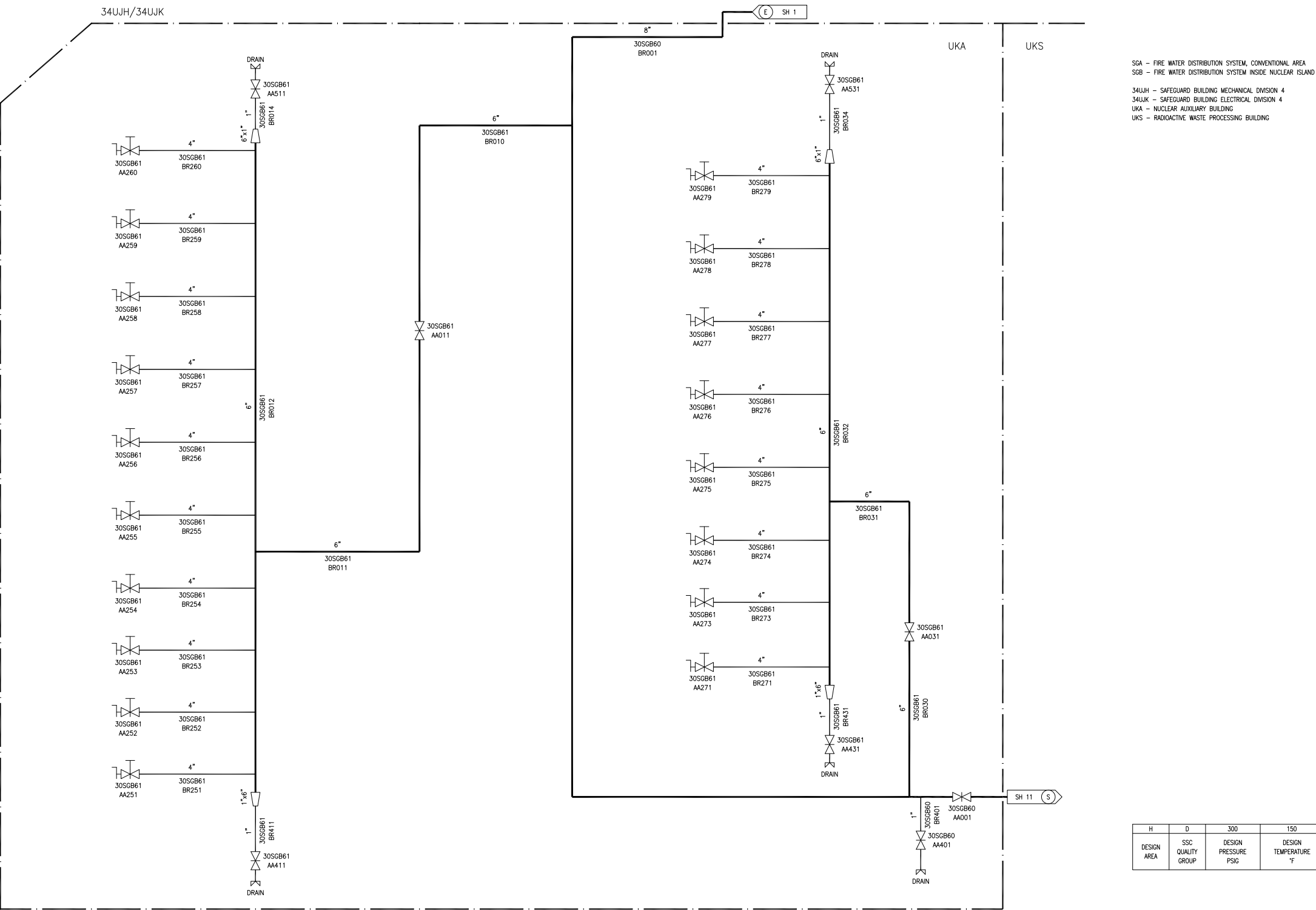


Figure 9.5.1-1—Fire Water Distribution System
Sheet 10 of 13



H	D	300	150	NSC
DESIGN AREA	SSC QUALITY GROUP	DESIGN PRESSURE PSIG	DESIGN TEMPERATURE °F	SSC SEISMIC CLASS

REV 004
SGB08T2

Figure 9.5.1-1—Fire Water Distribution System
Sheet 11 of 13

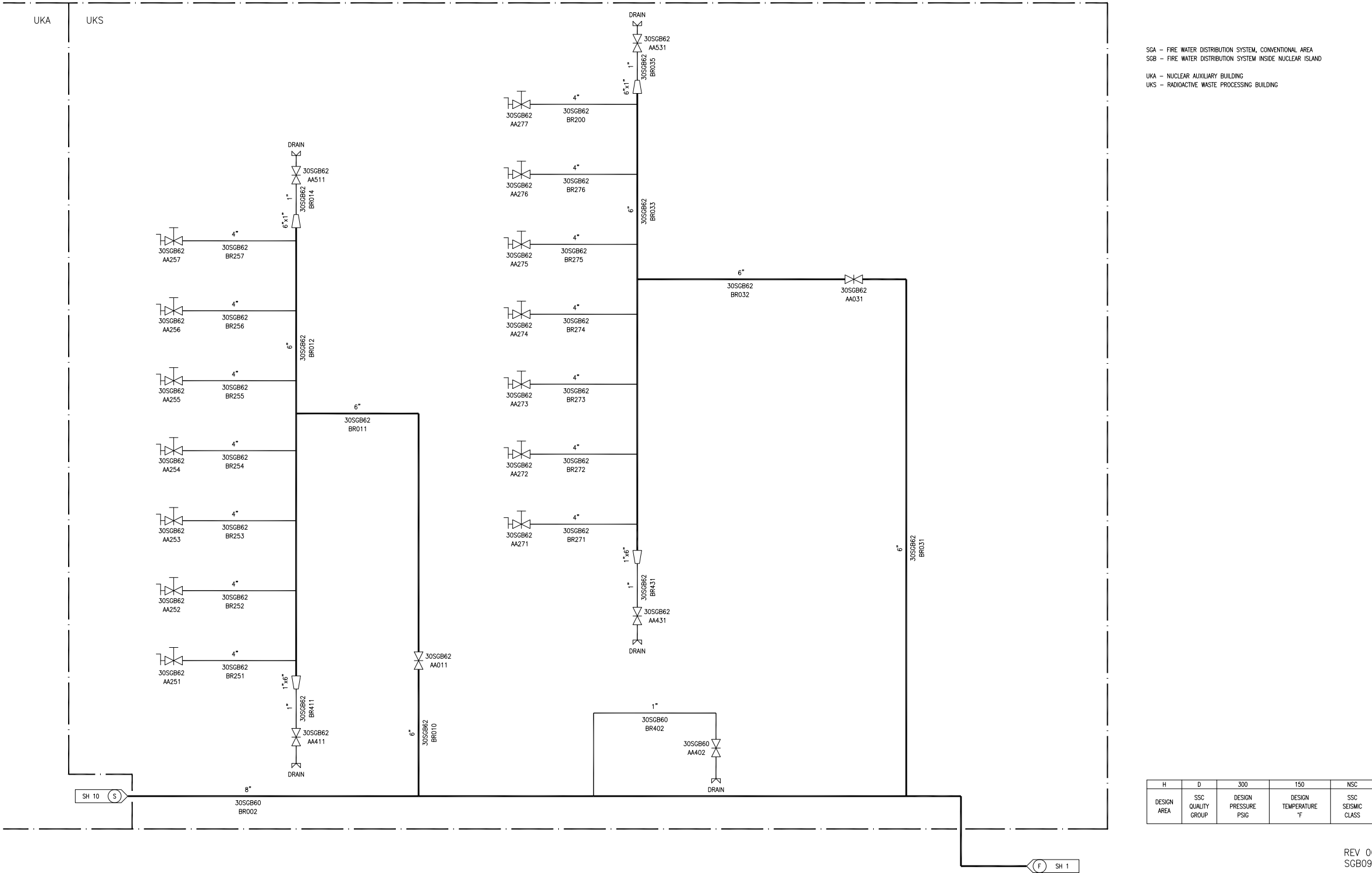
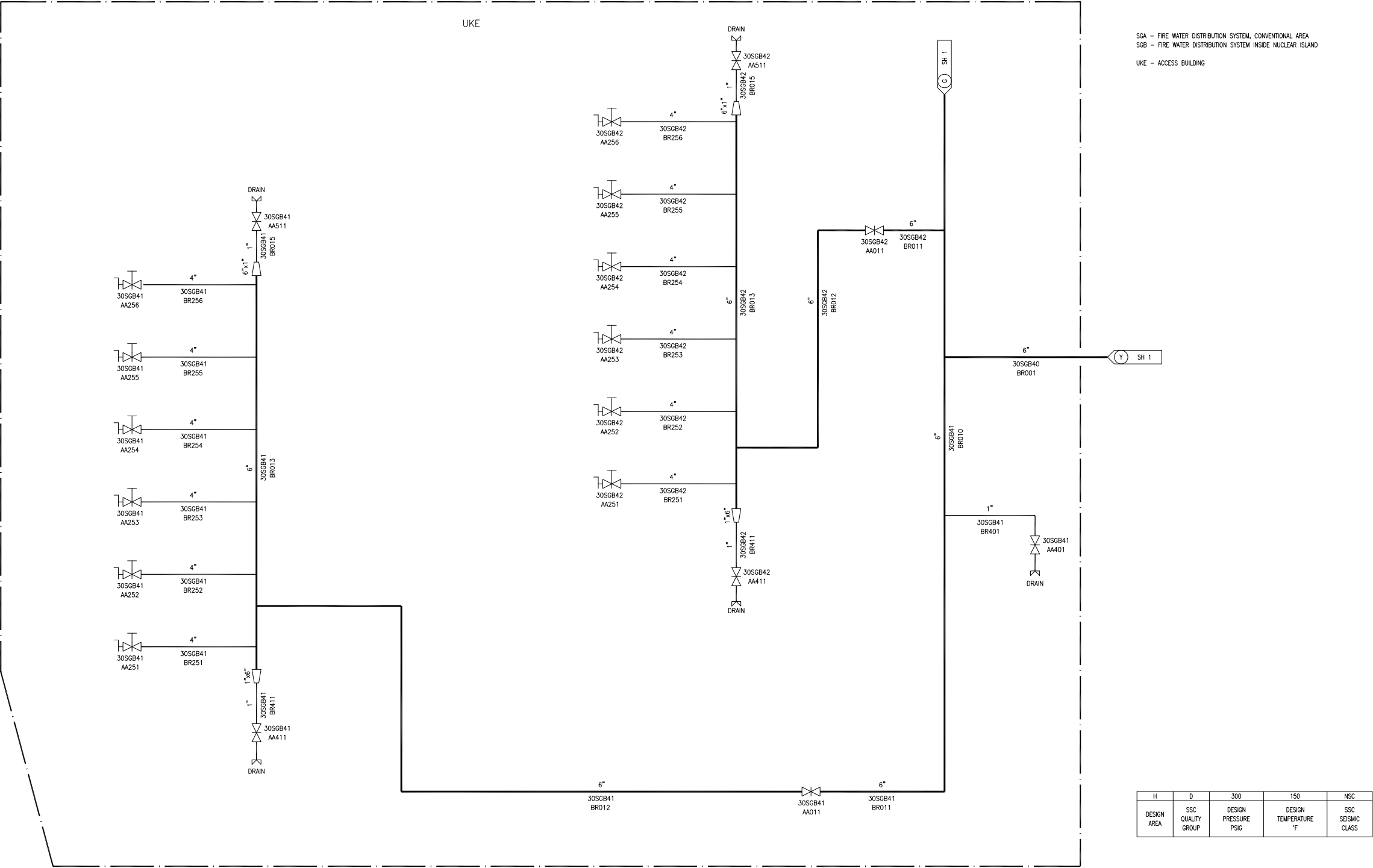


Figure 9.5.1-1—Fire Water Distribution System
Sheet 12 of 13

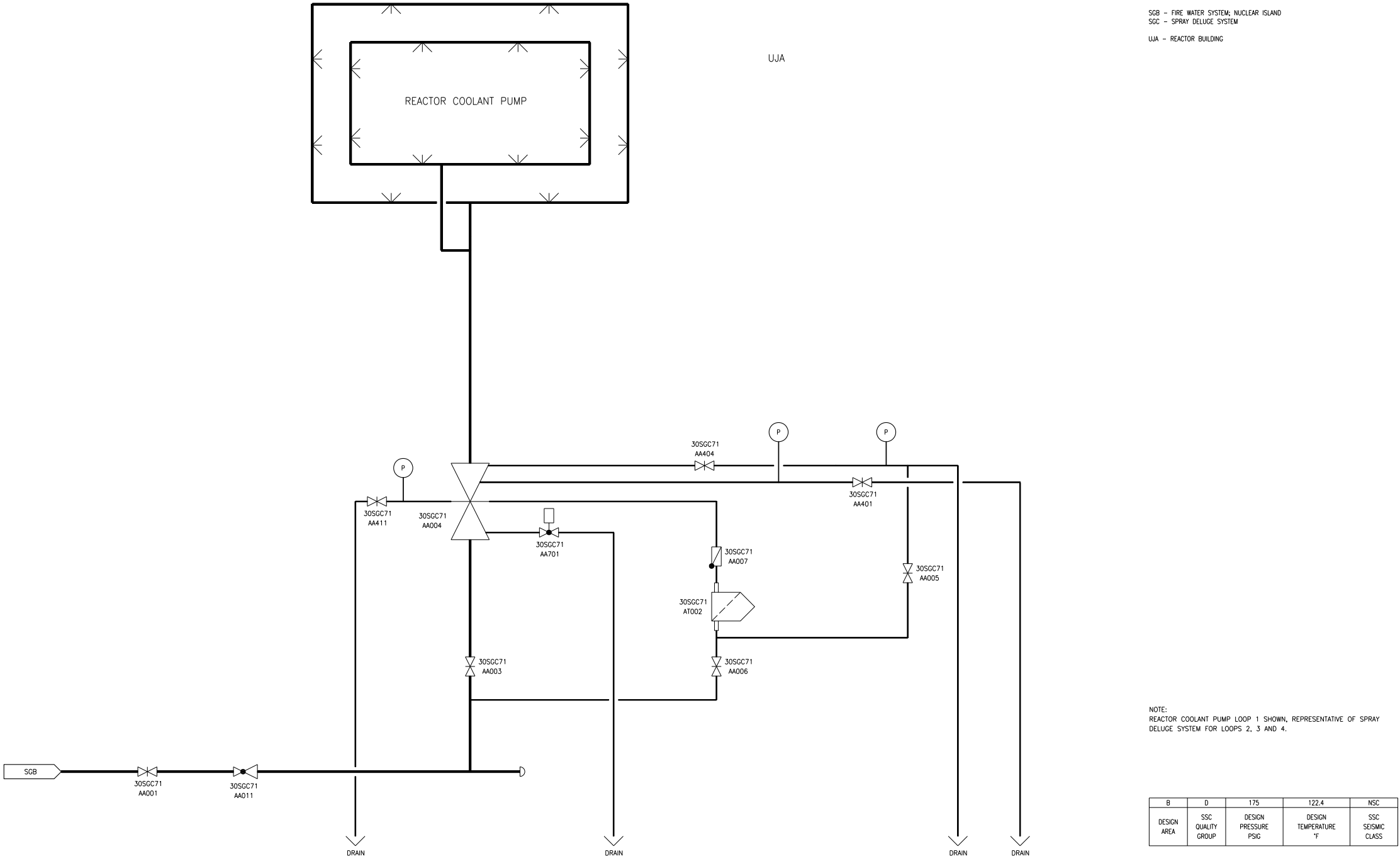


REV 004
SGB10T2

Figure 9.5.1-1—Fire Water Distribution System
Sheet 13 of 13

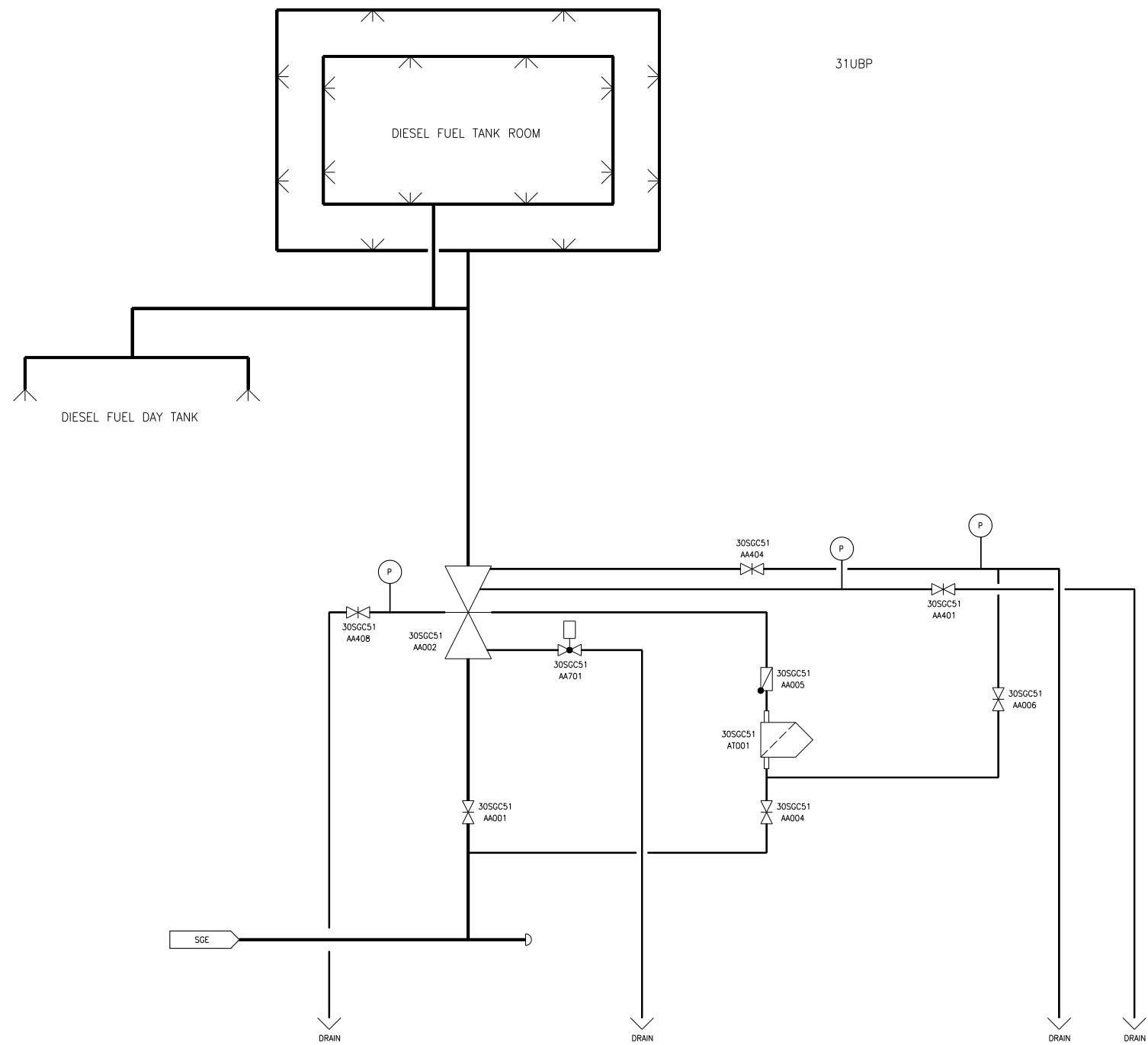


Figure 9.5.1-2—Spray Deluge Systems Layout
Sheet 1 of 2



SGC01T2

Figure 9.5.1-2—Spray Deluge Systems Layout
Sheet 2 of 2



SGC - SPRAY DELUGE SYSTEM
SGE - SPRINKLER SYSTEMS
31UBP - EMERGENCY DIESEL GENERATING BUILDING, DIVISION 1

NOTE:
SPRAY DELUGE DIVISION 1 SHOWN, REPRESENTATIVE OF DIVISIONS 2, 3 AND 4.

B	D	175	122.4	NSC
DESIGN AREA	SSC QUALITY GROUP	DESIGN PRESSURE PSIG	DESIGN TEMPERATURE °F	SSC SEISMIC CLASS

SGC02T2

Figure 9.5.1-3—Sprinkler Systems Layout

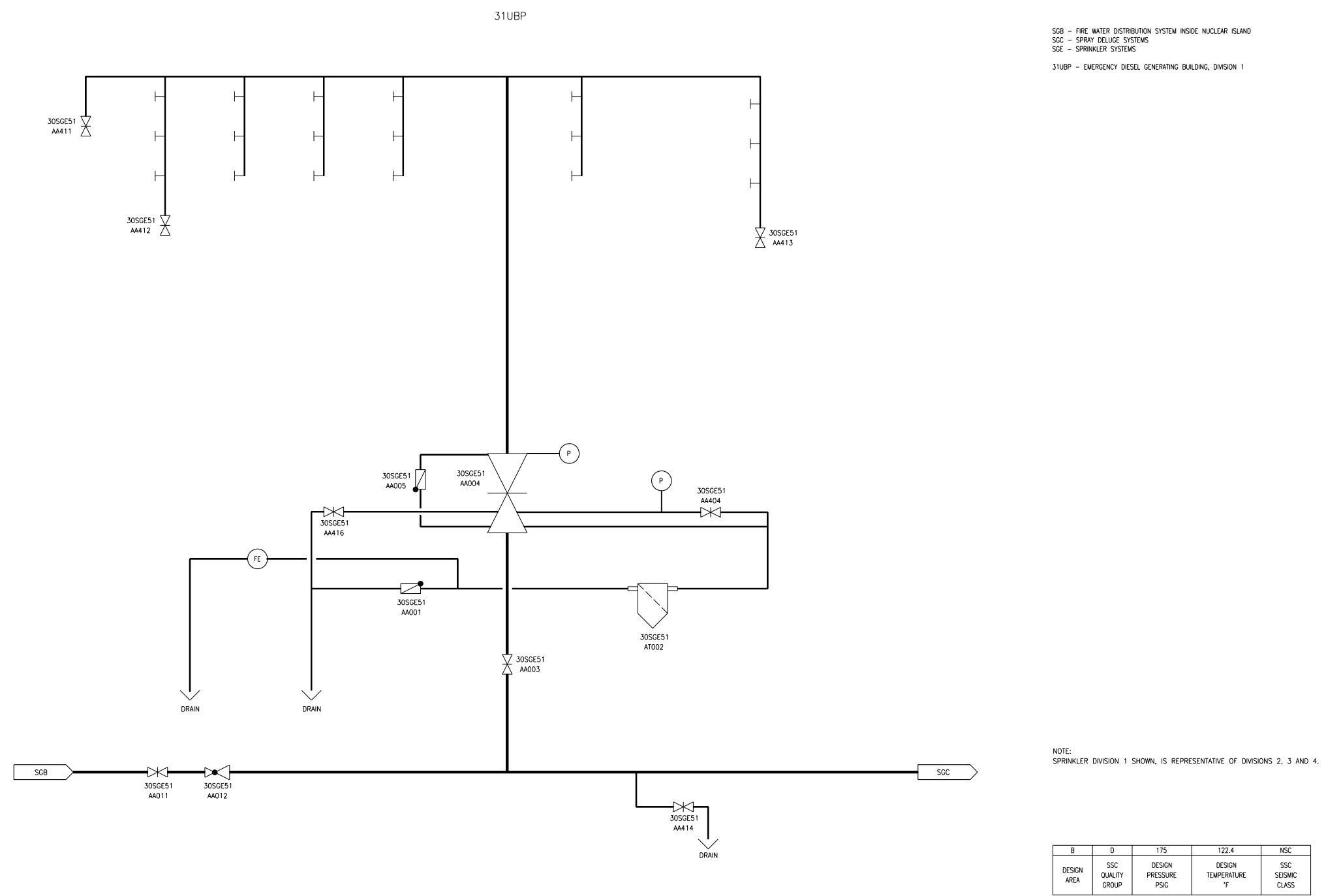
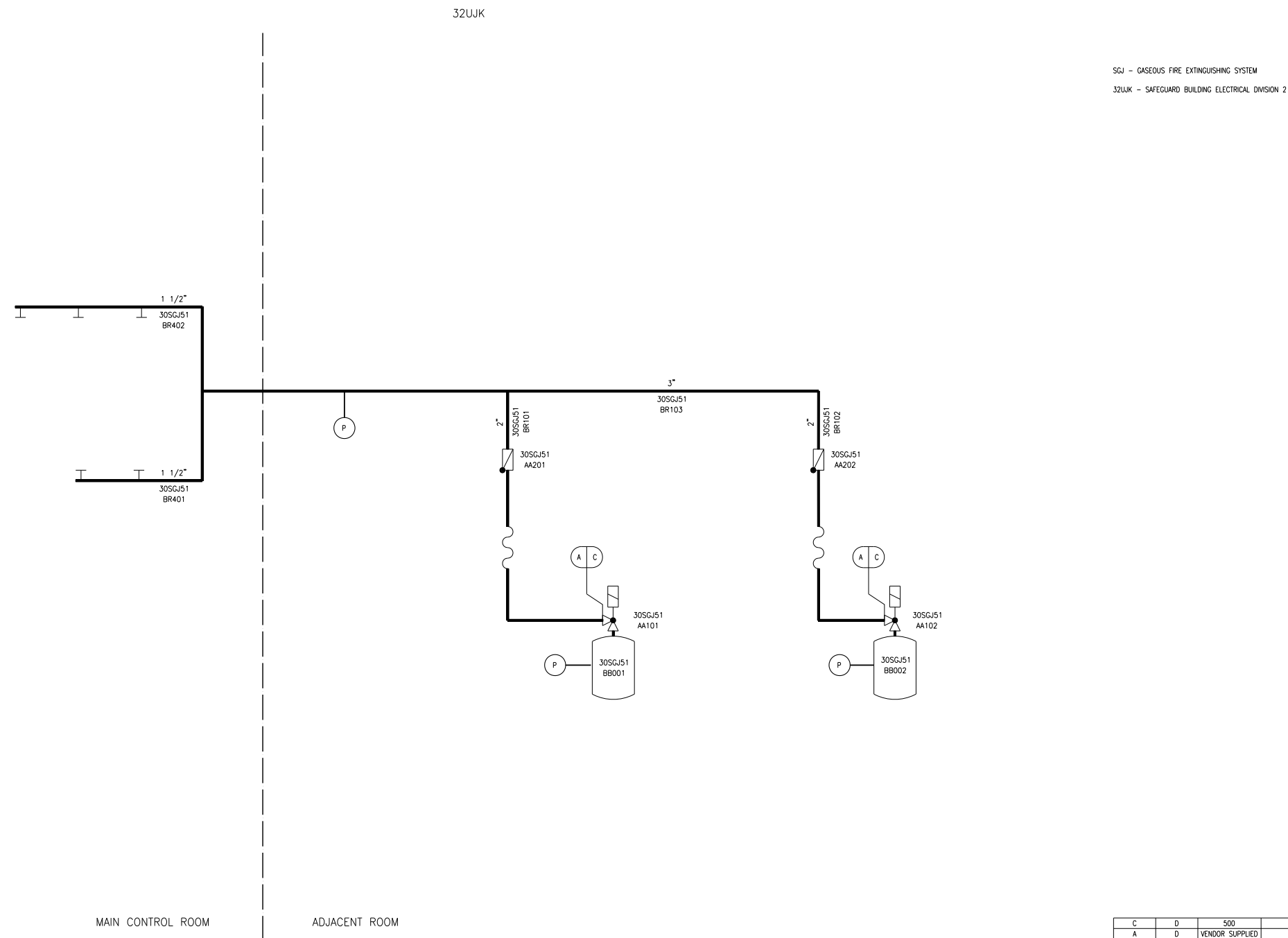


Figure 9.5.1-4—Gaseous Fire Extinguishing Systems Layout



C	D	500	80	NSC
A	D	VENDOR SUPPLIED	130	NSC
DESIGN AREA	SSC QUALITY GROUP	DESIGN PRESSURE PSIG	DESIGN TEMPERATURE °F	SSC SEISMIC CLASS

SGJ01T2