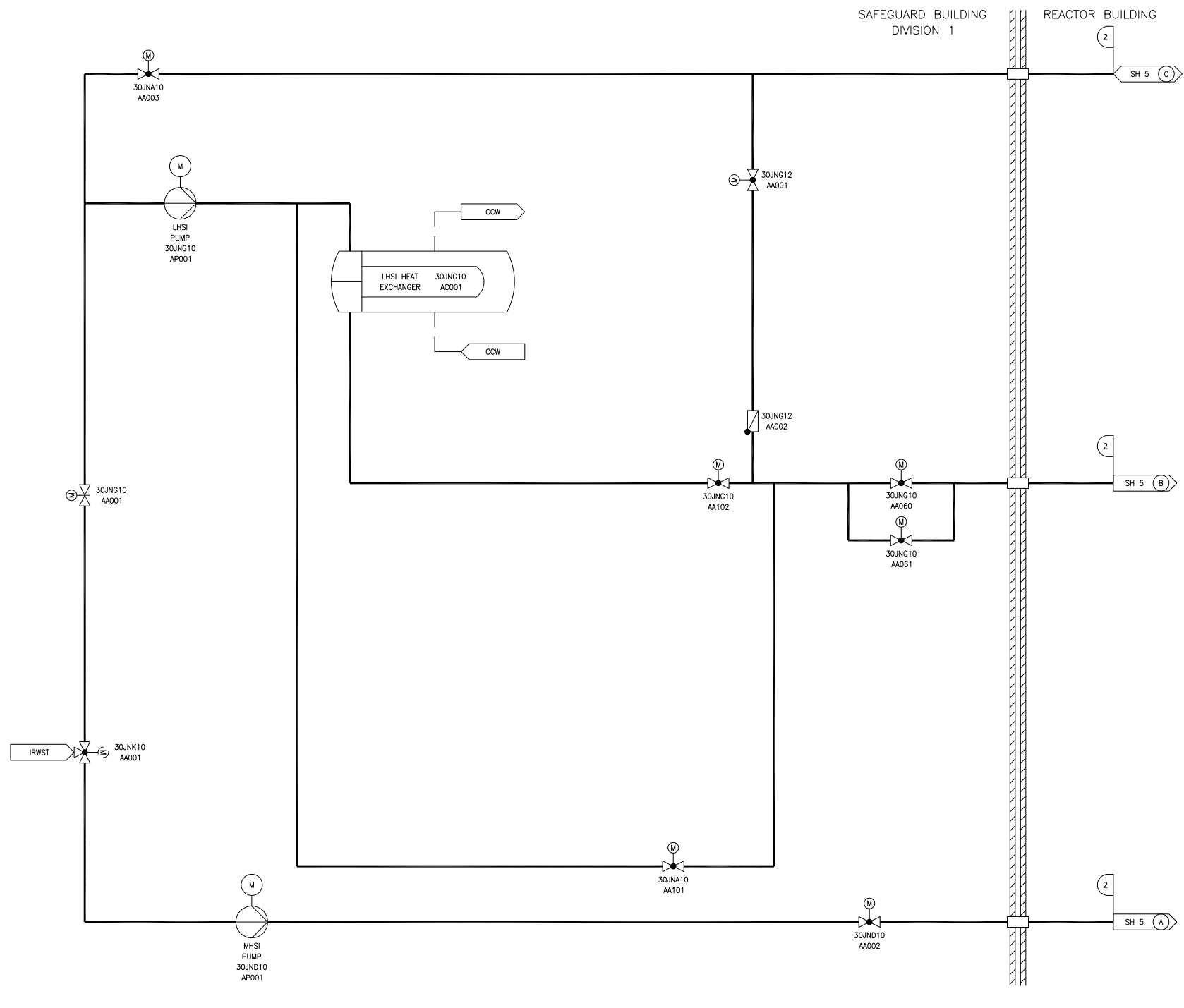


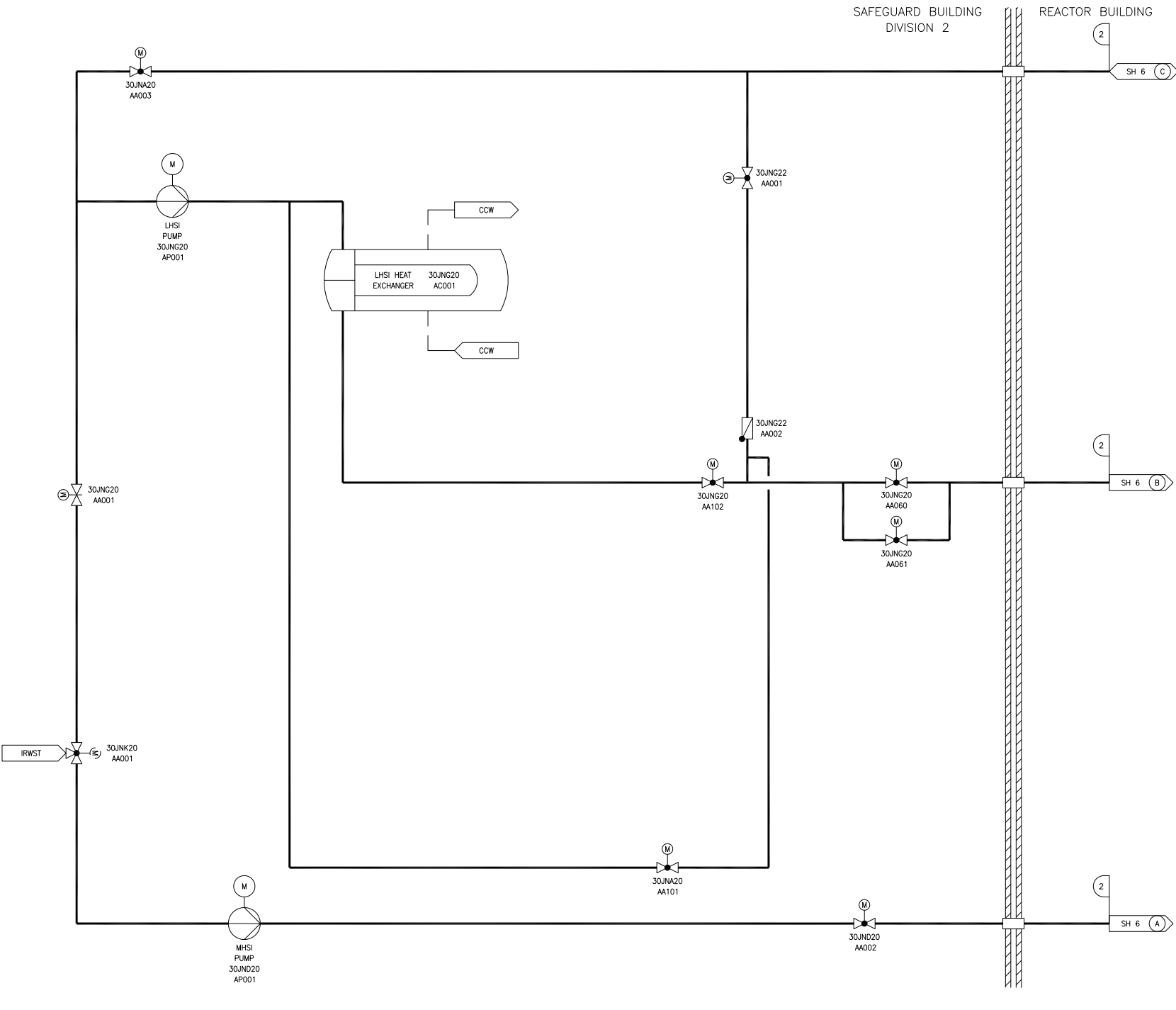
Figure 2.2.3-1—Safety Injection System and Residual Heat Removal System Functional Arrangement  
Sheet 1 of 8



2	2	1
DESIGN AREA	ASME, III CLASS	SSC SEISMIC CLASS

REV 003  
JNX01T1

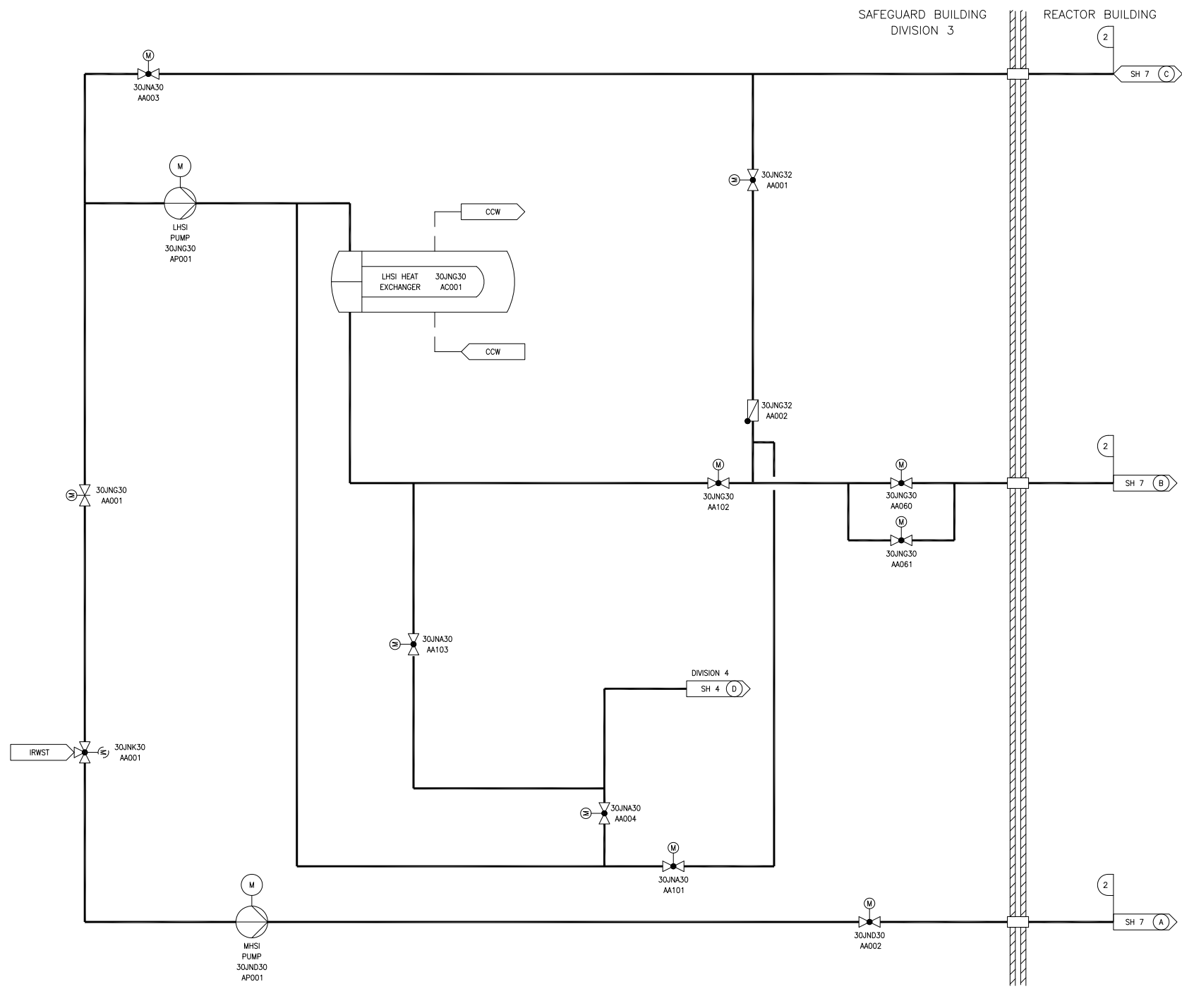
Figure 2.2.3-1—Safety Injection System and Residual Heat Removal System Functional Arrangement  
Sheet 2 of 8



2	2	1
DESIGN AREA	ASME, III CLASS	SSC SEISMIC CLASS

REV 003  
JNX02T1

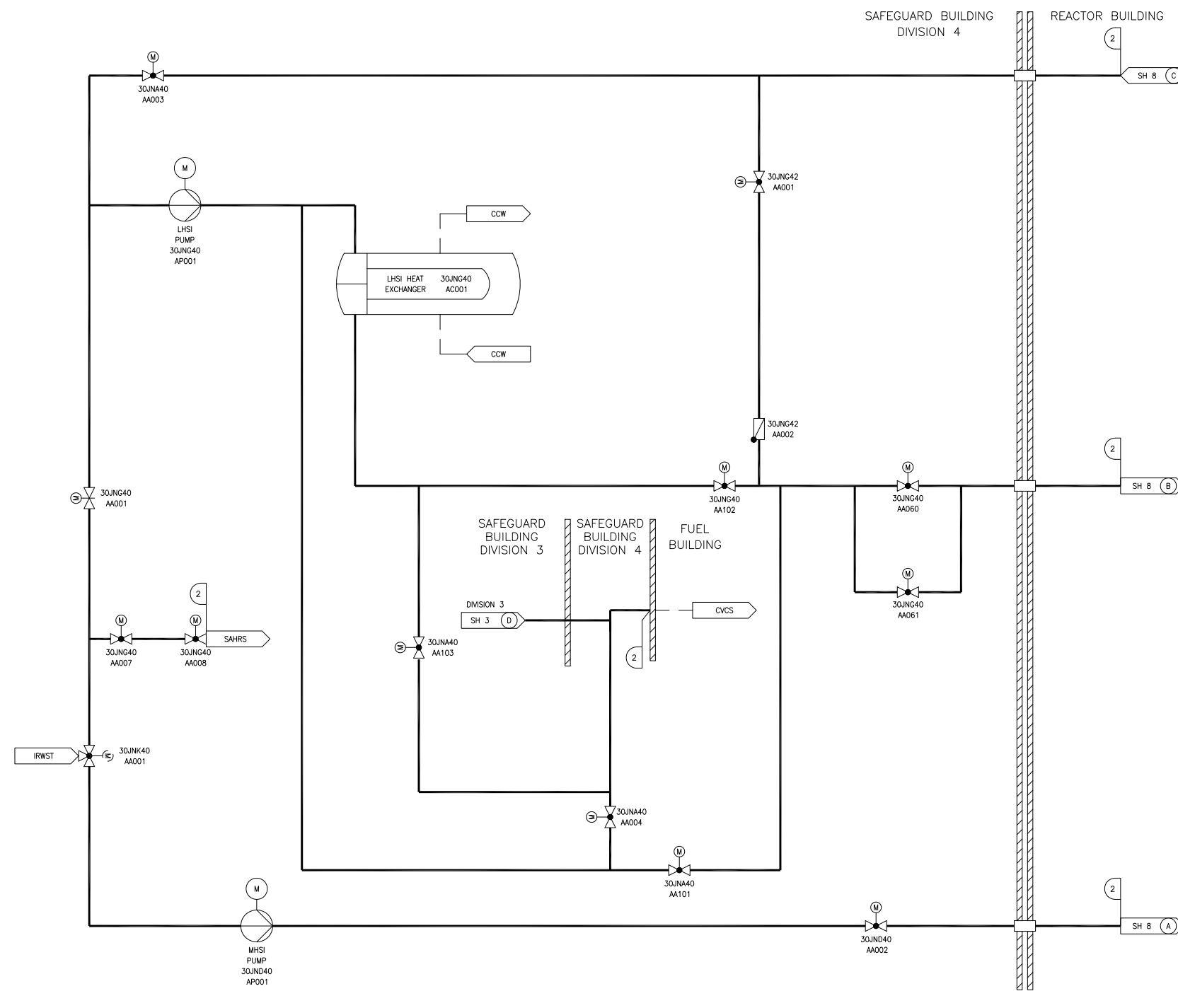
Figure 2.2.3-1—Safety Injection System and Residual Heat Removal System Functional Arrangement  
Sheet 3 of 8



2	2	1
DESIGN AREA	ASME, III CLASS	SSC SEISMIC CLASS

REV 003  
JNX03T1

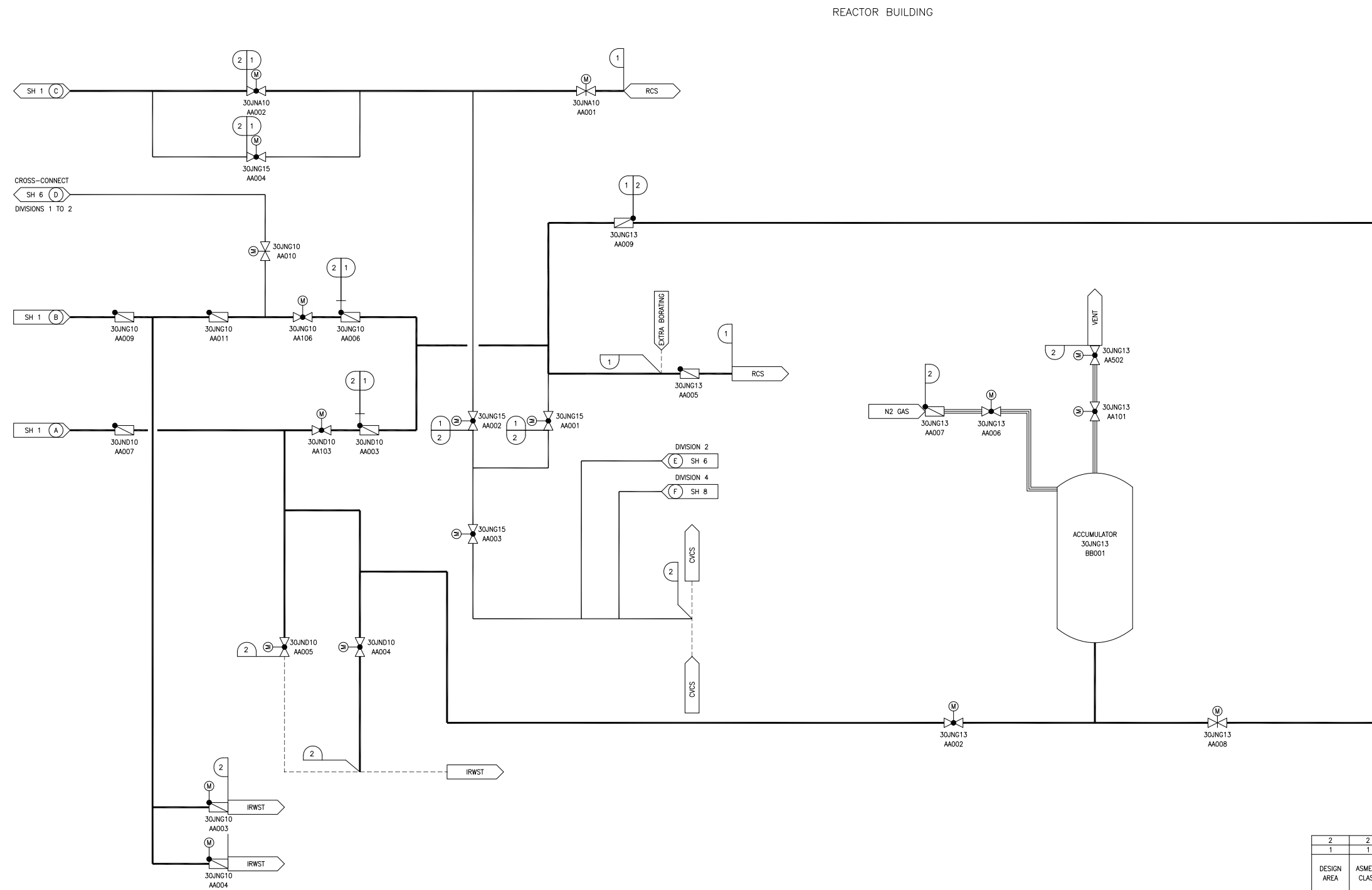
**Figure 2.2.3-1—Safety Injection System and Residual Heat Removal System Functional Arrangement**  
**Sheet 4 of 8**



2	2	I
DESIGN AREA	ASME III CLASS	SSC SEISMIC CLASS

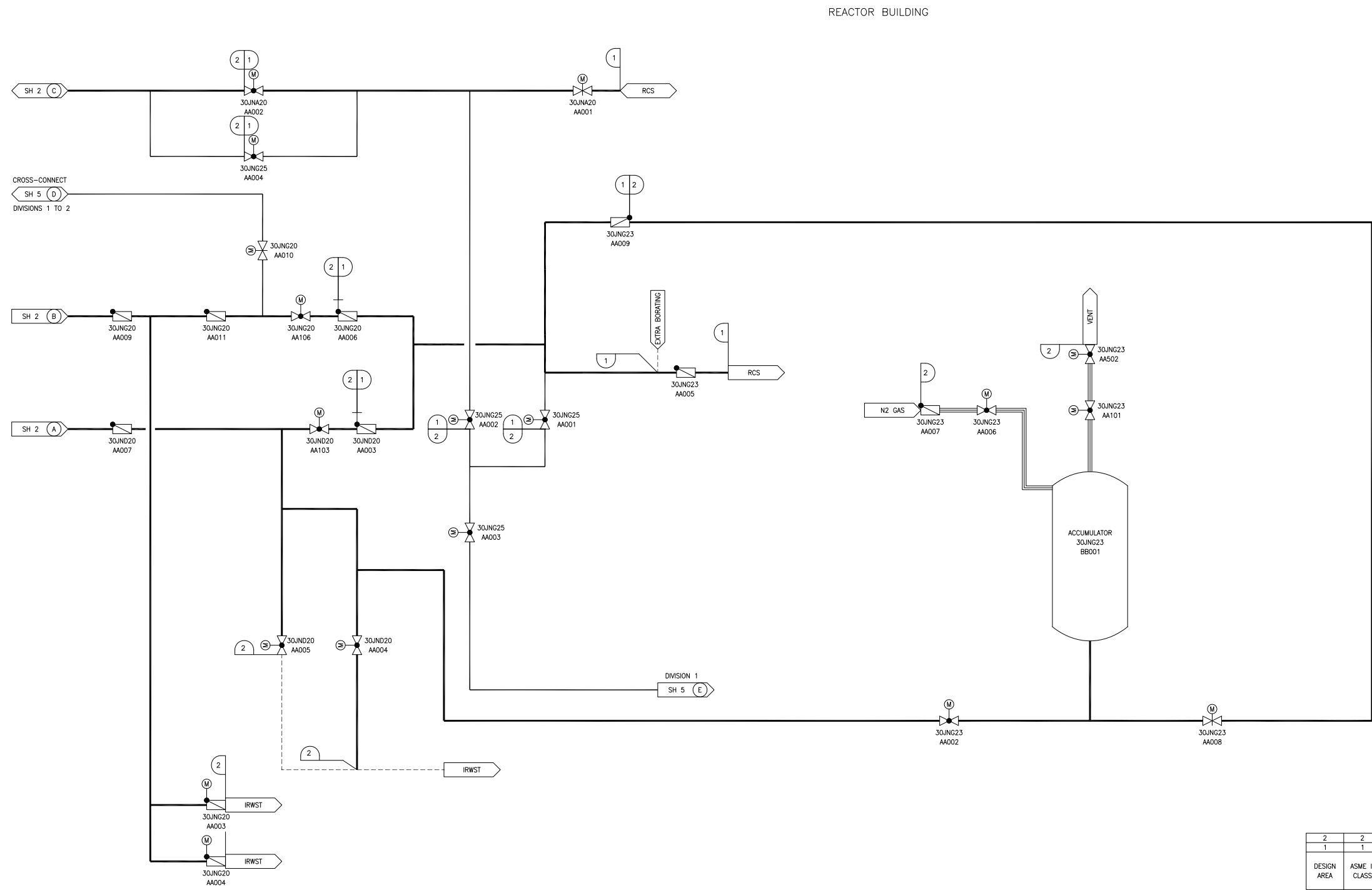
REV 003  
JNX04T1

**Figure 2.2.3-1—Safety Injection System and Residual Heat Removal System Functional Arrangement**  
Sheet 5 of 8



REV 003  
JNX05T1

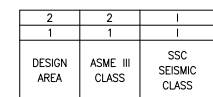
Figure 2.2.3-1—Safety Injection System and Residual Heat Removal System Functional Arrangement  
Sheet 6 of 8



2	2	1
1	1	1
DESIGN AREA	ASME III CLASS	SSC SEISMIC CLASS

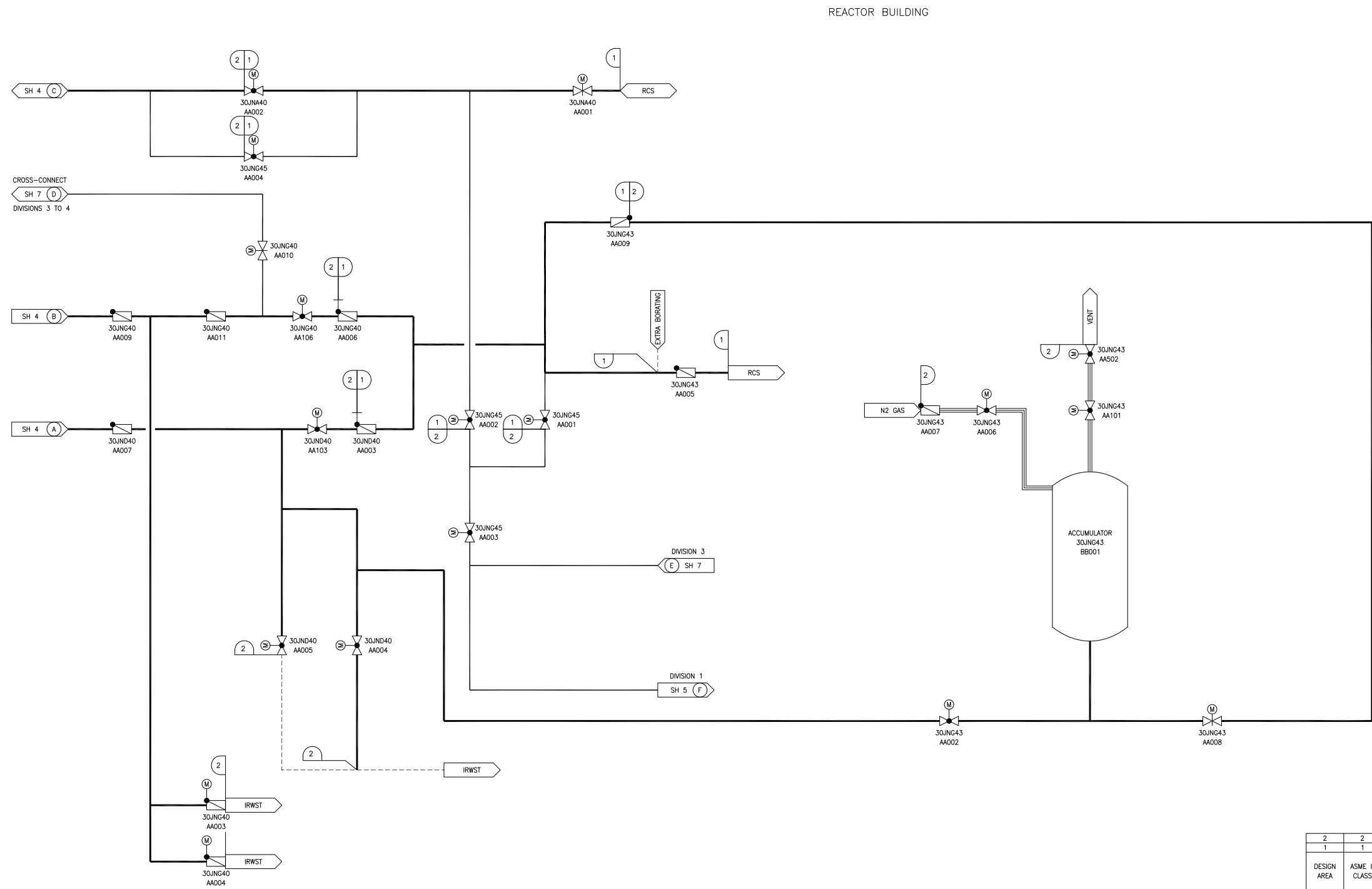
REV 003  
JNX06T1

Sheet 7 of 8



REV 003  
JNX07T1

Figure 2.2.3-1—Safety Injection System and Residual Heat Removal System Functional Arrangement  
Sheet 8 of 8



2	2	1
1	1	1
DESIGN AREA	ASME III CLASS	SSC SEISMIC CLASS

REV 003  
JNX08T1