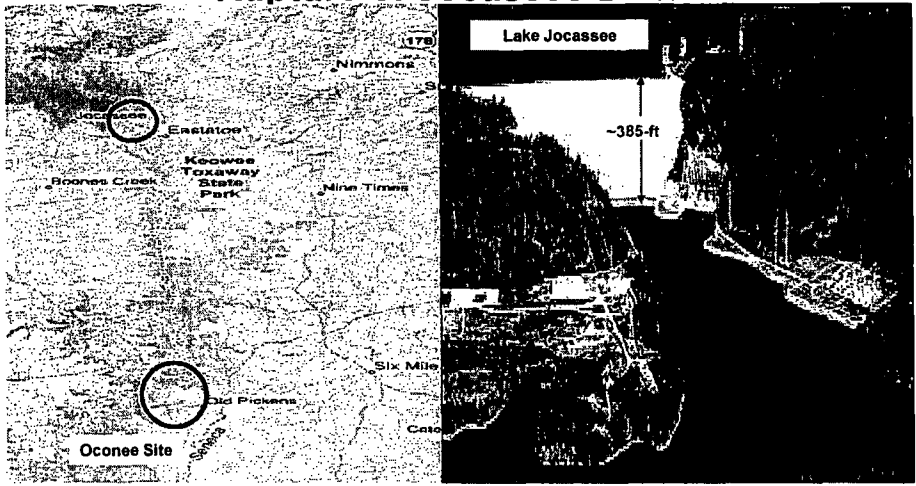


U.S.NRC
NUCLEAR REGULATORY COMMISSION
Protecting People and the Environment

Official Use Only - Sensitive Internal Information

The Flood Scenario Rupture of Jocassee Dam



The figure consists of two parts. On the left is a topographic map of the Jocassee Dam area. It shows the dam's location, labeled 'Jocassee Dam', and the 'Oconee Site' to the south. Other geographical features include 'Keowee Toxaway State Park', 'Roopers Creek', 'Nimmons', 'Mine Timms', 'Six Mile', and 'Case'. Two circular callouts on the map indicate specific areas of interest. On the right is an aerial photograph of Lake Jocassee, showing the dam structure and the reservoir. A vertical scale bar indicates a height of '-385-ft'.

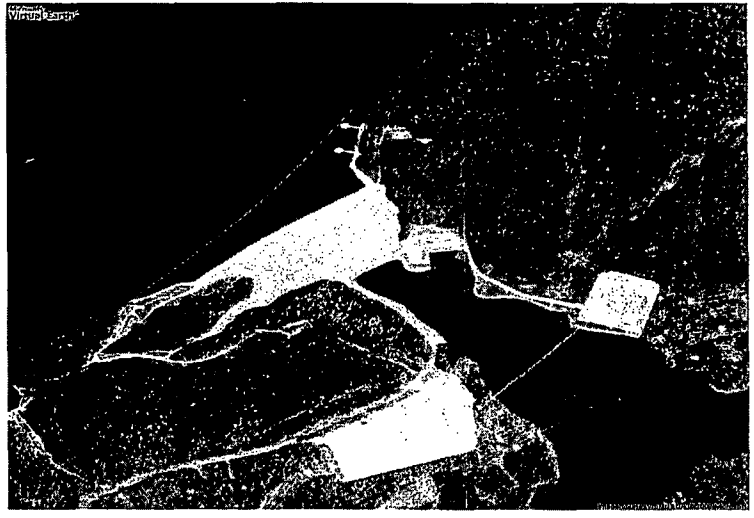
Official Use Only - Sensitive Internal Information

1

U.S.NRC
NUCLEAR REGULATORY COMMISSION
Protecting People and the Environment

Official Use Only - Sensitive Internal Information

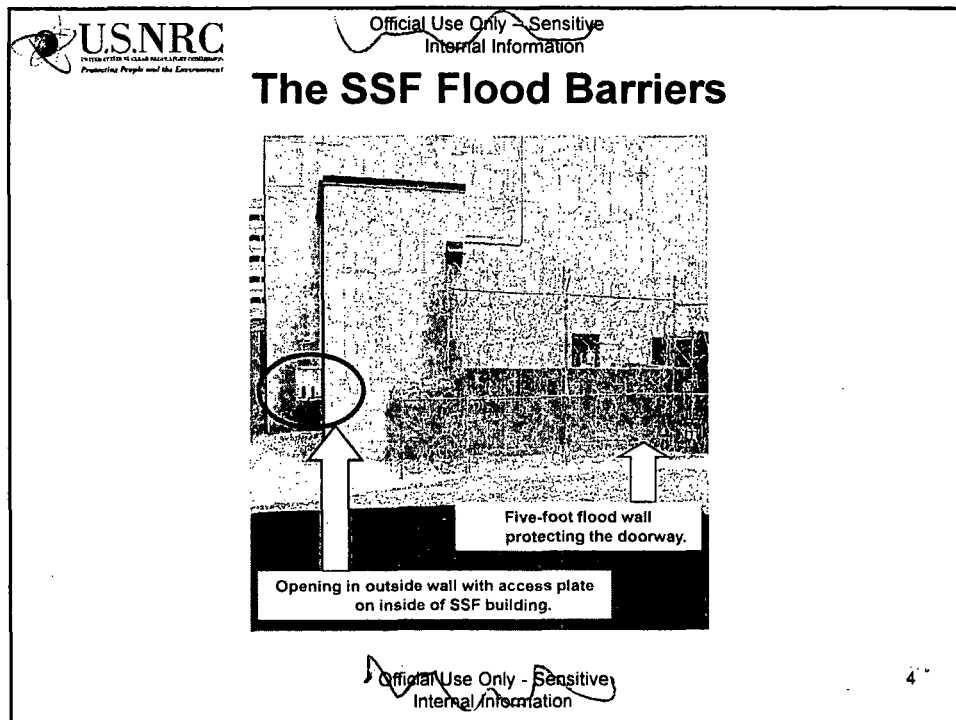
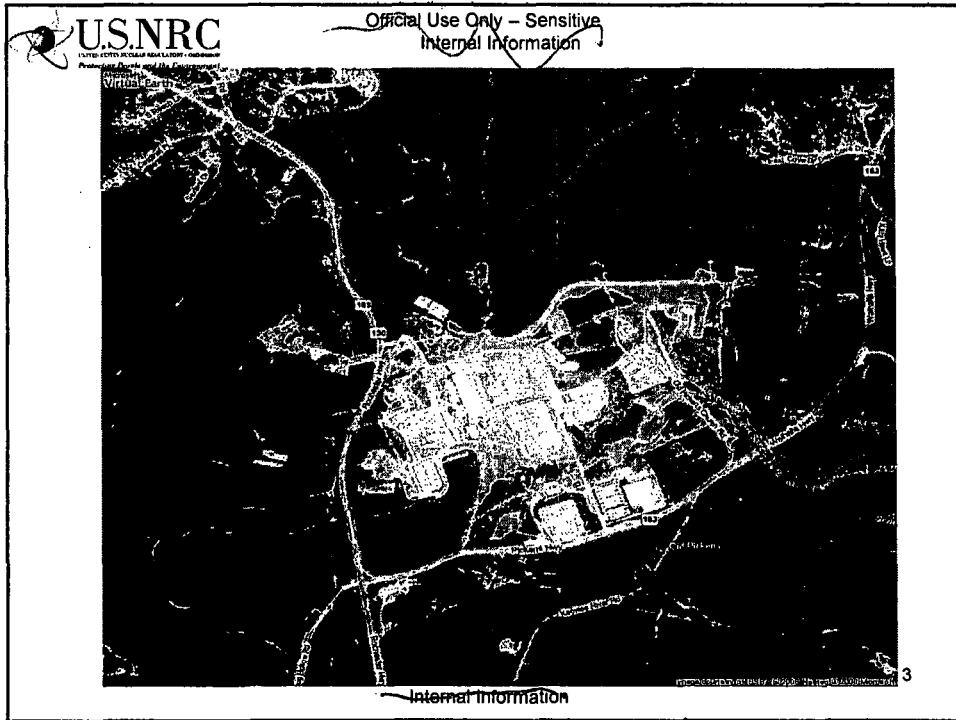
Jocassee Dam Aerial



This is an aerial photograph of the Jocassee Dam. The dam is a large concrete structure with a spillway. The reservoir is visible to the left of the dam. The surrounding terrain is rugged and forested.

Official Use Only - Sensitive Internal Information


2



U.S.NRC
UNITED STATES NUCLEAR REGULATORY COMMISSION
Protecting People and the Environment

Official Use Only - Sensitive Internal Information

Taum Sauk Dam Failure in Missouri



USGS UMF 1000


Official Use Only - Sensitive Internal Information

5

U.S.NRC
UNITED STATES NUCLEAR REGULATORY COMMISSION
Protecting People and the Environment

Official Use Only - Sensitive Internal Information

Taum Sauk Dam Failure in Missouri



USGS UMF 1000

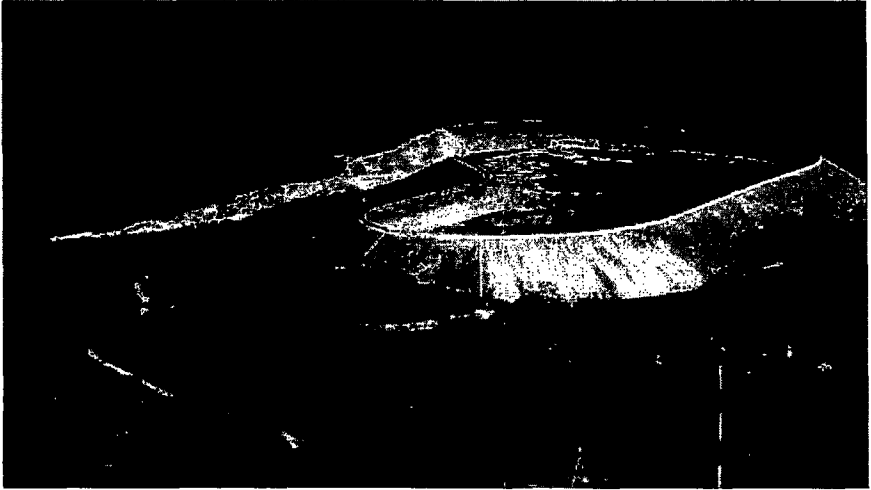
Official Use Only - Sensitive Internal Information

6

USNRC
UNITED STATES NUCLEAR REGULATORY COMMISSION
Protecting People and the Environment

Official Use Only - Sensitive Internal Information

Taum Sauk Dam Failure in Missouri



Official Use Only - Sensitive Internal Information

7