

# Assessment Context

## Workshop on Performance Assessment of Near-Surface Disposal Facilities

Christopher McKenney, Chief,  
Performance Assessment Branch



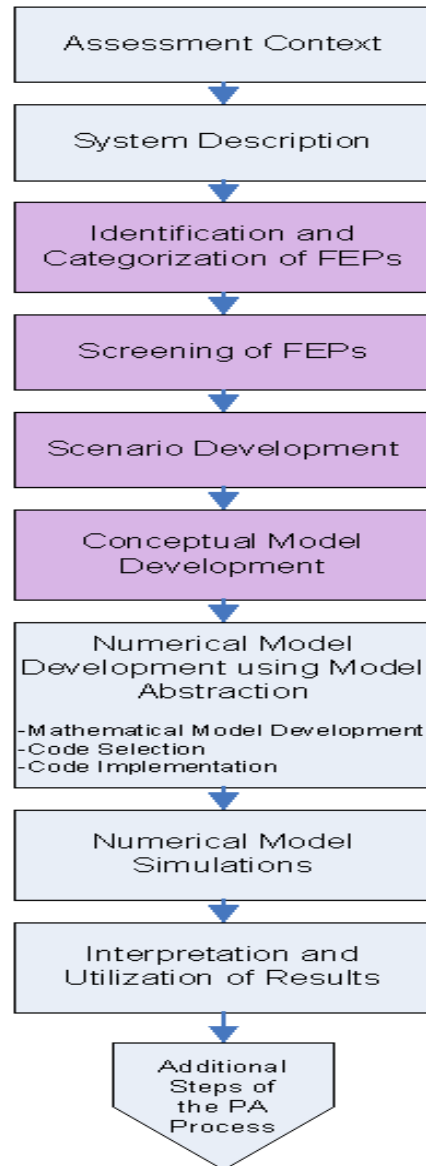
# Answering the Questions

- What is being assessed?
- Why is it being assessed?
- What is the scope of the assessment?



# PA Methodology

## Initial Steps of the Performance Assessment Process



# Components of an Assessment Context

- Purpose of the assessment
- Regulatory framework
- Assessment end points
- Assessment philosophy
- Waste characteristics
- Disposal system characteristics
- Assessment timeframes



# Benefits of a Well-Defined Assessment Context

- Clearly describes scope of this assessment
- Can be used to screen components of the analysis
  - Feature, Events, and Processes
  - Computational methods
  - Data and code needs
- Provides a comparison point with other assessments



# Workshop's Assumption

- An assessment context has been developed
- There are satisfactorily clear descriptions of each of the components
- A single safety case may require several different assessments (and assessment contexts)



# Further Information

- IAEA report on Safety Assessment Methodologies for Near Surface Disposal Facilities (2004)

[http://www-pub.iaea.org/MTCD/publications/PDF/ISAM/IAEA-ISAM-Vol1\\_web.pdf](http://www-pub.iaea.org/MTCD/publications/PDF/ISAM/IAEA-ISAM-Vol1_web.pdf)

[http://www-pub.iaea.org/MTCD/publications/PDF/ISAM/IAEA-ISAM-Vol2\\_web.pdf](http://www-pub.iaea.org/MTCD/publications/PDF/ISAM/IAEA-ISAM-Vol2_web.pdf)

- Phil Metcalf's (IAEA) ANSN training course on Assessment Context (2007)

<http://www.ansn.org/ansn.org/Common/Documents/apmd/asia280p3.pdf>

