

Figure 2.5-54— {Contour Map of Interpreted Top of Competent Shale Based on Geophysical Data}

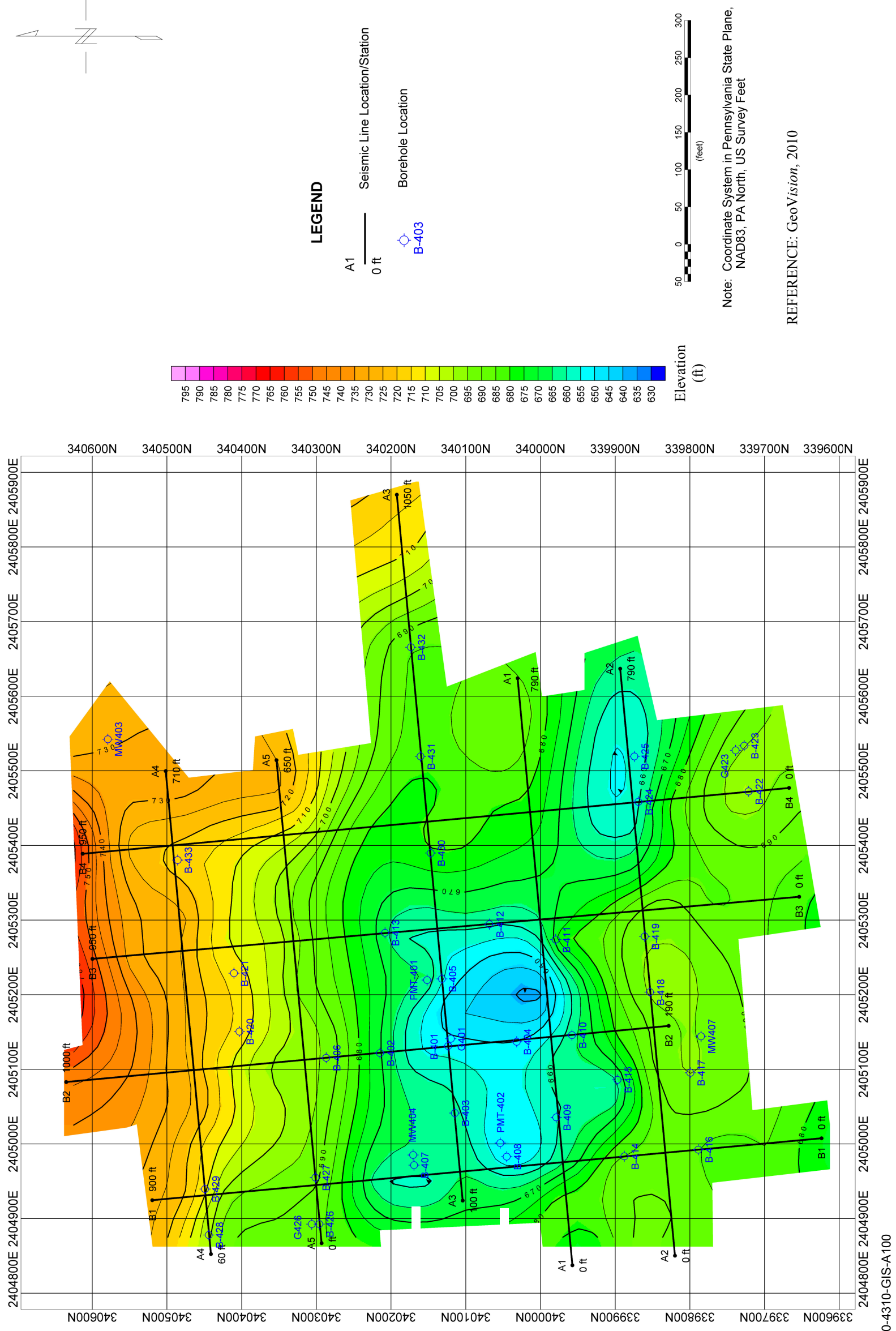


Figure 2.5-55 — {Contour Map of Interpreted Top of Decomposed Shale Based on Geophysical Data}

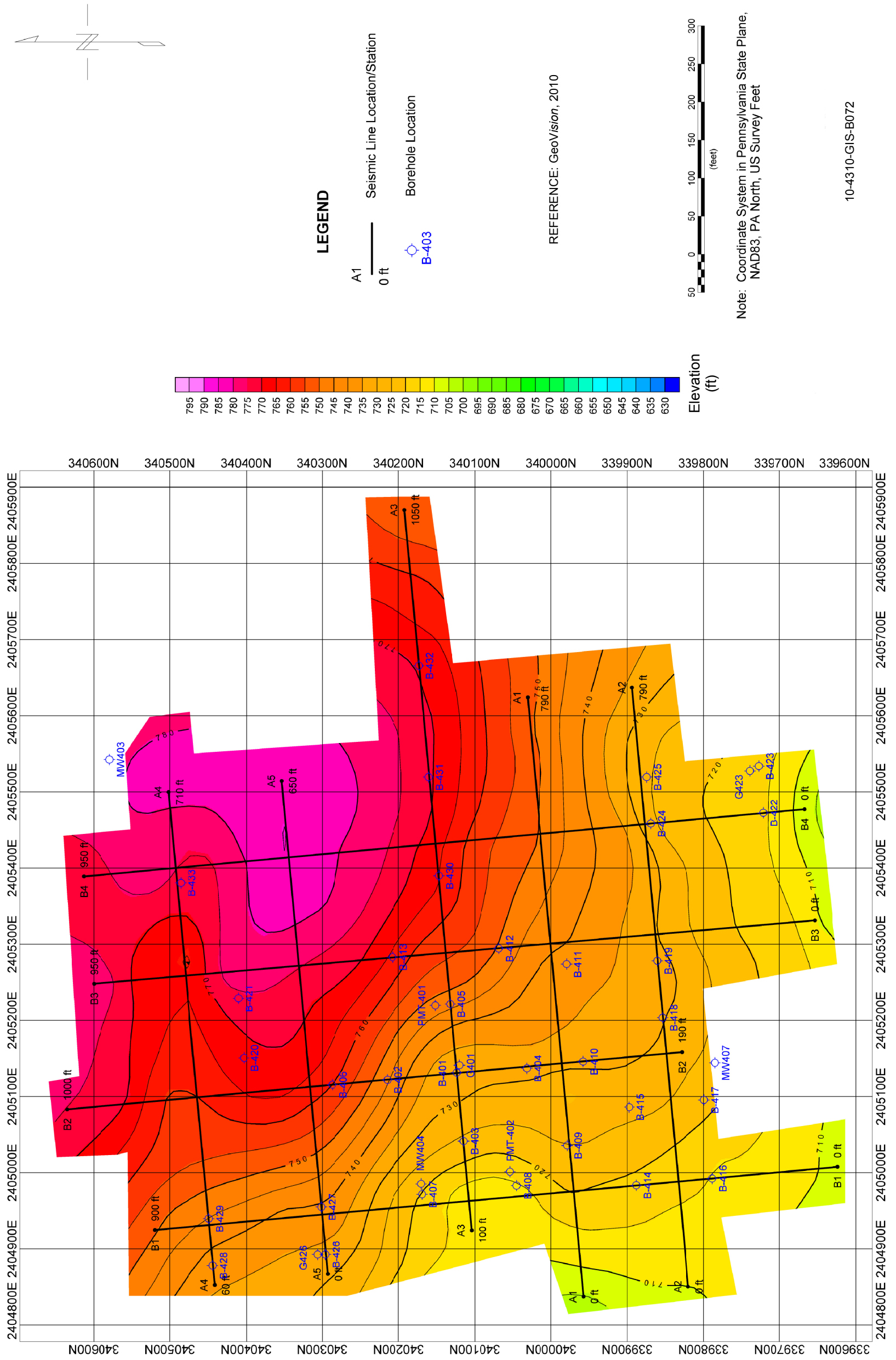




Figure 2.5-56— {Contour Map of Interpreted Top of Weathered Shale Based on Geophysical Data}

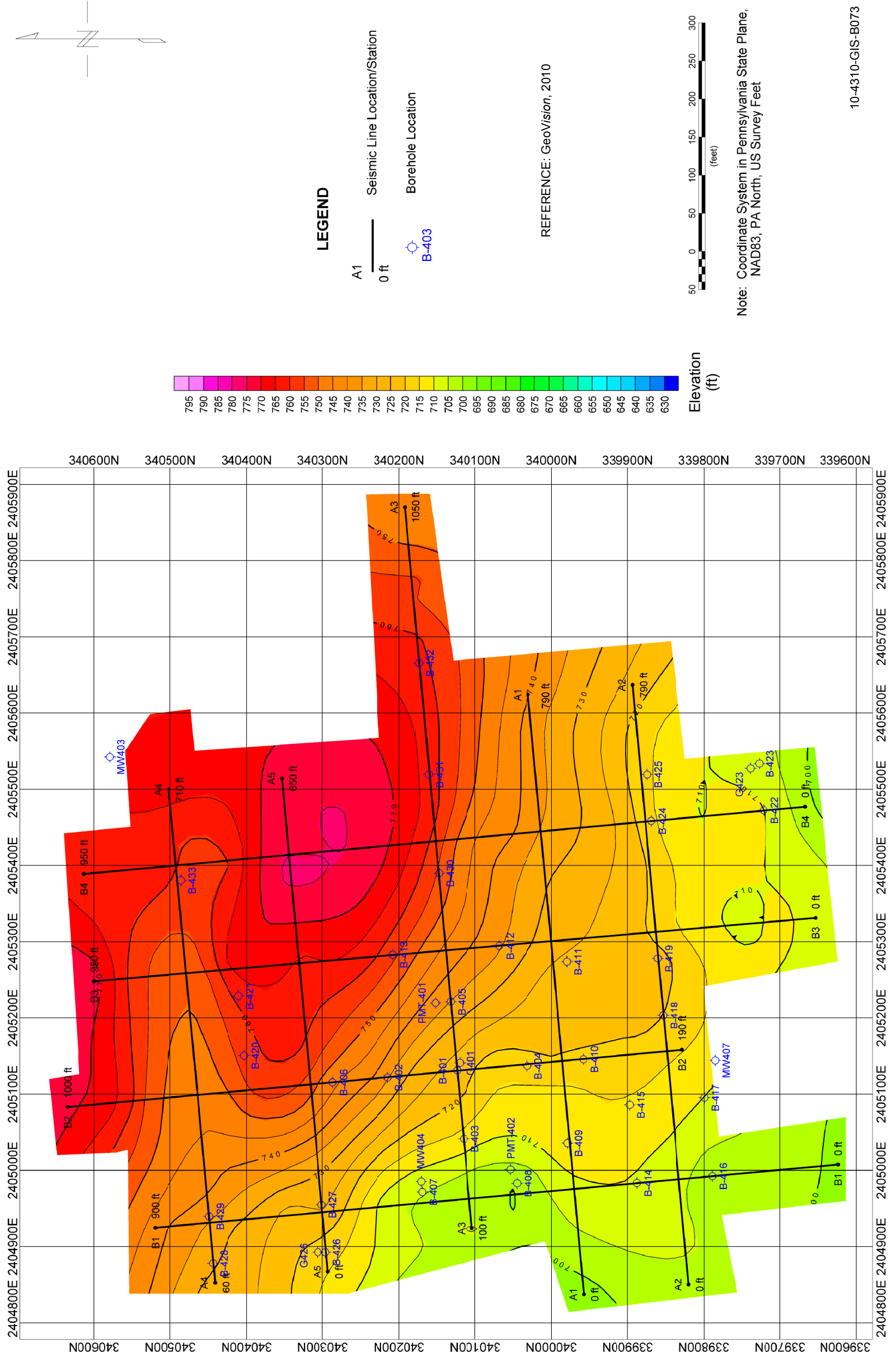
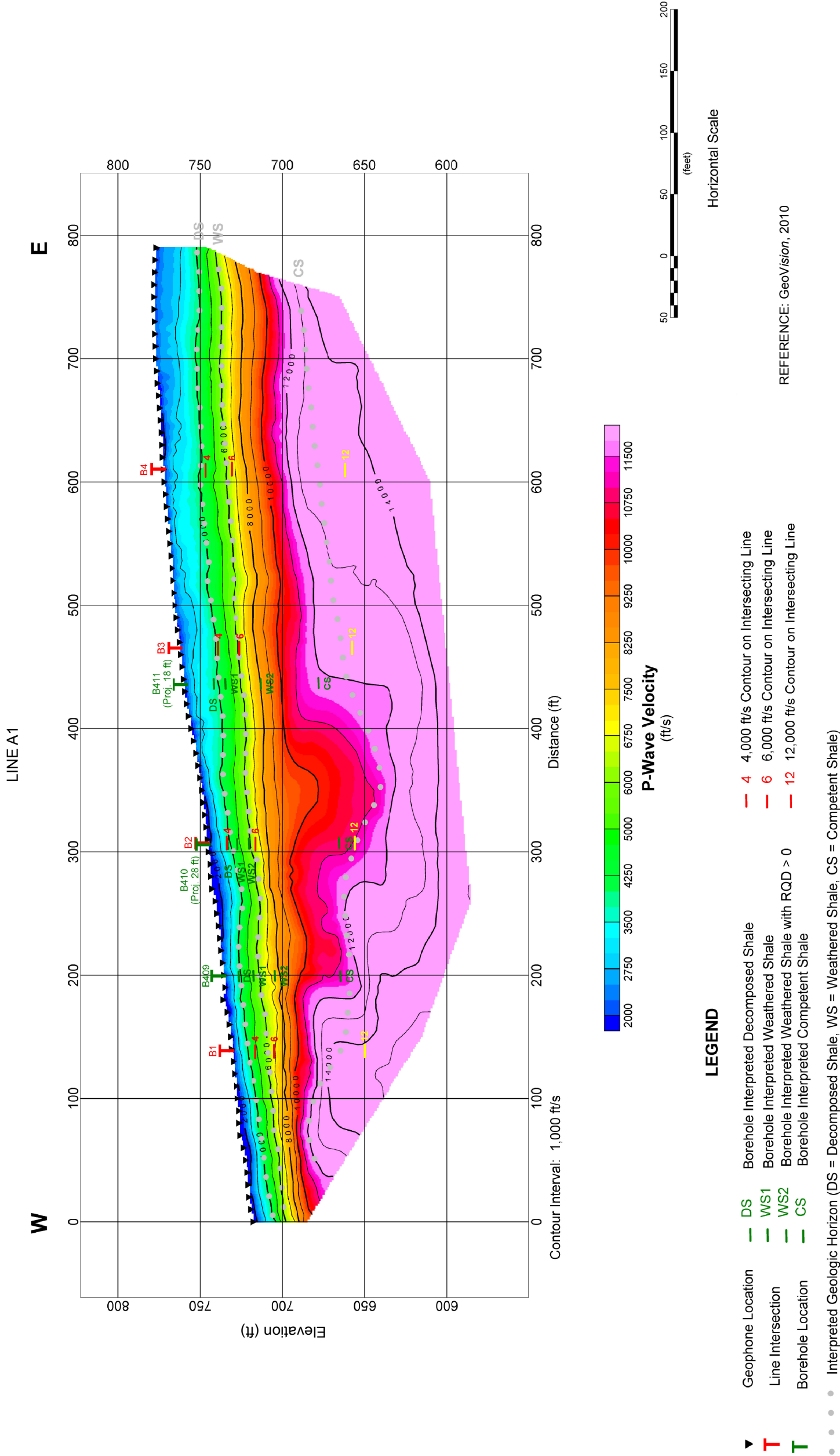


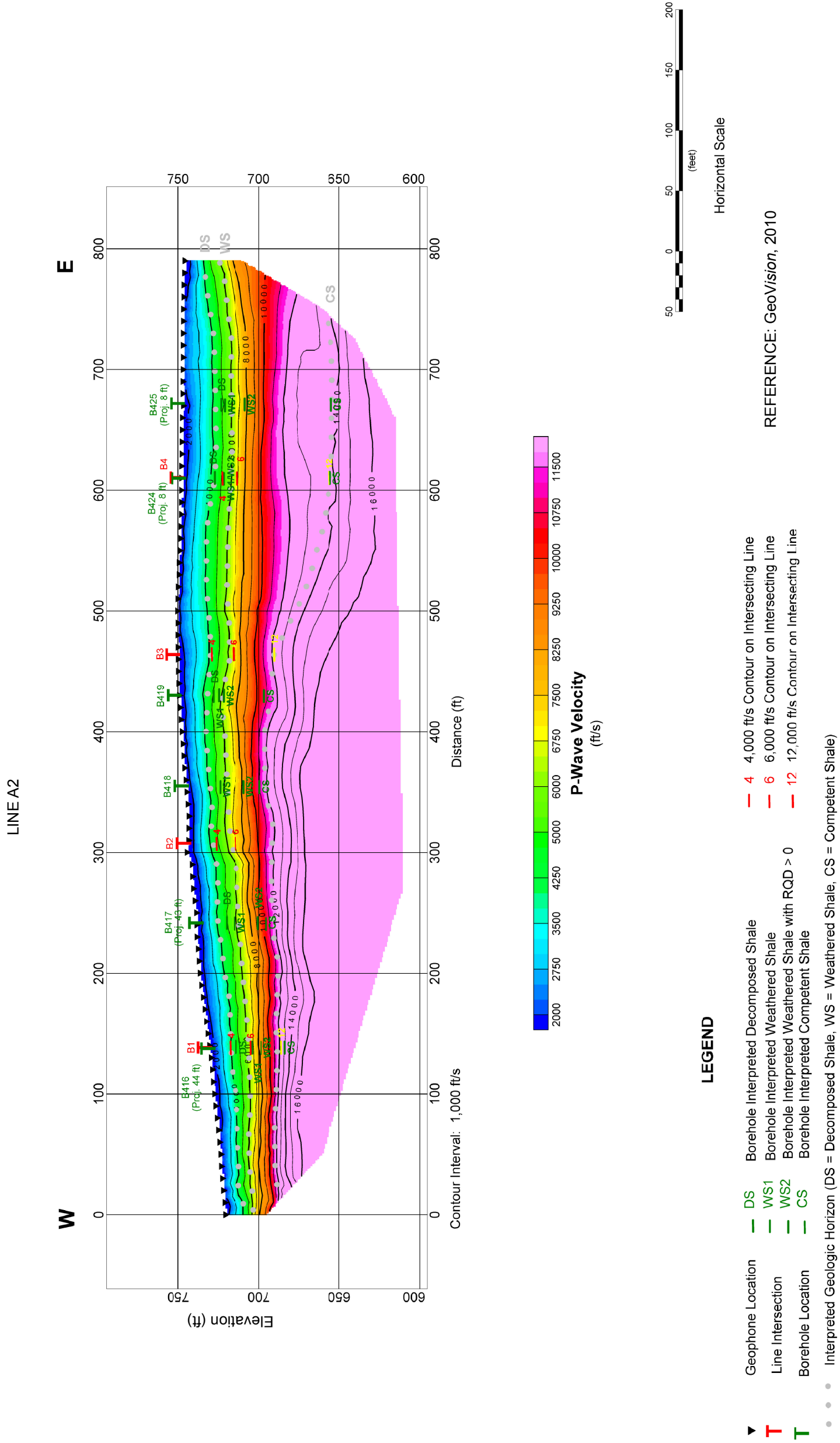
Figure 2.5-57 — {Seismic Tomography Profile Line A1}



Note: Borehole intersections are marked with projected distances if greater than 5 ft from the line. All projected distances are rounded to the nearest foot.

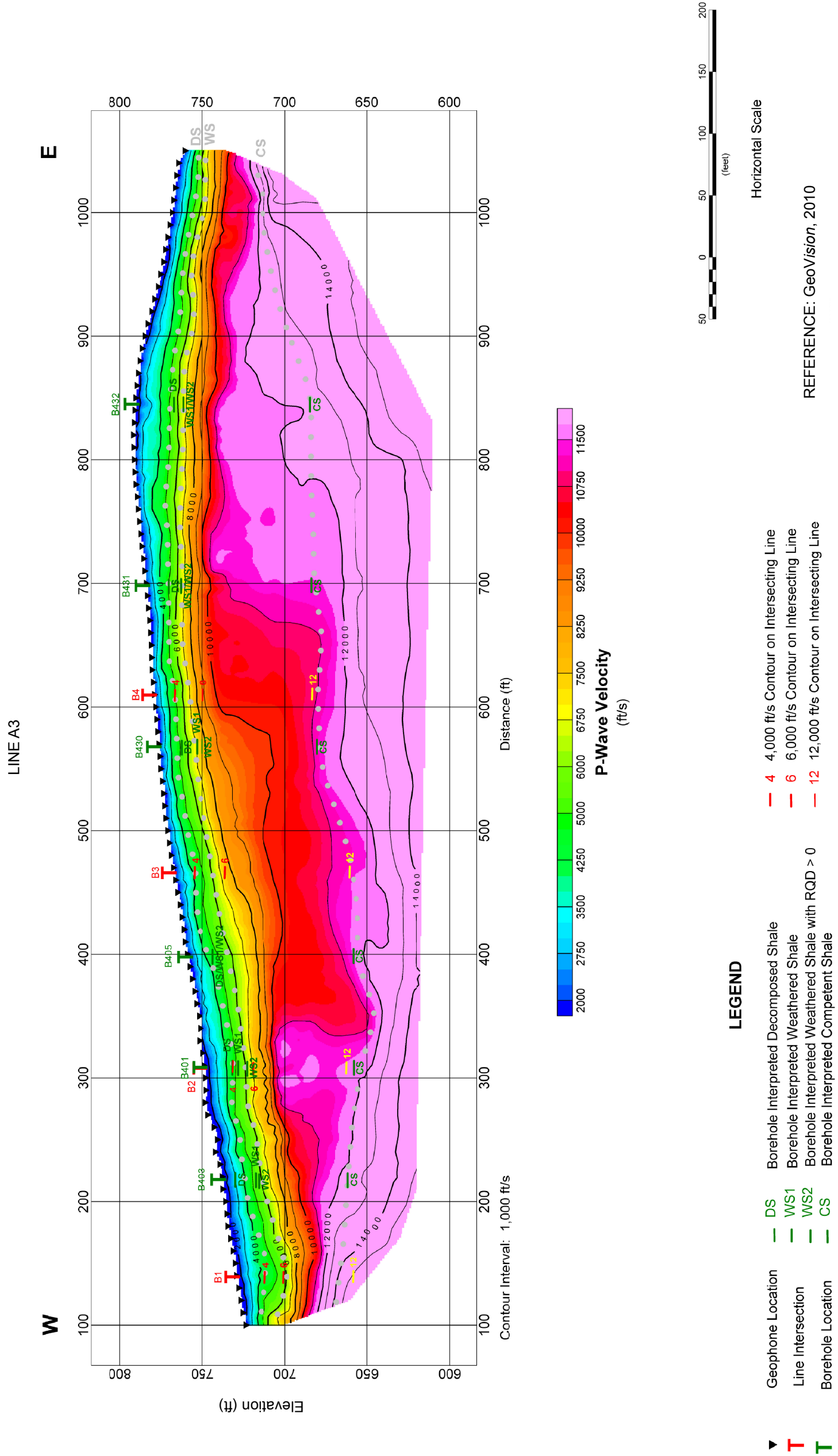
10-4310-GIS-B063

Figure 2.5-58— {Seismic Tomography Profile Line A2}



Note: Borehole intersections are marked with projected distances if greater than 5 ft from the line. All projected distances are rounded to the nearest foot.

Figure 2.5-59— {Seismic Tomography Profile Line A3}

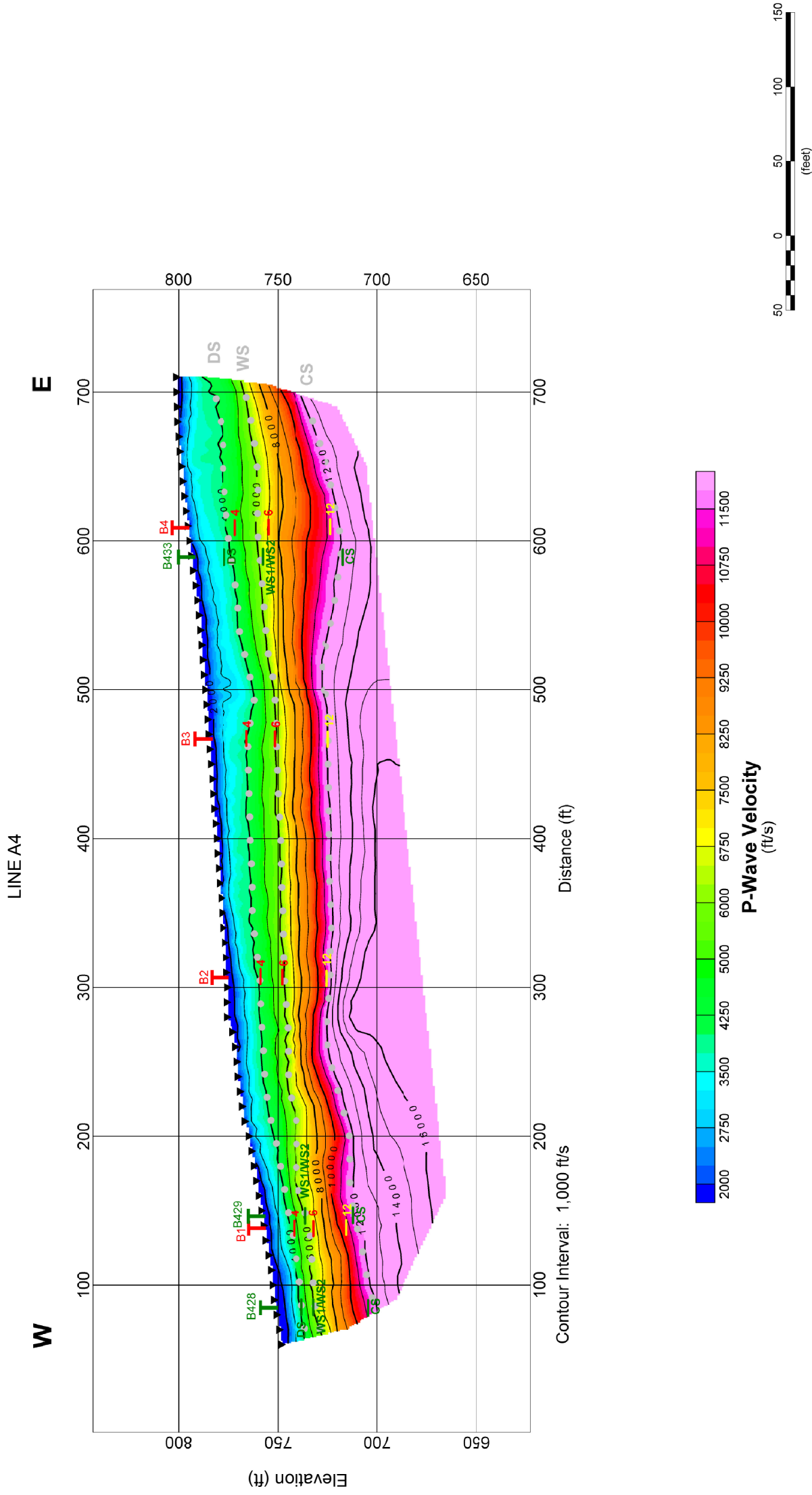


10-4310-GIS-B065

Note: Borehole intersections are marked with projected distances if greater than 5 ft from the line. All projected distances are rounded to the nearest foot.



Figure 2.5-60— {Seismic Tomography Profile Line A4}



**LEGEND**

- ▼ Geophone Location
- DS Borehole Interpreted Decomposed Shale
- WS1 Borehole Interpreted Weathered Shale
- WS2 Borehole Interpreted Weathered Shale with RQD > 0
- CS Borehole Interpreted Competent Shale
- Interpreted Geologic Horizon (DS = Decomposed Shale, WS = Weathered Shale, CS = Competent Shale)
- 4 4,000 ft/s Contour on Intersecting Line
- 6 6,000 ft/s Contour on Intersecting Line
- 12 12,000 ft/s Contour on Intersecting Line

REFERENCE: GeoVision, 2010

Note: Borehole intersections are marked with projected distances if greater than 5 ft from the line. All projected distances are rounded to the nearest foot.

10-4310-GIS-B066

Figure 2.5-61 — {Seismic Tomography Profile Line A5}

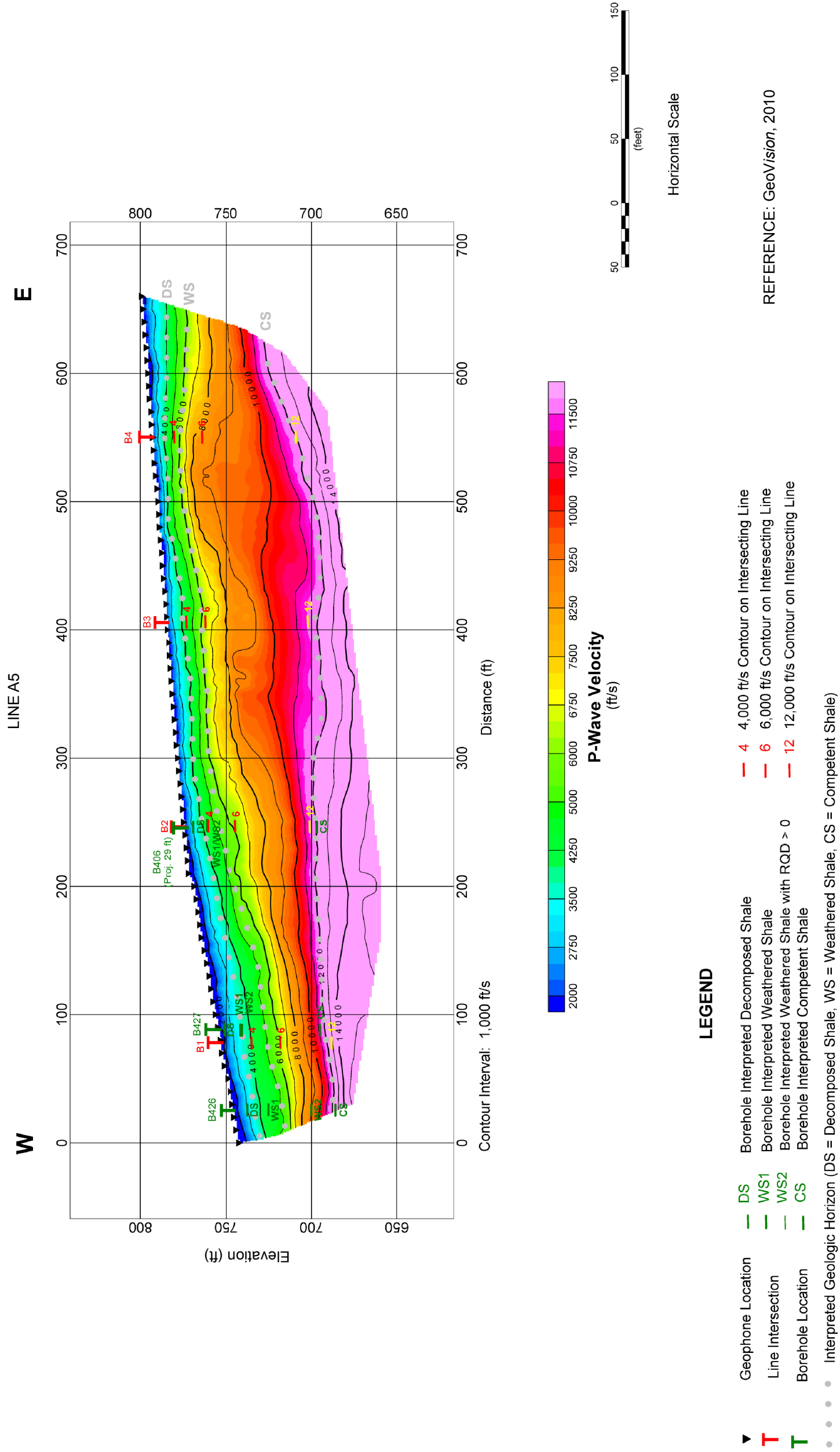
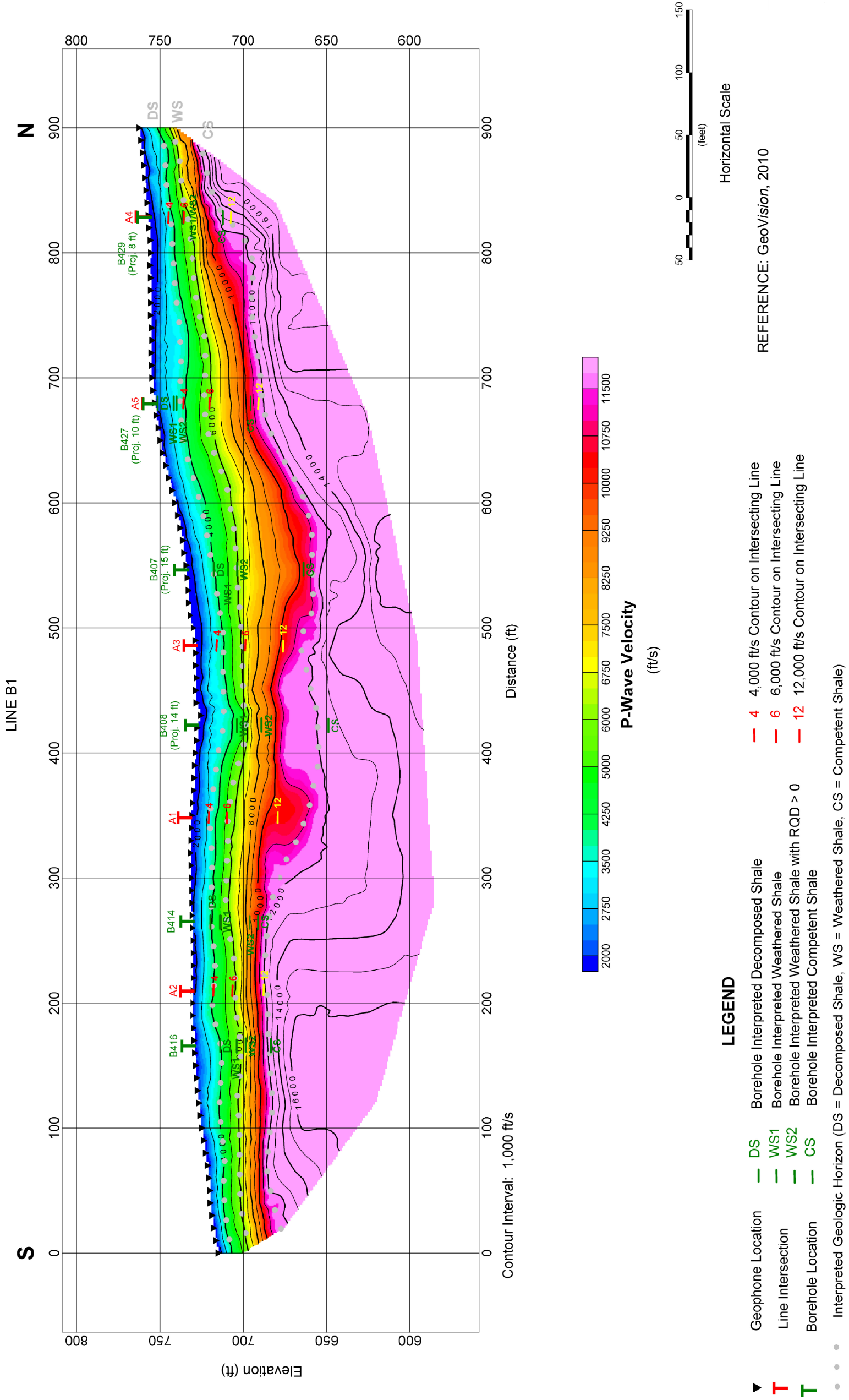


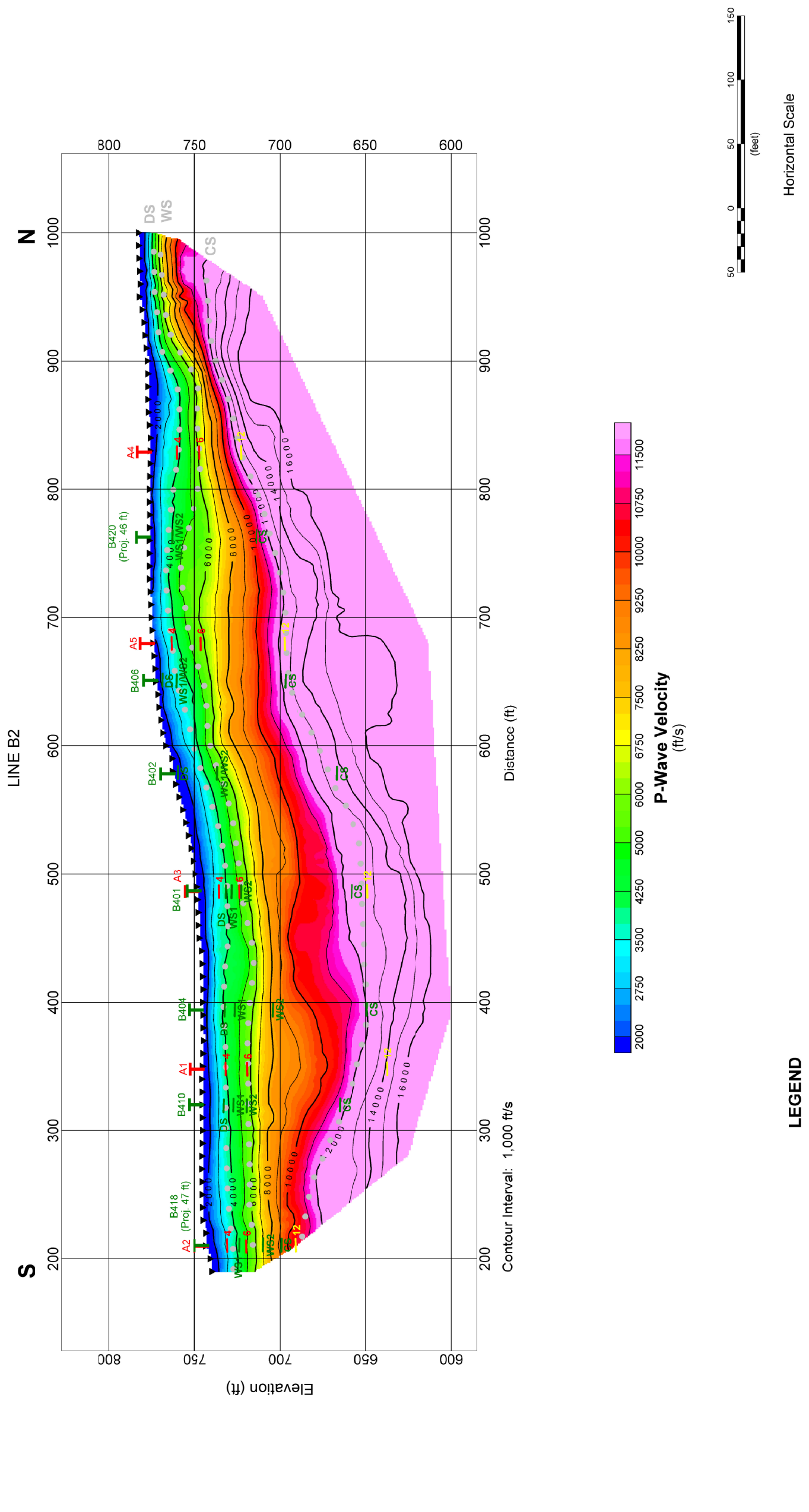
Figure 2.5-62— {Seismic Tomography Profile Line B1}



Note: Borehole intersections are marked with projected distances if greater than 5 ft from the line. All projected distances are rounded to the nearest foot.

10-4310-GIS-B068

Figure 2.5-63— {Seismic Tomography Profile Line B2}



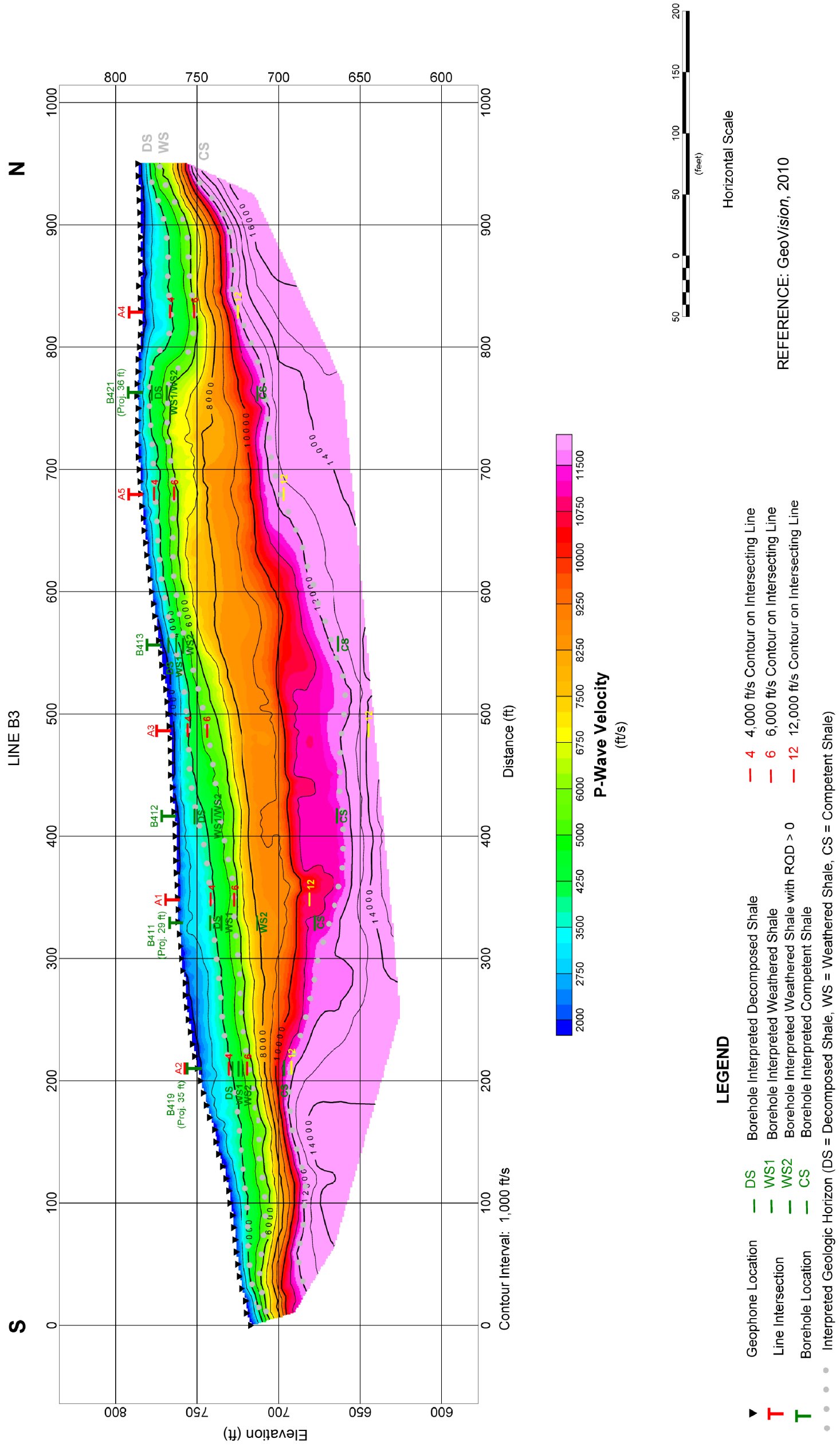
- LEGEND**
- ▼ Geophone Location
  - ▲ Borehole Location
  - DS Borehole Interpreted Decomposed Shale
  - WS1 Borehole Interpreted Weathered Shale
  - WS2 Borehole Interpreted Weathered Shale with RQD > 0
  - CS Borehole Interpreted Competent Shale
  - Interpreted Geologic Horizon (DS = Decomposed Shale, WS = Weathered Shale, CS = Competent Shale)
  - 4 4,000 ft/s Contour on Intersecting Line
  - 6 6,000 ft/s Contour on Intersecting Line
  - 12 12,000 ft/s Contour on Intersecting Line
- REFERENCE: GeoVision, 2010

Note: Borehole intersections are marked with projected distances if greater than 5 ft from the line. All projected distances are rounded to the nearest foot.

10-4310-GIS-B069



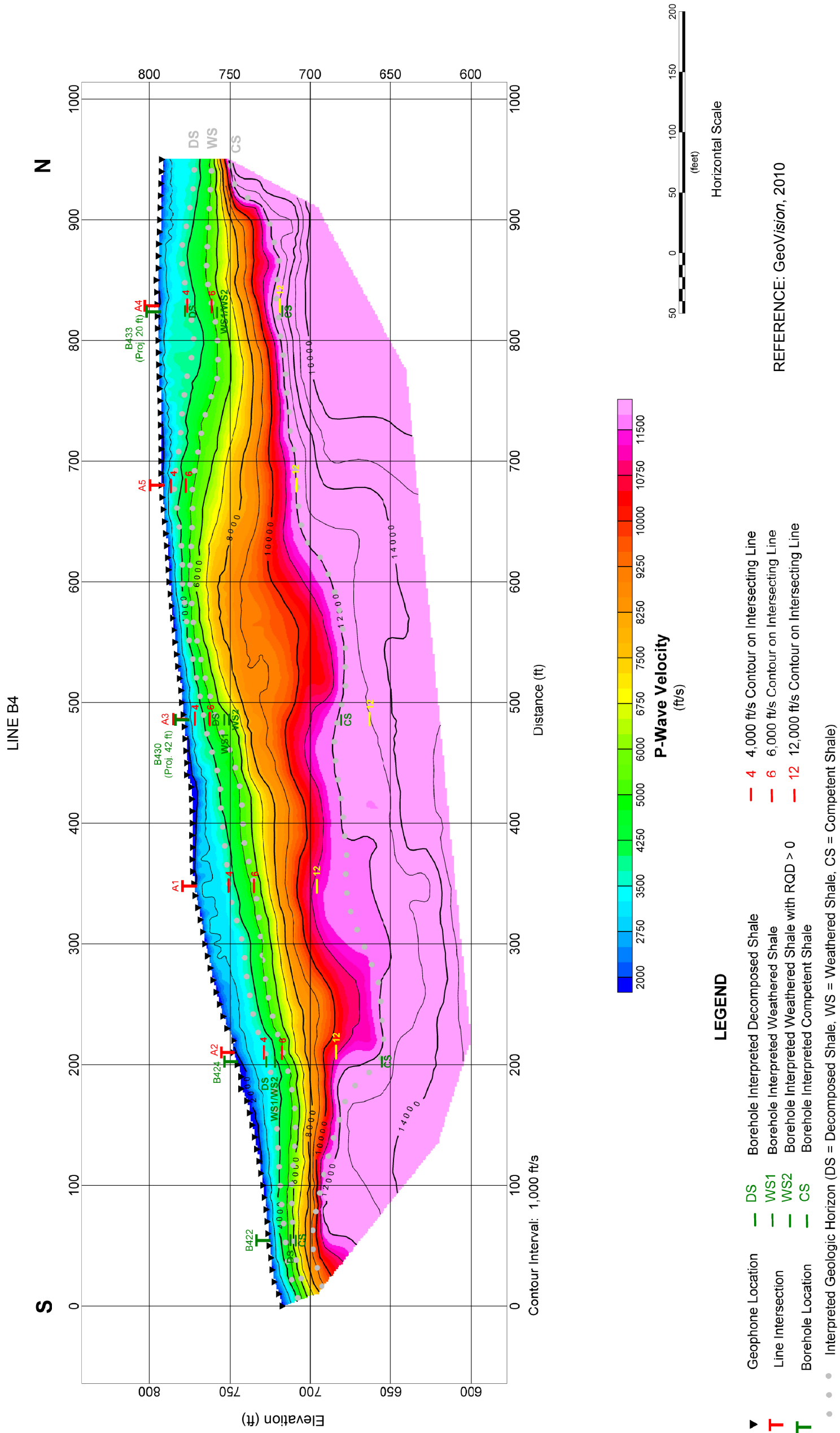
Figure 2.5-64— {Seismic Tomography Profile Line B3}



Note: Borehole intersections are marked with projected distances if greater than 5 ft from the line. All projected distances are rounded to the nearest foot.

10-4310-GIS-B070

Figure 2.5-65— {Seismic Tomography Profile Line B4}



Note: Borehole intersections are marked with projected distances if greater than 5 ft from the line. All projected distances are rounded to the nearest foot.





**Figure 2.5-67 — {Northwestward View of Syber Creek, with no Evidence of the Light Street Fault}**



10-4310-GIS-A148



**Figure 2.5-68— {View South Along Stone Church Road at Syber Creek, with no Expression of the Light Street Fault}**



10-4310-GIS-A-147

Figure 2.5-69—{Rocky Bed of the Susquehanna River at the Berwick Bridge}



10-43 10-GIS-A146



**Figure 2.5-70— {Gravelly Deposits along Hunlock Creek, a Tributary to the Susquehanna}**



10-4310-GIS-A145



**Figure 2.5-71 — {Exposure of Soft Sediments on the East Bank of the Susquehanna River}**



10-4310-GS-A141



Figure 2.5-72— {Exposure of Man-made Fill on the Susquehanna River}



10-4310-GIS-A137



Figure 2.5-73— {Shale Outcrop at the Site with Steep SSE Dipping Cleavage}



10-4310-GIS-A136



**Figure 2.5-74— {Shale in Borrow Areas Overlain by Glacial Till Showing No Offset of Contact}**



10-4310-GIS-A150



Figure 2.5-75— {Continuous Contact Between Glacial Till and Top of Shale Bedrock}



10-4310-GIS-A144