

Status: Y N U

Seismic Walkdown Checklist (SWC)

Equipment ID No. 2-1217-84-00 Equip. Class¹² 21

Equipment Description ACCW HEAT EXCHANGER

Location: Bldg. 4X Floor El. 220' Room, Area R153

Manufacturer, Model, Etc. (optional but recommended) _____

Instructions for Completing Checklist

This checklist may be used to document the results of the Seismic Walkdown of an item of equipment on the SWEL. The space below each of the following questions may be used to record the results of judgments and findings. Additional space is provided at the end of this checklist for documenting other comments.

Anchorage

1. Is the anchorage configuration verification required (i.e., is the item one of the 50% of SWEL items requiring such verification)? Y N U

2. Is the anchorage free of bent, broken, missing or loose hardware? Y N U N/A

3. Is the anchorage free of corrosion that is more than mild surface oxidation? Y N U N/A

4. Is the anchorage free of visible cracks in the concrete near the anchors? Y N U N/A

5. Is the anchorage configuration consistent with plant documentation? (Note: This question only applies if the item is one of the 50% for which an anchorage configuration verification is required.) Y N U N/A

6. Based on the above anchorage evaluations, is the anchorage free of potentially adverse seismic conditions? Y N U

AXZD08A10Z

¹² Enter the equipment class name from Appendix B: Classes of Equipment.

Seismic Walkdown Checklist (SWC)

Equipment ID No. Z-1217-EA-001 Equip. Class¹² 21

Equipment Description ACCW HEAT EXCHANGER

Interaction Effects

7. Are soft targets free from impact by nearby equipment or structures? Y N U N/A

8. Are overhead equipment, distribution systems, ceiling tiles and lighting, and masonry block walls not likely to collapse onto the equipment? Y N U N/A

9. Do attached lines have adequate flexibility to avoid damage? Y N U N/A

10. Based on the above seismic interaction evaluations, is equipment free of potentially adverse seismic interaction effects? Y N U

Other Adverse Conditions

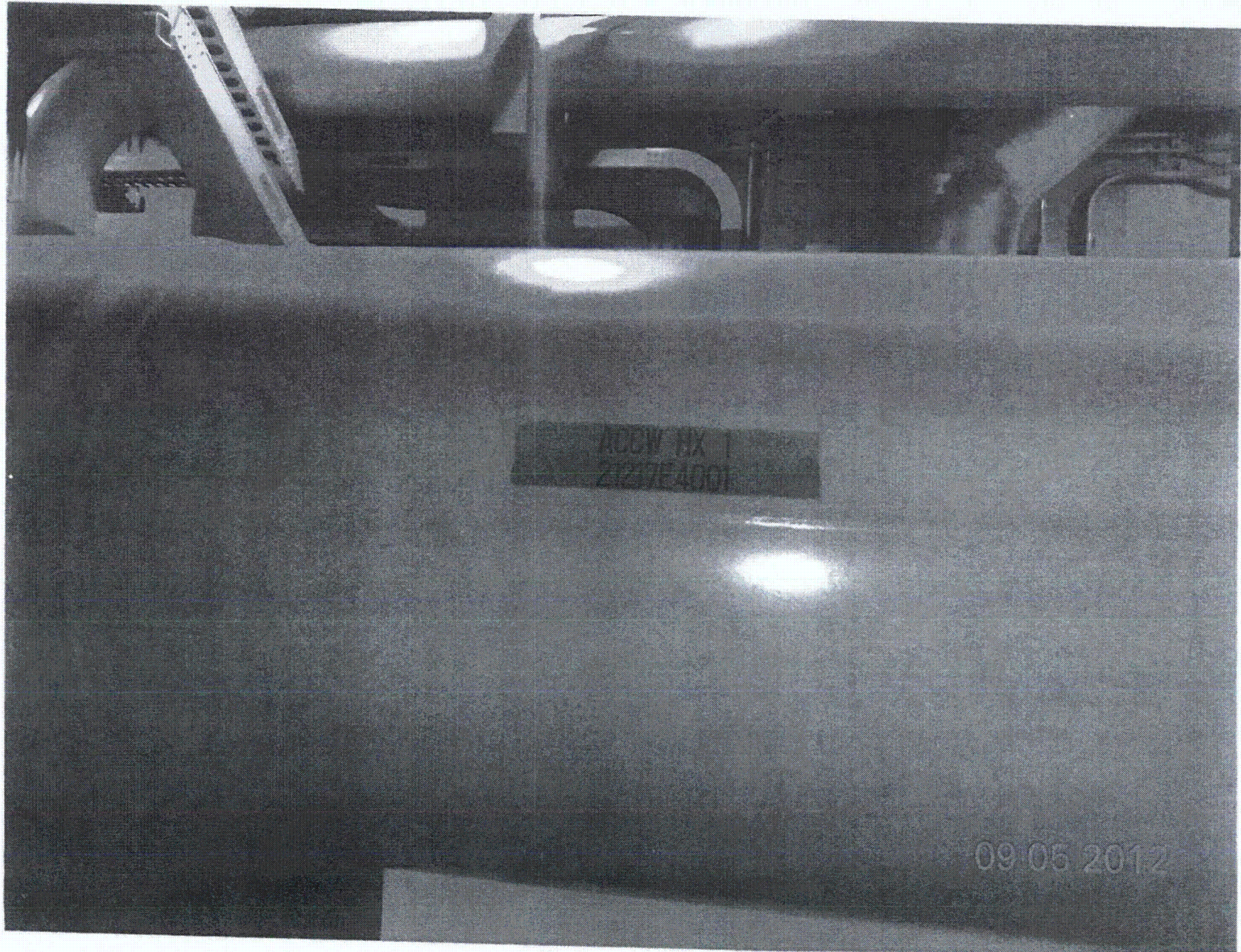
11. Have you looked for and found no other seismic conditions that could adversely affect the safety functions of the equipment? Y N U

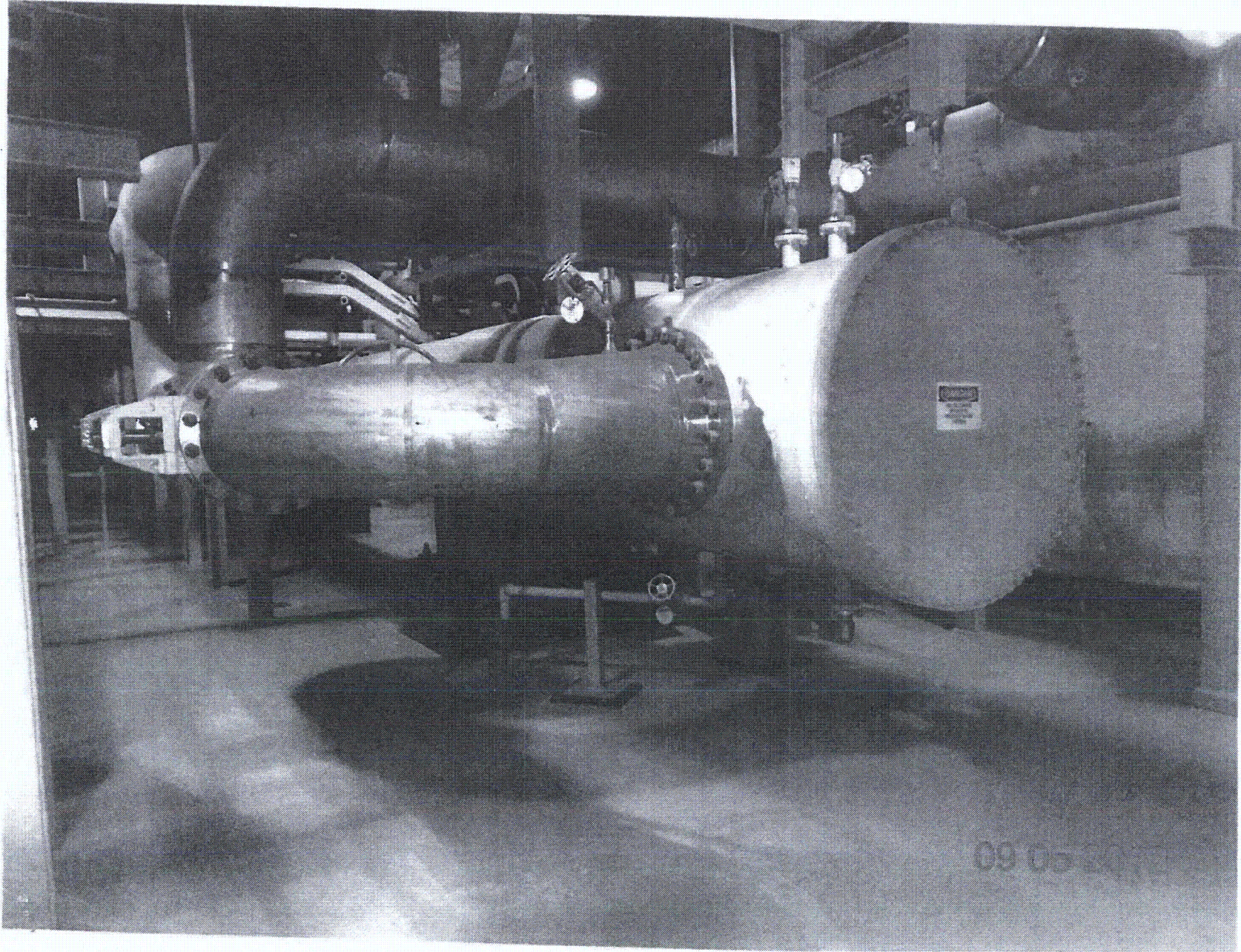
Comments (Additional pages may be added as necessary)

None

Evaluated by: James Dard / JAMES DOVER Date: 9-5-2012

Wt St / Winston Stewart 09/05/2012





Sheet 1 of 2
 Status: Y N U

Seismic Walkdown Checklist (SWC)

Equipment ID No. 2-1302-P4-002 Equip. Class¹² 5

Equipment Description AFW Pump Motor Driven

Location: Bldg. Aex F Pump Floor El. 215' Room, Area 102

Manufacturer, Model, Etc. (optional but recommended) _____

Instructions for Completing Checklist

This checklist may be used to document the results of the Seismic Walkdown of an item of equipment on the SWEL. The space below each of the following questions may be used to record the results of judgments and findings. Additional space is provided at the end of this checklist for documenting other comments.

Anchorage

1. Is the anchorage configuration verification required (i.e., is the item one of the 50% of SWEL items requiring such verification)? Y N U

2. Is the anchorage free of bent, broken, missing or loose hardware? Y N U N/A

3. Is the anchorage free of corrosion that is more than mild surface oxidation? Y N U N/A

4. Is the anchorage free of visible cracks in the concrete near the anchors? Y N U N/A

5. Is the anchorage configuration consistent with plant documentation? Y N U N/A
 (Note: This question only applies if the item is one of the 50% for which an anchorage configuration verification is required.)

Dwg 2X4AF03-20042 Ver. 1.0

6. Based on the above anchorage evaluations, is the anchorage free of potentially adverse seismic conditions? Y N U

¹² Enter the equipment class name from Appendix B: Classes of Equipment.

Seismic Walkdown Checklist (SWC)

Equipment ID No. 2-1302-P4-002 Equip. Class¹² 5

Equipment Description AFN Pump motor Driven

Interaction Effects

8-13-2012 DV
7. Are soft targets free from impact by nearby equipment or structures? Y N U N/A
USED FOR HOLDING
Bucket held the suspended chain for overhead
monorail is acceptable.

8. Are overhead equipment, distribution systems, ceiling tiles and lighting, and masonry block walls not likely to collapse onto the equipment? Y N U N/A

9. Do attached lines have adequate flexibility to avoid damage? Y N U N/A

10. Based on the above seismic interaction evaluations, is equipment free of potentially adverse seismic interaction effects? Y N U

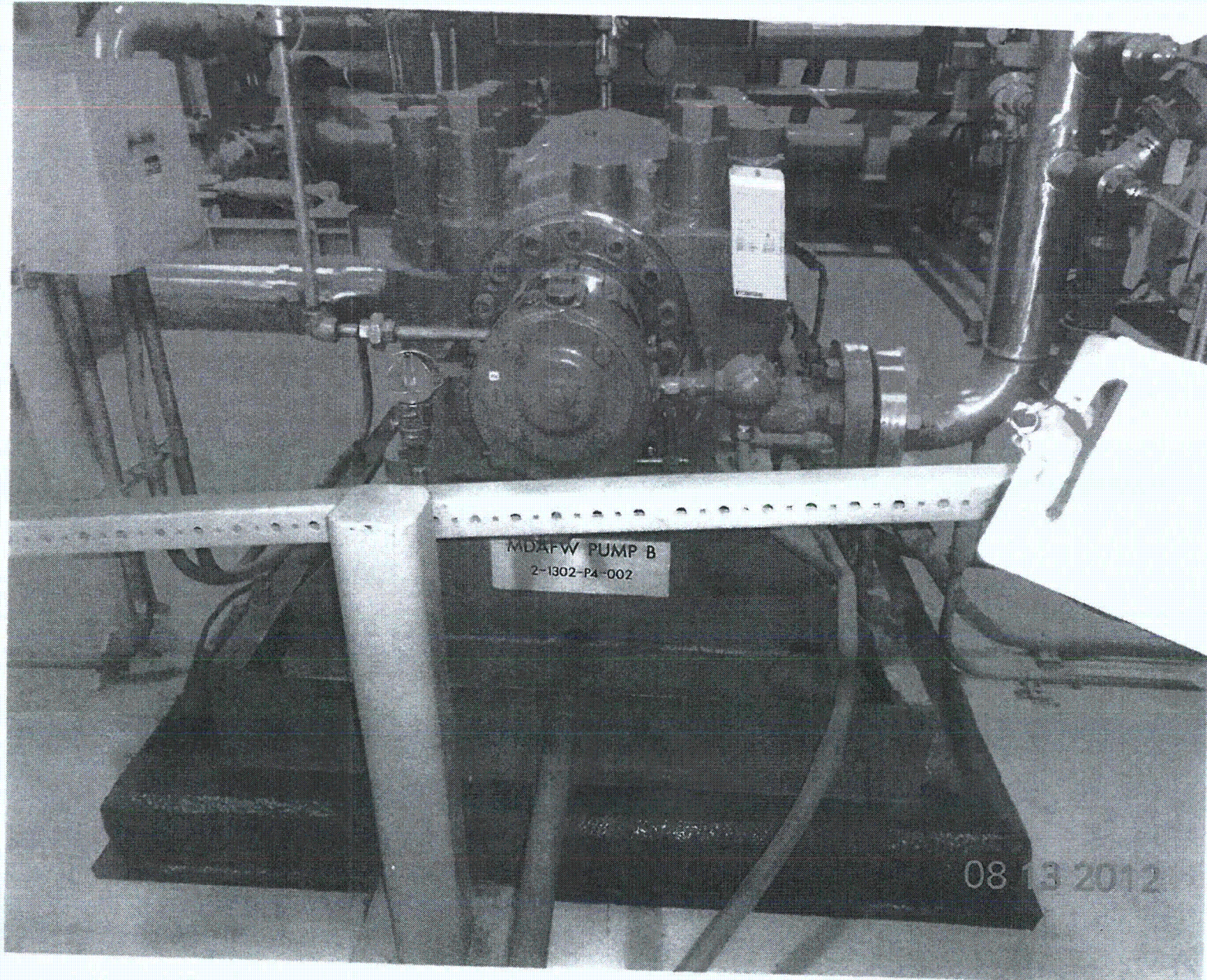
Other Adverse Conditions

11. Have you looked for and found no other seismic conditions that could adversely affect the safety functions of the equipment? Y N U

Comments (Additional pages may be added as necessary)

NONE

Evaluated by: Frank C. Yao / Frank YAO Date: 8/13/2012
David Volodarsky / DAVID VOLODARSKY 8-13-2012



Sheet 1 of 2
Status: Y N U

Seismic Walkdown Checklist (SWC)

Equipment ID No. 2-1302-V_a-001 Equip. Class¹² 21
Equipment Description Condensate Storage Tank No. 1
Location: Bldg. CST No. 1 Floor El. 220' Room, Area Yard
Manufacturer, Model, Etc. (optional but recommended) _____

Instructions for Completing Checklist

This checklist may be used to document the results of the Seismic Walkdown of an item of equipment on the SWEL. The space below each of the following questions may be used to record the results of judgments and findings. Additional space is provided at the end of this checklist for documenting other comments.

Anchorage

1. Is the anchorage configuration verification required (i.e., is the item one of the 50% of SWEL items requiring such verification)? Y N U
2. Is the anchorage free of bent, broken, missing or loose hardware? Y N U N/A
See comment
3. Is the anchorage free of corrosion that is more than mild surface oxidation? Y N U N/A
See comment
4. Is the anchorage free of visible cracks in the concrete near the anchors? Y N U N/A
See comment
5. Is the anchorage configuration consistent with plant documentation? Y N U N/A
(Note: This question only applies if the item is one of the 50% for which an anchorage configuration verification is required.)
See comment
6. Based on the above anchorage evaluations, is the anchorage free of potentially adverse seismic conditions? Y N U

¹² Enter the equipment class name from Appendix B: Classes of Equipment.

Seismic Walkdown Checklist (SWC)

Equipment ID No. 2-1302-V4-001 Equip. Class¹² 21

Equipment Description Condensate Storage Tank No. 1

Interaction Effects

- 7. Are soft targets free from impact by nearby equipment or structures? Y N U N/A

- 8. Are overhead equipment, distribution systems, ceiling tiles and lighting, and masonry block walls not likely to collapse onto the equipment? Y N U N/A
No overhead equipment are over the tank

- 9. Do attached lines have adequate flexibility to avoid damage? Y N U N/A

- 10. Based on the above seismic interaction evaluations, is equipment free of potentially adverse seismic interaction effects? Y N U

Other Adverse Conditions

- 11. Have you looked for and found no other seismic conditions that could adversely affect the safety functions of the equipment? Y N U

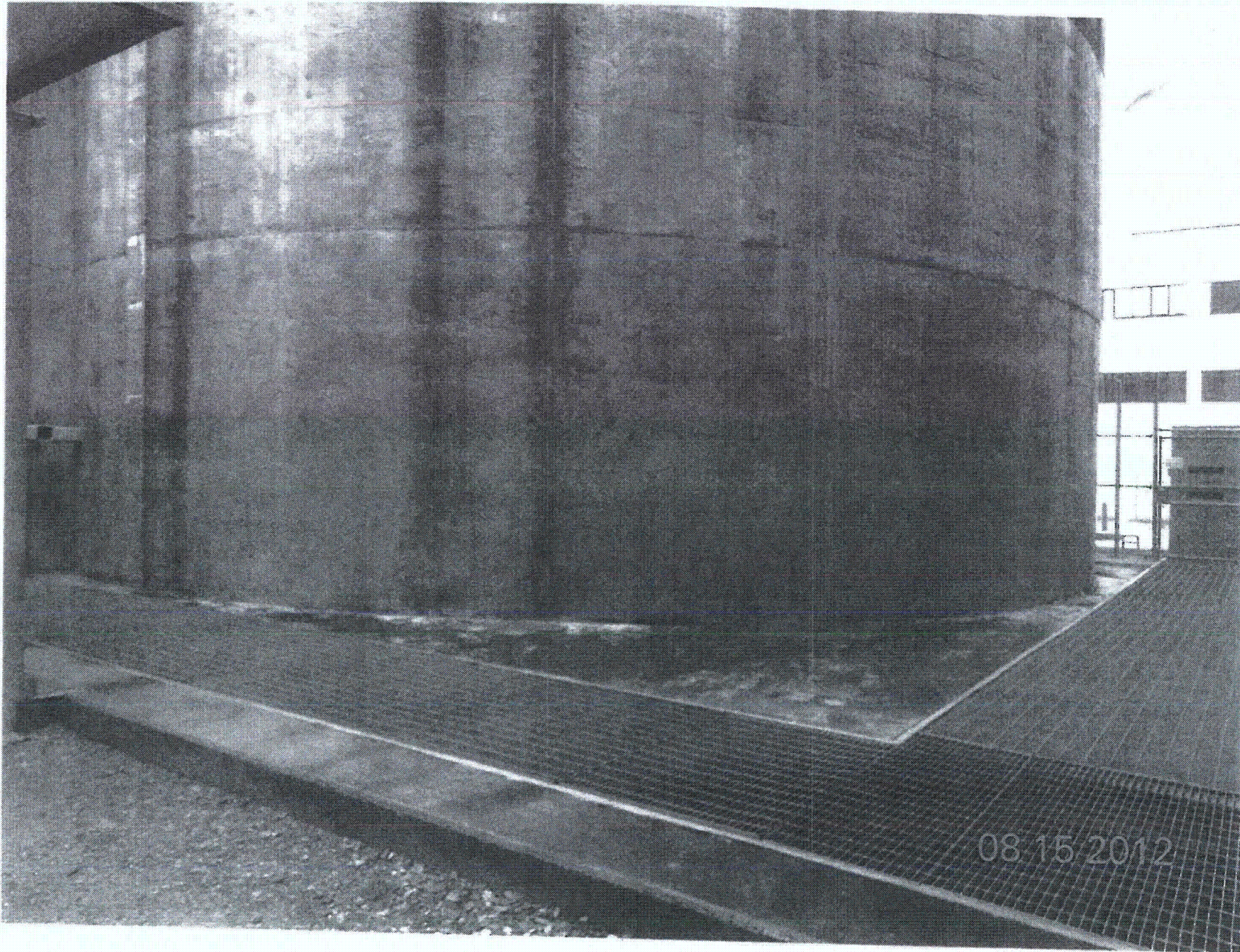
Comments (Additional pages may be added as necessary)

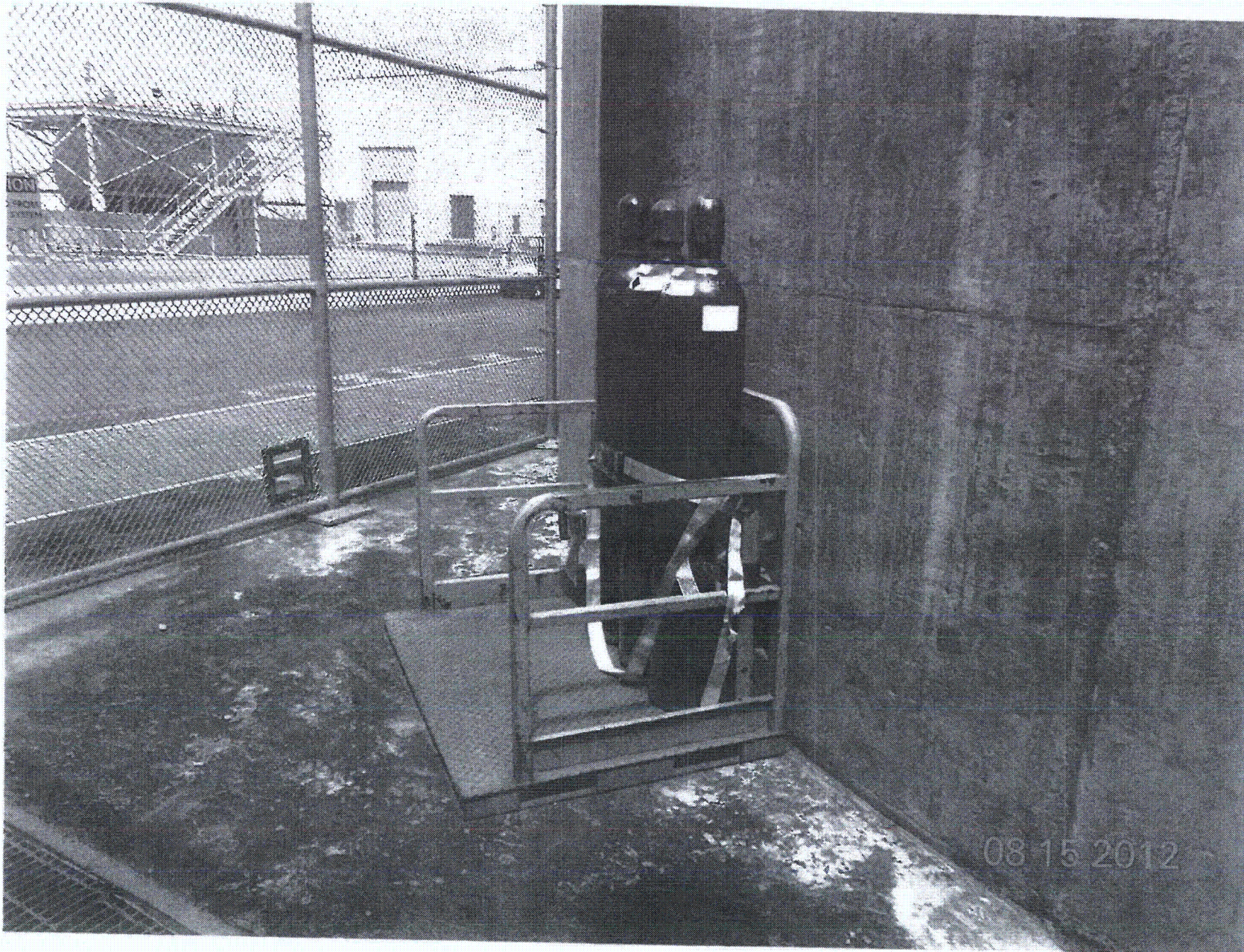
The tank is concrete shell structure. Tank shell on top of concrete foundation has no sign of degradation or structural cracks. The hairline crack is superficial and no effect to the integrity of tank and is acceptable.

Evaluated by: Frank Yao / J. Gao Date: 8/15/2012

PARIMAL GANDHI / P. Gandhi 8/15/2012

< C.4 >







Sheet 1 of 2
 Status: N U

Seismic Walkdown Checklist (SWC)

Equipment ID No. 2-1407-P5-SGS Equip. Class¹² 18 (Instrument Rack)
 Equipment Description SGB Isol. Solenoid Rack
 Location: Bldg. AUX Floor El. 180'-0" Room, Area RB 130
 Manufacturer, Model, Etc. (optional but recommended) Reliance Custom Controls

Instructions for Completing Checklist

This checklist may be used to document the results of the Seismic Walkdown of an item of equipment on the SWEL. The space below each of the following questions may be used to record the results of judgments and findings. Additional space is provided at the end of this checklist for documenting other comments.

Anchorage

1. Is the anchorage configuration verification required (i.e., is the item one of the 50% of SWEL items requiring such verification)? Y N U N/A *J.D. 8-16-12*
2. Is the anchorage free of bent, broken, missing or loose hardware? Y N U N/A
3. Is the anchorage free of corrosion that is more than mild surface oxidation? Y N U N/A
4. Is the anchorage free of visible cracks in the concrete near the anchors? Y N U N/A
5. Is the anchorage configuration consistent with plant documentation?
 (Note: This question only applies if the item is one of the 50% for which an anchorage configuration verification is required.)
 Ref. 2x5AB01-745-6 Y N U N/A
6. Based on the above anchorage evaluations, is the anchorage free of potentially adverse seismic conditions? Y N U

¹² Enter the equipment class name from Appendix B: Classes of Equipment.

Seismic Walkdown Checklist (SWC)

Equipment ID No. 2-1407-P5-S65 Equip. Class¹² 18 (Instrument Rack)

Equipment Description SGB Isol. Solenoid Rack

Interaction Effects

7. Are soft targets free from impact by nearby equipment or structures? Y N U N/A

8. Are overhead equipment, distribution systems, ceiling tiles and lighting, and masonry block walls not likely to collapse onto the equipment? Y N U N/A

9. Do attached lines have adequate flexibility to avoid damage? Y N U N/A

10. Based on the above seismic interaction evaluations, is equipment free of potentially adverse seismic interaction effects? Y N U

Other Adverse Conditions

11. Have you looked for and found no other seismic conditions that could adversely affect the safety functions of the equipment? Y N U

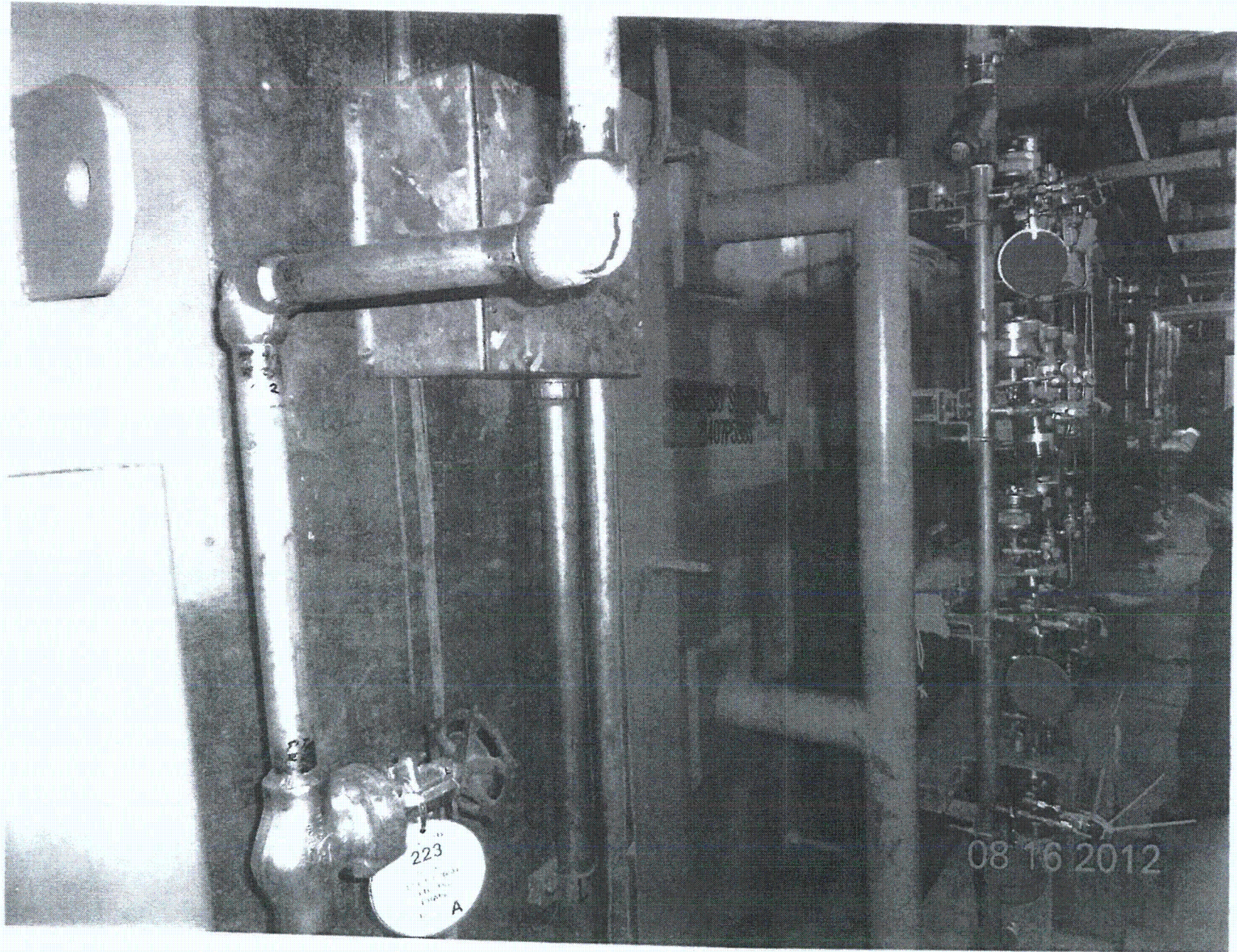
Comments (Additional pages may be added as necessary)

None

Evaluated by: James D. ... / JAMES D. ... Date: 8-16-2012

Winston Stearns / Winston Stearns 5/16/2012

< C4 >





Sheet 1 of 2
Status: Y N U

Seismic Walkdown Checklist (SWC)

Equipment ID No. 2-1500-Q5-HVC Equip. Class¹² 20

Equipment Description HVAC PANEL

Location: Bldg. CONTROL Floor El. 220' Room, Area R164

Manufacturer, Model, Etc. (optional but recommended) _____

Instructions for Completing Checklist

This checklist may be used to document the results of the Seismic Walkdown of an item of equipment on the SWEL. The space below each of the following questions may be used to record the results of judgments and findings. Additional space is provided at the end of this checklist for documenting other comments.

Anchorage

- 1. Is the anchorage configuration verification required (i.e., is the item one of the 50% of SWEL items requiring such verification)? Y N
- 2. Is the anchorage free of bent, broken, missing or loose hardware? Y N U N/A
- 3. Is the anchorage free of corrosion that is more than mild surface oxidation? Y N U N/A
- 4. Is the anchorage free of visible cracks in the concrete near the anchors? Y N U N/A
WELDED CONNECTION
- 5. Is the anchorage configuration consistent with plant documentation? Y N U N/A
(Note: This question only applies if the item is one of the 50% for which an anchorage configuration verification is required.)
2X5AB01 - 00827, VER. 12.0
- 6. Based on the above anchorage evaluations, is the anchorage free of potentially adverse seismic conditions? Y N U

¹² Enter the equipment class name from Appendix B. Classes of Equipment.

Seismic Walkdown Checklist (SWC)

Equipment ID No. 21500-Q5-HVC Equip. Class¹² 20

Equipment Description HVAC PANEL

Interaction Effects

7. Are soft targets free from impact by nearby equipment or structures? Y N U N/A

8. Are overhead equipment, distribution systems, ceiling tiles and lighting, and masonry block walls not likely to collapse onto the equipment? Y N U N/A

9. Do attached lines have adequate flexibility to avoid damage? Y N U N/A

10. Based on the above seismic interaction evaluations, is equipment free of potentially adverse seismic interaction effects? Y N U

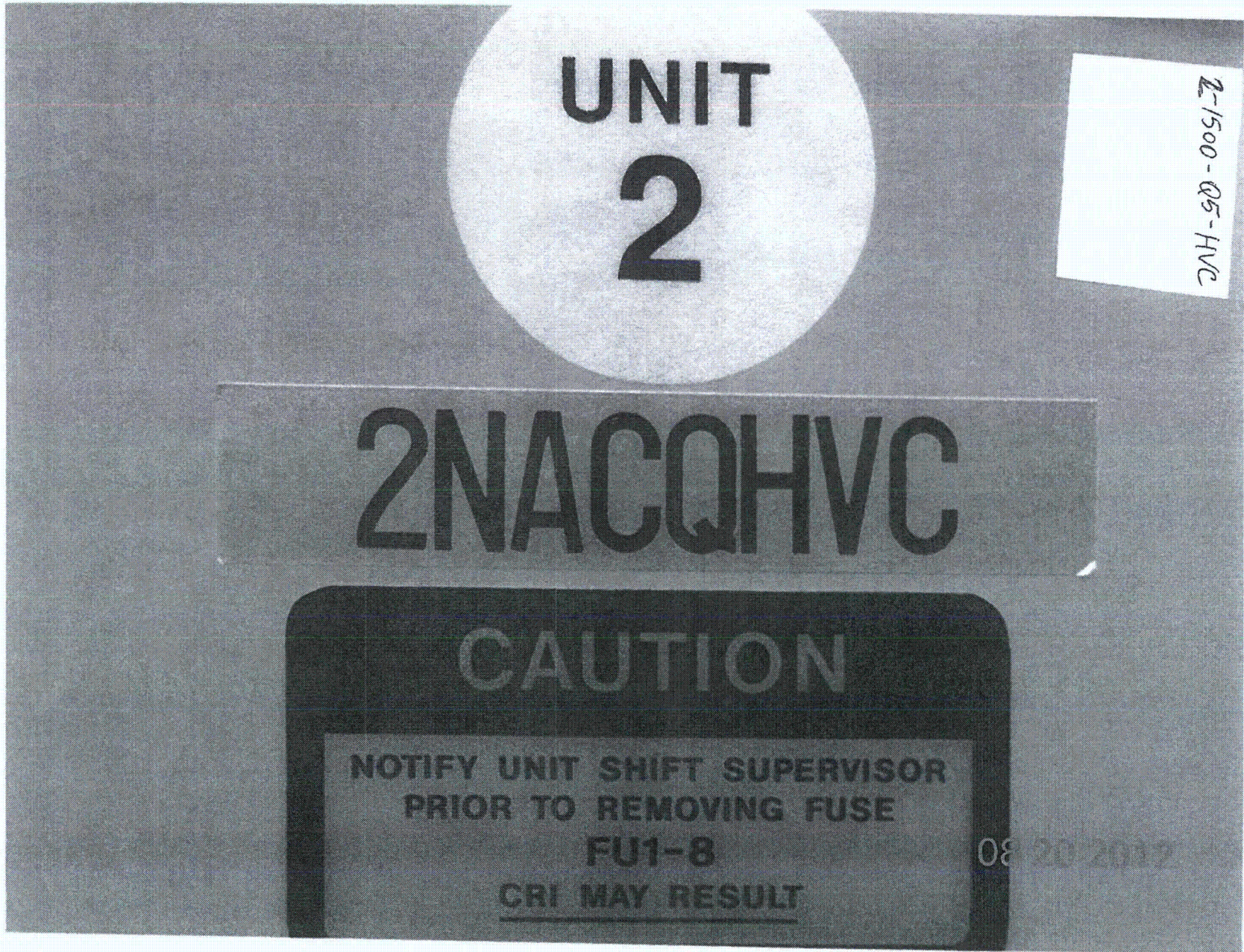
Other Adverse Conditions

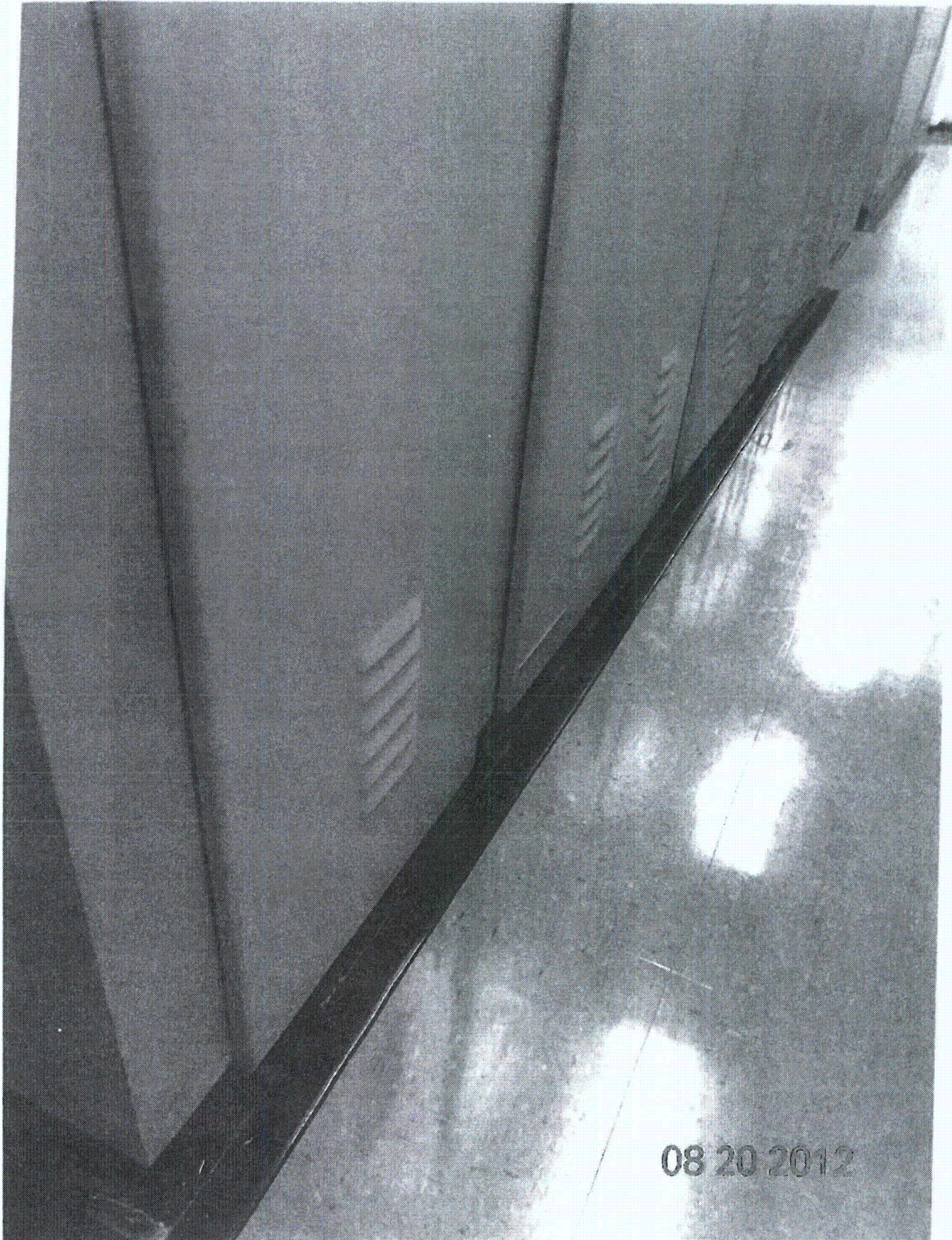
11. Have you looked for and found no other seismic conditions that could adversely affect the safety functions of the equipment? Y N U

Comments (Additional pages may be added as necessary)

NONE

Evaluated by: David Voloparsky DAVID VOLOPARSKY Date: 8/20/2012
Matthew Wilkinson Matthew Wilkinson 8/20/2012





Sheet 1 of 2
 Status: (Y) N U

Seismic Walkdown Checklist (SWC)

Equipment ID No. 2-1531-N7-001 Equip. Class¹² 1A - AIR HANDLERS
 Equipment Description CONTROL BUILDING CONTROL ROOM FILTER UNIT
 Location: Bldg. CONTROL Floor El. 260'-0" Room, Area R 311
 Manufacturer, Model, Etc. (optional but recommended) AMERICAN AIR FILTER

Instructions for Completing Checklist

This checklist may be used to document the results of the Seismic Walkdown of an item of equipment on the SWEL. The space below each of the following questions may be used to record the results of judgments and findings. Additional space is provided at the end of this checklist for documenting other comments.

Anchorage

1. Is the anchorage configuration verification required (i.e., is the item one of the 50% of SWEL items requiring such verification)? Y N
2. Is the anchorage free of bent, broken, missing or loose hardware? Y N U N/A
3. Is the anchorage free of corrosion that is more than mild surface oxidation? Y N U N/A
4. Is the anchorage free of visible cracks in the concrete near the anchors? Y N U N/A
5. Is the anchorage configuration consistent with plant documentation? Y N U N/A
 (Note: This question only applies if the item is one of the 50% for which an anchorage configuration verification is required.)
 DRAWINGS: 2X4AJ07-201-11, SKT. 1 OF 2 ; 2X4AJ07-533-3
6. Based on the above anchorage evaluations, is the anchorage free of potentially adverse seismic conditions? Y N U

¹² Enter the equipment class name from Appendix B: Classes of Equipment.

Seismic Walkdown Checklist (SWC)

Equipment ID No. 2-1531-N7-001 Equip. Class¹² 1A - AIR HANDLERS

Equipment Description CONTROL BUILDING CONTROL ROOM FILTER UNIT

Interaction Effects

- 7. Are soft targets free from impact by nearby equipment or structures? YES NO U N/A
- 8. Are overhead equipment, distribution systems, ceiling tiles and lighting, and masonry block walls not likely to collapse onto the equipment? YES NO U N/A
- 9. Do attached lines have adequate flexibility to avoid damage? YES NO U N/A
- 10. Based on the above seismic interaction evaluations, is equipment free of potentially adverse seismic interaction effects? YES NO U

Other Adverse Conditions

- 11. Have you looked for and found no other seismic conditions that could adversely affect the safety functions of the equipment? YES NO U

Comments (Additional pages may be added as necessary)

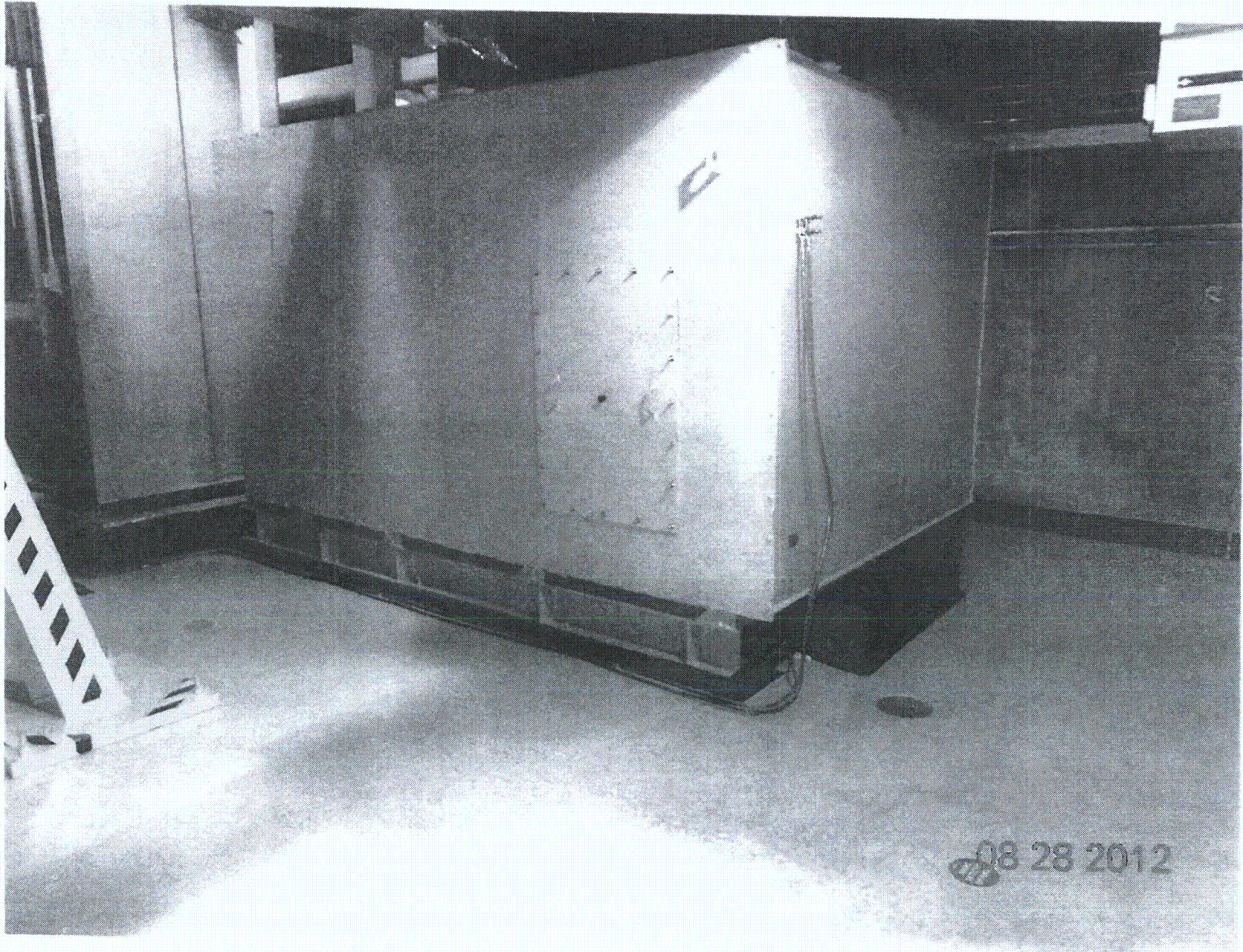
NONE

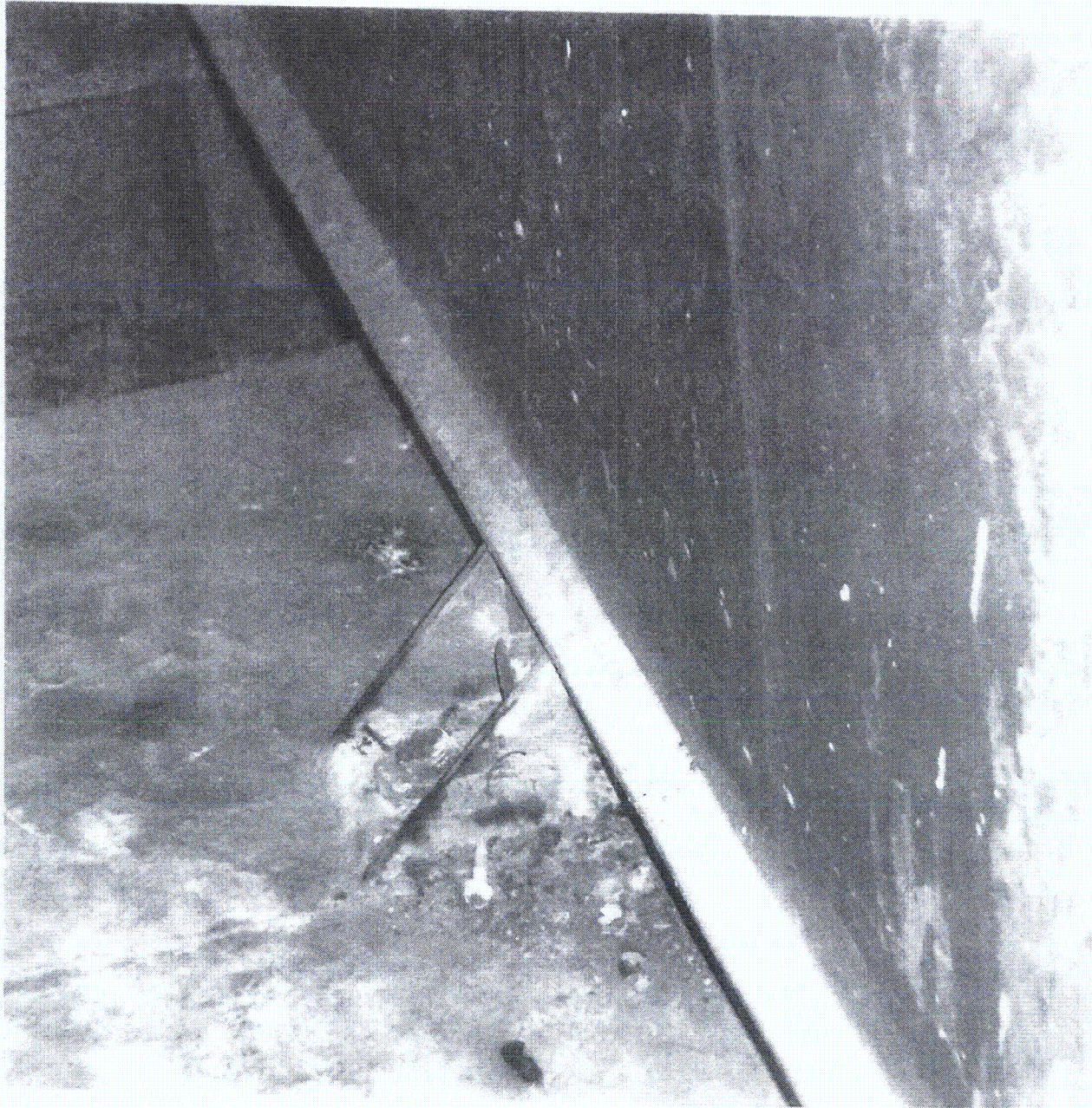
SEE 2-1531-B7-005-001 FL2 AWC

Evaluated by: James Dowl / JAMES DOWL Date: 8-28-2012

W.A. Stewart / Winston Stewart 8/28/2012

<C4>





08 28 2012

Sheet 1 of 2

Status: Y N U

Seismic Walkdown Checklist (SWC)

Equipment ID No. 2-1539-A7-001-000 Equip. Class¹² 18

Equipment Description CB AUX RELAY RM ESF A/C UNIT

Location: Bldg. CONTROL Floor El. 200' Room, Area RAB1

Manufacturer, Model, Etc. (optional but recommended) AMERICAN AIR FILTER

Instructions for Completing Checklist

This checklist may be used to document the results of the Seismic Walkdown of an item of equipment on the SWEL. The space below each of the following questions may be used to record the results of judgments and findings. Additional space is provided at the end of this checklist for documenting other comments.

Anchorage

1. Is the anchorage configuration verification required (i.e., is the item one of the 50% of SWEL items requiring such verification)? Y N U

2. Is the anchorage free of bent, broken, missing or loose hardware? Y N U N/A

3. Is the anchorage free of corrosion that is more than mild surface oxidation? Y N U N/A

4. Is the anchorage free of visible cracks in the concrete near the anchors? Y N U N/A

5. Is the anchorage configuration consistent with plant documentation? Y N U N/A
 (Note: This question only applies if the item is one of the 50% for which an anchorage configuration verification is required.)

EQDP XA AJ06, REV. 2

6. Based on the above anchorage evaluations, is the anchorage free of potentially adverse seismic conditions? Y N U

¹² Enter the equipment class name from Appendix B: Classes of Equipment.

Seismic Walkdown Checklist (SWC)

Equipment ID No. 2-1539-A7-001-000 Equip. Class¹² 18

Equipment Description CB AUX RELAY RM ESF A/C UNIT

Interaction Effects

7. Are soft targets free from impact by nearby equipment or structures? Y N U N/A

8. Are overhead equipment, distribution systems, ceiling tiles and lighting, and masonry block walls not likely to collapse onto the equipment? Y N U N/A

9. Do attached lines have adequate flexibility to avoid damage? Y N U N/A

10. Based on the above seismic interaction evaluations, is equipment free of potentially adverse seismic interaction effects? Y N U

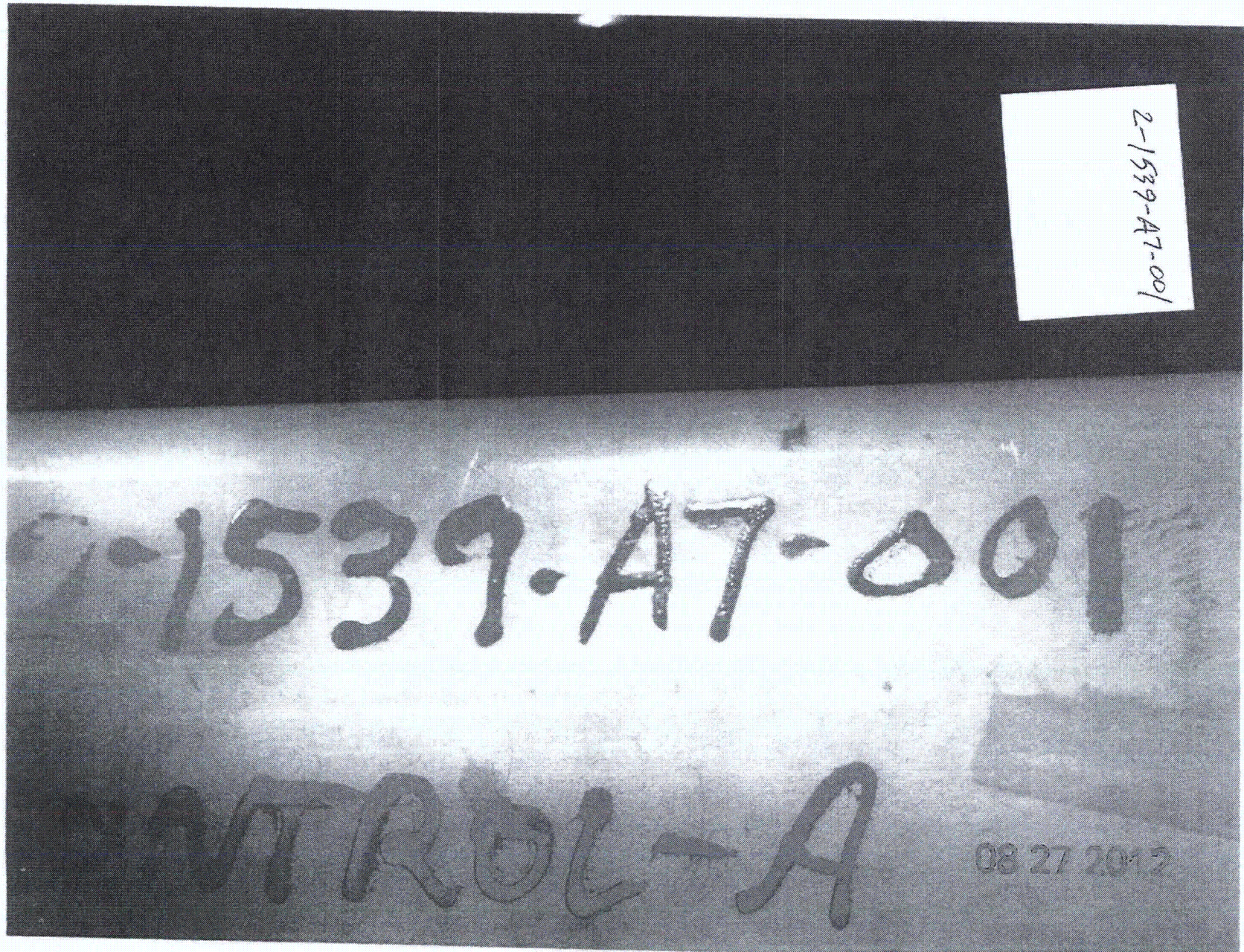
Other Adverse Conditions

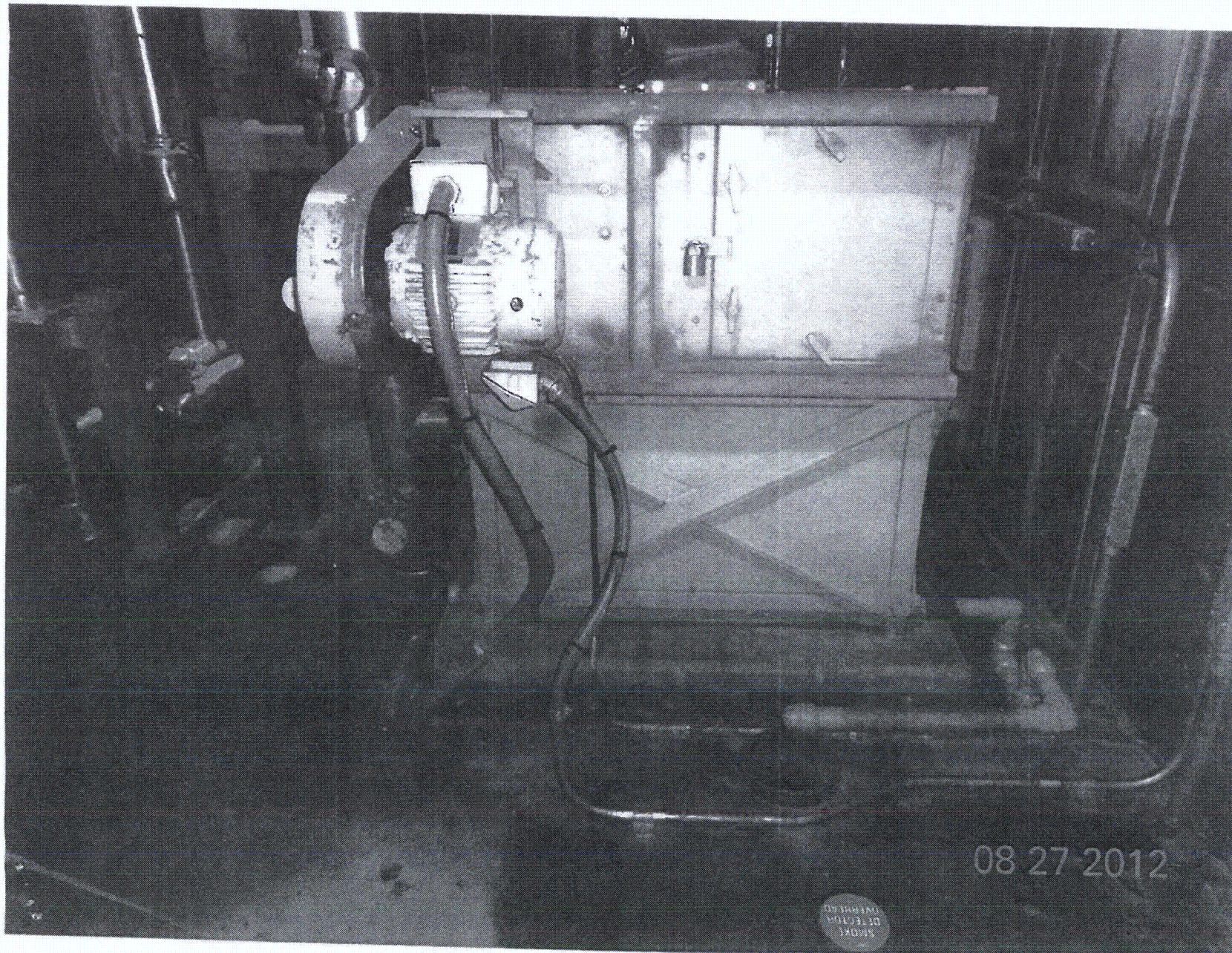
11. Have you looked for and found no other seismic conditions that could adversely affect the safety functions of the equipment? Y N U

Comments (Additional pages may be added as necessary)

NONE

Evaluated by: David Volodarsky DAVID VOLODARSKY Date: 8/27/2012
Matthew Wilkinson Matthew Wilkinson 8/27/2012





Seismic Walkdown Checklist (SWC)

Equipment ID No. 2-1540-B7-003-000 Equip. Class¹² 9 - FANS

Equipment Description COOLING WATER TOWER CABLE TUNNEL EXHAUST FAN

Location: Bldg. TUNNEL Floor El. 220 Room, Area PIPING TUNNEL 2T2A

Manufacturer, Model, Etc. (optional but recommended) _____

Instructions for Completing Checklist

This checklist may be used to document the results of the Seismic Walkdown of an item of equipment on the SWEL. The space below each of the following questions may be used to record the results of judgments and findings. Additional space is provided at the end of this checklist for documenting other comments.

Anchorage

1. Is the anchorage configuration verification required (i.e., is the item one of the 50% of SWEL items requiring such verification)? Y N

2. Is the anchorage free of bent, broken, missing or loose hardware? Y N U N/A

3. Is the anchorage free of corrosion that is more than mild surface oxidation? Y N U N/A

4. Is the anchorage free of visible cracks in the concrete near the anchors? Y N U N/A
*SEE CR # 51338
 Grout was missing on the anchor bolts area. The condition was documented on a CR to initiate action to correct the issue.
 JEH. 10/27/14.*

5. Is the anchorage configuration consistent with plant documentation? Y N U N/A
 (Note: This question only applies if the item is one of the 50% for which an anchorage configuration verification is required.)

6. Based on the above anchorage evaluations, is the anchorage free of potentially adverse seismic conditions? Y N U

¹² Enter the equipment class name from Appendix B: Classes of Equipment.

Seismic Walkdown Checklist (SWC)

Equipment ID No. 2-1540-07-003-000 Equip. Class¹² 9

Equipment Description EXHAUST FAN

Interaction Effects

7. Are soft targets free from impact by nearby equipment or structures? Y N U N/A

8. Are overhead equipment, distribution systems, ceiling tiles and lighting, and masonry block walls not likely to collapse onto the equipment? Y N U N/A

9. Do attached lines have adequate flexibility to avoid damage? Y N U N/A

10. Based on the above seismic interaction evaluations, is equipment free of potentially adverse seismic interaction effects? Y N U

Other Adverse Conditions

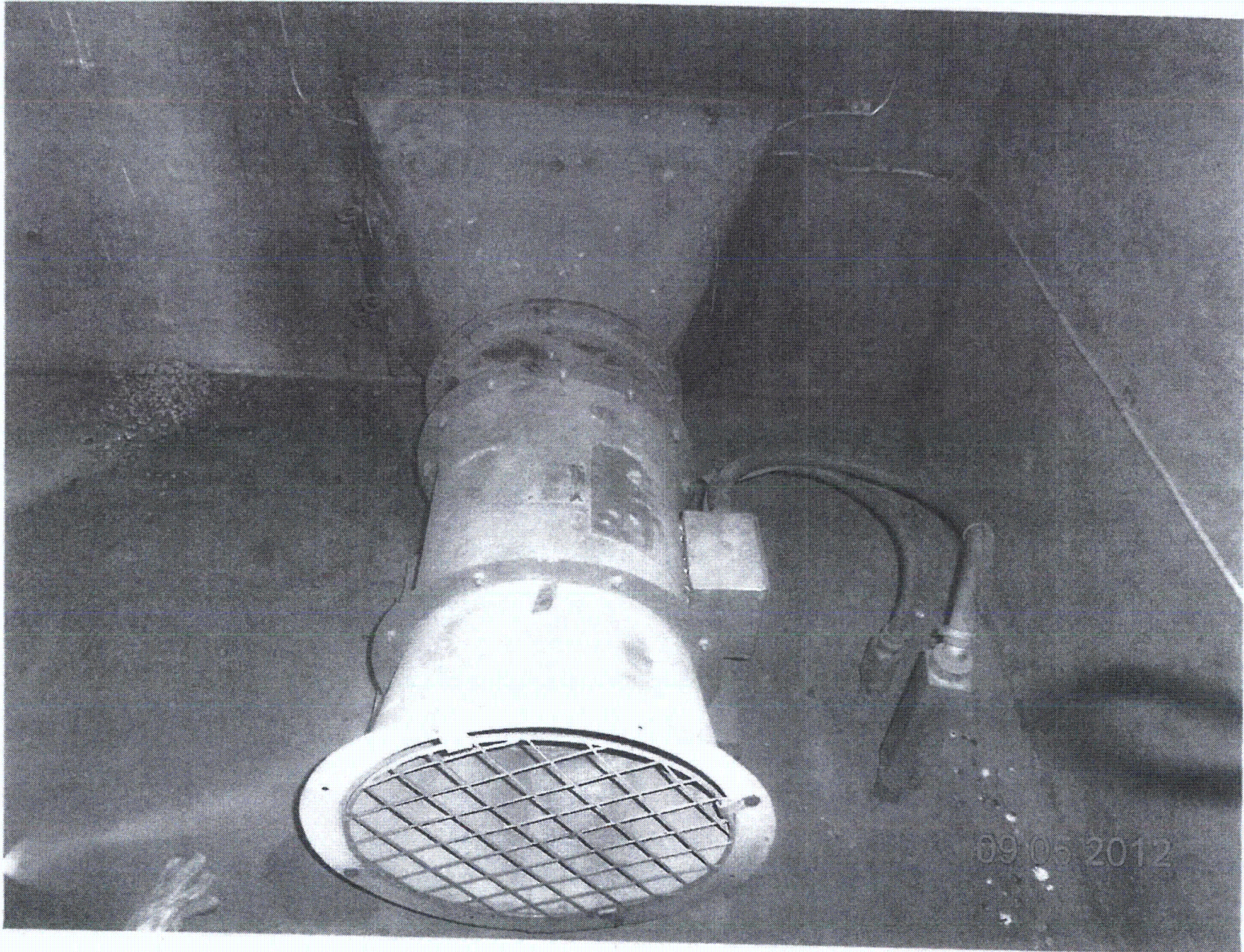
11. Have you looked for and found no other seismic conditions that could adversely affect the safety functions of the equipment? Y N U

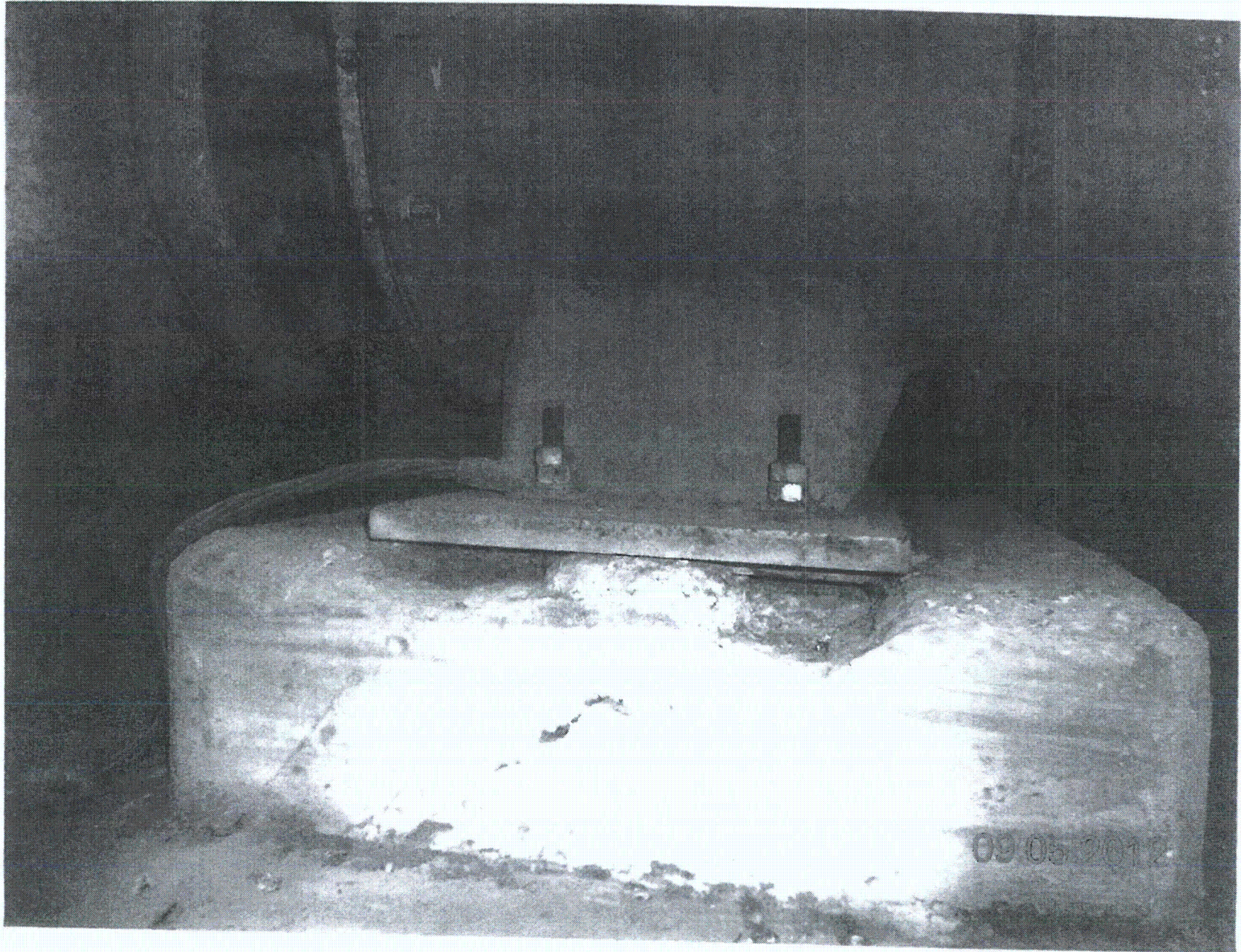
Comments (Additional pages may be added as necessary)

Evaluated by: James Devel / JAMES DEVEL Date: 9-5-12
José R. Hernandez 9/05/12

< C.4 >







Sheet 1 of 2
 Status: Y N U

Seismic Walkdown Checklist (SWC)

Equipment ID No. 2-1555-A7-001-000 Equip. Class¹² AIR HANDLER - CLASS 10

Equipment Description ELEC SWGR AND MEC ROOM COOLER A

Location: Bldg. AUX Floor El. 119'-3" Room, Area R002

Manufacturer, Model, Etc. (optional but recommended) AMERICAN AIR FILTER COMPANY

Instructions for Completing Checklist

This checklist may be used to document the results of the Seismic Walkdown of an item of equipment on the SWEL. The space below each of the following questions may be used to record the results of judgments and findings. Additional space is provided at the end of this checklist for documenting other comments.

Anchorage

1. Is the anchorage configuration verification required (i.e., is the item one of the 50% of SWEL items requiring such verification)? Y N U

2. Is the anchorage free of bent, broken, missing or loose hardware? Y N U N/A

3. Is the anchorage free of corrosion that is more than mild surface oxidation? Y N U N/A

4. Is the anchorage free of visible cracks in the concrete near the anchors? Y N U N/A

5. Is the anchorage configuration consistent with plant documentation? Y N U N/A
 (Note: This question only applies if the item is one of the 50% for which an anchorage configuration verification is required.)
AXZ0086041, VER. 6.0

6. Based on the above anchorage evaluations, is the anchorage free of potentially adverse seismic conditions? Y N U

¹² Enter the equipment class name from Appendix B: Classes of Equipment.

Seismic Walkdown Checklist (SWC)

Equipment ID No. 2-1535-A7-001-000 Equip. Class¹² 10 AIR HANDLERS

Equipment Description ELEC SWGR AND MCC ROOM COOLER A

Interaction Effects

7. Are soft targets free from impact by nearby equipment or structures? Y N U N/A

8. Are overhead equipment, distribution systems, ceiling tiles and lighting, and masonry block walls not likely to collapse onto the equipment? Y N U N/A

9. Do attached lines have adequate flexibility to avoid damage? Y N U N/A


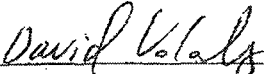
10. Based on the above seismic interaction evaluations, is equipment free of potentially adverse seismic interaction effects? Y N U

Other Adverse Conditions

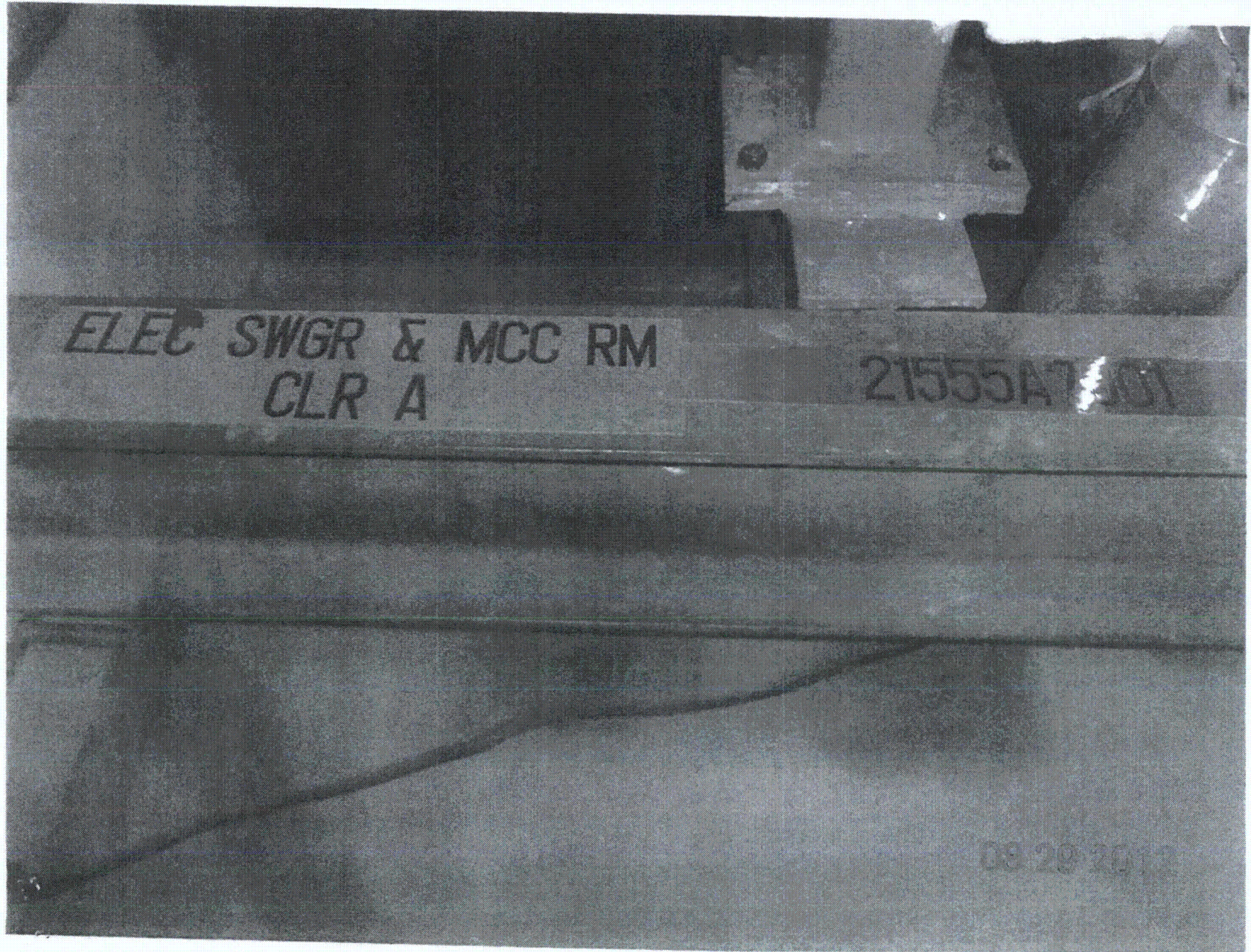
11. Have you looked for and found no other seismic conditions that could adversely affect the safety functions of the equipment? Y N U

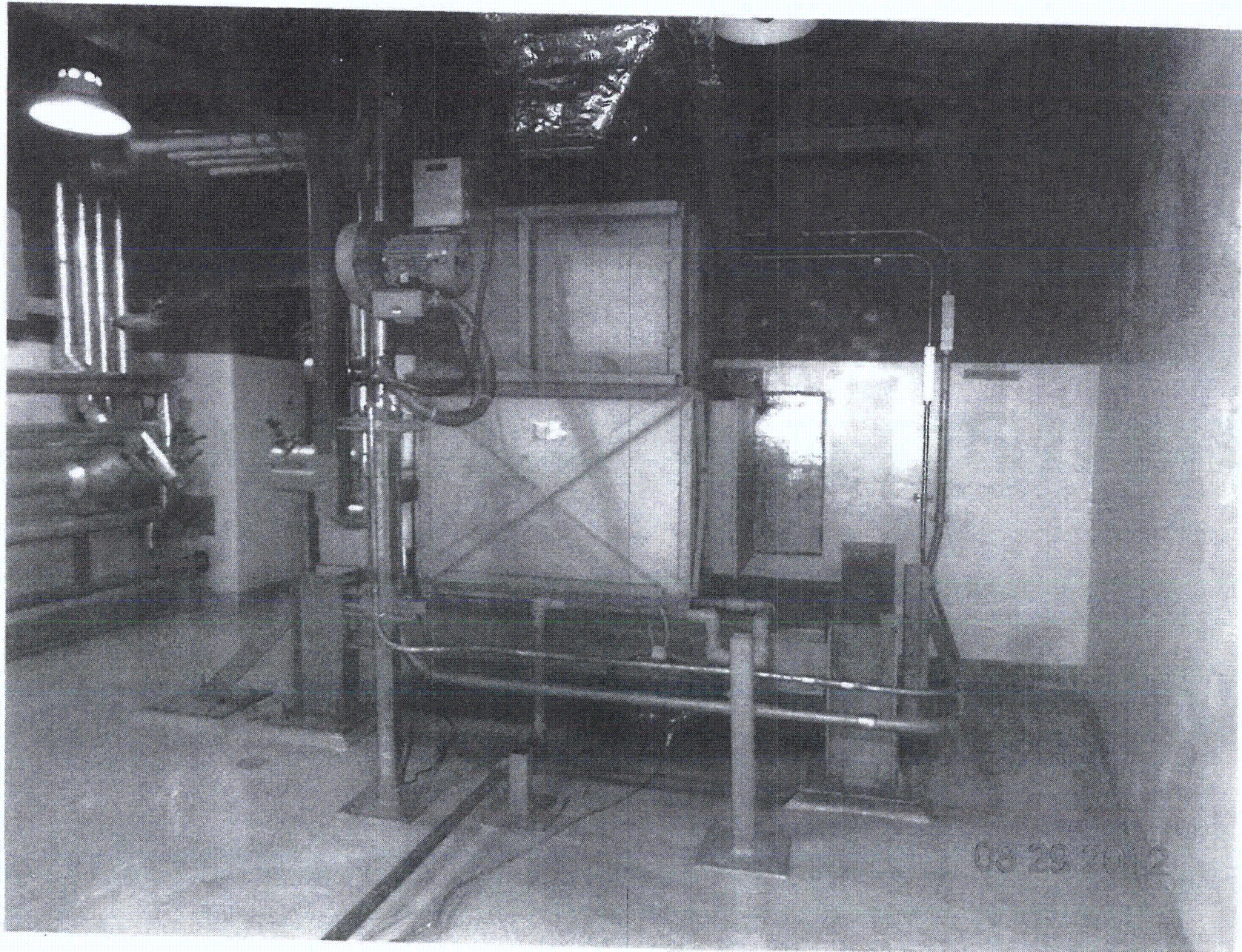
Comments (Additional pages may be added as necessary)

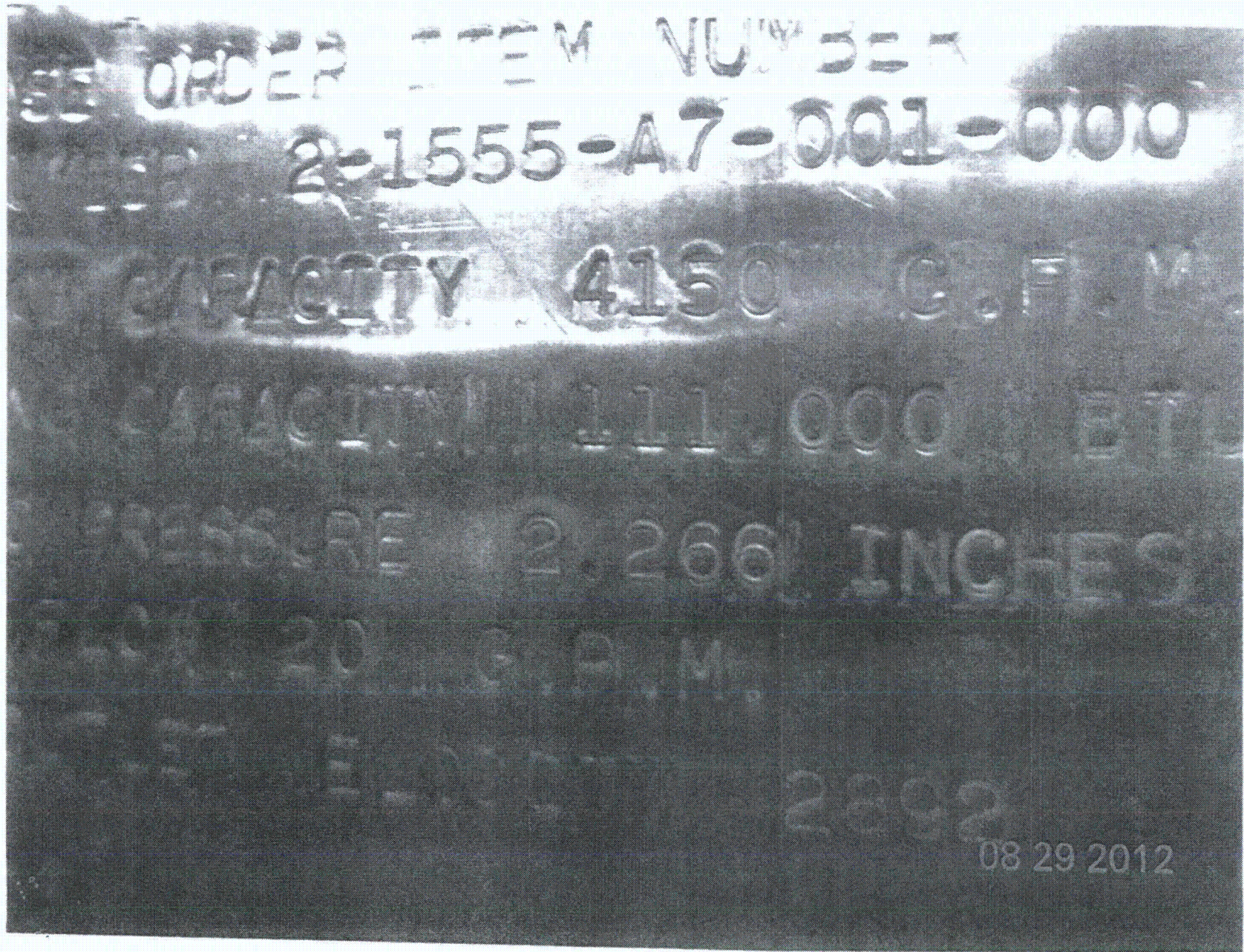
NONE

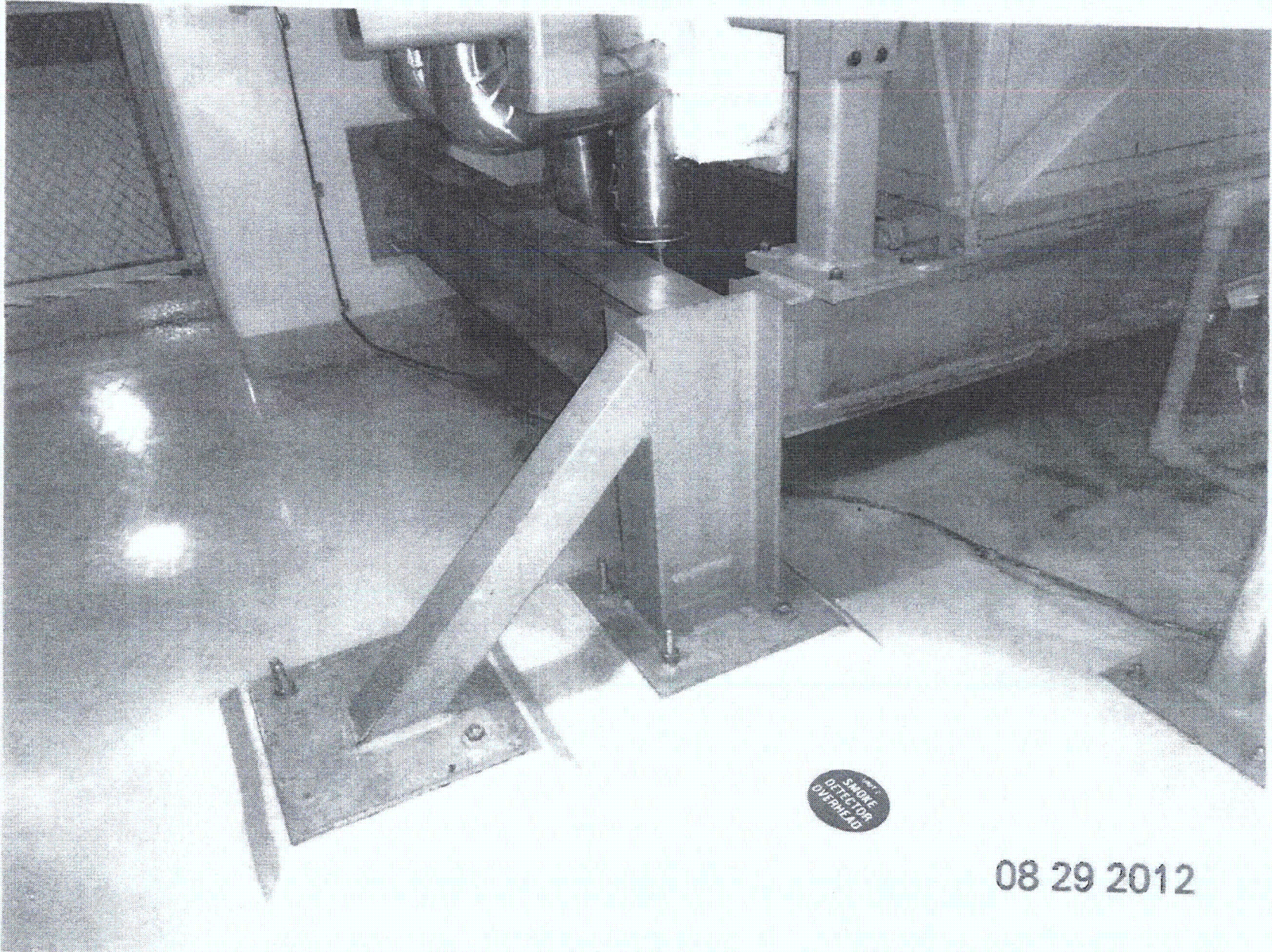
Evaluated by:  Matthew Wilkinson Date: 8/29/2012
 DAVID VOLODARSKY 8/29/2012

< C4 >



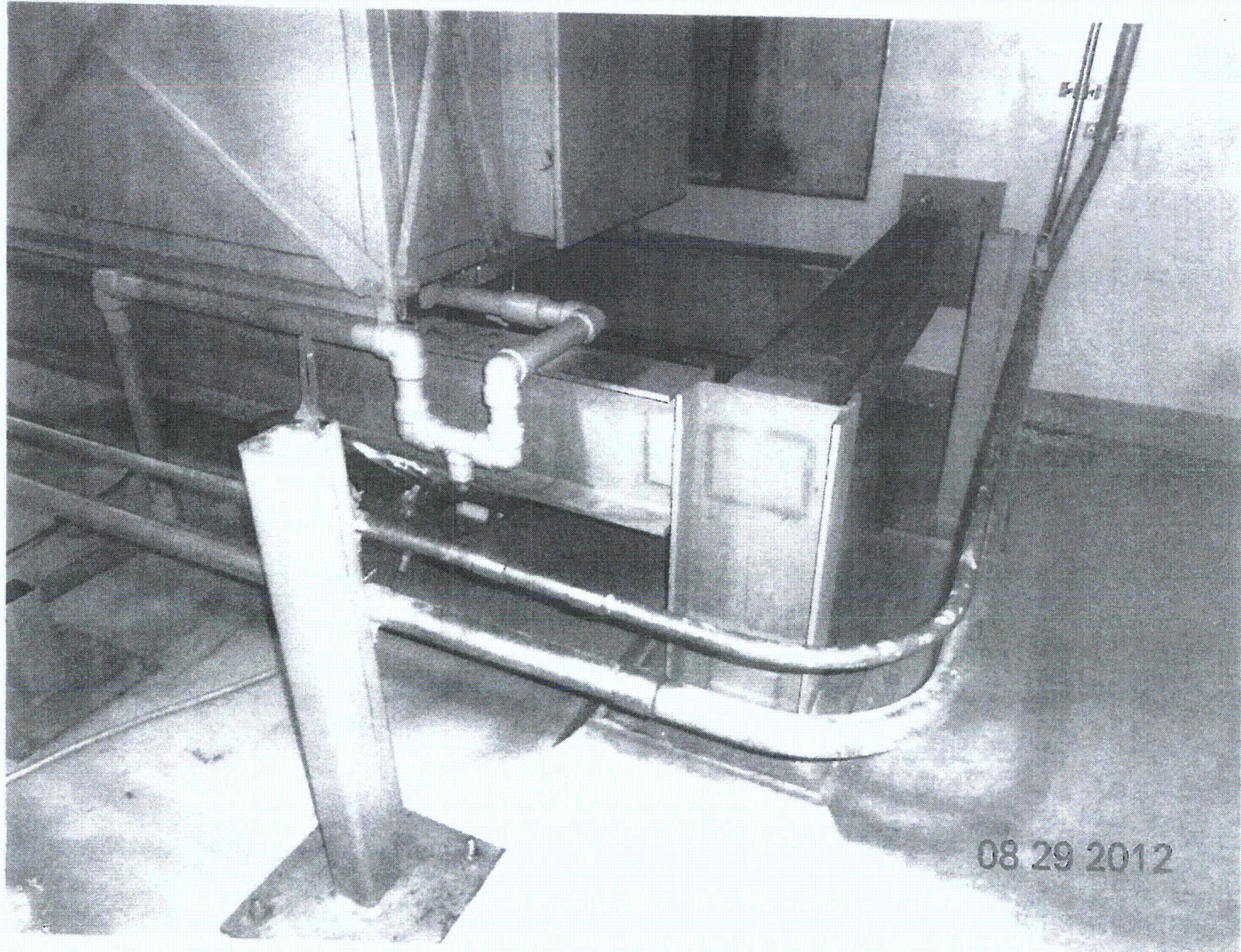






SMOKE
DETECTOR
OVERHEAD

08 29 2012



Status: Y N U
 3.0 9-4-12

Seismic Walkdown Checklist (SWC)

Equipment ID No. 2-1561-N7-001-000 Equip. Class¹² 10 - Air Handlers

Equipment Description PIPING PENETRATION ROOM FILTRATION AND EXHAUST UNIT

Location: Bldg. AUX Floor El. 245'-0" Room, Area R219

Manufacturer, Model, Etc. (optional but recommended) American Air Filter

Instructions for Completing Checklist

This checklist may be used to document the results of the Seismic Walkdown of an item of equipment on the SWEL. The space below each of the following questions may be used to record the results of judgments and findings. Additional space is provided at the end of this checklist for documenting other comments.

Anchorage

1. Is the anchorage configuration verification required (i.e., is the item one of the 50% of SWEL items requiring such verification)? Y N U

2. Is the anchorage free of bent, broken, missing or loose hardware? Y N U N/A

3. Is the anchorage free of corrosion that is more than mild surface oxidation? Y N U N/A

4. Is the anchorage free of visible cracks in the concrete near the anchors? Y N U N/A
 VISIBLE CRACKS NEAR ANCHORS APPEAR ONLY IN THE GROUT ON TOP OF CASTING. NO CRACKS APPEAR IN CONCRETE CASTING. NOT A SEISMIC CONCERN

5. Is the anchorage configuration consistent with plant documentation? Y N U N/A
 (Note: This question only applies if the item is one of the 50% for which an anchorage configuration verification is required.)

6. Based on the above anchorage evaluations, is the anchorage free of potentially adverse seismic conditions? Y N U

Drawing: 2X40507-274-6; AX2008A114, Ver. 11

¹² Enter the equipment class name from Appendix B: Classes of Equipment.

Seismic Walkdown Checklist (SWC)

Equipment ID No. 2-1561-N7-001-000 Equip. Class¹² 10 AIR HANDLERS

Equipment Description PLDING PENETRATION ROOM FILTRATION AND EXHAUST UNIT

Interaction Effects

7. Are soft targets free from impact by nearby equipment or structures? Y N U N/A

8. Are overhead equipment, distribution systems, ceiling tiles and lighting, and masonry block walls not likely to collapse onto the equipment? Y N U N/A

9. Do attached lines have adequate flexibility to avoid damage? Y N U N/A
 ATTACHED HUNG OUT IS ANCHORED TO THE CEILING, FLOOR AS WELL AS THE UNIT ITSELF. A REVIEW OF THE RESPONSE SPECTRA FOR BOTH THE CEILING AND FLOOR SHOWS THAT THEY HAVE THE SAME PEAK ACCELERATION, (CONT'D BELOW)

10. Based on the above seismic interaction evaluations, is equipment free of potentially adverse seismic interaction effects? Y N U

Other Adverse Conditions

11. Have you looked for and found no other seismic conditions that could adversely affect the safety functions of the equipment? Y N U

Comments (Additional pages may be added as necessary) (CONT'D FROM ITEM # 9 ABOVE)

SINCE BOTH THE ROOF AND FLOOR HAVE THE SAME PEAK SEISMIC ACCELERATION, NO DIFFERENTIAL MOVEMENT IS EXPECTED. THEREFORE, THE ~~REPORT~~ "AS INSTALLED" CONDITION IS ACCEPTABLE.
 J.D. 9-4-12

Evaluated by: James Davel / JAMES DAVAL Date: 9-4-2012

WJH / Winston Stewart 09/04/2012

< C4 >

