

ATTACHMENT 3

WALKDOWN CHECKLISTS

Status: ☒ Y ☐ N ☐ U

Seismic Walkdown Checklist (SWC)

Equipment ID No.: 1SV5149

Equipment Class: (8) Motor-Operated and Solenoid-Operated Valves

Equipment Description: SALT WTR EMERG OUT

Project: CCNPP 1 SWEL

Location (Bldg, Elev, Room/Area): Intake, -7.00 ft, CAL-ISPR-INT1

Manufacturer/Model:

Instructions for Completing Checklist

This checklist may be used to document the results of the Seismic Walkdown of an item of equipment on the SWEL. The space below each of the following questions may be used to record the results of judgments and findings. Additional space is provided at the end of this checklist for documenting other comments.

Anchorage

1. Is anchorage configuration verification required (i.e., is the item one of the 50% of SWEL items requiring such verification)? No
Solenoid for 1CV5149 and mounted directly on 1CV5149.
2. Is the anchorage free of bent, broken, missing or loose hardware? Not Applicable
3. Is the anchorage free of corrosion that is more than mild surface oxidation? Not Applicable
4. Is the anchorage free of visible cracks in the concrete near the anchors? Not Applicable
5. Is the anchorage configuration consistent with plant documentation? (Note: This question only applies if the item is one of the 50% for which an anchorage configuration verification is required.) Not Applicable
6. Based on the above anchorage evaluations, is the anchorage free of potentially adverse seismic conditions? Yes

Interaction Effects

ATTACHMENT 3
WALKDOWN CHECKLISTS

Status: ☒ Y ☐ N ☐ U

Seismic Walkdown Checklist (SWC)

Equipment ID No.: 1SV5149

Equipment Class: (8) Motor-Operated and Solenoid-Operated Valves

Equipment Description: SALT WTR EMERG OUT

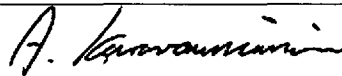
-
- | | | |
|------|--|-----|
| 7. | Are soft targets free from impact by nearby equipment or structures? | Yes |
|
 | | |
| 8. | Are overhead equipment, distribution systems, ceiling tiles and lighting, and masonry block walls not likely to collapse onto the equipment? | Yes |
|
 | | |
| 9. | Do attached lines have adequate flexibility to avoid damage? | Yes |
|
 | | |
| 10. | Based on the above seismic interaction evaluations, is equipment free of potentially adverse seismic interaction effects? | Yes |

Other Adverse Conditions

- | | | |
|-----|--|-----|
| 11. | Have you looked for and found no adverse seismic conditions that could adversely affect the safety functions of the equipment? | Yes |
|-----|--|-----|

Comments

Evaluated by:



A. Karavoussianis

Date: 11/09/2012



C. Figliolini

11/09/2012

Photos

ATTACHMENT 3

WALKDOWN CHECKLISTS

Status: ☒ Y ☐ N ☐ U

Seismic Walkdown Checklist (SWC)

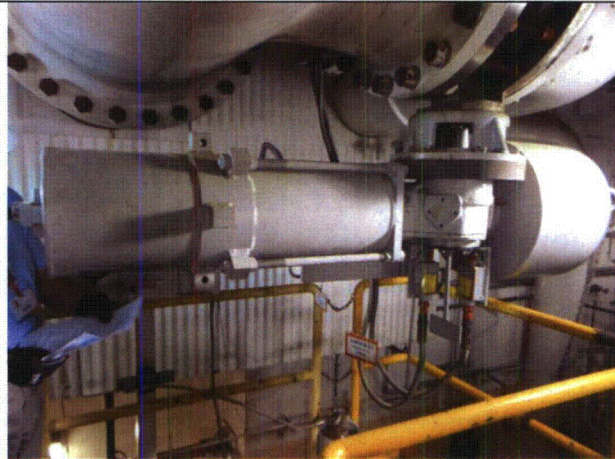
Equipment ID No.: 1SV5149

Equipment Class: (8) Motor-Operated and Solenoid-Operated Valves

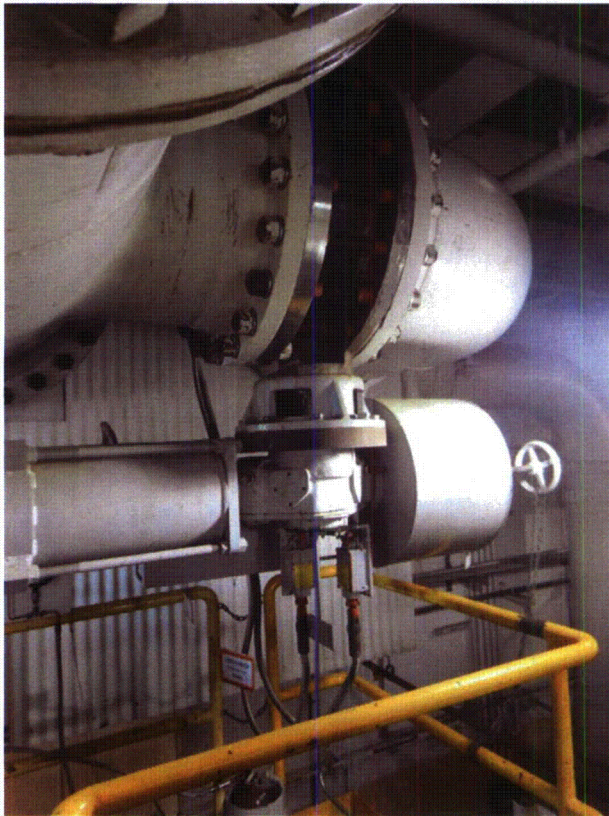
Equipment Description: SALT WTR EMERG OUT



1SV5149 8-16-12 184



1SV5149 8-16-12 185



1SV5149 8-16-12 186



1SV5149 8-16-12 187

ATTACHMENT 3

WALKDOWN CHECKLISTS

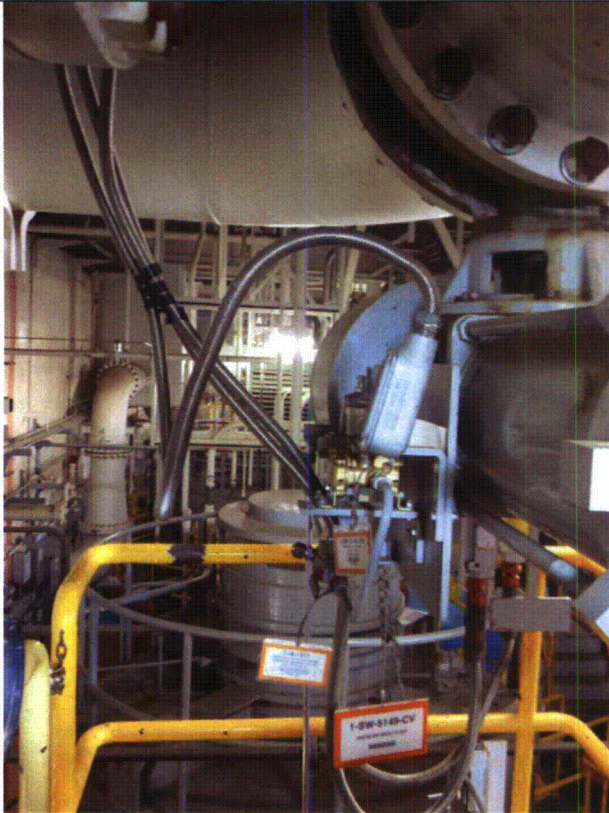
Status: ☒ Y ☐ N ☐ U

Seismic Walkdown Checklist (SWC)

Equipment ID No.: 1SV5149

Equipment Class: (8) Motor-Operated and Solenoid-Operated Valves

Equipment Description: SALT WTR EMERG OUT



1SV5149 8-16-12 188

ATTACHMENT 3

WALKDOWN CHECKLISTS

Status: ☒ Y ☐ N ☐ U

Seismic Walkdown Checklist (SWC)

Equipment ID No.: 1SV5313A

Equipment Class: (8) Motor-Operated and Solenoid-Operated Valves

Equipment Description: CNTMT PRESS XMITTERS CHAN A

Project: CCNPP 1 SWEL

Location (Bldg, Elev, Room/Area): AUX, 45.00 ft, CAL-AB-429

Manufacturer/Model:

Instructions for Completing Checklist

This checklist may be used to document the results of the Seismic Walkdown of an item of equipment on the SWEL. The space below each of the following questions may be used to record the results of judgments and findings. Additional space is provided at the end of this checklist for documenting other comments.

Anchorage

1. Is anchorage configuration verification required (i.e., is the item one of the 50% of SWEL items requiring such verification)? No
2. Is the anchorage free of bent, broken, missing or loose hardware? Not Applicable
3. Is the anchorage free of corrosion that is more than mild surface oxidation? Not Applicable
4. Is the anchorage free of visible cracks in the concrete near the anchors? Not Applicable
5. Is the anchorage configuration consistent with plant documentation? (Note: This question only applies if the item is one of the 50% for which an anchorage configuration verification is required.) Not Applicable
6. Based on the above anchorage evaluations, is the anchorage free of potentially adverse seismic conditions? Yes

Interaction Effects

ATTACHMENT 3
WALKDOWN CHECKLISTS

Status: ☒ Y ☐ N ☐ U

Seismic Walkdown Checklist (SWC)

Equipment ID No.: 1SV5313A

Equipment Class: (8) Motor-Operated and Solenoid-Operated Valves

Equipment Description: CNTMT PRESS XMITTERS CHAN A

7. Are soft targets free from impact by nearby equipment or structures? Yes

8. Are overhead equipment, distribution systems, ceiling tiles and lighting, and masonry block walls not likely to collapse onto the equipment? Yes

9. Do attached lines have adequate flexibility to avoid damage? Yes

Valve tubing is 1/8" away from PT's conduit. Conduit is flexible and not considered a hard target therefore judged not to be an adversely seismic concern for the SV.

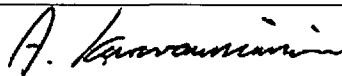
10. Based on the above seismic interaction evaluations, is equipment free of potentially adverse seismic interaction effects? Yes

Other Adverse Conditions

11. Have you looked for and found no adverse seismic conditions that could adversely affect the safety functions of the equipment? Yes

Comments

Evaluated by:



A. Karavoussianis

Date: 11/09/2012



C. Figliolini

11/09/2012

Photos

ATTACHMENT 3

WALKDOWN CHECKLISTS

Status: ☒ Y ☐ N ☐ U

Seismic Walkdown Checklist (SWC)

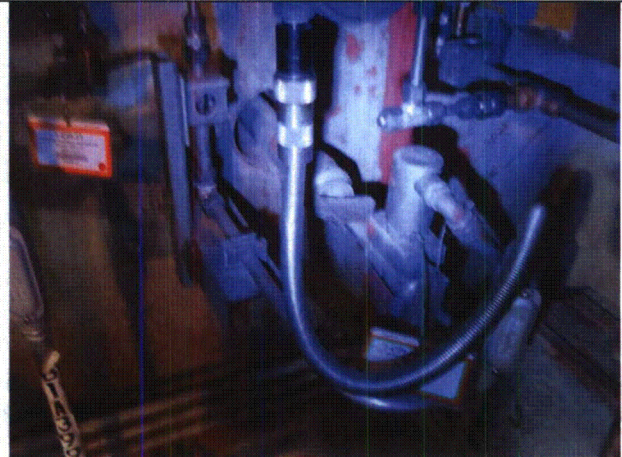
Equipment ID No.: 1SV5313A

Equipment Class: (8) Motor-Operated and Solenoid-Operated Valves

Equipment Description: CNTMT PRESS XMITTERS CHAN A



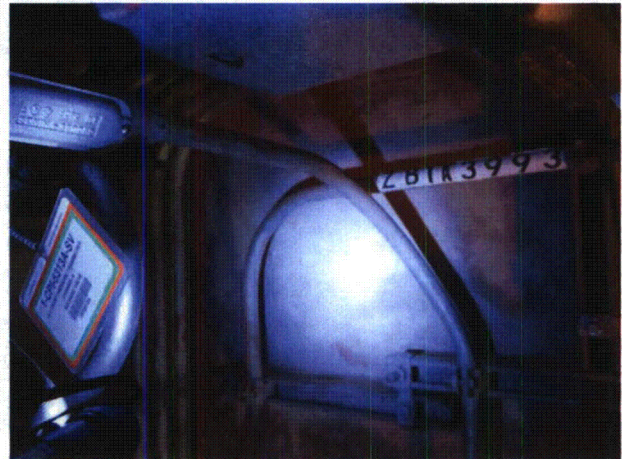
1SV5313A 8-8-12 104



1SV5313A 8-8-12 106



1SV5313A 8-8-12 108



1SV5313A 8-8-12 109

ATTACHMENT 3

WALKDOWN CHECKLISTS

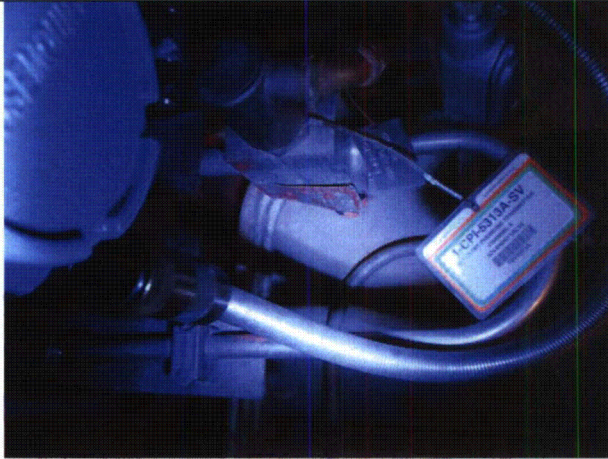
Status: ☒ Y ☐ N ☐ U

Seismic Walkdown Checklist (SWC)

Equipment ID No.: 1SV5313A

Equipment Class: (8) Motor-Operated and Solenoid-Operated Valves

Equipment Description: CNTMT PRESS XMITTERS CHAN A



1SV5313A 8-8-12 113

Status: ☒ Y ☐ N ☐ U

Seismic Walkdown Checklist (SWC)

Equipment ID No.: 1SV5313C

Equipment Class: (8) Motor-Operated and Solenoid-Operated Valves

Equipment Description: CHAN C CTMT PRES XMTR ISOL VLV

Project: CCNPP 1 SWEL

Location (Bldg, Elev, Room/Area): AUX, 45.00 ft, CAL-AB-423

Manufacturer/Model:

Instructions for Completing Checklist

This checklist may be used to document the results of the Seismic Walkdown of an item of equipment on the SWEL. The space below each of the following questions may be used to record the results of judgments and findings. Additional space is provided at the end of this checklist for documenting other comments.

Anchorage

1. Is anchorage configuration verification required (i.e., is the item one of the 50% of SWEL items requiring such verification)? No
2. Is the anchorage free of bent, broken, missing or loose hardware? Not Applicable

ATTACHMENT 3

WALKDOWN CHECKLISTS

Status: ☒ Y ☐ N ☐ U

Seismic Walkdown Checklist (SWC)

Equipment ID No.: 1SV5313C

Equipment Class: (8) Motor-Operated and Solenoid-Operated Valves

Equipment Description: CHAN C CTMT PRES XMTR ISOL VLV

- | | |
|--|----------------|
| 3. Is the anchorage free of corrosion that is more than mild surface oxidation? | Not Applicable |
| 4. Is the anchorage free of visible cracks in the concrete near the anchors? | Not Applicable |
| 5. Is the anchorage configuration consistent with plant documentation? (Note: This question only applies if the item is one of the 50% for which an anchorage configuration verification is required.) | Not Applicable |
| 6. Based on the above anchorage evaluations, is the anchorage free of potentially adverse seismic conditions? | Yes |

Interaction Effects

- | | |
|---|-----|
| 7. Are soft targets free from impact by nearby equipment or structures? | Yes |
| 8. Are overhead equipment, distribution systems, ceiling tiles and lighting, and masonry block walls not likely to collapse onto the equipment? | Yes |
| 9. Do attached lines have adequate flexibility to avoid damage? | Yes |
| 10. Based on the above seismic interaction evaluations, is equipment free of | Yes |
-

ATTACHMENT 3
WALKDOWN CHECKLISTS

Status: ☒ Y ☐ N ☐ U

Seismic Walkdown Checklist (SWC)

Equipment ID No.: 1SV5313C

Equipment Class: (8) Motor-Operated and Solenoid-Operated Valves

Equipment Description: CHAN C CTMT PRES XMTR ISOL VLV

potentially adverse seismic interaction effects?

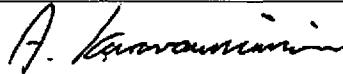
Other Adverse Conditions

11. Have you looked for and found no adverse seismic conditions that could adversely affect the safety functions of the equipment?

Yes

Comments

Evaluated by:



A. Karavoussianis

Date: 11/09/2012



C. Figliolini

11/09/2012

Photos

ATTACHMENT 3

WALKDOWN CHECKLISTS

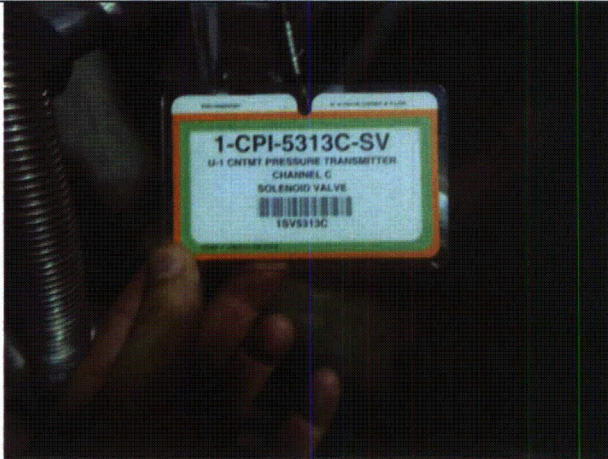
Status: ☒ Y ☐ N ☐ U

Seismic Walkdown Checklist (SWC)

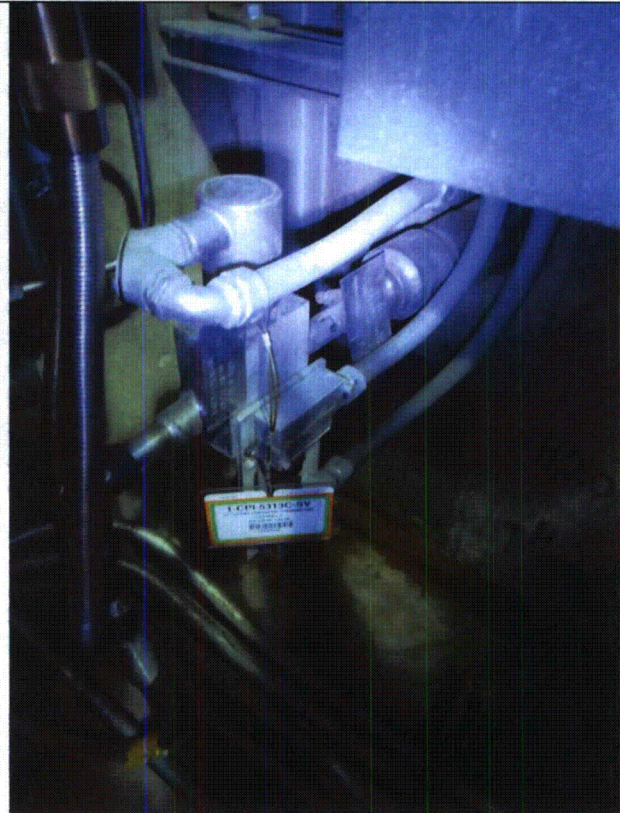
Equipment ID No.: 1SV5313C

Equipment Class: (8) Motor-Operated and Solenoid-Operated Valves

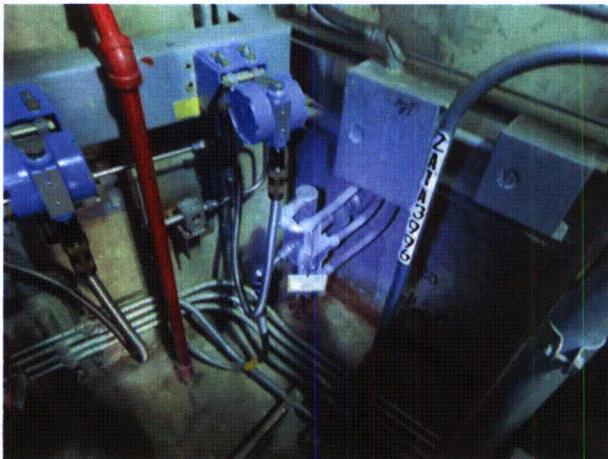
Equipment Description: CHAN C CTMT PRES XMTR ISOL VLV



1SV5313C 8-7-12 012



1SV5313C 8-7-12 015



1SV5313C 8-7-12 017

ATTACHMENT 3

WALKDOWN CHECKLISTS

Status: ☒ Y ☐ N ☐ U

Seismic Walkdown Checklist (SWC)

Equipment ID No.: 1TCV5426-1

Equipment Class: (0) Other

Equipment Description: 11 SWGR HVAC CKT1 THERMAL EXPANSION VALVE

Project: CCNPP 1 SWEL

Location (Bldg, Elev, Room/Area): AUX, 70.00 ft, CAL-AB-524

Manufacturer/Model:

Instructions for Completing Checklist

This checklist may be used to document the results of the Seismic Walkdown of an item of equipment on the SWEL. The space below each of the following questions may be used to record the results of judgments and findings. Additional space is provided at the end of this checklist for documenting other comments.

Anchorage

- | | |
|--|----------------|
| 1. Is anchorage configuration verification required (i.e., is the item one of the 50% of SWEL items requiring such verification)? | No |
| 2. Is the anchorage free of bent, broken, missing or loose hardware? | Not Applicable |
| 3. Is the anchorage free of corrosion that is more than mild surface oxidation? | Not Applicable |
| 4. Is the anchorage free of visible cracks in the concrete near the anchors? | Not Applicable |
| 5. Is the anchorage configuration consistent with plant documentation? (Note: This question only applies if the item is one of the 50% for which an anchorage configuration verification is required.) | Not Applicable |
| 6. Based on the above anchorage evaluations, is the anchorage free of potentially adverse seismic conditions? | Yes |

Interaction Effects

ATTACHMENT 3
WALKDOWN CHECKLISTS

Status: ☒ Y ☐ N ☐ U

Seismic Walkdown Checklist (SWC)

Equipment ID No.: 1TCV5426-1

Equipment Class: (0) Other

Equipment Description: 11 SWGR HVAC CKT1 THERMAL EXPANSION VALVE

- | | | |
|------|--|-----|
| 7. | Are soft targets free from impact by nearby equipment or structures? | Yes |
|
 | | |
| 8. | Are overhead equipment, distribution systems, ceiling tiles and lighting, and masonry block walls not likely to collapse onto the equipment?
<i>If not 2/1 overhead light can fall and hit valve.</i>
<i>10/3/12 - Overhead lights were deemed not a credible seismic concern due to their lightweight and to typical construction practices. Also, they have been previously evaluated by CCNPP and found seismically acceptable.</i> | Yes |
|
 | | |
| 9. | Do attached lines have adequate flexibility to avoid damage?

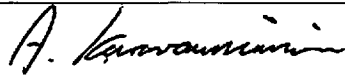
<i>Tubing is supported on same pipe support as valve piping, therefore it is not a seismic concern.</i> | Yes |
|
 | | |
| 10. | Based on the above seismic interaction evaluations, is equipment free of potentially adverse seismic interaction effects? | Yes |

Other Adverse Conditions

- | | | |
|-----|--|-----|
| 11. | Have you looked for and found no adverse seismic conditions that could adversely affect the safety functions of the equipment? | Yes |
|-----|--|-----|

Comments

Evaluated by:



A. Karavoussianis

Date: 11/09/2012



C. Figliolini

11/09/2012

Photos

ATTACHMENT 3

WALKDOWN CHECKLISTS

Status: ☒ Y ☐ N ☐ U

Seismic Walkdown Checklist (SWC)

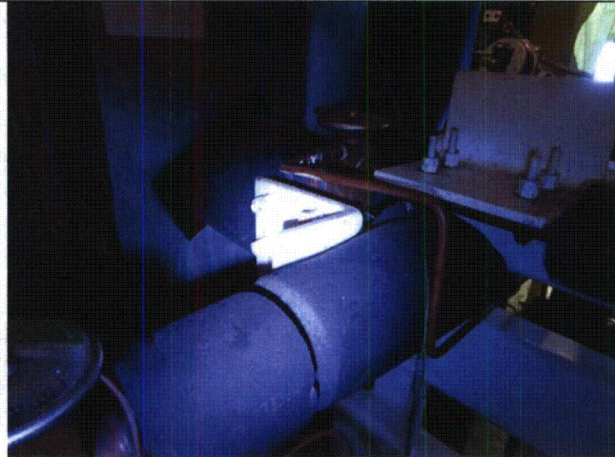
Equipment ID No.: 1TCV5426-1

Equipment Class: (0) Other

Equipment Description: 11 SWGR HVAC CKT1 THERMAL EXPANSION VALVE



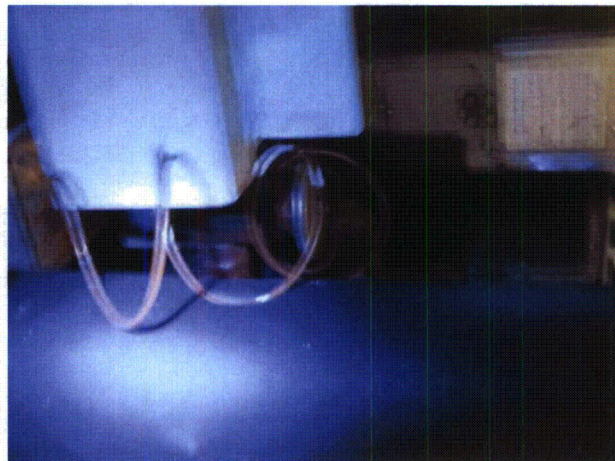
1TCV5426-1 8-10-12 107



1TCV5426-1 8-10-12 108



1TCV5426-1 8-10-12 109



1TCV5426-1 8-10-12 110

ATTACHMENT 3

WALKDOWN CHECKLISTS

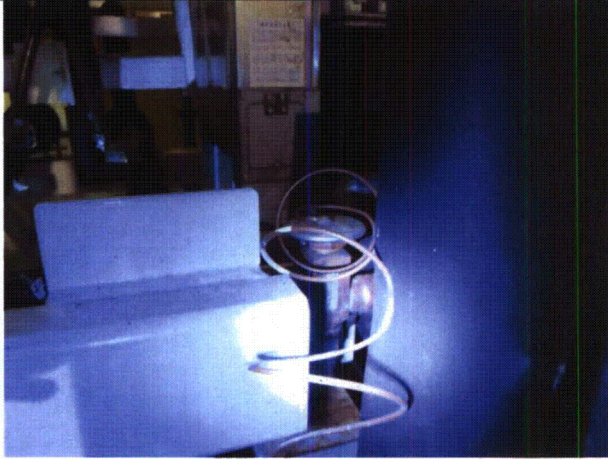
Status: ☒ Y ☐ N ☐ U

Seismic Walkdown Checklist (SWC)

Equipment ID No.: 1TCV5426-1

Equipment Class: (0) Other

Equipment Description: 11 SWGR HVAC CKT1 THERMAL EXPANSION VALVE



1TCV5426-1 8-10-12 111

Status: ☒ Y ☐ N ☐ U

Seismic Walkdown Checklist (SWC)

Equipment ID No.: 1TKBAST11

Equipment Class: (21) Tanks and Heat Exchangers

Equipment Description: 11 BORIC ACID STWG TANK

Project: CCNPP 1 SWEL

Location (Bldg, Elev, Room/Area): AUX, 5.00 ft, CAL-AB-217

Manufacturer/Model:

Instructions for Completing Checklist

This checklist may be used to document the results of the Seismic Walkdown of an item of equipment on the SWEL. The space below each of the following questions may be used to record the results of judgments and findings. Additional space is provided at the end of this checklist for documenting other comments.

Anchorage

1. Is anchorage configuration verification required (i.e., is the item one of the 50% of SWEL items requiring such verification)? Yes
Confirmed anchorage base is consistent with C-013 calc (1-1/2" bolt).
2. Is the anchorage free of bent, broken, missing or loose hardware? Yes

ATTACHMENT 3

WALKDOWN CHECKLISTS

Status: ☒ Y ☐ N ☐ U

Seismic Walkdown Checklist (SWC)

Equipment ID No.: 1TKBAST11

Equipment Class: (21) Tanks and Heat Exchangers

Equipment Description: 11 BORIC ACID STWG TANK

3. Is the anchorage free of corrosion that is more than mild surface oxidation? Yes
4. Is the anchorage free of visible cracks in the concrete near the anchors? Yes
5. Is the anchorage configuration consistent with plant documentation? (Note: This question only applies if the item is one of the 50% for which an anchorage configuration verification is required.) Yes
Verification based on calculation C-013.
Observed: 1-1/4" Bolts, 11" edge distance, 14-1/2" bolt projection, 35" bolt spacing and 12-1/2" pad height. Consistent with calculation.
6. Based on the above anchorage evaluations, is the anchorage free of potentially adverse seismic conditions? Yes
-

Interaction Effects

7. Are soft targets free from impact by nearby equipment or structures? Yes
8. Are overhead equipment, distribution systems, ceiling tiles and lighting, and masonry block walls not likely to collapse onto the equipment? Yes
A trapeze conduit support is in contact with Tank insulation, not an adverse condition.
9. Do attached lines have adequate flexibility to avoid damage? Yes
10. Based on the above seismic interaction evaluations, is equipment free of Yes
-

ATTACHMENT 3

WALKDOWN CHECKLISTS

Status: ☒ Y ☐ N ☐ U

Seismic Walkdown Checklist (SWC)

Equipment ID No.: 1TKBAST11

Equipment Class: (21) Tanks and Heat Exchangers

Equipment Description: 11 BORIC ACID STWG TANK
potentially adverse seismic interaction effects?

Other Adverse Conditions

11. Have you looked for and found no adverse seismic conditions that could adversely affect the safety functions of the equipment? Yes

A junction box support is pinned to floor. The support is approximately 8' tall. There are 2 - 2" conduits running from the JB to a trapeze hanger at the ceiling approximately 20' up. Nearby pipe and support above the JB support will restrain motion, therefore judged not an adverse seismic concern.

Comments

Evaluated by:

A. Karavoussianis

A. Karavoussianis

Date: 11/09/2012

C. Figliolini

C. Figliolini

11/09/2012

Photos



1TKBAST11 8-6-12 030



1TKBAST11 8-6-12 032

ATTACHMENT 3

WALKDOWN CHECKLISTS

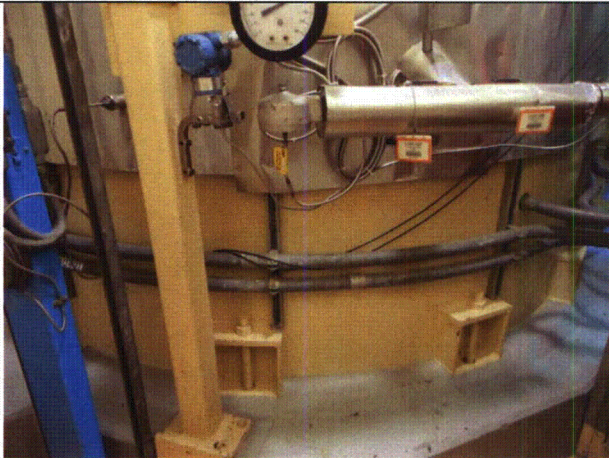
Status: ☒ Y ☐ N ☐ U

Seismic Walkdown Checklist (SWC)

Equipment ID No.: 1TKBAST11

Equipment Class: (21) Tanks and Heat Exchangers

Equipment Description: 11 BORIC ACID STWG TANK



1TKBAST11 8-6-12 033



1TKBAST11 8-6-12 034



1TKBAST11 8-6-12 035



1TKBAST11 8-6-12 036

ATTACHMENT 3

WALKDOWN CHECKLISTS

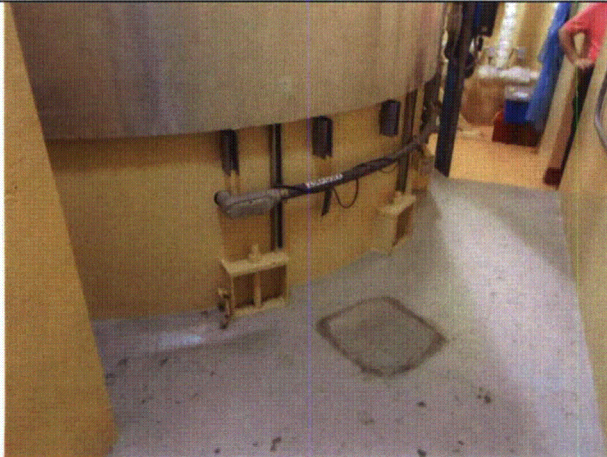
Status: ☒ Y ☐ N ☐ U

Seismic Walkdown Checklist (SWC)

Equipment ID No.: 1TKBAST11

Equipment Class: (21) Tanks and Heat Exchangers

Equipment Description: 11 BORIC ACID STWG TANK



1TKBAST11 8-6-12 037



1TKBAST11 8-6-12 038



1TKBAST11 8-6-12 039



1TKBAST11 8-6-12 041

ATTACHMENT 3

WALKDOWN CHECKLISTS

Status: ☒ Y ☐ N ☐ U

Seismic Walkdown Checklist (SWC)

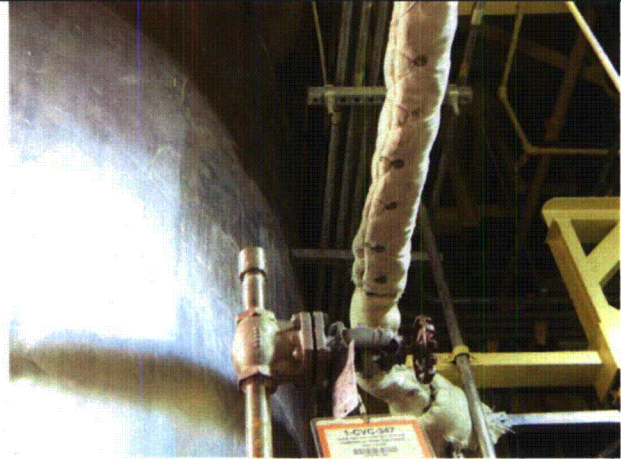
Equipment ID No.: 1TKBAST11

Equipment Class: (21) Tanks and Heat Exchangers

Equipment Description: 11 BORIC ACID STWG TANK



1TKBAST11 8-6-12 042



1TKBAST11 8-6-12 043

ATTACHMENT 3

WALKDOWN CHECKLISTS

Status: ☒ Y ☐ N ☐ U

Seismic Walkdown Checklist (SWC)

Equipment ID No.: 1TKBAST11

Equipment Class: (21) Tanks and Heat Exchangers

Equipment Description: 11 BORIC ACID STWG TANK



1TKBAST11 8-6-12 044



1TKBAST11 8-6-12 045

ATTACHMENT 3

WALKDOWN CHECKLISTS

Status: ☒ Y ☐ N ☐ U

Seismic Walkdown Checklist (SWC)

Equipment ID No.: 1TKCCHD11

Equipment Class: (21) Tanks and Heat Exchangers

Equipment Description: COMPONENT COOLING HEAD TANK

Project: CCNPP 1 SWEL

Location (Bldg, Elev, Room/Area): AUX, 70.00 ft, CAL-AB-525

Manufacturer/Model:

Instructions for Completing Checklist

This checklist may be used to document the results of the Seismic Walkdown of an item of equipment on the SWEL. The space below each of the following questions may be used to record the results of judgments and findings. Additional space is provided at the end of this checklist for documenting other comments.

Anchorage

1. Is anchorage configuration verification required (i.e., is the item one of the 50% of SWEL items requiring such verification)? Yes

2. Is the anchorage free of bent, broken, missing or loose hardware? Yes

3. Is the anchorage free of corrosion that is more than mild surface oxidation? Yes

4. Is the anchorage free of visible cracks in the concrete near the anchors? Yes

5. Is the anchorage configuration consistent with plant documentation? (Note: This question only applies if the item is one of the 50% for which an anchorage configuration verification is required.) Yes
Anchorage is consistent with drawing FSK-C-0389.

6. Based on the above anchorage evaluations, is the anchorage free of potentially adverse seismic conditions? Yes

Interaction Effects

C-526

ATTACHMENT 3

WALKDOWN CHECKLISTS

Status: ☒ Y ☐ N ☐ U

Seismic Walkdown Checklist (SWC)

Equipment ID No.: 1TKCCHD11

Equipment Class: (21) Tanks and Heat Exchangers

Equipment Description: COMPONENT COOLING HEAD TANK

7. Are soft targets free from impact by nearby equipment or structures? Yes
Piping support is in contact with the insulation jacket. The pipe support anchored to the ceiling and the tank to the floor. The differential motion will not affect the tank or piping, therefore judged not to be a seismic concern.
8. Are overhead equipment, distribution systems, ceiling tiles and lighting, and masonry block walls not likely to collapse onto the equipment? Yes
Masonry block walls, identified as L and A12 on drawing A-260, are safety-related and thus seismically rated per IE Bulletin 80-11.
9. Do attached lines have adequate flexibility to avoid damage? Yes
10. Based on the above seismic interaction evaluations, is equipment free of potentially adverse seismic interaction effects? Yes

Other Adverse Conditions

11. Have you looked for and found no adverse seismic conditions that could adversely affect the safety functions of the equipment? Yes
There is a portable ventilation unit on wheels. The wheels are locked and therefore not a seismic condition.

Comments

Evaluated by:

A. Karavoussianis

A. Karavoussianis

Date: 11/09/2012

C. Figliolini

C. Figliolini

11/09/2012

Photos

ATTACHMENT 3

WALKDOWN CHECKLISTS

Status: ☒ Y ☐ N ☐ U

Seismic Walkdown Checklist (SWC)

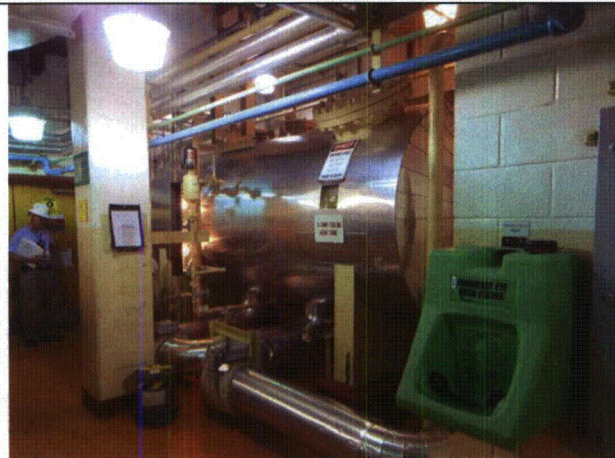
Equipment ID No.: 1TKCCHD11

Equipment Class: (21) Tanks and Heat Exchangers

Equipment Description: COMPONENT COOLING HEAD TANK



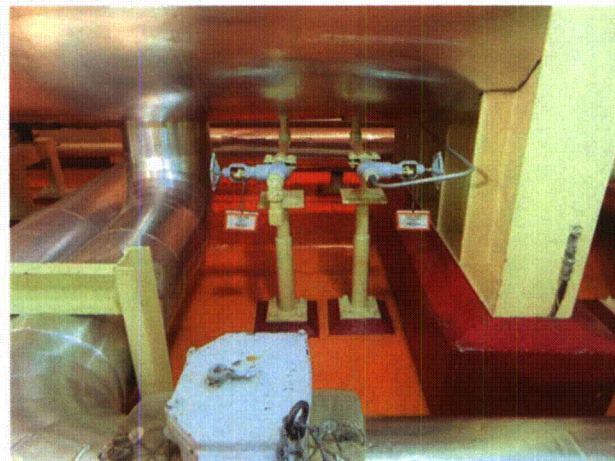
1TKCCHD11 8-9-12 118



1TKCCHD11 8-9-12 119



1TKCCHD11 8-9-12 120



1TKCCHD11 8-9-12 121

ATTACHMENT 3

WALKDOWN CHECKLISTS

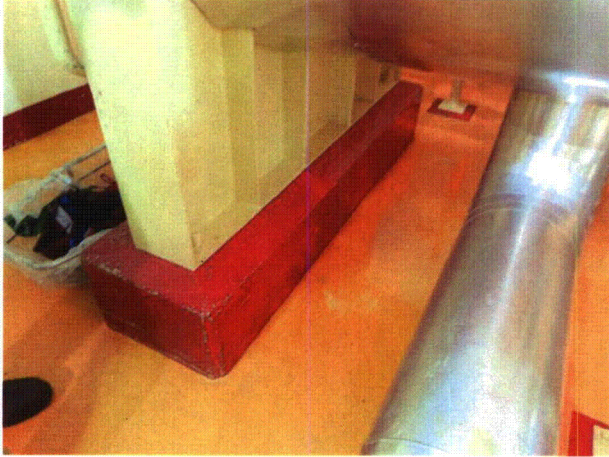
Status: ☒ Y ☐ N ☐ U

Seismic Walkdown Checklist (SWC)

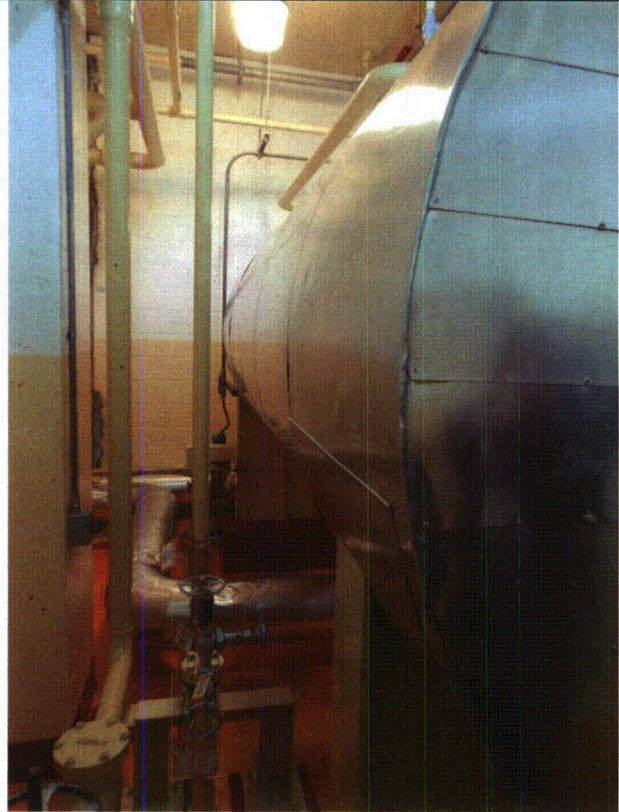
Equipment ID No.: 1TKCCHD11

Equipment Class: (21) Tanks and Heat Exchangers

Equipment Description: COMPONENT COOLING HEAD TANK



1TKCCHD11 8-9-12 122



1TKCCHD11 8-9-12 123

ATTACHMENT 3

WALKDOWN CHECKLISTS

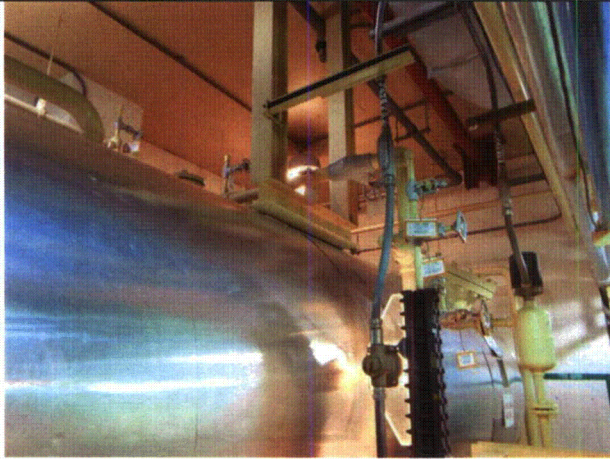
Status: ☒ Y ☐ N ☐ U

Seismic Walkdown Checklist (SWC)

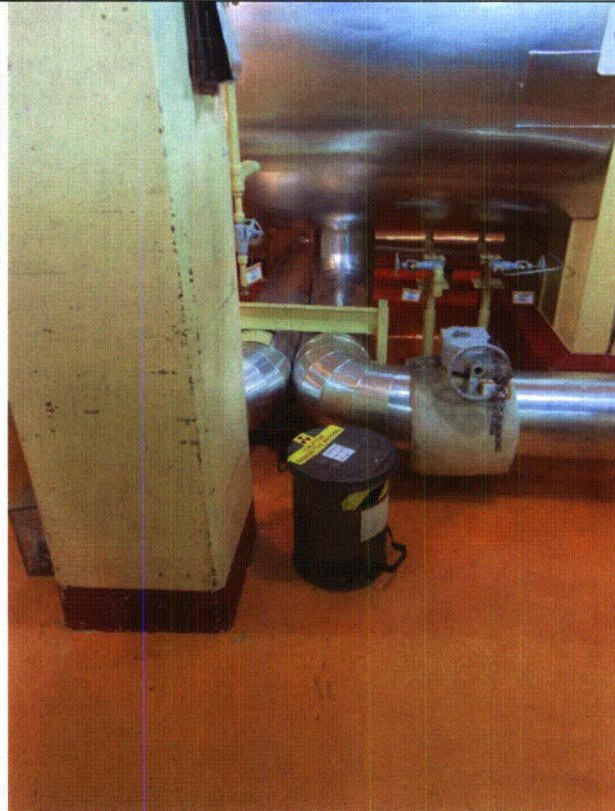
Equipment ID No.: 1TKCCHD11

Equipment Class: (21) Tanks and Heat Exchangers

Equipment Description: COMPONENT COOLING HEAD TANK



1TKCCHD11 8-9-12 124



1TKCCHD11 8-9-12 127

ATTACHMENT 3

WALKDOWN CHECKLISTS

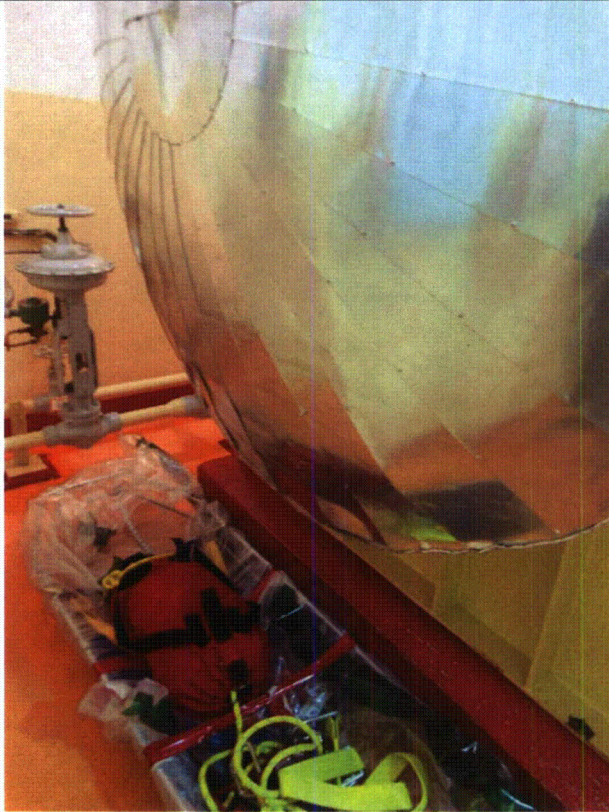
Status: ☒ Y ☐ N ☐ U

Seismic Walkdown Checklist (SWC)

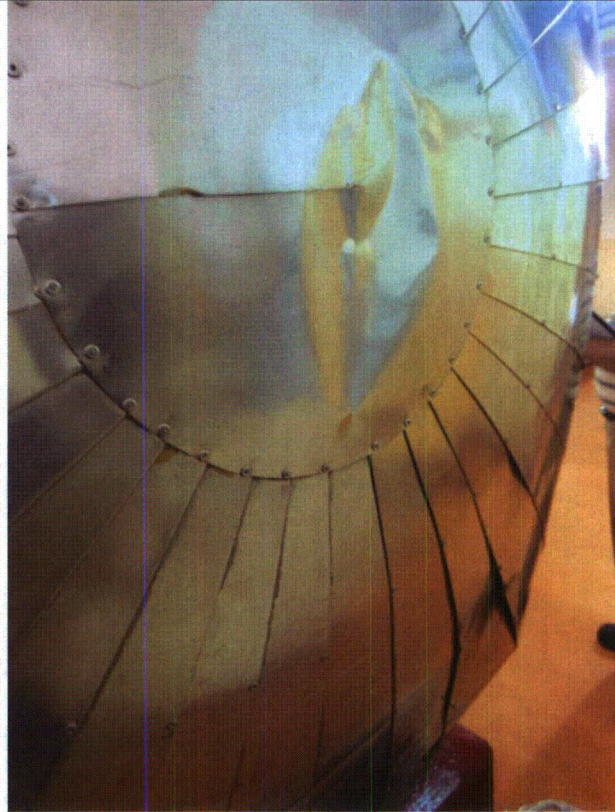
Equipment ID No.: 1TKCCHD11

Equipment Class: (21) Tanks and Heat Exchangers

Equipment Description: COMPONENT COOLING HEAD TANK



1TKCCHD11 8-9-12 128



1TKCCHD11 8-9-12 129

ATTACHMENT 3

WALKDOWN CHECKLISTS

Status: ☒ Y ☐ N ☐ U

Seismic Walkdown Checklist (SWC)

Equipment ID No.: 1TKCDSTG12

Equipment Class: (21) Tanks and Heat Exchangers

Equipment Description: 12 COND STORAGE TK FOR AFW SYSTEM

Project: CCNPP 1 SWEL

Location (Bldg, Elev, Room/Area): Yard, 45.00 ft, CAL-TKFROOM

Manufacturer/Model:

Instructions for Completing Checklist

This checklist may be used to document the results of the Seismic Walkdown of an item of equipment on the SWEL. The space below each of the following questions may be used to record the results of judgments and findings. Additional space is provided at the end of this checklist for documenting other comments.

Anchorage

1. Is anchorage configuration verification required (i.e., is the item one of the 50% of SWEL items requiring such verification)? Yes

2. Is the anchorage free of bent, broken, missing or loose hardware? Yes

3. Is the anchorage free of corrosion that is more than mild surface oxidation? Yes

4. Is the anchorage free of visible cracks in the concrete near the anchors? Yes

5. Is the anchorage configuration consistent with plant documentation? (Note: This question only applies if the item is one of the 50% for which an anchorage configuration verification is required.) Yes
Anchored by 36 - 1 3/8" bolts with an approximate 12" projection and 43" chord. Anchorage is consistent with drawing 12329C-0012.

6. Based on the above anchorage evaluations, is the anchorage free of potentially adverse seismic conditions? Yes

Interaction Effects

C-532

ATTACHMENT 3

WALKDOWN CHECKLISTS

Status: ☒ Y ☐ N ☐ U

Seismic Walkdown Checklist (SWC)

Equipment ID No.: 1TKCDSTG12

Equipment Class: (21) Tanks and Heat Exchangers

Equipment Description: 12 COND STORAGE TK FOR AFW SYSTEM

7. Are soft targets free from impact by nearby equipment or structures? Yes

8. Are overhead equipment, distribution systems, ceiling tiles and lighting, and masonry block walls not likely to collapse onto the equipment? Yes

9. Do attached lines have adequate flexibility to avoid damage? Yes

Line with valve OHVCO-1015 is supported 16" from the tank and line with valve OHVOW 284 is supported 51" from the tank. Need to determine if there is adequate flexibility in these lines. CR-2012-009632 (OHVDW284) & CR-2012-009635 (OHVCD1015)

10/29/12 - Tank anchor bolt elongation:

Bolt Dia. = 1.375 in; Area, A = 1.485 in²

Bolt Length, L = 48 in; E = 29000 ksi,

Load, P = 50.4 kip, based on GIP Appendix C

Elongation = PL/(EA) = 0.05618 in < 1/16"

The potential differential movement between the tank and adjacent pipe supports is less than 1/16". Given, the flexibility of the tank shell and pipe supports, the potential 1/16" differential motion is judged not to be a seismic concern.

10. Based on the above seismic interaction evaluations, is equipment free of potentially adverse seismic interaction effects? Yes

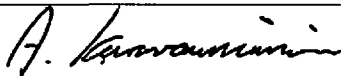
Other Adverse Conditions

11. Have you looked for and found no adverse seismic conditions that could adversely affect the safety functions of the equipment? Yes

Corrosion on conduit support base clip angles, judged not to be a seismic concern.

Comments

Evaluated by:



A. Karavoussianis

Date: 11/09/2012

ATTACHMENT 3

WALKDOWN CHECKLISTS

Status: ☒ Y ☐ N ☐ U

Seismic Walkdown Checklist (SWC)

Equipment ID No.: 1TKCDSTG12

Equipment Class: (21) Tanks and Heat Exchangers

Equipment Description: 12 COND STORAGE TK FOR AFW SYSTEM



C. Figliolini

11/09/2012

Photos



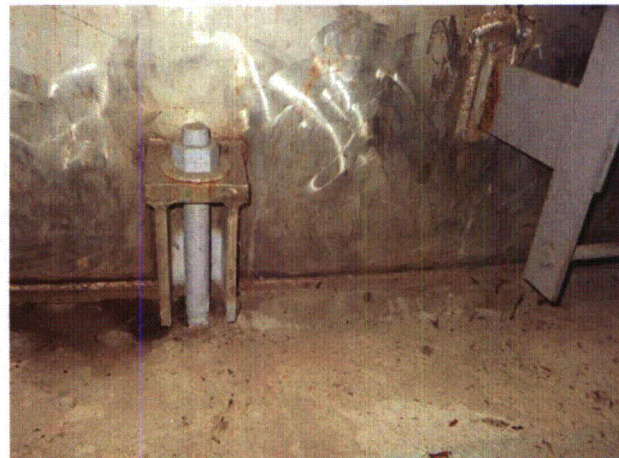
1TKCDSTG12 8-15-12 001



1TKCDSTG12 8-15-12 003



1TKCDSTG12 8-15-12 004



1TKCDSTG12 8-15-12 005

ATTACHMENT 3

WALKDOWN CHECKLISTS

Status: ☒ Y ☐ N ☐ U

Seismic Walkdown Checklist (SWC)

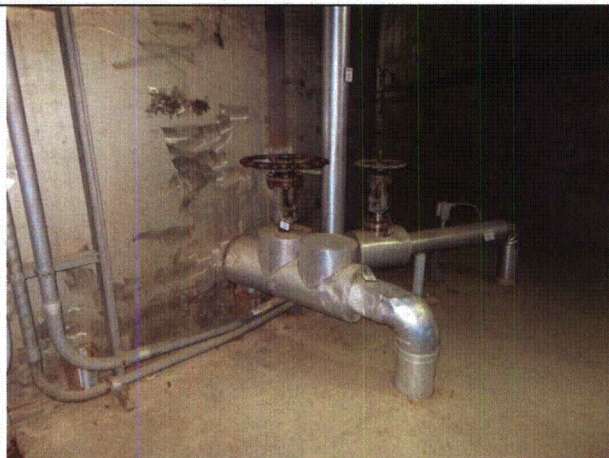
Equipment ID No.: 1TKCDSTG12

Equipment Class: (21) Tanks and Heat Exchangers

Equipment Description: 12 COND STORAGE TK FOR AFW SYSTEM



1TKCDSTG12 8-15-12 006



1TKCDSTG12 8-15-12 007



1TKCDSTG12 8-15-12 008



1TKCDSTG12 8-15-12 009

ATTACHMENT 3

WALKDOWN CHECKLISTS

Status: ☒ Y ☐ N ☐ U

Seismic Walkdown Checklist (SWC)

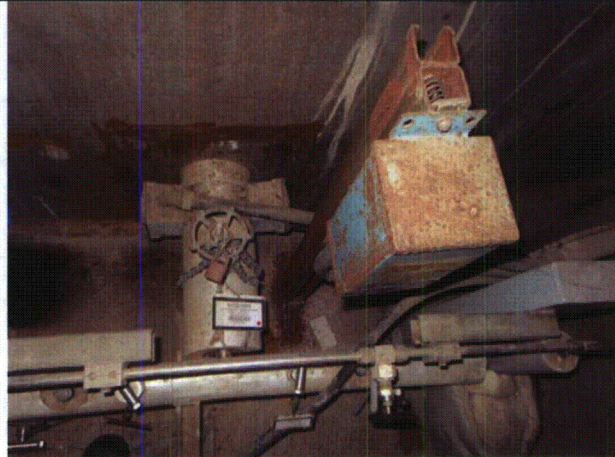
Equipment ID No.: 1TKCDSTG12

Equipment Class: (21) Tanks and Heat Exchangers

Equipment Description: 12 COND STORAGE TK FOR AFW SYSTEM



1TKCDSTG12 8-15-12 010



1TKCDSTG12 8-15-12 011

ATTACHMENT 3

WALKDOWN CHECKLISTS

Status: ☒ Y ☐ N ☐ U

Seismic Walkdown Checklist (SWC)

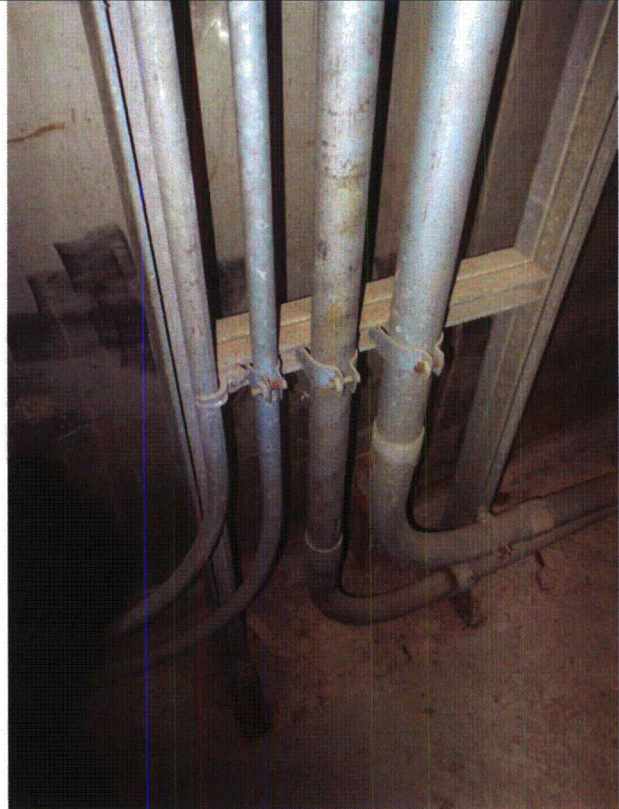
Equipment ID No.: 1TKCDSTG12

Equipment Class: (21) Tanks and Heat Exchangers

Equipment Description: 12 COND STORAGE TK FOR AFW SYSTEM



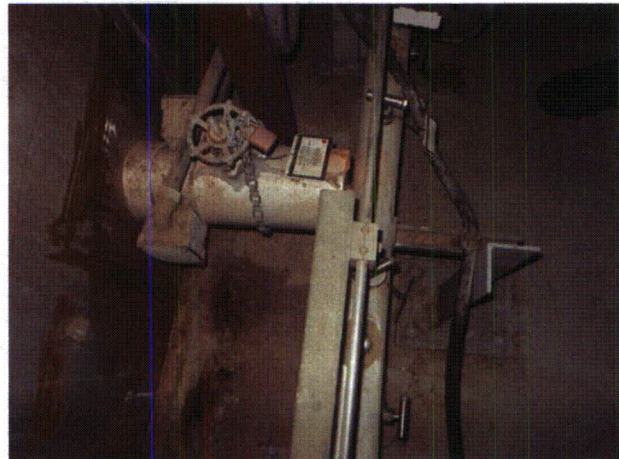
1TKCDSTG12 8-15-12 012



1TKCDSTG12 8-15-12 013



1TKCDSTG12 8-15-12 014



1TKCDSTG12 8-15-12 016

ATTACHMENT 3

WALKDOWN CHECKLISTS

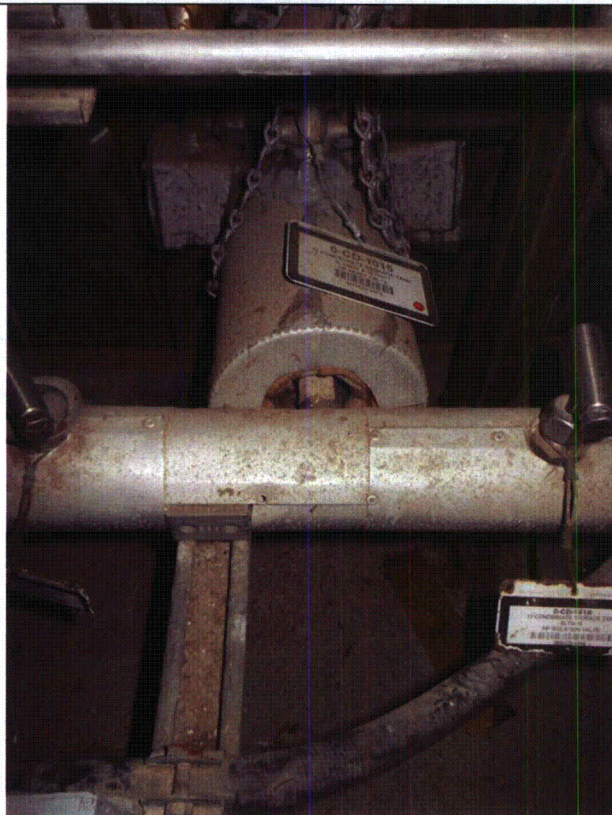
Status: ☒ Y ☐ N ☐ U

Seismic Walkdown Checklist (SWC)

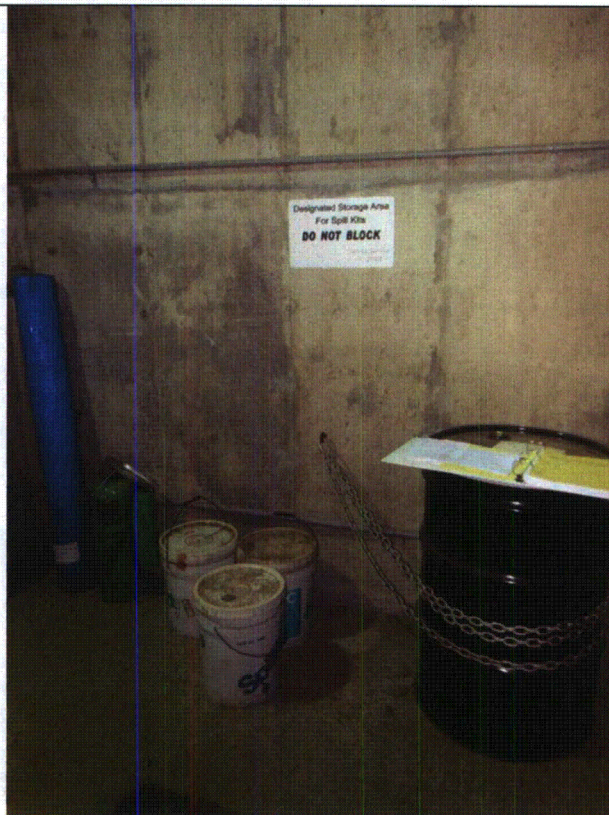
Equipment ID No.: 1TKCDSTG12

Equipment Class: (21) Tanks and Heat Exchangers

Equipment Description: 12 COND STORAGE TK FOR AFW SYSTEM



1TKCDSTG12 8-15-12 017



1TKCDSTG12 8-15-12 018

ATTACHMENT 3

WALKDOWN CHECKLISTS

Status: ☒ Y ☐ N ☐ U

Seismic Walkdown Checklist (SWC)

Equipment ID No.: 1TKDFO10025

Equipment Class: (21) Tanks and Heat Exchangers

Equipment Description: 1A DFO STORAGE TK

Project: CCNPP 1 SWEL

Location (Bldg, Elev, Room/Area): DG, 45.00 ft, CAL-DGB1-DB106

Manufacturer/Model:

Instructions for Completing Checklist

This checklist may be used to document the results of the Seismic Walkdown of an item of equipment on the SWEL. The space below each of the following questions may be used to record the results of judgments and findings. Additional space is provided at the end of this checklist for documenting other comments.

Anchorage

1. Is anchorage configuration verification required (i.e., is the item one of the 50% of SWEL items requiring such verification)? No
2. Is the anchorage free of bent, broken, missing or loose hardware? Yes
3. Is the anchorage free of corrosion that is more than mild surface oxidation? Yes
Only surface oxidation is present, therefore not a concern.
4. Is the anchorage free of visible cracks in the concrete near the anchors? Yes
Minor surface finish concrete hairline cracks approximately 1" to 3" long, therefore not a concern.
5. Is the anchorage configuration consistent with plant documentation? (Note: This question only applies if the item is one of the 50% for which an anchorage configuration verification is required.) Not Applicable
6. Based on the above anchorage evaluations, is the anchorage free of potentially adverse seismic conditions? Yes

Interaction Effects

ATTACHMENT 3
WALKDOWN CHECKLISTS

Status: ☒ Y ☐ N ☐ U

Seismic Walkdown Checklist (SWC)

Equipment ID No.: 1TKDFO10025

Equipment Class: (21) Tanks and Heat Exchangers

Equipment Description: 1A DFO STORAGE TK

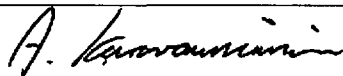
-
- | | |
|---|-----|
| 7. Are soft targets free from impact by nearby equipment or structures? | Yes |
|
 | |
| 8. Are overhead equipment, distribution systems, ceiling tiles and lighting, and masonry block walls not likely to collapse onto the equipment? | Yes |
|
 | |
| 9. Do attached lines have adequate flexibility to avoid damage? | Yes |
|
 | |
| 10. Based on the above seismic interaction evaluations, is equipment free of potentially adverse seismic interaction effects? | Yes |
-

Other Adverse Conditions

- | | |
|--|-----|
| 11. Have you looked for and found no adverse seismic conditions that could adversely affect the safety functions of the equipment? | Yes |
|--|-----|
-

Comments

Evaluated by:



A. Karavoussianis

Date: 11/09/2012



C. Figliolini

11/09/2012

Photos

ATTACHMENT 3

WALKDOWN CHECKLISTS

Status: ☒ Y ☐ N ☐ U

Seismic Walkdown Checklist (SWC)

Equipment ID No.: 1TKDFO10025

Equipment Class: (21) Tanks and Heat Exchangers

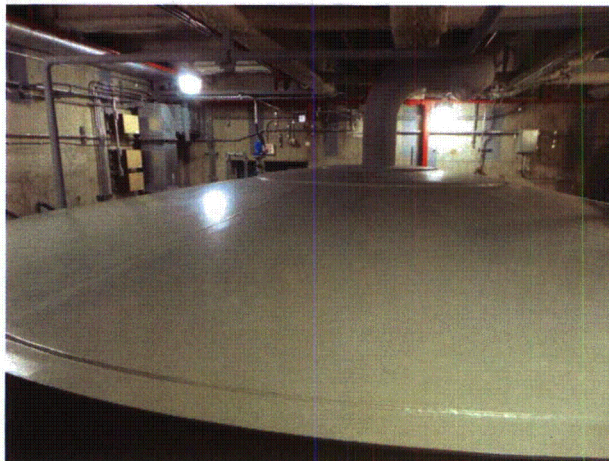
Equipment Description: 1A DFO STORAGE TK



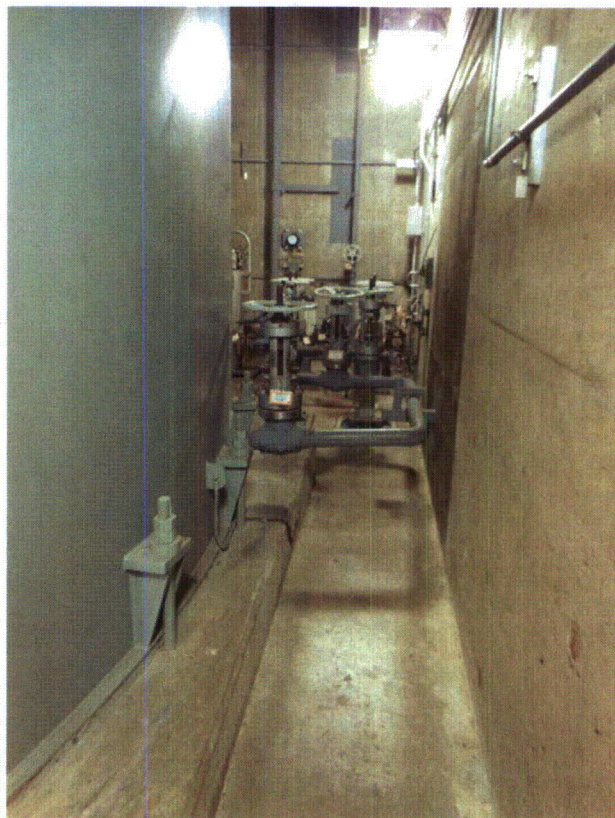
1TKDFO10025 8-15-12 066



1TKDFO10025 8-15-12 067



1TKDFO10025 8-15-12 068



1TKDFO10025 8-15-12 069

ATTACHMENT 3

WALKDOWN CHECKLISTS

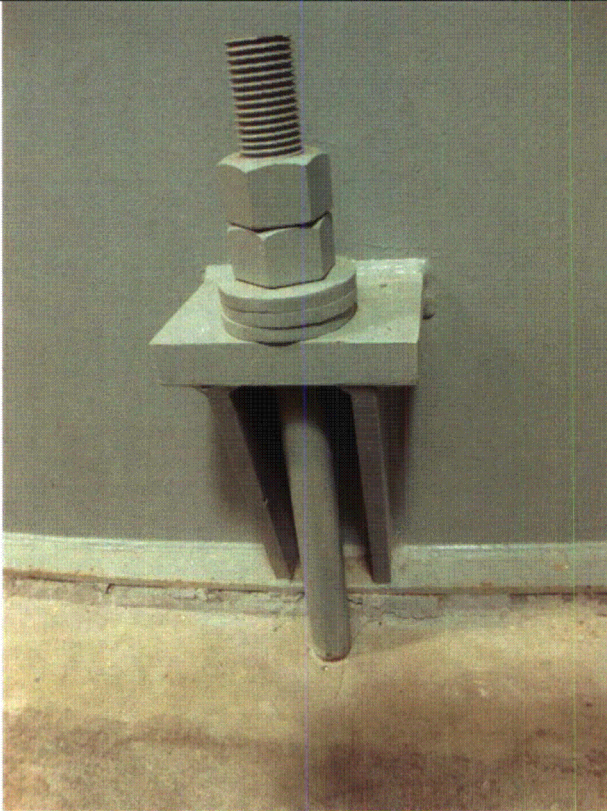
Status: ☒ Y ☐ N ☐ U

Seismic Walkdown Checklist (SWC)

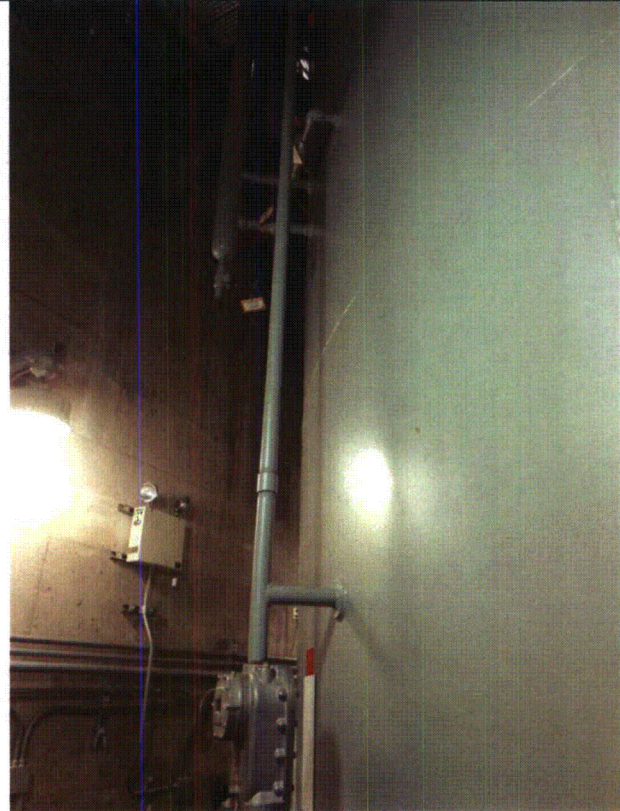
Equipment ID No.: 1TKDFO10025

Equipment Class: (21) Tanks and Heat Exchangers

Equipment Description: 1A DFO STORAGE TK



1TKDFO10025 8-15-12 070



1TKDFO10025 8-15-12 071

ATTACHMENT 3

WALKDOWN CHECKLISTS

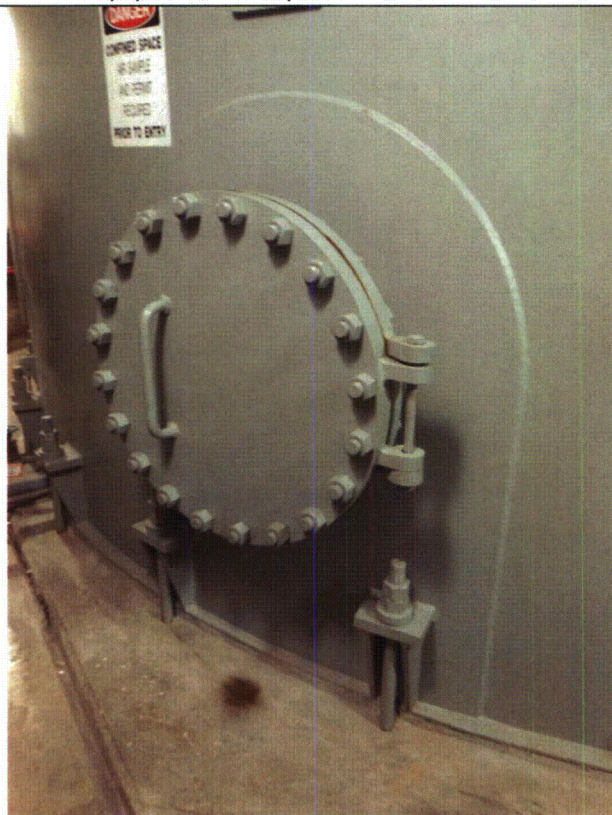
Status: ☒ Y ☐ N ☐ U

Seismic Walkdown Checklist (SWC)

Equipment ID No.: 1TKDFO10025

Equipment Class: (21) Tanks and Heat Exchangers

Equipment Description: 1A DFO STORAGE TK



1TKDFO10025 8-15-12 072



1TKDFO10025 8-15-12 073

ATTACHMENT 3

WALKDOWN CHECKLISTS

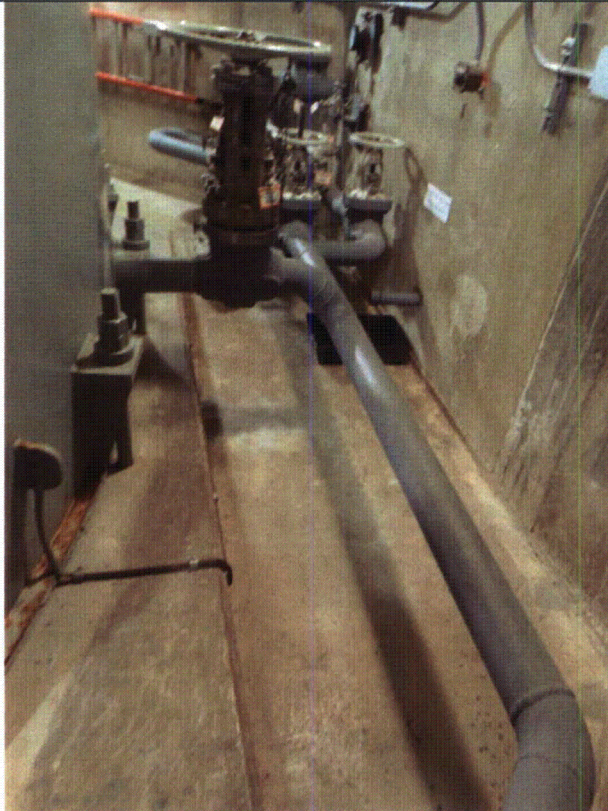
Status: ☒ Y ☐ N ☐ U

Seismic Walkdown Checklist (SWC)

Equipment ID No.: 1TKDFO10025

Equipment Class: (21) Tanks and Heat Exchangers

Equipment Description: 1A DFO STORAGE TK



1TKDFO10025 8-15-12 074



1TKDFO10025 8-15-12 075



1TKDFO10025 8-15-12 076

ATTACHMENT 3

WALKDOWN CHECKLISTS

Status: Y ☒ N ☐ U

Seismic Walkdown Checklist (SWC)

Equipment ID No.: 1TKRWT11

Equipment Class: (21) Tanks and Heat Exchangers

Equipment Description: REFUELING WATER TANK 11

Project: CCNPP 1 SWEL

Location (Bldg, Elev, Room/Area): AUX, 45.00 ft, CAL-AB-439

Manufacturer/Model:

Instructions for Completing Checklist

This checklist may be used to document the results of the Seismic Walkdown of an item of equipment on the SWEL. The space below each of the following questions may be used to record the results of judgments and findings. Additional space is provided at the end of this checklist for documenting other comments.

Anchorage

1. Is anchorage configuration verification required (i.e., is the item one of the 50% of SWEL items requiring such verification)? Yes
2. Is the anchorage free of bent, broken, missing or loose hardware? Yes
3. Is the anchorage free of corrosion that is more than mild surface oxidation? No
There is corrosion at the base of some anchor bolts, one bolt has extensive corrosion. CR-2012-008384
4. Is the anchorage free of visible cracks in the concrete near the anchors? No
Cracking in the concrete pad was observed near, at least, 3 anchor bolts. CR-2012-010257
5. Is the anchorage configuration consistent with plant documentation? (Note: This question only applies if the item is one of the 50% for which an anchorage configuration verification is required.) Yes
Anchorage is consistent with drawing 12329B-0001
6. Based on the above anchorage evaluations, is the anchorage free of potentially adverse seismic conditions? No

Interaction Effects

C-545

ATTACHMENT 3
WALKDOWN CHECKLISTS

Status: Y ☒ N ☐ U

Seismic Walkdown Checklist (SWC)

Equipment ID No.: 1TKRWT11

Equipment Class: (21) Tanks and Heat Exchangers

Equipment Description: REFUELING WATER TANK 11

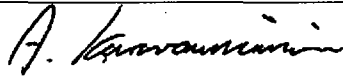
-
- | | | |
|------|--|-----|
| 7. | Are soft targets free from impact by nearby equipment or structures? | Yes |
|
 | | |
| 8. | Are overhead equipment, distribution systems, ceiling tiles and lighting, and masonry block walls not likely to collapse onto the equipment? | Yes |
|
 | | |
| 9. | Do attached lines have adequate flexibility to avoid damage? | Yes |
|
 | | |
| 10. | Based on the above seismic interaction evaluations, is equipment free of potentially adverse seismic interaction effects? | Yes |
-

Other Adverse Conditions

- | | | |
|-----|--|-----|
| 11. | Have you looked for and found no adverse seismic conditions that could adversely affect the safety functions of the equipment? | Yes |
|-----|--|-----|
-

Comments

Evaluated by:



A. Karavoussianis

Date: 11/09/2012



C. Figliolini

11/09/2012

Photos

ATTACHMENT 3

WALKDOWN CHECKLISTS

Status: Y ☒ N ☐ U

Seismic Walkdown Checklist (SWC)

Equipment ID No.: 1TKRWT11

Equipment Class: (21) Tanks and Heat Exchangers

Equipment Description: REFUELING WATER TANK 11



1TKRWT11 8-13-12 253



1TKRWT11 8-13-12 254

ATTACHMENT 3

WALKDOWN CHECKLISTS

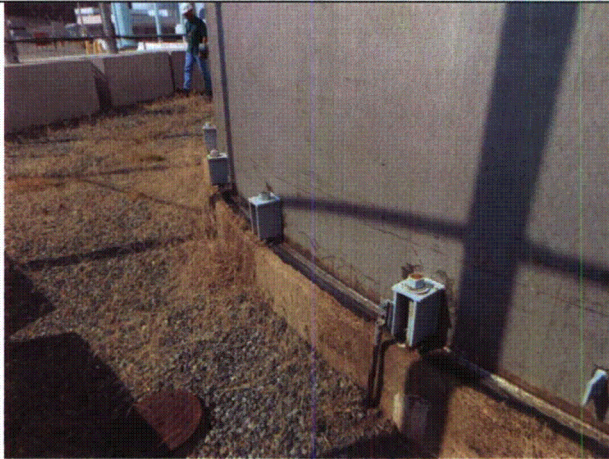
Status: Y ☒ N ☐ U

Seismic Walkdown Checklist (SWC)

Equipment ID No.: 1TKRWT11

Equipment Class: (21) Tanks and Heat Exchangers

Equipment Description: REFUELING WATER TANK 11



1TKRWT11 8-13-12 255



1TKRWT11 8-13-12 256

ATTACHMENT 3

WALKDOWN CHECKLISTS

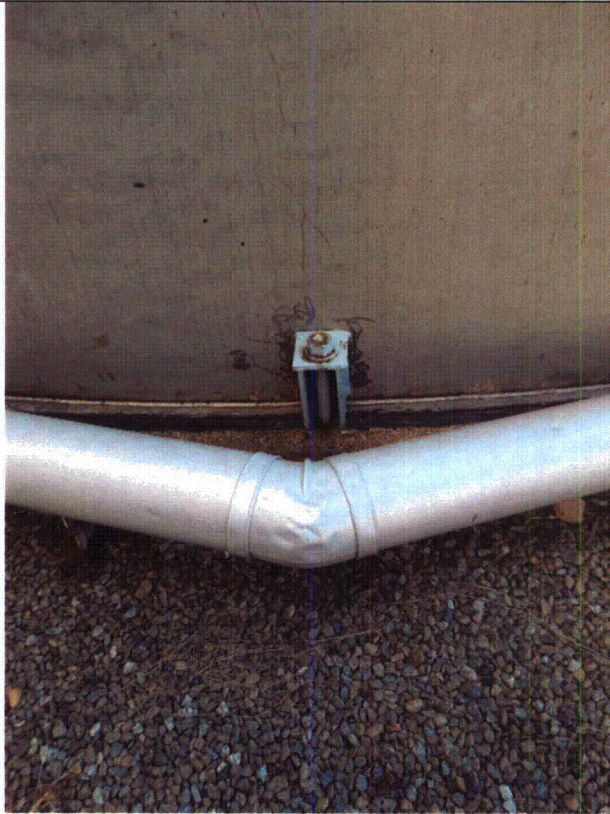
Status: Y ☒ N ☐ U

Seismic Walkdown Checklist (SWC)

Equipment ID No.: 1TKRWT11

Equipment Class: (21) Tanks and Heat Exchangers

Equipment Description: REFUELING WATER TANK 11



1TKRWT11 8-13-12 257



1TKRWT11 8-13-12 258

ATTACHMENT 3

WALKDOWN CHECKLISTS

Status: Y ☒ N ☐ U

Seismic Walkdown Checklist (SWC)

Equipment ID No.: 1TKRWT11

Equipment Class: (21) Tanks and Heat Exchangers

Equipment Description: REFUELING WATER TANK 11



1TKRWT11 8-13-12 259



1TKRWT11 8-13-12 260

ATTACHMENT 3

WALKDOWN CHECKLISTS

Status: Y ☒ N ☐ U

Seismic Walkdown Checklist (SWC)

Equipment ID No.: 1TKRWT11

Equipment Class: (21) Tanks and Heat Exchangers

Equipment Description: REFUELING WATER TANK 11



1TKRWT11 8-13-12 261



1TKRWT11 8-13-12 262

ATTACHMENT 3

WALKDOWN CHECKLISTS

Status: Y ☒ N ☐ U

Seismic Walkdown Checklist (SWC)

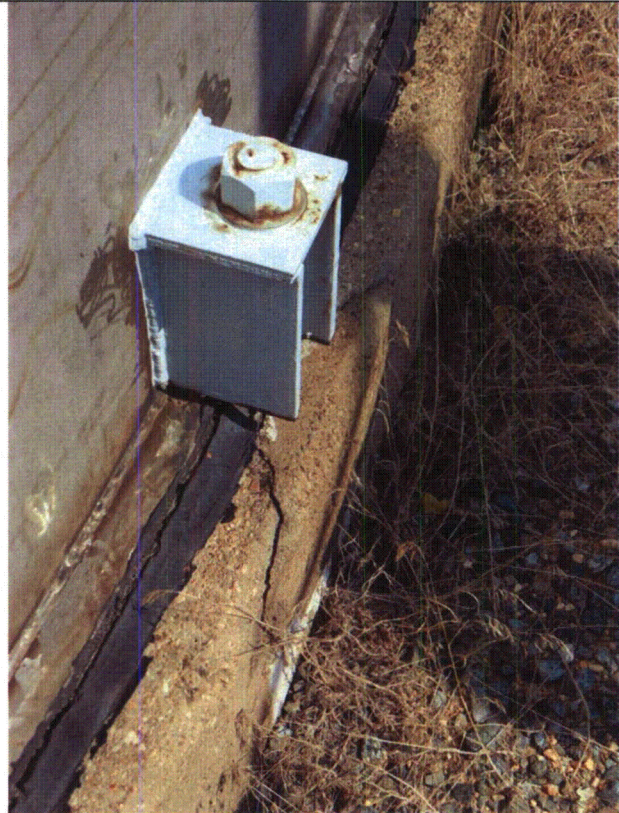
Equipment ID No.: 1TKRWT11

Equipment Class: (21) Tanks and Heat Exchangers

Equipment Description: REFUELING WATER TANK 11



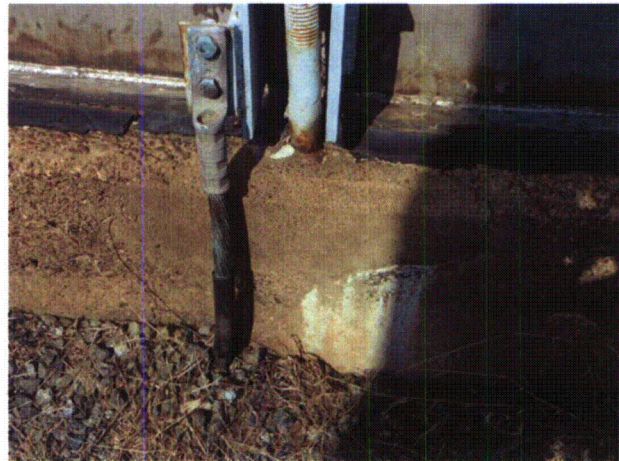
1TKRWT11 8-13-12 263



1TKRWT11 8-13-12 264



1TKRWT11 8-13-12 265



1TKRWT11 8-13-12 266

ATTACHMENT 3

WALKDOWN CHECKLISTS

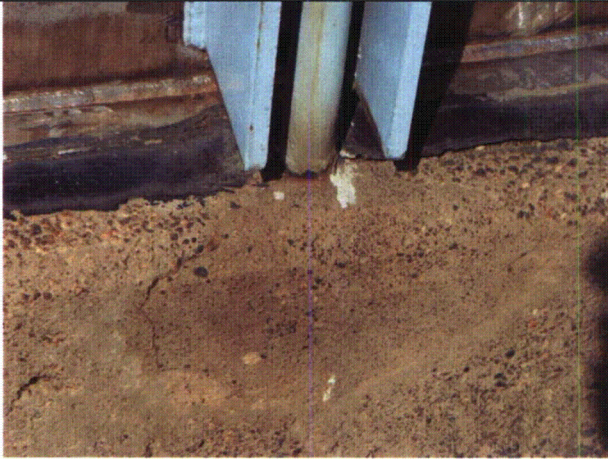
Status: Y ☒ N ☐ U

Seismic Walkdown Checklist (SWC)

Equipment ID No.: 1TKRWT11

Equipment Class: (21) Tanks and Heat Exchangers

Equipment Description: REFUELING WATER TANK 11



1TKRWT11 8-13-12 267

ATTACHMENT 3

WALKDOWN CHECKLISTS

Status: ☒ Y ☐ N ☐ U

Seismic Walkdown Checklist (SWC)

Equipment ID No.: 1TKSRWHD11

Equipment Class: (21) Tanks and Heat Exchangers

Equipment Description: SERVICE WATER HEAD TANK 11

Project: CCNPP 1 SWEL

Location (Bldg, Elev, Room/Area): AUX, 70.00 ft, CAL-AB-524

Manufacturer/Model:

Instructions for Completing Checklist

This checklist may be used to document the results of the Seismic Walkdown of an item of equipment on the SWEL. The space below each of the following questions may be used to record the results of judgments and findings. Additional space is provided at the end of this checklist for documenting other comments.

Anchorage

1. Is anchorage configuration verification required (i.e., is the item one of the 50% of SWEL items requiring such verification)? No
2. Is the anchorage free of bent, broken, missing or loose hardware? Yes
3. Is the anchorage free of corrosion that is more than mild surface oxidation? Yes
4. Is the anchorage free of visible cracks in the concrete near the anchors? Yes
5. Is the anchorage configuration consistent with plant documentation? (Note: This question only applies if the item is one of the 50% for which an anchorage configuration verification is required.) Not Applicable
6. Based on the above anchorage evaluations, is the anchorage free of potentially adverse seismic conditions? Yes

Interaction Effects

ATTACHMENT 3
WALKDOWN CHECKLISTS

Status: ☒ Y ☐ N ☐ U

Seismic Walkdown Checklist (SWC)

Equipment ID No.: 1TKSRWHD11

Equipment Class: (21) Tanks and Heat Exchangers

Equipment Description: SERVICE WATER HEAD TANK 11

7. Are soft targets free from impact by nearby equipment or structures? Yes

Overhead light may strike sight glasses.

10/3/12 - Overhead lights were deemed not a credible seismic concern due to their lightweight and to typical construction practices. Also, they have been previously evaluated by CCNPP and found seismically acceptable.

8. Are overhead equipment, distribution systems, ceiling tiles and lighting, and masonry block walls not likely to collapse onto the equipment? Yes

9. Do attached lines have adequate flexibility to avoid damage? Yes

Tubing to the valve and instrumentation has adequate flexibility, therefore judged not to be a seismic concern.

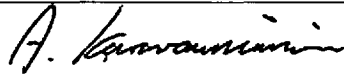
10. Based on the above seismic interaction evaluations, is equipment free of potentially adverse seismic interaction effects? Yes

Other Adverse Conditions

11. Have you looked for and found no adverse seismic conditions that could adversely affect the safety functions of the equipment? Yes

Comments

Evaluated by:



A. Karavoussianis

Date: 11/09/2012



C. Figliolini

11/09/2012

Photos

ATTACHMENT 3

WALKDOWN CHECKLISTS

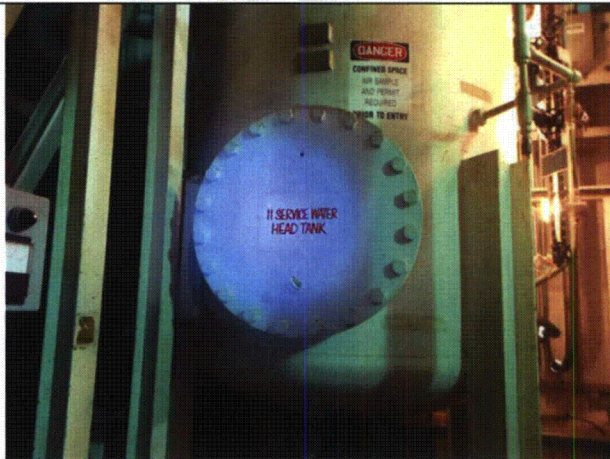
Status: ☒ Y ☐ N ☐ U

Seismic Walkdown Checklist (SWC)

Equipment ID No.: 1TKSRWHD11

Equipment Class: (21) Tanks and Heat Exchangers

Equipment Description: SERVICE WATER HEAD TANK 11



1TKSRWHD11 8-10-12 093



1TKSRWHD11 8-10-12 094

ATTACHMENT 3

WALKDOWN CHECKLISTS

Status: ☒ Y ☐ N ☐ U

Seismic Walkdown Checklist (SWC)

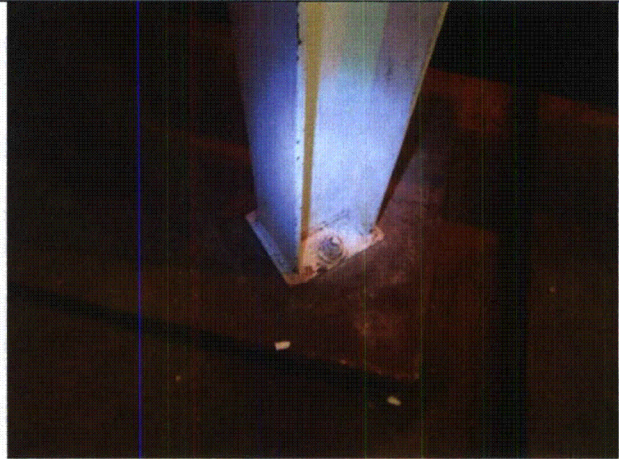
Equipment ID No.: 1TKSRWHD11

Equipment Class: (21) Tanks and Heat Exchangers

Equipment Description: SERVICE WATER HEAD TANK 11



1TKSRWHD11 8-10-12 095



1TKSRWHD11 8-10-12 096

ATTACHMENT 3

WALKDOWN CHECKLISTS

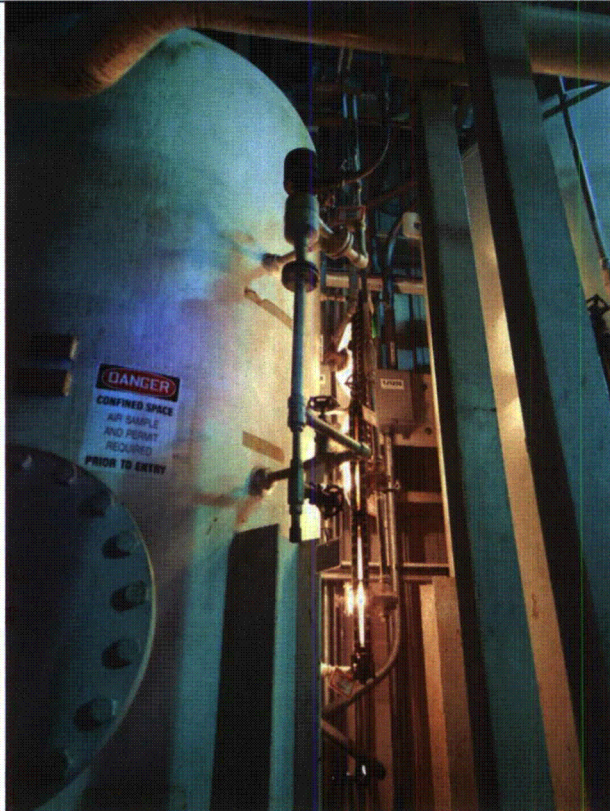
Status: ☒ Y ☐ N ☐ U

Seismic Walkdown Checklist (SWC)

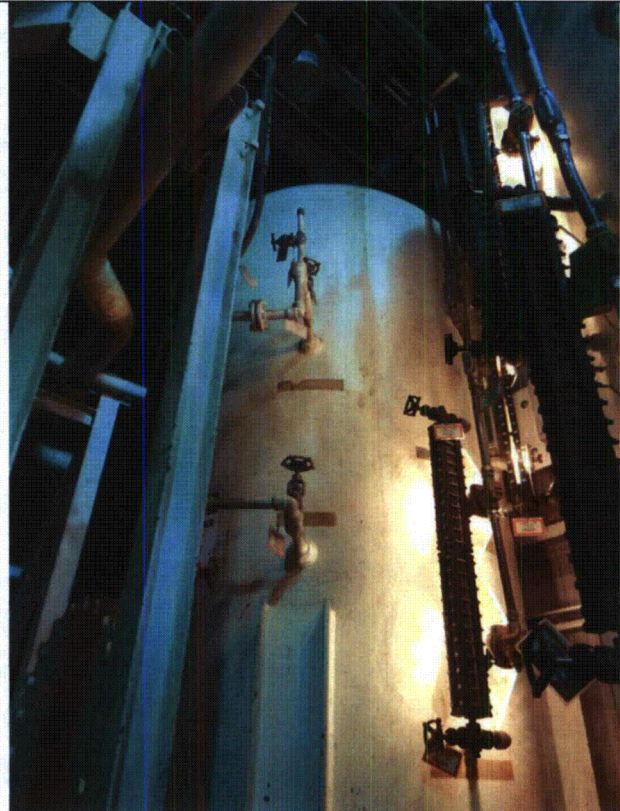
Equipment ID No.: 1TKSRWHD11

Equipment Class: (21) Tanks and Heat Exchangers

Equipment Description: SERVICE WATER HEAD TANK 11



1TKSRWHD11 8-10-12 097



1TKSRWHD11 8-10-12 098

ATTACHMENT 3

WALKDOWN CHECKLISTS

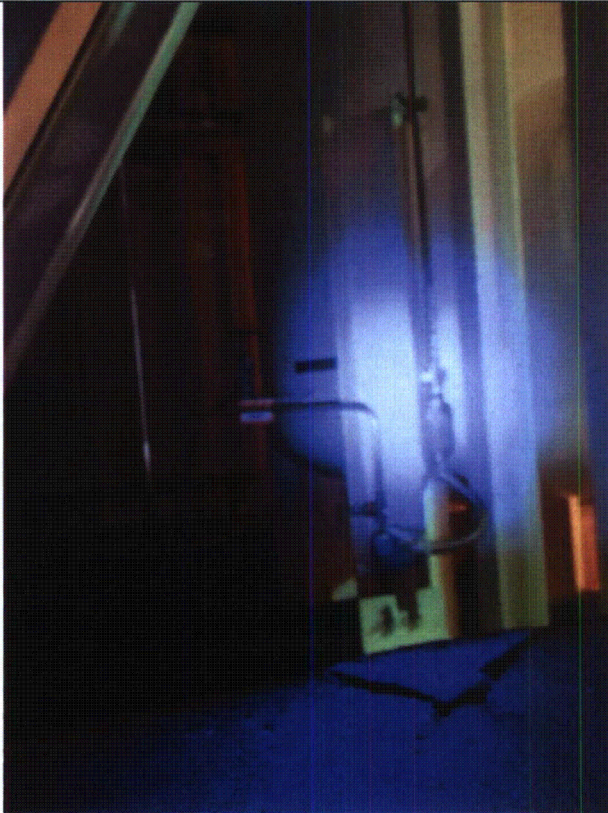
Status: ☒ Y ☐ N ☐ U

Seismic Walkdown Checklist (SWC)

Equipment ID No.: 1TKSRWHD11

Equipment Class: (21) Tanks and Heat Exchangers

Equipment Description: SERVICE WATER HEAD TANK 11



1TKSRWHD11 8-10-12 100

ATTACHMENT 3

WALKDOWN CHECKLISTS

Status: ☒ Y ☐ N ☐ U

Seismic Walkdown Checklist (SWC)

Equipment ID No.: 1U2311A

Equipment Class: (10) Air Handlers

Equipment Description: BATTERY RM UH (UH-19); 480V 15KW

Project: CCNPP 1 SWEL

Location (Bldg, Elev, Room/Area): DG, 77.00 ft, CAL-DGB1-DB207

Manufacturer/Model:

Instructions for Completing Checklist

This checklist may be used to document the results of the Seismic Walkdown of an item of equipment on the SWEL. The space below each of the following questions may be used to record the results of judgments and findings. Additional space is provided at the end of this checklist for documenting other comments.

Anchorage

1. Is anchorage configuration verification required (i.e., is the item one of the 50% of SWEL items requiring such verification)? No
2. Is the anchorage free of bent, broken, missing or loose hardware? Yes
3. Is the anchorage free of corrosion that is more than mild surface oxidation? Yes
4. Is the anchorage free of visible cracks in the concrete near the anchors? Yes
5. Is the anchorage configuration consistent with plant documentation? (Note: This question only applies if the item is one of the 50% for which an anchorage configuration verification is required.) Not Applicable
6. Based on the above anchorage evaluations, is the anchorage free of potentially adverse seismic conditions? Yes

Interaction Effects

ATTACHMENT 3
WALKDOWN CHECKLISTS

Status: ☒ Y ☐ N ☐ U

Seismic Walkdown Checklist (SWC)

Equipment ID No.: 1U2311A

Equipment Class: (10) Air Handlers

Equipment Description: BATTERY RM UH (UH-19); 480V 15KW

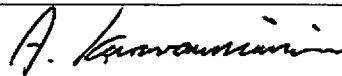
- | | | |
|-----|--|-----|
| 7. | Are soft targets free from impact by nearby equipment or structures? | Yes |
| | | |
| 8. | Are overhead equipment, distribution systems, ceiling tiles and lighting, and masonry block walls not likely to collapse onto the equipment? | Yes |
| | | |
| 9. | Do attached lines have adequate flexibility to avoid damage? | Yes |
| | | |
| 10. | Based on the above seismic interaction evaluations, is equipment free of potentially adverse seismic interaction effects? | Yes |

Other Adverse Conditions

- | | | |
|-----|--|-----|
| 11. | Have you looked for and found no adverse seismic conditions that could adversely affect the safety functions of the equipment? | Yes |
|-----|--|-----|

Comments

Evaluated by:



A. Karavoussianis

Date: 11/09/2012



C. Figliolini

11/09/2012

Photos

ATTACHMENT 3

WALKDOWN CHECKLISTS

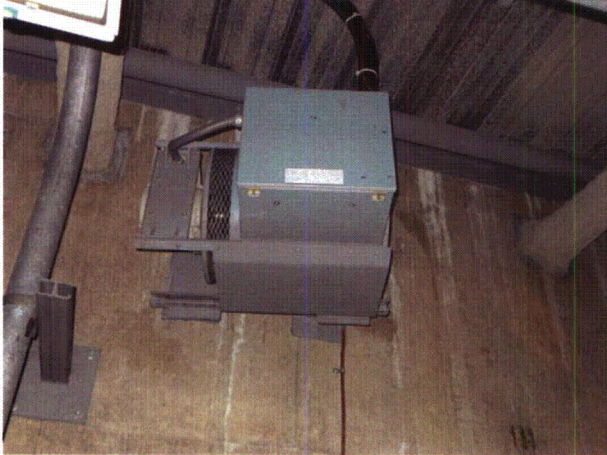
Status: ☒ Y ☐ N ☐ U

Seismic Walkdown Checklist (SWC)

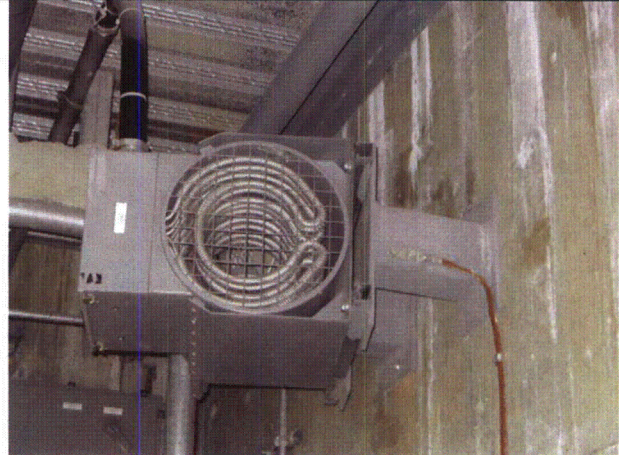
Equipment ID No.: 1U2311A

Equipment Class: (10) Air Handlers

Equipment Description: BATTERY RM UH (UH-19); 480V 15KW



1U2311A 8-15-12 082



1U2311A 8-15-12 083



1U2311A 8-15-12 084



1U2311A 8-15-12 085

ATTACHMENT 3

WALKDOWN CHECKLISTS

Status: ☒ Y ☐ N ☐ U

Seismic Walkdown Checklist (SWC)

Equipment ID No.: 1U2338

Equipment Class: (10) Air Handlers

Equipment Description: BATTERY RM DUCT HTR (DH-1)

Project: CCNPP 1 SWEL

Location (Bldg, Elev, Room/Area): DG, 74.00 ft, CAL-DGB1-DB206

Manufacturer/Model:

Instructions for Completing Checklist

This checklist may be used to document the results of the Seismic Walkdown of an item of equipment on the SWEL. The space below each of the following questions may be used to record the results of judgments and findings. Additional space is provided at the end of this checklist for documenting other comments.

Anchorage

1. Is anchorage configuration verification required (i.e., is the item one of the 50% of SWEL items requiring such verification)? No
2. Is the anchorage free of bent, broken, missing or loose hardware? Not Applicable
3. Is the anchorage free of corrosion that is more than mild surface oxidation? Not Applicable
4. Is the anchorage free of visible cracks in the concrete near the anchors? Not Applicable
5. Is the anchorage configuration consistent with plant documentation? (Note: This question only applies if the item is one of the 50% for which an anchorage configuration verification is required.) Not Applicable
6. Based on the above anchorage evaluations, is the anchorage free of potentially adverse seismic conditions? Yes
The equipment is in-line with duct work.

Interaction Effects

ATTACHMENT 3
WALKDOWN CHECKLISTS

Status: ☒ Y ☐ N ☐ U

Seismic Walkdown Checklist (SWC)

Equipment ID No.: 1U2338

Equipment Class: (10) Air Handlers

Equipment Description: BATTERY RM DUCT HTR (DH-1)

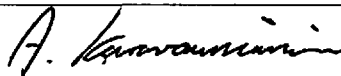
- | | | |
|-----|--|-----|
| 7. | Are soft targets free from impact by nearby equipment or structures? | Yes |
| | | |
| 8. | Are overhead equipment, distribution systems, ceiling tiles and lighting, and masonry block walls not likely to collapse onto the equipment? | Yes |
| | | |
| 9. | Do attached lines have adequate flexibility to avoid damage? | Yes |
| | | |
| 10. | Based on the above seismic interaction evaluations, is equipment free of potentially adverse seismic interaction effects? | Yes |

Other Adverse Conditions

- | | | |
|-----|--|-----|
| 11. | Have you looked for and found no adverse seismic conditions that could adversely affect the safety functions of the equipment? | Yes |
|-----|--|-----|


Comments

Evaluated by:



A. Karavoussianis

Date: 11/09/2012



C. Figliolini

11/09/2012

Photos

ATTACHMENT 3

WALKDOWN CHECKLISTS

Status: ☒ Y ☐ N ☐ U

Seismic Walkdown Checklist (SWC)

Equipment ID No.: 1U2338

Equipment Class: (10) Air Handlers

Equipment Description: BATTERY RM DUCT HTR (DH-1)



1U2338 8-15-12 077



1U2338 8-15-12 078



1U2338 8-15-12 080

ATTACHMENT 3

WALKDOWN CHECKLISTS

Status: Y ☒ N ☐ U

Seismic Walkdown Checklist (SWC)

Equipment ID No.: 1XU-440-11A

Equipment Class: (4) Transformers

Equipment Description: 480V XFMR U-440-11A

Project: CCNPP 1 SWEL

Location (Bldg, Elev, Room/Area): AUX, 27.00 ft, CAL-AB-317

Manufacturer/Model:

Instructions for Completing Checklist

This checklist may be used to document the results of the Seismic Walkdown of an item of equipment on the SWEL. The space below each of the following questions may be used to record the results of judgments and findings. Additional space is provided at the end of this checklist for documenting other comments.

Anchorage

- | | | |
|----|--|-----|
| 1. | Is anchorage configuration verification required (i.e., is the item one of the 50% of SWEL items requiring such verification)? | Yes |
| | | |
| 2. | Is the anchorage free of bent, broken, missing or loose hardware?
<i>Anchorage is inaccessible.</i> | No |
| | | |
| 3. | Is the anchorage free of corrosion that is more than mild surface oxidation?
<i>Anchorage is inaccessible.</i> | No |
| | | |
| 4. | Is the anchorage free of visible cracks in the concrete near the anchors?
<i>Anchorage is inaccessible.</i> | No |
| | | |
| 5. | Is the anchorage configuration consistent with plant documentation? (Note: This question only applies if the item is one of the 50% for which an anchorage configuration verification is required.)
<i>Anchorage is inaccessible.</i> | No |
| | | |
| 6. | Based on the above anchorage evaluations, is the anchorage free of potentially adverse seismic conditions?
<i>Anchorage is inaccessible.</i> | No |

Interaction Effects

ATTACHMENT 3

WALKDOWN CHECKLISTS

Status: Y ☒ N ☐ U

Seismic Walkdown Checklist (SWC)

Equipment ID No.: 1XU-440-11A

Equipment Class: (4) Transformers

Equipment Description: 480V XFMR U-440-11A

- | | |
|---|-----|
| 7. Are soft targets free from impact by nearby equipment or structures? | Yes |
| 8. Are overhead equipment, distribution systems, ceiling tiles and lighting, and masonry block walls not likely to collapse onto the equipment? | Yes |
| 9. Do attached lines have adequate flexibility to avoid damage? | Yes |
| 10. Based on the above seismic interaction evaluations, is equipment free of potentially adverse seismic interaction effects? | Yes |

Other Adverse Conditions

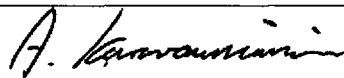
- | | |
|--|----|
| 11. Have you looked for and found no adverse seismic conditions that could adversely affect the safety functions of the equipment? | No |
|--|----|

There is a 1/2" gap between the transformer and Bus. Gap is spanned by large duct box, box looks to be in good contact with both Bus and transformer therefore judged to be seismically acceptable.

Cabinet is inaccessible for internal inspection.

Comments

Evaluated by:



A. Karavoussianis

Date: 11/09/2012



C. Figliolini

11/09/2012

Photos

ATTACHMENT 3

WALKDOWN CHECKLISTS

Status: Y ☒ N ☐ U

Seismic Walkdown Checklist (SWC)

Equipment ID No.: 1XU-440-11A

Equipment Class: (4) Transformers

Equipment Description: 480V XFMR U-440-11A



1XU-440-11A 8-15-12 176



1XU-440-11A 8-15-12 177

ATTACHMENT 3

WALKDOWN CHECKLISTS

Status: Y ☒ N ☐ U

Seismic Walkdown Checklist (SWC)

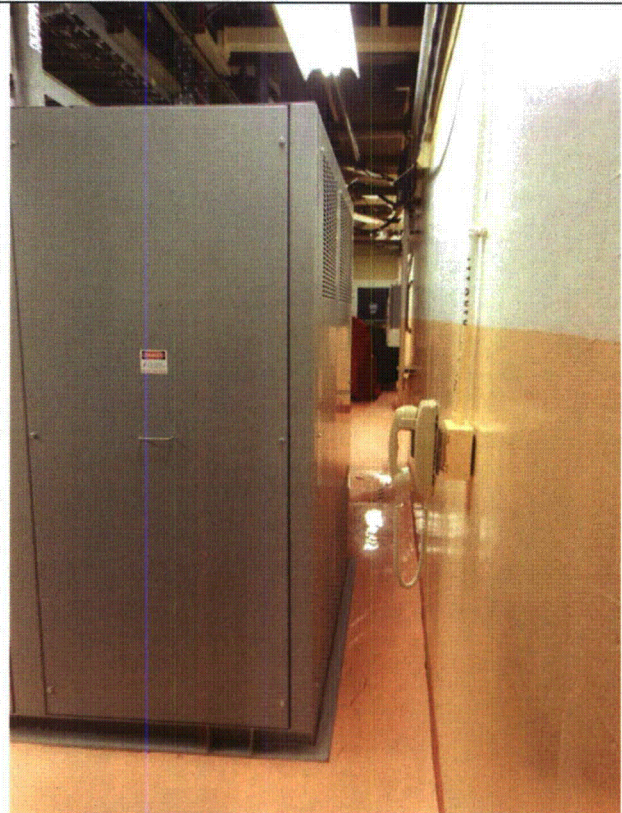
Equipment ID No.: 1XU-440-11A

Equipment Class: (4) Transformers

Equipment Description: 480V XFMR U-440-11A



1XU-440-11A 8-15-12 178



1XU-440-11A 8-15-12 179

ATTACHMENT 3

WALKDOWN CHECKLISTS

Status: Y ☒ N ☐ U

Seismic Walkdown Checklist (SWC)

Equipment ID No.: 1XU-440-11A

Equipment Class: (4) Transformers

Equipment Description: 480V XFMR U-440-11A



1XU-440-11A 8-15-12 180



1XU-440-11A 8-15-12 181

ATTACHMENT 3

WALKDOWN CHECKLISTS

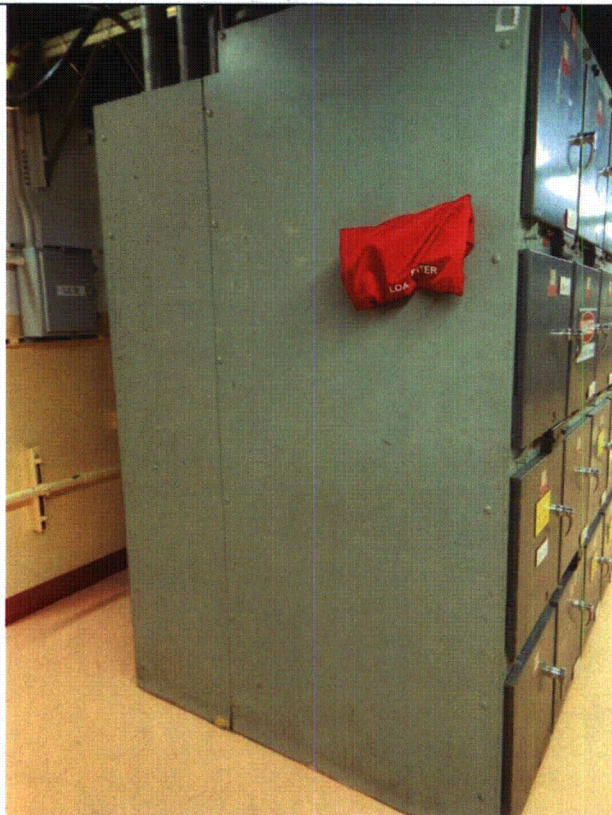
Status: Y ☒ N ☐ U

Seismic Walkdown Checklist (SWC)

Equipment ID No.: 1XU-440-11A

Equipment Class: (4) Transformers

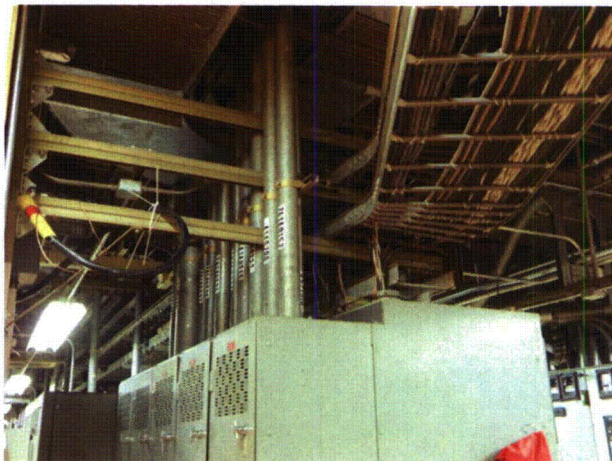
Equipment Description: 480V XFMR U-440-11A



1XU-440-11A 8-15-12 182



1XU-440-11A 8-15-12 183



1XU-440-11A 8-15-12 184



1XU-440-11A 8-15-12 185

ATTACHMENT 3

WALKDOWN CHECKLISTS

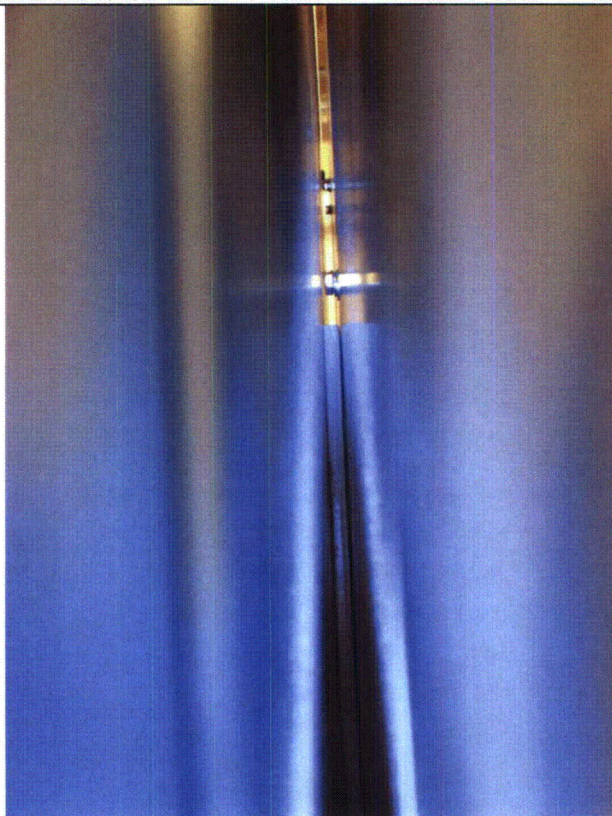
Status: Y ☒ N ☐ U

Seismic Walkdown Checklist (SWC)

Equipment ID No.: 1XU-440-11A

Equipment Class: (4) Transformers

Equipment Description: 480V XFMR U-440-11A



1XU-440-11A 8-15-12 186
