

**ATTACHMENT 3**  
**WALKDOWN CHECKLISTS**

---

Status:  Y  N  U

**Seismic Walkdown Checklist (SWC)**

Equipment ID No.: 1PNL1C10

Equipment Class: (20) Instrumentation and Control Panels and Cabinets

Equipment Description: ENGINEERING SAFEGUARDS CONTROL

---

Project: CCNPP 1 SWEL

Location (Bldg, Elev, Room/Area): AUX, 45.00 ft, CAL-AB-405

Manufacturer/Model: \_\_\_\_\_

---

**Instructions for Completing Checklist**

This checklist may be used to document the results of the Seismic Walkdown of an item of equipment on the SWEL. The space below each of the following questions may be used to record the results of judgments and findings. Additional space is provided at the end of this checklist for documenting other comments.

---

**Anchorage**

1. Is anchorage configuration verification required (i.e., is the item one of the 50% of SWEL items requiring such verification)? Yes
  
2. Is the anchorage free of bent, broken, missing or loose hardware? Yes
  
3. Is the anchorage free of corrosion that is more than mild surface oxidation? Yes
  
4. Is the anchorage free of visible cracks in the concrete near the anchors? Yes
  
5. Is the anchorage configuration consistent with plant documentation? (Note: This question only applies if the item is one of the 50% for which an anchorage configuration verification is required.) No  
*Anchorage used details that are not shown on the drawing, but are judged to be equivalent. See as-built on drawing G1992 SH0004 Rev. 9. CR-2012-009725*
  
6. Based on the above anchorage evaluations, is the anchorage free of potentially adverse seismic conditions? Yes  
*The anchorage detail deviations do not adversely affect the cabinet's anchorage, therefore there is no potential seismic*

*concern. This is simple a documentation issue.*

---

**ATTACHMENT 3**  
**WALKDOWN CHECKLISTS**

---

Status:  Y  N  U

**Seismic Walkdown Checklist (SWC)**

Equipment ID No.: 1PNL1C10

Equipment Class: (20) Instrumentation and Control Panels and Cabinets

Equipment Description: ENGINEERING SAFEGUARDS CONTROL

---

**Interaction Effects**

7. Are soft targets free from impact by nearby equipment or structures? No

*Metrological cabinet is in close proximity to the cabinets, tipping over may be a concern. The Met. cabinet dimension are 24"x29"x58"H and estimated to weigh less than 200#.*

*Based on NUREG CR 6865, Fig. VI.59*

*Using 1 Hz, 5% Damping and max. friction coefficient of 0.8.*

*From AE045D5N – Sa=0.19g and AE045DEE – Sa=0.21g (use this)*

*Dmax (tip over) = 0.15", Theta max = 0.04 Deg.*

*Actual tipping angle, alpha = tan<sup>-1</sup>(12/39) = 17 Deg >> Theta max, therefore the Met. Cabinet will not tip over.*

*Craft back board may fall on back of panel or may strike strip recorder.*

*Recommend moving it. CR-2012-008387*

8. Are overhead equipment, distribution systems, ceiling tiles and lighting, and masonry block walls not likely to collapse onto the equipment? Yes

*Drop ceiling with light diffusers, need details to determine seismic adequacy.*

*A masonry block wall, identified as Y on drawing A-259, is located behind the panels. This wall is safety-related and thus seismically rated per IE Bulletin 80-11.*

9. Do attached lines have adequate flexibility to avoid damage? Yes

10. Based on the above seismic interaction evaluations, is equipment free of potentially adverse seismic interaction effects? Yes

---

**Other Adverse Conditions**

11. Have you looked for and found no adverse seismic conditions that could adversely affect the safety functions of the equipment? Yes

---

**Comments**

---

**ATTACHMENT 3**  
**WALKDOWN CHECKLISTS**

---

Status:  Y  N  U

**Seismic Walkdown Checklist (SWC)**

Equipment ID No.: 1PNL1C10

Equipment Class: (20) Instrumentation and Control Panels and Cabinets

Equipment Description: ENGINEERING SAFEGUARDS CONTROL

---

Evaluated by:

*A. Karavoussianis*

A. Karavoussianis

Date: 11/09/2012

*C. Figliolini*

C. Figliolini

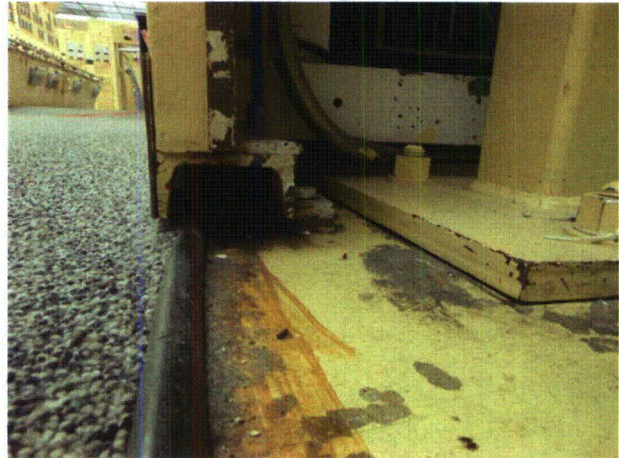
11/09/2012

---

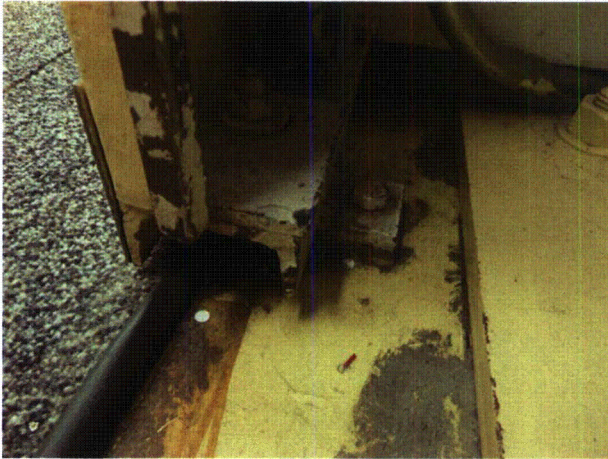
**Photos**



1PNL1C10 8-14-12 106



1PNL1C10 8-14-12 107



1PNL1C10 8-14-12 108



1PNL1C10 8-14-12 109

---

**ATTACHMENT 3**  
**WALKDOWN CHECKLISTS**

---

Status:  Y  N  U

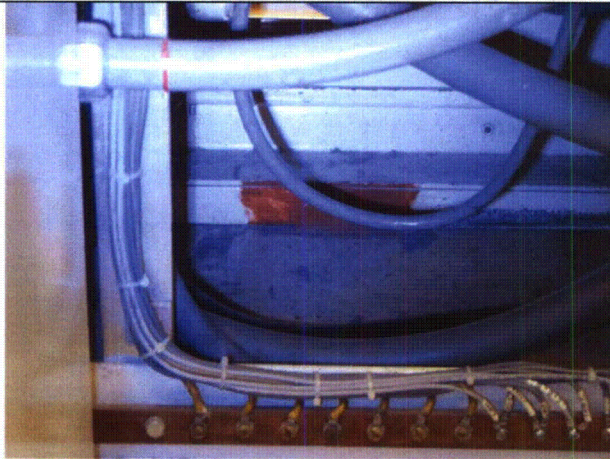
**Seismic Walkdown Checklist (SWC)**

Equipment ID No.: 1PNL1C10

Equipment Class: (20) Instrumentation and Control Panels and Cabinets

Equipment Description: ENGINEERING SAFEGUARDS CONTROL

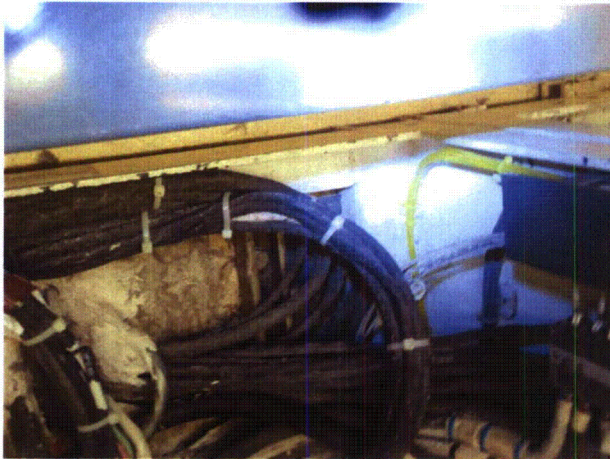
---



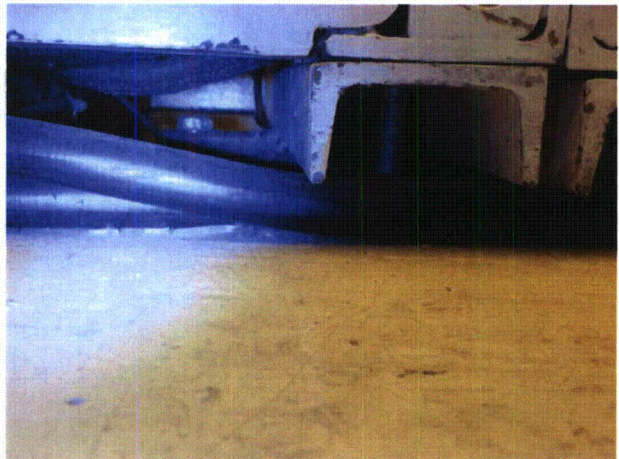
1PNL1C10 8-14-12 110



1PNL1C10 8-14-12 111



1PNL1C10 8-14-12 112



1PNL1C10 8-14-12 113

---

**ATTACHMENT 3**  
**WALKDOWN CHECKLISTS**

---

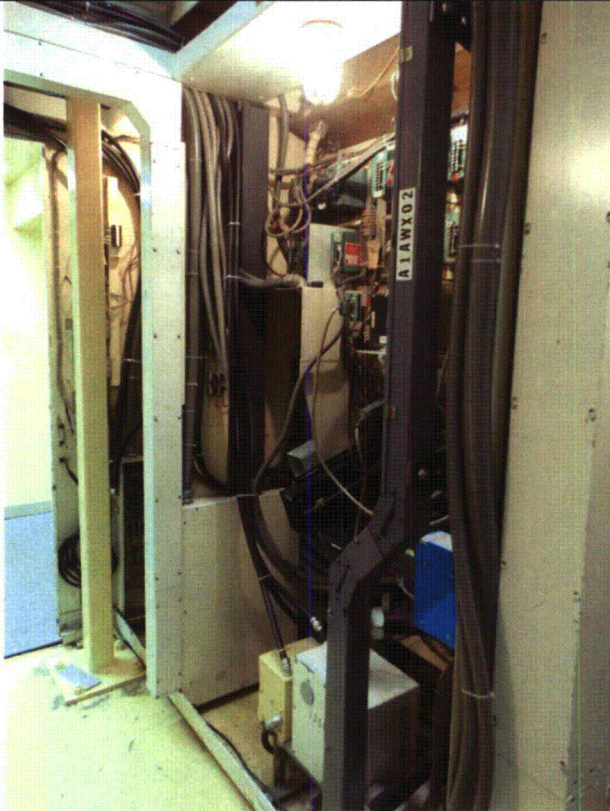
Status:  Y  N  U

**Seismic Walkdown Checklist (SWC)**

Equipment ID No.: 1PNL1C10

Equipment Class: (20) Instrumentation and Control Panels and Cabinets

Equipment Description: ENGINEERING SAFEGUARDS CONTROL



1PNL1C10 8-14-12 116



1PNL1C10 8-14-12 117

# ATTACHMENT 3

## WALKDOWN CHECKLISTS

Status:  Y  N  U

### Seismic Walkdown Checklist (SWC)

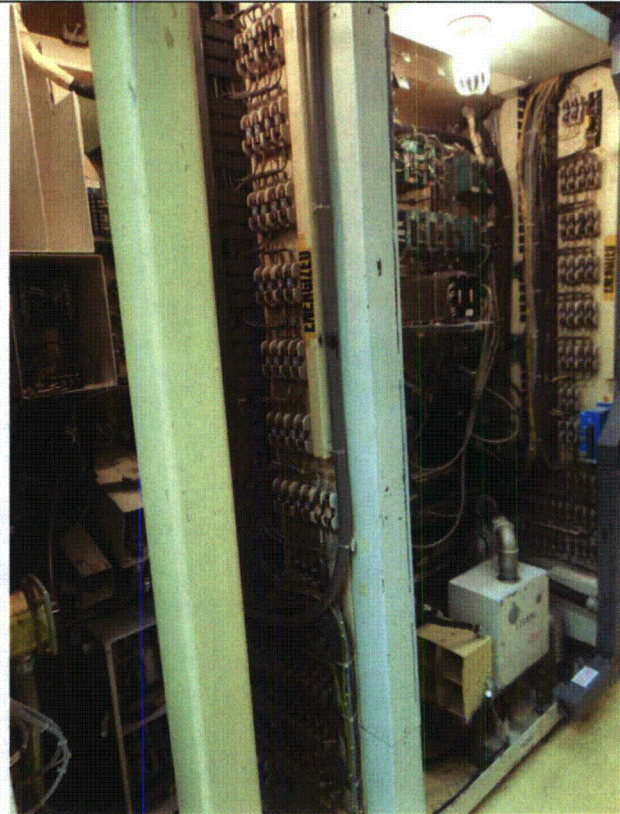
Equipment ID No.: 1PNL1C10

Equipment Class: (20) Instrumentation and Control Panels and Cabinets

Equipment Description: ENGINEERING SAFEGUARDS CONTROL



1PNL1C10 8-14-12 118



1PNL1C10 8-14-12 119

**ATTACHMENT 3**  
**WALKDOWN CHECKLISTS**

---

Status:  Y  N  U

**Seismic Walkdown Checklist (SWC)**

Equipment ID No.: 1PNL1C10

Equipment Class: (20) Instrumentation and Control Panels and Cabinets

Equipment Description: ENGINEERING SAFEGUARDS CONTROL



1PNL1C10 8-14-12 120



1PNL1C10 8-14-12 121

**ATTACHMENT 3**  
**WALKDOWN CHECKLISTS**

---

Status:  Y  N  U

**Seismic Walkdown Checklist (SWC)**

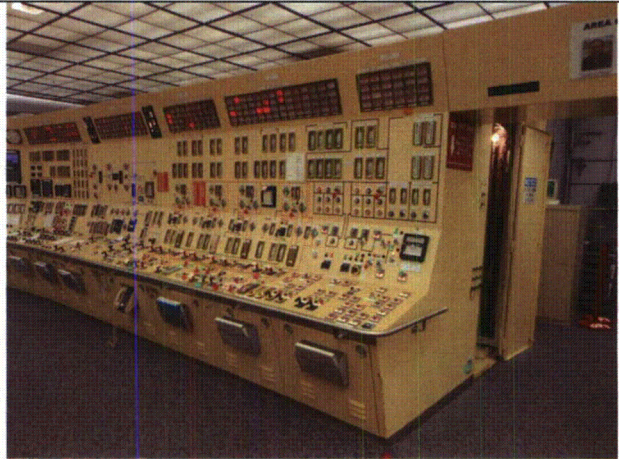
Equipment ID No.: 1PNL1C10

Equipment Class: (20) Instrumentation and Control Panels and Cabinets

Equipment Description: ENGINEERING SAFEGUARDS CONTROL



1PNL1C10 8-14-12 122



1PNL1C10 8-14-12 123



# ATTACHMENT 3

## WALKDOWN CHECKLISTS

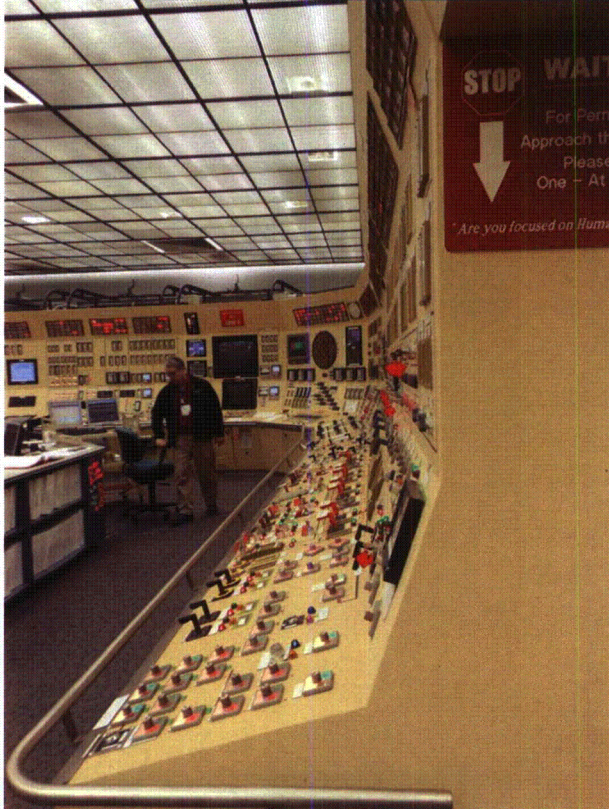
Status:  Y  N  U

### Seismic Walkdown Checklist (SWC)

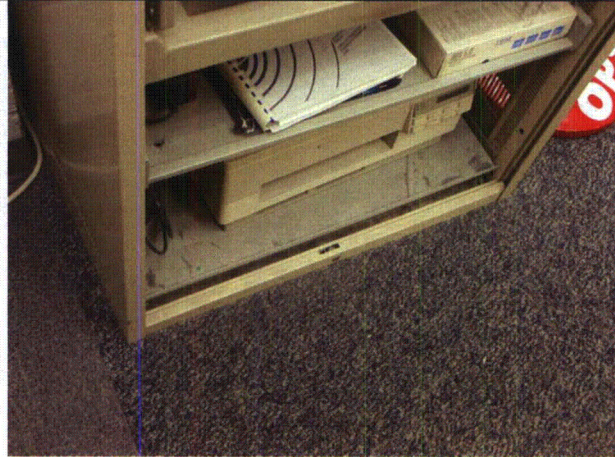
Equipment ID No.: 1PNL1C10

Equipment Class: (20) Instrumentation and Control Panels and Cabinets

Equipment Description: ENGINEERING SAFEGUARDS CONTROL



1PNL1C10 8-14-12 124



1PNL1C10 8-14-12 126

**ATTACHMENT 3**  
**WALKDOWN CHECKLISTS**

---

Status:  Y  N  U

**Seismic Walkdown Checklist (SWC)**

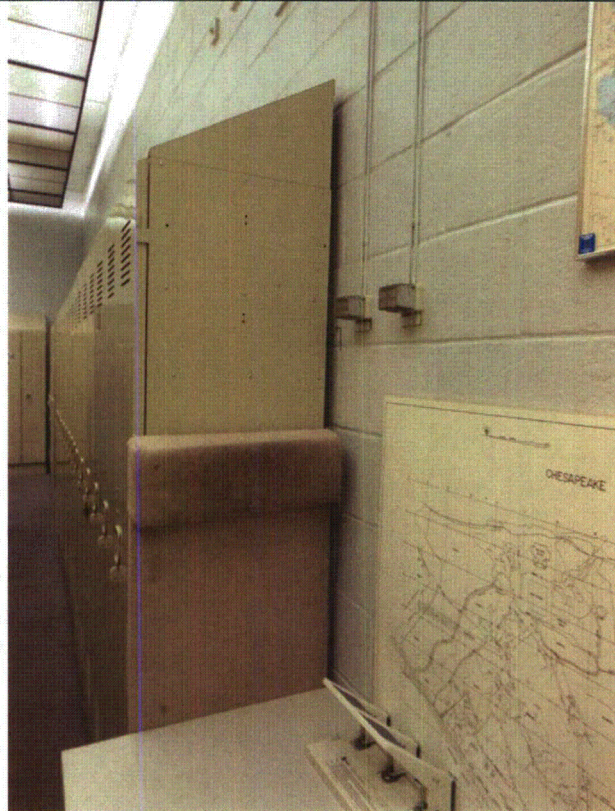
Equipment ID No.: 1PNL1C10

Equipment Class: (20) Instrumentation and Control Panels and Cabinets

Equipment Description: ENGINEERING SAFEGUARDS CONTROL



1PNL1C10 8-14-12 127



1PNL1C10 8-14-12 128

**ATTACHMENT 3**  
**WALKDOWN CHECKLISTS**

---

Status:  Y  N  U

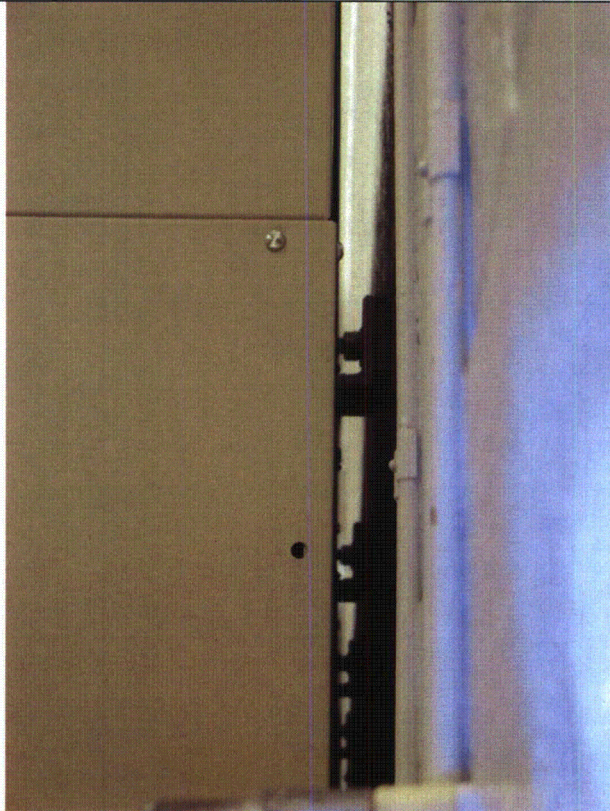
**Seismic Walkdown Checklist (SWC)**

Equipment ID No.: 1PNL1C10

Equipment Class: (20) Instrumentation and Control Panels and Cabinets

Equipment Description: ENGINEERING SAFEGUARDS CONTROL

---



1PNL1C10 8-14-12 129



1PNL1C10 8-14-12 130

**ATTACHMENT 3**  
**WALKDOWN CHECKLISTS**

---

Status: Y  N  U

**Seismic Walkdown Checklist (SWC)**

Equipment ID No.: 1PNL1C18A

Equipment Class: (20) Instrumentation and Control Panels and Cabinets

Equipment Description: 1A-DG 4KV AND 480V CONTROL

Project: CCNPP 1 SWEL

Location (Bldg, Elev, Room/Area): AUX, 45.00 ft, CAL-AB-405

Manufacturer/Model: \_\_\_\_\_

**Instructions for Completing Checklist**

This checklist may be used to document the results of the Seismic Walkdown of an item of equipment on the SWEL. The space below each of the following questions may be used to record the results of judgments and findings. Additional space is provided at the end of this checklist for documenting other comments.

**Anchorage**

1. Is anchorage configuration verification required (i.e., is the item one of the 50% of SWEL items requiring such verification)? Yes
  
2. Is the anchorage free of bent, broken, missing or loose hardware? Yes
  
3. Is the anchorage free of corrosion that is more than mild surface oxidation? Yes
  
4. Is the anchorage free of visible cracks in the concrete near the anchors? Yes
  
5. Is the anchorage configuration consistent with plant documentation? (Note: This question only applies if the item is one of the 50% for which an anchorage configuration verification is required.) No

*SWE opened the front of the cabinet lineup and only C18A of the rear, because there are anchored bookcase that need to be unanchored and moved out of the way. The only anchorage observed was one ½" CEA in the front and rear of C18A and one in the rear of C18B. No other anchor bolts were observed due to interferences with cables and the inaccessibility of the rear.*

*The anchorage is not consistent with SP-0715. SP-0715 shows expansion anchors on the sides of the cabinets not along the front or rear. However, SP-0715 does not indicate the anchor bolt size. CR-2012-009708*

**ATTACHMENT 3**  
**WALKDOWN CHECKLISTS**

---

Status: Y  N  U

**Seismic Walkdown Checklist (SWC)**

Equipment ID No.: 1PNL1C18A

Equipment Class: (20) Instrumentation and Control Panels and Cabinets

Equipment Description: 1A-DG 4KV AND 480V CONTROL

---

6. Based on the above anchorage evaluations, is the anchorage free of potentially adverse seismic conditions? No
- 

**Interaction Effects**

7. Are soft targets free from impact by nearby equipment or structures? Yes  
*Trash and recycling bin up against back of cabinets, however there is nothing mounted on back of the panel, therefore they will not cause inadvertent actuation of any device. Judged no to be a seismic concern.  
Also, there are bookcases adjacent to the panel, the bookcase are bolted to floor at corners, therefore judged no to be a seismic concern.*
8. Are overhead equipment, distribution systems, ceiling tiles and lighting, and masonry block walls not likely to collapse onto the equipment? Yes  
*Drop ceiling with light diffusers, need details to determine seismic adequacy. 10/3/12 - The control room ceiling has been previously evaluated by CCNPP and was determined to not be a credible seismic concern.*
9. Do attached lines have adequate flexibility to avoid damage? Yes  
*Opened cabinets and observed internal cables with adequate flexibility.*
10. Based on the above seismic interaction evaluations, is equipment free of potentially adverse seismic interaction effects? Yes
- 

**Other Adverse Conditions**

11. Have you looked for and found no adverse seismic conditions that could adversely affect the safety functions of the equipment? Yes
- 

**Comments**

---

Evaluated by:

*A. Karavoussianis*

A. Karavoussianis

Date: 11/09/2012

---

**ATTACHMENT 3**  
**WALKDOWN CHECKLISTS**

---

Status: Y  N  U

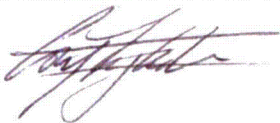
**Seismic Walkdown Checklist (SWC)**

Equipment ID No.: 1PNL1C18A

Equipment Class: (20) Instrumentation and Control Panels and Cabinets

Equipment Description: 1A-DG 4KV AND 480V CONTROL

---

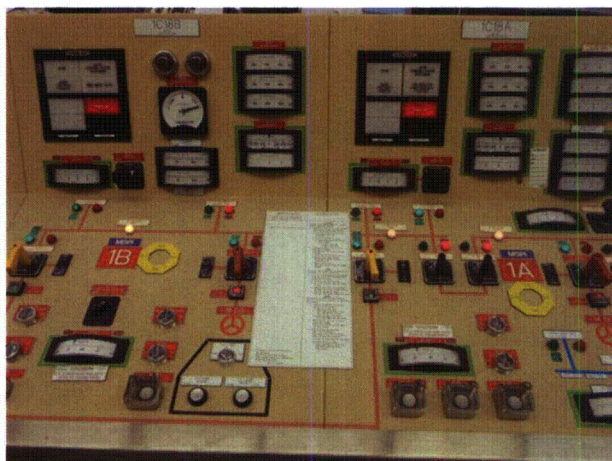


C. Figliolini

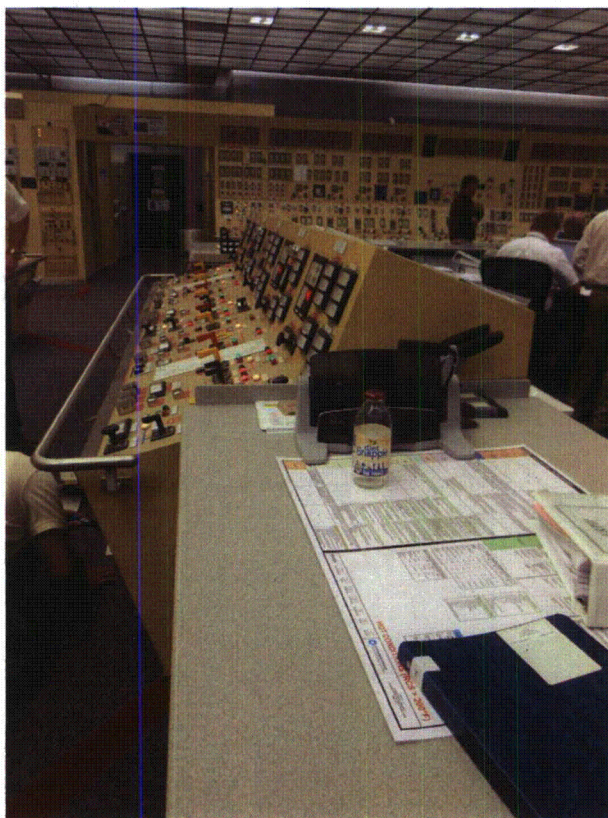
11/09/2012

---

**Photos**



1PNL1C18A 8-14-12 131



1PNL1C18A 8-14-12 132

---

**ATTACHMENT 3**  
**WALKDOWN CHECKLISTS**

---

Status: Y  N  U

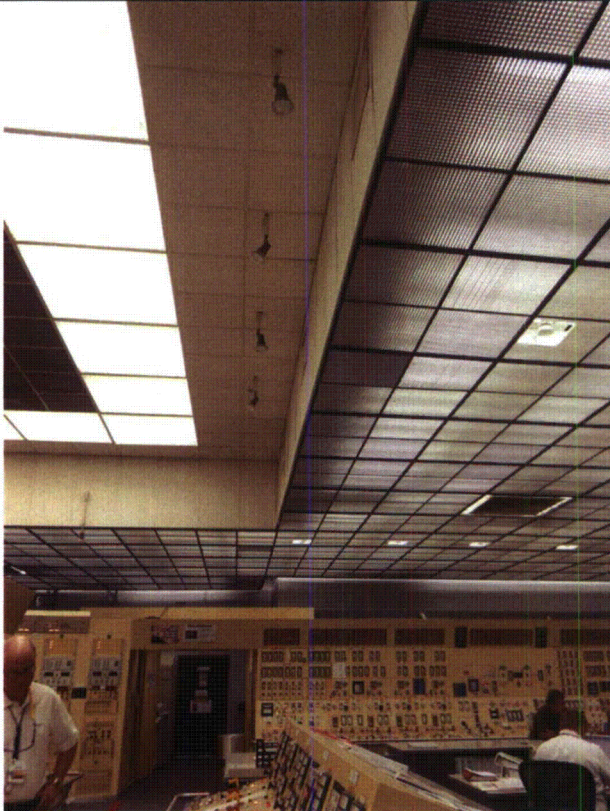
**Seismic Walkdown Checklist (SWC)**

Equipment ID No.: 1PNL1C18A

Equipment Class: (20) Instrumentation and Control Panels and Cabinets

Equipment Description: 1A-DG 4KV AND 480V CONTROL

---



1PNL1C18A 8-14-12 133



1PNL1C18A 8-14-12 134

---

# ATTACHMENT 3

## WALKDOWN CHECKLISTS

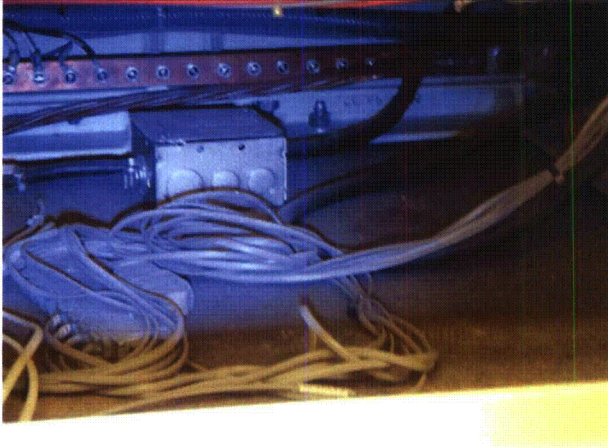
Status: Y  N  U

### Seismic Walkdown Checklist (SWC)

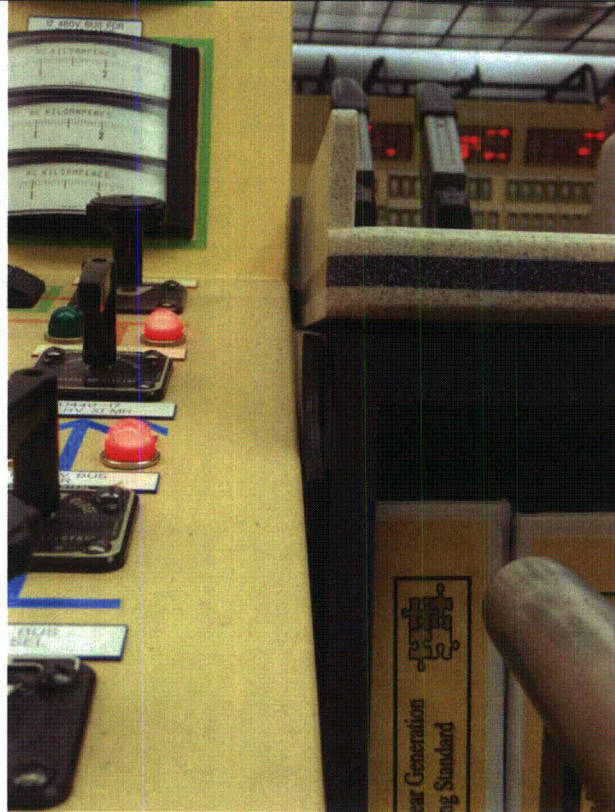
Equipment ID No.: 1PNL1C18A

Equipment Class: (20) Instrumentation and Control Panels and Cabinets

Equipment Description: 1A-DG 4KV AND 480V CONTROL



1PNL1C18A 8-14-12 135



1PNL1C18A 8-14-12 136



# ATTACHMENT 3

## WALKDOWN CHECKLISTS

---

Status: Y  N  U

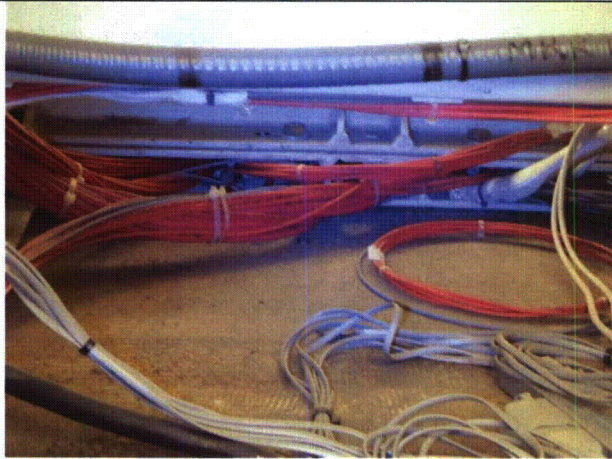
### Seismic Walkdown Checklist (SWC)

Equipment ID No.: 1PNL1C18A

Equipment Class: (20) Instrumentation and Control Panels and Cabinets

Equipment Description: 1A-DG 4KV AND 480V CONTROL

---



1PNL1C18A 8-14-12 137



1PNL1C18A 8-14-12 138

---

# ATTACHMENT 3

## WALKDOWN CHECKLISTS

Status: Y  N  U

### Seismic Walkdown Checklist (SWC)

Equipment ID No.: 1PNL1C18A

Equipment Class: (20) Instrumentation and Control Panels and Cabinets

Equipment Description: 1A-DG 4KV AND 480V CONTROL



1PNL1C18A 8-14-12 139



1PNL1C18A 8-14-12 140

# ATTACHMENT 3

## WALKDOWN CHECKLISTS

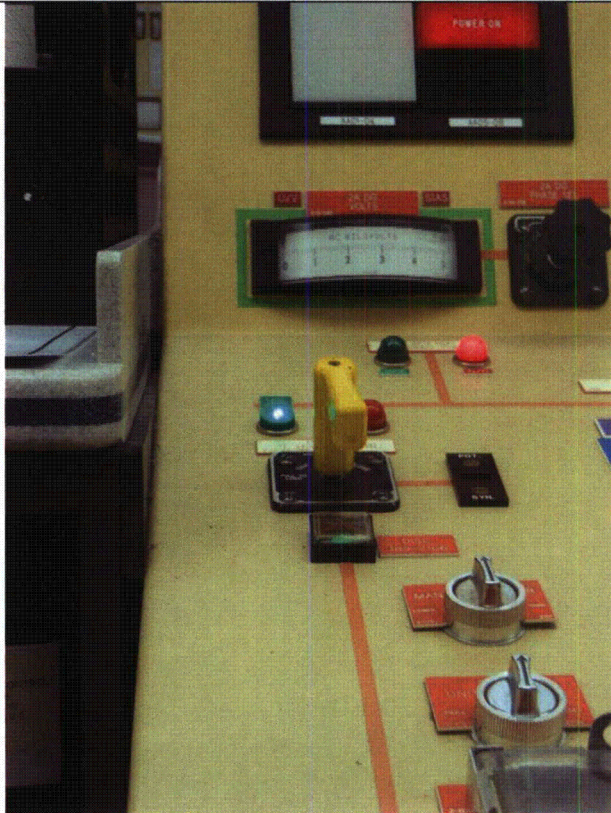
Status: Y  N  U

### Seismic Walkdown Checklist (SWC)

Equipment ID No.: 1PNL1C18A

Equipment Class: (20) Instrumentation and Control Panels and Cabinets

Equipment Description: 1A-DG 4KV AND 480V CONTROL



1PNL1C18A 8-14-12 141



1PNL1C18A 8-14-12 142

# ATTACHMENT 3

## WALKDOWN CHECKLISTS

---

Status:  Y  N  U

### Seismic Walkdown Checklist (SWC)

Equipment ID No.: 1PNL1C18B

Equipment Class: (20) Instrumentation and Control Panels and Cabinets

Equipment Description: 1B DG 4KV AND 480V CONTROL

Project: CCNPP 1 SWEL

Location (Bldg, Elev, Room/Area): AUX, 45.00 ft, CAL-AB-405

Manufacturer/Model: \_\_\_\_\_

### Instructions for Completing Checklist

This checklist may be used to document the results of the Seismic Walkdown of an item of equipment on the SWEL. The space below each of the following questions may be used to record the results of judgments and findings. Additional space is provided at the end of this checklist for documenting other comments.

### Anchorage

1. Is anchorage configuration verification required (i.e., is the item one of the 50% of SWEL items requiring such verification)? No
  
2. Is the anchorage free of bent, broken, missing or loose hardware? Yes
  
3. Is the anchorage free of corrosion that is more than mild surface oxidation? Yes
  
4. Is the anchorage free of visible cracks in the concrete near the anchors? Yes
  
5. Is the anchorage configuration consistent with plant documentation? (Note: This question only applies if the item is one of the 50% for which an anchorage configuration verification is required.) Not Applicable
  
6. Based on the above anchorage evaluations, is the anchorage free of potentially adverse seismic conditions? Yes

---

### Interaction Effects

**ATTACHMENT 3**  
**WALKDOWN CHECKLISTS**

---

Status:  Y  N  U

**Seismic Walkdown Checklist (SWC)**

Equipment ID No.: 1PNL1C18B

Equipment Class: (20) Instrumentation and Control Panels and Cabinets

Equipment Description: 1B DG 4KV AND 480V CONTROL

---

7. Are soft targets free from impact by nearby equipment or structures? Yes

*Trash and recycling bin up against back of cabinets, however there is nothing mounted on back of the panel, therefore they will not cause inadvertent actuation of any device. Judged no to be a seismic concern.  
Also, there are bookcases adjacent to the panel, the bookcase are bolted to floor at corners, therefore judged no to be a seismic concern.*

8. Are overhead equipment, distribution systems, ceiling tiles and lighting, and masonry block walls not likely to collapse onto the equipment? Yes

*Drop ceiling with light diffusers, need details to determine seismic adequacy. 10/3/12 - The control room ceiling has been previously evaluated by CCNPP and was determined to not be a credible seismic concern.*

9. Do attached lines have adequate flexibility to avoid damage? Yes

*Opened cabinets and observed internal cables with adequate flexibility.*

10. Based on the above seismic interaction evaluations, is equipment free of potentially adverse seismic interaction effects? Yes
- 

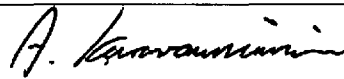
**Other Adverse Conditions**

11. Have you looked for and found no adverse seismic conditions that could adversely affect the safety functions of the equipment? Yes
- 

**Comments**

---

Evaluated by:



A. Karavoussianis

Date: 11/09/2012



C. Figliolini

11/09/2012

---

**Photos**

---

**ATTACHMENT 3**  
**WALKDOWN CHECKLISTS**

---

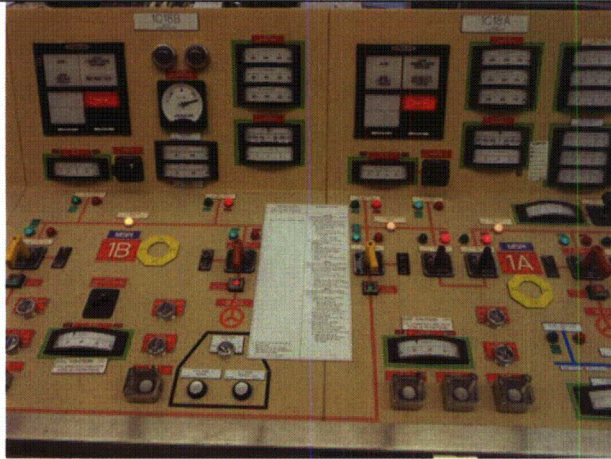
Status:  Y  N  U

**Seismic Walkdown Checklist (SWC)**

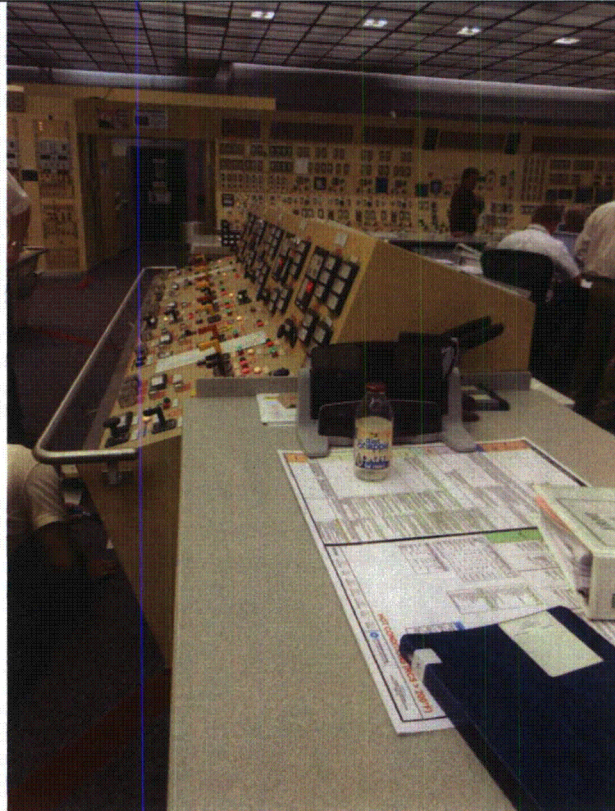
Equipment ID No.: 1PNL1C18B

Equipment Class: (20) Instrumentation and Control Panels and Cabinets

Equipment Description: 1B DG 4KV AND 480V CONTROL



1PNL1C18B 8-14-12 131



1PNL1C18B 8-14-12 132

**ATTACHMENT 3**  
**WALKDOWN CHECKLISTS**

---

Status:  Y  N  U

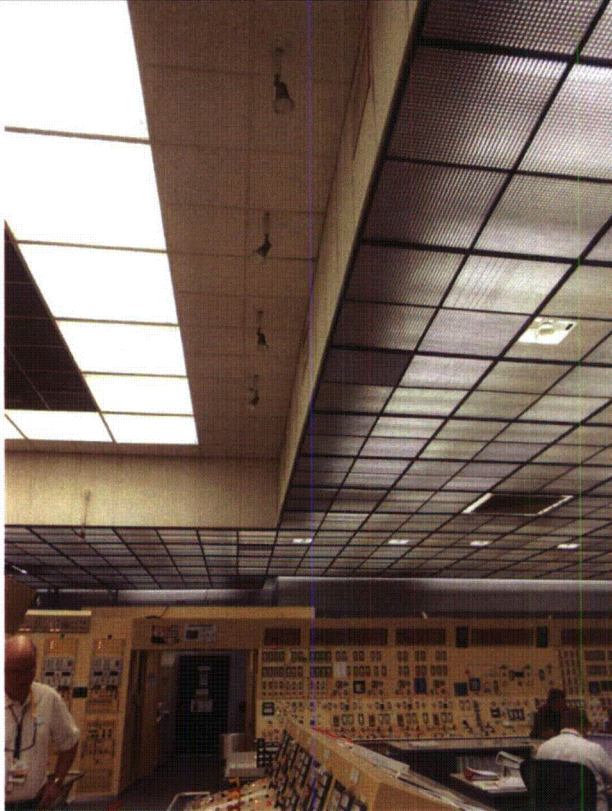
**Seismic Walkdown Checklist (SWC)**

Equipment ID No.: 1PNL1C18B

Equipment Class: (20) Instrumentation and Control Panels and Cabinets

Equipment Description: 1B DG 4KV AND 480V CONTROL

---



1PNL1C18B 8-14-12 133



1PNL1C18B 8-14-12 134

---

# ATTACHMENT 3

## WALKDOWN CHECKLISTS

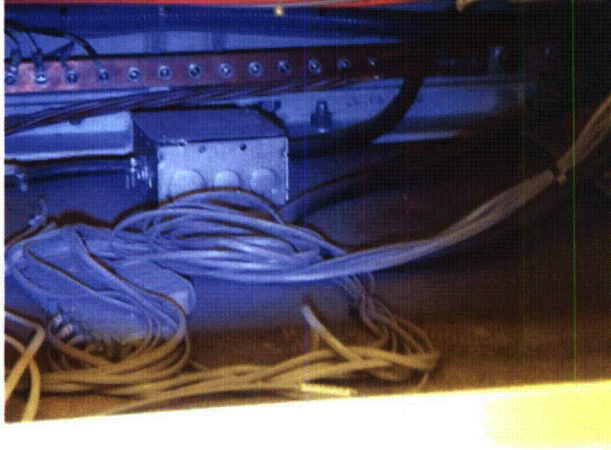
Status:  Y  N  U

### Seismic Walkdown Checklist (SWC)

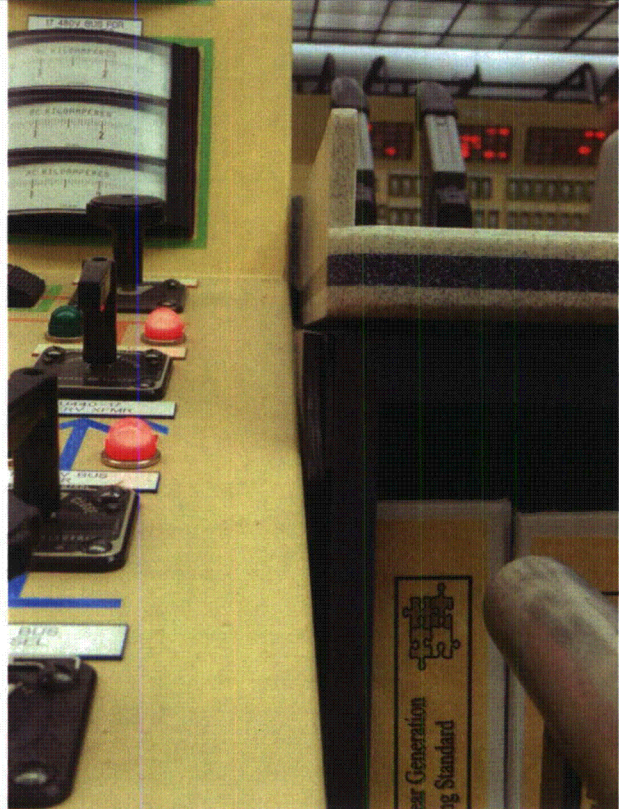
Equipment ID No.: 1PNL1C18B

Equipment Class: (20) Instrumentation and Control Panels and Cabinets

Equipment Description: 1B DG 4KV AND 480V CONTROL



1PNL1C18B 8-14-12 135



1PNL1C18B 8-14-12 136



# ATTACHMENT 3

## WALKDOWN CHECKLISTS

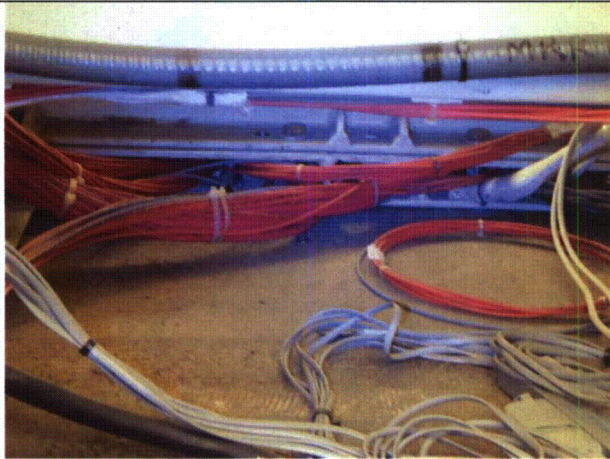
Status:  Y  N  U

### Seismic Walkdown Checklist (SWC)

Equipment ID No.: 1PNL1C18B

Equipment Class: (20) Instrumentation and Control Panels and Cabinets

Equipment Description: 1B DG 4KV AND 480V CONTROL



1PNL1C18B 8-14-12 137



1PNL1C18B 8-14-12 138

# ATTACHMENT 3

## WALKDOWN CHECKLISTS

Status:  Y  N  U

### Seismic Walkdown Checklist (SWC)

Equipment ID No.: 1PNL1C18B

Equipment Class: (20) Instrumentation and Control Panels and Cabinets

Equipment Description: 1B DG 4KV AND 480V CONTROL



1PNL1C18B 8-14-12 139



1PNL1C18B 8-14-12 140

**ATTACHMENT 3**  
**WALKDOWN CHECKLISTS**

---

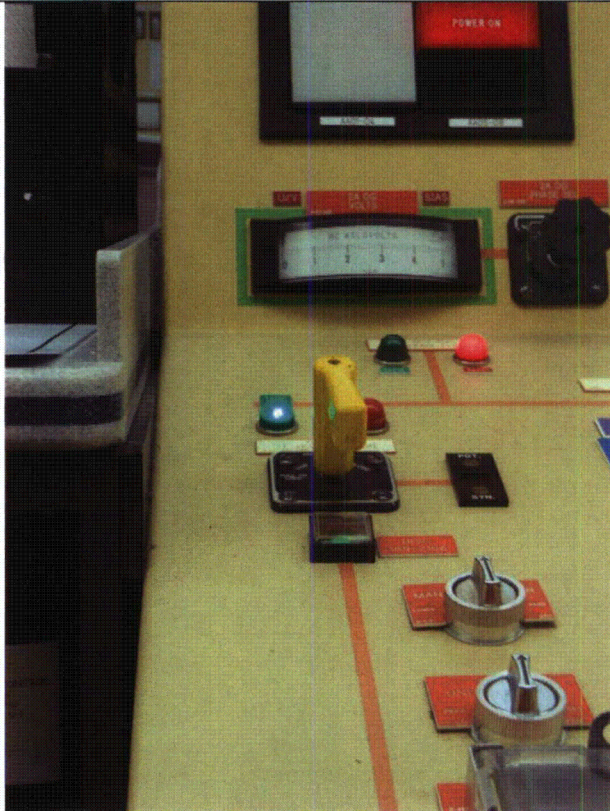
Status:  Y  N  U

**Seismic Walkdown Checklist (SWC)**

Equipment ID No.: 1PNL1C18B

Equipment Class: (20) Instrumentation and Control Panels and Cabinets

Equipment Description: 1B DG 4KV AND 480V CONTROL



1PNL1C18B 8-14-12 141



1PNL1C18B 8-14-12 142

# ATTACHMENT 3

## WALKDOWN CHECKLISTS

---

Status: Y  N  U

### Seismic Walkdown Checklist (SWC)

Equipment ID No.: 1PNL1C62B

Equipment Class: (20) Instrumentation and Control Panels and Cabinets

Equipment Description: 1B DG LOCAL CONTROL PANEL

Project: CCNPP 1 SWEL

Location (Bldg, Elev, Room/Area): AUX, 45.00 ft, CAL-AB-421

Manufacturer/Model: \_\_\_\_\_

### Instructions for Completing Checklist

This checklist may be used to document the results of the Seismic Walkdown of an item of equipment on the SWEL. The space below each of the following questions may be used to record the results of judgments and findings. Additional space is provided at the end of this checklist for documenting other comments.

### Anchorage

1. Is anchorage configuration verification required (i.e., is the item one of the 50% of SWEL items requiring such verification)? Yes
  
2. Is the anchorage free of bent, broken, missing or loose hardware? No  
*Anchorage is inaccessible.*
  
3. Is the anchorage free of corrosion that is more than mild surface oxidation? No  
*Anchorage is inaccessible.*
  
4. Is the anchorage free of visible cracks in the concrete near the anchors? No  
*Anchorage is inaccessible.*
  
5. Is the anchorage configuration consistent with plant documentation? (Note: This question only applies if the item is one of the 50% for which an anchorage configuration verification is required.) No  
*Anchorage is inaccessible.*
  
6. Based on the above anchorage evaluations, is the anchorage free of potentially adverse seismic conditions? No  
*Anchorage is inaccessible.*

---

### Interaction Effects

**ATTACHMENT 3**  
**WALKDOWN CHECKLISTS**

---

Status: Y  N  U

**Seismic Walkdown Checklist (SWC)**

Equipment ID No.: 1PNL1C62B

Equipment Class: (20) Instrumentation and Control Panels and Cabinets

Equipment Description: 1B DG LOCAL CONTROL PANEL

---

7. Are soft targets free from impact by nearby equipment or structures? No

*Panel is in contact with conduit. Need to determine if this condition is seismically acceptable. CR-2012-009670*

8. Are overhead equipment, distribution systems, ceiling tiles and lighting, and masonry block walls not likely to collapse onto the equipment? Yes

*An overhead light is in zone of influence of relay, gage and switches. 10/3/12 - Overhead lights were deemed not a credible seismic concern due to their lightweight and to typical construction practices. Also, they have been previously evaluated by CCNPP and found seismically acceptable.*

9. Do attached lines have adequate flexibility to avoid damage? Yes

10. Based on the above seismic interaction evaluations, is equipment free of potentially adverse seismic interaction effects? Yes
- 

**Other Adverse Conditions**

11. Have you looked for and found no adverse seismic conditions that could adversely affect the safety functions of the equipment? No

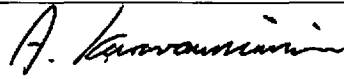
*Cabinet is inaccessible for internal inspection.*

---

**Comments**

---

Evaluated by:



A. Karavoussianis

Date: 11/09/2012



C. Figliolini

11/09/2012

---

**Photos**

---

# ATTACHMENT 3

## WALKDOWN CHECKLISTS

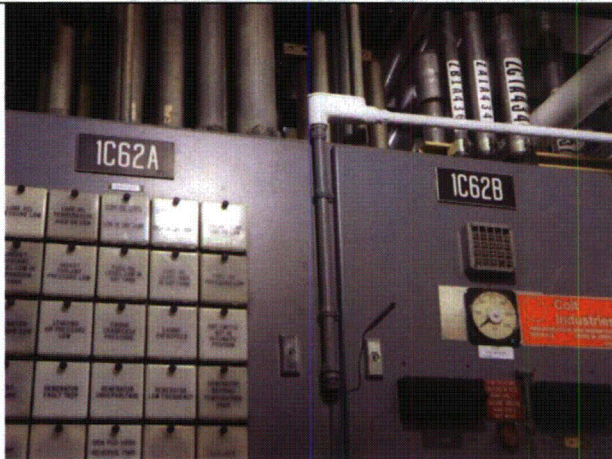
Status: Y  N  U

### Seismic Walkdown Checklist (SWC)

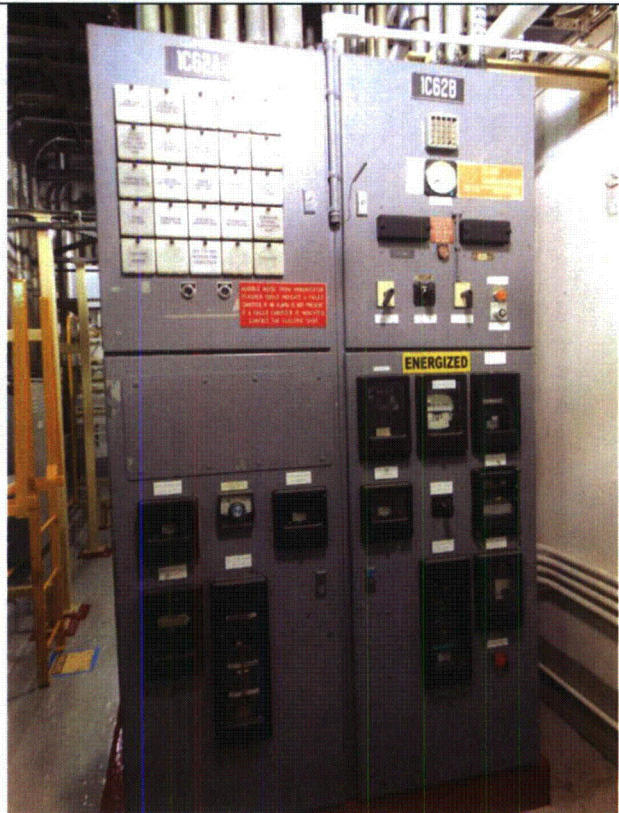
Equipment ID No.: 1PNL1C62B

Equipment Class: (20) Instrumentation and Control Panels and Cabinets

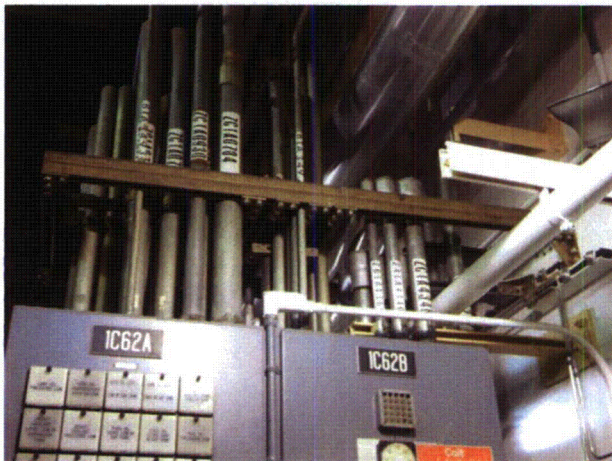
Equipment Description: 1B DG LOCAL CONTROL PANEL



1PNL1C62B 8-13-12 127



1PNL1C62B 8-13-12 128



1PNL1C62B 8-13-12 129



1PNL1C62B 8-13-12 130

# ATTACHMENT 3

## WALKDOWN CHECKLISTS

Status: Y  N  U

### Seismic Walkdown Checklist (SWC)

Equipment ID No.: 1PNL1C62B

Equipment Class: (20) Instrumentation and Control Panels and Cabinets

Equipment Description: 1B DG LOCAL CONTROL PANEL



1PNL1C62B 8-13-12 131



1PNL1C62B 8-13-12 132

**ATTACHMENT 3**  
**WALKDOWN CHECKLISTS**

---

Status: Y  N  U

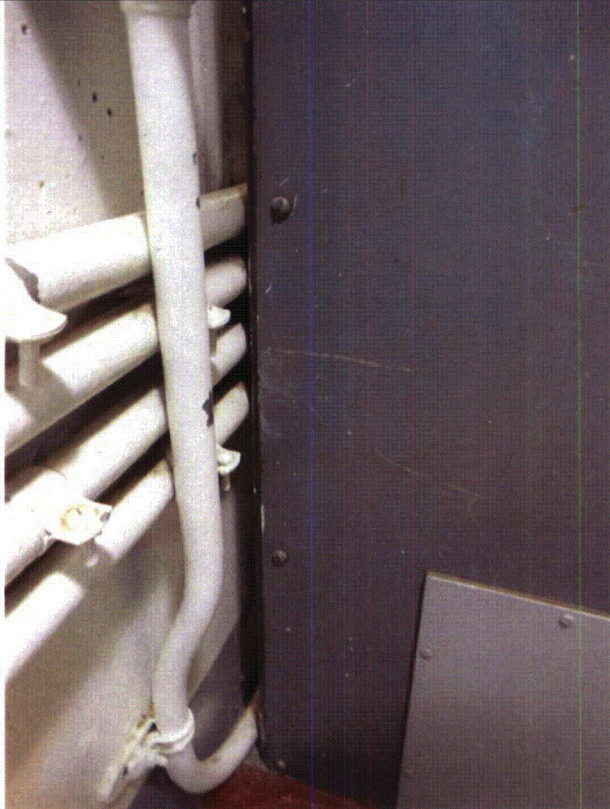
**Seismic Walkdown Checklist (SWC)**

Equipment ID No.: 1PNL1C62B

Equipment Class: (20) Instrumentation and Control Panels and Cabinets

Equipment Description: 1B DG LOCAL CONTROL PANEL

---



1PNL1C62B 8-13-12 133



1PNL1C62B 8-13-12 134

---



**ATTACHMENT 3**  
**WALKDOWN CHECKLISTS**

---

Status: Y  N  U

**Seismic Walkdown Checklist (SWC)**

Equipment ID No.: 1PNL1C62C

Equipment Class: (20) Instrumentation and Control Panels and Cabinets

Equipment Description: 1B DG LOCAL CONTROL PANEL

Project: CCNPP 1 SWEL

Location (Bldg, Elev, Room/Area): AUX, 45.00 ft, CAL-AB-421

Manufacturer/Model: \_\_\_\_\_

**Instructions for Completing Checklist**

This checklist may be used to document the results of the Seismic Walkdown of an item of equipment on the SWEL. The space below each of the following questions may be used to record the results of judgments and findings. Additional space is provided at the end of this checklist for documenting other comments.

**Anchorage**

1. Is anchorage configuration verification required (i.e., is the item one of the 50% of SWEL items requiring such verification)? No
  
2. Is the anchorage free of bent, broken, missing or loose hardware? No  
*Anchorage is inaccessible.*
  
3. Is the anchorage free of corrosion that is more than mild surface oxidation? No  
*Anchorage is inaccessible.*
  
4. Is the anchorage free of visible cracks in the concrete near the anchors? No  
*Anchorage is inaccessible.*
  
5. Is the anchorage configuration consistent with plant documentation? (Note: This question only applies if the item is one of the 50% for which an anchorage configuration verification is required.) Not Applicable
  
6. Based on the above anchorage evaluations, is the anchorage free of potentially adverse seismic conditions? No

---

**Interaction Effects**

**ATTACHMENT 3**  
**WALKDOWN CHECKLISTS**

---

Status: Y  N  U

**Seismic Walkdown Checklist (SWC)**

Equipment ID No.: 1PNL1C62C

Equipment Class: (20) Instrumentation and Control Panels and Cabinets

Equipment Description: 1B DG LOCAL CONTROL PANEL

---

7. Are soft targets free from impact by nearby equipment or structures? Yes
8. Are overhead equipment, distribution systems, ceiling tiles and lighting, and masonry block walls not likely to collapse onto the equipment? Yes  
*An overhead lighting in zone of influence of gages and switches.  
10/3/12 - Overhead lights were deemed not a credible seismic concern due to their lightweight and to typical construction practices. Also, they have been previously evaluated by CCNPP and found seismically acceptable.*
9. Do attached lines have adequate flexibility to avoid damage? Yes
10. Based on the above seismic interaction evaluations, is equipment free of potentially adverse seismic interaction effects? Yes
- 

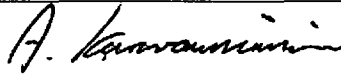
**Other Adverse Conditions**

11. Have you looked for and found no adverse seismic conditions that could adversely affect the safety functions of the equipment? No  
*Cabinet is inaccessible for internal inspection.*
- 

**Comments**

---

Evaluated by:



A. Karavoussianis

Date: 11/09/2012



C. Figliolini

11/09/2012

---

**Photos**

---

**ATTACHMENT 3**  
**WALKDOWN CHECKLISTS**

---

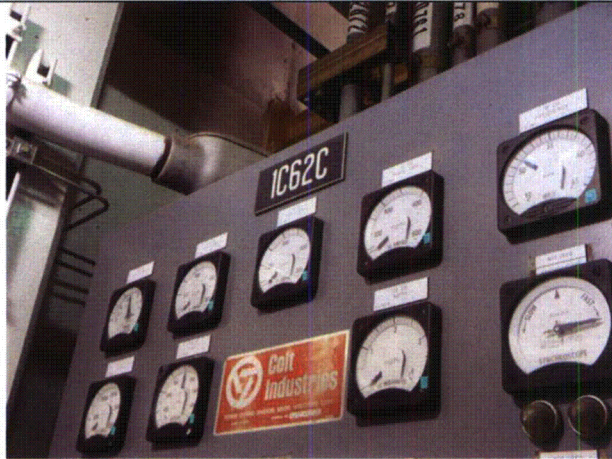
Status: Y  N  U

**Seismic Walkdown Checklist (SWC)**

Equipment ID No.: 1PNL1C62C

Equipment Class: (20) Instrumentation and Control Panels and Cabinets

Equipment Description: 1B DG LOCAL CONTROL PANEL



1PNL1C62C 8-13-12 135



1PNL1C62C 8-13-12 136

**ATTACHMENT 3**  
**WALKDOWN CHECKLISTS**

---

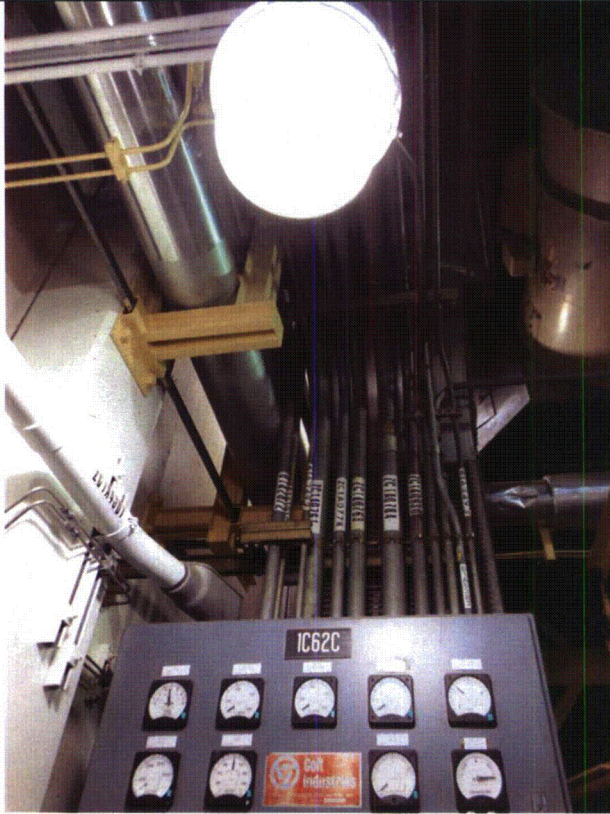
Status: Y  N  U

**Seismic Walkdown Checklist (SWC)**

Equipment ID No.: 1PNL1C62C

Equipment Class: (20) Instrumentation and Control Panels and Cabinets

Equipment Description: 1B DG LOCAL CONTROL PANEL



1PNL1C62C 8-13-12 137



1PNL1C62C 8-13-12 138

**ATTACHMENT 3**  
**WALKDOWN CHECKLISTS**

---

Status: Y  N  U

**Seismic Walkdown Checklist (SWC)**

Equipment ID No.: 1PNL1C62C

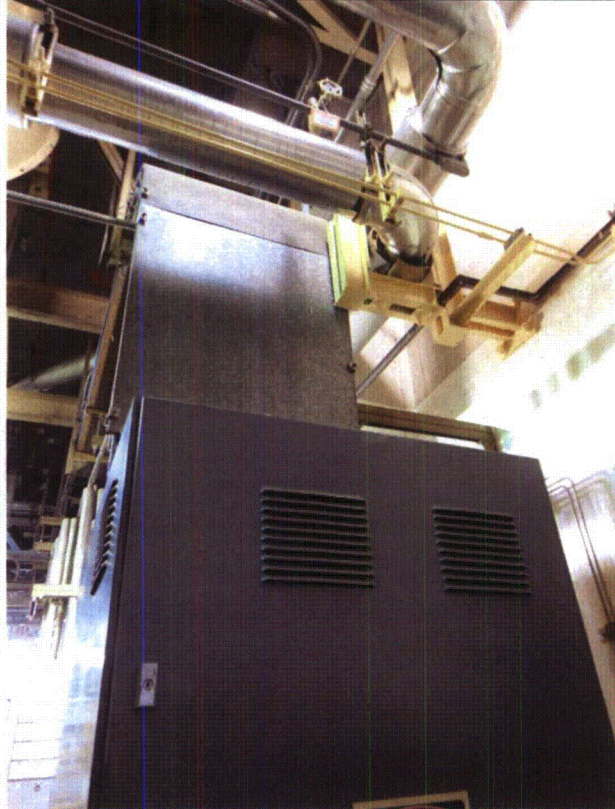
Equipment Class: (20) Instrumentation and Control Panels and Cabinets

Equipment Description: 1B DG LOCAL CONTROL PANEL

---



1PNL1C62C 8-13-12 139



1PNL1C62C 8-13-12 141

---

**ATTACHMENT 3**  
**WALKDOWN CHECKLISTS**

---

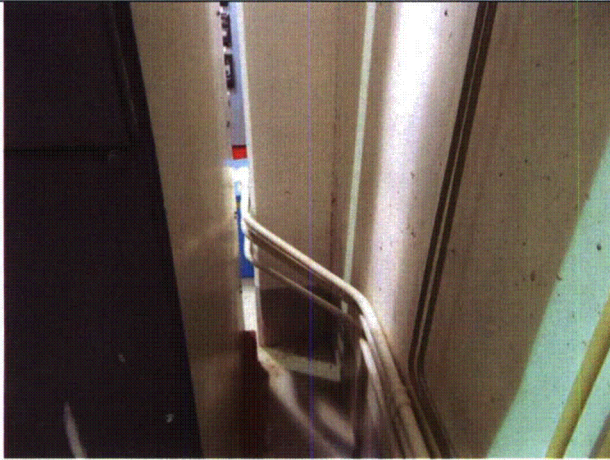
Status: Y  N  U

**Seismic Walkdown Checklist (SWC)**

Equipment ID No.: 1PNL1C62C

Equipment Class: (20) Instrumentation and Control Panels and Cabinets

Equipment Description: 1B DG LOCAL CONTROL PANEL



1PNL1C62C 8-13-12 142



1PNL1C62C 8-13-12 143

**ATTACHMENT 3**  
**WALKDOWN CHECKLISTS**

---

Status:  Y  N  U

**Seismic Walkdown Checklist (SWC)**

Equipment ID No.: 1PNL1C67

Equipment Class: (20) Instrumentation and Control Panels and Cabinets

Equipment Description: ESFAS ACT LOGIC & RELAY CAB A

---

Project: CCNPP 1 SWEL

Location (Bldg, Elev, Room/Area): AUX, 27.00 ft, CAL-AB-306

Manufacturer/Model: \_\_\_\_\_

---

**Instructions for Completing Checklist**

This checklist may be used to document the results of the Seismic Walkdown of an item of equipment on the SWEL. The space below each of the following questions may be used to record the results of judgments and findings. Additional space is provided at the end of this checklist for documenting other comments.

---

**Anchorage**

1. Is anchorage configuration verification required (i.e., is the item one of the 50% of SWEL items requiring such verification)? Yes
  
  2. Is the anchorage free of bent, broken, missing or loose hardware? Yes
  
  3. Is the anchorage free of corrosion that is more than mild surface oxidation? Yes
  
  4. Is the anchorage free of visible cracks in the concrete near the anchors? Yes
  
  5. Is the anchorage configuration consistent with plant documentation? (Note: This question only applies if the item is one of the 50% for which an anchorage configuration verification is required.) Yes  
*Anchorage is consistent with calculation CA02066.*
  
  6. Based on the above anchorage evaluations, is the anchorage free of potentially adverse seismic conditions? Yes
- 

**Interaction Effects**

**ATTACHMENT 3**  
**WALKDOWN CHECKLISTS**

---

Status:  Y  N  U

**Seismic Walkdown Checklist (SWC)**

Equipment ID No.: 1PNL1C67

Equipment Class: (20) Instrumentation and Control Panels and Cabinets

Equipment Description: ESFAS ACT LOGIC & RELAY CAB A

---

- |     |  |     |
|-----|--|-----|
| 7.  | Are soft targets free from impact by nearby equipment or structures?   | Yes |
|     |  |     |
| 8.  | Are overhead equipment, distribution systems, ceiling tiles and lighting, and masonry block walls not likely to collapse onto the equipment? | Yes |
|     |  |     |
| 9.  | Do attached lines have adequate flexibility to avoid damage?   | Yes |
|     |  |     |
| 10. | Based on the above seismic interaction evaluations, is equipment free of potentially adverse seismic interaction effects?                    | Yes |
- 

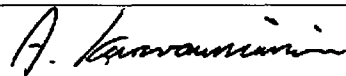
**Other Adverse Conditions**

- |     |  |     |
|-----|--|-----|
| 11. | Have you looked for and found no adverse seismic conditions that could adversely affect the safety functions of the equipment? | Yes |
|-----|--|-----|
- 

**Comments**

---

Evaluated by:



A. Karavoussianis

Date: 11/09/2012



C. Figliolini

11/09/2012

---

**Photos**

---



**ATTACHMENT 3**  
**WALKDOWN CHECKLISTS**

---

Status:  Y  N  U

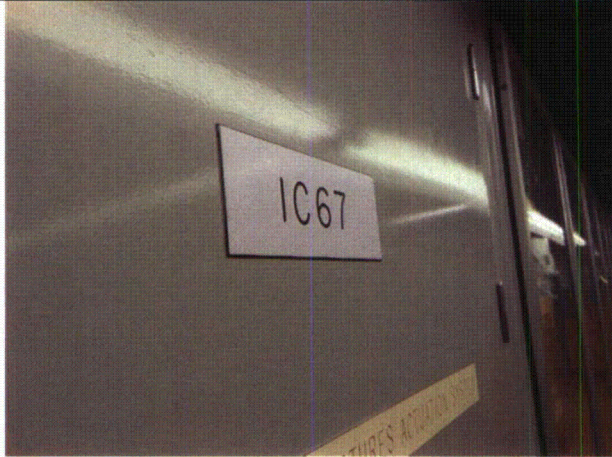
**Seismic Walkdown Checklist (SWC)**

Equipment ID No.: 1PNL1C67

Equipment Class: (20) Instrumentation and Control Panels and Cabinets

Equipment Description: ESFAS ACT LOGIC & RELAY CAB A

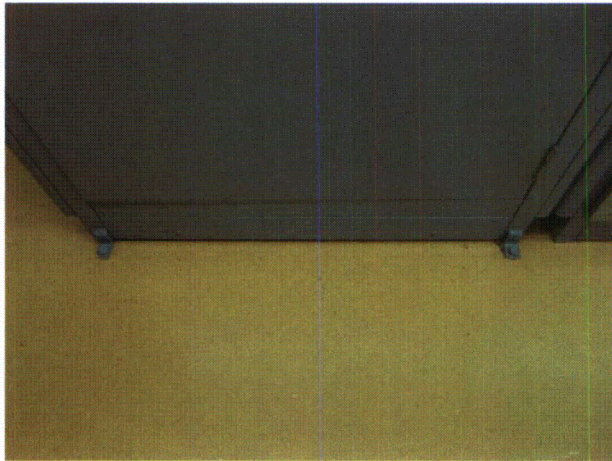
---



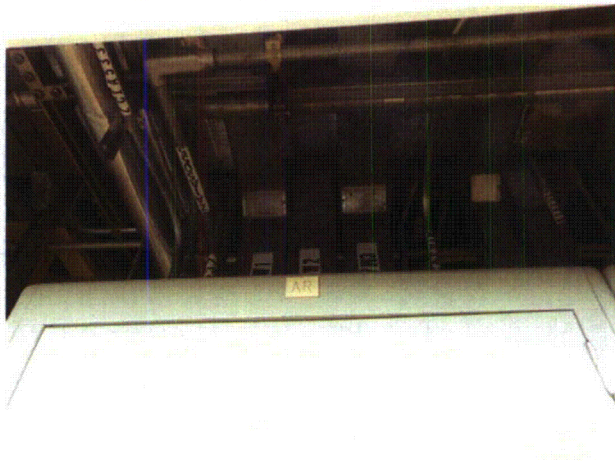
1PNL1C67 8-14-12 074



1PNL1C67 8-14-12 075



1PNL1C67 8-14-12 076



1PNL1C67 8-14-12 077

---

**ATTACHMENT 3**  
**WALKDOWN CHECKLISTS**

---

Status:  Y  N  U

**Seismic Walkdown Checklist (SWC)**

Equipment ID No.: 1PNL1C67

Equipment Class: (20) Instrumentation and Control Panels and Cabinets

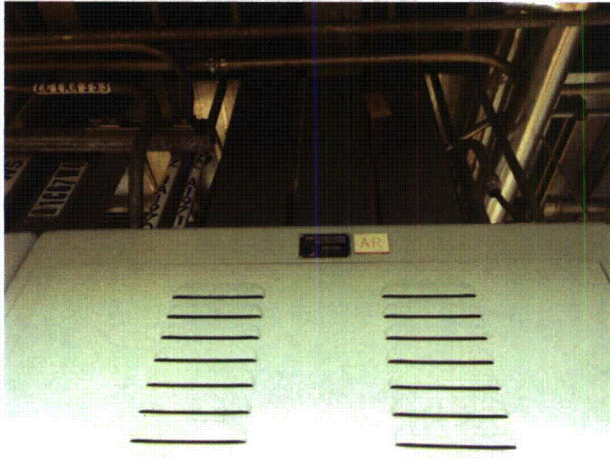
Equipment Description: ESFAS ACT LOGIC & RELAY CAB A



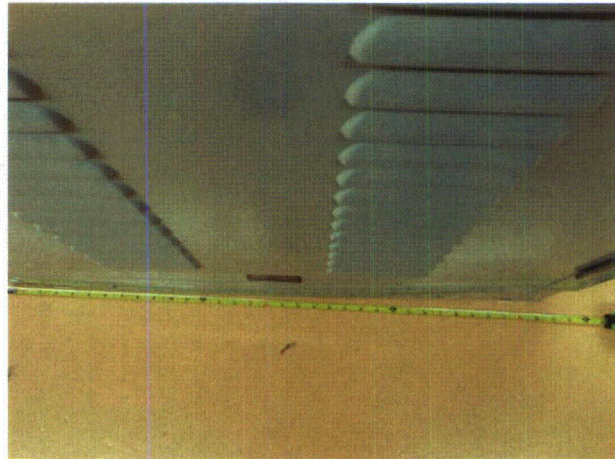
1PNL1C67 8-14-12 078



1PNL1C67 8-14-12 079



1PNL1C67 8-14-12 080



1PNL1C67 8-14-12 081

**ATTACHMENT 3**  
**WALKDOWN CHECKLISTS**

---

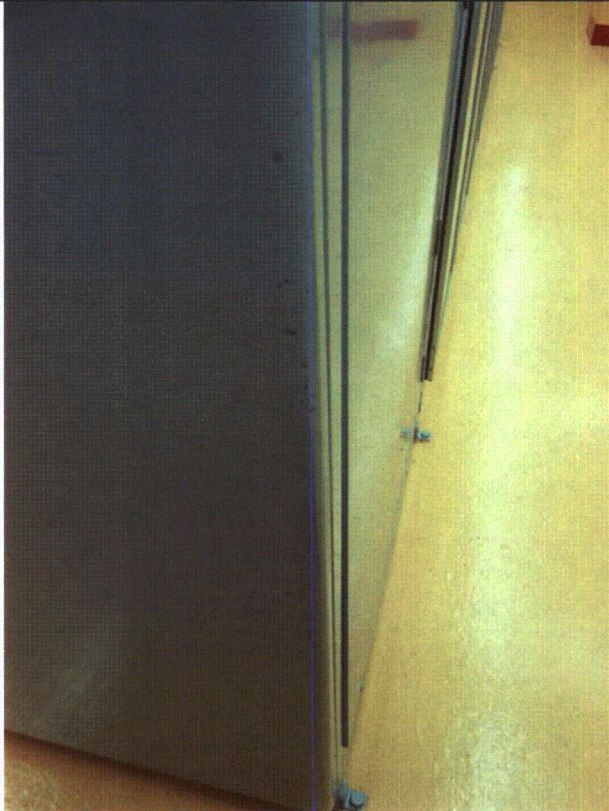
Status:  Y  N  U

**Seismic Walkdown Checklist (SWC)**

Equipment ID No.: 1PNL1C67

Equipment Class: (20) Instrumentation and Control Panels and Cabinets

Equipment Description: ESFAS ACT LOGIC & RELAY CAB A



1PNL1C67 8-14-12 082



1PNL1C67 8-14-12 083



1PNL1C67 8-14-12 084

**ATTACHMENT 3**  
**WALKDOWN CHECKLISTS**

---

Status: Y  N  U

**Seismic Walkdown Checklist (SWC)**

Equipment ID No.: 1PNL1D11

Equipment Class: (2) Low Voltage Switchgear

Equipment Description: 125VDC PNL DC11 1D11

Project: CCNPP 1.SWEL

Location (Bldg, Elev, Room/Area): AUX, 27.00 ft, CAL-AB-306

Manufacturer/Model:

**Instructions for Completing Checklist**

This checklist may be used to document the results of the Seismic Walkdown of an item of equipment on the SWEL. The space below each of the following questions may be used to record the results of judgments and findings. Additional space is provided at the end of this checklist for documenting other comments.

**Anchorage**

- |   |     |
|---|-----|
| 1. Is anchorage configuration verification required (i.e., is the item one of the 50% of SWEL items requiring such verification)?   | Yes |
| <br>  |     |
| 2. Is the anchorage free of bent, broken, missing or loose hardware?<br><i>Anchorage is inaccessible.</i>   | No  |
| <br>  |     |
| 3. Is the anchorage free of corrosion that is more than mild surface oxidation?<br><i>Anchorage is inaccessible.</i>  | No  |
| <br>  |     |
| 4. Is the anchorage free of visible cracks in the concrete near the anchors?<br><i>Anchorage is inaccessible.</i>   | No  |
| <br>  |     |
| 5. Is the anchorage configuration consistent with plant documentation? (Note: This question only applies if the item is one of the 50% for which an anchorage configuration verification is required.)<br><i>Anchorage is inaccessible.</i> | No  |
| <br>  |     |
| 6. Based on the above anchorage evaluations, is the anchorage free of potentially adverse seismic conditions?<br><i>Anchorage is inaccessible.</i>  | No  |

---

**Interaction Effects**

C-383

**ATTACHMENT 3**  
**WALKDOWN CHECKLISTS**

---

Status: Y  N  U

**Seismic Walkdown Checklist (SWC)**

Equipment ID No.: 1PNL1D11

Equipment Class: (2) Low Voltage Switchgear

Equipment Description: 125VDC PNL DC11 1D11

---

7. Are soft targets free from impact by nearby equipment or structures? Yes

*Observed a 3/8" clearance to 1D01 that is behind 1D11 and 3/8" to 1B13 adjacent to 1D11. This cabinet 1D11 is 14.5"x64"x90" high. Evaluated this condition using 8Hz and 2% damping. The resulting displacement is 0.147", which is less than 3/8", therefore the gap is acceptable.*

*Using response spectrum AB027D2N.dat*

*Sa = 0.3g*

*d = 2\*1.6\*0.3\*386.4/(8\*2pi)^2 = 0.147" < 0.375" : OK.*

8. Are overhead equipment, distribution systems, ceiling tiles and lighting, and masonry block walls not likely to collapse onto the equipment? Yes

9. Do attached lines have adequate flexibility to avoid damage? Yes

10. Based on the above seismic interaction evaluations, is equipment free of potentially adverse seismic interaction effects? Yes

---

**Other Adverse Conditions**

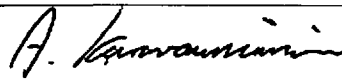
11. Have you looked for and found no adverse seismic conditions that could adversely affect the safety functions of the equipment? No

*Cabinet is inaccessible for internal inspection.*

---

**Comments**

Evaluated by:



A. Karavoussianis

Date: 11/09/2012



C. Figliolini

11/09/2012

**ATTACHMENT 3**  
**WALKDOWN CHECKLISTS**

---

Status: Y  N  U

**Seismic Walkdown Checklist (SWC)**

Equipment ID No.: 1PNL1D11

Equipment Class: (2) Low Voltage Switchgear

Equipment Description: 125VDC PNL DC11 1D11

---

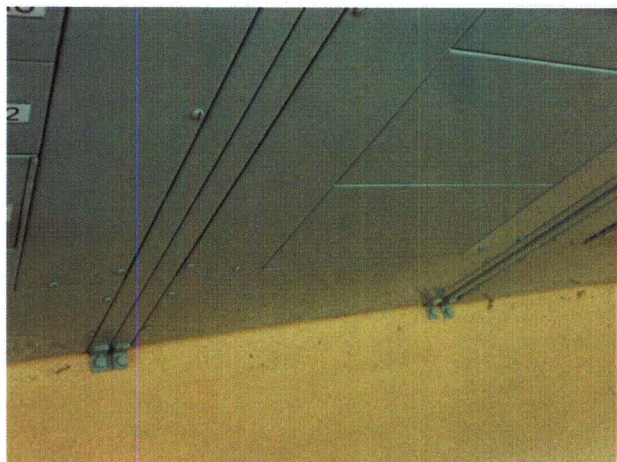
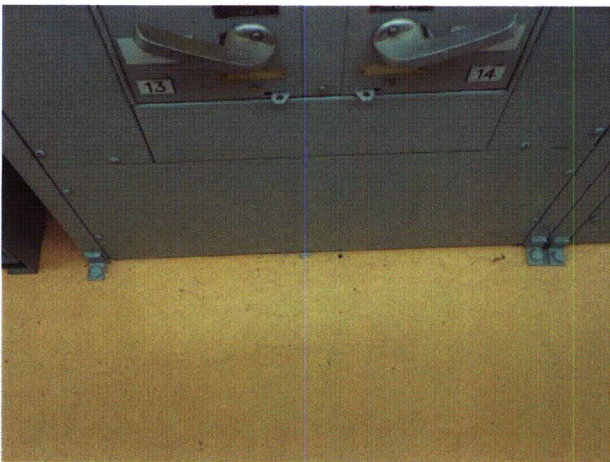
**Photos**



1PNL1D11 8-14-12 085



1PNL1D11 8-14-12 086



# ATTACHMENT 3

## WALKDOWN CHECKLISTS

Status: Y  N  U

### Seismic Walkdown Checklist (SWC)

Equipment ID No.: 1PNL1D11

Equipment Class: (2) Low Voltage Switchgear

Equipment Description: 125VDC PNL DC11 1D11

1PNL1D11 8-14-12 087

1PNL1D11 8-14-12 088



1PNL1D11 8-14-12 089



1PNL1D11 8-14-12 090



1PNL1D11 8-14-12 092

**ATTACHMENT 3**  
**WALKDOWN CHECKLISTS**

---

Status: Y  N  U

**Seismic Walkdown Checklist (SWC)**

Equipment ID No.: 1PO5432

Equipment Class: (10) Air Handlers

Equipment Description: DIESEL RM 1B SUPPLY DAMPER

Project: CCNPP 1 SWEL

Location (Bldg, Elev, Room/Area): AUX, 45.00 ft, CAL-AB-421

Manufacturer/Model:

**Instructions for Completing Checklist**

This checklist may be used to document the results of the Seismic Walkdown of an item of equipment on the SWEL. The space below each of the following questions may be used to record the results of judgments and findings. Additional space is provided at the end of this checklist for documenting other comments.

**Anchorage**

1. Is anchorage configuration verification required (i.e., is the item one of the 50% of SWEL items requiring such verification)? Yes  
*The damper and associated duct work are supported off the walls.*
  
2. Is the anchorage free of bent, broken, missing or loose hardware? Yes
  
3. Is the anchorage free of corrosion that is more than mild surface oxidation? Yes
  
4. Is the anchorage free of visible cracks in the concrete near the anchors? Yes
  
5. Is the anchorage configuration consistent with plant documentation? (Note: This question only applies if the item is one of the 50% for which an anchorage configuration verification is required.) No  
*Need plant documentation to determine if anchorage is consistent with as-built sketch. CR-2012-009738*
  
6. Based on the above anchorage evaluations, is the anchorage free of potentially adverse seismic conditions? No

---

**Interaction Effects**



**ATTACHMENT 3**  
**WALKDOWN CHECKLISTS**

---

Status: Y  N  U

**Seismic Walkdown Checklist (SWC)**

Equipment ID No.: 1PO5432

Equipment Class: (10) Air Handlers

Equipment Description: DIESEL RM 1B SUPPLY DAMPER

---

7. Are soft targets free from impact by nearby equipment or structures? Yes
8. Are overhead equipment, distribution systems, ceiling tiles and lighting, and masonry block walls not likely to collapse onto the equipment? Yes
9. Do attached lines have adequate flexibility to avoid damage? Yes
10. Based on the above seismic interaction evaluations, is equipment free of potentially adverse seismic interaction effects? Yes
- 

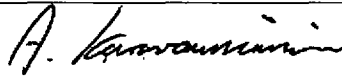
**Other Adverse Conditions**

11. Have you looked for and found no adverse seismic conditions that could adversely affect the safety functions of the equipment? Yes
- 

**Comments**

---

Evaluated by:



A. Karavoussianis

Date: 11/09/2012

---



C. Figliolini

11/09/2012

---

**Photos**

---

**ATTACHMENT 3**  
**WALKDOWN CHECKLISTS**

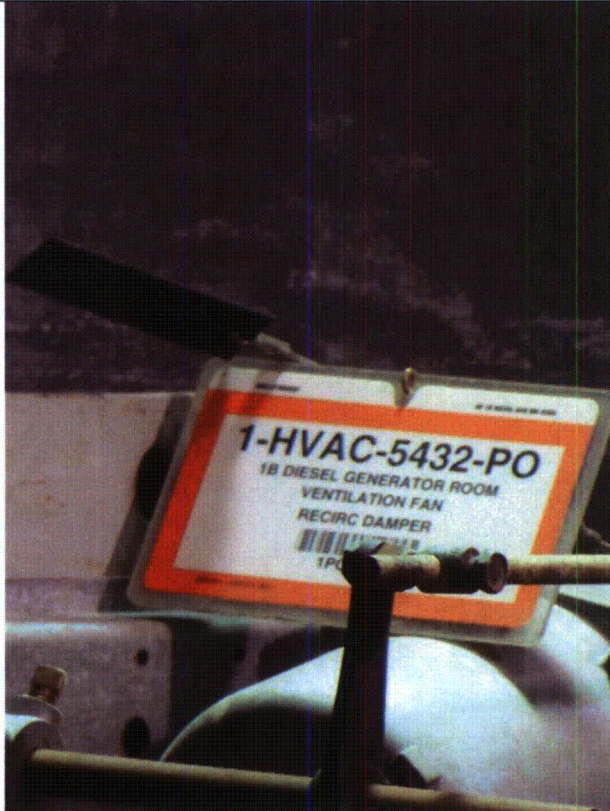
Status: Y  N  U

**Seismic Walkdown Checklist (SWC)**

Equipment ID No.: 1PO5432

Equipment Class: (10) Air Handlers

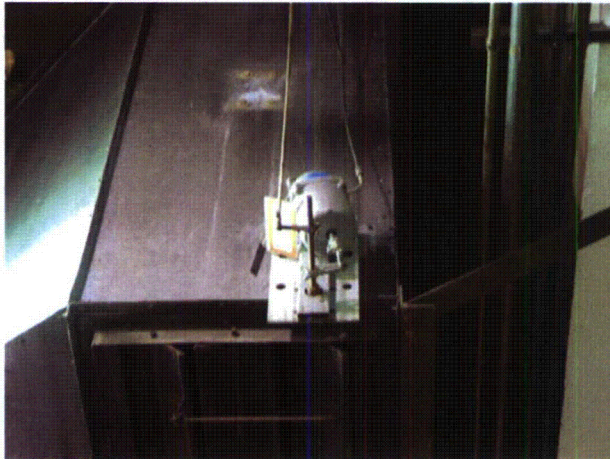
Equipment Description: DIESEL RM 1B SUPPLY DAMPER



1PO5432 8-13-12 149



1PO5432 8-13-12 150



1PO5432 8-13-12 151



1PO5432 8-13-12 152

**ATTACHMENT 3**  
**WALKDOWN CHECKLISTS**

---

Status: Y  N  U

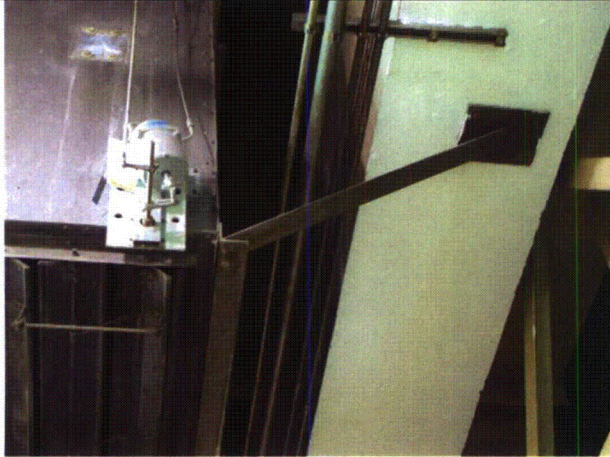
**Seismic Walkdown Checklist (SWC)**

Equipment ID No.: 1PO5432

Equipment Class: (10) Air Handlers

Equipment Description: DIESEL RM 1B SUPPLY DAMPER

---



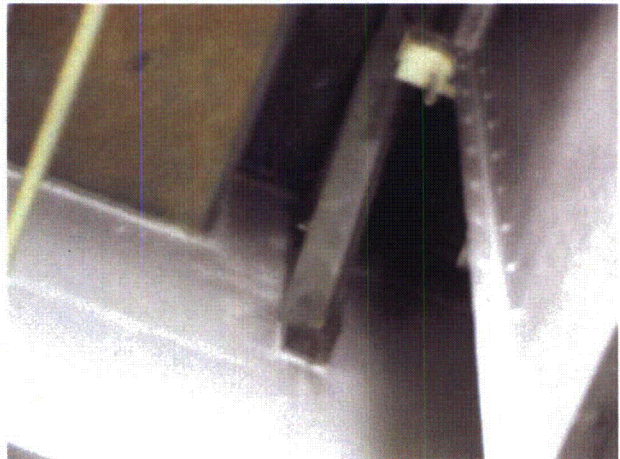
1PO5432 8-13-12 154



1PO5432 8-13-12 157



1PO5432 8-13-12 158



1PO5432 8-13-12 161

**ATTACHMENT 3**  
**WALKDOWN CHECKLISTS**

---

Status: Y  N  U

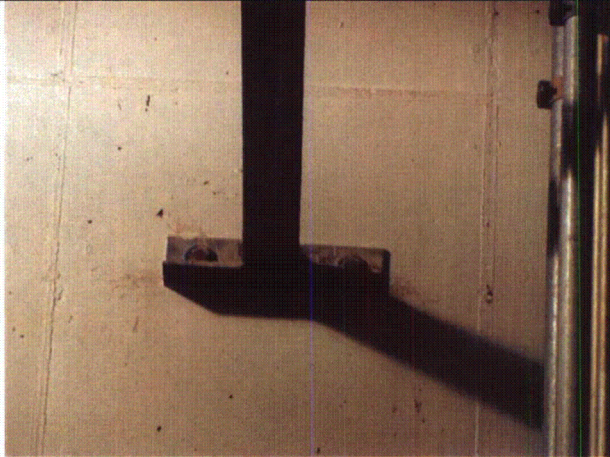
**Seismic Walkdown Checklist (SWC)**

Equipment ID No.: 1PO5432

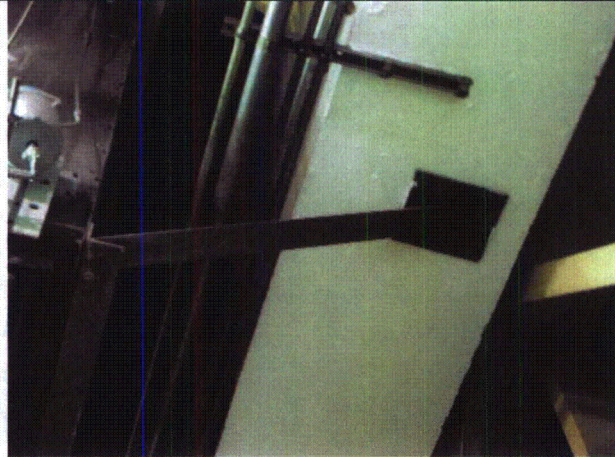
Equipment Class: (10) Air Handlers

Equipment Description: DIESEL RM 1B SUPPLY DAMPER

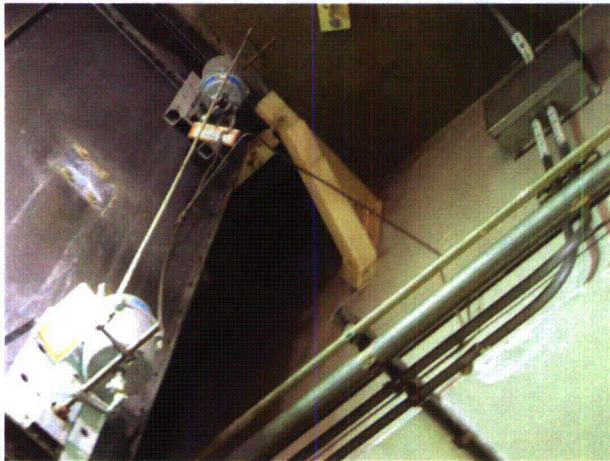
---



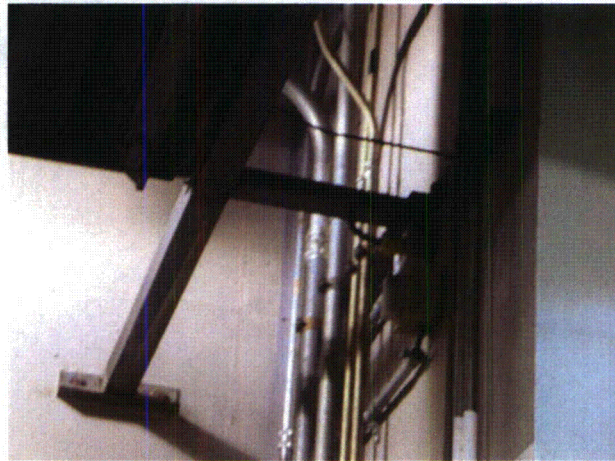
1PO5432 8-13-12 162



1PO5432 8-13-12 163



1PO5432 8-13-12 165



1PO5432 8-13-12 166

---

**ATTACHMENT 3**  
**WALKDOWN CHECKLISTS**

---

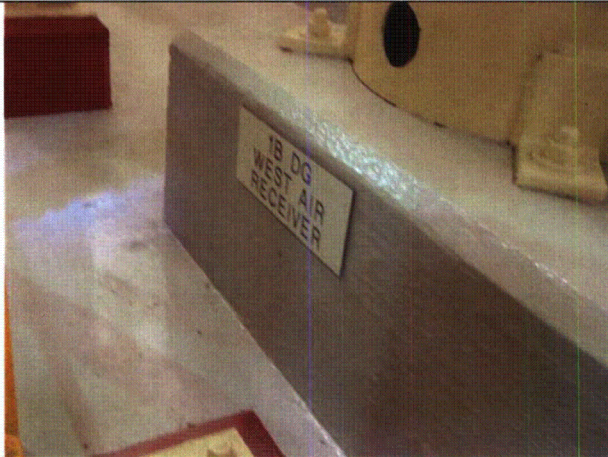
Status: Y  N  U

**Seismic Walkdown Checklist (SWC)**

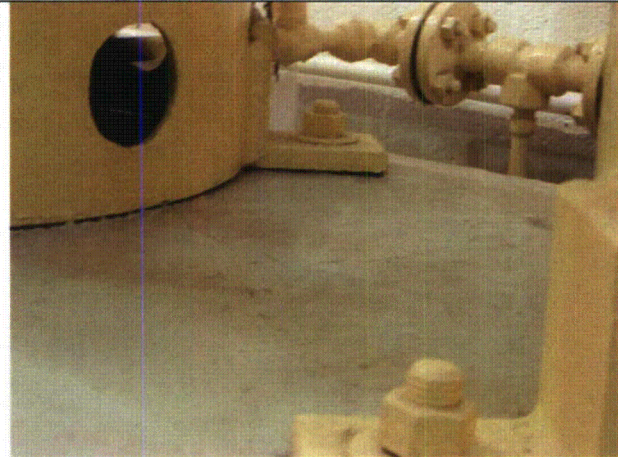
Equipment ID No.: 1PO5432

Equipment Class: (10) Air Handlers

Equipment Description: DIESEL RM 1B SUPPLY DAMPER



1PO5432 8-13-12 167



1PO5432 8-13-12 168

Status: Y  N  U

**Seismic Walkdown Checklist (SWC)**

Equipment ID No.: 1PT5313A

Equipment Class: (20) Instrumentation and Control Panels and Cabinets

Equipment Description: CONTAINMENT PRESSURE TO SIAS

Project: CCNPP 1 SWEL

Location (Bldg, Elev, Room/Area): AUX, 45.00 ft, CAL-AB-429

Manufacturer/Model:

**Instructions for Completing Checklist**

This checklist may be used to document the results of the Seismic Walkdown of an item of equipment on the SWEL. The space below each of the following questions may be used to record the results of judgments and findings. Additional space is provided at the end of this checklist for documenting other comments.

**Anchorage**

1. Is anchorage configuration verification required (i.e., is the item one of the 50% of SWEL items requiring such verification)? Yes
  
  
  2. Is the anchorage free of bent, broken, missing or loose hardware? Yes
-

**ATTACHMENT 3**  
**WALKDOWN CHECKLISTS**

---

Status: Y  N  U

**Seismic Walkdown Checklist (SWC)**

Equipment ID No.: 1PT5313A

Equipment Class: (20) Instrumentation and Control Panels and Cabinets

Equipment Description: CONTAINMENT PRESSURE TO SIAS

---

3. Is the anchorage free of corrosion that is more than mild surface oxidation? Yes
4. Is the anchorage free of visible cracks in the concrete near the anchors? Yes
5. Is the anchorage configuration consistent with plant documentation? (Note: This question only applies if the item is one of the 50% for which an anchorage configuration verification is required.) No  
*Anchorage is 13/16 F-F bolt pattern c/c 4.5" x 6.5", vertical weld approximately 2" long. Anchorage verified by drawings 65944 and 91005 (J-104). The web of the support channel is not fully welded to the wall anchor plates as shown on 91005. CR-2012-009678*
6. Based on the above anchorage evaluations, is the anchorage free of potentially adverse seismic conditions? No

---

**Interaction Effects**

7. Are soft targets free from impact by nearby equipment or structures? Yes
8. Are overhead equipment, distribution systems, ceiling tiles and lighting, and masonry block walls not likely to collapse onto the equipment? Yes
9. Do attached lines have adequate flexibility to avoid damage? Yes
-

**ATTACHMENT 3**  
**WALKDOWN CHECKLISTS**

---

Status: Y  N  U

**Seismic Walkdown Checklist (SWC)**

Equipment ID No.: 1PT5313A

Equipment Class: (20) Instrumentation and Control Panels and Cabinets

Equipment Description: CONTAINMENT PRESSURE TO SIAS

- 
10. Based on the above seismic interaction evaluations, is equipment free of potentially adverse seismic interaction effects? Yes
- 

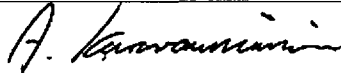
**Other Adverse Conditions**

11. Have you looked for and found no adverse seismic conditions that could adversely affect the safety functions of the equipment? Yes
- 

**Comments**

---

Evaluated by:



A. Karavoussianis

Date: 11/09/2012



C. Figliolini

11/09/2012

---

**Photos**

**ATTACHMENT 3**  
**WALKDOWN CHECKLISTS**

---

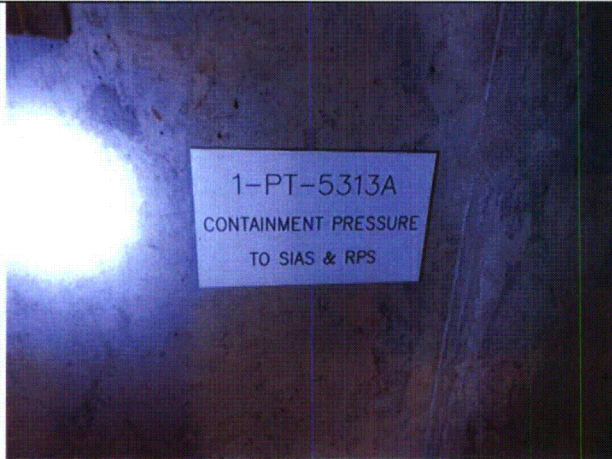
Status: Y  N  U

**Seismic Walkdown Checklist (SWC)**

Equipment ID No.: 1PT5313A

Equipment Class: (20) Instrumentation and Control Panels and Cabinets

Equipment Description: CONTAINMENT PRESSURE TO SIAS



1PT5313A 8-8-12 097



1PT5313A 8-8-12 098



**ATTACHMENT 3**  
**WALKDOWN CHECKLISTS**

---

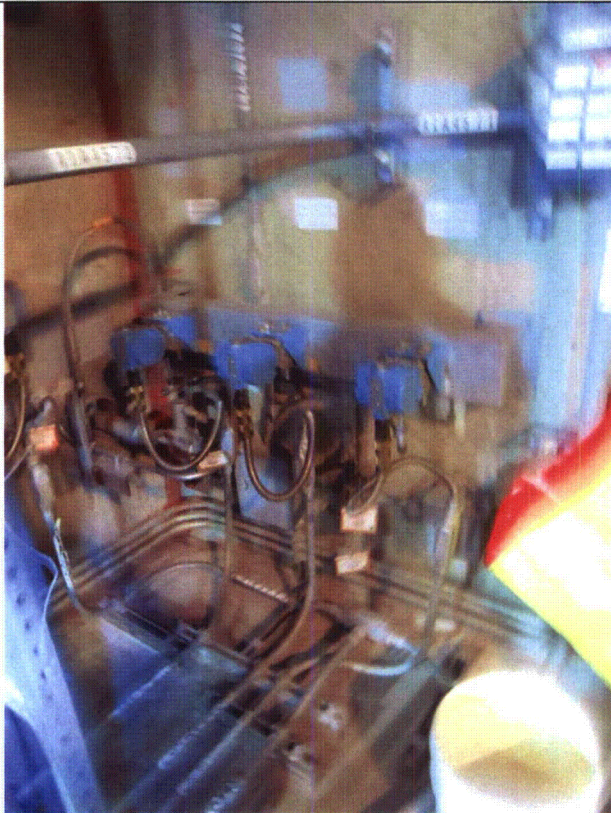
Status: Y  N  U

**Seismic Walkdown Checklist (SWC)**

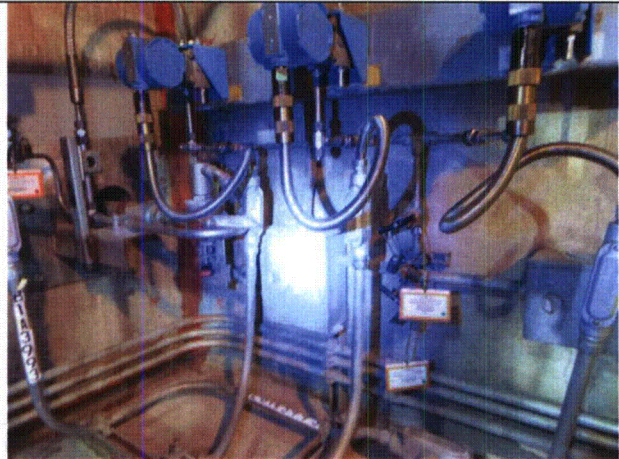
Equipment ID No.: 1PT5313A

Equipment Class: (20) Instrumentation and Control Panels and Cabinets

Equipment Description: CONTAINMENT PRESSURE TO SIAS



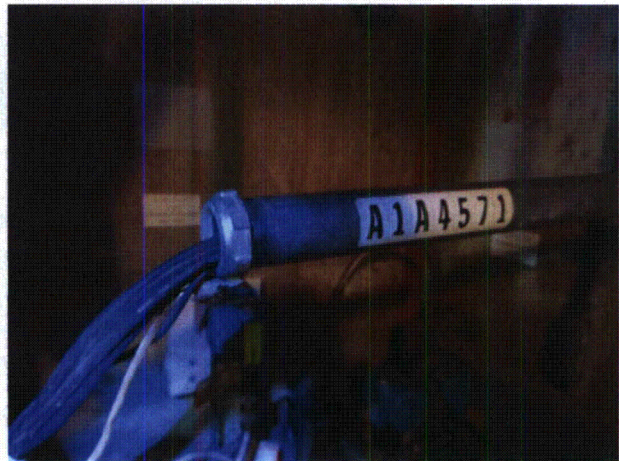
1PT5313A 8-8-12 099



1PT5313A 8-8-12 101



1PT5313A 8-8-12 102



1PT5313A 8-8-12 103

**ATTACHMENT 3**  
**WALKDOWN CHECKLISTS**

---

Status:  Y  N  U

**Seismic Walkdown Checklist (SWC)**

Equipment ID No.: 1PT5313B

Equipment Class: (20) Instrumentation and Control Panels and Cabinets

Equipment Description: CONTAINMENT PRESSURE TO SIAS

Project: CCNPP 1 SWEL

Location (Bldg, Elev, Room/Area): AUX, 45.00 ft, CAL-AB-429

Manufacturer/Model:

**Instructions for Completing Checklist**

This checklist may be used to document the results of the Seismic Walkdown of an item of equipment on the SWEL. The space below each of the following questions may be used to record the results of judgments and findings. Additional space is provided at the end of this checklist for documenting other comments.

**Anchorage**

1. Is anchorage configuration verification required (i.e., is the item one of the 50% of SWEL items requiring such verification)? No
  
2. Is the anchorage free of bent, broken, missing or loose hardware? Yes
  
3. Is the anchorage free of corrosion that is more than mild surface oxidation? Yes  
*There is some surface oxidation on wall plate < 1/32" and it is not near weld. The plate stresses in the vicinity of the oxidation are judged to be small, therefore not a seismic concern.*
  
4. Is the anchorage free of visible cracks in the concrete near the anchors? Yes
  
5. Is the anchorage configuration consistent with plant documentation? (Note: This question only applies if the item is one of the 50% for which an anchorage configuration verification is required.) Not Applicable
  
6. Based on the above anchorage evaluations, is the anchorage free of potentially adverse seismic conditions? Yes

---

**Interaction Effects**

**ATTACHMENT 3**  
**WALKDOWN CHECKLISTS**

---

Status:  Y  N  U

**Seismic Walkdown Checklist (SWC)**

Equipment ID No.: 1PT5313B

Equipment Class: (20) Instrumentation and Control Panels and Cabinets

Equipment Description: CONTAINMENT PRESSURE TO SIAS

---

- |     |  |     |
|-----|--|-----|
| 7.  | Are soft targets free from impact by nearby equipment or structures?   | Yes |
|     |  |     |
| 8.  | Are overhead equipment, distribution systems, ceiling tiles and lighting, and masonry block walls not likely to collapse onto the equipment? | Yes |
|     |  |     |
| 9.  | Do attached lines have adequate flexibility to avoid damage?   | Yes |
|     |  |     |
| 10. | Based on the above seismic interaction evaluations, is equipment free of potentially adverse seismic interaction effects?                    | Yes |

---



**Other Adverse Conditions**

- |     |  |     |
|-----|--|-----|
| 11. | Have you looked for and found no adverse seismic conditions that could adversely affect the safety functions of the equipment? | Yes |
|-----|--|-----|

---

**Comments**

---

Evaluated by:	 A. Karavoussianis	Date:	<u>11/09/2012</u>
	 C. Figliolini		<u>11/09/2012</u>

---

**Photos**

**ATTACHMENT 3**  
**WALKDOWN CHECKLISTS**

---

Status:  Y  N  U

**Seismic Walkdown Checklist (SWC)**

Equipment ID No.: 1PT5313B

Equipment Class: (20) Instrumentation and Control Panels and Cabinets

Equipment Description: CONTAINMENT PRESSURE TO SIAS



1PT5313B 8-8-12 091



1PT5313B 8-8-12 092

**ATTACHMENT 3**  
**WALKDOWN CHECKLISTS**

---

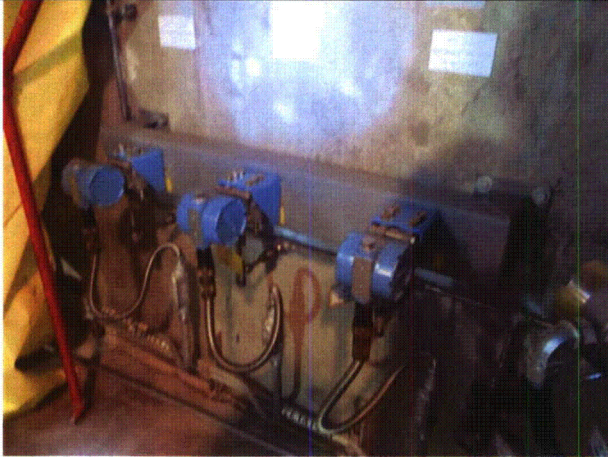
Status:  Y  N  U

**Seismic Walkdown Checklist (SWC)**

Equipment ID No.: 1PT5313B

Equipment Class: (20) Instrumentation and Control Panels and Cabinets

Equipment Description: CONTAINMENT PRESSURE TO SIAS



1PT5313B 8-8-12 093



1PT5313B 8-8-12 094

**ATTACHMENT 3**  
**WALKDOWN CHECKLISTS**

---

Status:  Y  N  U

**Seismic Walkdown Checklist (SWC)**

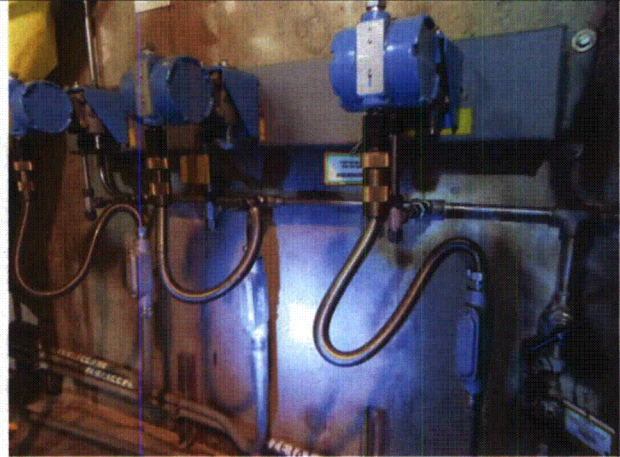
Equipment ID No.: 1PT5313B

Equipment Class: (20) Instrumentation and Control Panels and Cabinets

Equipment Description: CONTAINMENT PRESSURE TO SIAS



1PT5313B 8-8-12 095



1PT5313B 8-8-12 096

# ATTACHMENT 3

## WALKDOWN CHECKLISTS

---

Status: Y  N  U

### Seismic Walkdown Checklist (SWC)

Equipment ID No.: 1PT5315C

Equipment Class: (20) Instrumentation and Control Panels and Cabinets

Equipment Description: CONTAINMENT PRESSURE TO CIS

Project: CCNPP 1 SWEL

Location (Bldg, Elev, Room/Area): AUX, 45.00 ft, CAL-AB-423

Manufacturer/Model:

### Instructions for Completing Checklist

This checklist may be used to document the results of the Seismic Walkdown of an item of equipment on the SWEL. The space below each of the following questions may be used to record the results of judgments and findings. Additional space is provided at the end of this checklist for documenting other comments.

### Anchorage

1. Is anchorage configuration verification required (i.e., is the item one of the 50% of SWEL items requiring such verification)? No
  
2. Is the anchorage free of bent, broken, missing or loose hardware? No  
*The upper left anchor bolt on the left side of the anchor plate is missing. CR-2012-009320 & CR-2012-009333*
  
3. Is the anchorage free of corrosion that is more than mild surface oxidation? Yes
  
4. Is the anchorage free of visible cracks in the concrete near the anchors? Yes
  
5. Is the anchorage configuration consistent with plant documentation? (Note: This question only applies if the item is one of the 50% for which an anchorage configuration verification is required.) Not Applicable
  
6. Based on the above anchorage evaluations, is the anchorage free of potentially adverse seismic conditions? No

---

### Interaction Effects

C-402

**ATTACHMENT 3**  
**WALKDOWN CHECKLISTS**

---

Status: Y  N  U

**Seismic Walkdown Checklist (SWC)**

Equipment ID No.: 1PT5315C

Equipment Class: (20) Instrumentation and Control Panels and Cabinets

Equipment Description: CONTAINMENT PRESSURE TO CIS

---

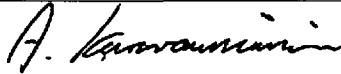

- |     |  |     |
|-----|--|-----|
| 7.  | Are soft targets free from impact by nearby equipment or structures?   | Yes |
|     |  |     |
| 8.  | Are overhead equipment, distribution systems, ceiling tiles and lighting, and masonry block walls not likely to collapse onto the equipment? | Yes |
|     |  |     |
| 9.  | Do attached lines have adequate flexibility to avoid damage?   | Yes |
|     |  |     |
| 10. | Based on the above seismic interaction evaluations, is equipment free of potentially adverse seismic interaction effects?                    | Yes |
- 

**Other Adverse Conditions**

- |     |  |     |
|-----|--|-----|
| 11. | Have you looked for and found no adverse seismic conditions that could adversely affect the safety functions of the equipment? | Yes |
|-----|--|-----|
- 

**Comments**

---

Evaluated by:	 A. Karavoussianis	Date:	11/09/2012
<hr/>			
	 C. Figliolini		11/09/2012

---

**Photos**

---



**ATTACHMENT 3**  
**WALKDOWN CHECKLISTS**

---

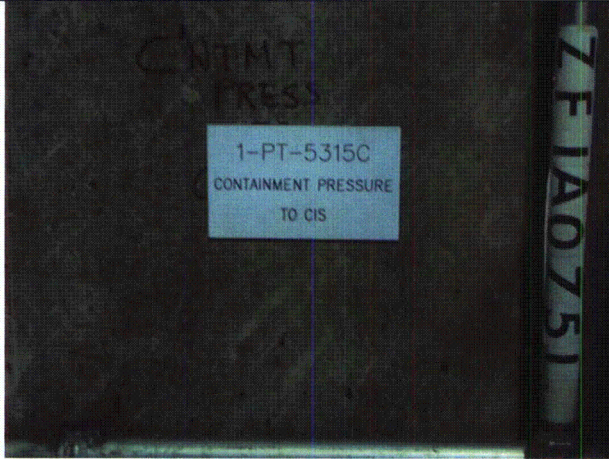
Status: Y  N  U

**Seismic Walkdown Checklist (SWC)**

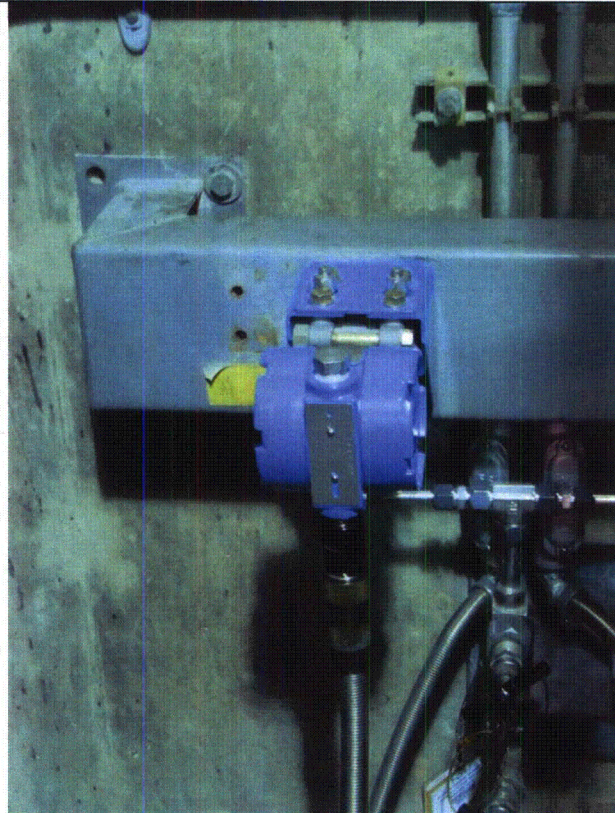
Equipment ID No.: 1PT5315C

Equipment Class: (20) Instrumentation and Control Panels and Cabinets

Equipment Description: CONTAINMENT PRESSURE TO CIS



1PT5315C 8-7-12 001



1PT5315C 8-7-12 002

# ATTACHMENT 3

## WALKDOWN CHECKLISTS

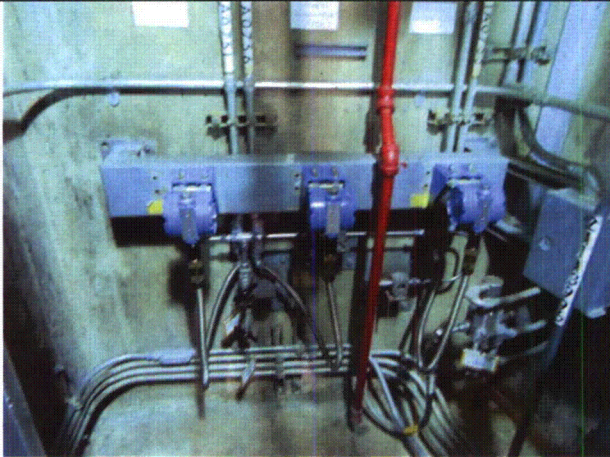
Status: Y  N  U

### Seismic Walkdown Checklist (SWC)

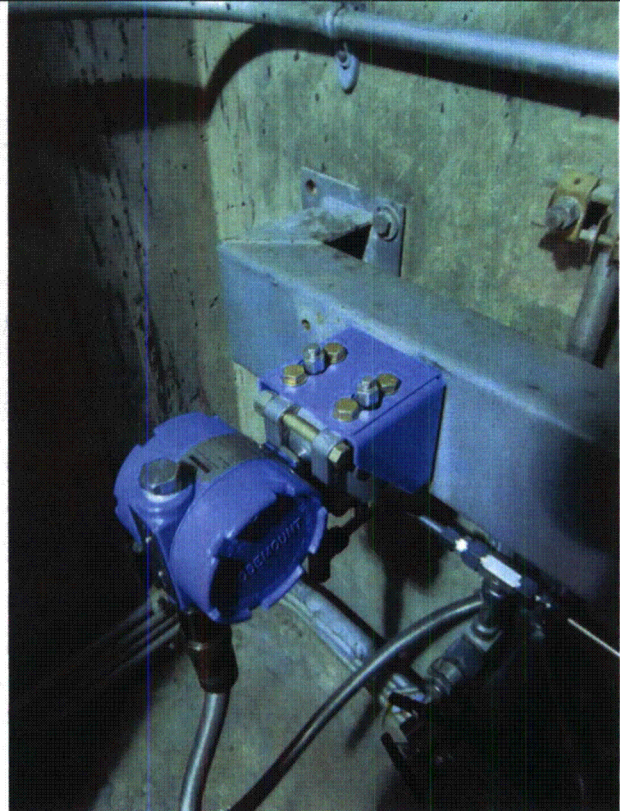
Equipment ID No.: 1PT5315C

Equipment Class: (20) Instrumentation and Control Panels and Cabinets

Equipment Description: CONTAINMENT PRESSURE TO CIS



1PT5315C 8-7-12 003



1PT5315C 8-7-12 004

**ATTACHMENT 3**  
**WALKDOWN CHECKLISTS**

---

Status: Y  N  U

**Seismic Walkdown Checklist (SWC)**

Equipment ID No.: 1PT5315D

Equipment Class: (20) Instrumentation and Control Panels and Cabinets

Equipment Description: CONTAINMENT PRESSURE TO CIS

Project: CCNPP 1 SWEL

Location (Bldg, Elev, Room/Area): AUX, 45.00 ft, CAL-AB-423

Manufacturer/Model:

**Instructions for Completing Checklist**

This checklist may be used to document the results of the Seismic Walkdown of an item of equipment on the SWEL. The space below each of the following questions may be used to record the results of judgments and findings. Additional space is provided at the end of this checklist for documenting other comments.

**Anchorage**

1. Is anchorage configuration verification required (i.e., is the item one of the 50% of SWEL items requiring such verification)? Yes
  
2. Is the anchorage free of bent, broken, missing or loose hardware? No  
*The bottom right anchor bolt is not engaged. CR-2012-009321*
  
3. Is the anchorage free of corrosion that is more than mild surface oxidation? Yes
  
4. Is the anchorage free of visible cracks in the concrete near the anchors? Yes
  
5. Is the anchorage configuration consistent with plant documentation? (Note: This question only applies if the item is one of the 50% for which an anchorage configuration verification is required.) Yes  
*Measured 3/4" F-F anchor bolt nuts and 4-1/2" x 6 3/8" c/c bolting pattern.  
Walkdown as-built anchorage sketch is consistent with drawings 65578 sheet 2 and 91005 (J-104).*
  
6. Based on the above anchorage evaluations, is the anchorage free of potentially adverse seismic conditions? No

---

**Interaction Effects**

C-406

**ATTACHMENT 3**  
**WALKDOWN CHECKLISTS**

---

Status: Y  N  U

**Seismic Walkdown Checklist (SWC)**

Equipment ID No.: 1PT5315D

Equipment Class: (20) Instrumentation and Control Panels and Cabinets

Equipment Description: CONTAINMENT PRESSURE TO CIS

---

- |     |  |     |
|-----|--|-----|
| 7.  | Are soft targets free from impact by nearby equipment or structures?   | Yes |
|     |  |     |
| 8.  | Are overhead equipment, distribution systems, ceiling tiles and lighting, and masonry block walls not likely to collapse onto the equipment? | Yes |
|     |  |     |
| 9.  | Do attached lines have adequate flexibility to avoid damage?   | Yes |
|     |  |     |
| 10. | Based on the above seismic interaction evaluations, is equipment free of potentially adverse seismic interaction effects?                    | Yes |
- 

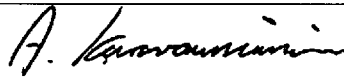
**Other Adverse Conditions**

- |     |  |     |
|-----|--|-----|
| 11. | Have you looked for and found no adverse seismic conditions that could adversely affect the safety functions of the equipment? | Yes |
|-----|--|-----|
- 

**Comments**

---

Evaluated by:



A. Karavoussianis

Date: 11/09/2012



C. Figliolini

11/09/2012

---

**Photos**

---

# ATTACHMENT 3

## WALKDOWN CHECKLISTS

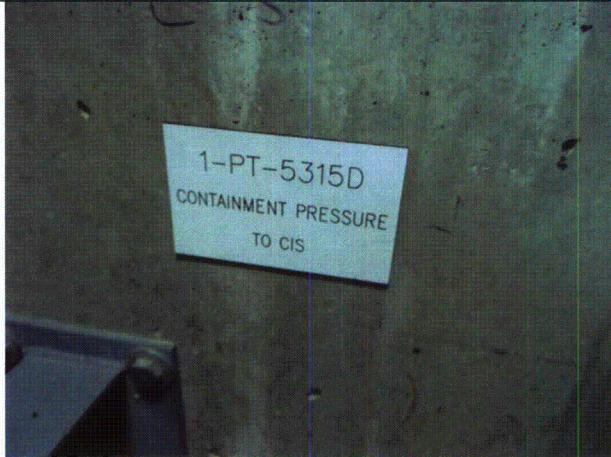
Status: Y  N  U

### Seismic Walkdown Checklist (SWC)

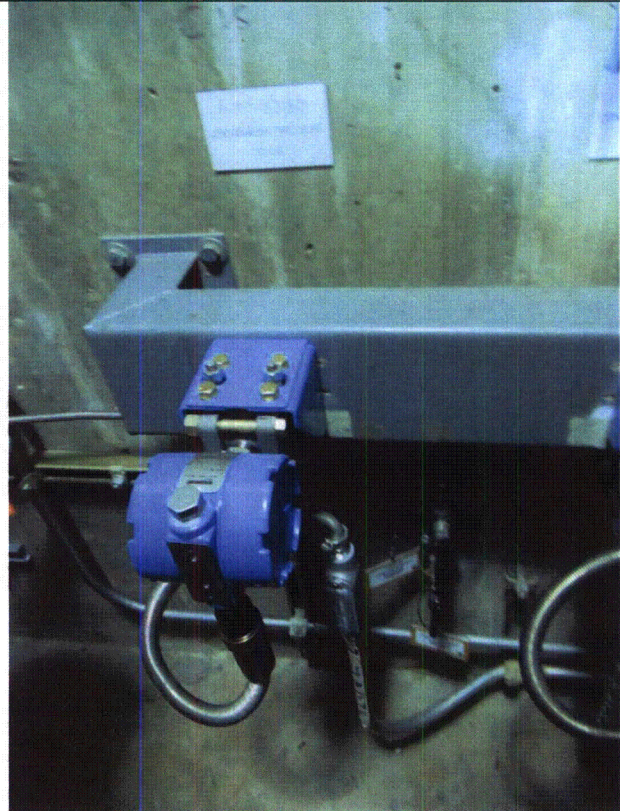
Equipment ID No.: 1PT5315D

Equipment Class: (20) Instrumentation and Control Panels and Cabinets

Equipment Description: CONTAINMENT PRESSURE TO CIS



1PT5315D 8-7-12 005



1PT5315D 8-7-12 006

**ATTACHMENT 3**  
**WALKDOWN CHECKLISTS**

---

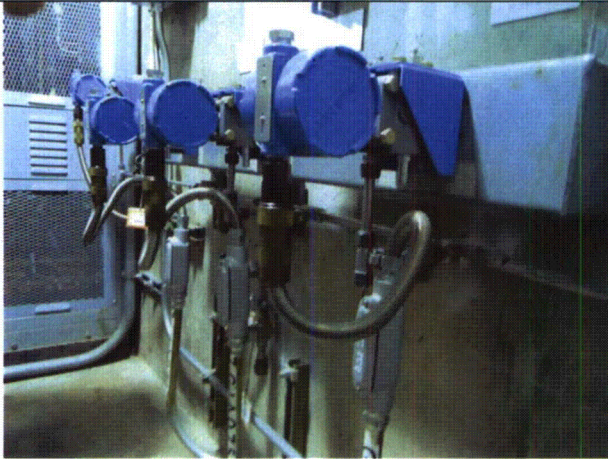
Status: Y  N  U

**Seismic Walkdown Checklist (SWC)**

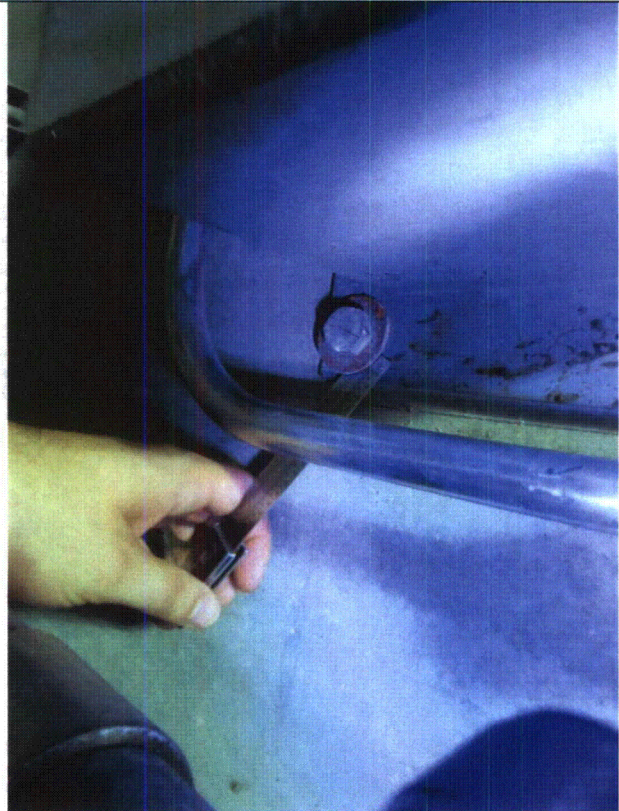
Equipment ID No.: 1PT5315D

Equipment Class: (20) Instrumentation and Control Panels and Cabinets

Equipment Description: CONTAINMENT PRESSURE TO CIS



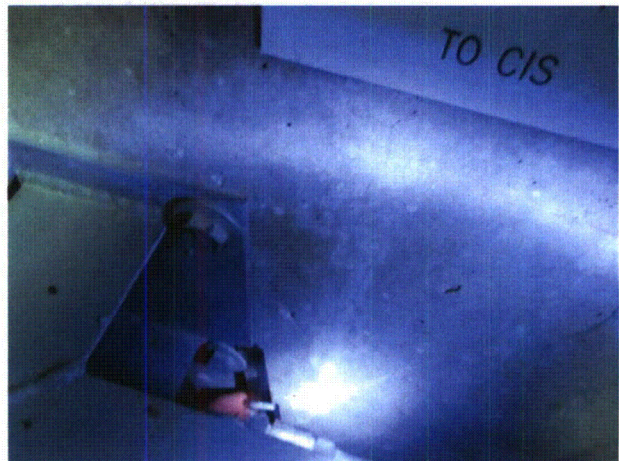
1PT5315D 8-7-12 008



1PT5315D 8-7-12 009



1PT5315D 8-7-12 010



1PT5315D 8-7-12 011

# ATTACHMENT 3

## WALKDOWN CHECKLISTS

---

Status:  Y  N  U

### Seismic Walkdown Checklist (SWC)

Equipment ID No.: 1PUMPAFWMD13

Equipment Class: (5) Horizontal Pumps

Equipment Description: 13 AUX FW MTR DRIVEN PP

Project: CCNPP 1 SWEL

Location (Bldg, Elev, Room/Area): AUX, 5.00 ft, CAL-AB-226

Manufacturer/Model: \_\_\_\_\_

### Instructions for Completing Checklist

This checklist may be used to document the results of the Seismic Walkdown of an item of equipment on the SWEL. The space below each of the following questions may be used to record the results of judgments and findings. Additional space is provided at the end of this checklist for documenting other comments.

---

### Anchorage

- |    |   |                |
|----|---|----------------|
| 1. | Is anchorage configuration verification required (i.e., is the item one of the 50% of SWEL items requiring such verification)?  | No             |
| 2. | Is the anchorage free of bent, broken, missing or loose hardware?   | Yes            |
| 3. | Is the anchorage free of corrosion that is more than mild surface oxidation?  | Yes            |
| 4. | Is the anchorage free of visible cracks in the concrete near the anchors?   | Yes            |
| 5. | Is the anchorage configuration consistent with plant documentation? (Note: This question only applies if the item is one of the 50% for which an anchorage configuration verification is required.) | Not Applicable |
| 6. | Based on the above anchorage evaluations, is the anchorage free of potentially adverse seismic conditions?  | Yes            |

---

### Interaction Effects

**ATTACHMENT 3**  
**WALKDOWN CHECKLISTS**

---

Status:  Y  N  U

**Seismic Walkdown Checklist (SWC)**

Equipment ID No.: 1PUMPAFWMD13

Equipment Class: (5) Horizontal Pumps

Equipment Description: 13 AUX FW MTR DRIVEN PP

---

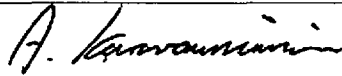
7. Are soft targets free from impact by nearby equipment or structures? Yes
8. Are overhead equipment, distribution systems, ceiling tiles and lighting, and masonry block walls not likely to collapse onto the equipment? Yes
9. Do attached lines have adequate flexibility to avoid damage? Yes
- Electrical wiring uses flex conduit having adequate flexibility, therefore no seismic concern.*
- The is 1/2" tubing that is supported from a pipe support above pump. The tubing spans 8" between small bore piping and its support. The differential motion between the pump that is supported on the floor and floor above is judged not to adversely effect the tube, therefore not a seismic concern.*
10. Based on the above seismic interaction evaluations, is equipment free of potentially adverse seismic interaction effects? Yes
- 

**Other Adverse Conditions**

11. Have you looked for and found no adverse seismic conditions that could adversely affect the safety functions of the equipment? Yes
- 

**Comments**

Evaluated by:



A. Karavoussianis

Date: 11/09/2012



C. Figliolini

11/09/2012

---



**ATTACHMENT 3**  
**WALKDOWN CHECKLISTS**

---

Status:  Y  N  U

**Seismic Walkdown Checklist (SWC)**

Equipment ID No.: 1PUMPAFWMD13

Equipment Class: (5) Horizontal Pumps

Equipment Description: 13 AUX FW MTR DRIVEN PP

---

**Photos**



1PUMPAFWMD13 8-16-12 059



1PUMPAFWMD13 8-16-12 060

---

**ATTACHMENT 3**  
**WALKDOWN CHECKLISTS**

---

Status:  Y  N  U

**Seismic Walkdown Checklist (SWC)**

Equipment ID No.: 1PUMPAFWMD13

Equipment Class: (5) Horizontal Pumps

Equipment Description: 13 AUX FW MTR DRIVEN PP



1PUMPAFWMD13 8-16-12 061



1PUMPAFWMD13 8-16-12 062

# ATTACHMENT 3

## WALKDOWN CHECKLISTS

---

Status:  Y  N  U

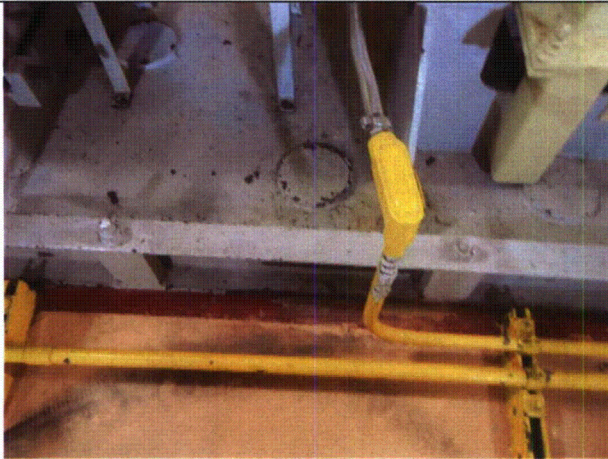
### Seismic Walkdown Checklist (SWC)

Equipment ID No.: 1PUMPAFWMD13

Equipment Class: (5) Horizontal Pumps

Equipment Description: 13 AUX FW MTR DRIVEN PP

---



1PUMPAFWMD13 8-16-12 063



1PUMPAFWMD13 8-16-12 064

---

**ATTACHMENT 3**  
**WALKDOWN CHECKLISTS**

---

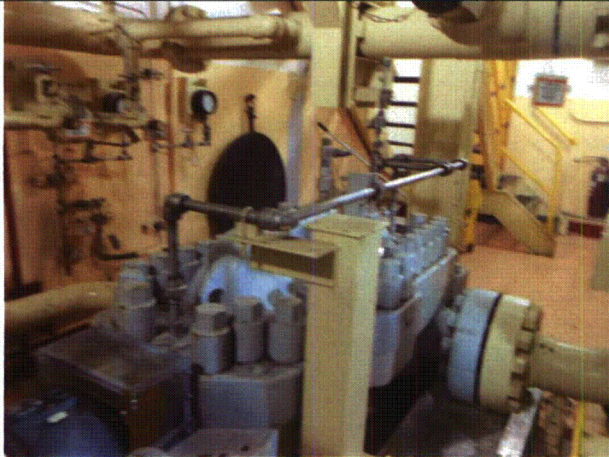
Status:  Y  N  U

**Seismic Walkdown Checklist (SWC)**

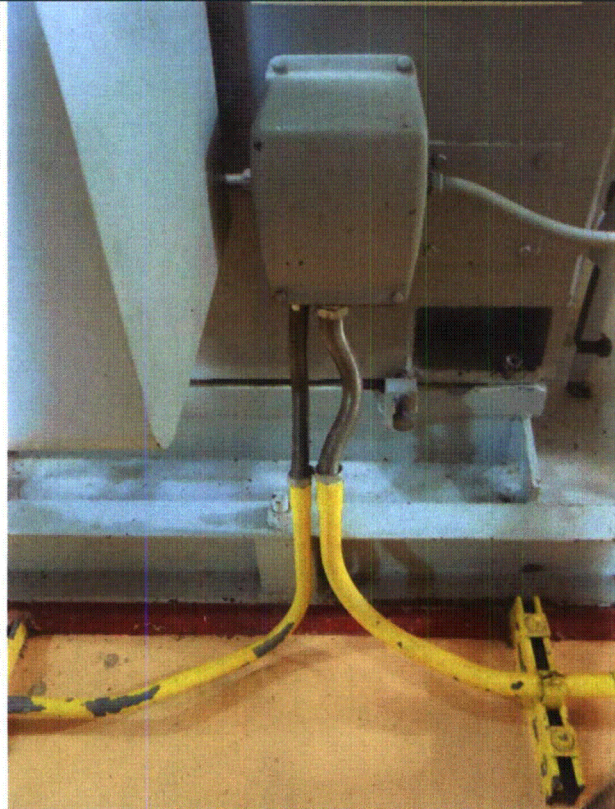
Equipment ID No.: 1PUMPAFWMD13

Equipment Class: (5) Horizontal Pumps

Equipment Description: 13 AUX FW MTR DRIVEN PP



1PUMPAFWMD13 8-16-12 066



1PUMPAFWMD13 8-16-12 067

# ATTACHMENT 3

## WALKDOWN CHECKLISTS

---

Status:  Y  N  U

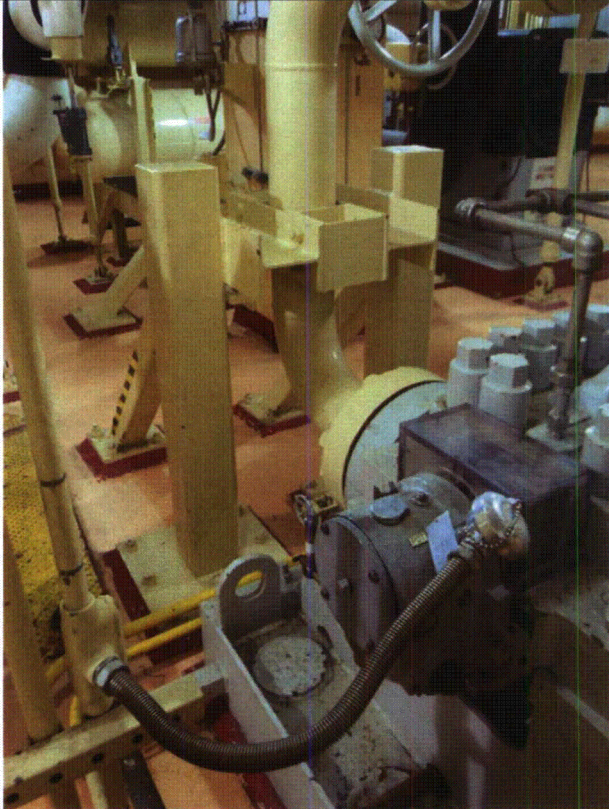
### Seismic Walkdown Checklist (SWC)

Equipment ID No.: 1PUMPAFWMD13

Equipment Class: (5) Horizontal Pumps

Equipment Description: 13 AUX FW MTR DRIVEN PP

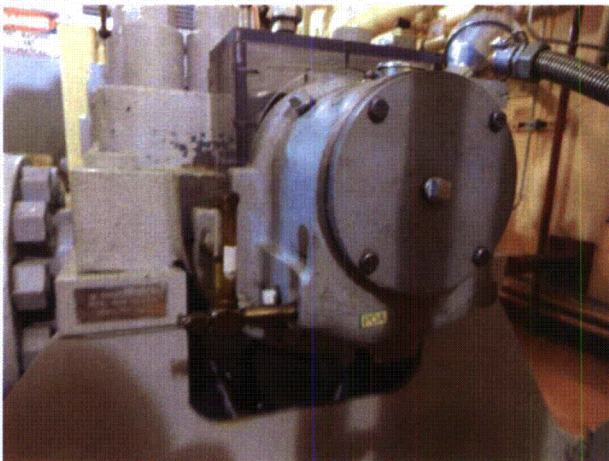
---



1PUMPAFWMD13 8-16-12 068



1PUMPAFWMD13 8-16-12 069



1PUMPAFWMD13 8-16-12 070

---

**ATTACHMENT 3**  
**WALKDOWN CHECKLISTS**

---

Status:  Y  N  U

**Seismic Walkdown Checklist (SWC)**

Equipment ID No.: 1PUMPAFWTD11

Equipment Class: (5) Horizontal Pumps

Equipment Description: AUX FEED PUMP 11

Project: CCNPP 1 SWEL

Location (Bldg, Elev, Room/Area): TURB, 12.00 ft, CAL-AFWPR-603

Manufacturer/Model: \_\_\_\_\_

**Instructions for Completing Checklist**

This checklist may be used to document the results of the Seismic Walkdown of an item of equipment on the SWEL. The space below each of the following questions may be used to record the results of judgments and findings. Additional space is provided at the end of this checklist for documenting other comments.

**Anchorage**

1. Is anchorage configuration verification required (i.e., is the item one of the 50% of SWEL items requiring such verification)? No
  
2. Is the anchorage free of bent, broken, missing or loose hardware? Yes
  
3. Is the anchorage free of corrosion that is more than mild surface oxidation? Yes
  
4. Is the anchorage free of visible cracks in the concrete near the anchors? Yes
  
5. Is the anchorage configuration consistent with plant documentation? (Note: This question only applies if the item is one of the 50% for which an anchorage configuration verification is required.) Not Applicable
  
6. Based on the above anchorage evaluations, is the anchorage free of potentially adverse seismic conditions? Yes

---

**Interaction Effects**

**ATTACHMENT 3**  
**WALKDOWN CHECKLISTS**

---

Status:  Y  N  U

**Seismic Walkdown Checklist (SWC)**

Equipment ID No.: 1PUMPAFWTD11

Equipment Class: (5) Horizontal Pumps

Equipment Description: AUX FEED PUMP 11

---

7. Are soft targets free from impact by nearby equipment or structures? Yes
8. Are overhead equipment, distribution systems, ceiling tiles and lighting, and masonry block walls not likely to collapse onto the equipment? Yes  
*Need to determine if overhead light mounting is seismically adequate.  
10/3/12 - Overhead lights were deemed not a credible seismic concern due to their lightweight and to typical construction practices. Also, they have been previously evaluated by CCNPP and found seismically acceptable.*
9. Do attached lines have adequate flexibility to avoid damage? Yes  
*Lines attached to equipment consist of flex conduit and flexible tubing, both having adequate flexibility, therefore no seismic concern.*
10. Based on the above seismic interaction evaluations, is equipment free of potentially adverse seismic interaction effects? Yes
- 

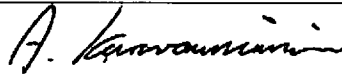
**Other Adverse Conditions**

11. Have you looked for and found no adverse seismic conditions that could adversely affect the safety functions of the equipment? Yes
- 

**Comments**

---

Evaluated by:



A. Karavoussianis

Date: 11/09/2012



C. Figliolini

11/09/2012

---

**Photos**

---

# ATTACHMENT 3

## WALKDOWN CHECKLISTS

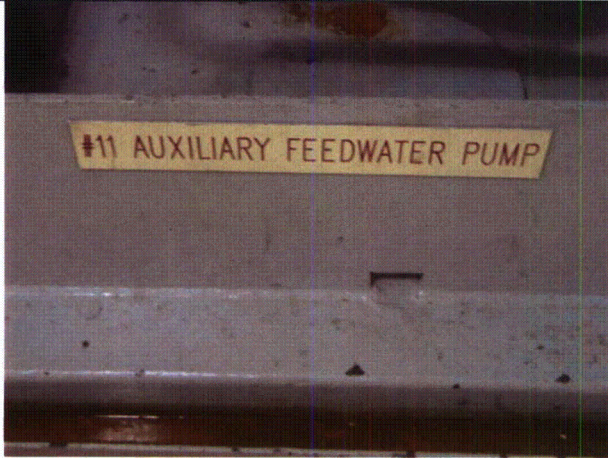
Status:  Y  N  U

### Seismic Walkdown Checklist (SWC)

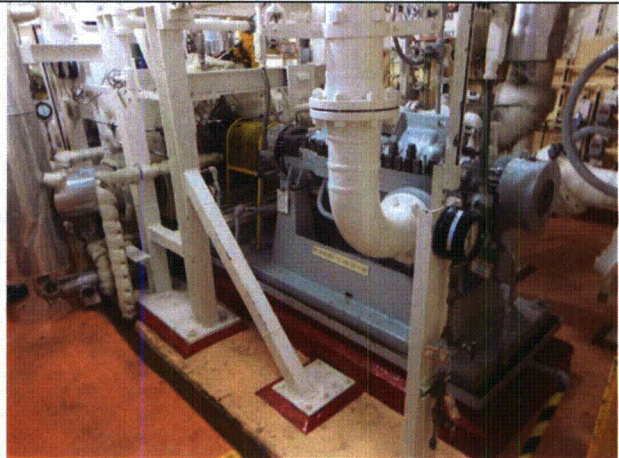
Equipment ID No.: 1PUMPAFWTD11

Equipment Class: (5) Horizontal Pumps

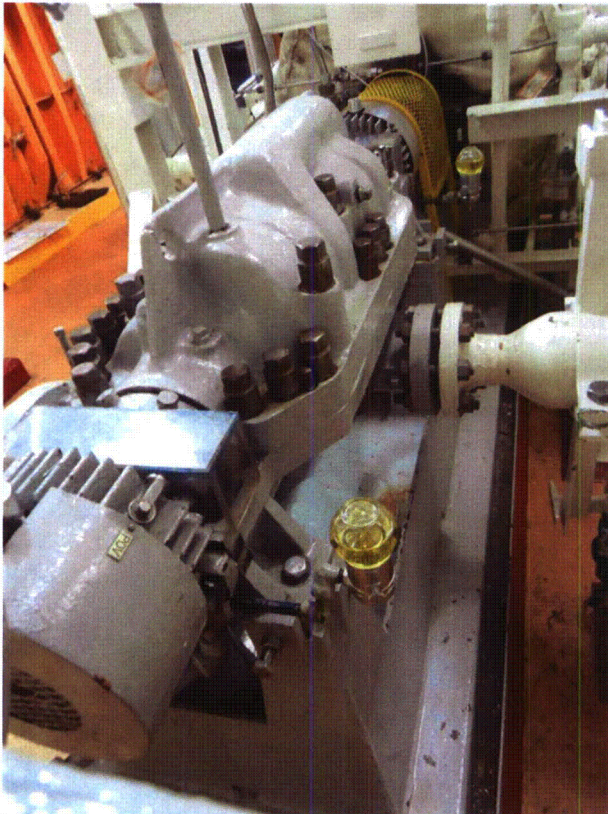
Equipment Description: AUX FEED PUMP 11



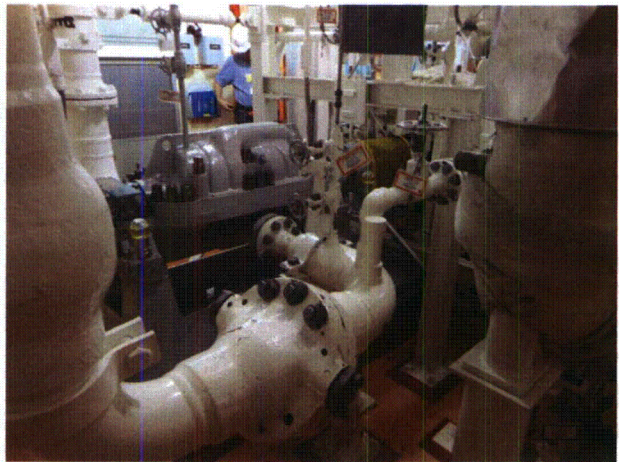
1PUMPAFWTD11 8-10-12 015



1PUMPAFWTD11 8-10-12 016



1PUMPAFWTD11 8-10-12 017



1PUMPAFWTD11 8-10-12 018



# ATTACHMENT 3

## WALKDOWN CHECKLISTS

Status:  Y  N  U

### Seismic Walkdown Checklist (SWC)

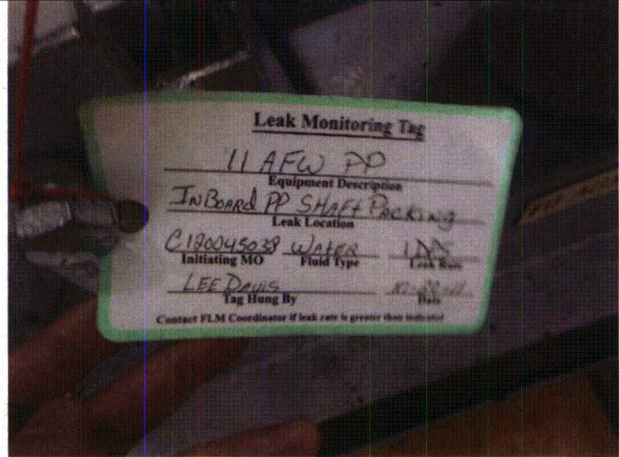
Equipment ID No.: 1PUMPAFWTD11

Equipment Class: (5) Horizontal Pumps

Equipment Description: AUX FEED PUMP 11



1PUMPAFWTD11 8-10-12 019



1PUMPAFWTD11 8-10-12 020

**ATTACHMENT 3**  
**WALKDOWN CHECKLISTS**

---

Status:  Y  N  U

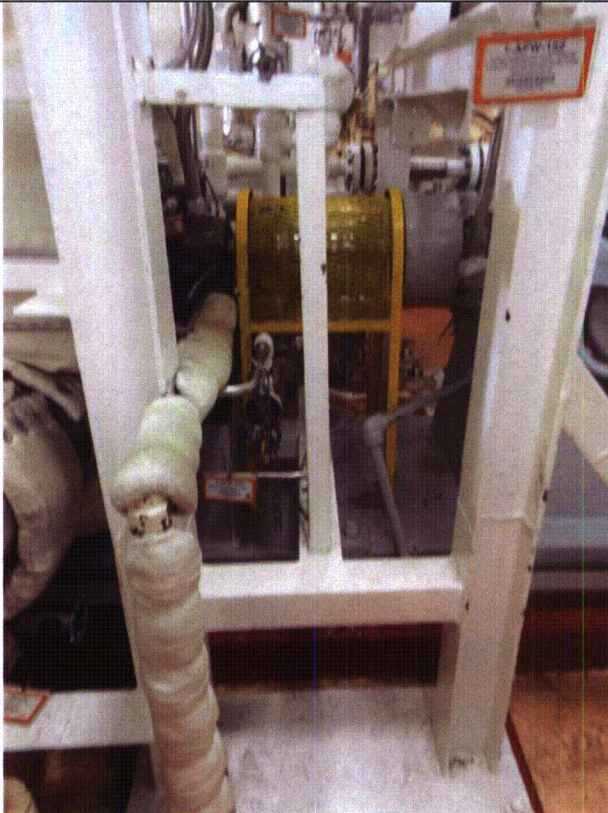
**Seismic Walkdown Checklist (SWC)**

Equipment ID No.: 1PUMPAFWTD11

Equipment Class: (5) Horizontal Pumps

Equipment Description: AUX FEED PUMP 11

---



1PUMPAFWTD11 8-10-12 021



1PUMPAFWTD11 8-10-12 022

---

# ATTACHMENT 3

## WALKDOWN CHECKLISTS

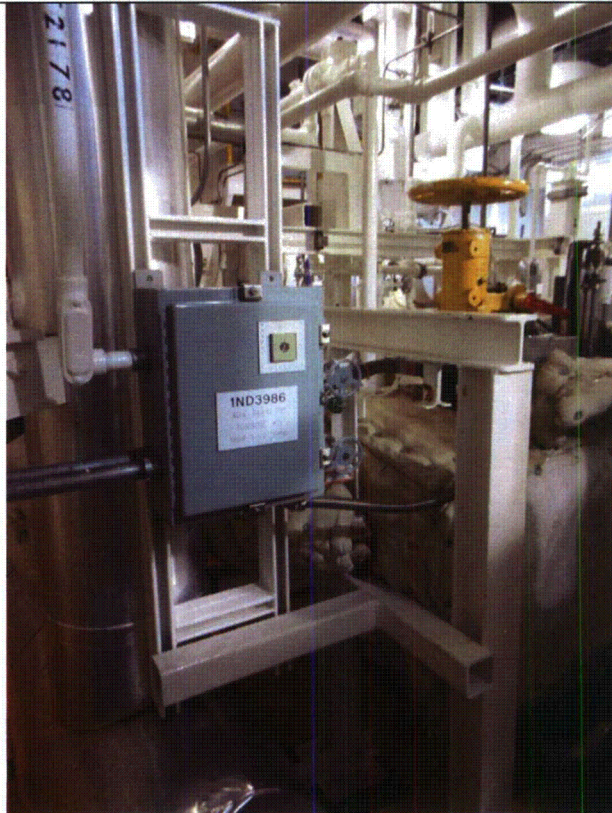
Status:  Y  N  U

### Seismic Walkdown Checklist (SWC)

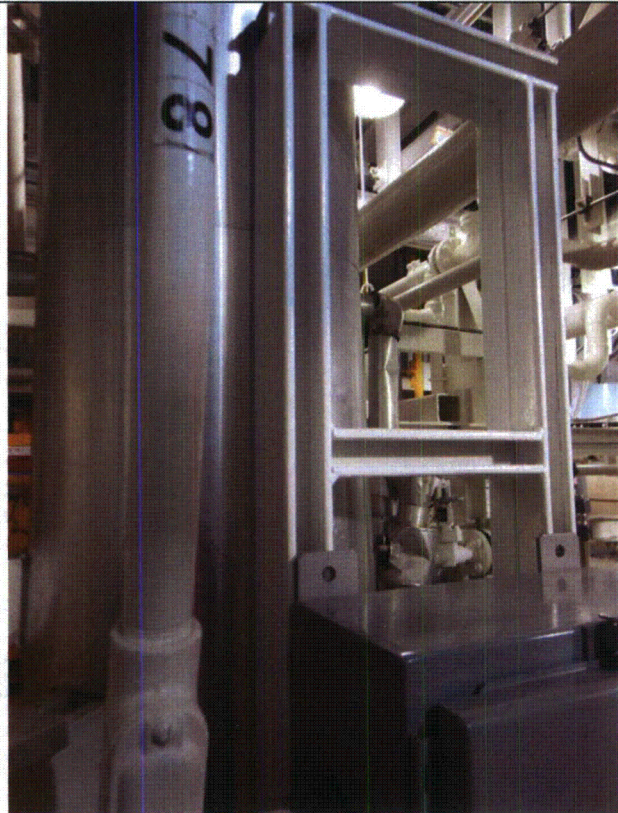
Equipment ID No.: 1PUMPAFWTD11

Equipment Class: (5) Horizontal Pumps

Equipment Description: AUX FEED PUMP 11



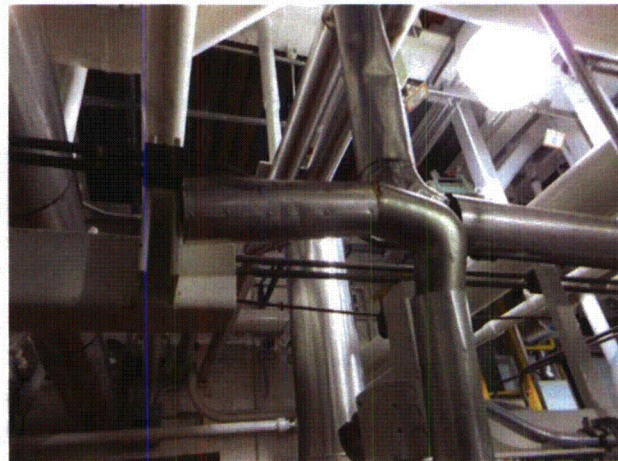
1PUMPAFWTD11 8-10-12 023



1PUMPAFWTD11 8-10-12 024



1PUMPAFWTD11 8-10-12 025



1PUMPAFWTD11 8-10-12 026

# ATTACHMENT 3

## WALKDOWN CHECKLISTS

---

Status:  Y  N  U

### Seismic Walkdown Checklist (SWC)

Equipment ID No.: 1PUMPAFWTD12

Equipment Class: (5) Horizontal Pumps

Equipment Description: AUX FEED PUMP 12

Project: CCNPP 1 SWEL

Location (Bldg, Elev, Room/Area): TURB, 12.00 ft, CAL-AFWPR-603

Manufacturer/Model: \_\_\_\_\_

### Instructions for Completing Checklist

This checklist may be used to document the results of the Seismic Walkdown of an item of equipment on the SWEL. The space below each of the following questions may be used to record the results of judgments and findings. Additional space is provided at the end of this checklist for documenting other comments.

---

### Anchorage

1. Is anchorage configuration verification required (i.e., is the item one of the 50% of SWEL items requiring such verification)? Yes
  
2. Is the anchorage free of bent, broken, missing or loose hardware? Yes
  
3. Is the anchorage free of corrosion that is more than mild surface oxidation? Yes
  
4. Is the anchorage free of visible cracks in the concrete near the anchors? Yes
  
5. Is the anchorage configuration consistent with plant documentation? (Note: This question only applies if the item is one of the 50% for which an anchorage configuration verification is required.) Yes  
*Anchorage is consistent with drawings 60207, 61595 and 61624.*
  
6. Based on the above anchorage evaluations, is the anchorage free of potentially adverse seismic conditions? Yes

---

### Interaction Effects

**ATTACHMENT 3  
WALKDOWN CHECKLISTS**

---

Status:  Y  N  U

**Seismic Walkdown Checklist (SWC)**

Equipment ID No.: 1PUMPAFWTD12

Equipment Class: (5) Horizontal Pumps

Equipment Description: AUX FEED PUMP 12

---

7. Are soft targets free from impact by nearby equipment or structures? Yes
8. Are overhead equipment, distribution systems, ceiling tiles and lighting, and masonry block walls not likely to collapse onto the equipment? Yes  
*Overhead light, if not 2/1, may strike sensitive equipment.  
10/3/12 - Overhead lights were deemed not a credible seismic concern due to their lightweight and to typical construction practices. Also, they have been previously evaluated by CCNPP and found seismically acceptable.*
9. Do attached lines have adequate flexibility to avoid damage? Yes  
*Lines attached to equipment consist of flex conduit and flexible tubing, both having adequate flexibility, therefore no seismic concern.*
10. Based on the above seismic interaction evaluations, is equipment free of potentially adverse seismic interaction effects? Yes
- 

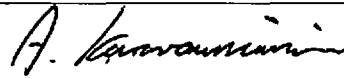
**Other Adverse Conditions**

11. Have you looked for and found no adverse seismic conditions that could adversely affect the safety functions of the equipment? Yes
- 

**Comments**

---

Evaluated by:



A. Karavoussianis

Date: 11/09/2012

---



C. Figliolini

11/09/2012

---

**Photos**

---

# ATTACHMENT 3

## WALKDOWN CHECKLISTS

---

Status:  Y  N  U

### Seismic Walkdown Checklist (SWC)

Equipment ID No.: 1PUMPAFWTD12

Equipment Class: (5) Horizontal Pumps

Equipment Description: AUX FEED PUMP 12

---



1PUMPAFWTD12 8-10-12 003



1PUMPAFWTD12 8-10-12 004

---

**ATTACHMENT 3**  
**WALKDOWN CHECKLISTS**

---

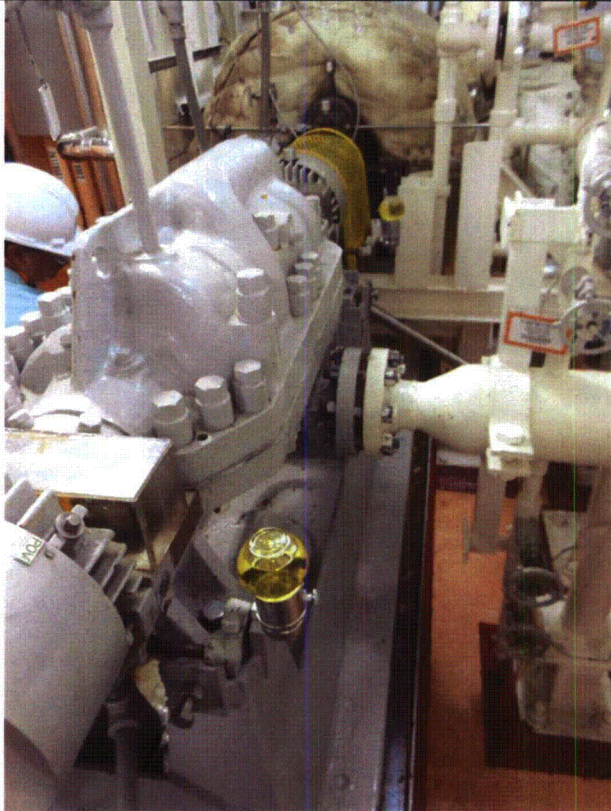
Status:  Y  N  U

**Seismic Walkdown Checklist (SWC)**

Equipment ID No.: 1PUMPAFWTD12

Equipment Class: (5) Horizontal Pumps

Equipment Description: AUX FEED PUMP 12



1PUMPAFWTD12 8-10-12 005



1PUMPAFWTD12 8-10-12 006

**ATTACHMENT 3**  
**WALKDOWN CHECKLISTS**

---

Status:  Y  N  U

**Seismic Walkdown Checklist (SWC)**

Equipment ID No.: 1PUMPAFWTD12

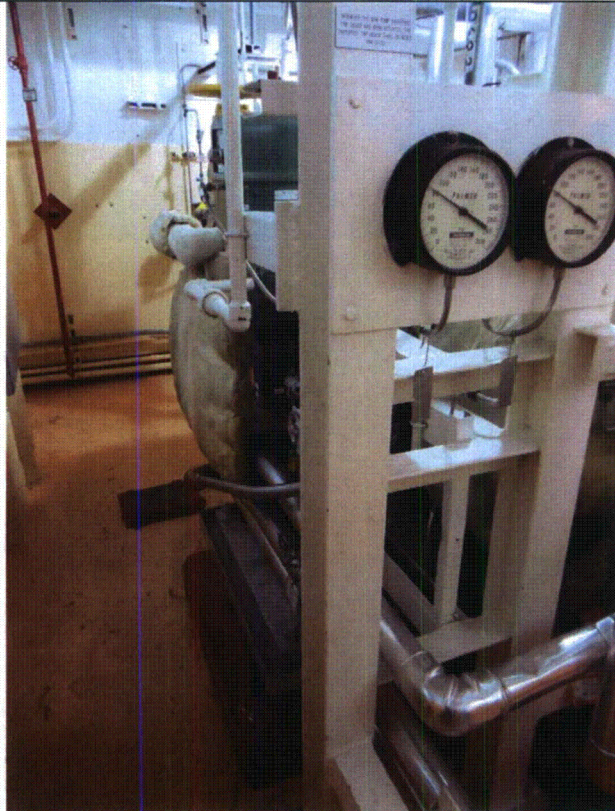
Equipment Class: (5) Horizontal Pumps

Equipment Description: AUX FEED PUMP 12

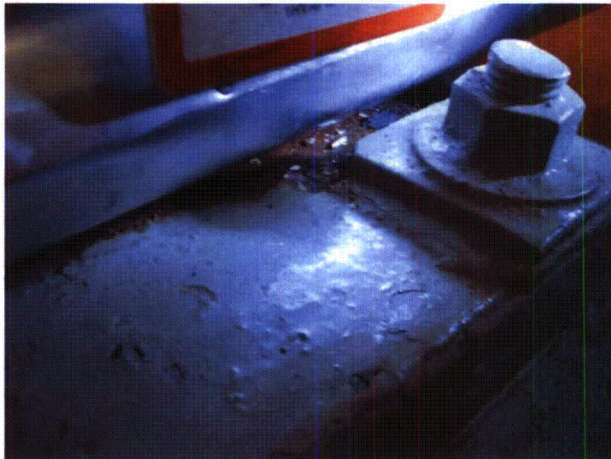
---



1PUMPAFWTD12 8-10-12 007



1PUMPAFWTD12 8-10-12 008



1PUMPAFWTD12 8-10-12 009



1PUMPAFWTD12 8-10-12 010

---



# ATTACHMENT 3

## WALKDOWN CHECKLISTS

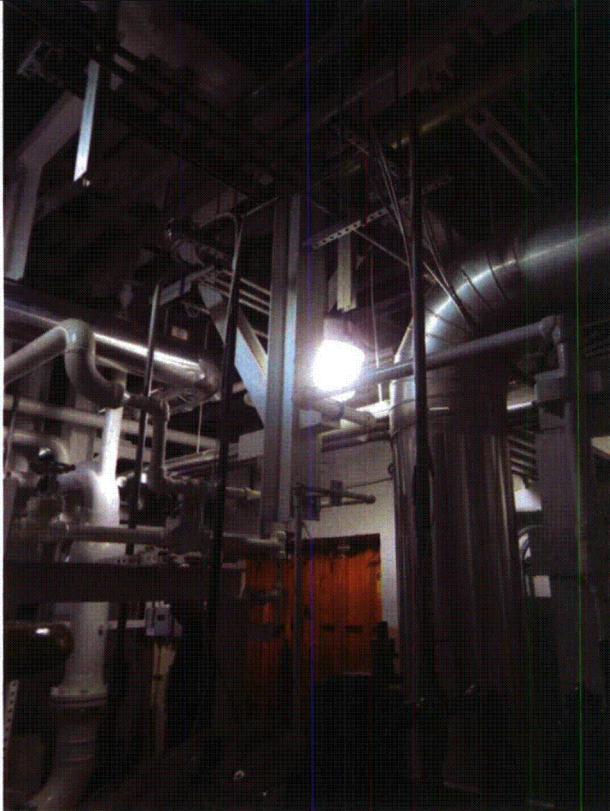
Status:  Y  N  U

### Seismic Walkdown Checklist (SWC)

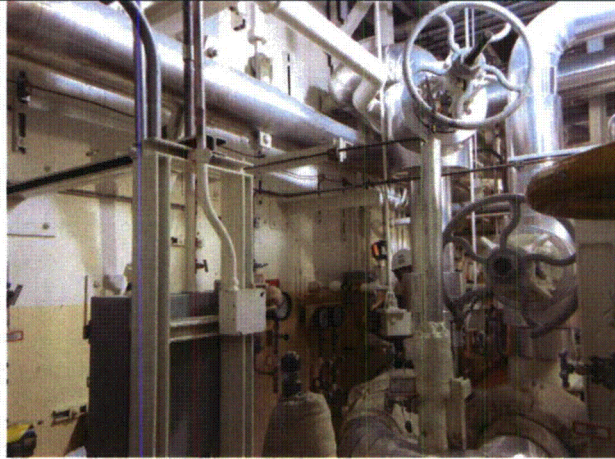
Equipment ID No.: 1PUMPAFWTD12

Equipment Class: (5) Horizontal Pumps

Equipment Description: AUX FEED PUMP 12



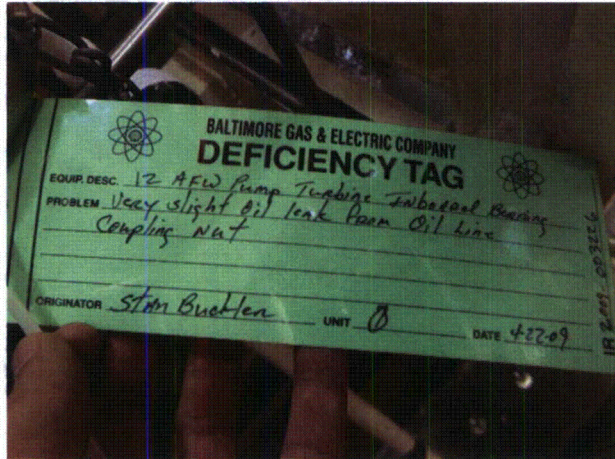
1PUMPAFWTD12 8-10-12 011



1PUMPAFWTD12 8-10-12 012



1PUMPAFWTD12 8-10-12 013



1PUMPAFWTD12 8-10-12 014

# ATTACHMENT 3

## WALKDOWN CHECKLISTS

---

Status:  Y  N  U

### Seismic Walkdown Checklist (SWC)

Equipment ID No.: 1PUMPCC12

Equipment Class: (5) Horizontal Pumps

Equipment Description: 12 COMPONENT COOLING PUMP

Project: CCNPP 1 SWEL

Location (Bldg, Elev, Room/Area): AUX, 5.00 ft, CAL-AB-228

Manufacturer/Model: \_\_\_\_\_

### Instructions for Completing Checklist

This checklist may be used to document the results of the Seismic Walkdown of an item of equipment on the SWEL. The space below each of the following questions may be used to record the results of judgments and findings. Additional space is provided at the end of this checklist for documenting other comments.

### Anchorage

1. Is anchorage configuration verification required (i.e., is the item one of the 50% of SWEL items requiring such verification)? Yes
  
2. Is the anchorage free of bent, broken, missing or loose hardware? Yes
  
3. Is the anchorage free of corrosion that is more than mild surface oxidation? Yes
  
4. Is the anchorage free of visible cracks in the concrete near the anchors? Yes
  
5. Is the anchorage configuration consistent with plant documentation? (Note: This question only applies if the item is one of the 50% for which an anchorage configuration verification is required.) Yes  
*Anchorage is consistent with drawings FSK-C-92 and FSK-C-184.*
  
6. Based on the above anchorage evaluations, is the anchorage free of potentially adverse seismic conditions? Yes

---

### Interaction Effects

**ATTACHMENT 3**  
**WALKDOWN CHECKLISTS**

---

Status:  Y  N  U

**Seismic Walkdown Checklist (SWC)**

Equipment ID No.: 1PUMPCC12

Equipment Class: (5) Horizontal Pumps

Equipment Description: 12 COMPONENT COOLING PUMP

---

7. Are soft targets free from impact by nearby equipment or structures? Yes

*Block wall shielding adjacent to pump is judged well supported and therefore seismically adequate.*

8. Are overhead equipment, distribution systems, ceiling tiles and lighting, and masonry block walls not likely to collapse onto the equipment? Yes

9. Do attached lines have adequate flexibility to avoid damage? Yes

10. Based on the above seismic interaction evaluations, is equipment free of potentially adverse seismic interaction effects? Yes

---

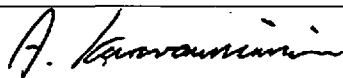
**Other Adverse Conditions**

11. Have you looked for and found no adverse seismic conditions that could adversely affect the safety functions of the equipment? Yes

---

**Comments**

Evaluated by:



A. Karavoussianis

Date: 11/09/2012



C. Figliolini

11/09/2012

---

**Photos**

# ATTACHMENT 3

## WALKDOWN CHECKLISTS

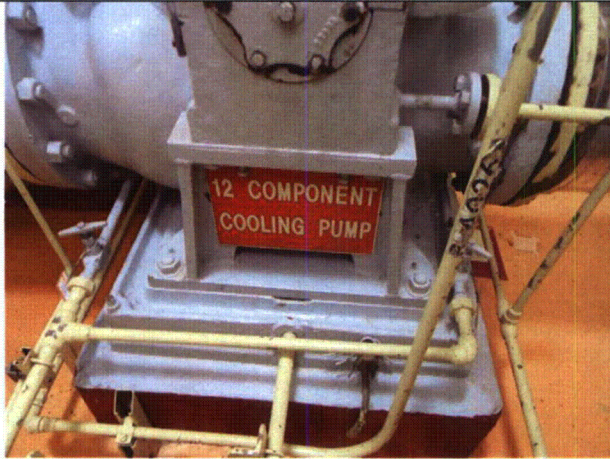
Status:  Y  N  U

### Seismic Walkdown Checklist (SWC)

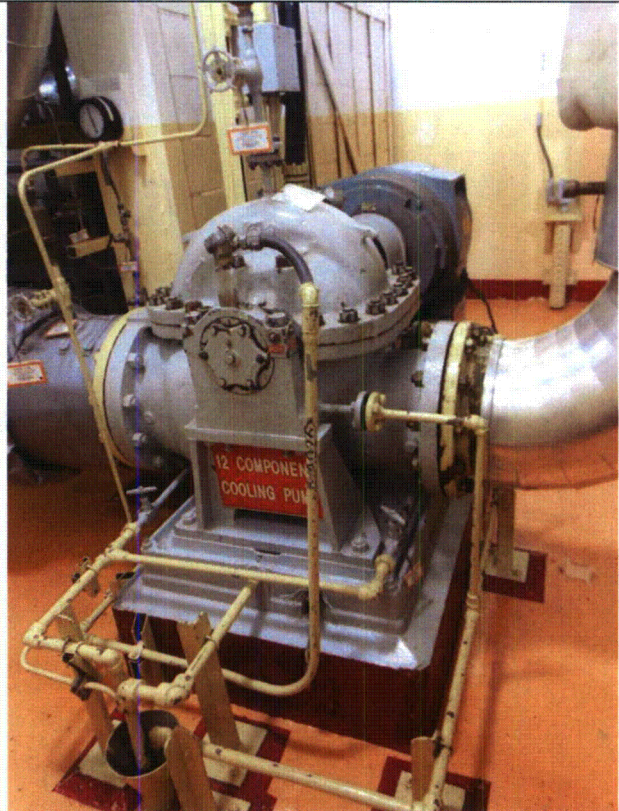
Equipment ID No.: 1PUMPCC12

Equipment Class: (5) Horizontal Pumps

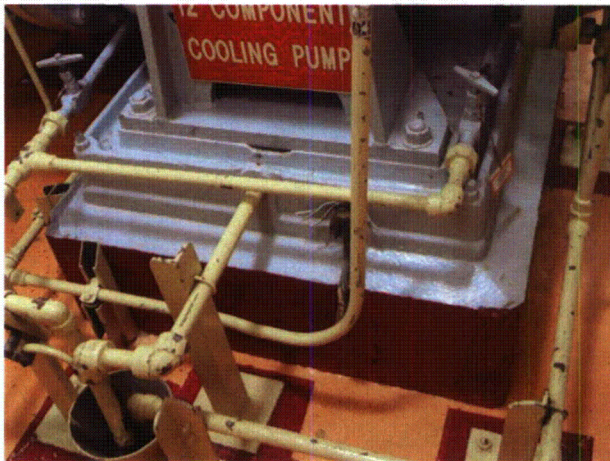
Equipment Description: 12 COMPONENT COOLING PUMP



1PUMPCC12 8-7-12 179



1PUMPCC12 8-7-12 180



1PUMPCC12 8-7-12 181



1PUMPCC12 8-7-12 182

**ATTACHMENT 3**  
**WALKDOWN CHECKLISTS**

---

Status:  Y  N  U

**Seismic Walkdown Checklist (SWC)**

Equipment ID No.: 1PUMPCC12

Equipment Class: (5) Horizontal Pumps

Equipment Description: 12 COMPONENT COOLING PUMP



1PUMPCC12 8-7-12 183



1PUMPCC12 8-7-12 184

# ATTACHMENT 3

## WALKDOWN CHECKLISTS

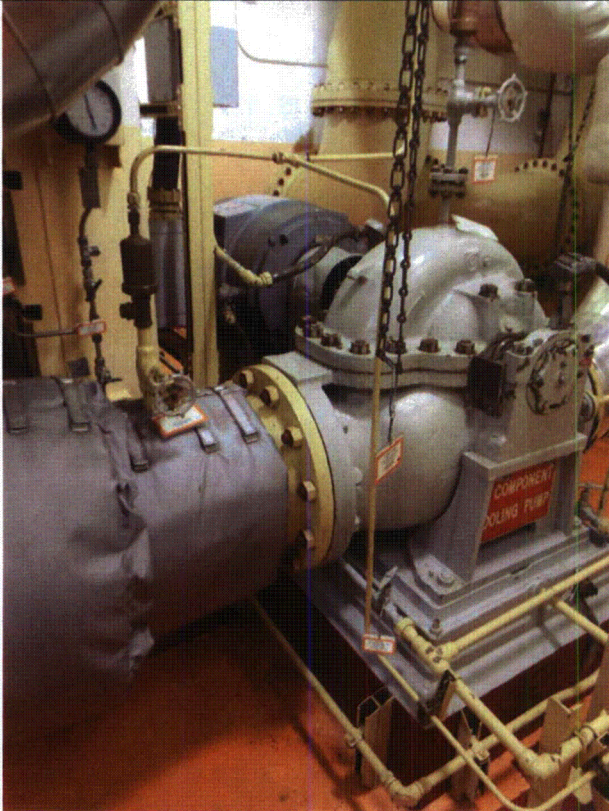
Status:  Y  N  U

### Seismic Walkdown Checklist (SWC)

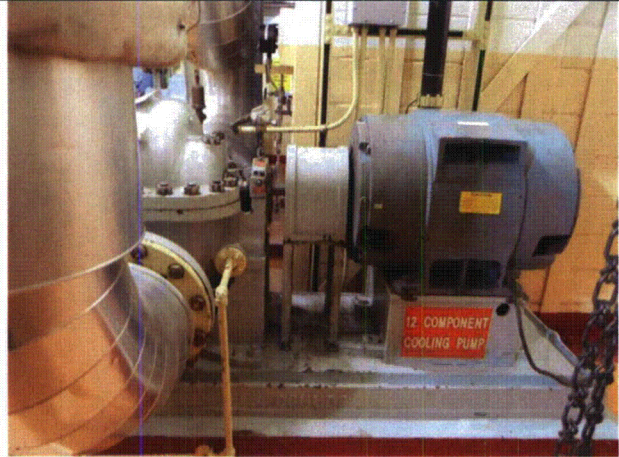
Equipment ID No.: 1PUMPCC12

Equipment Class: (5) Horizontal Pumps

Equipment Description: 12 COMPONENT COOLING PUMP



1PUMPCC12 8-7-12 185



1PUMPCC12 8-7-12 186

**ATTACHMENT 3**  
**WALKDOWN CHECKLISTS**

---

Status:  Y  N  U

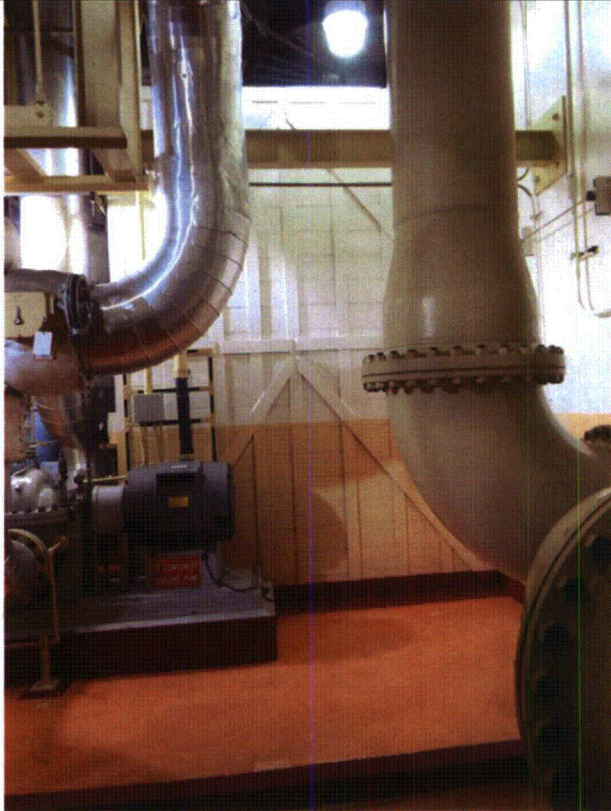
**Seismic Walkdown Checklist (SWC)**

Equipment ID No.: 1PUMPCC12

Equipment Class: (5) Horizontal Pumps

Equipment Description: 12 COMPONENT COOLING PUMP

---



1PUMPCC12 8-7-12 187

---