

Status: Y N U

Seismic Walkdown Checklist (SWC)

Equipment ID No.: D03-2253-0084

Equipment Class: (18) Instruments on Racks

Equipment Description: INSTRUMENT RACKS/ Instrument Rack 2253-84

Project: Dresden 3 SWEL

Location (Bldg, Elev, Room/Area): Reactor, 545.50 ft, ALL

Manufacturer/Model:

Instructions for Completing Checklist

This checklist may be used to document the results of the Seismic Walkdown of an item of equipment on the SWEL. The space below each of the following questions may be used to record the results of judgments and findings. Additional space is provided at the end of this checklist for documenting other comments.

Anchorage

1. Is anchorage configuration verification required (i.e., is the item one of the 50% of SWEL items requiring such verification)? Yes

2. Is the anchorage free of bent, broken, missing or loose hardware? Yes

3. Is the anchorage free of corrosion that is more than mild surface oxidation? Yes

4. Is the anchorage free of visible cracks in the concrete near the anchors? Yes

5. Is the anchorage configuration consistent with plant documentation? (Note: This question only applies if the item is one of the 50% for which an anchorage configuration verification is required.) Yes

6. Based on the above anchorage evaluations, is the anchorage free of potentially adverse seismic conditions? Yes

Status: Y N U

Seismic Walkdown Checklist (SWC)

Equipment ID No.: D03-2253-0084

Equipment Class: (18) Instruments on Racks

Equipment Description: INSTRUMENT RACKS/ Instrument Rack 2253-84

Interaction Effects

7. Are soft targets free from impact by nearby equipment or structures? Yes
8. Are overhead equipment, distribution systems, ceiling tiles and lighting, and masonry block walls not likely to collapse onto the equipment? Yes
Overhead light fixtures are judged to be acceptable.
9. Do attached lines have adequate flexibility to avoid damage? Yes
10. Based on the above seismic interaction evaluations, is equipment free of potentially adverse seismic interaction effects? Yes

Other Adverse Conditions

11. Have you looked for and found no adverse seismic conditions that could adversely affect the safety functions of the equipment? Yes

Comments

SEWS Anchorage Notes:

Distribution Panel cantilevered from floor on two legs each. Each leg is welded to a base plate that is anchored to the floor with four 1/2" diameter expansion bolts.

Seismic Walkdown Team: J. Griffith & M. Wodarcyk - 8/2/2012

Evaluated by:

James D. Griffith James Griffith

Date: 9/30/2012

Michael J. Wodarcyk

Michael Wodarcyk

9/30/2012

Status: Y N U

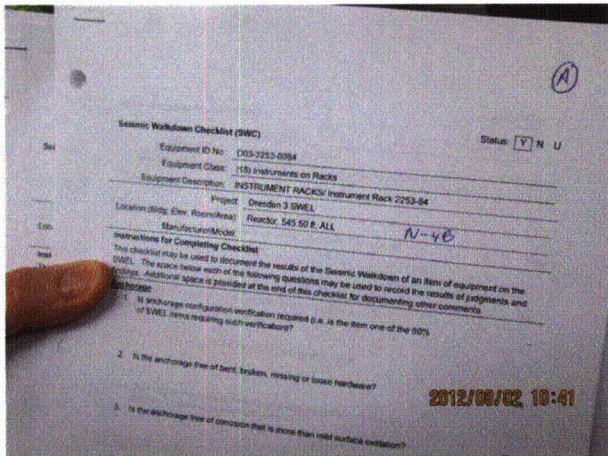
Seismic Walkdown Checklist (SWC)

Equipment ID No.: D03-2253-0084

Equipment Class: (18) Instruments on Racks

Equipment Description: INSTRUMENT RACKS/ Instrument Rack 2253-84

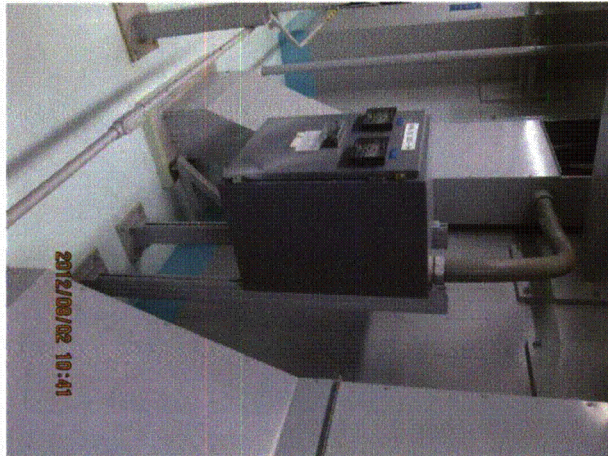
Photos



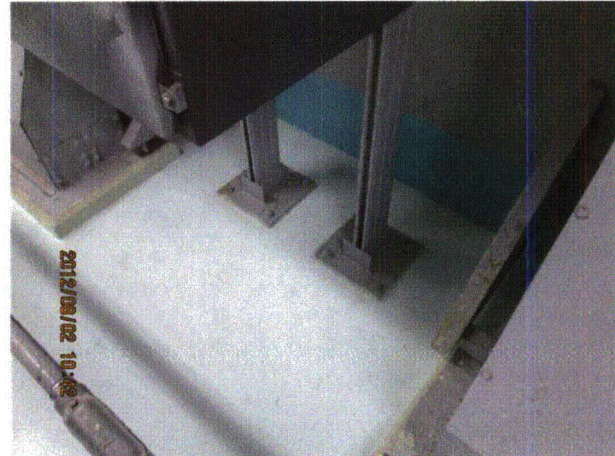
20120802-Dresden-3 117



20120802-Dresden-3 118



20120802-Dresden-3 119



20120802-Dresden-3 120

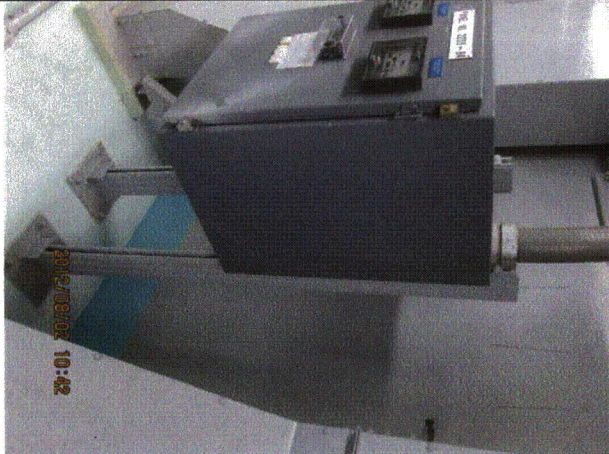
Status: Y N U

Seismic Walkdown Checklist (SWC)

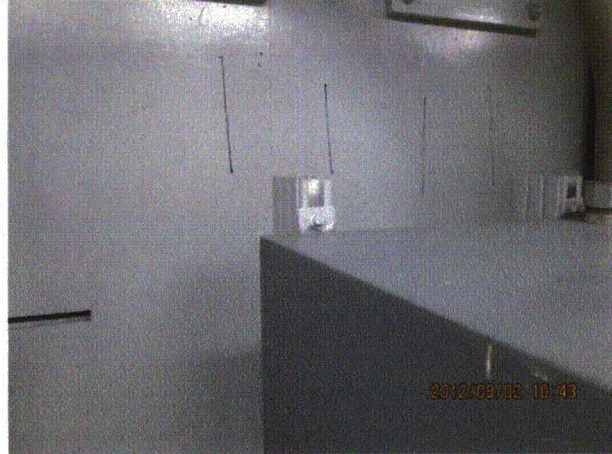
Equipment ID No.: D03-2253-0084

Equipment Class: (18) Instruments on Racks

Equipment Description: INSTRUMENT RACKS/ Instrument Rack 2253-84



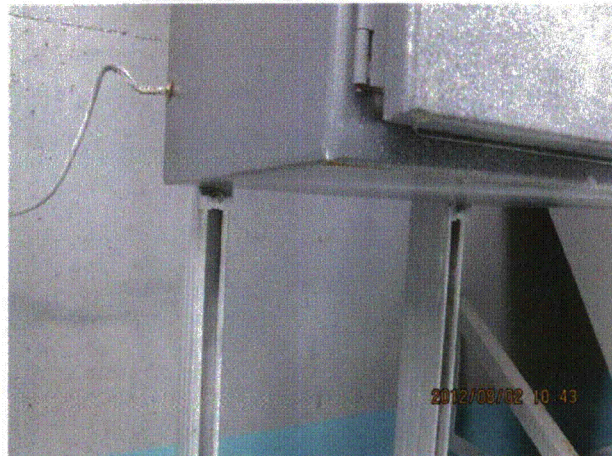
20120802-Dresden-3 121



20120802-Dresden-3 122



20120802-Dresden-3 123



20120802-Dresden-3 124

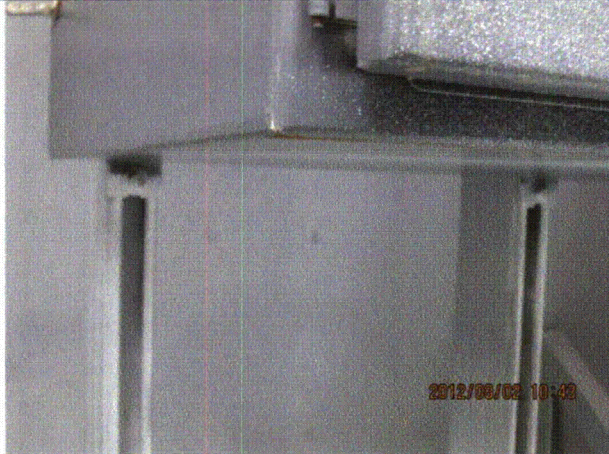
Status: Y N U

Seismic Walkdown Checklist (SWC)

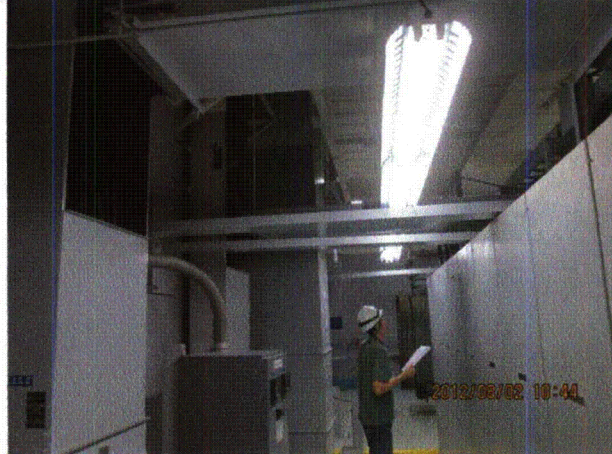
Equipment ID No.: D03-2253-0084

Equipment Class: (18) Instruments on Racks

Equipment Description: INSTRUMENT RACKS/ Instrument Rack 2253-84



20120802-Dresden-3 125



20120802-Dresden-3 126



20120802-Dresden-3 127



20120802-Dresden-3 128

Status: Y N U

Seismic Walkdown Checklist (SWC)

Equipment ID No.: D03-2253-0084

Equipment Class: (18) Instruments on Racks

Equipment Description: INSTRUMENT RACKS/ Instrument Rack 2253-84



20120802-Dresden-3 129



20120802-Dresden-3 130



20120802-Dresden-3 131



20120802-Dresden-3 132

Status: Y N U

Seismic Walkdown Checklist (SWC)

Equipment ID No.: D03-2253-0084

Equipment Class: (18) Instruments on Racks

Equipment Description: INSTRUMENT RACKS/ Instrument Rack 2253-84



20120802-Dresden-3 133

Status: Y N U

Seismic Walkdown Checklist (SWC)

Equipment ID No.: D03-2301-0003-V20

Equipment Class: (8) Motor-Operated and Solenoid-Operated Valves

Equipment Description: HPCI/ Turbine Steam Line Valve

Project: Dresden 3 SWEL

Location (Bldg, Elev, Room/Area): Reactor, 476.50 ft, ALL

Manufacturer/Model:

Instructions for Completing Checklist

This checklist may be used to document the results of the Seismic Walkdown of an item of equipment on the SWEL. The space below each of the following questions may be used to record the results of judgments and findings. Additional space is provided at the end of this checklist for documenting other comments.

Anchorage

1. Is anchorage configuration verification required (i.e., is the item one of the 50% of SWEL items requiring such verification)? No

2. Is the anchorage free of bent, broken, missing or loose hardware? Not Applicable

3. Is the anchorage free of corrosion that is more than mild surface oxidation? Not Applicable

4. Is the anchorage free of visible cracks in the concrete near the anchors? Not Applicable

5. Is the anchorage configuration consistent with plant documentation? (Note: This question only applies if the item is one of the 50% for which an anchorage configuration verification is required.) Not Applicable

6. Based on the above anchorage evaluations, is the anchorage free of potentially adverse seismic conditions? Yes

Status: Y N U

Seismic Walkdown Checklist (SWC)

Equipment ID No.: D03-2301-0003-V20

Equipment Class: (8) Motor-Operated and Solenoid-Operated Valves

Equipment Description: HPCI/ Turbine Steam Line Valve

Interaction Effects

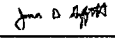

7. Are soft targets free from impact by nearby equipment or structures? Yes
8. Are overhead equipment, distribution systems, ceiling tiles and lighting, and masonry block walls not likely to collapse onto the equipment? Yes
Overhead light fixture with an open S-hook. Fixture has hard-wired cord and will not impact soft targets. Judged to be acceptable. See IR 1396017.
9. Do attached lines have adequate flexibility to avoid damage? Yes
10. Based on the above seismic interaction evaluations, is equipment free of potentially adverse seismic interaction effects? Yes

Other Adverse Conditions

11. Have you looked for and found no adverse seismic conditions that could adversely affect the safety functions of the equipment? Yes

Comments

Seismic Walkdown Team: J. Griffith & M. Wodarczyk - 8/1/2012

Evaluated by:  James Griffith Date: 9/30/2012
 Michael Wodarczyk 9/30/2012

Status: Y N U

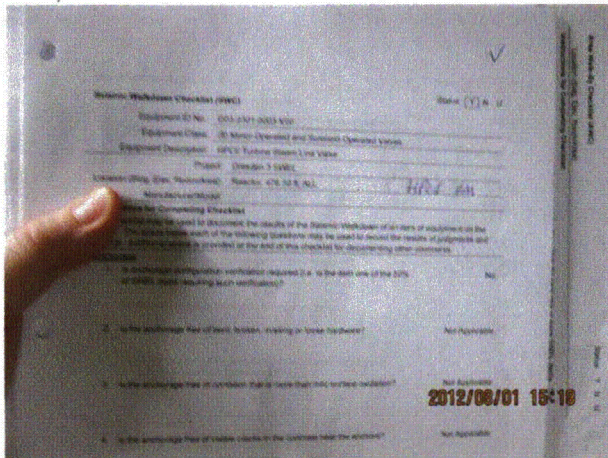
Seismic Walkdown Checklist (SWC)

Equipment ID No.: D03-2301-0003-V20

Equipment Class: (8) Motor-Operated and Solenoid-Operated Valves

Equipment Description: HPCI/ Turbine Steam Line Valve

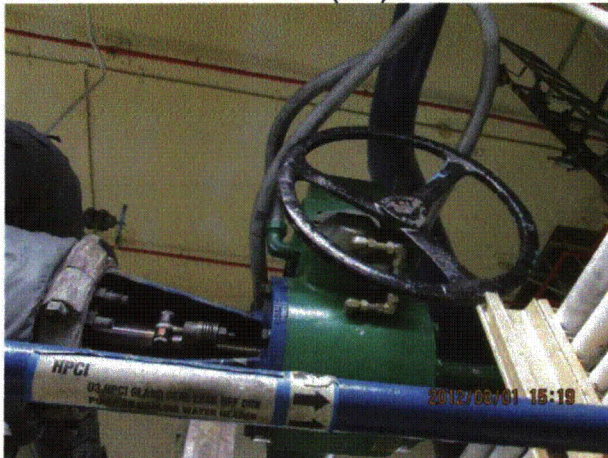
Photos



20120801-Dresden-3 Part 2 (124)



20120801-Dresden-3 Part 2 (125)



20120801-Dresden-3 Part 2 (126)



20120801-Dresden-3 Part 2 (127)

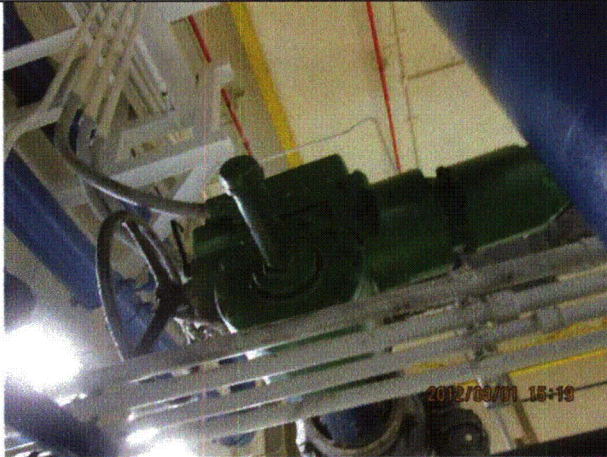
Status: Y N U

Seismic Walkdown Checklist (SWC)

Equipment ID No.: D03-2301-0003-V20

Equipment Class: (8) Motor-Operated and Solenoid-Operated Valves

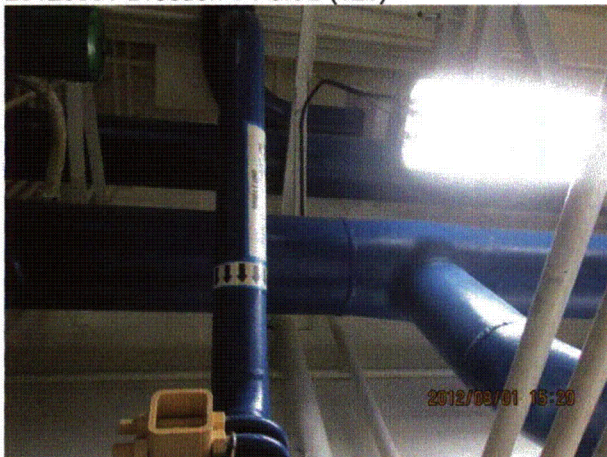
Equipment Description: HPCI/ Turbine Steam Line Valve



20120801-Dresden-3 Part 2 (128)



20120801-Dresden-3 Part 2 (129)



20120801-Dresden-3 Part 2 (130)



20120801-Dresden-3 Part 2 (131)

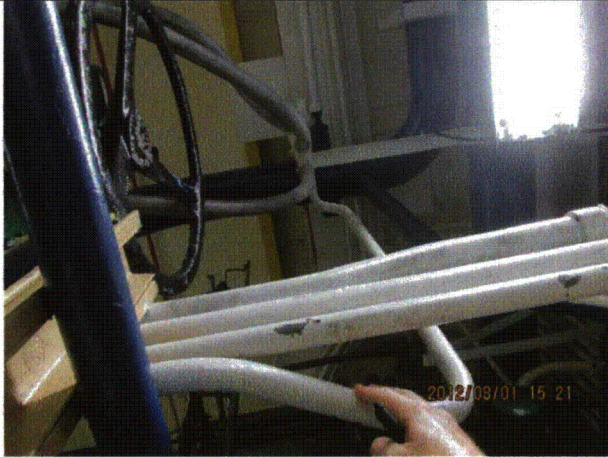
Status: Y N U

Seismic Walkdown Checklist (SWC)

Equipment ID No.: D03-2301-0003-V20

Equipment Class: (8) Motor-Operated and Solenoid-Operated Valves

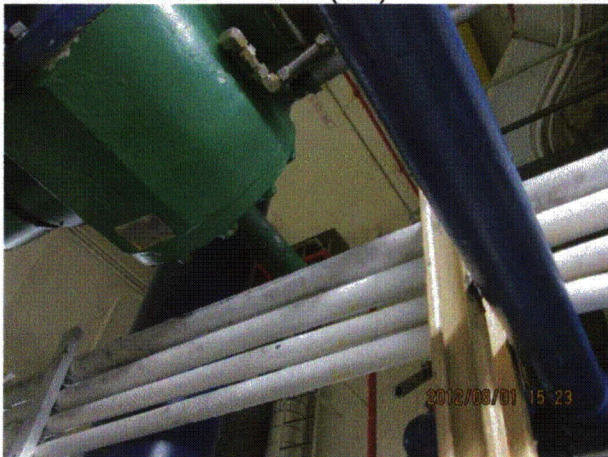
Equipment Description: HPCI/ Turbine Steam Line Valve



20120801-Dresden-3 Part 2 (132)



20120801-Dresden-3 Part 2 (133)



20120801-Dresden-3 Part 2 (134)



20120801-Dresden-3 Part 2 (135)

Status: Y N U

Seismic Walkdown Checklist (SWC)

Equipment ID No.: D03-2301-0003-V20

Equipment Class: (8) Motor-Operated and Solenoid-Operated Valves

Equipment Description: HPCI/ Turbine Steam Line Valve



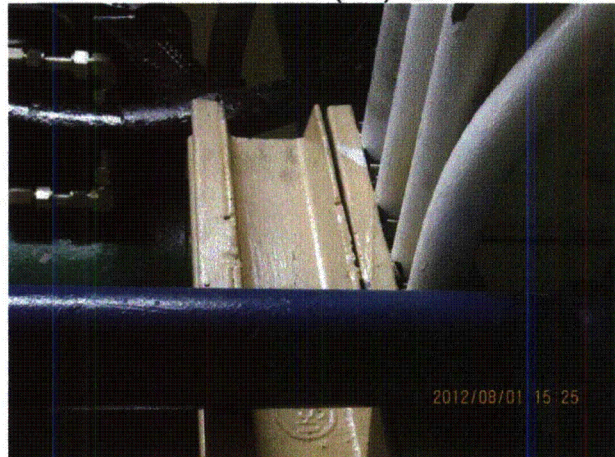
20120801-Dresden-3 Part 2 (136)



20120801-Dresden-3 Part 2 (137)



20120801-Dresden-3 Part 2 (138)



20120801-Dresden-3 Part 2 (139)

Status: Y N U

Seismic Walkdown Checklist (SWC)

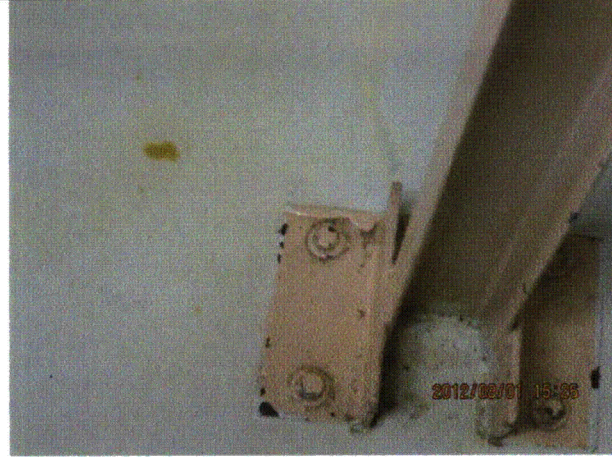
Equipment ID No.: D03-2301-0003-V20

Equipment Class: (8) Motor-Operated and Solenoid-Operated Valves

Equipment Description: HPCI/ Turbine Steam Line Valve



20120801-Dresden-3 Part 2 (140)



20120801-Dresden-3 Part 2 (141)

Status: Y N U

Seismic Walkdown Checklist (SWC)

Equipment ID No.: D03-2301-0006-V20

Equipment Class: (8) Motor-Operated and Solenoid-Operated Valves

Equipment Description: HPCI/ Condensate Tank Supply to HPCI Pump Valve

Project: Dresden 3 SWEL

Location (Bldg, Elev, Room/Area): Reactor, 476.50 ft, ALL

Manufacturer/Model:

Instructions for Completing Checklist

This checklist may be used to document the results of the Seismic Walkdown of an item of equipment on the SWEL. The space below each of the following questions may be used to record the results of judgments and findings. Additional space is provided at the end of this checklist for documenting other comments.

Anchorage

1. Is anchorage configuration verification required (i.e., is the item one of the 50% of SWEL items requiring such verification)? No

2. Is the anchorage free of bent, broken, missing or loose hardware? Not Applicable

3. Is the anchorage free of corrosion that is more than mild surface oxidation? Not Applicable

4. Is the anchorage free of visible cracks in the concrete near the anchors? Not Applicable

5. Is the anchorage configuration consistent with plant documentation? (Note: This question only applies if the item is one of the 50% for which an anchorage configuration verification is required.) Not Applicable

6. Based on the above anchorage evaluations, is the anchorage free of potentially adverse seismic conditions? Yes

Status: Y N U

Seismic Walkdown Checklist (SWC)

Equipment ID No.: D03-2301-0006-V20

Equipment Class: (8) Motor-Operated and Solenoid-Operated Valves

Equipment Description: HPCI/ Condensate Tank Supply to HPCI Pump Valve

Interaction Effects

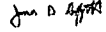

7. Are soft targets free from impact by nearby equipment or structures? Yes
8. Are overhead equipment, distribution systems, ceiling tiles and lighting, and masonry block walls not likely to collapse onto the equipment? Yes
Overhead light fixture with an open S-hook. Fixture has hard-wired cord and will not impact soft targets. Judged to be acceptable. See IR 1396017.
9. Do attached lines have adequate flexibility to avoid damage? Yes
10. Based on the above seismic interaction evaluations, is equipment free of potentially adverse seismic interaction effects? Yes

Other Adverse Conditions

11. Have you looked for and found no adverse seismic conditions that could adversely affect the safety functions of the equipment? Yes

Comments

Seismic Walkdown Team: J. Griffith & M. Wodarczyk - 8/1/2012

Evaluated by:  James Griffith Date: 9/30/2012
 Michael Wodarczyk 9/30/2012

Status: Y N U

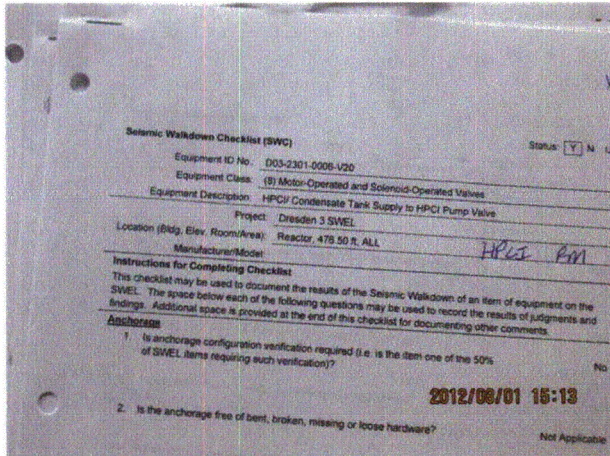
Seismic Walkdown Checklist (SWC)

Equipment ID No.: D03-2301-0006-V20

Equipment Class: (8) Motor-Operated and Solenoid-Operated Valves

Equipment Description: HPCI/ Condensate Tank Supply to HPCI Pump Valve

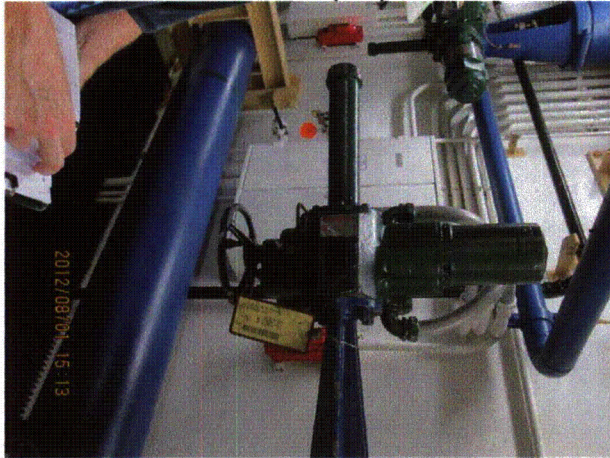
Photos



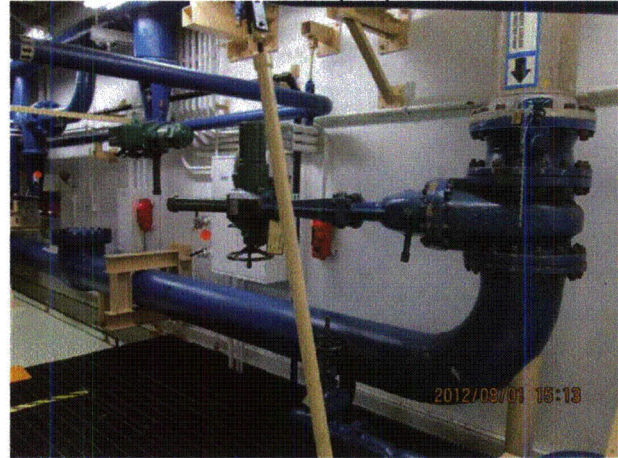
20120801-Dresden-3 Part 2 (106)



20120801-Dresden-3 Part 2 (107)



20120801-Dresden-3 Part 2 (108)



20120801-Dresden-3 Part 2 (109)

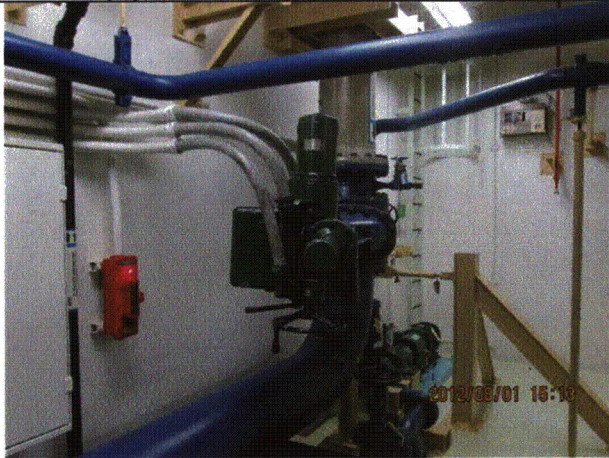
Status: Y N U

Seismic Walkdown Checklist (SWC)

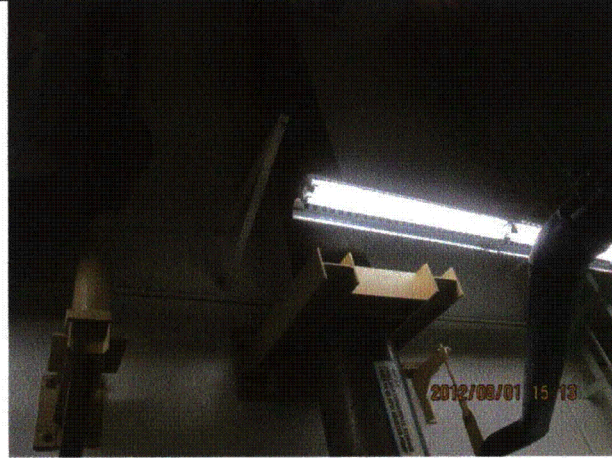
Equipment ID No.: D03-2301-0006-V20

Equipment Class: (8) Motor-Operated and Solenoid-Operated Valves

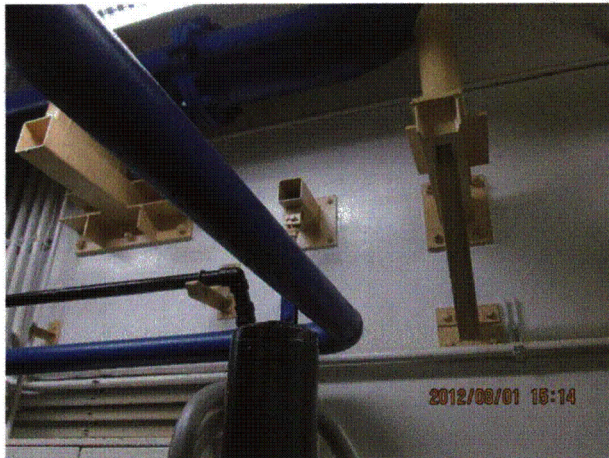
Equipment Description: HPCI/ Condensate Tank Supply to HPCI Pump Valve



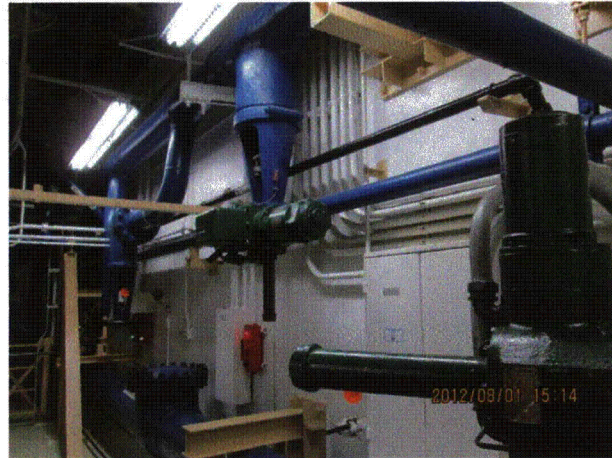
20120801-Dresden-3 Part 2 (110)



20120801-Dresden-3 Part 2 (111)



20120801-Dresden-3 Part 2 (114)



20120801-Dresden-3 Part 2 (115)

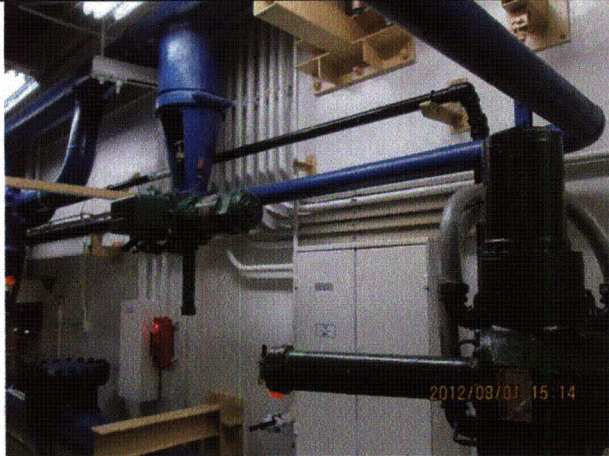
Status: Y N U

Seismic Walkdown Checklist (SWC)

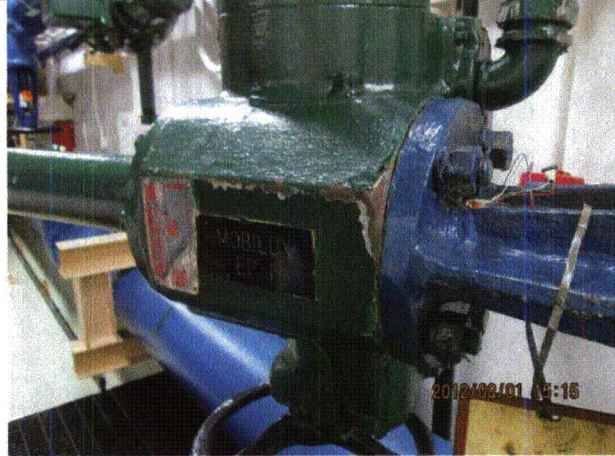
Equipment ID No.: D03-2301-0006-V20

Equipment Class: (8) Motor-Operated and Solenoid-Operated Valves

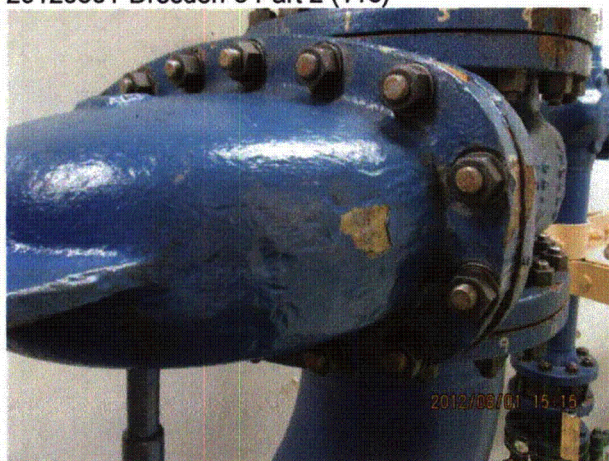
Equipment Description: HPCI/ Condensate Tank Supply to HPCI Pump Valve



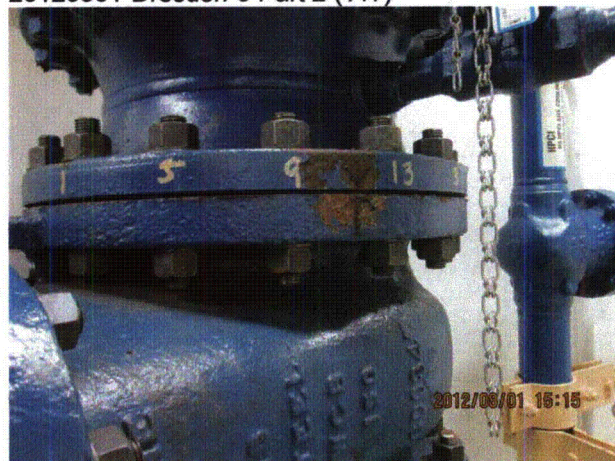
20120801-Dresden-3 Part 2 (116)



20120801-Dresden-3 Part 2 (117)



20120801-Dresden-3 Part 2 (118)



20120801-Dresden-3 Part 2 (119)

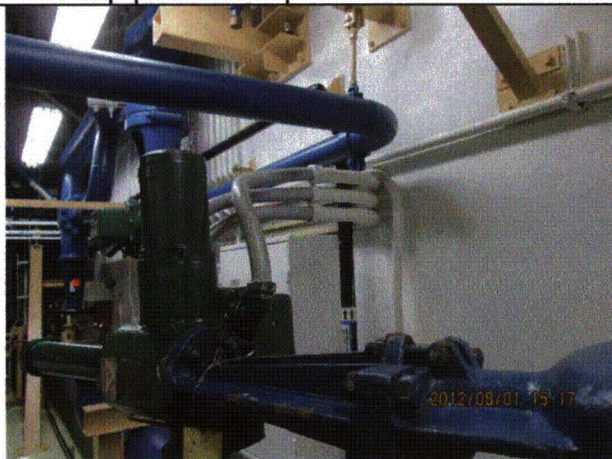
Status: Y N U

Seismic Walkdown Checklist (SWC)

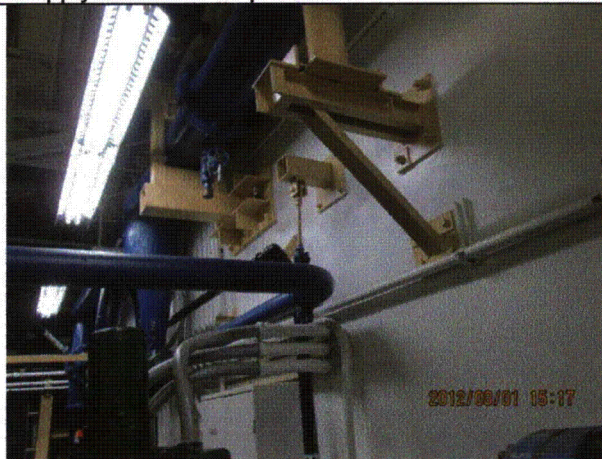
Equipment ID No.: D03-2301-0006-V20

Equipment Class: (8) Motor-Operated and Solenoid-Operated Valves

Equipment Description: HPCI/ Condensate Tank Supply to HPCI Pump Valve



20120801-Dresden-3 Part 2 (120)



20120801-Dresden-3 Part 2 (121)



20120801-Dresden-3 Part 2 (122)



20120801-Dresden-3 Part 2 (123)

Status: Y N U

Seismic Walkdown Checklist (SWC)

Equipment ID No.: D03-2301-0035-V20

Equipment Class: (8) Motor-Operated and Solenoid-Operated Valves

Equipment Description: HPCI/ Suppression Pool Suction Line Valve

Project: Dresden 3 SWEL

Location (Bldg, Elev, Room/Area): Reactor, 476.50 ft, ALL

Manufacturer/Model:

Instructions for Completing Checklist

This checklist may be used to document the results of the Seismic Walkdown of an item of equipment on the SWEL. The space below each of the following questions may be used to record the results of judgments and findings. Additional space is provided at the end of this checklist for documenting other comments.

Anchorage

- | | |
|--|----------------|
| 1. Is anchorage configuration verification required (i.e., is the item one of the 50% of SWEL items requiring such verification)? | No |
| 2. Is the anchorage free of bent, broken, missing or loose hardware? | Not Applicable |
| 3. Is the anchorage free of corrosion that is more than mild surface oxidation? | Not Applicable |
| 4. Is the anchorage free of visible cracks in the concrete near the anchors? | Not Applicable |
| 5. Is the anchorage configuration consistent with plant documentation? (Note: This question only applies if the item is one of the 50% for which an anchorage configuration verification is required.) | Not Applicable |
| 6. Based on the above anchorage evaluations, is the anchorage free of potentially adverse seismic conditions? | Yes |

Status: Y N U

Seismic Walkdown Checklist (SWC)

Equipment ID No.: D03-2301-0035-V20

Equipment Class: (8) Motor-Operated and Solenoid-Operated Valves

Equipment Description: HPCI/ Suppression Pool Suction Line Valve

Interaction Effects

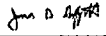

7. Are soft targets free from impact by nearby equipment or structures? Yes
8. Are overhead equipment, distribution systems, ceiling tiles and lighting, and masonry block walls not likely to collapse onto the equipment? Yes
9. Do attached lines have adequate flexibility to avoid damage? Yes
10. Based on the above seismic interaction evaluations, is equipment free of potentially adverse seismic interaction effects? Yes

Other Adverse Conditions

11. Have you looked for and found no adverse seismic conditions that could adversely affect the safety functions of the equipment? Yes

Comments

Seismic Walkdown Team: J. Griffith & M. Wodarczyk - 8/1/2012

Evaluated by:  James Griffith Date: 9/30/2012
 Michael Wodarczyk 9/30/2012

Status: Y N U

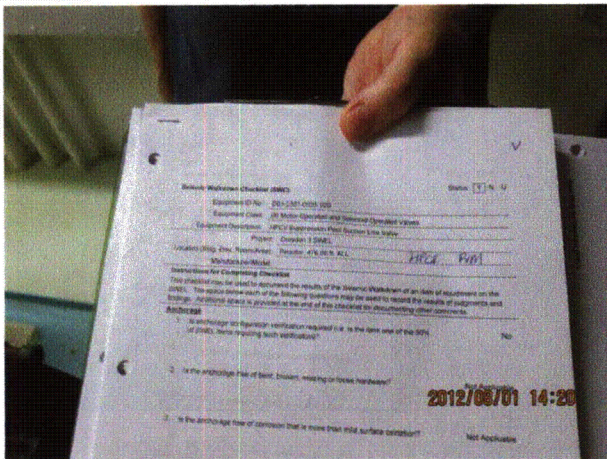
Seismic Walkdown Checklist (SWC)

Equipment ID No.: D03-2301-0035-V20

Equipment Class: (8) Motor-Operated and Solenoid-Operated Valves

Equipment Description: HPCI/ Suppression Pool Suction Line Valve

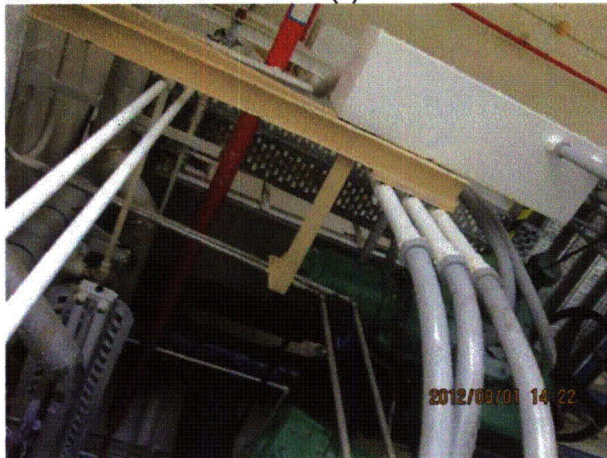
Photos



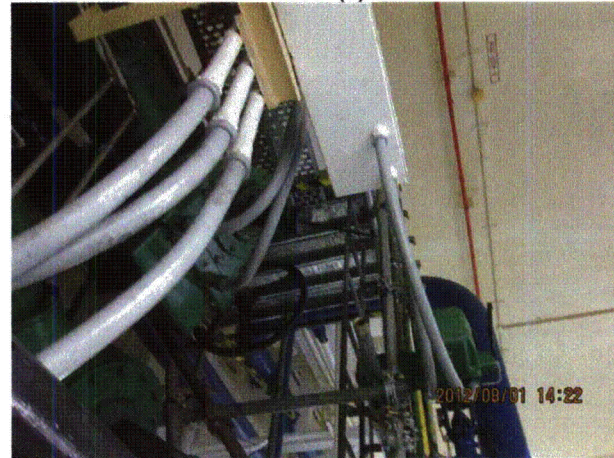
20120801-Dresden-3 Part 2 (0)



20120801-Dresden-3 Part 2 (1)



20120801-Dresden-3 Part 2 (10)



20120801-Dresden-3 Part 2 (11)

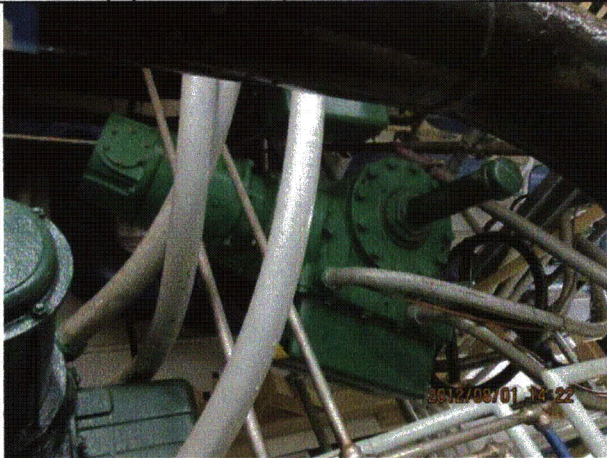
Status: Y N U

Seismic Walkdown Checklist (SWC)

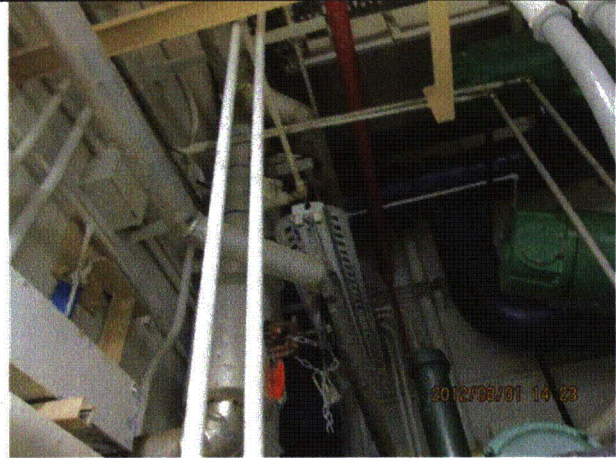
Equipment ID No.: D03-2301-0035-V20

Equipment Class: (8) Motor-Operated and Solenoid-Operated Valves

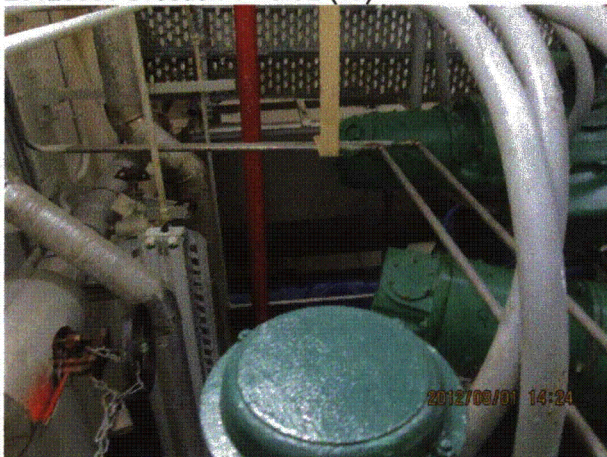
Equipment Description: HPCI/ Suppression Pool Suction Line Valve



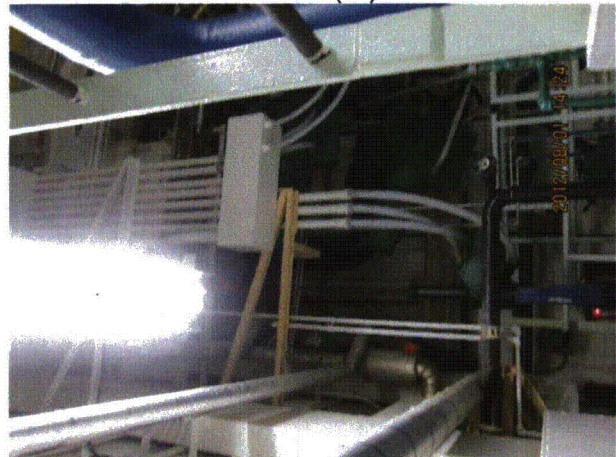
20120801-Dresden-3 Part 2 (12)



20120801-Dresden-3 Part 2 (13)



20120801-Dresden-3 Part 2 (14)



20120801-Dresden-3 Part 2 (15)

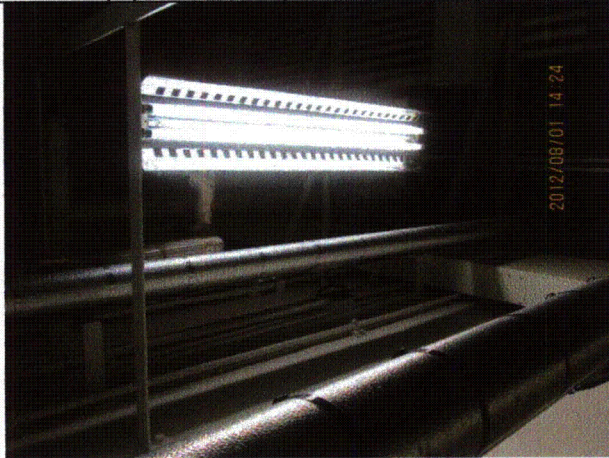
Status: Y N U

Seismic Walkdown Checklist (SWC)

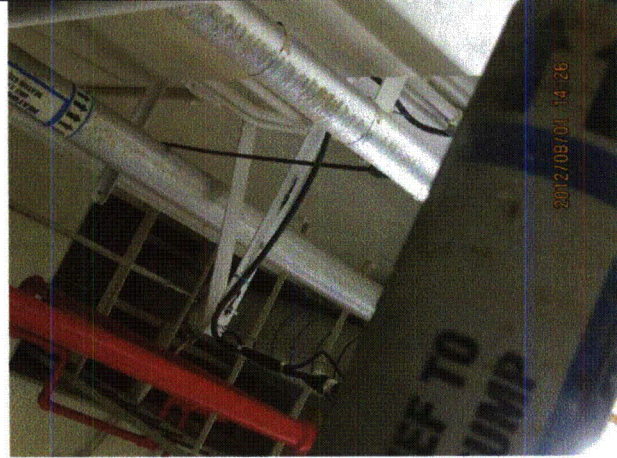
Equipment ID No.: D03-2301-0035-V20

Equipment Class: (8) Motor-Operated and Solenoid-Operated Valves

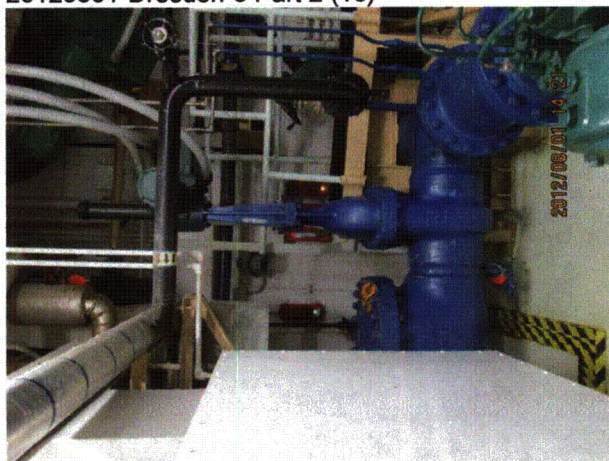
Equipment Description: HPCI/ Suppression Pool Suction Line Valve



20120801-Dresden-3 Part 2 (16)



20120801-Dresden-3 Part 2 (17)



20120801-Dresden-3 Part 2 (2)



20120801-Dresden-3 Part 2 (3)

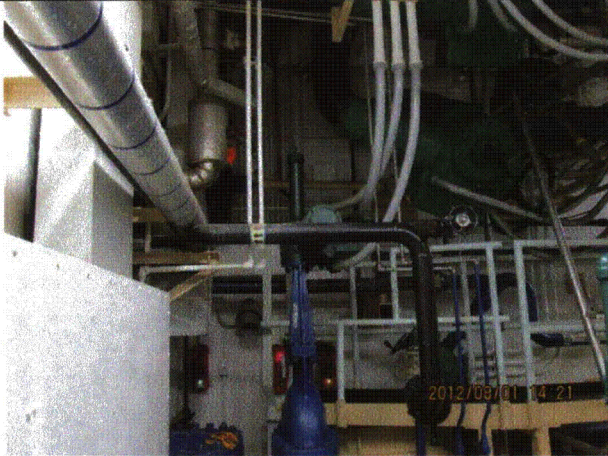
Status: Y N U

Seismic Walkdown Checklist (SWC)

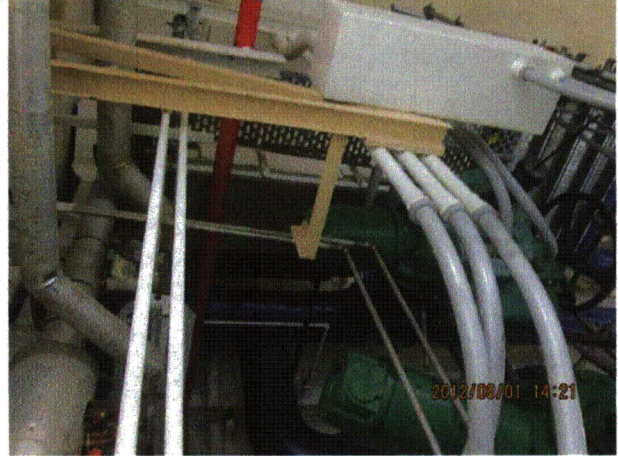
Equipment ID No.: D03-2301-0035-V20

Equipment Class: (8) Motor-Operated and Solenoid-Operated Valves

Equipment Description: HPCI/ Suppression Pool Suction Line Valve



20120801-Dresden-3 Part 2 (4)



20120801-Dresden-3 Part 2 (5)



20120801-Dresden-3 Part 2 (6)



20120801-Dresden-3 Part 2 (7)

Status: Y N U

Seismic Walkdown Checklist (SWC)

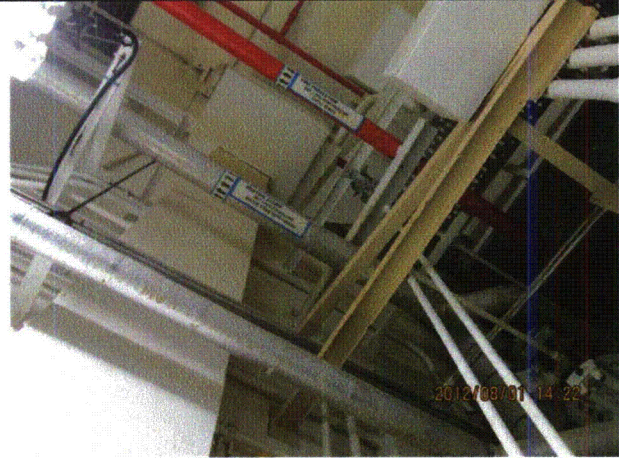
Equipment ID No.: D03-2301-0035-V20

Equipment Class: (8) Motor-Operated and Solenoid-Operated Valves

Equipment Description: HPCI/ Suppression Pool Suction Line Valve



20120801-Dresden-3 Part 2 (8)



20120801-Dresden-3 Part 2 (9)

Status: Y N U

Seismic Walkdown Checklist (SWC)

Equipment ID No.: D03-2301-0057-P30

Equipment Class: (5) Horizontal Pumps

Equipment Description: HPCI/ HPCI Turbine Cooling Water Pump

Project: Dresden 3 SWEL

Location (Bldg, Elev, Room/Area): Reactor, 476.50 ft, ALL

Manufacturer/Model:

Instructions for Completing Checklist

This checklist may be used to document the results of the Seismic Walkdown of an item of equipment on the SWEL. The space below each of the following questions may be used to record the results of judgments and findings. Additional space is provided at the end of this checklist for documenting other comments.

Anchorage

1. Is anchorage configuration verification required (i.e., is the item one of the 50% of SWEL items requiring such verification)? Yes

2. Is the anchorage free of bent, broken, missing or loose hardware? Yes

3. Is the anchorage free of corrosion that is more than mild surface oxidation? Yes

4. Is the anchorage free of visible cracks in the concrete near the anchors? Yes

5. Is the anchorage configuration consistent with plant documentation? (Note: This question only applies if the item is one of the 50% for which an anchorage configuration verification is required.) Yes

6. Based on the above anchorage evaluations, is the anchorage free of potentially adverse seismic conditions? Yes

Status: Y N U

Seismic Walkdown Checklist (SWC)

Equipment ID No.: D03-2301-0057-P30

Equipment Class: (5) Horizontal Pumps

Equipment Description: HPCI/ HPCI Turbine Cooling Water Pump

Interaction Effects

7. Are soft targets free from impact by nearby equipment or structures? Yes
8. Are overhead equipment, distribution systems, ceiling tiles and lighting, and masonry block walls not likely to collapse onto the equipment? Yes
Overhead light fixture with an open S-hook. Fixture has hard-wired cord and will not impact soft targets. Judged to be acceptable. See IR 1396017.
9. Do attached lines have adequate flexibility to avoid damage? Yes
10. Based on the above seismic interaction evaluations, is equipment free of potentially adverse seismic interaction effects? Yes

Other Adverse Conditions

11. Have you looked for and found no adverse seismic conditions that could adversely affect the safety functions of the equipment? Yes

Comments

SEWS Anchorage Notes:

Small horizontal Ingersoll pump. Bolted with three 7/8" diameter cast-in-place bolts per side.

Seismic Walkdown Team: J. Griffith & M. Wodarczyk - 8/1/2012

Evaluated by:

 James Griffith

Date: 9/30/2012



Michael Wodarczyk

9/30/2012

Status: Y N U

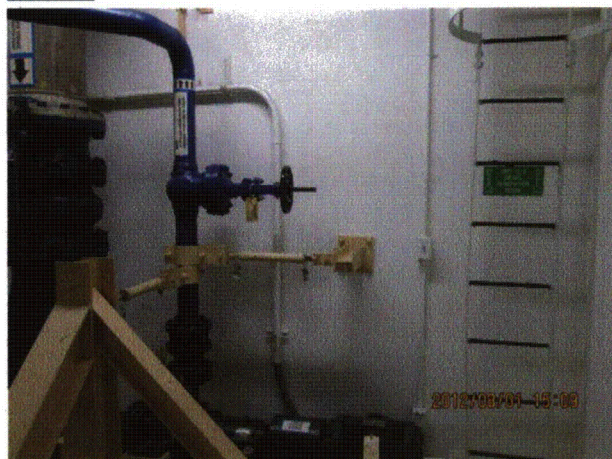
Seismic Walkdown Checklist (SWC)

Equipment ID No.: D03-2301-0057-P30

Equipment Class: (5) Horizontal Pumps

Equipment Description: HPCI/ HPCI Turbine Cooling Water Pump

Photos



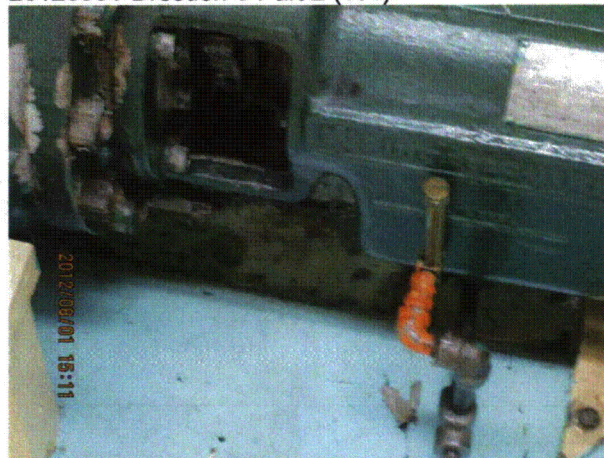
20120801-Dresden-3 Part 2 (100)



20120801-Dresden-3 Part 2 (101)



20120801-Dresden-3 Part 2 (102)



20120801-Dresden-3 Part 2 (103)

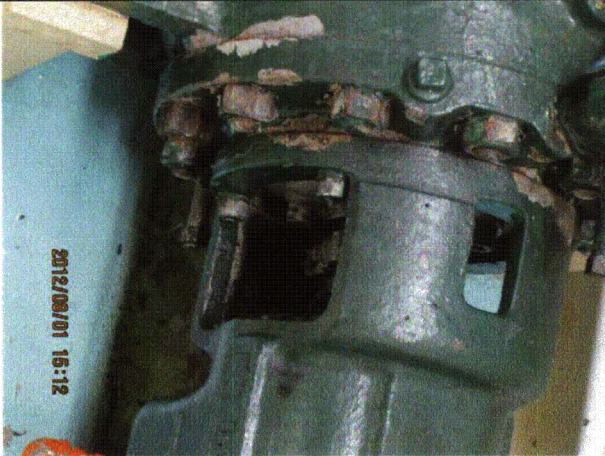
Status: Y N U

Seismic Walkdown Checklist (SWC)

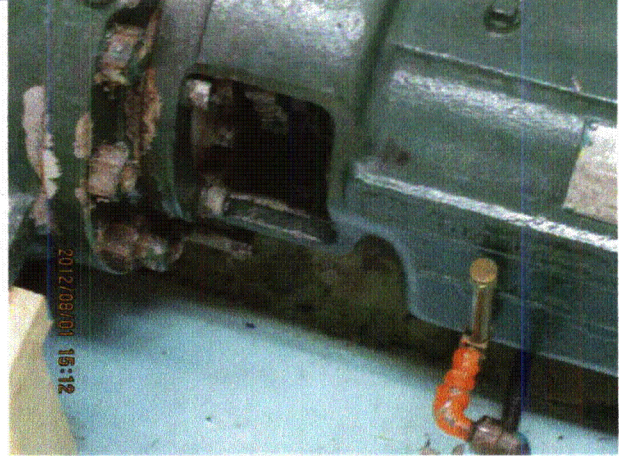
Equipment ID No.: D03-2301-0057-P30

Equipment Class: (5) Horizontal Pumps

Equipment Description: HPCI/ HPCI Turbine Cooling Water Pump



20120801-Dresden-3 Part 2 (104)



20120801-Dresden-3 Part 2 (105)

Seismic Walkdown Checklist (SWC) Status: Y N U

Equipment ID No. D03-2301-0057-P30

Equipment Class: (5) Horizontal Pumps

Equipment Description: HPCI/ HPCI Turbine Cooling Water Pump

Project: Dresden 3 SWEL

Location (Bldg, Elev, Room/Area): Reactor 476.50 ft. ALL HPCI AM

Manufacturer/Model:

Instructions for Completing Checklist
This checklist may be used to document the results of the Seismic Walkdown of an item of equipment on the SWEL. The space below each of the following questions may be used to record the results of judgments and findings. Additional space is provided at the end of this checklist for documenting other comments.

Anchorage

1. Is anchorage configuration verification required (i.e. is the item one of the 50% of SWEL items requiring such verification)?
2. Is the anchorage free of bent, broken, missing or loose hardware? 2012/08/01 15:06

20120801-Dresden-3 Part 2 (87)



20120801-Dresden-3 Part 2 (88)

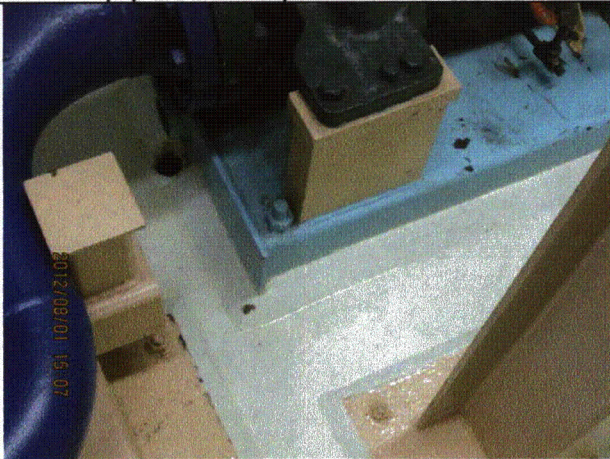
Status: Y N U

Seismic Walkdown Checklist (SWC)

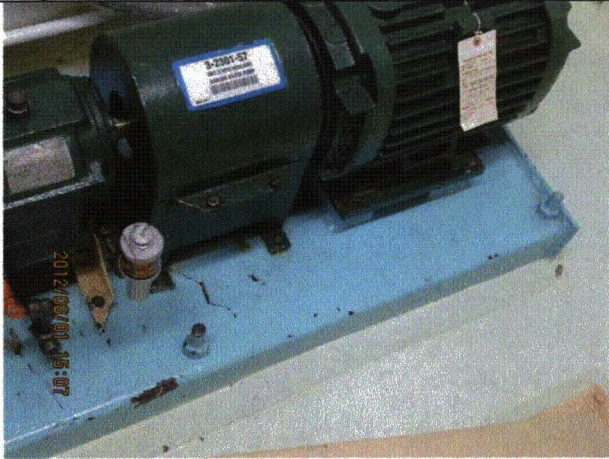
Equipment ID No.: D03-2301-0057-P30

Equipment Class: (5) Horizontal Pumps

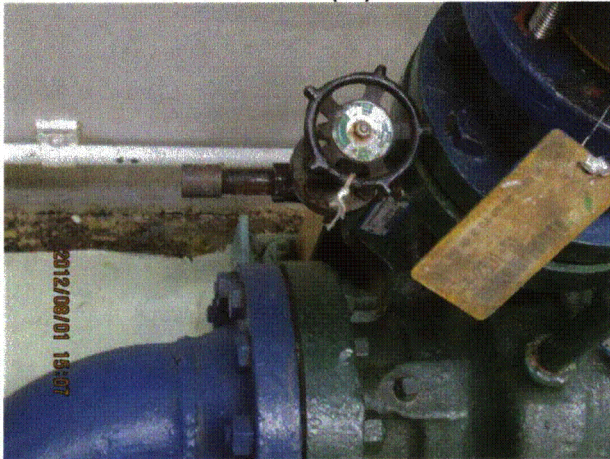
Equipment Description: HPCI/ HPCI Turbine Cooling Water Pump



20120801-Dresden-3 Part 2 (89)



20120801-Dresden-3 Part 2 (90)



20120801-Dresden-3 Part 2 (91)



20120801-Dresden-3 Part 2 (92)

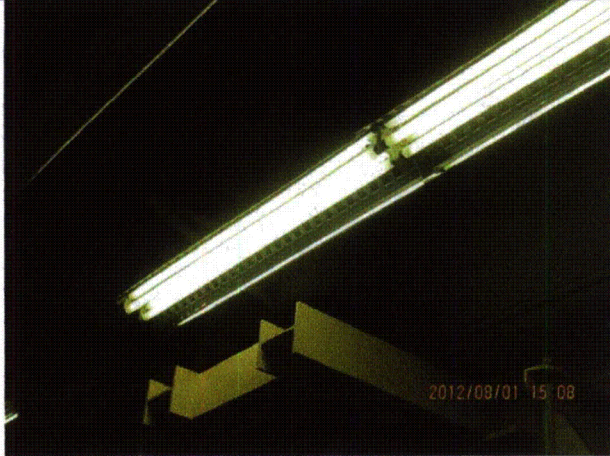
Status: Y N U

Seismic Walkdown Checklist (SWC)

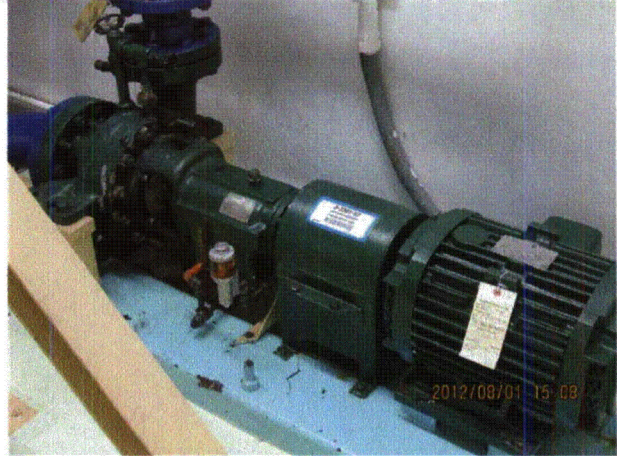
Equipment ID No.: D03-2301-0057-P30

Equipment Class: (5) Horizontal Pumps

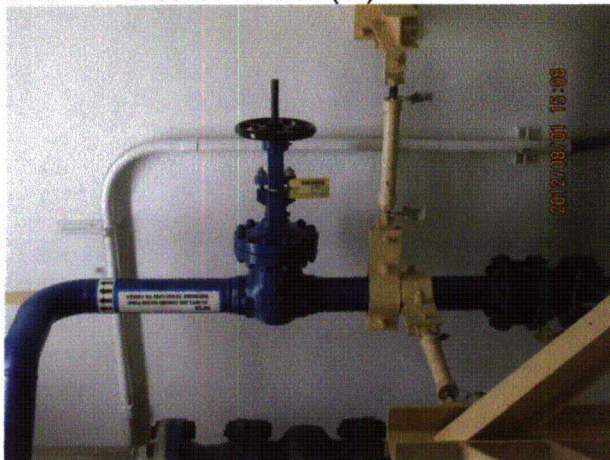
Equipment Description: HPCI/ HPCI Turbine Cooling Water Pump



20120801-Dresden-3 Part 2 (93)



20120801-Dresden-3 Part 2 (94)



20120801-Dresden-3 Part 2 (95)



20120801-Dresden-3 Part 2 (96)

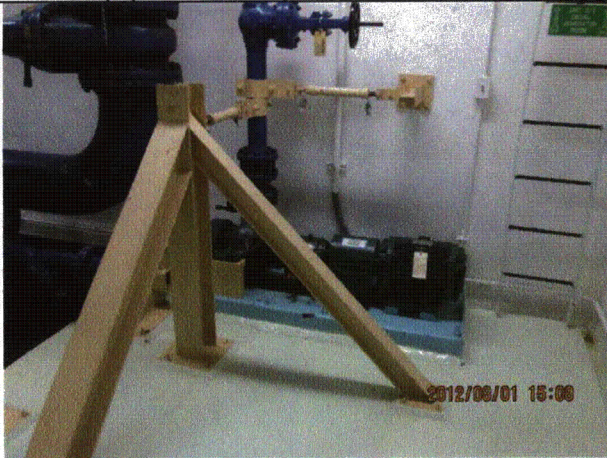
Status: Y N U

Seismic Walkdown Checklist (SWC)

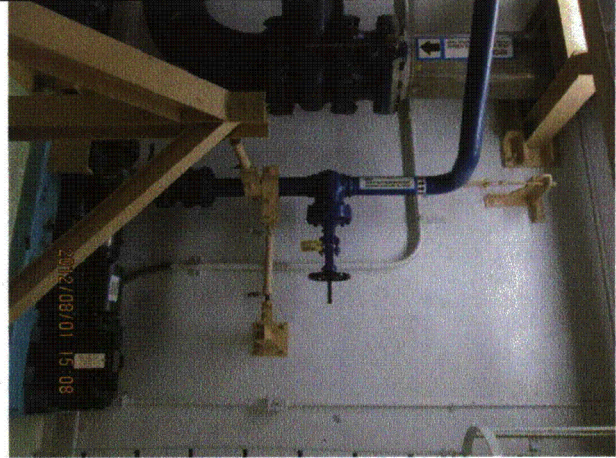
Equipment ID No.: D03-2301-0057-P30

Equipment Class: (5) Horizontal Pumps

Equipment Description: HPCI/ HPCI Turbine Cooling Water Pump



20120801-Dresden-3 Part 2 (97)



20120801-Dresden-3 Part 2 (98)



20120801-Dresden-3 Part 2 (99)

Status: Y N U

Seismic Walkdown Checklist (SWC)

Equipment ID No.: D03-2302-----P30

Equipment Class: (5) Horizontal Pumps

Equipment Description: HPCI/ HPCI Pump

Project: Dresden 3 SWEL

Location (Bldg, Elev, Room/Area): Reactor, 476.50 ft, ALL

Manufacturer/Model:

Instructions for Completing Checklist

This checklist may be used to document the results of the Seismic Walkdown of an item of equipment on the SWEL. The space below each of the following questions may be used to record the results of judgments and findings. Additional space is provided at the end of this checklist for documenting other comments.

Anchorage

1. Is anchorage configuration verification required (i.e., is the item one of the 50% of SWEL items requiring such verification)? Yes

2. Is the anchorage free of bent, broken, missing or loose hardware? Yes

3. Is the anchorage free of corrosion that is more than mild surface oxidation? Yes

4. Is the anchorage free of visible cracks in the concrete near the anchors? Yes

5. Is the anchorage configuration consistent with plant documentation? (Note: This question only applies if the item is one of the 50% for which an anchorage configuration verification is required.) Yes

6. Based on the above anchorage evaluations, is the anchorage free of potentially adverse seismic conditions? Yes

Status: Y N U

Seismic Walkdown Checklist (SWC)

Equipment ID No.: D03-2302-----P30

Equipment Class: (5) Horizontal Pumps

Equipment Description: HPCI/ HPCI Pump

Interaction Effects

- | | |
|---|-----|
| 7. Are soft targets free from impact by nearby equipment or structures? | Yes |
| 8. Are overhead equipment, distribution systems, ceiling tiles and lighting, and masonry block walls not likely to collapse onto the equipment? | Yes |
| 9. Do attached lines have adequate flexibility to avoid damage? | Yes |
| 10. Based on the above seismic interaction evaluations, is equipment free of potentially adverse seismic interaction effects? | Yes |

Other Adverse Conditions

- | | |
|--|-----|
| 11. Have you looked for and found no adverse seismic conditions that could adversely affect the safety functions of the equipment? | Yes |
|--|-----|

Comments

SEWS Anchorage Notes:

There are four 1" diameter cast-in-place bolts per side.

Seismic Walkdown Team: J. Griffith & M. Wodarcyk - 8/1/2012

Evaluated by: *James D. Griffith* James Griffith Date: 9/30/2012

Michael J. Wodarcyk
Michael Wodarcyk 9/30/2012

Status: Y N U

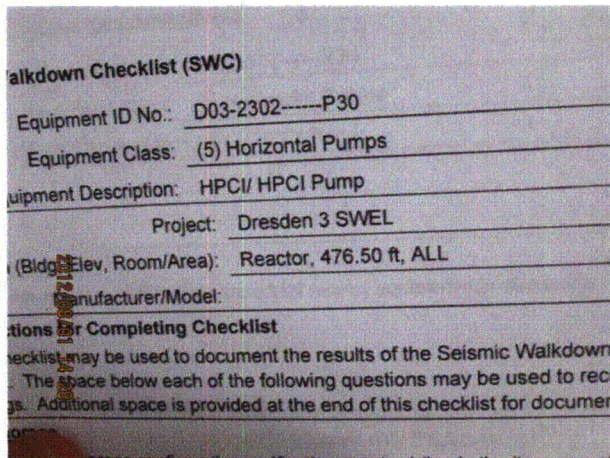
Seismic Walkdown Checklist (SWC)

Equipment ID No.: D03-2302-----P30

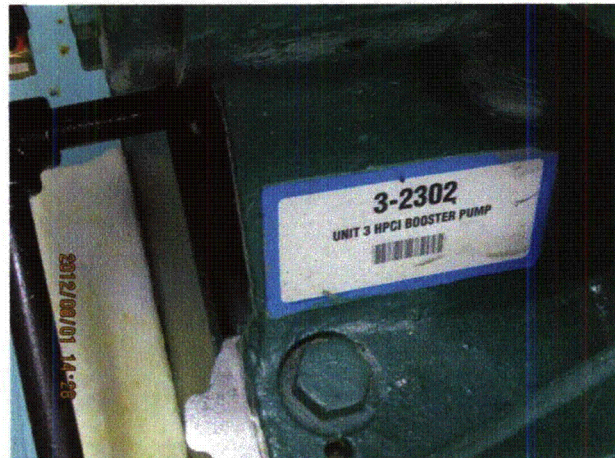
Equipment Class: (5) Horizontal Pumps

Equipment Description: HPCI/ HPCI Pump

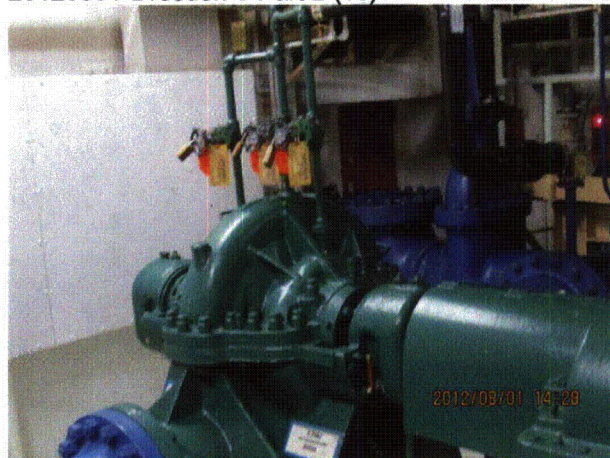
Photos



20120801-Dresden-3 Part 2 (18)



20120801-Dresden-3 Part 2 (19)



20120801-Dresden-3 Part 2 (20)



20120801-Dresden-3 Part 2 (21)

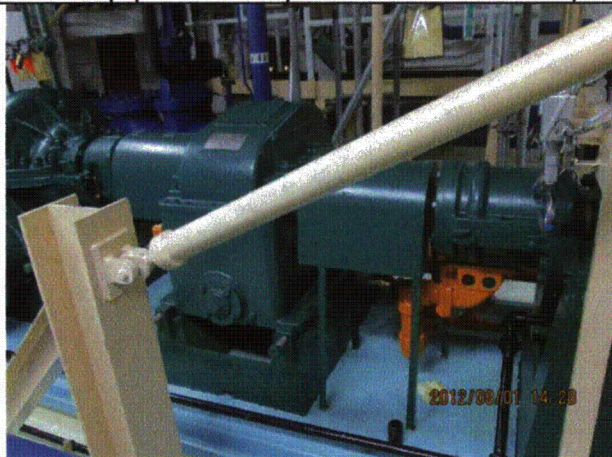
Status: Y N U

Seismic Walkdown Checklist (SWC)

Equipment ID No.: D03-2302-----P30

Equipment Class: (5) Horizontal Pumps

Equipment Description: HPCI/ HPCI Pump



20120801-Dresden-3 Part 2 (22)



20120801-Dresden-3 Part 2 (23)



20120801-Dresden-3 Part 2 (24)



20120801-Dresden-3 Part 2 (25)

Status: Y N U

Seismic Walkdown Checklist (SWC)

Equipment ID No.: D03-2302-----P30

Equipment Class: (5) Horizontal Pumps

Equipment Description: HPCI/ HPCI Pump



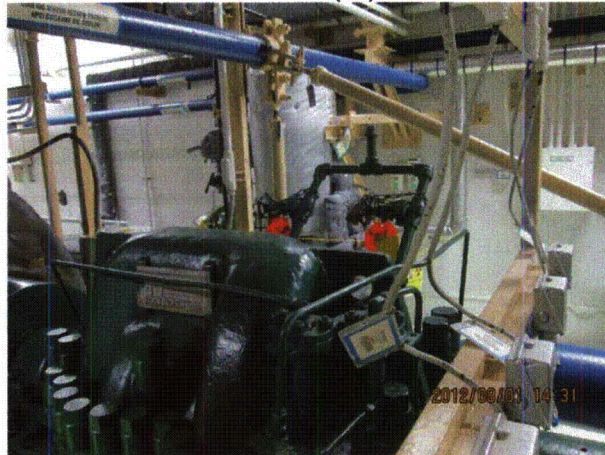
20120801-Dresden-3 Part 2 (26)



20120801-Dresden-3 Part 2 (27)



20120801-Dresden-3 Part 2 (28)



20120801-Dresden-3 Part 2 (29)

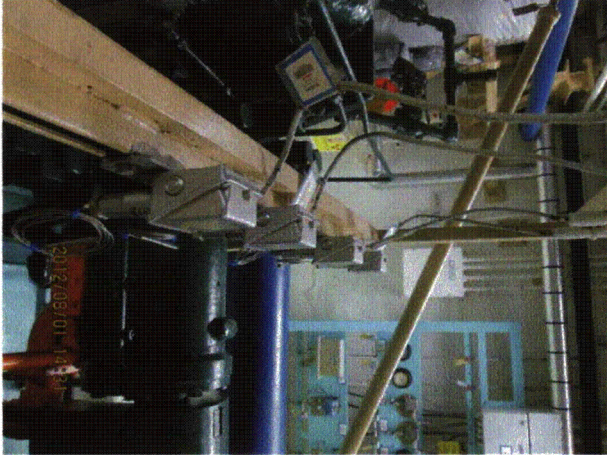
Status: Y N U

Seismic Walkdown Checklist (SWC)

Equipment ID No.: D03-2302-----P30

Equipment Class: (5) Horizontal Pumps

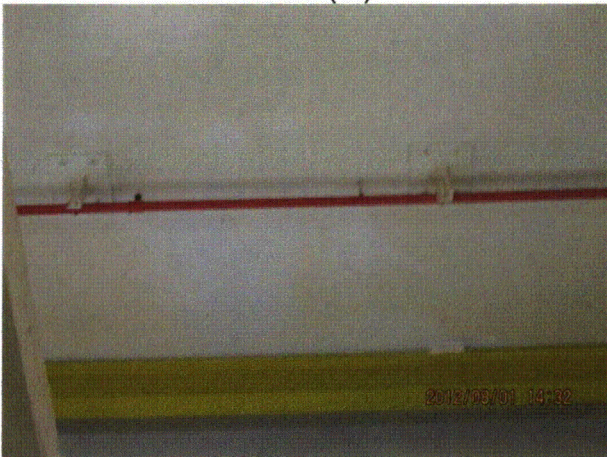
Equipment Description: HPCI/ HPCI Pump



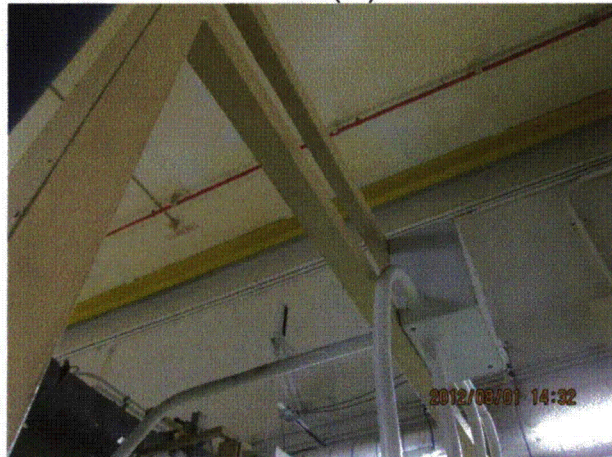
20120801-Dresden-3 Part 2 (30)



20120801-Dresden-3 Part 2 (31)



20120801-Dresden-3 Part 2 (32)



20120801-Dresden-3 Part 2 (33)

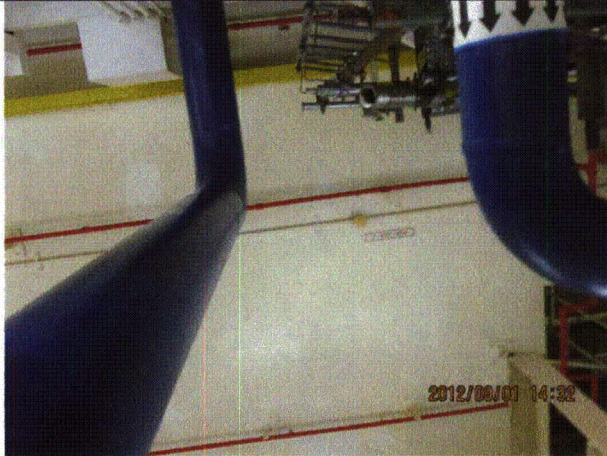
Status: Y N U

Seismic Walkdown Checklist (SWC)

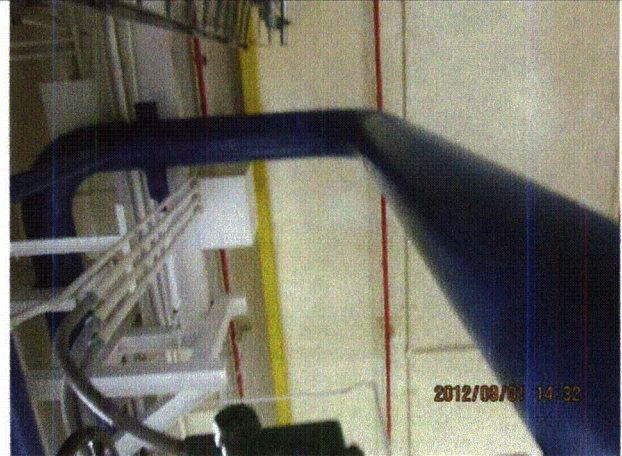
Equipment ID No.: D03-2302-----P30

Equipment Class: (5) Horizontal Pumps

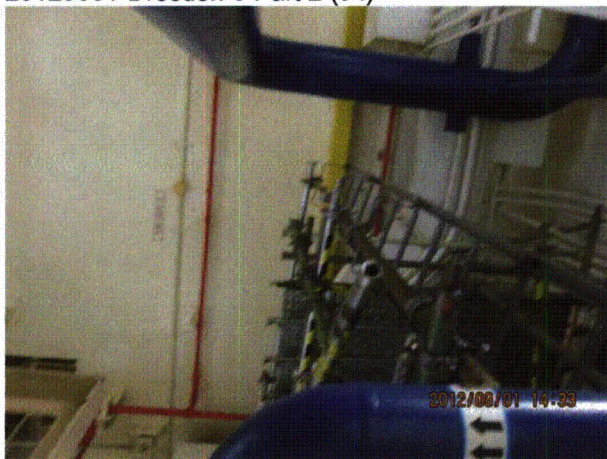
Equipment Description: HPCI/ HPCI Pump



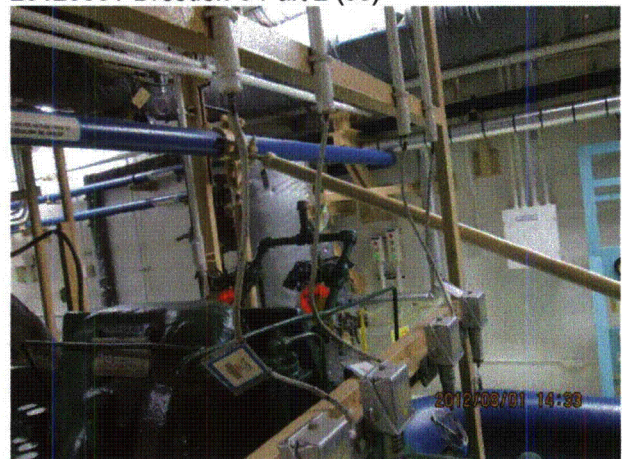
20120801-Dresden-3 Part 2 (34)



20120801-Dresden-3 Part 2 (35)



20120801-Dresden-3 Part 2 (36)



20120801-Dresden-3 Part 2 (37)

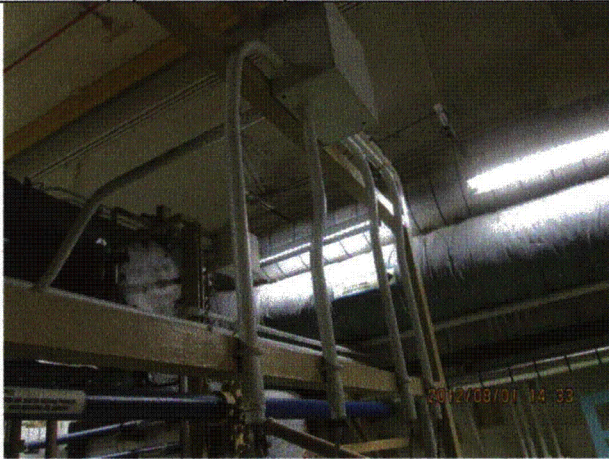
Status: Y N U

Seismic Walkdown Checklist (SWC)

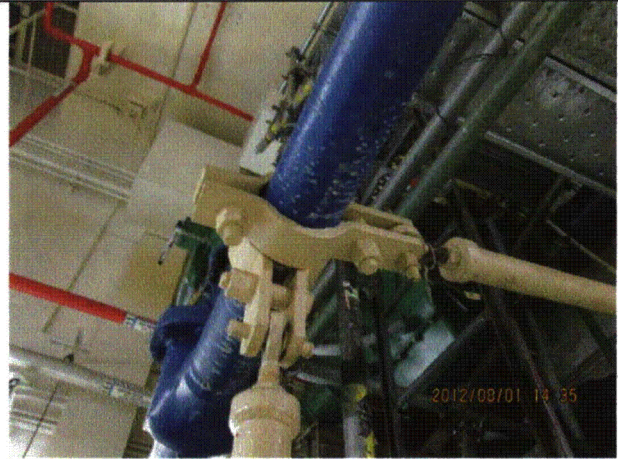
Equipment ID No.: D03-2302-----P30

Equipment Class: (5) Horizontal Pumps

Equipment Description: HPCI/ HPCI Pump



20120801-Dresden-3 Part 2 (38)



20120801-Dresden-3 Part 2 (39)



20120801-Dresden-3 Part 2 (40)



20120801-Dresden-3 Part 2 (41)

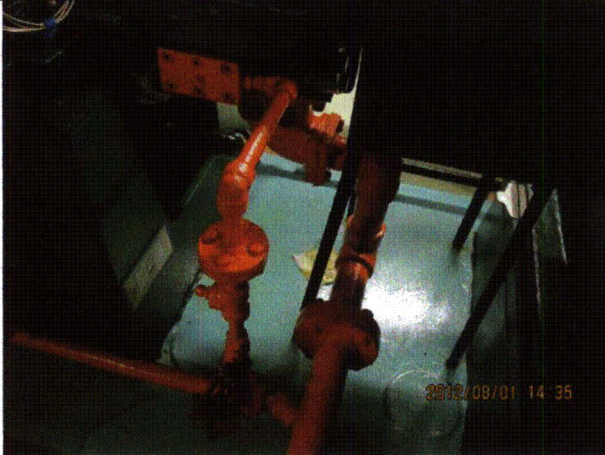
Status: Y N U

Seismic Walkdown Checklist (SWC)

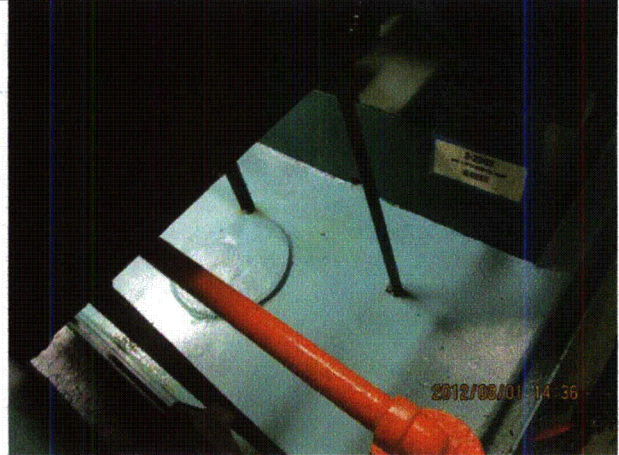
Equipment ID No.: D03-2302-----P30

Equipment Class: (5) Horizontal Pumps

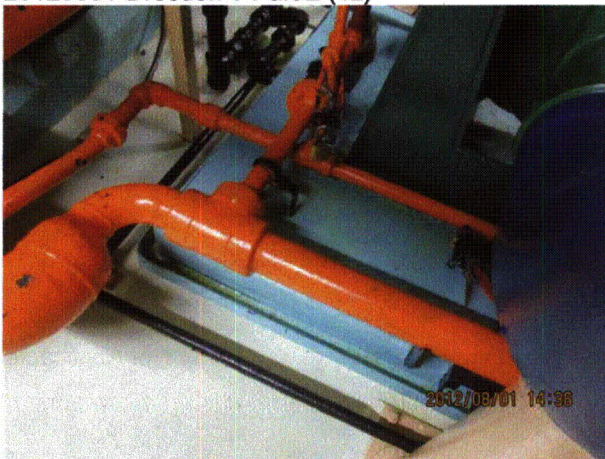
Equipment Description: HPCI/ HPCI Pump



20120801-Dresden-3 Part 2 (42)



20120801-Dresden-3 Part 2 (43)



20120801-Dresden-3 Part 2 (44)

Status: Y N U

Seismic Walkdown Checklist (SWC)

Equipment ID No.: D03-2320-GSCE-F05

Equipment Class: (9) Fans

Equipment Description: HPCI/ Gland Seal Condenser Exhaust Fan

Project: Dresden 3 SWEL

Location (Bldg, Elev, Room/Area): Reactor, 476.50 ft, ALL

Manufacturer/Model:

Instructions for Completing Checklist

This checklist may be used to document the results of the Seismic Walkdown of an item of equipment on the SWEL. The space below each of the following questions may be used to record the results of judgments and findings. Additional space is provided at the end of this checklist for documenting other comments.

Anchorage

1. Is anchorage configuration verification required (i.e., is the item one of the 50% of SWEL items requiring such verification)? Yes

2. Is the anchorage free of bent, broken, missing or loose hardware? Yes

3. Is the anchorage free of corrosion that is more than mild surface oxidation? Yes

4. Is the anchorage free of visible cracks in the concrete near the anchors? Not Applicable
Fan is mounted to condenser.

5. Is the anchorage configuration consistent with plant documentation? (Note: This question only applies if the item is one of the 50% for which an anchorage configuration verification is required.) Yes

6. Based on the above anchorage evaluations, is the anchorage free of potentially adverse seismic conditions? Yes

Status: Y N U

Seismic Walkdown Checklist (SWC)

Equipment ID No.: D03-2320-GSCE-F05

Equipment Class: (9) Fans

Equipment Description: HPCI/ Gland Seal Condenser Exhaust Fan

Interaction Effects

7. Are soft targets free from impact by nearby equipment or structures? Yes
8. Are overhead equipment, distribution systems, ceiling tiles and lighting, and masonry block walls not likely to collapse onto the equipment? Yes
Overhead light fixture with an open S-hook. Fixture has hard-wired cord and will not impact soft targets. Judged to be acceptable. See IR 1396017.
9. Do attached lines have adequate flexibility to avoid damage? Yes
10. Based on the above seismic interaction evaluations, is equipment free of potentially adverse seismic interaction effects? Yes

Other Adverse Conditions

11. Have you looked for and found no adverse seismic conditions that could adversely affect the safety functions of the equipment? Yes

Comments

SEWS Anchorage Notes:

Exhaust fan 2' long and 2' in diameter bolted to a bracket with four 1/2" bolts. The bracket is welded to the condenser with very long fillet welds.

Seismic Walkdown Team: J. Griffith & M. Wodarcyk - 8/1/2012

Evaluated by: James Griffith

Date: 9/30/2012

Michael J. Wodarcyk

Michael Wodarcyk

9/30/2012

Status: Y N U

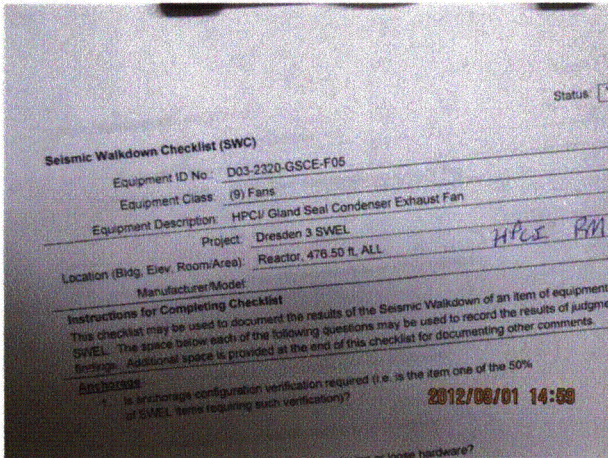
Seismic Walkdown Checklist (SWC)

Equipment ID No.: D03-2320-GSCE-F05

Equipment Class: (9) Fans

Equipment Description: HPCI/ Gland Seal Condenser Exhaust Fan

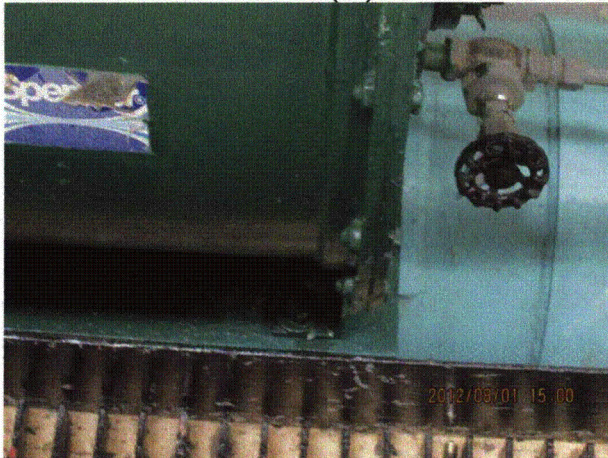
Photos



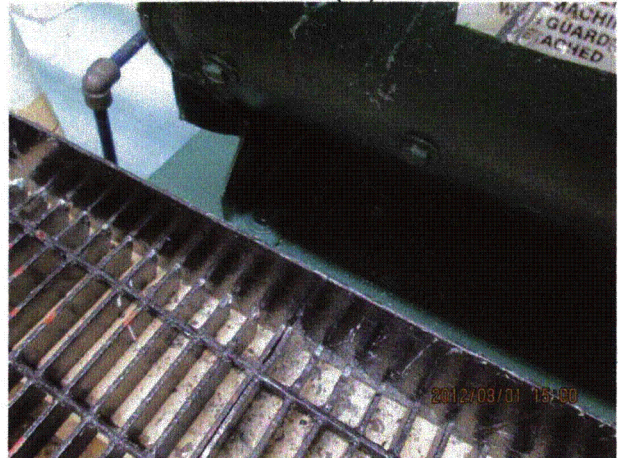
20120801-Dresden-3 Part 2 (73)



20120801-Dresden-3 Part 2 (74)



20120801-Dresden-3 Part 2 (75)



20120801-Dresden-3 Part 2 (76)

Status: Y N U

Seismic Walkdown Checklist (SWC)

Equipment ID No.: D03-2320-GSCE-F05

Equipment Class: (9) Fans

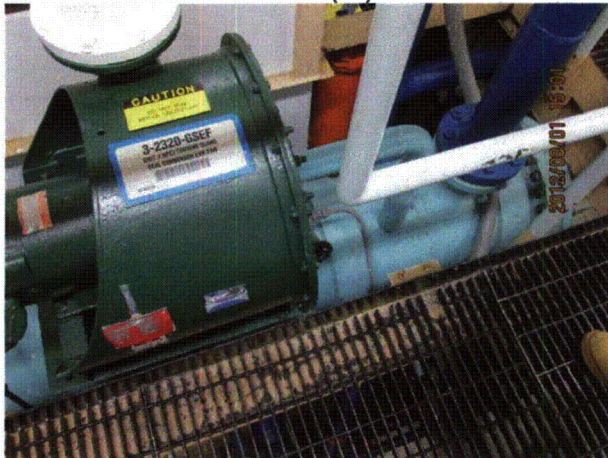
Equipment Description: HPCI/ Gland Seal Condenser Exhaust Fan



20120801-Dresden-3 Part 2 (77)



20120801-Dresden-3 Part 2 (78)



20120801-Dresden-3 Part 2 (79)



20120801-Dresden-3 Part 2 (80)

Status: Y N U

Seismic Walkdown Checklist (SWC)

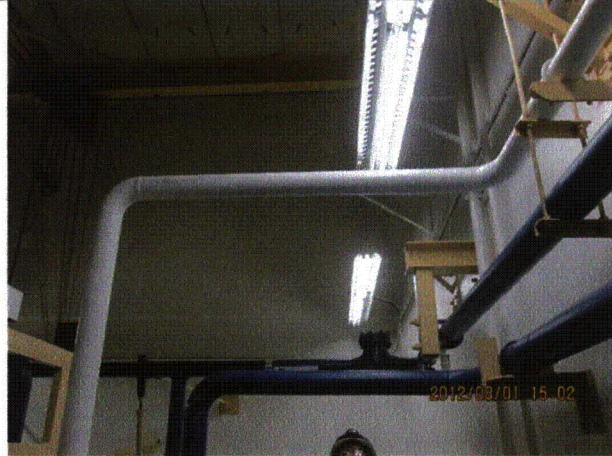
Equipment ID No.: D03-2320-GSCE-F05

Equipment Class: (9) Fans

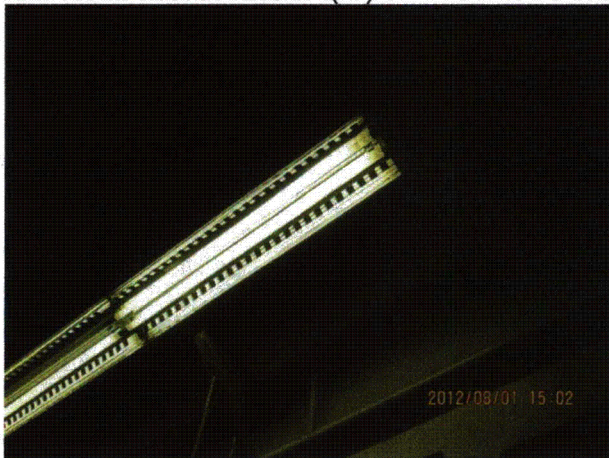
Equipment Description: HPCI/ Gland Seal Condenser Exhaust Fan



20120801-Dresden-3 Part 2 (81)



20120801-Dresden-3 Part 2 (82)



20120801-Dresden-3 Part 2 (83)



20120801-Dresden-3 Part 2 (84)

Status: Y N U

Seismic Walkdown Checklist (SWC)

Equipment ID No.: D03-2320-GSCE-F05

Equipment Class: (9) Fans

Equipment Description: HPCI/ Gland Seal Condenser Exhaust Fan



20120801-Dresden-3 Part 2 (85)



20120801-Dresden-3 Part 2 (86)

Status: Y N U

Seismic Walkdown Checklist (SWC)

Equipment ID No.: D03-2380-----PSH

Equipment Class: (20) Instrumentation and Control Panels and Cabinets

Equipment Description: HPCI/ HPCI Turbine Pressure Switch High

Project: Dresden 3 SWEL

Location (Bldg, Elev, Room/Area): Reactor, 476.50 ft, ALL

Manufacturer/Model:

Instructions for Completing Checklist

This checklist may be used to document the results of the Seismic Walkdown of an item of equipment on the SWEL. The space below each of the following questions may be used to record the results of judgments and findings. Additional space is provided at the end of this checklist for documenting other comments.

Anchorage

1. Is anchorage configuration verification required (i.e., is the item one of the 50% of SWEL items requiring such verification)? No

2. Is the anchorage free of bent, broken, missing or loose hardware? Yes

3. Is the anchorage free of corrosion that is more than mild surface oxidation? Yes

4. Is the anchorage free of visible cracks in the concrete near the anchors? Yes

5. Is the anchorage configuration consistent with plant documentation? (Note: This question only applies if the item is one of the 50% for which an anchorage configuration verification is required.) Not Applicable

6. Based on the above anchorage evaluations, is the anchorage free of potentially adverse seismic conditions? Yes

Status: Y N U

Seismic Walkdown Checklist (SWC)

Equipment ID No.: D03-2380-----PSH

Equipment Class: (20) Instrumentation and Control Panels and Cabinets

Equipment Description: HPCI/ HPCI Turbine Pressure Switch High

Interaction Effects

7. Are soft targets free from impact by nearby equipment or structures? Yes
8. Are overhead equipment, distribution systems, ceiling tiles and lighting, and masonry block walls not likely to collapse onto the equipment? Yes
Overhead light fixture with an open S-hook. Fixture has hard-wired cord and will not impact soft targets. Judged to be acceptable. See IR 1396017.
9. Do attached lines have adequate flexibility to avoid damage? Yes
10. Based on the above seismic interaction evaluations, is equipment free of potentially adverse seismic interaction effects? Yes

Other Adverse Conditions

11. Have you looked for and found no adverse seismic conditions that could adversely affect the safety functions of the equipment? Yes

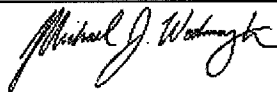
Comments

Seismic Walkdown Team: J. Griffith & M. Wodarczyk - 8/1/2012

Item is mounted on rack 2203-29. Rack also braced to back wall.

Evaluated by:  James Griffith

Date: 9/30/2012



Michael Wodarczyk

9/30/2012

Status: Y N U

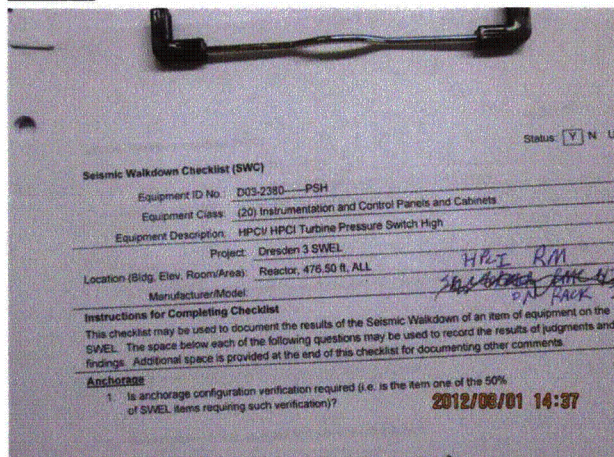
Seismic Walkdown Checklist (SWC)

Equipment ID No.: D03-2380-----PSH

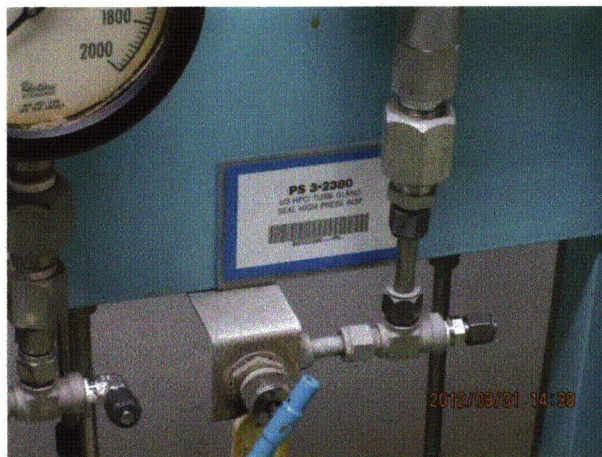
Equipment Class: (20) Instrumentation and Control Panels and Cabinets

Equipment Description: HPCI/ HPCI Turbine Pressure Switch High

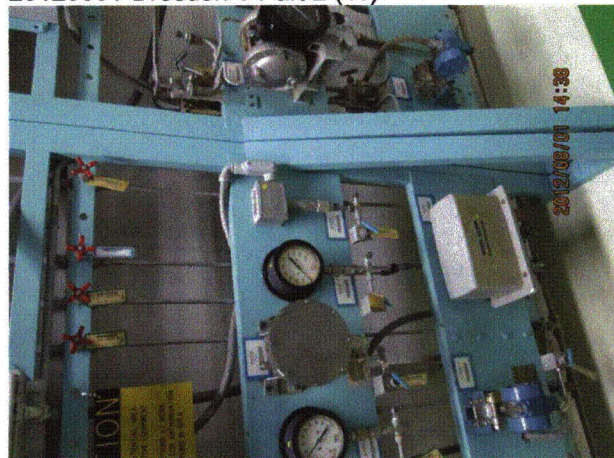
Photos



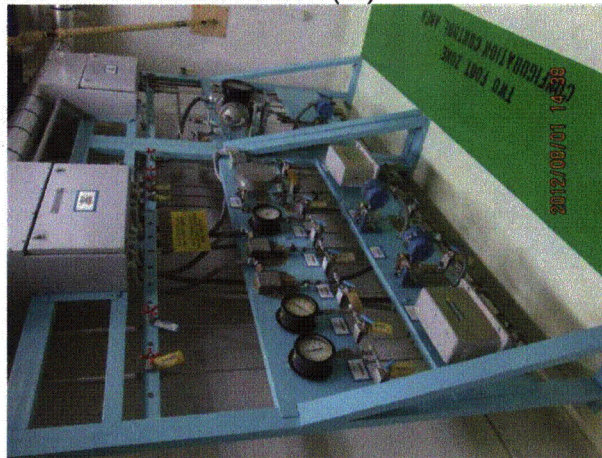
20120801-Dresden-3 Part 2 (45)



20120801-Dresden-3 Part 2 (46)



20120801-Dresden-3 Part 2 (47)



20120801-Dresden-3 Part 2 (48)

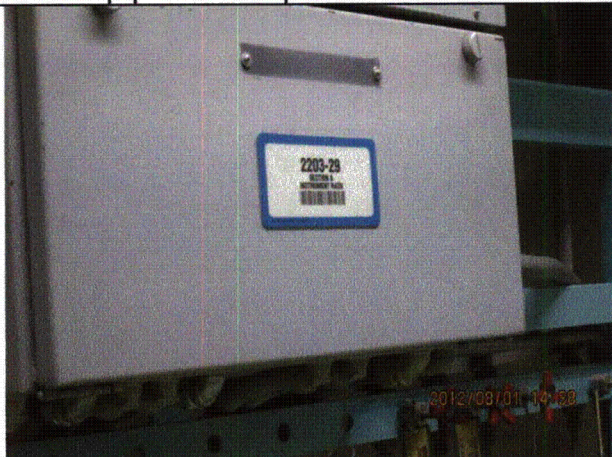
Status: Y N U

Seismic Walkdown Checklist (SWC)

Equipment ID No.: D03-2380-----PSH

Equipment Class: (20) Instrumentation and Control Panels and Cabinets

Equipment Description: HPCI/ HPCI Turbine Pressure Switch High



20120801-Dresden-3 Part 2 (49)



20120801-Dresden-3 Part 2 (50)



20120801-Dresden-3 Part 2 (51)



20120801-Dresden-3 Part 2 (52)

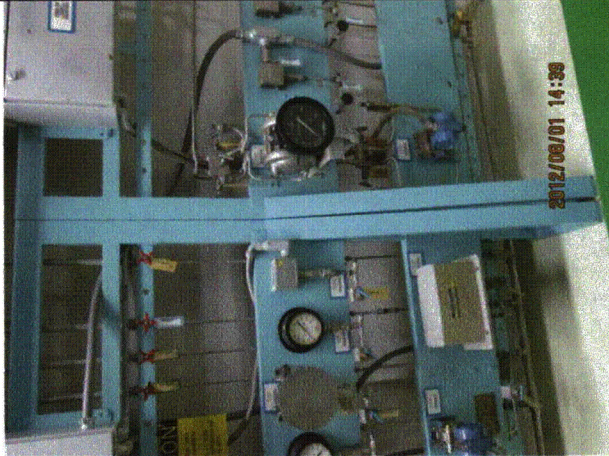
Status: Y N U

Seismic Walkdown Checklist (SWC)

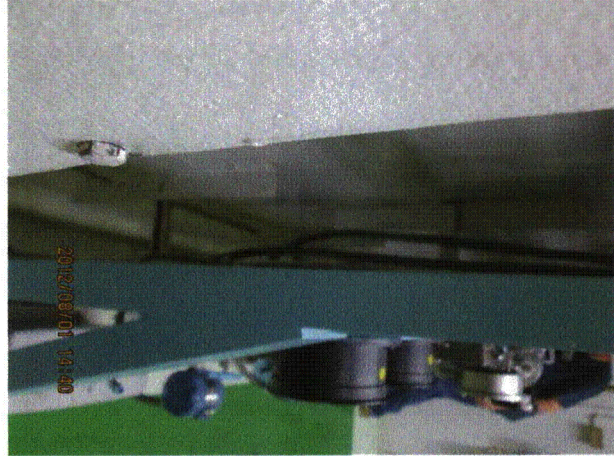
Equipment ID No.: D03-2380-----PSH

Equipment Class: (20) Instrumentation and Control Panels and Cabinets

Equipment Description: HPCI/ HPCI Turbine Pressure Switch High



20120801-Dresden-3 Part 2 (53)



20120801-Dresden-3 Part 2 (54)



20120801-Dresden-3 Part 2 (55)



20120801-Dresden-3 Part 2 (56)

Status: Y N U

Seismic Walkdown Checklist (SWC)

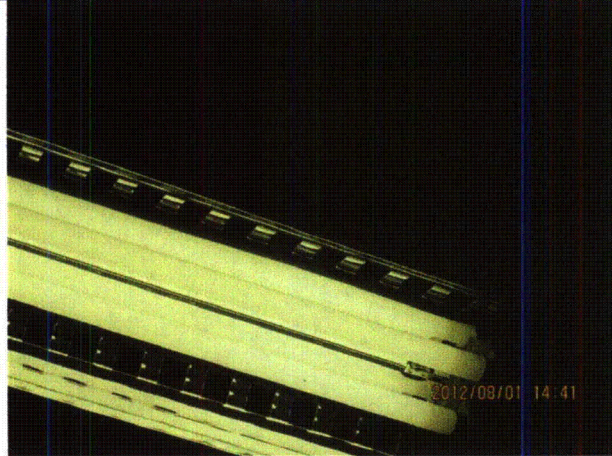
Equipment ID No.: D03-2380-----PSH

Equipment Class: (20) Instrumentation and Control Panels and Cabinets

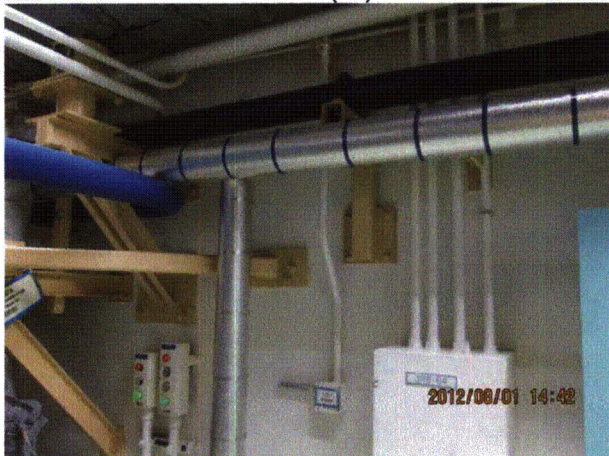
Equipment Description: HPCI/ HPCI Turbine Pressure Switch High



20120801-Dresden-3 Part 2 (57)



20120801-Dresden-3 Part 2 (58)



20120801-Dresden-3 Part 2 (59)



20120801-Dresden-3 Part 2 (60)

Status: Y N U

Seismic Walkdown Checklist (SWC)

Equipment ID No.: D03-2380-----PSH

Equipment Class: (20) Instrumentation and Control Panels and Cabinets

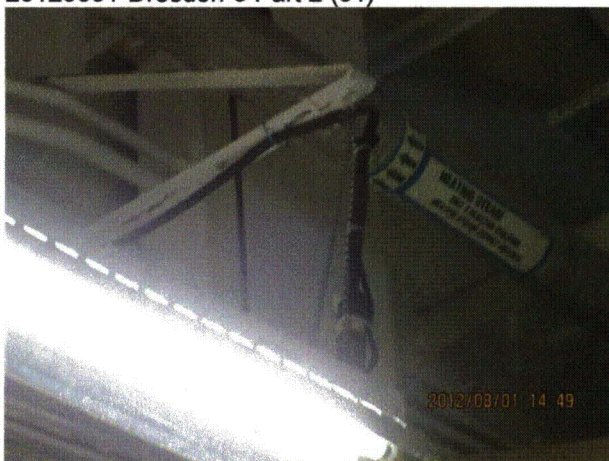
Equipment Description: HPCI/ HPCI Turbine Pressure Switch High



20120801-Dresden-3 Part 2 (61)



20120801-Dresden-3 Part 2 (62)



20120801-Dresden-3 Part 2 (63)



20120801-Dresden-3 Part 2 (64)

Status: Y N U

Seismic Walkdown Checklist (SWC)

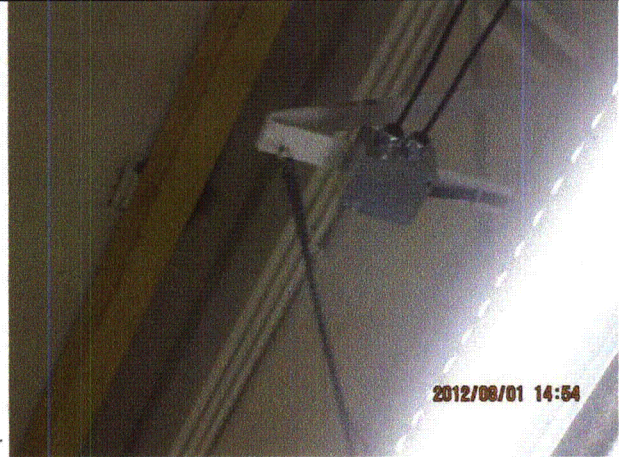
Equipment ID No.: D03-2380-----PSH

Equipment Class: (20) Instrumentation and Control Panels and Cabinets

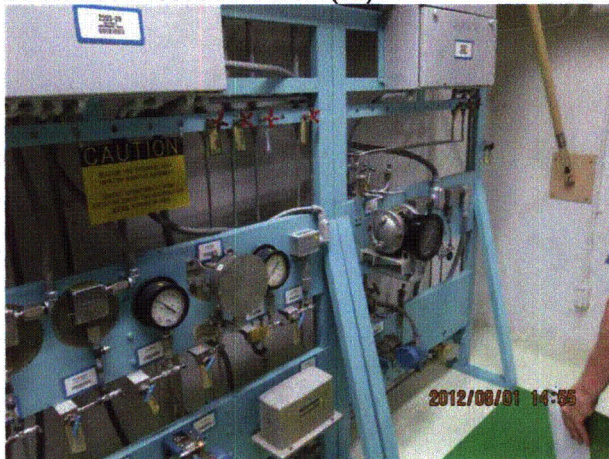
Equipment Description: HPCI/ HPCI Turbine Pressure Switch High



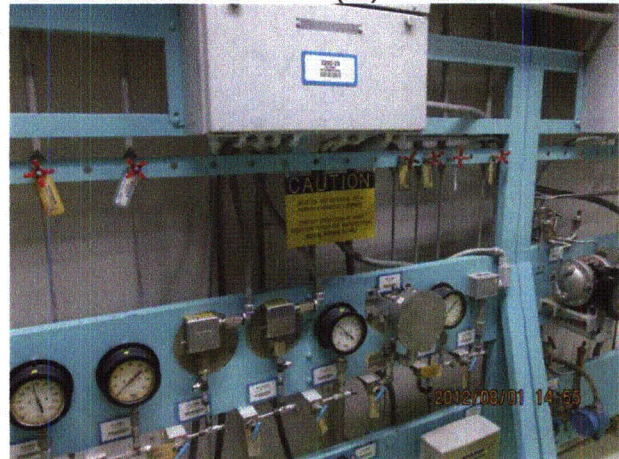
20120801-Dresden-3 Part 2 (65)



20120801-Dresden-3 Part 2 (66)



20120801-Dresden-3 Part 2 (67)



20120801-Dresden-3 Part 2 (68)

Status: Y N U

Seismic Walkdown Checklist (SWC)

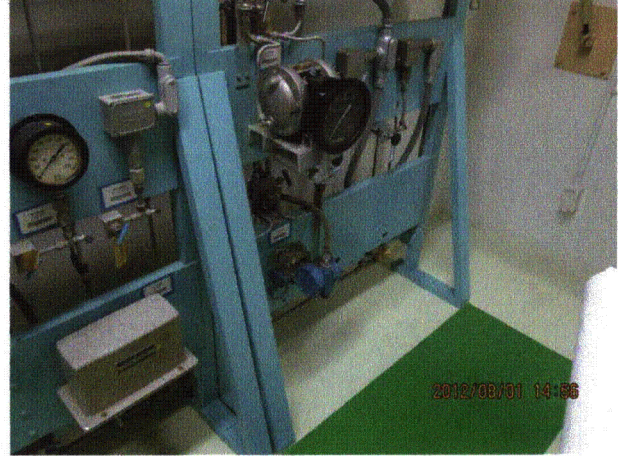
Equipment ID No.: D03-2380-----PSH

Equipment Class: (20) Instrumentation and Control Panels and Cabinets

Equipment Description: HPCI/ HPCI Turbine Pressure Switch High



20120801-Dresden-3 Part 2 (69)



20120801-Dresden-3 Part 2 (70)



20120801-Dresden-3 Part 2 (71)



20120801-Dresden-3 Part 2 (72)