

Status: Y N U

Seismic Walkdown Checklist (SWC)

Equipment ID No.: EGHV101

Equipment Class: (8) Motor-Operated and Solenoid-Operated Valves

Equipment Description: CCW TO RHR HX A ISO

Project: Callaway SWEL

Location (Bldg, Elev, Room/Area): AUX, 2026.00 ft, 1408

Manufacturer/Model:

Instructions for Completing Checklist

This checklist may be used to document the results of the Seismic Walkdown of an item of equipment on the SWEL. The space below each of the following questions may be used to record the results of judgments and findings. Additional space is provided at the end of this checklist for documenting other comments.

Anchorage

1. Is anchorage configuration verification required (i.e., is the item one of the 50% of SWEL items requiring such verification)? No

2. Is the anchorage free of bent, broken, missing or loose hardware? Not Applicable

3. Is the anchorage free of corrosion that is more than mild surface oxidation? Not Applicable

4. Is the anchorage free of visible cracks in the concrete near the anchors? Not Applicable

5. Is the anchorage configuration consistent with plant documentation? (Note: This question only applies if the item is one of the 50% for which an anchorage configuration verification is required.) Not Applicable

6. Based on the above anchorage evaluations, is the anchorage free of potentially adverse seismic conditions? Yes

Status: Y N U

Seismic Walkdown Checklist (SWC)

Equipment ID No.: EGHV101

Equipment Class: (8) Motor-Operated and Solenoid-Operated Valves

Equipment Description: CCW TO RHR HX A ISO

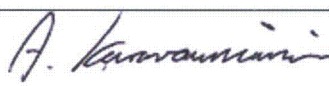
Interaction Effects

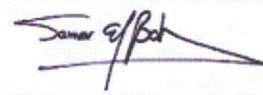
7. Are soft targets free from impact by nearby equipment or structures? Yes
8. Are overhead equipment, distribution systems, ceiling tiles and lighting, and masonry block walls not likely to collapse onto the equipment? Yes
9. Do attached lines have adequate flexibility to avoid damage? Yes
10. Based on the above seismic interaction evaluations, is equipment free of potentially adverse seismic interaction effects? Yes

Other Adverse Conditions

11. Have you looked for and found no adverse seismic conditions that could adversely affect the safety functions of the equipment? Yes

Comments

Evaluated by:  Apostolos Karavoussianis Date: 11/16/2012

 Samer El-Bahey 11/16/2012

Status: Y N U

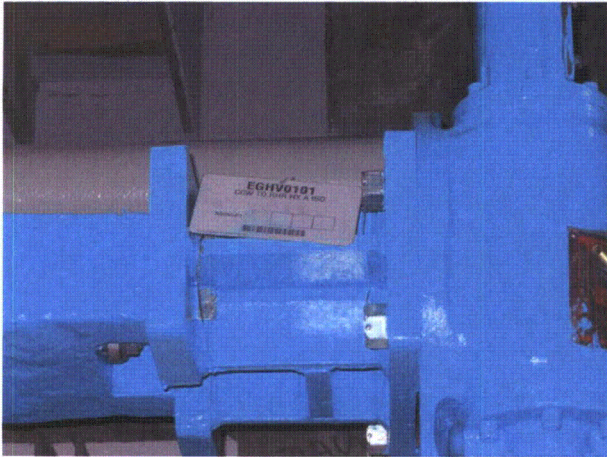
Seismic Walkdown Checklist (SWC)

Equipment ID No.: EGHV101

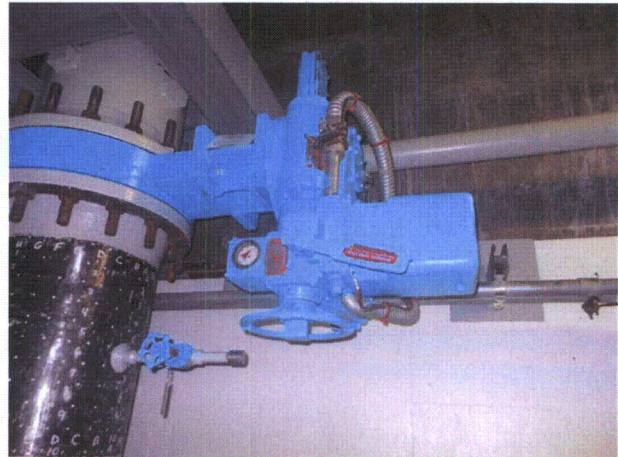
Equipment Class: (8) Motor-Operated and Solenoid-Operated Valves

Equipment Description: CCW TO RHR HX A ISO

Photos



EGHV1010396



EGHV1010397

Status: Y N U

Seismic Walkdown Checklist (SWC)

Equipment ID No.: EJFIS610

Equipment Class: (18) Instruments on Racks

Equipment Description: RHR PMP 1A MINIFLOW CONTROL DISCHARGE

Project: Callaway SWEL

Location (Bldg, Elev, Room/Area): AUX, 2000.00 ft, 1301

Manufacturer/Model: _____

Instructions for Completing Checklist

This checklist may be used to document the results of the Seismic Walkdown of an item of equipment on the SWEL. The space below each of the following questions may be used to record the results of judgments and findings. Additional space is provided at the end of this checklist for documenting other comments.

Anchorage

- | | |
|---|-----|
| 1. Is anchorage configuration verification required (i.e., is the item one of the 50% of SWEL items requiring such verification)? | Yes |
| 2. Is the anchorage free of bent, broken, missing or loose hardware? | Yes |
| 3. Is the anchorage free of corrosion that is more than mild surface oxidation? | Yes |
| 4. Is the anchorage free of visible cracks in the concrete near the anchors? | Yes |
| 5. Is the anchorage configuration consistent with plant documentation? (Note: This question only applies if the item is one of the 50% for which an anchorage configuration verification is required.)
<i>Instrument's mounting frame is bolted to a 6x6 TS and 3x3 angle. The angle is welded to the TS. The TS is anchored to the wall by expansion anchors, typical anchor detail. OK per J-27D26, and J-27G02.</i> | Yes |
| 6. Based on the above anchorage evaluations, is the anchorage free of potentially adverse seismic conditions? | Yes |

Status: Y N U

Seismic Walkdown Checklist (SWC)

Equipment ID No.: EJFIS610

Equipment Class: (18) Instruments on Racks

Equipment Description: RHR PMP 1A MINIFLOW CONTROL DISCHARGE

Interaction Effects

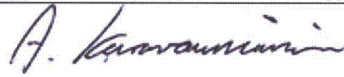
7. Are soft targets free from impact by nearby equipment or structures? Yes
Tubing between EJFIS610 and EJFT618 with 3/16" gap both instruments are anchored to wall, therefore O.K.
8. Are overhead equipment, distribution systems, ceiling tiles and lighting, and masonry block walls not likely to collapse onto the equipment? Yes
9. Do attached lines have adequate flexibility to avoid damage? Yes
10. Based on the above seismic interaction evaluations, is equipment free of potentially adverse seismic interaction effects? Yes

Other Adverse Conditions

11. Have you looked for and found no adverse seismic conditions that could adversely affect the safety functions of the equipment? Yes

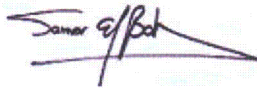
Comments

Evaluated by:



Apostolos Karavoussianis

Date: 11/16/2012



Samer El-Bahey

11/16/2012

Status: Y N U

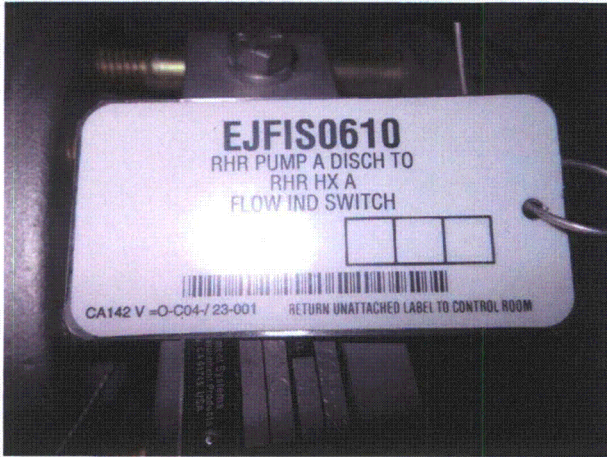
Seismic Walkdown Checklist (SWC)

Equipment ID No.: EJFIS610

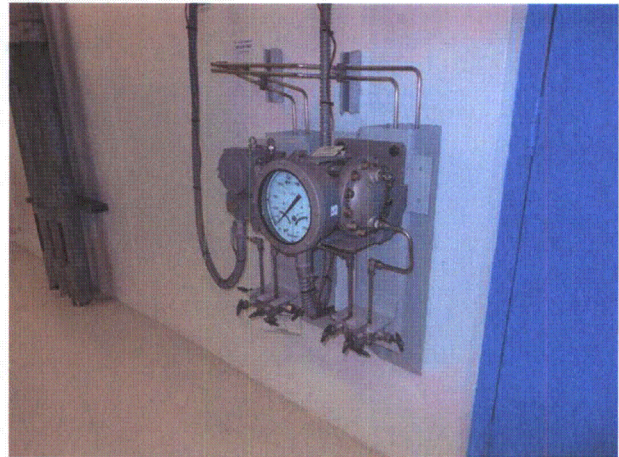
Equipment Class: (18) Instruments on Racks

Equipment Description: RHR PMP 1A MINIFLOW CONTROL DISCHARGE

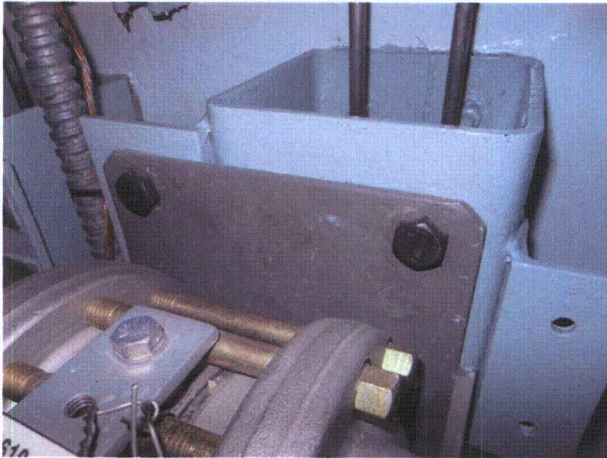
Photos



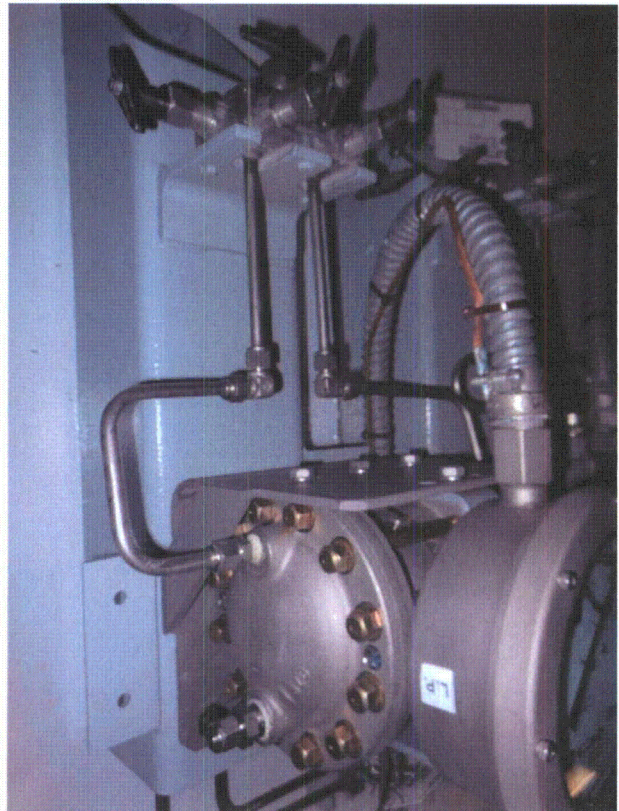
EJFIS6100307



EJFIS6100308



EJFIS6100309



EJFIS6100310

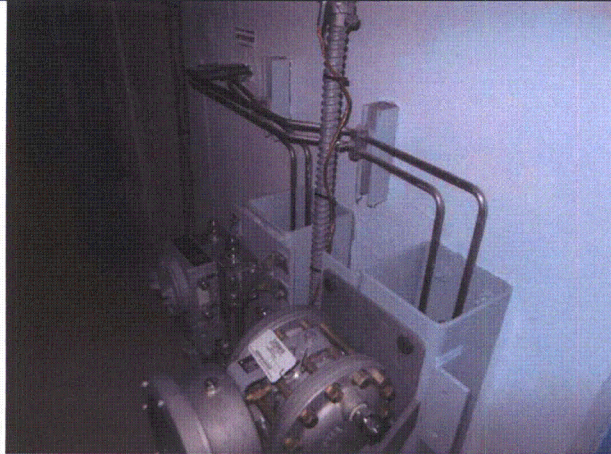
Status: Y N U

Seismic Walkdown Checklist (SWC)

Equipment ID No.: EJFIS610

Equipment Class: (18) Instruments on Racks

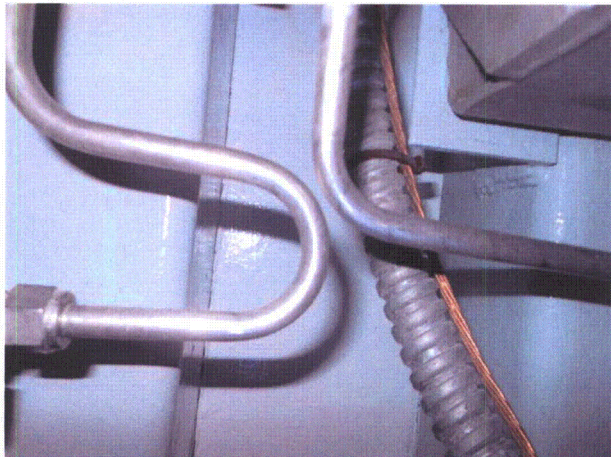
Equipment Description: RHR PMP 1A MINIFLOW CONTROL DISCHARGE



EJFIS6100311



EJFIS6100312



EJFIS6100313

Status: Y N U

Seismic Walkdown Checklist (SWC)

Equipment ID No.: EJHV8809A

Equipment Class: (8) Motor-Operated and Solenoid-Operated Valves

Equipment Description: RHR TO ACCUM INJ LOOPS 1 & 2 ISO VLV

Project: Callaway SWEL

Location (Bldg, Elev, Room/Area): AUX, 2000.00 ft, 1323

Manufacturer/Model:

Instructions for Completing Checklist

This checklist may be used to document the results of the Seismic Walkdown of an item of equipment on the SWEL. The space below each of the following questions may be used to record the results of judgments and findings. Additional space is provided at the end of this checklist for documenting other comments.

Anchorage

- | | |
|--|----------------|
| 1. Is anchorage configuration verification required (i.e., is the item one of the 50% of SWEL items requiring such verification)? | No |
| 2. Is the anchorage free of bent, broken, missing or loose hardware? | Not Applicable |
| 3. Is the anchorage free of corrosion that is more than mild surface oxidation? | Not Applicable |
| 4. Is the anchorage free of visible cracks in the concrete near the anchors? | Not Applicable |
| 5. Is the anchorage configuration consistent with plant documentation? (Note: This question only applies if the item is one of the 50% for which an anchorage configuration verification is required.) | Not Applicable |
| 6. Based on the above anchorage evaluations, is the anchorage free of potentially adverse seismic conditions? | Yes |

Status: Y N U

Seismic Walkdown Checklist (SWC)

Equipment ID No.: EJHV8809A

Equipment Class: (8) Motor-Operated and Solenoid-Operated Valves

Equipment Description: RHR TO ACCUM INJ LOOPS 1 & 2 ISO VLV

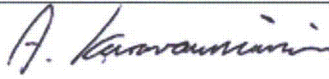
Interaction Effects

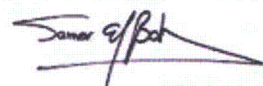
7. Are soft targets free from impact by nearby equipment or structures? Yes
8. Are overhead equipment, distribution systems, ceiling tiles and lighting, and masonry block walls not likely to collapse onto the equipment? Yes
9. Do attached lines have adequate flexibility to avoid damage? Yes
Flex conduit.
10. Based on the above seismic interaction evaluations, is equipment free of potentially adverse seismic interaction effects? Yes

Other Adverse Conditions

11. Have you looked for and found no adverse seismic conditions that could adversely affect the safety functions of the equipment? Yes

Comments

Evaluated by:  Apostolos Karavoussianis Date: 11/16/2012

 Samer El-Bahey 11/16/2012

Status: Y N U

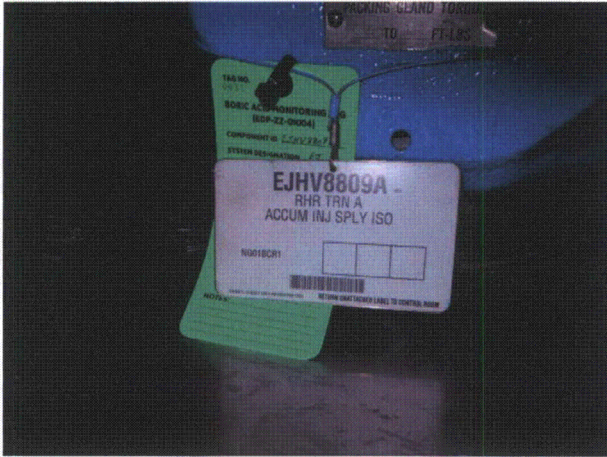
Seismic Walkdown Checklist (SWC)

Equipment ID No.: EJHV8809A

Equipment Class: (8) Motor-Operated and Solenoid-Operated Valves

Equipment Description: RHR TO ACCUM INJ LOOPS 1 & 2 ISO VLV

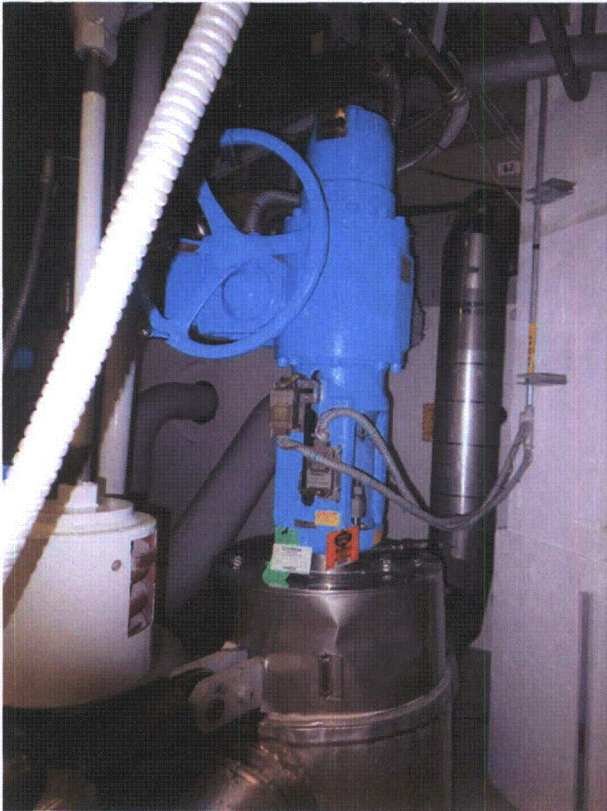
Photos



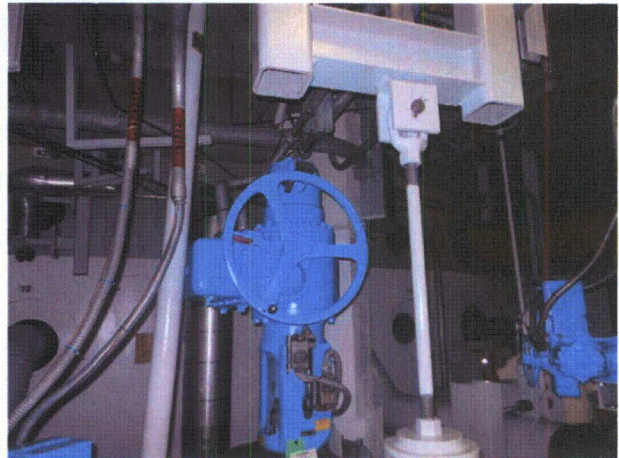
EJHV8809A0331



EJHV8809A0332



EJHV8809A0333



EJHV8809A0334

Status: Y N U

Seismic Walkdown Checklist (SWC)

Equipment ID No.: EKJ03A

Equipment Class: (21) Tanks and Heat Exchangers

Equipment Description: INTERCOOLER HEAT EXCHANGER

Project: Callaway SWEL

Location (Bldg, Elev, Room/Area): DGB, 2000.00 ft, 5203

Manufacturer/Model: _____

Instructions for Completing Checklist

This checklist may be used to document the results of the Seismic Walkdown of an item of equipment on the SWEL. The space below each of the following questions may be used to record the results of judgments and findings. Additional space is provided at the end of this checklist for documenting other comments.

Anchorage

1. Is anchorage configuration verification required (i.e., is the item one of the 50% of SWEL items requiring such verification)? Yes

2. Is the anchorage free of bent, broken, missing or loose hardware? Yes

3. Is the anchorage free of corrosion that is more than mild surface oxidation? Yes

4. Is the anchorage free of visible cracks in the concrete near the anchors? Yes

5. Is the anchorage configuration consistent with plant documentation? (Note: This question only applies if the item is one of the 50% for which an anchorage configuration verification is required.) Yes
OK per C-2C5111, A2325, M-2G051, C-2020, and C-2033.

6. Based on the above anchorage evaluations, is the anchorage free of potentially adverse seismic conditions? Yes

Status: Y N U

Seismic Walkdown Checklist (SWC)

Equipment ID No.: EKJ03A

Equipment Class: (21) Tanks and Heat Exchangers

Equipment Description: INTERCOOLER HEAT EXCHANGER

Interaction Effects

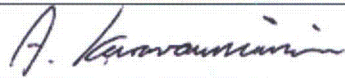
7. Are soft targets free from impact by nearby equipment or structures? Yes
8. Are overhead equipment, distribution systems, ceiling tiles and lighting, and masonry block walls not likely to collapse onto the equipment? Yes
Well supported overhead emergency light with battery.
9. Do attached lines have adequate flexibility to avoid damage? Yes
10. Based on the above seismic interaction evaluations, is equipment free of potentially adverse seismic interaction effects? Yes

Other Adverse Conditions

11. Have you looked for and found no adverse seismic conditions that could adversely affect the safety functions of the equipment? Yes

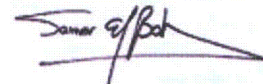
Comments

Evaluated by:



Apostolos Karavoussianis

Date: 11/16/2012



Samer El-Bahey

11/16/2012

Status: Y N U

Seismic Walkdown Checklist (SWC)

Equipment ID No.: EKJ03A

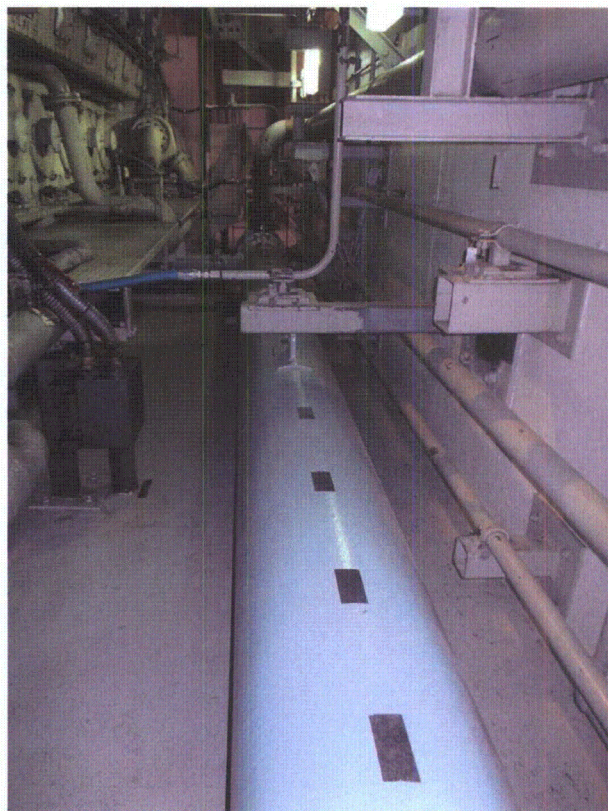
Equipment Class: (21) Tanks and Heat Exchangers

Equipment Description: INTERCOOLER HEAT EXCHANGER

Photos



EKJ03A0189



EKJ03A0190

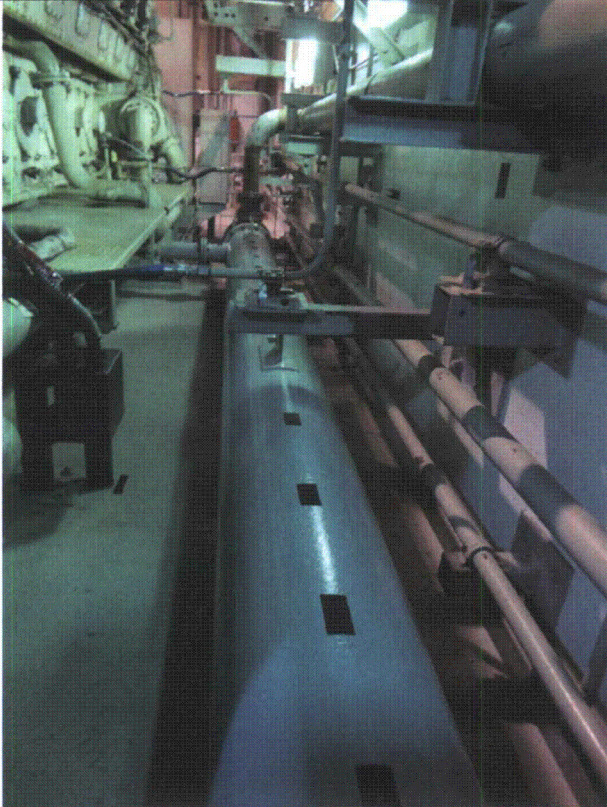
Status: Y N U

Seismic Walkdown Checklist (SWC)

Equipment ID No.: EKJ03A

Equipment Class: (21) Tanks and Heat Exchangers

Equipment Description: INTERCOOLER HEAT EXCHANGER



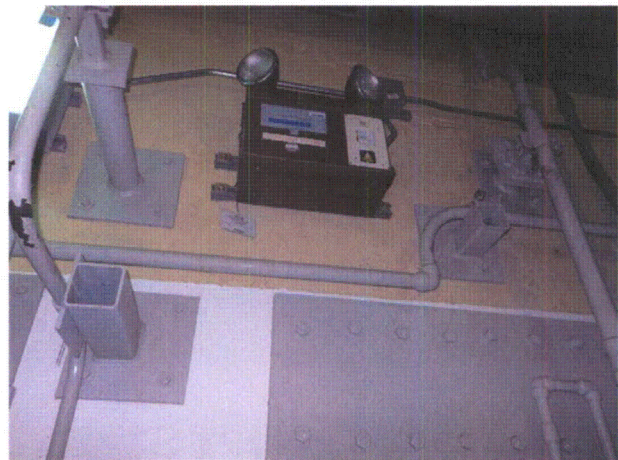
EKJ03A0191



EKJ03A0193



EKJ03A0194



EKJ03A0195

Status: Y N U

Seismic Walkdown Checklist (SWC)

Equipment ID No.: EKJ04A

Equipment Class: (21) Tanks and Heat Exchangers

Equipment Description: LUBE OIL COOLER

Project: Callaway SWEL

Location (Bldg, Elev, Room/Area): DGB, 2000.00 ft, 5203

Manufacturer/Model:

Instructions for Completing Checklist

This checklist may be used to document the results of the Seismic Walkdown of an item of equipment on the SWEL. The space below each of the following questions may be used to record the results of judgments and findings. Additional space is provided at the end of this checklist for documenting other comments.

Anchorage

1. Is anchorage configuration verification required (i.e., is the item one of the 50% of SWEL items requiring such verification)? No

2. Is the anchorage free of bent, broken, missing or loose hardware? Yes
Mounted on Diesel skid (welded).

3. Is the anchorage free of corrosion that is more than mild surface oxidation? Yes

4. Is the anchorage free of visible cracks in the concrete near the anchors? Not Applicable

5. Is the anchorage configuration consistent with plant documentation? (Note: This question only applies if the item is one of the 50% for which an anchorage configuration verification is required.) Not Applicable

6. Based on the above anchorage evaluations, is the anchorage free of potentially adverse seismic conditions? Yes

Status: Y N U

Seismic Walkdown Checklist (SWC)

Equipment ID No.: EKJ04A

Equipment Class: (21) Tanks and Heat Exchangers

Equipment Description: LUBE OIL COOLER

Interaction Effects

7. Are soft targets free from impact by nearby equipment or structures? Yes

One support is notched to avoid contact with heat exchanger.

8. Are overhead equipment, distribution systems, ceiling tiles and lighting, and masonry block walls not likely to collapse onto the equipment? Yes

9. Do attached lines have adequate flexibility to avoid damage? Yes

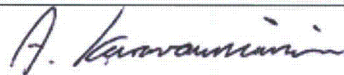
10. Based on the above seismic interaction evaluations, is equipment free of potentially adverse seismic interaction effects? Yes

Other Adverse Conditions

11. Have you looked for and found no adverse seismic conditions that could adversely affect the safety functions of the equipment? Yes

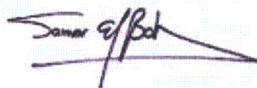
Comments

Evaluated by:



Apostolos Karavoussianis

Date: 11/16/2012



Samer El-Bahey

11/16/2012

Status: Y N U

Seismic Walkdown Checklist (SWC)

Equipment ID No.: EKJ04A

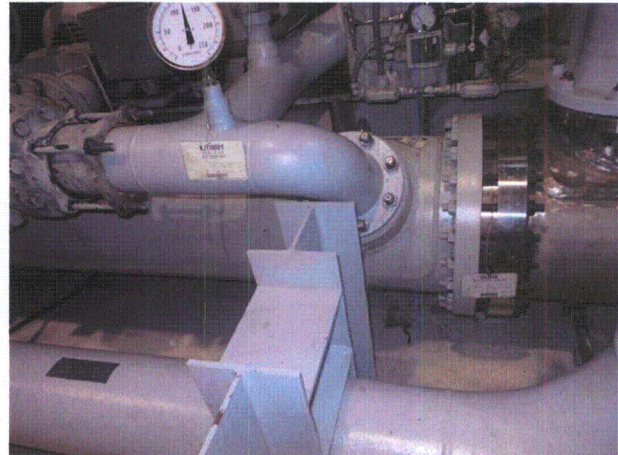
Equipment Class: (21) Tanks and Heat Exchangers

Equipment Description: LUBE OIL COOLER

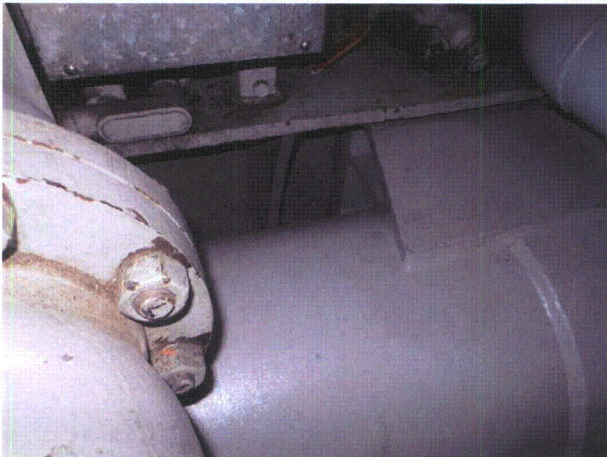
Photos



EKJ04A0157



EKJ04A0158



EKJ04A0159



EKJ04A0160

Status: Y N U

Seismic Walkdown Checklist (SWC)

Equipment ID No.: EKJ06A

Equipment Class: (21) Tanks and Heat Exchangers

Equipment Description: DIESEL JACKET WATER HEAT EXCHANGER

Project: Callaway SWEL

Location (Bldg, Elev, Room/Area): DGB, 2000.00 ft, 5203

Manufacturer/Model:

Instructions for Completing Checklist

This checklist may be used to document the results of the Seismic Walkdown of an item of equipment on the SWEL. The space below each of the following questions may be used to record the results of judgments and findings. Additional space is provided at the end of this checklist for documenting other comments.

Anchorage

1. Is anchorage configuration verification required (i.e., is the item one of the 50% of SWEL items requiring such verification)? No

2. Is the anchorage free of bent, broken, missing or loose hardware? Yes
One bolt is threaded less than flush, no concern.

3. Is the anchorage free of corrosion that is more than mild surface oxidation? Yes

4. Is the anchorage free of visible cracks in the concrete near the anchors? Not Applicable

5. Is the anchorage configuration consistent with plant documentation? (Note: This question only applies if the item is one of the 50% for which an anchorage configuration verification is required.) Not Applicable

6. Based on the above anchorage evaluations, is the anchorage free of potentially adverse seismic conditions? Yes

Status: Y N U

Seismic Walkdown Checklist (SWC)

Equipment ID No.: EKJ06A

Equipment Class: (21) Tanks and Heat Exchangers

Equipment Description: DIESEL JACKET WATER HEAT EXCHANGER

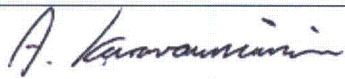
Interaction Effects

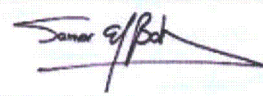
7. Are soft targets free from impact by nearby equipment or structures? Yes
Up against a support leg but it is very rigid to move, not a seismic concern.
8. Are overhead equipment, distribution systems, ceiling tiles and lighting, and masonry block walls not likely to collapse onto the equipment? Yes
9. Do attached lines have adequate flexibility to avoid damage? Yes
10. Based on the above seismic interaction evaluations, is equipment free of potentially adverse seismic interaction effects? Yes

Other Adverse Conditions

11. Have you looked for and found no adverse seismic conditions that could adversely affect the safety functions of the equipment? Yes

Comments

Evaluated by:  Apostolos Karavoussianis Date: 11/16/2012

 Samer El-Bahey 11/16/2012

Status: Y N U

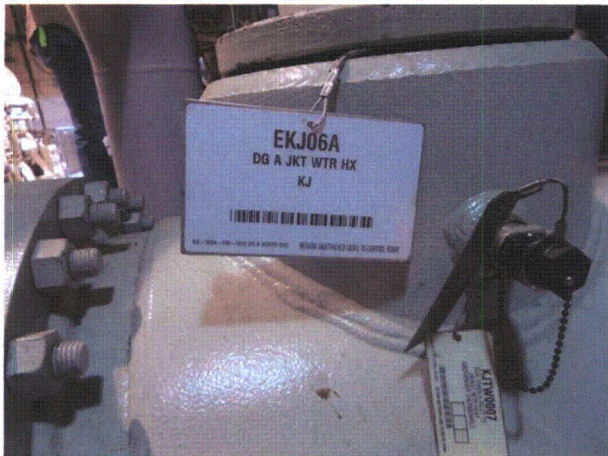
Seismic Walkdown Checklist (SWC)

Equipment ID No.: EKJ06A

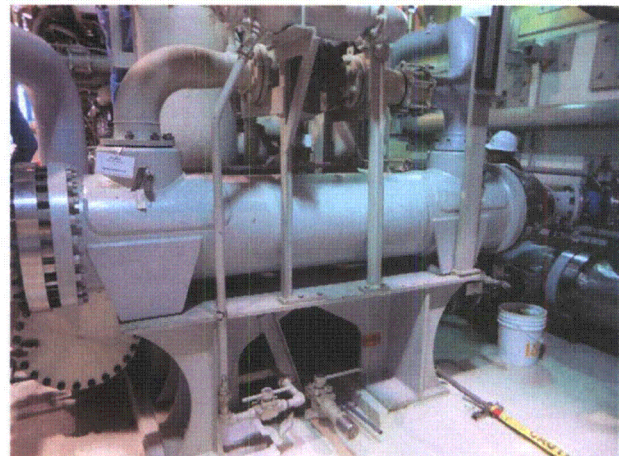
Equipment Class: (21) Tanks and Heat Exchangers

Equipment Description: DIESEL JACKET WATER HEAT EXCHANGER

Photos



EKJ06A0152



EKJ06A0153



EKJ06A0154



EKJ06A0155

Status: Y N U

Seismic Walkdown Checklist (SWC)

Equipment ID No.: EKJ06A

Equipment Class: (21) Tanks and Heat Exchangers

Equipment Description: DIESEL JACKET WATER HEAT EXCHANGER



EKJ06A0156

Status: Y N U

Seismic Walkdown Checklist (SWC)

Equipment ID No.: EMFT917A

Equipment Class: (18) Instruments on Racks

Equipment Description: CCP A TO BIT FLOW TRANSMITTER

Project: Callaway SWEL

Location (Bldg, Elev, Room/Area): AUX, 1974.00 ft, 1126

Manufacturer/Model:

Instructions for Completing Checklist

This checklist may be used to document the results of the Seismic Walkdown of an item of equipment on the SWEL. The space below each of the following questions may be used to record the results of judgments and findings. Additional space is provided at the end of this checklist for documenting other comments.

Anchorage

1. Is anchorage configuration verification required (i.e., is the item one of the 50% of SWEL items requiring such verification)? Yes

2. Is the anchorage free of bent, broken, missing or loose hardware? Yes

3. Is the anchorage free of corrosion that is more than mild surface oxidation? Yes

4. Is the anchorage free of visible cracks in the concrete near the anchors? Yes

5. Is the anchorage configuration consistent with plant documentation? (Note: This question only applies if the item is one of the 50% for which an anchorage configuration verification is required.) Yes
Transmitter is mounted to a tube stanchion by 4 bolts and the stanchion is anchored to the concrete wall via the standard 3/8" bolting. OK per J-27D01, J-27G22, and J-27G02.

6. Based on the above anchorage evaluations, is the anchorage free of potentially adverse seismic conditions? Yes

Status: Y N U

Seismic Walkdown Checklist (SWC)

Equipment ID No.: EMFT917A

Equipment Class: (18) Instruments on Racks

Equipment Description: CCP A TO BIT FLOW TRANSMITTER

Interaction Effects

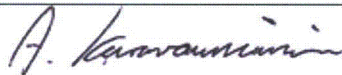
7. Are soft targets free from impact by nearby equipment or structures? Yes
Nearby pipe with adequate gap.
8. Are overhead equipment, distribution systems, ceiling tiles and lighting, and masonry block walls not likely to collapse onto the equipment? Yes
Overhead emergency light is adequately anchored to wall.
9. Do attached lines have adequate flexibility to avoid damage? Yes
Flex conduit and tubing attached to some mounting structure.
10. Based on the above seismic interaction evaluations, is equipment free of potentially adverse seismic interaction effects? Yes

Other Adverse Conditions

11. Have you looked for and found no adverse seismic conditions that could adversely affect the safety functions of the equipment? Yes

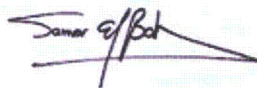
Comments

Evaluated by:



Apostolos Karavoussianis

Date: 11/16/2012



Samer El-Bahey

11/16/2012

Status: Y N U

Seismic Walkdown Checklist (SWC)

Equipment ID No.: EMFT917A

Equipment Class: (18) Instruments on Racks

Equipment Description: CCP A TO BIT FLOW TRANSMITTER

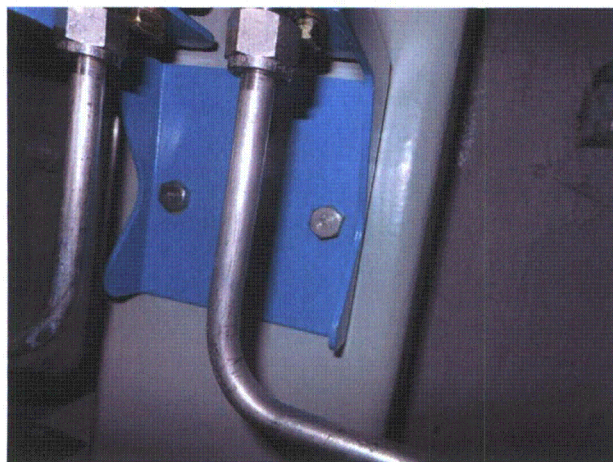
Photos



EMFT917A0297



EMFT917A0298



EMFT917A0299



EMFT917A0300

Status: Y N U

Seismic Walkdown Checklist (SWC)

Equipment ID No.: EMHV8814A

Equipment Class: (8) Motor-Operated and Solenoid-Operated Valves

Equipment Description: SI PUMP A RETURN TO RWST ISO VLV

Project: Callaway SWEL

Location (Bldg, Elev, Room/Area): AUX, 1974.00 ft, 1113

Manufacturer/Model: _____

Instructions for Completing Checklist

This checklist may be used to document the results of the Seismic Walkdown of an item of equipment on the SWEL. The space below each of the following questions may be used to record the results of judgments and findings. Additional space is provided at the end of this checklist for documenting other comments.

Anchorage

- | | |
|--|----------------|
| 1. Is anchorage configuration verification required (i.e., is the item one of the 50% of SWEL items requiring such verification)? | No |
| 2. Is the anchorage free of bent, broken, missing or loose hardware? | Not Applicable |
| 3. Is the anchorage free of corrosion that is more than mild surface oxidation? | Not Applicable |
| 4. Is the anchorage free of visible cracks in the concrete near the anchors? | Not Applicable |
| 5. Is the anchorage configuration consistent with plant documentation? (Note: This question only applies if the item is one of the 50% for which an anchorage configuration verification is required.) | Not Applicable |
| 6. Based on the above anchorage evaluations, is the anchorage free of potentially adverse seismic conditions? | Yes |

Status: Y N U

Seismic Walkdown Checklist (SWC)

Equipment ID No.: EMHV8814A

Equipment Class: (8) Motor-Operated and Solenoid-Operated Valves

Equipment Description: SI PUMP A RETURN TO RWST ISO VLV

Interaction Effects

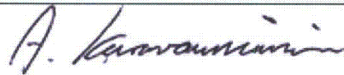
7. Are soft targets free from impact by nearby equipment or structures? Yes
8. Are overhead equipment, distribution systems, ceiling tiles and lighting, and masonry block walls not likely to collapse onto the equipment? Yes
9. Do attached lines have adequate flexibility to avoid damage? Yes
10. Based on the above seismic interaction evaluations, is equipment free of potentially adverse seismic interaction effects? Yes

Other Adverse Conditions

11. Have you looked for and found no adverse seismic conditions that could adversely affect the safety functions of the equipment? Yes

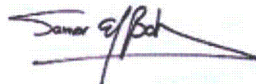
Comments

Evaluated by:



Apostolos Karavoussianis

Date: 11/16/2012



Samer El-Bahey

11/16/2012

Status: Y N U

Seismic Walkdown Checklist (SWC)

Equipment ID No.: EMHV8814A

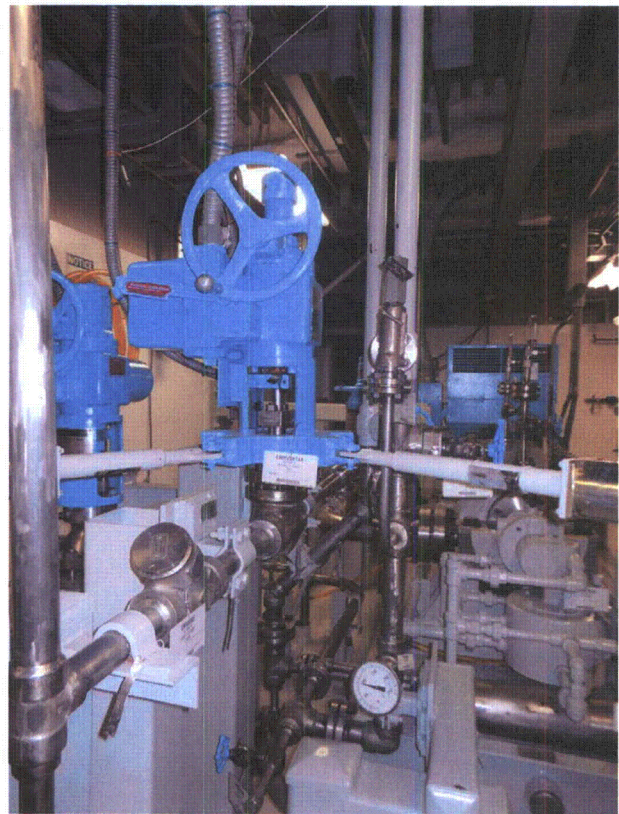
Equipment Class: (8) Motor-Operated and Solenoid-Operated Valves

Equipment Description: SI PUMP A RETURN TO RWST ISO VLV

Photos



EMHV8814A0274



EMHV8814A0275

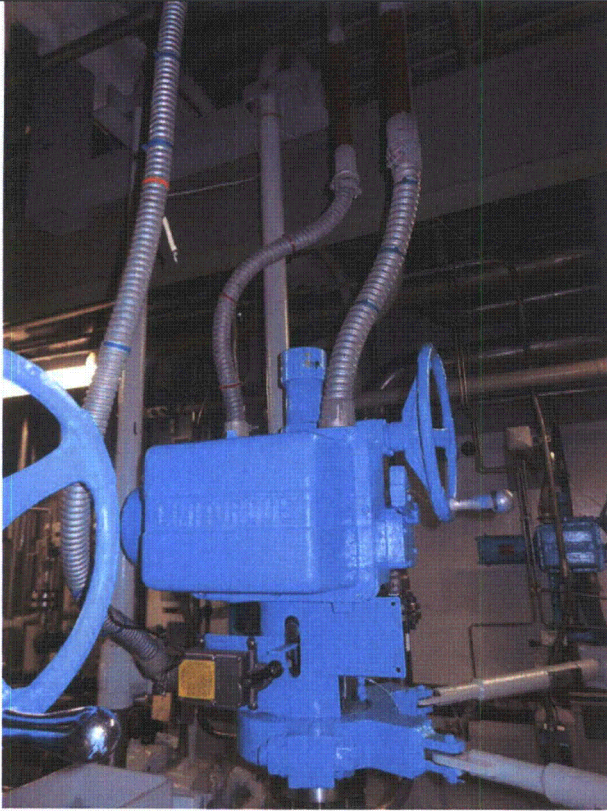
Status: Y N U

Seismic Walkdown Checklist (SWC)

Equipment ID No.: EMHV8814A

Equipment Class: (8) Motor-Operated and Solenoid-Operated Valves

Equipment Description: SI PUMP A RETURN TO RWST ISO VLV



EMHV8814A0276

Status: Y N U

Seismic Walkdown Checklist (SWC)

Equipment ID No.: EMHV8923A

Equipment Class: (8) Motor-Operated and Solenoid-Operated Valves

Equipment Description: SAFETY INJECTION PUMP A SUCT ISO VALVE

Project: Callaway SWEL

Location (Bldg, Elev, Room/Area): AUX, 1974.00 ft, 1113

Manufacturer/Model:

Instructions for Completing Checklist

This checklist may be used to document the results of the Seismic Walkdown of an item of equipment on the SWEL. The space below each of the following questions may be used to record the results of judgments and findings. Additional space is provided at the end of this checklist for documenting other comments.

Anchorage

1. Is anchorage configuration verification required (i.e., is the item one of the 50% of SWEL items requiring such verification)? No

2. Is the anchorage free of bent, broken, missing or loose hardware? Not Applicable

3. Is the anchorage free of corrosion that is more than mild surface oxidation? Not Applicable

4. Is the anchorage free of visible cracks in the concrete near the anchors? Not Applicable

5. Is the anchorage configuration consistent with plant documentation? (Note: This question only applies if the item is one of the 50% for which an anchorage configuration verification is required.) Not Applicable

6. Based on the above anchorage evaluations, is the anchorage free of potentially adverse seismic conditions? Yes

Status: Y N U

Seismic Walkdown Checklist (SWC)

Equipment ID No.: EMHV8923A

Equipment Class: (8) Motor-Operated and Solenoid-Operated Valves

Equipment Description: SAFETY INJECTION PUMP A SUCT ISO VALVE

Interaction Effects

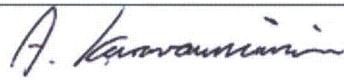
7. Are soft targets free from impact by nearby equipment or structures? Yes
8. Are overhead equipment, distribution systems, ceiling tiles and lighting, and masonry block walls not likely to collapse onto the equipment? Yes
9. Do attached lines have adequate flexibility to avoid damage? Yes
10. Based on the above seismic interaction evaluations, is equipment free of potentially adverse seismic interaction effects? Yes

Other Adverse Conditions

11. Have you looked for and found no adverse seismic conditions that could adversely affect the safety functions of the equipment? Yes

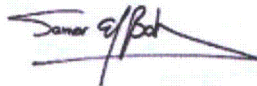
Comments

Evaluated by:



Apostolos Karavoussianis

Date: 11/16/2012



Samer El-Bahey

11/16/2012

Status: Y N U

Seismic Walkdown Checklist (SWC)

Equipment ID No.: EMHV8923A

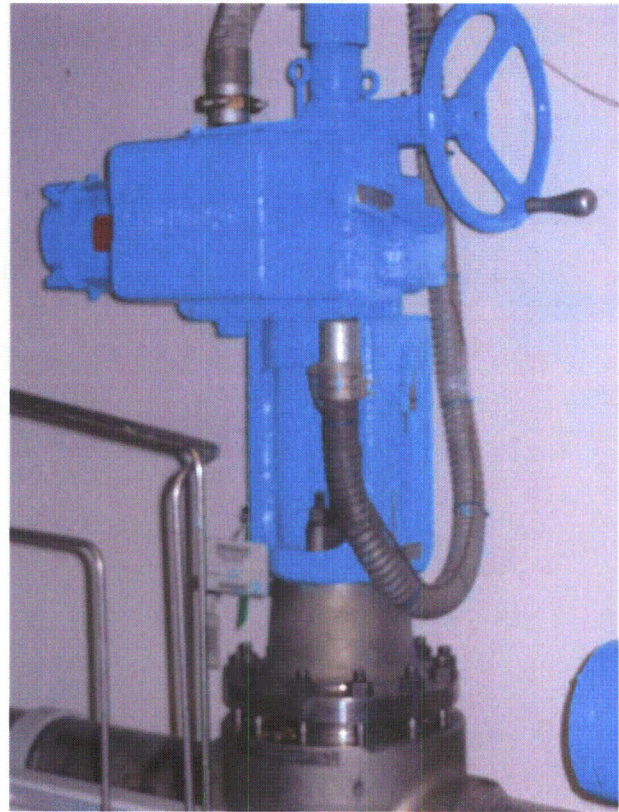
Equipment Class: (8) Motor-Operated and Solenoid-Operated Valves

Equipment Description: SAFETY INJECTION PUMP A SUCT ISO VALVE

Photos



EMHV8923A0277



EMHV8923A0278

Status: Y N U

Seismic Walkdown Checklist (SWC)

Equipment ID No.: EMHV8923A

Equipment Class: (8) Motor-Operated and Solenoid-Operated Valves

Equipment Description: SAFETY INJECTION PUMP A SUCT ISO VALVE



EMHV8923A0279

Status: Y N U

Seismic Walkdown Checklist (SWC)

Equipment ID No.: FEF02A

Equipment Class: (0) Other

Equipment Description: ESW SELF-CLEANING STRAINER (MTR OP.-IN MOV PROG.)

Project: Callaway SWEL

Location (Bldg, Elev, Room/Area): ESW, 2000.00 ft, U104

Manufacturer/Model:

Instructions for Completing Checklist

This checklist may be used to document the results of the Seismic Walkdown of an item of equipment on the SWEL. The space below each of the following questions may be used to record the results of judgments and findings. Additional space is provided at the end of this checklist for documenting other comments.

Anchorage

1. Is anchorage configuration verification required (i.e., is the item one of the 50% of SWEL items requiring such verification)? Yes

2. Is the anchorage free of bent, broken, missing or loose hardware? Yes

3. Is the anchorage free of corrosion that is more than mild surface oxidation? Yes

4. Is the anchorage free of visible cracks in the concrete near the anchors? Yes

5. Is the anchorage configuration consistent with plant documentation? (Note: This question only applies if the item is one of the 50% for which an anchorage configuration verification is required.) Yes
OK per M-UG080, C-UC301, C-UC305.

6. Based on the above anchorage evaluations, is the anchorage free of potentially adverse seismic conditions? Yes

Status: Y N U

Seismic Walkdown Checklist (SWC)

Equipment ID No.: FEF02A

Equipment Class: (0) Other

Equipment Description: ESW SELF-CLEANING STRAINER (MTR OP.-IN MOV PROG.)

Interaction Effects

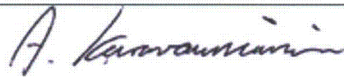
7. Are soft targets free from impact by nearby equipment or structures? Yes
Fan above is well supported on cantilevered W-Section to wall.
8. Are overhead equipment, distribution systems, ceiling tiles and lighting, and masonry block walls not likely to collapse onto the equipment? Yes
Light above has two screws that are not engaged properly, not a seismic concern but may fall and enter in a system. CAR 201206498 and Job 12004809 are initiated.
9. Do attached lines have adequate flexibility to avoid damage? Yes
10. Based on the above seismic interaction evaluations, is equipment free of potentially adverse seismic interaction effects? Yes

Other Adverse Conditions

11. Have you looked for and found no adverse seismic conditions that could adversely affect the safety functions of the equipment? Yes

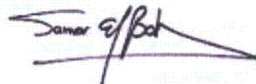
Comments

Evaluated by:



Apostolos Karavoussianis

Date: 11/16/2012



Samer El-Bahey

11/16/2012

Status: Y N U

Seismic Walkdown Checklist (SWC)

Equipment ID No.: FEF02A

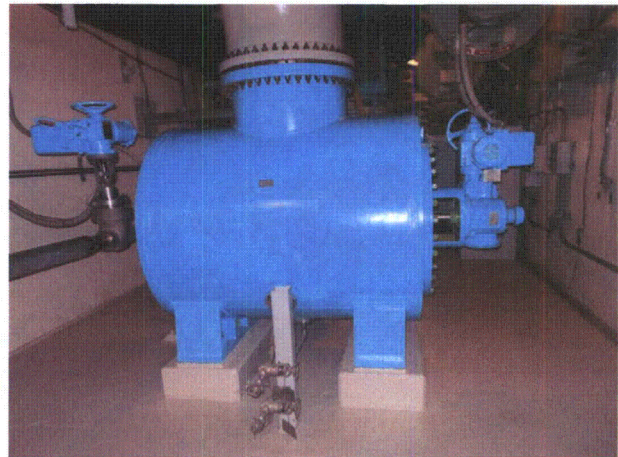
Equipment Class: (0) Other

Equipment Description: ESW SELF-CLEANING STRAINER (MTR OP.-IN MOV PROG.)

Photos



FEF02A0097



FEF02A0098



FEF02A0099



FEF02A0100

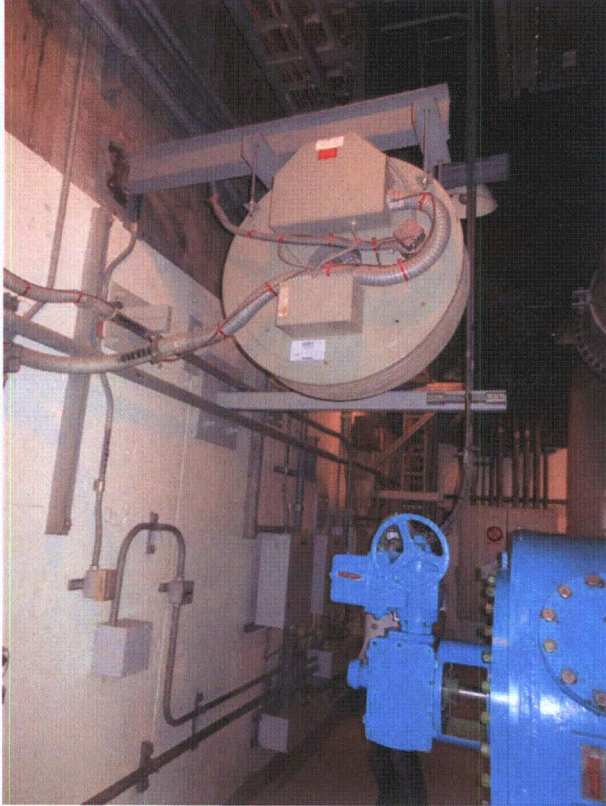
Status: Y N U

Seismic Walkdown Checklist (SWC)

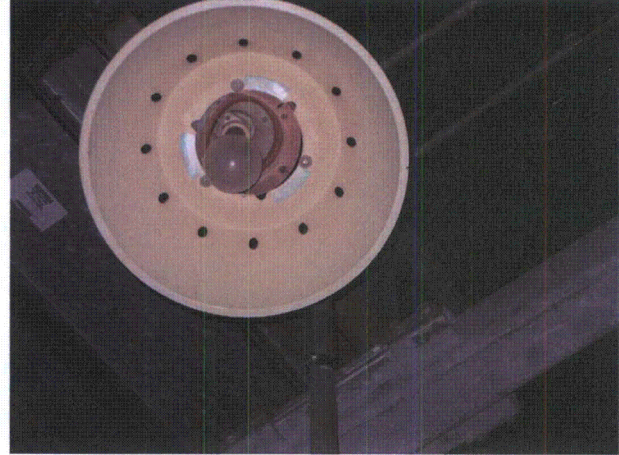
Equipment ID No.: FEF02A

Equipment Class: (0) Other

Equipment Description: ESW SELF-CLEANING STRAINER (MTR OP.-IN MOV PROG.)



FEF02A0101



FEF02A0102

Status: Y N U

Seismic Walkdown Checklist (SWC)

Equipment ID No.: GMD0001

Equipment Class: (0) Other

Equipment Description: DG VENT SPLY FAN A SUCT OUT AIR BACKDRAFT DMPR

Project: Callaway SWEL

Location (Bldg, Elev, Room/Area): DGB, 2000.00 ft, 5203

Manufacturer/Model:

Instructions for Completing Checklist

This checklist may be used to document the results of the Seismic Walkdown of an item of equipment on the SWEL. The space below each of the following questions may be used to record the results of judgments and findings. Additional space is provided at the end of this checklist for documenting other comments.

Anchorage

1. Is anchorage configuration verification required (i.e., is the item one of the 50% of SWEL items requiring such verification)? No

2. Is the anchorage free of bent, broken, missing or loose hardware? Not Applicable

3. Is the anchorage free of corrosion that is more than mild surface oxidation? Not Applicable

4. Is the anchorage free of visible cracks in the concrete near the anchors? Not Applicable

5. Is the anchorage configuration consistent with plant documentation? (Note: This question only applies if the item is one of the 50% for which an anchorage configuration verification is required.) Not Applicable

6. Based on the above anchorage evaluations, is the anchorage free of potentially adverse seismic conditions? Yes

Status: Y N U

Seismic Walkdown Checklist (SWC)

Equipment ID No.: GMD0001

Equipment Class: (0) Other

Equipment Description: DG VENT SPLY FAN A SUCT OUT AIR BACKDRAFT DMPR

Interaction Effects

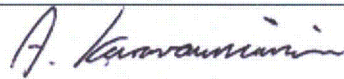
7. Are soft targets free from impact by nearby equipment or structures? Yes
8. Are overhead equipment, distribution systems, ceiling tiles and lighting, and masonry block walls not likely to collapse onto the equipment? Yes
9. Do attached lines have adequate flexibility to avoid damage? Yes
10. Based on the above seismic interaction evaluations, is equipment free of potentially adverse seismic interaction effects? Yes

Other Adverse Conditions

11. Have you looked for and found no adverse seismic conditions that could adversely affect the safety functions of the equipment? Yes

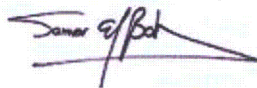
Comments

Evaluated by:



Apostolos Karavoussianis

Date: 11/16/2012



Samer El-Bahey

11/16/2012

Status: Y N U

Seismic Walkdown Checklist (SWC)

Equipment ID No.: GMD0001

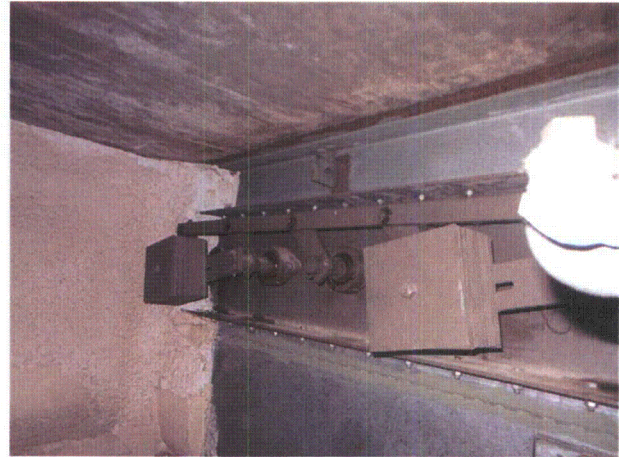
Equipment Class: (0) Other

Equipment Description: DG VENT SPLY FAN A SUCT OUT AIR BACKDRAFT DMPR

Photos



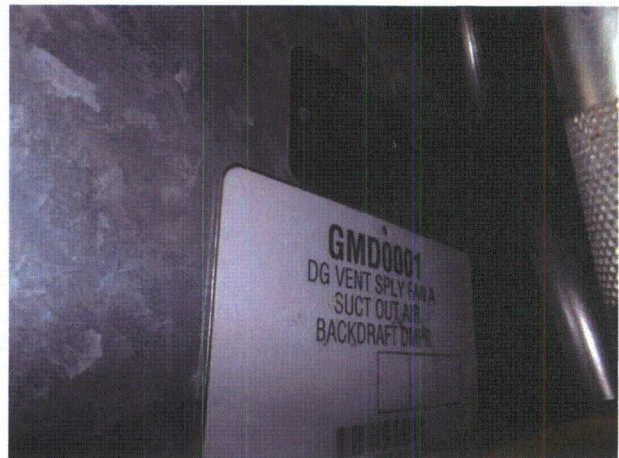
DSCN0131



DSCN0132



DSCN0133



DSCN0134

Status: Y N U

Seismic Walkdown Checklist (SWC)

Equipment ID No.: GMD0001

Equipment Class: (0) Other

Equipment Description: DG VENT SPLY FAN A SUCT OUT AIR BACKDRAFT DMPR



DSCN0135



DSCN0136



DSCN0137



DSCN0138

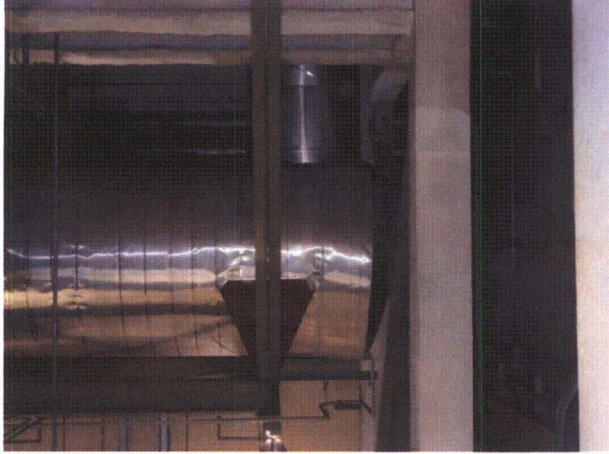
Status: Y N U

Seismic Walkdown Checklist (SWC)

Equipment ID No.: GMD0001

Equipment Class: (0) Other

Equipment Description: DG VENT SPLY FAN A SUCT OUT AIR BACKDRAFT DMPR



DSCN0139

Status: Y N U

Seismic Walkdown Checklist (SWC)

Equipment ID No.: GMTE001

Equipment Class: (19) Temperature Sensors

Equipment Description: DIESEL GEN VENT SUPPLY FAN 1A

Project: Callaway SWEL

Location (Bldg, Elev, Room/Area): DGB, 2000.00 ft, 5203

Manufacturer/Model:

Instructions for Completing Checklist

This checklist may be used to document the results of the Seismic Walkdown of an item of equipment on the SWEL. The space below each of the following questions may be used to record the results of judgments and findings. Additional space is provided at the end of this checklist for documenting other comments.

Anchorage

- | | | |
|----|---|-----|
| 1. | Is anchorage configuration verification required (i.e., is the item one of the 50% of SWEL items requiring such verification)? | Yes |
| 2. | Is the anchorage free of bent, broken, missing or loose hardware? | Yes |
| 3. | Is the anchorage free of corrosion that is more than mild surface oxidation? | Yes |
| 4. | Is the anchorage free of visible cracks in the concrete near the anchors? | Yes |
| 5. | Is the anchorage configuration consistent with plant documentation? (Note: This question only applies if the item is one of the 50% for which an anchorage configuration verification is required.)
<i>Bolted to P1000 type unistrut with 3/8" unistrut bolts. OK per J-04GM99 and J-558B-00008.</i> | Yes |
| 6. | Based on the above anchorage evaluations, is the anchorage free of potentially adverse seismic conditions? | Yes |

Status: Y N U

Seismic Walkdown Checklist (SWC)

Equipment ID No.: GMTE001

Equipment Class: (19) Temperature Sensors

Equipment Description: DIESEL GEN VENT SUPPLY FAN 1A

Interaction Effects

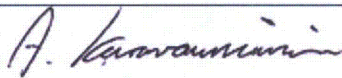
7. Are soft targets free from impact by nearby equipment or structures? Yes
3/8" gap to wall, supported well to unistrut, no issue.
8. Are overhead equipment, distribution systems, ceiling tiles and lighting, and masonry block walls not likely to collapse onto the equipment? Yes
9. Do attached lines have adequate flexibility to avoid damage? Yes
10. Based on the above seismic interaction evaluations, is equipment free of potentially adverse seismic interaction effects? Yes

Other Adverse Conditions

11. Have you looked for and found no adverse seismic conditions that could adversely affect the safety functions of the equipment? Yes

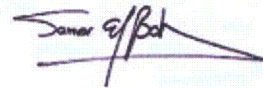
Comments

Evaluated by:



Apostolos Karavoussianis

Date: 11/16/2012



Samer El-Bahey

11/16/2012

Status: Y N U

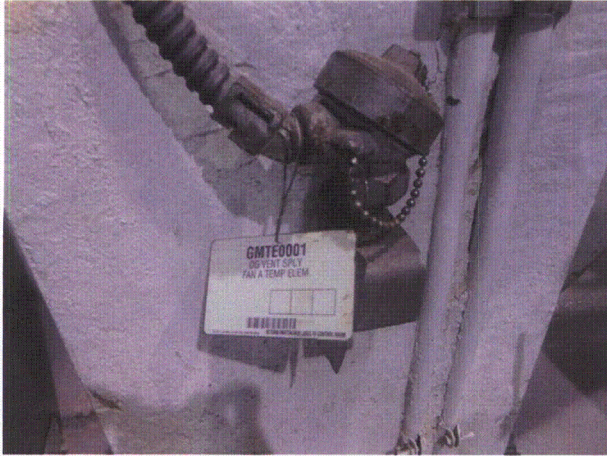
Seismic Walkdown Checklist (SWC)

Equipment ID No.: GMTE001

Equipment Class: (19) Temperature Sensors

Equipment Description: DIESEL GEN VENT SUPPLY FAN 1A

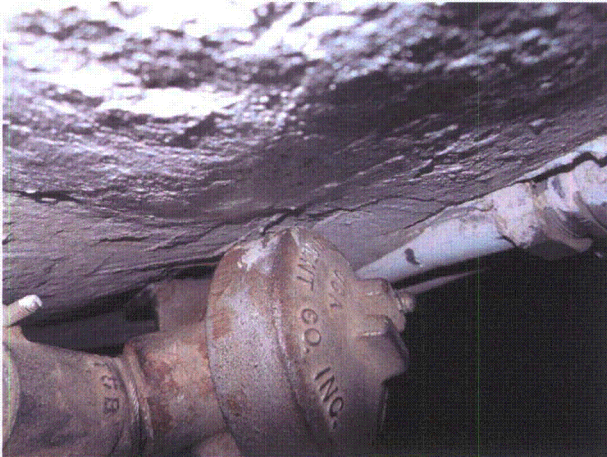
Photos



GMTE0010161



GMTE0010162



GMTE0010163

Status: Y N U

Seismic Walkdown Checklist (SWC)

Equipment ID No.: GMTZ001B

Equipment Class: (0) Other

Equipment Description: ACT FOR DG VENT SUPPLY FAN DAMPER GMD0007

Project: Callaway SWEL

Location (Bldg, Elev, Room/Area): DGB, 2060.00 ft, 5203

Manufacturer/Model:

Instructions for Completing Checklist

This checklist may be used to document the results of the Seismic Walkdown of an item of equipment on the SWEL. The space below each of the following questions may be used to record the results of judgments and findings. Additional space is provided at the end of this checklist for documenting other comments.

Anchorage

- | | |
|--|----------------|
| 1. Is anchorage configuration verification required (i.e., is the item one of the 50% of SWEL items requiring such verification)? | No |
| 2. Is the anchorage free of bent, broken, missing or loose hardware? | Yes |
| 3. Is the anchorage free of corrosion that is more than mild surface oxidation? | Yes |
| 4. Is the anchorage free of visible cracks in the concrete near the anchors? | Not Applicable |
| 5. Is the anchorage configuration consistent with plant documentation? (Note: This question only applies if the item is one of the 50% for which an anchorage configuration verification is required.) | Not Applicable |
| 6. Based on the above anchorage evaluations, is the anchorage free of potentially adverse seismic conditions? | Yes |

Status: Y N U

Seismic Walkdown Checklist (SWC)

Equipment ID No.: GMTZ001B

Equipment Class: (0) Other

Equipment Description: ACT FOR DG VENT SUPPLY FAN DAMPER GMD0007

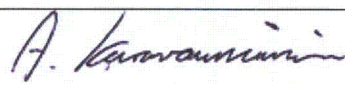
Interaction Effects

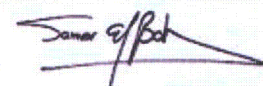
7. Are soft targets free from impact by nearby equipment or structures? Yes
*Nearby scaffold is well support, judged not a seismic concern.
Flex conduit connect is 3/4" from damper, actuator is well mounted on damper,
judged not a concern.*
8. Are overhead equipment, distribution systems, ceiling tiles and lighting, and masonry block walls not likely to collapse onto the equipment? Yes
9. Do attached lines have adequate flexibility to avoid damage? Yes
10. Based on the above seismic interaction evaluations, is equipment free of potentially adverse seismic interaction effects? Yes

Other Adverse Conditions

11. Have you looked for and found no adverse seismic conditions that could adversely affect the safety functions of the equipment? Yes

Comments

Evaluated by:  Apostolos Karavoussianis Date: 11/16/2012

 Samer El-Bahey 11/16/2012

Status: Y N U

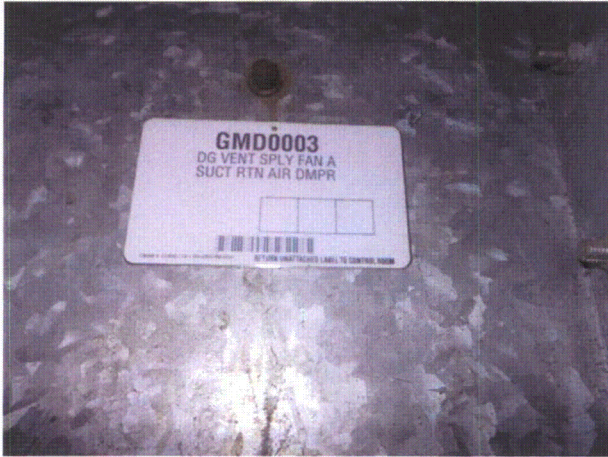
Seismic Walkdown Checklist (SWC)

Equipment ID No.: GMTZ001B

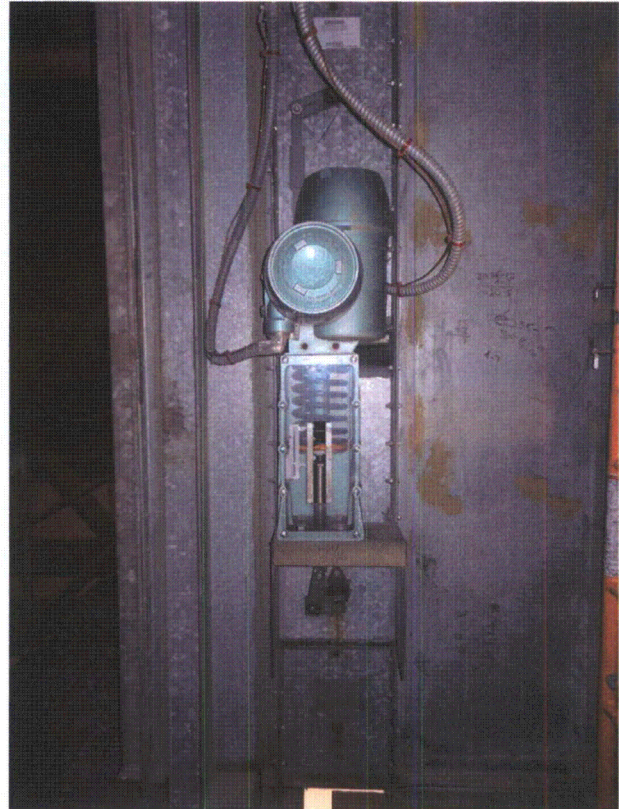
Equipment Class: (0) Other

Equipment Description: ACT FOR DG VENT SUPPLY FAN DAMPER GMD0007

Photos



GMTZ001B0216



GMTZ001B0217



GMTZ001B0218



GMTZ001B0219

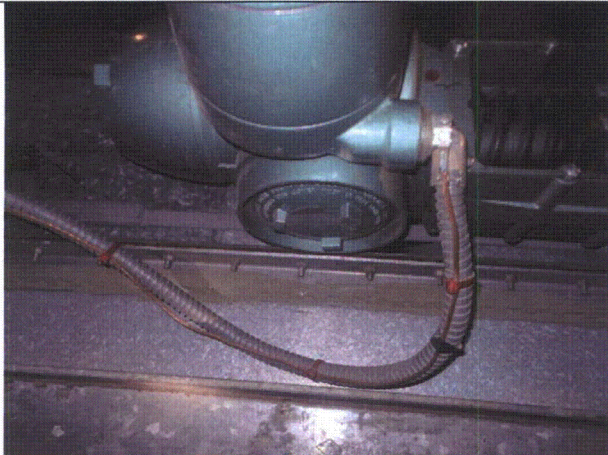
Status: Y N U

Seismic Walkdown Checklist (SWC)

Equipment ID No.: GMTZ001B

Equipment Class: (0) Other

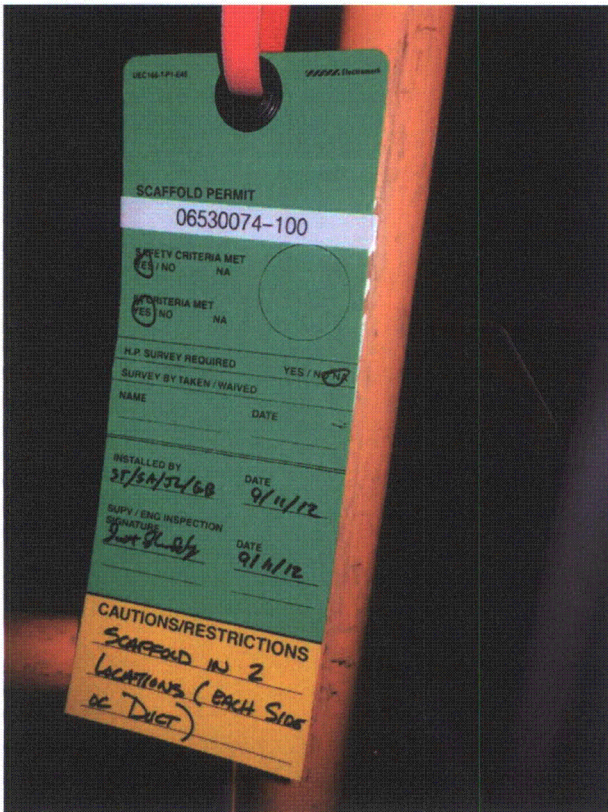
Equipment Description: ACT FOR DG VENT SUPPLY FAN DAMPER GMD0007



GMTZ001B0220



GMTZ001B0221



GMTZ001B0222



GMTZ001B0223

Status: Y N U

Seismic Walkdown Checklist (SWC)

Equipment ID No.: GMTZ001B

Equipment Class: (0) Other

Equipment Description: ACT FOR DG VENT SUPPLY FAN DAMPER GMD0007



GMTZ001B0224



GMTZ001B0225

Status: Y N U

Seismic Walkdown Checklist (SWC)

Equipment ID No.: GNPT935

Equipment Class: (18) Instruments on Racks

Equipment Description: CONTAINMENT ATMOSPHERE

Project: Callaway SWEL

Location (Bldg, Elev, Room/Area): AUX, 2026.00 ft, 1410

Manufacturer/Model:

Instructions for Completing Checklist

This checklist may be used to document the results of the Seismic Walkdown of an item of equipment on the SWEL. The space below each of the following questions may be used to record the results of judgments and findings. Additional space is provided at the end of this checklist for documenting other comments.

Anchorage

- | | |
|--|----------------|
| 1. Is anchorage configuration verification required (i.e., is the item one of the 50% of SWEL items requiring such verification)? | No |
| 2. Is the anchorage free of bent, broken, missing or loose hardware? | Yes |
| 3. Is the anchorage free of corrosion that is more than mild surface oxidation? | Yes |
| 4. Is the anchorage free of visible cracks in the concrete near the anchors? | Yes |
| 5. Is the anchorage configuration consistent with plant documentation? (Note: This question only applies if the item is one of the 50% for which an anchorage configuration verification is required.) | Not Applicable |
| 6. Based on the above anchorage evaluations, is the anchorage free of potentially adverse seismic conditions? | Yes |

Status: Y N U

Seismic Walkdown Checklist (SWC)

Equipment ID No.: GNPT935

Equipment Class: (18) Instruments on Racks

Equipment Description: CONTAINMENT ATMOSPHERE

Interaction Effects

7. Are soft targets free from impact by nearby equipment or structures? Yes
8. Are overhead equipment, distribution systems, ceiling tiles and lighting, and masonry block walls not likely to collapse onto the equipment? Yes
9. Do attached lines have adequate flexibility to avoid damage? Yes
10. Based on the above seismic interaction evaluations, is equipment free of potentially adverse seismic interaction effects? Yes

Other Adverse Conditions

11. Have you looked for and found no adverse seismic conditions that could adversely affect the safety functions of the equipment? Yes

Comments

Evaluated by: A. Karavoussianis Apostolos Karavoussianis Date: 11/16/2012
Samer El-Bahey Samer El-Bahey 11/16/2012

Status: Y N U

Seismic Walkdown Checklist (SWC)

Equipment ID No.: GNPT935

Equipment Class: (18) Instruments on Racks

Equipment Description: CONTAINMENT ATMOSPHERE

Photos



GNPT9350398



GNPT9350399

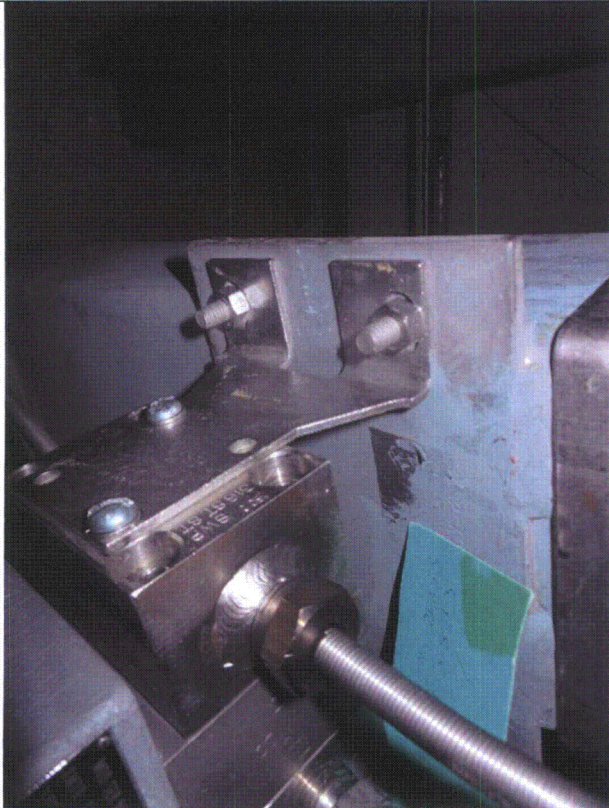
Status: Y N U

Seismic Walkdown Checklist (SWC)

Equipment ID No.: GNPT935

Equipment Class: (18) Instruments on Racks

Equipment Description: CONTAINMENT ATMOSPHERE



GNPT9350400

Status: Y N U

Seismic Walkdown Checklist (SWC)

Equipment ID No.: GSHV0021

Equipment Class: (8) Motor-Operated and Solenoid-Operated Valves

Equipment Description: H2 PURGE OUTER CTMT ISO BUTT VLV

Project: Callaway SWEL

Location (Bldg, Elev, Room/Area): AUX, 2000.00 ft, 1322

Manufacturer/Model:

Instructions for Completing Checklist

This checklist may be used to document the results of the Seismic Walkdown of an item of equipment on the SWEL. The space below each of the following questions may be used to record the results of judgments and findings. Additional space is provided at the end of this checklist for documenting other comments.

Anchorage

- | | |
|--|----------------|
| 1. Is anchorage configuration verification required (i.e., is the item one of the 50% of SWEL items requiring such verification)? | No |
| 2. Is the anchorage free of bent, broken, missing or loose hardware? | Not Applicable |
| 3. Is the anchorage free of corrosion that is more than mild surface oxidation? | Not Applicable |
| 4. Is the anchorage free of visible cracks in the concrete near the anchors? | Not Applicable |
| 5. Is the anchorage configuration consistent with plant documentation? (Note: This question only applies if the item is one of the 50% for which an anchorage configuration verification is required.) | Not Applicable |
| 6. Based on the above anchorage evaluations, is the anchorage free of potentially adverse seismic conditions? | Yes |

Status: Y N U

Seismic Walkdown Checklist (SWC)

Equipment ID No.: GSHV0021

Equipment Class: (8) Motor-Operated and Solenoid-Operated Valves

Equipment Description: H2 PURGE OUTER CTMT ISO BUTT VLV

Interaction Effects

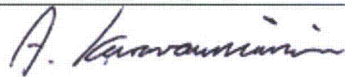
- | | |
|---|-----|
| 7. Are soft targets free from impact by nearby equipment or structures? | Yes |
| 8. Are overhead equipment, distribution systems, ceiling tiles and lighting, and masonry block walls not likely to collapse onto the equipment? | Yes |
| 9. Do attached lines have adequate flexibility to avoid damage? | Yes |
| 10. Based on the above seismic interaction evaluations, is equipment free of potentially adverse seismic interaction effects? | Yes |

Other Adverse Conditions

- | | |
|--|-----|
| 11. Have you looked for and found no adverse seismic conditions that could adversely affect the safety functions of the equipment? | Yes |
|--|-----|

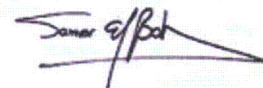
Comments

Evaluated by:



Apostolos Karavoussianis

Date: 11/16/2012



Samer El-Bahey

11/16/2012

Status: Y N U

Seismic Walkdown Checklist (SWC)

Equipment ID No.: GSHV0021

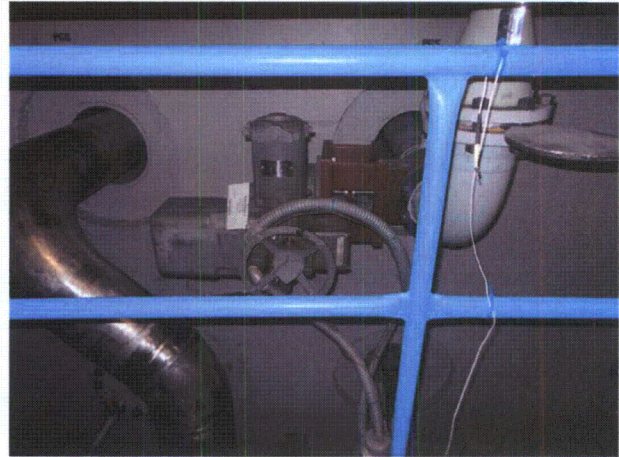
Equipment Class: (8) Motor-Operated and Solenoid-Operated Valves

Equipment Description: H2 PURGE OUTER CTMT ISO BUTT VLV

Photos



GSHV00210508



GSHV00210509

Status: Y N U

Seismic Walkdown Checklist (SWC)

Equipment ID No.: GSHV0021

Equipment Class: (8) Motor-Operated and Solenoid-Operated Valves

Equipment Description: H2 PURGE OUTER CTMT ISO BUTT VLV



GSHV00210510

Status: Y N U

Seismic Walkdown Checklist (SWC)

Equipment ID No.: JELT0001

Equipment Class: (0) Other

Equipment Description: EMERG F/O DAY TK A LEV XMTR

Project: Callaway SWEL

Location (Bldg, Elev, Room/Area): DGB, 2000.00 ft, 5203

Manufacturer/Model:

Instructions for Completing Checklist

This checklist may be used to document the results of the Seismic Walkdown of an item of equipment on the SWEL. The space below each of the following questions may be used to record the results of judgments and findings. Additional space is provided at the end of this checklist for documenting other comments.

Anchorage

- | | |
|--|----------------|
| 1. Is anchorage configuration verification required (i.e., is the item one of the 50% of SWEL items requiring such verification)? | Yes |
| 2. Is the anchorage free of bent, broken, missing or loose hardware? | Yes |
| 3. Is the anchorage free of corrosion that is more than mild surface oxidation? | Yes |
| 4. Is the anchorage free of visible cracks in the concrete near the anchors? | Not Applicable |
| 5. Is the anchorage configuration consistent with plant documentation? (Note: This question only applies if the item is one of the 50% for which an anchorage configuration verification is required.)
<i>Mounting structure verified against DWB, J-27G01 XMTR anchor to mounting structure. Per DWGs J-07G16 and J-07P05, anchorage is consistent with plant documentation.</i> | Yes |
| 6. Based on the above anchorage evaluations, is the anchorage free of potentially adverse seismic conditions? | Yes |

Status: Y N U

Seismic Walkdown Checklist (SWC)

Equipment ID No.: JELT0001

Equipment Class: (0) Other

Equipment Description: EMERG F/O DAY TK A LEV XMTR

Interaction Effects

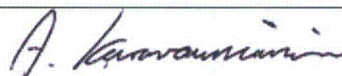
7. Are soft targets free from impact by nearby equipment or structures? Yes
*1/2" gap between mount structure (TS 6 x 6 x 1/2) and unistrut, bracket is approximately 40" high with approximately 30lbs on Edge of mount structure and self weight. The fundamental Frequency of the mount was calculated using the equation $f_n = (1/2 * \pi) * \text{SQRT}(3EI/mL^3) = 65 \text{ Hz}$, where $L = 40"$ and $I = 48.3 \text{ in}^4$, $m = (30\text{lbs} + 42.1\text{lbs} * 3.33') / 386 = 4.4E-4$. This corresponds to a spectral acceleration of 0.3g. The Maximum top displacement was then calculated to be $6.9E-4 < 1/2"$ No adverse condition exists.*
8. Are overhead equipment, distribution systems, ceiling tiles and lighting, and masonry block walls not likely to collapse onto the equipment? Yes
9. Do attached lines have adequate flexibility to avoid damage? Yes
10. Based on the above seismic interaction evaluations, is equipment free of potentially adverse seismic interaction effects? Yes

Other Adverse Conditions

11. Have you looked for and found no adverse seismic conditions that could adversely affect the safety functions of the equipment? Yes

Comments

Evaluated by:



Apostolos Karavoussianis

Date: 11/16/2012

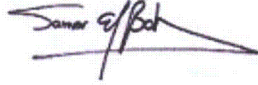
Status: Y N U

Seismic Walkdown Checklist (SWC)

Equipment ID No.: JELT0001

Equipment Class: (0) Other

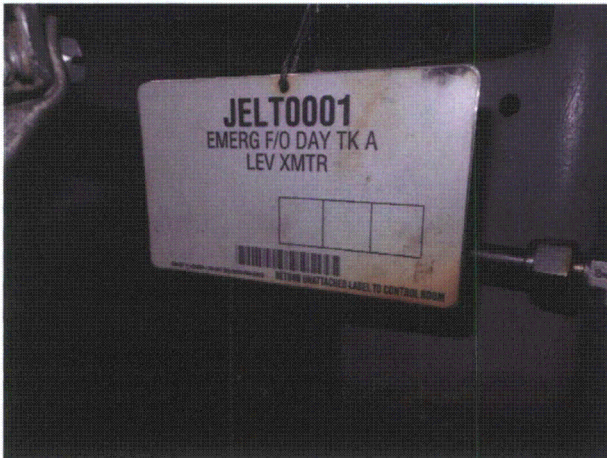
Equipment Description: EMERG F/O DAY TK A LEV XMTR



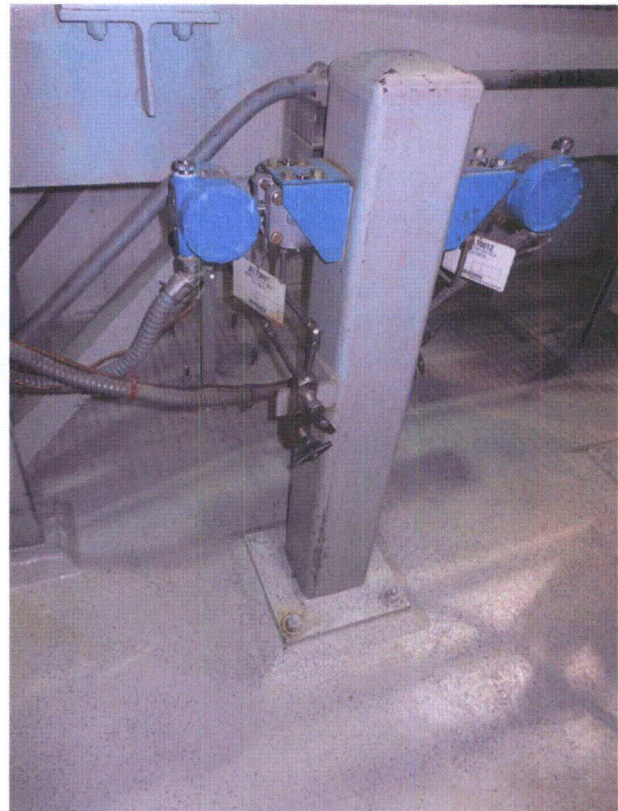
Samer El-Bahey

11/16/2012

Photos



JELT00010164



JELT00010165

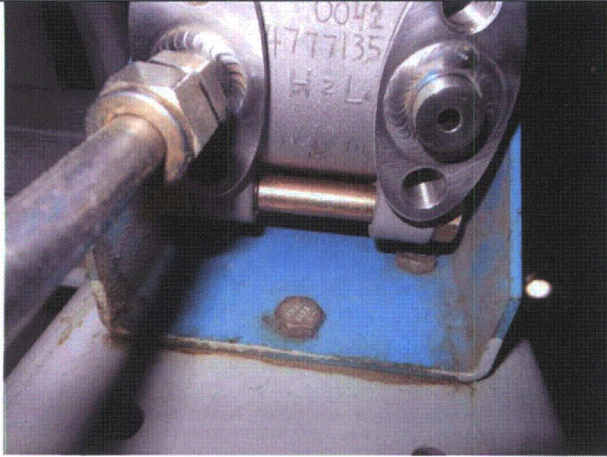
Status: Y N U

Seismic Walkdown Checklist (SWC)

Equipment ID No.: JELT0001

Equipment Class: (0) Other

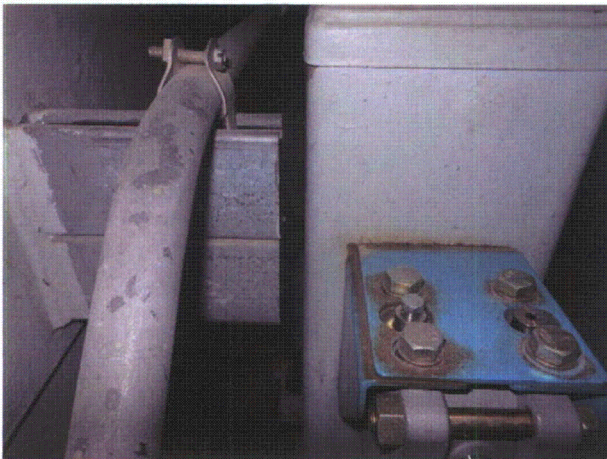
Equipment Description: EMERG F/O DAY TK A LEV XMTR



JELT00010166



JELT00010167



JELT00010168

Status: Y N U

Seismic Walkdown Checklist (SWC)

Equipment ID No.: KJ121

Equipment Class: (20) Instrumentation and Control Panels and Cabinets

Equipment Description: GAUGE PANEL

Project: Callaway SWEL

Location (Bldg, Elev, Room/Area): DGB, 2000.00 ft, 5203

Manufacturer/Model:

Instructions for Completing Checklist

This checklist may be used to document the results of the Seismic Walkdown of an item of equipment on the SWEL. The space below each of the following questions may be used to record the results of judgments and findings. Additional space is provided at the end of this checklist for documenting other comments.

Anchorage

- | | |
|--|----------------|
| 1. Is anchorage configuration verification required (i.e., is the item one of the 50% of SWEL items requiring such verification)? | No |
| 2. Is the anchorage free of bent, broken, missing or loose hardware? | Yes |
| 3. Is the anchorage free of corrosion that is more than mild surface oxidation? | Yes |
| 4. Is the anchorage free of visible cracks in the concrete near the anchors? | Yes |
| 5. Is the anchorage configuration consistent with plant documentation? (Note: This question only applies if the item is one of the 50% for which an anchorage configuration verification is required.)
<i>Front weld is visually verified as continuous 1/4" weld.
Back weld is verified by hand inspection (at least 4" in).</i> | Not Applicable |
| 6. Based on the above anchorage evaluations, is the anchorage free of potentially adverse seismic conditions? | Yes |

Status: Y N U

Seismic Walkdown Checklist (SWC)

Equipment ID No.: KJ121

Equipment Class: (20) Instrumentation and Control Panels and Cabinets

Equipment Description: GAUGE PANEL

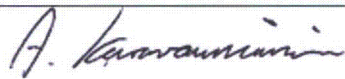
Interaction Effects

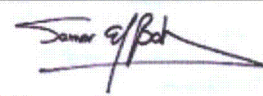
7. Are soft targets free from impact by nearby equipment or structures? Yes
*Bracing members are 1-1/8" away, no concern.
Seismic scaffold stored 2" behind cabinet, no concern.*
8. Are overhead equipment, distribution systems, ceiling tiles and lighting, and masonry block walls not likely to collapse onto the equipment? Yes
Overhead fan is well supported.
9. Do attached lines have adequate flexibility to avoid damage? Yes
10. Based on the above seismic interaction evaluations, is equipment free of potentially adverse seismic interaction effects? Yes

Other Adverse Conditions

11. Have you looked for and found no adverse seismic conditions that could adversely affect the safety functions of the equipment? Unknown
*Cabinet internals could not be accessed during at-power walkdowns.
Internals will be inspected during next bus outage.*

Comments

Evaluated by:  Apostolos Karavoussianis Date: 11/16/2012

 Samer El-Bahey 11/16/2012

Status: Y N U

Seismic Walkdown Checklist (SWC)

Equipment ID No.: KJ121

Equipment Class: (20) Instrumentation and Control Panels and Cabinets

Equipment Description: GAUGE PANEL

Photos



KJ1210140



KJ1210143



KJ1210145



KJ1210146

Status: Y N U

Seismic Walkdown Checklist (SWC)

Equipment ID No.: KJ121

Equipment Class: (20) Instrumentation and Control Panels and Cabinets

Equipment Description: GAUGE PANEL



KJ1210147



KJ1210148



KJ1210149



KJ1210150

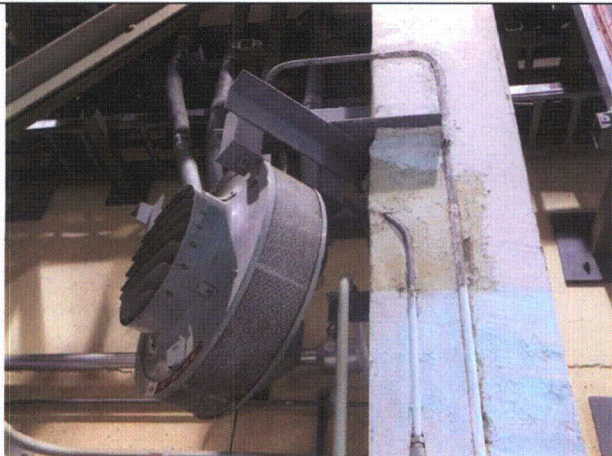
Status: Y N U

Seismic Walkdown Checklist (SWC)

Equipment ID No.: KJ121

Equipment Class: (20) Instrumentation and Control Panels and Cabinets

Equipment Description: GAUGE PANEL



KJ1210151

Status: Y N U

Seismic Walkdown Checklist (SWC)

Equipment ID No.: KKJ01A

Equipment Class: (17) Engine-Generators

Equipment Description: STANDBY DIESEL (GENERATOR)

Project: Callaway SWEL

Location (Bldg, Elev, Room/Area): DGB, 2000.00 ft, 5203

Manufacturer/Model:

Instructions for Completing Checklist

This checklist may be used to document the results of the Seismic Walkdown of an item of equipment on the SWEL. The space below each of the following questions may be used to record the results of judgments and findings. Additional space is provided at the end of this checklist for documenting other comments.

Anchorage

1. Is anchorage configuration verification required (i.e., is the item one of the 50% of SWEL items requiring such verification)? Yes

2. Is the anchorage free of bent, broken, missing or loose hardware? Yes

3. Is the anchorage free of corrosion that is more than mild surface oxidation? Yes

4. Is the anchorage free of visible cracks in the concrete near the anchors? Yes

5. Is the anchorage configuration consistent with plant documentation? (Note: This question only applies if the item is one of the 50% for which an anchorage configuration verification is required.) Yes

6. Based on the above anchorage evaluations, is the anchorage free of potentially adverse seismic conditions? Yes

Status: Y N U

Seismic Walkdown Checklist (SWC)

Equipment ID No.: KKJ01A

Equipment Class: (17) Engine-Generators

Equipment Description: STANDBY DIESEL (GENERATOR)

OK per C-2C5111, A2325, M-2G051.

Interaction Effects

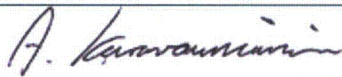
7. Are soft targets free from impact by nearby equipment or structures? Yes
8. Are overhead equipment, distribution systems, ceiling tiles and lighting, and masonry block walls not likely to collapse onto the equipment? Yes
9. Do attached lines have adequate flexibility to avoid damage? Yes
10. Based on the above seismic interaction evaluations, is equipment free of potentially adverse seismic interaction effects? Yes

Other Adverse Conditions

11. Have you looked for and found no adverse seismic conditions that could adversely affect the safety functions of the equipment? Yes

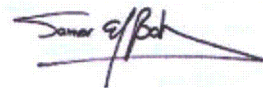
Comments

Evaluated by:



Apostolos Karavoussianis

Date: 11/16/2012



Samer El-Bahey

11/16/2012

Status: Y N U

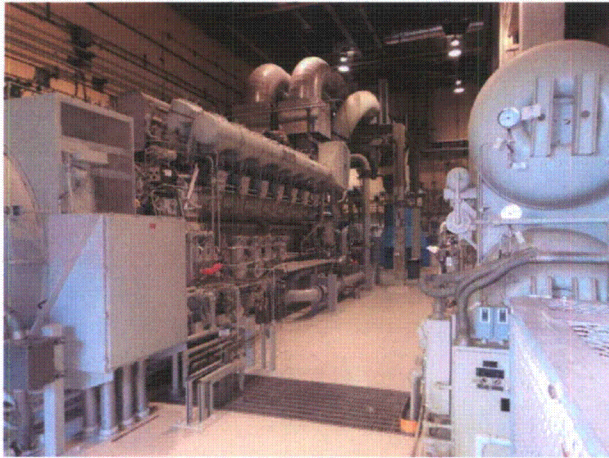
Seismic Walkdown Checklist (SWC)

Equipment ID No.: KKJ01A

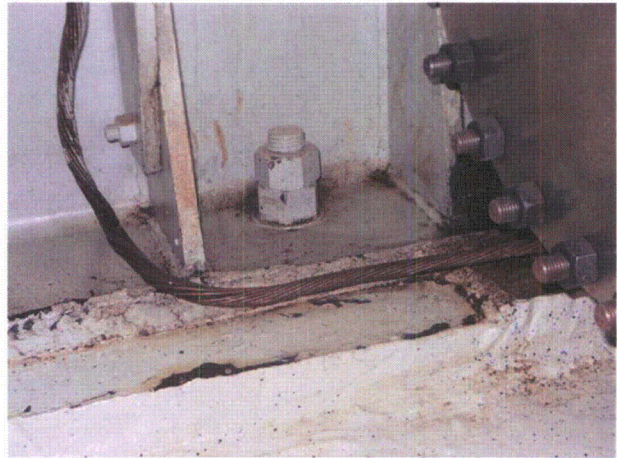
Equipment Class: (17) Engine-Generators

Equipment Description: STANDBY DIESEL (GENERATOR)

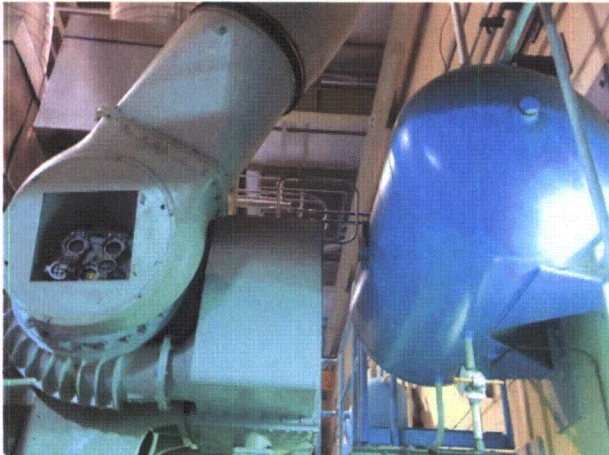
Photos



KKJ01A0170



KKJ01A0171



KKJ01A0172

Status: Y N U

Seismic Walkdown Checklist (SWC)

Equipment ID No.: NE01

Equipment Class: (17) Engine-Generators

Equipment Description: STANDBY #1

Project: Callaway SWEL

Location (Bldg, Elev, Room/Area): DGB, 2000.00 ft, 5203

Manufacturer/Model:

Instructions for Completing Checklist

This checklist may be used to document the results of the Seismic Walkdown of an item of equipment on the SWEL. The space below each of the following questions may be used to record the results of judgments and findings. Additional space is provided at the end of this checklist for documenting other comments.

Anchorage

- | | | |
|----|--|-----|
| 1. | Is anchorage configuration verification required (i.e., is the item one of the 50% of SWEL items requiring such verification)? | Yes |
| 2. | Is the anchorage free of bent, broken, missing or loose hardware?

<i>One of the bolts is missing its jam nut. CAR 201206500 and Job 12004790 are initiated.
1-1/2" bolts ok 7-1/2" proj ok.</i> | No |
| 3. | Is the anchorage free of corrosion that is more than mild surface oxidation? | Yes |
| 4. | Is the anchorage free of visible cracks in the concrete near the anchors? | Yes |
| 5. | Is the anchorage configuration consistent with plant documentation? (Note: This question only applies if the item is one of the 50% for which an anchorage configuration verification is required.)
<i>OK per C-2C5111, A2325, M-2G051, Equipment is missing a jam nut.</i> | No |
| 6. | Based on the above anchorage evaluations, is the anchorage free of potentially adverse seismic conditions? | No |

Status: Y N U

Seismic Walkdown Checklist (SWC)

Equipment ID No.: NE01

Equipment Class: (17) Engine-Generators

Equipment Description: STANDBY #1

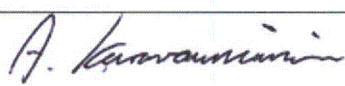
Interaction Effects

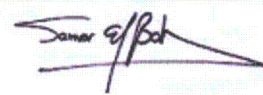
7. Are soft targets free from impact by nearby equipment or structures? Yes
1/2" gap between equipment and flex tube. all on one skid judged ok.
8. Are overhead equipment, distribution systems, ceiling tiles and lighting, and masonry block walls not likely to collapse onto the equipment? Yes
9. Do attached lines have adequate flexibility to avoid damage? Yes
10. Based on the above seismic interaction evaluations, is equipment free of potentially adverse seismic interaction effects? Yes

Other Adverse Conditions

11. Have you looked for and found no adverse seismic conditions that could adversely affect the safety functions of the equipment? Yes

Comments

Evaluated by:  Apostolos Karavoussianis Date: 11/16/2012

 Samer El-Bahey 11/16/2012

Status: Y N U

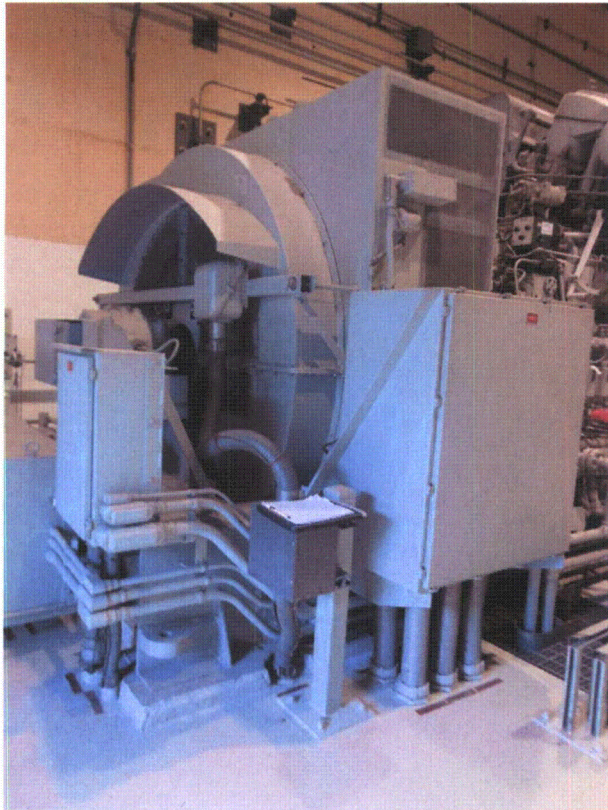
Seismic Walkdown Checklist (SWC)

Equipment ID No.: NE01

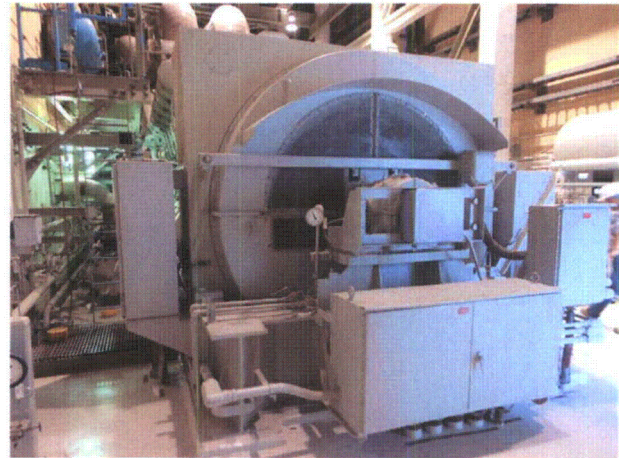
Equipment Class: (17) Engine-Generators

Equipment Description: STANDBY #1

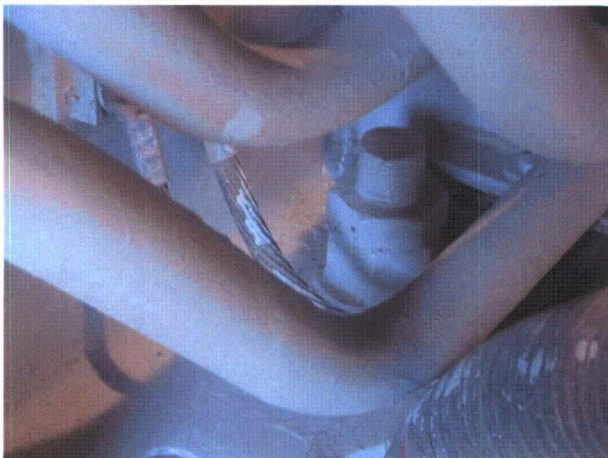
Photos



NE010175



NE010176



NE010177



NE010178

Status: Y N U

Seismic Walkdown Checklist (SWC)

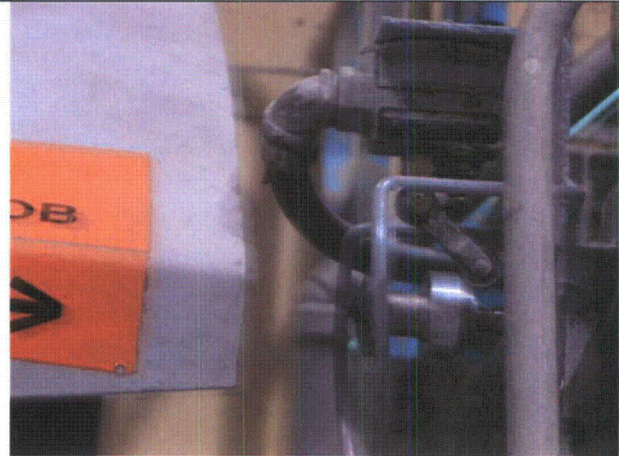
Equipment ID No.: NE01

Equipment Class: (17) Engine-Generators

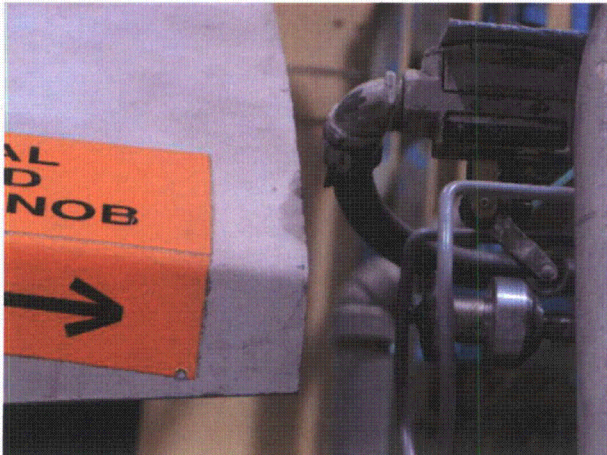
Equipment Description: STANDBY #1



NE010179



NE010180



NE010181

Status: Y N U

Seismic Walkdown Checklist (SWC)

Equipment ID No.: NF039A

Equipment Class: (20) Instrumentation and Control Panels and Cabinets

Equipment Description: CONT SHED/SEQ CH 1 LOGIC

Project: Callaway SWEL

Location (Bldg, Elev, Room/Area): CB, 2047.50 ft, 3605

Manufacturer/Model:

Instructions for Completing Checklist

This checklist may be used to document the results of the Seismic Walkdown of an item of equipment on the SWEL. The space below each of the following questions may be used to record the results of judgments and findings. Additional space is provided at the end of this checklist for documenting other comments.

Anchorage

- | | |
|--|---------|
| 1. Is anchorage configuration verification required (i.e., is the item one of the 50% of SWEL items requiring such verification)? | Yes |
| 2. Is the anchorage free of bent, broken, missing or loose hardware?
<i>Anchorage is not visible.</i> | Unknown |
| 3. Is the anchorage free of corrosion that is more than mild surface oxidation?
<i>Anchorage is not visible.</i> | Unknown |
| 4. Is the anchorage free of visible cracks in the concrete near the anchors?
<i>Anchorage is not visible.</i> | Unknown |
| 5. Is the anchorage configuration consistent with plant documentation? (Note: This question only applies if the item is one of the 50% for which an anchorage configuration verification is required.)
<i>Per J-24001, C-2C3611, C-2008 Det. 5, cabinet is welded front and back to embedded plates. Floor is covered by tiles and cabinet front has a plastic base board. Hence, anchorage is not visible. Job 12004987 was created to remove the tiles to attempt to inspect the anchorage configuration.</i> | Unknown |
| 6. Based on the above anchorage evaluations, is the anchorage free of potentially adverse seismic conditions? | Unknown |

Status: Y N U

Seismic Walkdown Checklist (SWC)

Equipment ID No.: NF039A

Equipment Class: (20) Instrumentation and Control Panels and Cabinets

Equipment Description: CONT SHED/SEQ CH 1 LOGIC

Interaction Effects

7. Are soft targets free from impact by nearby equipment or structures? Yes

Adjacent cabinet bolted together.

8. Are overhead equipment, distribution systems, ceiling tiles and lighting, and masonry block walls not likely to collapse onto the equipment? No

Open S-hook nearby. CAR 201206436 and Job 12004790 were initiated.

9. Do attached lines have adequate flexibility to avoid damage? Yes

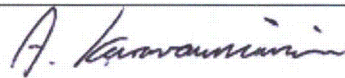
10. Based on the above seismic interaction evaluations, is equipment free of potentially adverse seismic interaction effects? No

Other Adverse Conditions

11. Have you looked for and found no adverse seismic conditions that could adversely affect the safety functions of the equipment? Yes

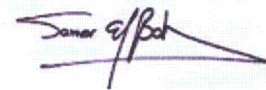
Comments

Evaluated by:



Apostolos Karavoussianis

Date: 11/16/2012



Samer El-Bahey

11/16/2012

Status: Y N U

Seismic Walkdown Checklist (SWC)

Equipment ID No.: NF039A

Equipment Class: (20) Instrumentation and Control Panels and Cabinets

Equipment Description: CONT SHED/SEQ CH 1 LOGIC

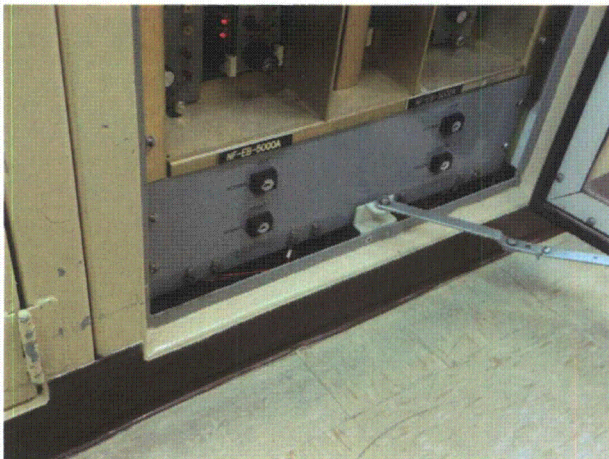
Photos



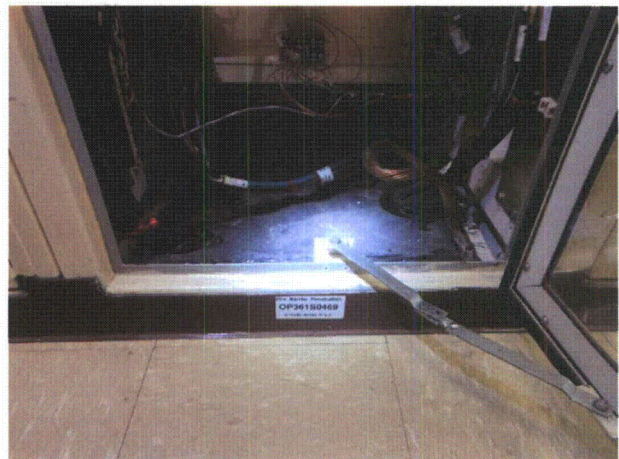
NF039A0001



NF039A0002



NF039A0003



NF039A0006

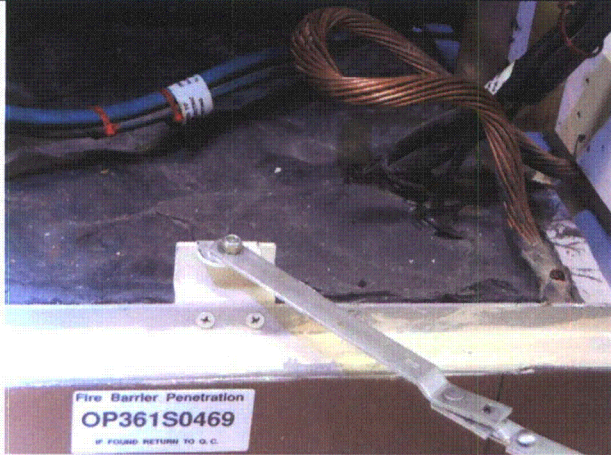
Status: Y N U

Seismic Walkdown Checklist (SWC)

Equipment ID No.: NF039A

Equipment Class: (20) Instrumentation and Control Panels and Cabinets

Equipment Description: CONT SHED/SEQ CH 1 LOGIC



NF039A0007



NF039A0008



NF039A0009

Status: Y N U

Seismic Walkdown Checklist (SWC)

Equipment ID No.: NG02A

Equipment Class: (1) Motor Control Centers

Equipment Description: 480 VAC

Project: Callaway SWEL

Location (Bldg, Elev, Room/Area): CB, 2000.00 ft, 3302

Manufacturer/Model:

Instructions for Completing Checklist

This checklist may be used to document the results of the Seismic Walkdown of an item of equipment on the SWEL. The space below each of the following questions may be used to record the results of judgments and findings. Additional space is provided at the end of this checklist for documenting other comments.

Anchorage

1. Is anchorage configuration verification required (i.e., is the item one of the 50% of SWEL items requiring such verification)? Yes

2. Is the anchorage free of bent, broken, missing or loose hardware? Yes

3. Is the anchorage free of corrosion that is more than mild surface oxidation? Yes

4. Is the anchorage free of visible cracks in the concrete near the anchors? Yes

5. Is the anchorage configuration consistent with plant documentation? (Note: This question only applies if the item is one of the 50% for which an anchorage configuration verification is required.) Yes
OK per DWG's (E-018-0043 and E-018-00624742).

6. Based on the above anchorage evaluations, is the anchorage free of potentially adverse seismic conditions? Yes

Status: Y N U

Seismic Walkdown Checklist (SWC)

Equipment ID No.: NG02A
Equipment Class: (1) Motor Control Centers
Equipment Description: 480 VAC

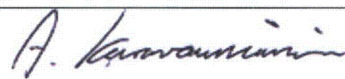
Interaction Effects

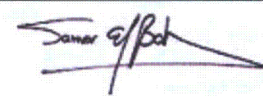
7. Are soft targets free from impact by nearby equipment or structures? Yes
8. Are overhead equipment, distribution systems, ceiling tiles and lighting, and masonry block walls not likely to collapse onto the equipment? Yes
Block wall. DWG A-2325 shows seismic category III/II CMUs within the whole elevation.
Drain Pipe with Victaulic coupling (LEV0719) well supported, ok.
9. Do attached lines have adequate flexibility to avoid damage? Yes
10. Based on the above seismic interaction evaluations, is equipment free of potentially adverse seismic interaction effects? Yes

Other Adverse Conditions

11. Have you looked for and found no adverse seismic conditions that could adversely affect the safety functions of the equipment? Unknown
Cabinet internals could not be accessed during at-power walkdowns.
Internals will be inspected during next bus outage.

Comments

Evaluated by:  Apostolos Karavoussianis Date: 11/16/2012

 Samer El-Bahey 11/16/2012

Status: Y N U

Seismic Walkdown Checklist (SWC)

Equipment ID No.: NG02A

Equipment Class: (1) Motor Control Centers

Equipment Description: 480 VAC

Photos



NG02A0533



NG02A0534



NG02A0535



NG02A0536

Status: Y N U

Seismic Walkdown Checklist (SWC)

Equipment ID No.: NG04C

Equipment Class: (1) Motor Control Centers

Equipment Description: 480 VAC

Project: Callaway SWEL

Location (Bldg, Elev, Room/Area): AUX, 2047.50 ft, 1501

Manufacturer/Model:

Instructions for Completing Checklist

This checklist may be used to document the results of the Seismic Walkdown of an item of equipment on the SWEL. The space below each of the following questions may be used to record the results of judgments and findings. Additional space is provided at the end of this checklist for documenting other comments.

Anchorage

- | | |
|--|-----|
| 1. Is anchorage configuration verification required (i.e., is the item one of the 50% of SWEL items requiring such verification)? | Yes |
| 2. Is the anchorage free of bent, broken, missing or loose hardware? | Yes |
| 3. Is the anchorage free of corrosion that is more than mild surface oxidation? | Yes |
| 4. Is the anchorage free of visible cracks in the concrete near the anchors? | Yes |
| 5. Is the anchorage configuration consistent with plant documentation? (Note: This question only applies if the item is one of the 50% for which an anchorage configuration verification is required.)
<i>OK per DWG's (E-018-0043 and E-018-00624742).</i> | Yes |
| 6. Based on the above anchorage evaluations, is the anchorage free of potentially adverse seismic conditions? | Yes |

Status: Y N U

Seismic Walkdown Checklist (SWC)

Equipment ID No.: NG04C

Equipment Class: (1) Motor Control Centers

Equipment Description: 480 VAC

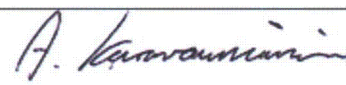
Interaction Effects

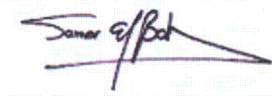
7. Are soft targets free from impact by nearby equipment or structures? Yes
Top shield proximity to wall is resolved by IPEEE by adding clip angles to wall.
8. Are overhead equipment, distribution systems, ceiling tiles and lighting, and masonry block walls not likely to collapse onto the equipment? Yes
9. Do attached lines have adequate flexibility to avoid damage? Yes
10. Based on the above seismic interaction evaluations, is equipment free of potentially adverse seismic interaction effects? Yes

Other Adverse Conditions

11. Have you looked for and found no adverse seismic conditions that could adversely affect the safety functions of the equipment? Unknown
*Cabinet internals could not be accessed during at-power walkdowns.
Internals will be inspected during next bus outage.*

Comments

Evaluated by:  Apostolos Karavoussianis Date: 11/16/2012

 Samer El-Bahey 11/16/2012

Status: Y N U

Seismic Walkdown Checklist (SWC)

Equipment ID No.: NG04C

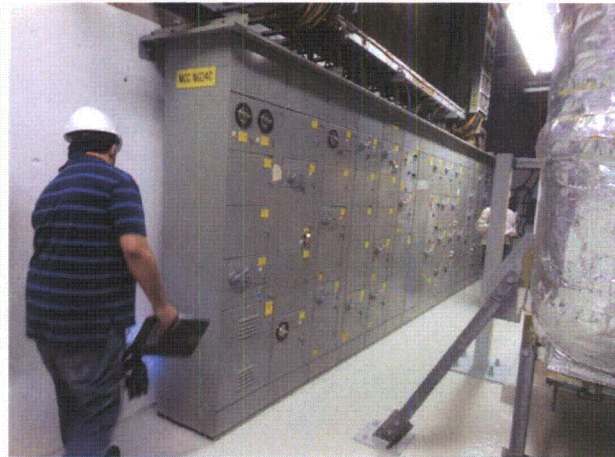
Equipment Class: (1) Motor Control Centers

Equipment Description: 480 VAC

Photos



NG04C0520



NG04C0521



NG04C0522



NG04C0523

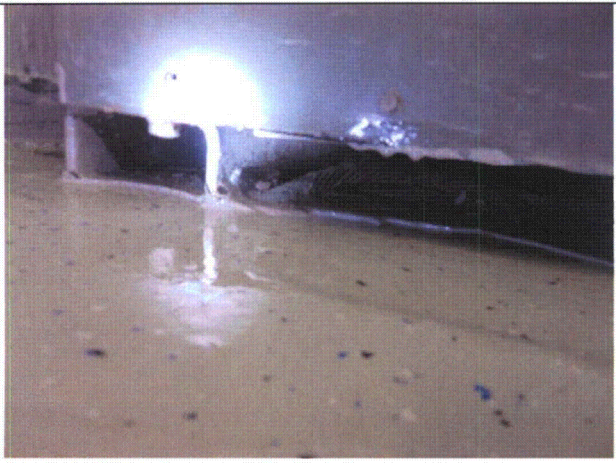
Status: Y N U

Seismic Walkdown Checklist (SWC)

Equipment ID No.: NG04C

Equipment Class: (1) Motor Control Centers

Equipment Description: 480 VAC



NG04C0524

Status: Y N U

Seismic Walkdown Checklist (SWC)

Equipment ID No.: NG07

Equipment Class: (2) Low Voltage Switchgear

Equipment Description: LC 480 VAC

Project: Callaway SWEL

Location (Bldg, Elev, Room/Area): UHS, 2000.00 ft, U301

Manufacturer/Model:

Instructions for Completing Checklist

This checklist may be used to document the results of the Seismic Walkdown of an item of equipment on the SWEL. The space below each of the following questions may be used to record the results of judgments and findings. Additional space is provided at the end of this checklist for documenting other comments.

Anchorage

- | | |
|--|-----|
| 1. Is anchorage configuration verification required (i.e., is the item one of the 50% of SWEL items requiring such verification)? | Yes |
| 2. Is the anchorage free of bent, broken, missing or loose hardware? | Yes |
| 3. Is the anchorage free of corrosion that is more than mild surface oxidation? | Yes |
| 4. Is the anchorage free of visible cracks in the concrete near the anchors? | Yes |
| 5. Is the anchorage configuration consistent with plant documentation? (Note: This question only applies if the item is one of the 50% for which an anchorage configuration verification is required.)
<i>Document show bolts, plug weld were visible at multiple locations instead. Per DWG's E-017-00716, Alternative mounting by Plug welds is used from DWG's C-2003, and C-2008.</i> | Yes |
| 6. Based on the above anchorage evaluations, is the anchorage free of potentially adverse seismic conditions? | Yes |

Status: Y N U

Seismic Walkdown Checklist (SWC)

Equipment ID No.: NG07

Equipment Class: (2) Low Voltage Switchgear

Equipment Description: LC 480 VAC

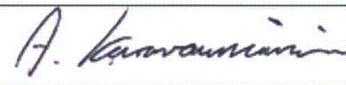
Interaction Effects

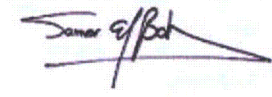
7. Are soft targets free from impact by nearby equipment or structures? Yes
8. Are overhead equipment, distribution systems, ceiling tiles and lighting, and masonry block walls not likely to collapse onto the equipment? Yes
9. Do attached lines have adequate flexibility to avoid damage? Yes
10. Based on the above seismic interaction evaluations, is equipment free of potentially adverse seismic interaction effects? Yes
*Transformer beside with open-coils look fine, well anchored.
Heater above and well supported to one wall.*

Other Adverse Conditions

11. Have you looked for and found no adverse seismic conditions that could adversely affect the safety functions of the equipment? Unknown
*Cabinet internals could not be accesses during at-power walkdowns.
Internals will be inspected during next bus outage.*

Comments

Evaluated by:  Apostolos Karavoussianis Date: 11/16/2012

 Samer El-Bahey 11/16/2012

Status: Y N U

Seismic Walkdown Checklist (SWC)

Equipment ID No.: NG07

Equipment Class: (2) Low Voltage Switchgear

Equipment Description: LC 480 VAC

Photos



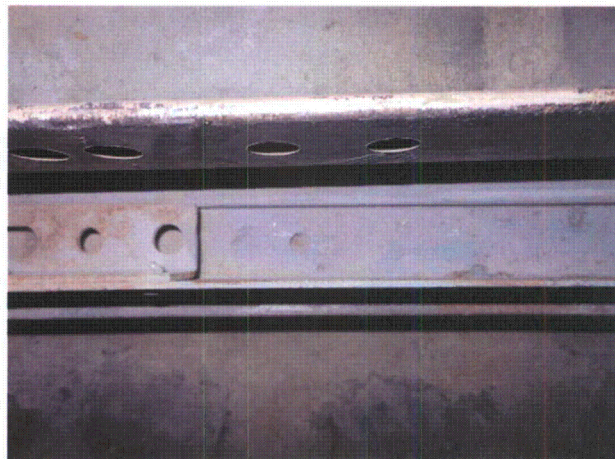
NG070064



NG070065



NG070066



NG070067

Status: Y N U

Seismic Walkdown Checklist (SWC)

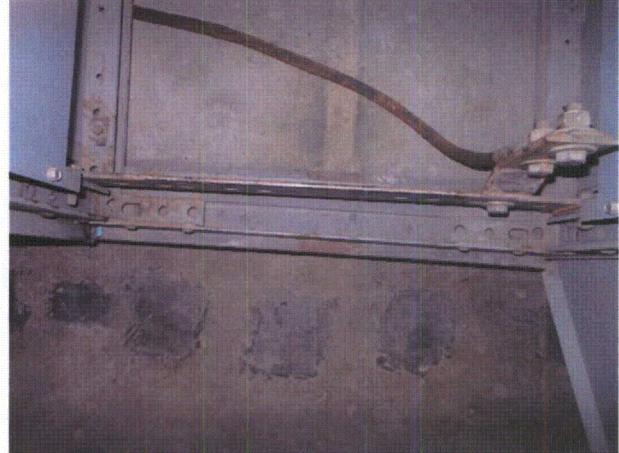
Equipment ID No.: NG07

Equipment Class: (2) Low Voltage Switchgear

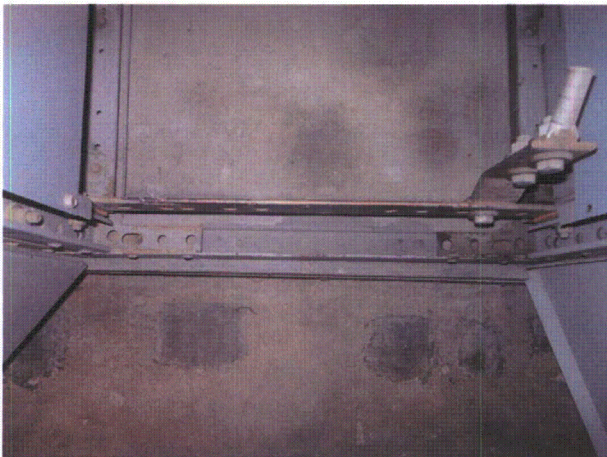
Equipment Description: LC 480 VAC



NG070068



NG070069



NG070070



NG070071

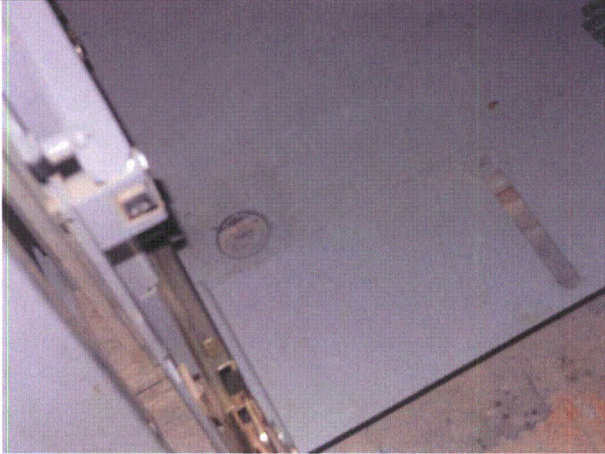
Status: Y N U

Seismic Walkdown Checklist (SWC)

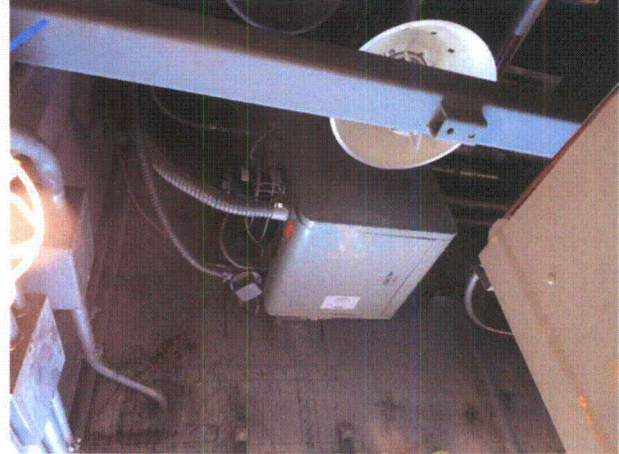
Equipment ID No.: NG07

Equipment Class: (2) Low Voltage Switchgear

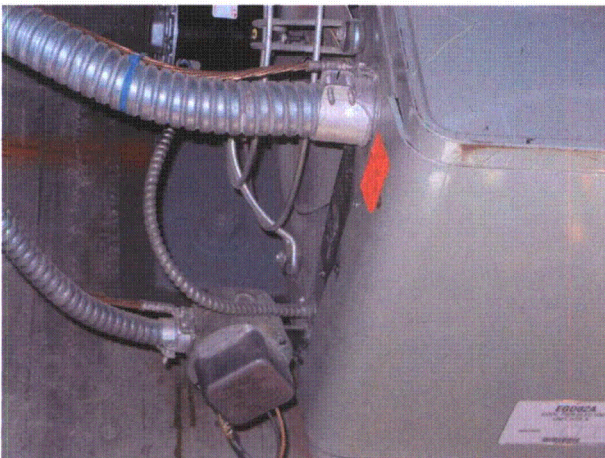
Equipment Description: LC 480 VAC



NG070072



NG070073



NG070074

Status: Y N U

Seismic Walkdown Checklist (SWC)

Equipment ID No.: NG07F

Equipment Class: (1) Motor Control Centers

Equipment Description: MCC 480 VAC

Project: Callaway SWEL

Location (Bldg, Elev, Room/Area): UHS, 2000.00 ft, U301

Manufacturer/Model:

Instructions for Completing Checklist

This checklist may be used to document the results of the Seismic Walkdown of an item of equipment on the SWEL. The space below each of the following questions may be used to record the results of judgments and findings. Additional space is provided at the end of this checklist for documenting other comments.

Anchorage

1. Is anchorage configuration verification required (i.e., is the item one of the 50% of SWEL items requiring such verification)? Yes

2. Is the anchorage free of bent, broken, missing or loose hardware? Yes

3. Is the anchorage free of corrosion that is more than mild surface oxidation? Yes

4. Is the anchorage free of visible cracks in the concrete near the anchors? Yes

5. Is the anchorage configuration consistent with plant documentation? (Note: This question only applies if the item is one of the 50% for which an anchorage configuration verification is required.) Yes
Bottom of cabinet is welded to embeds at 16" to 18". OK per DWG's (E-018-0043 and E-018-00624742).

6. Based on the above anchorage evaluations, is the anchorage free of potentially adverse seismic conditions? Yes

Status: Y N U

Seismic Walkdown Checklist (SWC)

Equipment ID No.: NG07F

Equipment Class: (1) Motor Control Centers

Equipment Description: MCC 480 VAC

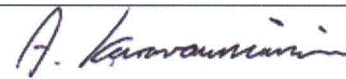
Interaction Effects

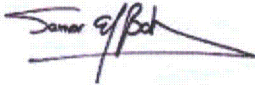
7. Are soft targets free from impact by nearby equipment or structures? Yes
8. Are overhead equipment, distribution systems, ceiling tiles and lighting, and masonry block walls not likely to collapse onto the equipment? Yes
Duct work above is well supported.
9. Do attached lines have adequate flexibility to avoid damage? Yes
10. Based on the above seismic interaction evaluations, is equipment free of potentially adverse seismic interaction effects? Yes

Other Adverse Conditions

11. Have you looked for and found no adverse seismic conditions that could adversely affect the safety functions of the equipment? Unknown
*Cabinet internals could not be accessed during at-power walkdowns.
Internals will be inspected during next bus outage.*

Comments

Evaluated by:  Apostolos Karavoussianis Date: 11/16/2012

 Samer El-Bahey 11/16/2012

Status: Y N U

Seismic Walkdown Checklist (SWC)

Equipment ID No.: NG07F

Equipment Class: (1) Motor Control Centers

Equipment Description: MCC 480 VAC

Photos



NG07F0075



NG07F0076



NG07F0077



NG07F0078

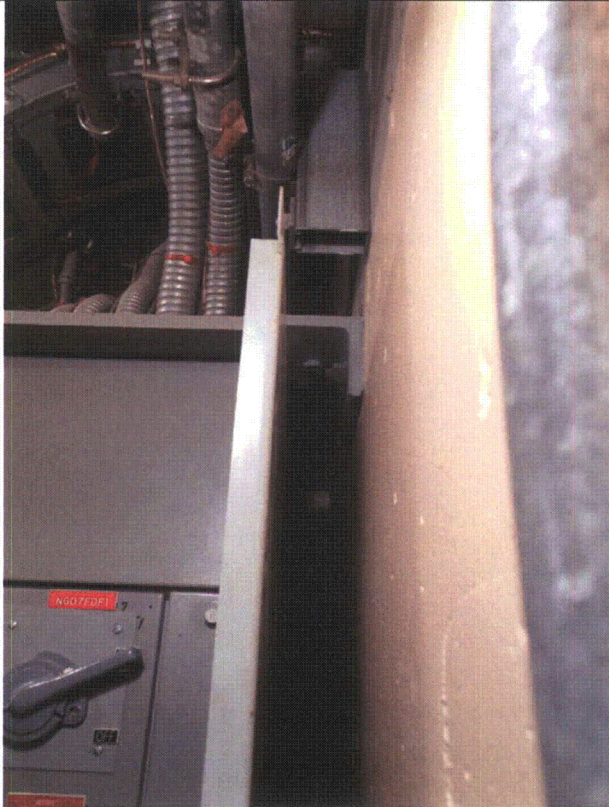
Status: Y N U

Seismic Walkdown Checklist (SWC)

Equipment ID No.: NG07F

Equipment Class: (1) Motor Control Centers

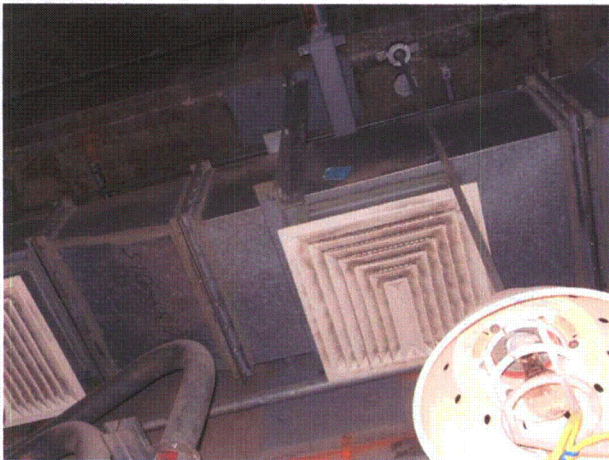
Equipment Description: MCC 480 VAC



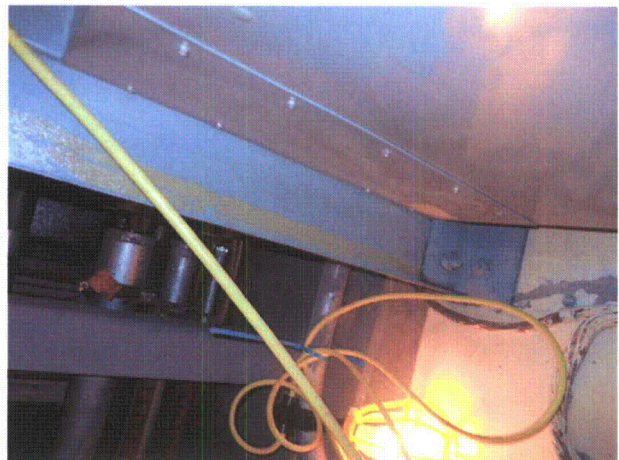
NG07F0079



NG07F0080



NG07F0081



NG07F0082

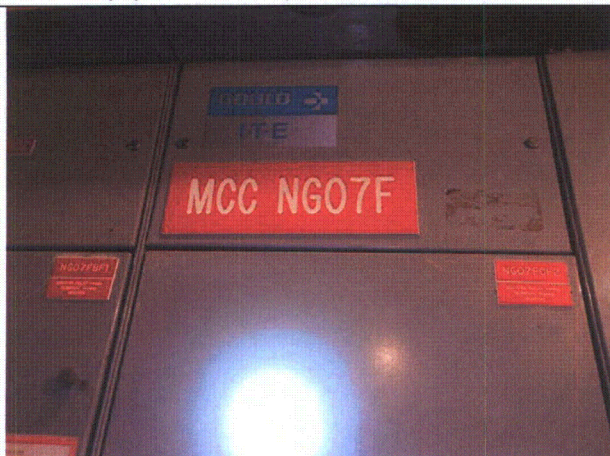
Status: Y N U

Seismic Walkdown Checklist (SWC)

Equipment ID No.: NG07F

Equipment Class: (1) Motor Control Centers

Equipment Description: MCC 480 VAC



NG07F0124



NG07F0125



NG07F0126



NG07F0127

Status: Y N U

Seismic Walkdown Checklist (SWC)

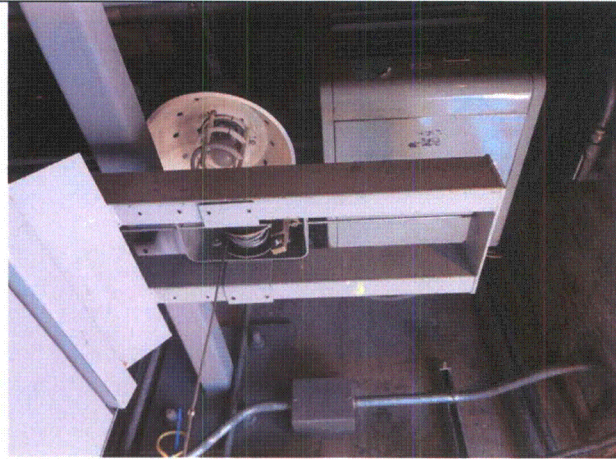
Equipment ID No.: NG07F

Equipment Class: (1) Motor Control Centers

Equipment Description: MCC 480 VAC



NG07F0128



NG07F0129

Status: Y N U

Seismic Walkdown Checklist (SWC)

Equipment ID No.: PBG04

Equipment Class: (5) Horizontal Pumps

Equipment Description: NORMAL CHARGING CCP

Project: Callaway SWEL

Location (Bldg, Elev, Room/Area): AUX, 1974.00 ft, 1115

Manufacturer/Model:

Instructions for Completing Checklist

This checklist may be used to document the results of the Seismic Walkdown of an item of equipment on the SWEL. The space below each of the following questions may be used to record the results of judgments and findings. Additional space is provided at the end of this checklist for documenting other comments.

Anchorage

- | | |
|--|----------------|
| 1. Is anchorage configuration verification required (i.e., is the item one of the 50% of SWEL items requiring such verification)? | No |
| 2. Is the anchorage free of bent, broken, missing or loose hardware? | Yes |
| 3. Is the anchorage free of corrosion that is more than mild surface oxidation? | Yes |
| 4. Is the anchorage free of visible cracks in the concrete near the anchors? | Yes |
| 5. Is the anchorage configuration consistent with plant documentation? (Note: This question only applies if the item is one of the 50% for which an anchorage configuration verification is required.) | Not Applicable |
| 6. Based on the above anchorage evaluations, is the anchorage free of potentially adverse seismic conditions? | Yes |

Status: Y N U

Seismic Walkdown Checklist (SWC)

Equipment ID No.: PBG04

Equipment Class: (5) Horizontal Pumps

Equipment Description: NORMAL CHARGING CCP

Interaction Effects

- 7. Are soft targets free from impact by nearby equipment or structures? Yes

- 8. Are overhead equipment, distribution systems, ceiling tiles and lighting, and masonry block walls not likely to collapse onto the equipment? Yes

- 9. Do attached lines have adequate flexibility to avoid damage? Yes

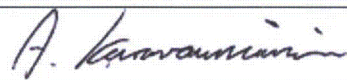
- 10. Based on the above seismic interaction evaluations, is equipment free of potentially adverse seismic interaction effects? Yes

Other Adverse Conditions

- 11. Have you looked for and found no adverse seismic conditions that could adversely affect the safety functions of the equipment? Yes

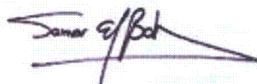
Comments

Evaluated by:



Apostolos Karavoussianis

Date: 11/16/2012



Samer El-Bahey

11/16/2012

Status: Y N U

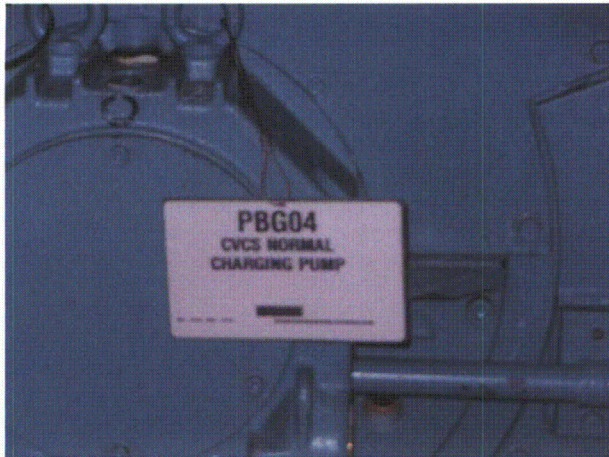
Seismic Walkdown Checklist (SWC)

Equipment ID No.: PBG04

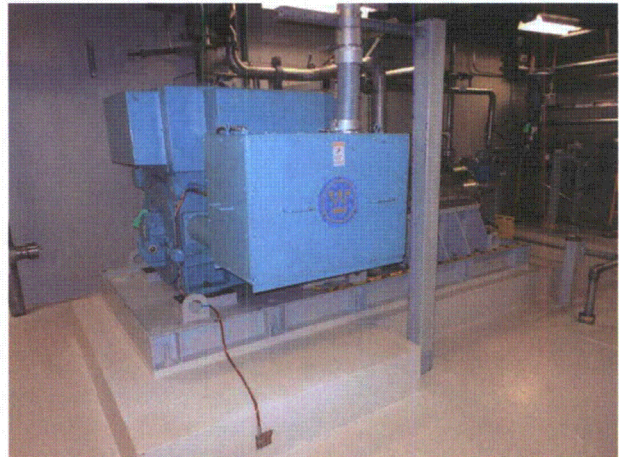
Equipment Class: (5) Horizontal Pumps

Equipment Description: NORMAL CHARGING CCP

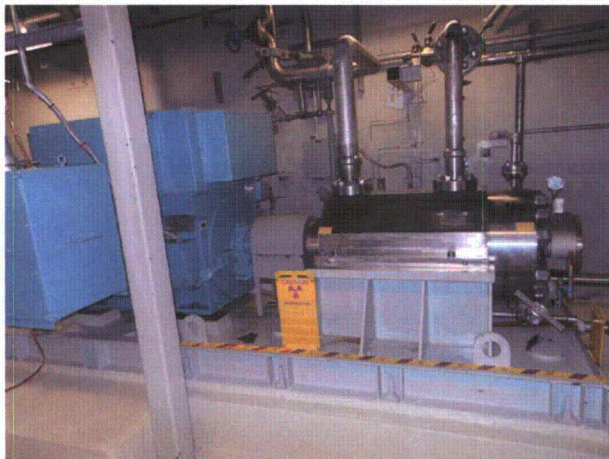
Photos



PBG040263



PBG040264



PBG040265



PBG040266

Status: Y N U

Seismic Walkdown Checklist (SWC)

Equipment ID No.: PBG04

Equipment Class: (5) Horizontal Pumps

Equipment Description: NORMAL CHARGING CCP



PBG040267