

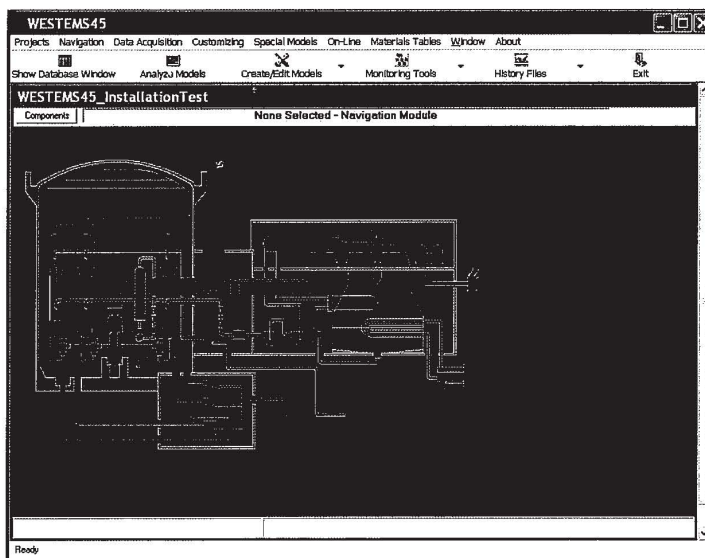
Contains Westinghouse Designated Proprietary Information
Subject to Nondisclosure Agreement
Vendor Proprietary Information

WESTEMS™ User's Manual

Version 4.5

Volume 1, Revision 0

Online Monitoring and Diagnostics Manual



This document is the property of and contains Proprietary Information owned by Westinghouse Electric Company LLC and/or its subcontractors and suppliers. It is transmitted to you in confidence and trust, and you agree to treat this document in strict accordance with the terms and conditions of the agreement under which it was provided to you.

Westinghouse Electric Company LLC
P.O. Box 355
Pittsburgh, PA 15230-0355
© 2007 Westinghouse Electric Company LLC
All Rights Reserved

United States Nuclear Regulatory Commission Official Hearing Exhibit In the Matter of: Entergy Nuclear Operations, Inc. (Indian Point Nuclear Generating Units 2 and 3)	ASLBP #: 07-858-03-LR-BD01	Identified: 10/15/2012
	Docket #: 05000247 05000286	Withdrawn: Stricken:
	Exhibit #: NYS000358-PUB-00-BD01	
	Admitted: 10/15/2012	
	Rejected: Other:	

