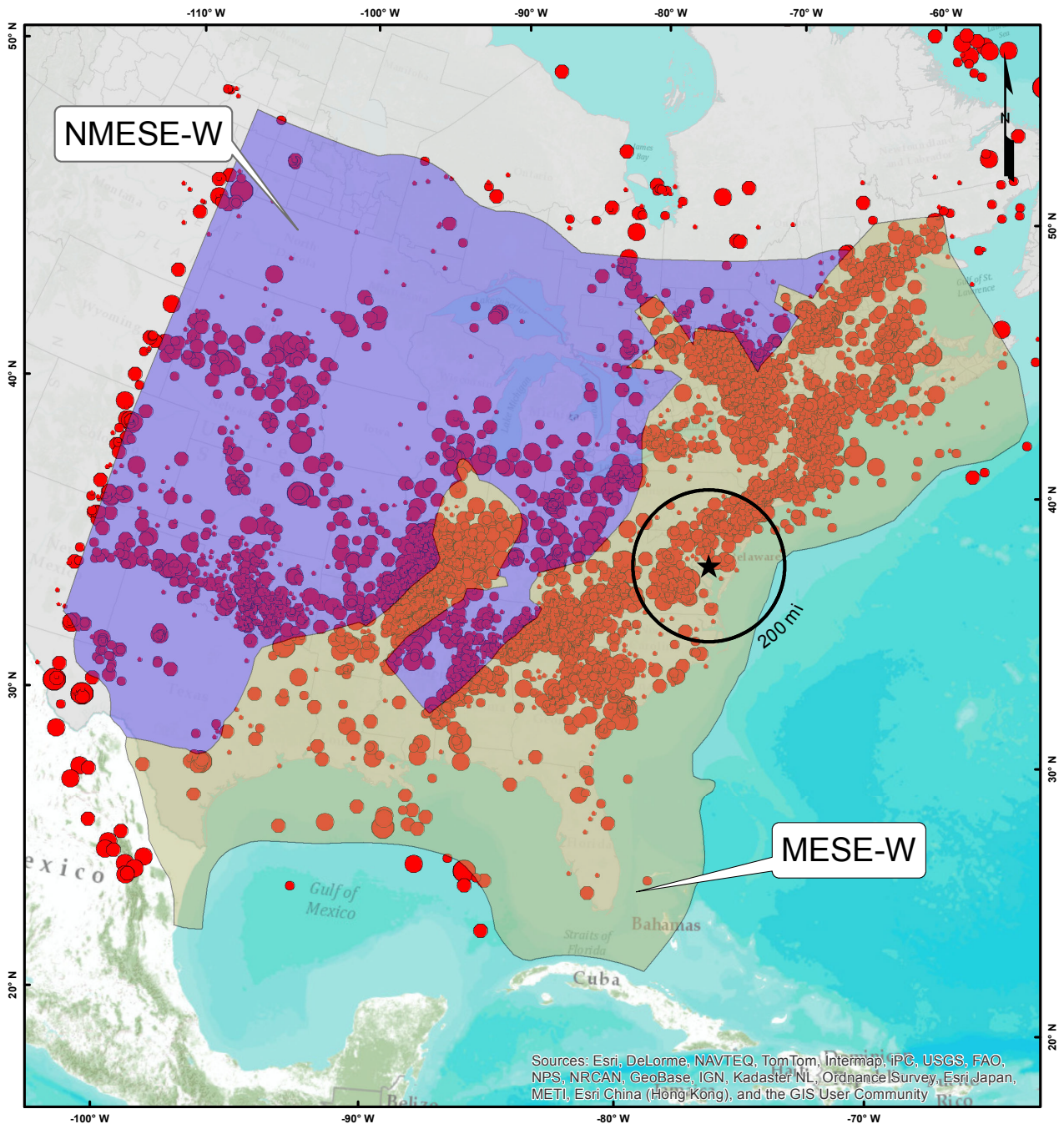


Figure 2.5-48— {Mesozoic Extended (MESE-W) and Non-Extended (NMESE-W) Mmax Zones for the "Wide" Interpretation}

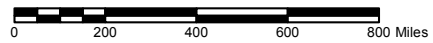


Legend

- ★ Site
- 200 Mile Radius
- Mesozoic Extended (wide)
- Mesozoic Non-Extended (wide)

Earthquake Magnitude (E[M])

- 2.2 - 2.7
- 2.8 - 3.1
- 3.2 - 3.8
- 3.9 - 4.8
- ≥4.9

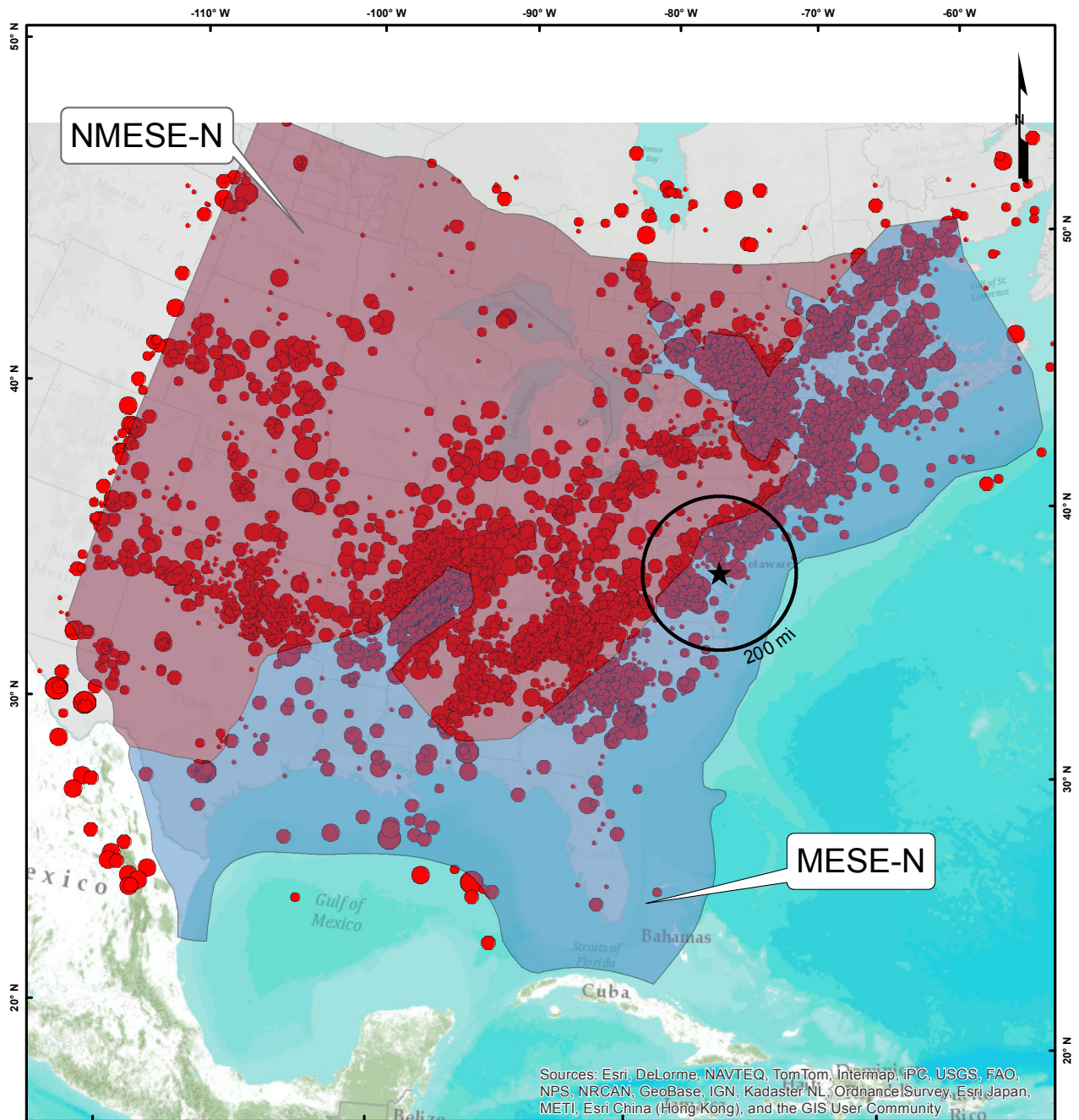


DATUM: NAD 83

Reference(s):
1. EPRI/DOE/NRC (2012)

09-4179-GIS-A006

Figure 2.5-49— {Mesozoic Extended (MESE-N) and Non-Extended (NMESE-N) Mmax Zones for the "Narrow" Interpretation}



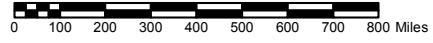
Sources: Esri, DeLorme, NAVTEQ, TomTom, Intermap, iPC, USGS, FAO, NPS, NRCAN, GeoBase, IGN, Kadaster NL, Ordnance Survey, Esri Japan, METI, Esri China (Hong Kong), and the GIS User Community

Legend

- ★ Site
- 200 Mile Radius
- Mesozoic Extended (narrow)
- Mesozoic Non-Extended (narrow)

Earthquake Magnitude (E[M])

- 2.2 - 2.7
- 2.8 - 3.1
- 3.2 - 3.8
- 3.9 - 4.8
- ≥4.9

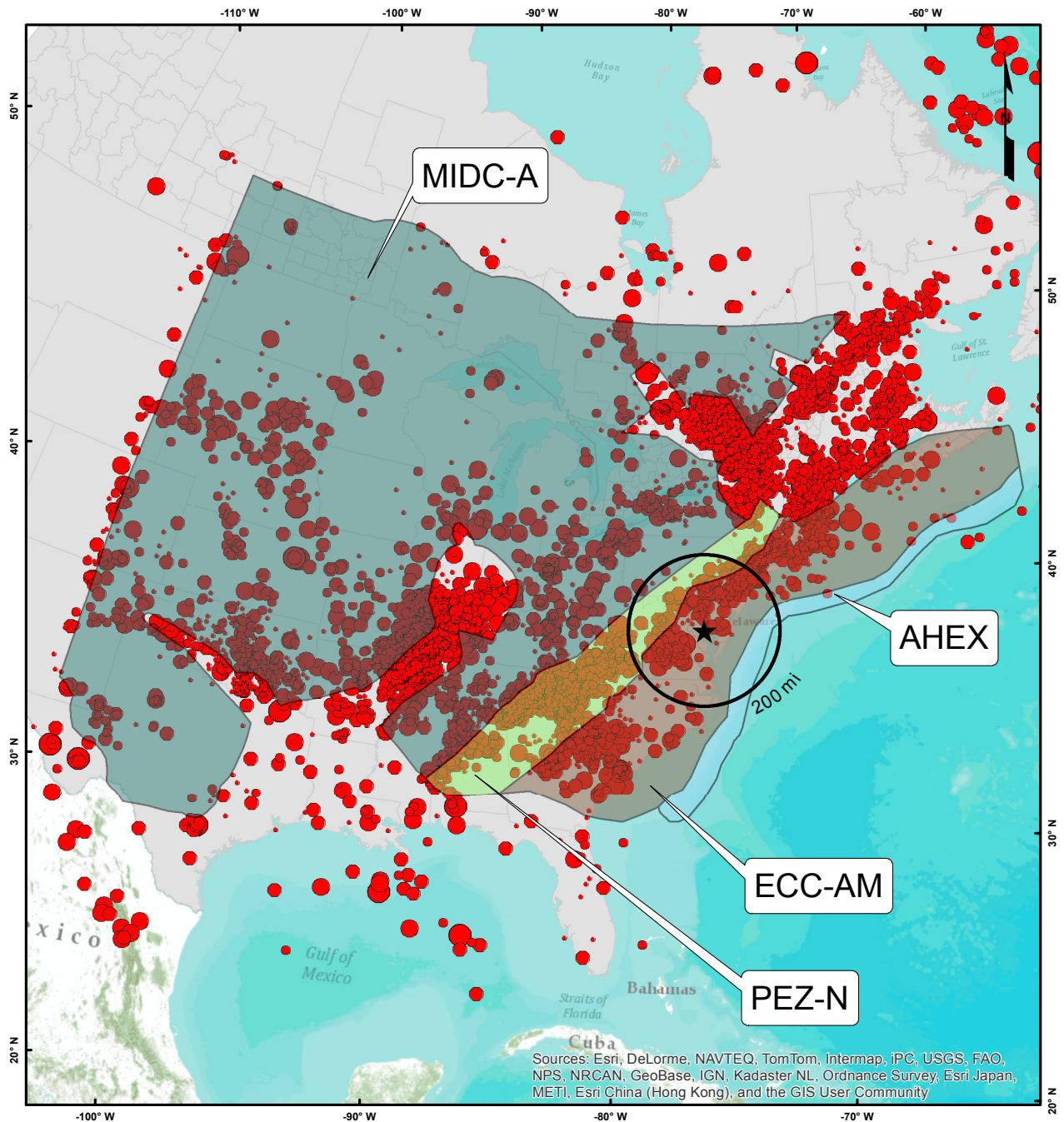


DATUM: NAD 83

Reference(s):
1. EPRI/DOE/NRC (2012)

09-4179-GIS-A007

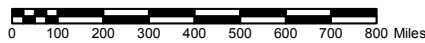
Figure 2.5-50— {Seismotectonic Zones Showing the Case where the Rough Creek Graben is not Part of the Reelfoot Rift (RR) and the Paleozoic Extended Zone is Narrow (PEZ-N)}



Sources: Esri, DeLorme, NAVTEQ, TomTom, Intermap, iPC, USGS, FAO, NPS, NRCAN, GeoBase, IGN, Kadaster NL, Ordnance Survey, Esri Japan, METI, Esri China (Hong Kong), and the GIS User Community

Legend

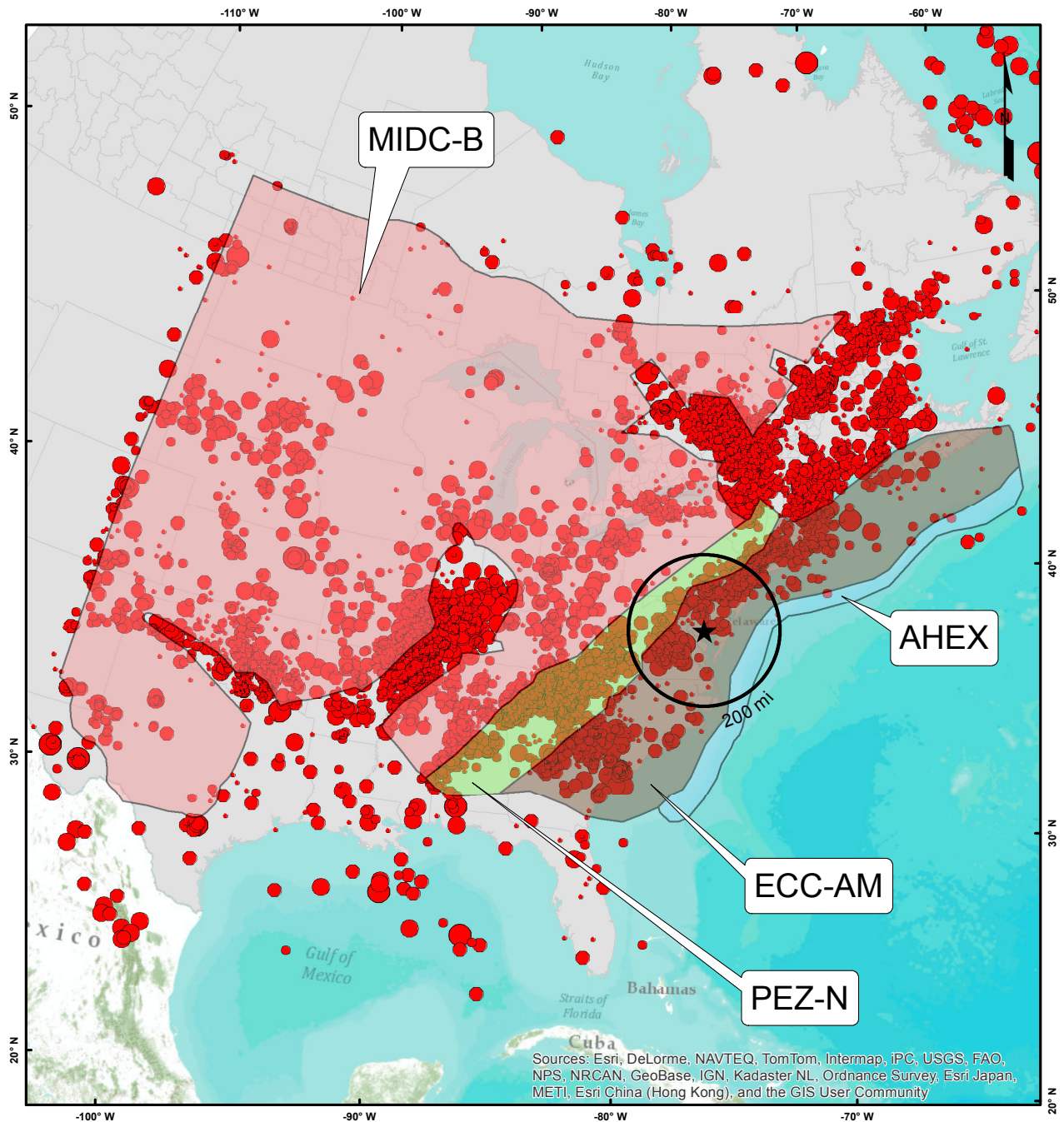
- ★ Site
 - 200 Mile Radius
 - AHEX
 - ECC-AM
 - MIDC-A
 - PEZ-N
- | Earthquake Magnitude (E[M]) | |
|-----------------------------|-----------|
| • | 2.2 - 2.7 |
| • | 2.8 - 3.1 |
| • | 3.2 - 3.8 |
| • | 3.9 - 4.8 |
| • | >=4.9 |



DATUM: NAD 83

Reference(s):
1. EPRI/DOE/NRC (2012)
09-4179-GIS-A008

Figure 2.5-51— {Seismotectonic Zones Showing the Case where the Rough Creek Graben is Part of the Reelfoot Rift (RR-RCG) and the Paleozoic Extended Zone is Narrow (PEZ-N)}



Legend

- ★ Site
- 200 Mile Radius
- AHEX
- ECC-AM
- MIDC-B
- PEZ-N

Earthquake Magnitude (E[M])

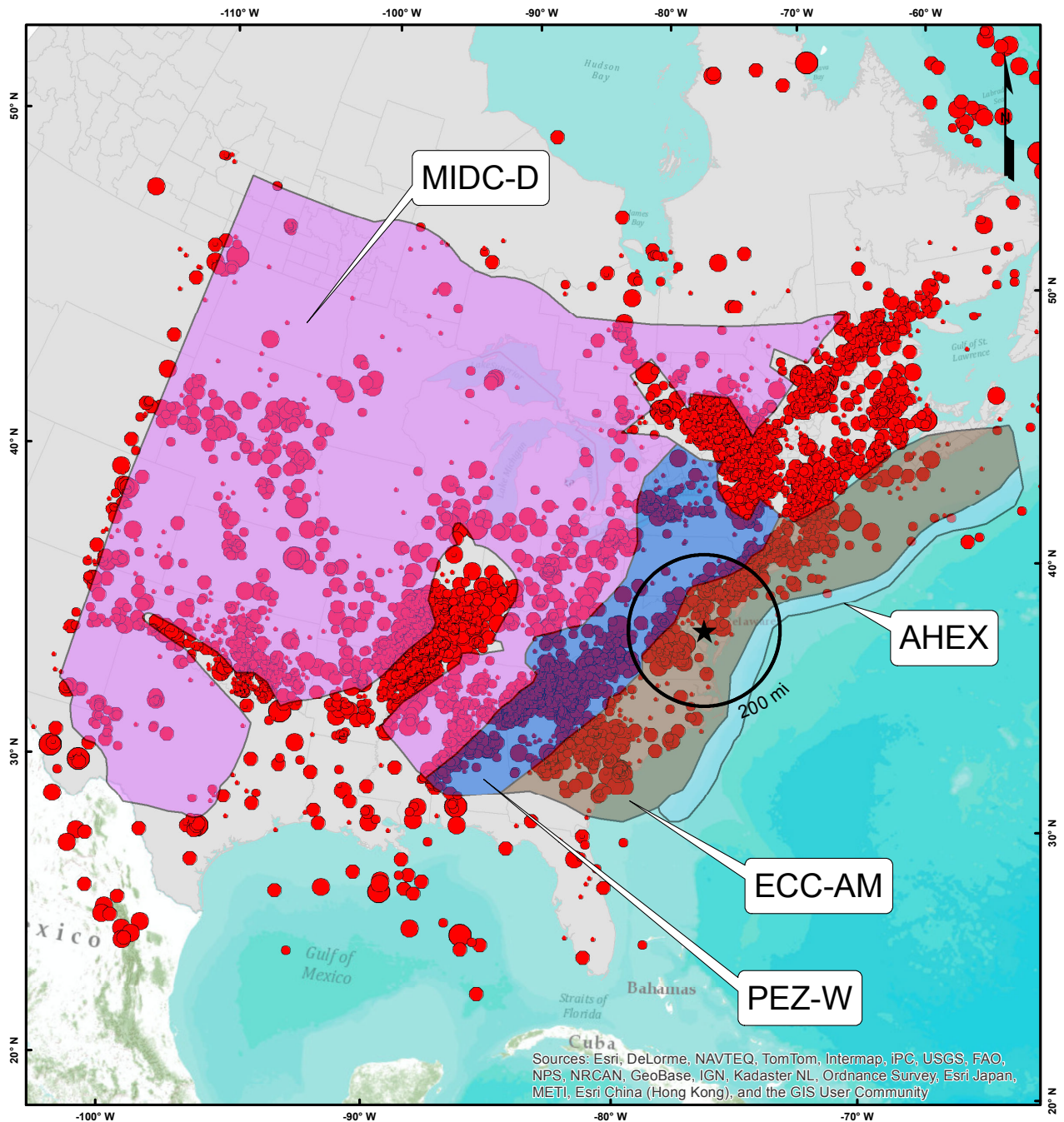
- 2.2 - 2.7
- 2.8 - 3.1
- 3.2 - 3.8
- 3.9 - 4.8
- >=4.9



DATUM: NAD 83

Reference(s):
1. EPRI/DOE/NRC (2012)
09-4179-GIS-A009

Figure 2.5-52— {Seismotectonic Zones Showing the Case where the Rough Creek Graben is not Part of the Reelfoot Rift (RR) and the Paleozoic Extended Zone is Wide (PEZ-W)}



Legend

- ★ Site
- 200 Mile Radius
- AHEX
- ECC-AM
- MIDC-D
- PEZ-W

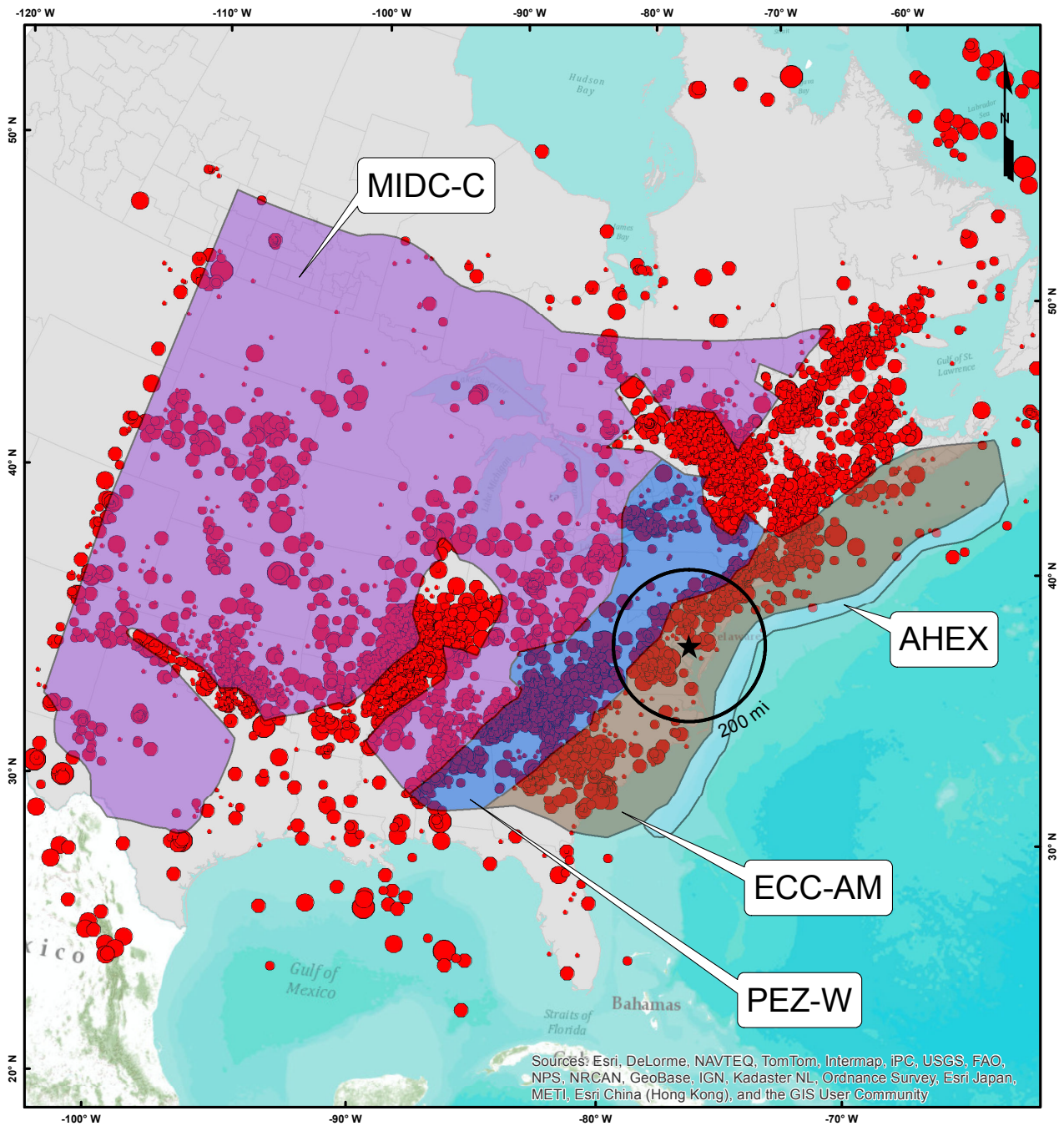
Earthquake Magnitude (E[M])

- 2.2 - 2.7
- 2.8 - 3.1
- 3.2 - 3.8
- 3.9 - 4.8
- ≥4.9

Reference(s):
1. EPR/DOE/NRC (2012)

09-4179-GIS-A011

Figure 2.5-53— {Seismotectonic Zones Showing the Case where the Rough Creek Graben is Part of the Reelfoot Rift (RR-RCG) and the Paleozoic Extended Zone is Wide (PEZ-W)}



Legend

- ★ Site
- 200 Mile Radius
- AHEX
- ECC-AM
- MIDC-C
- PEZ-W

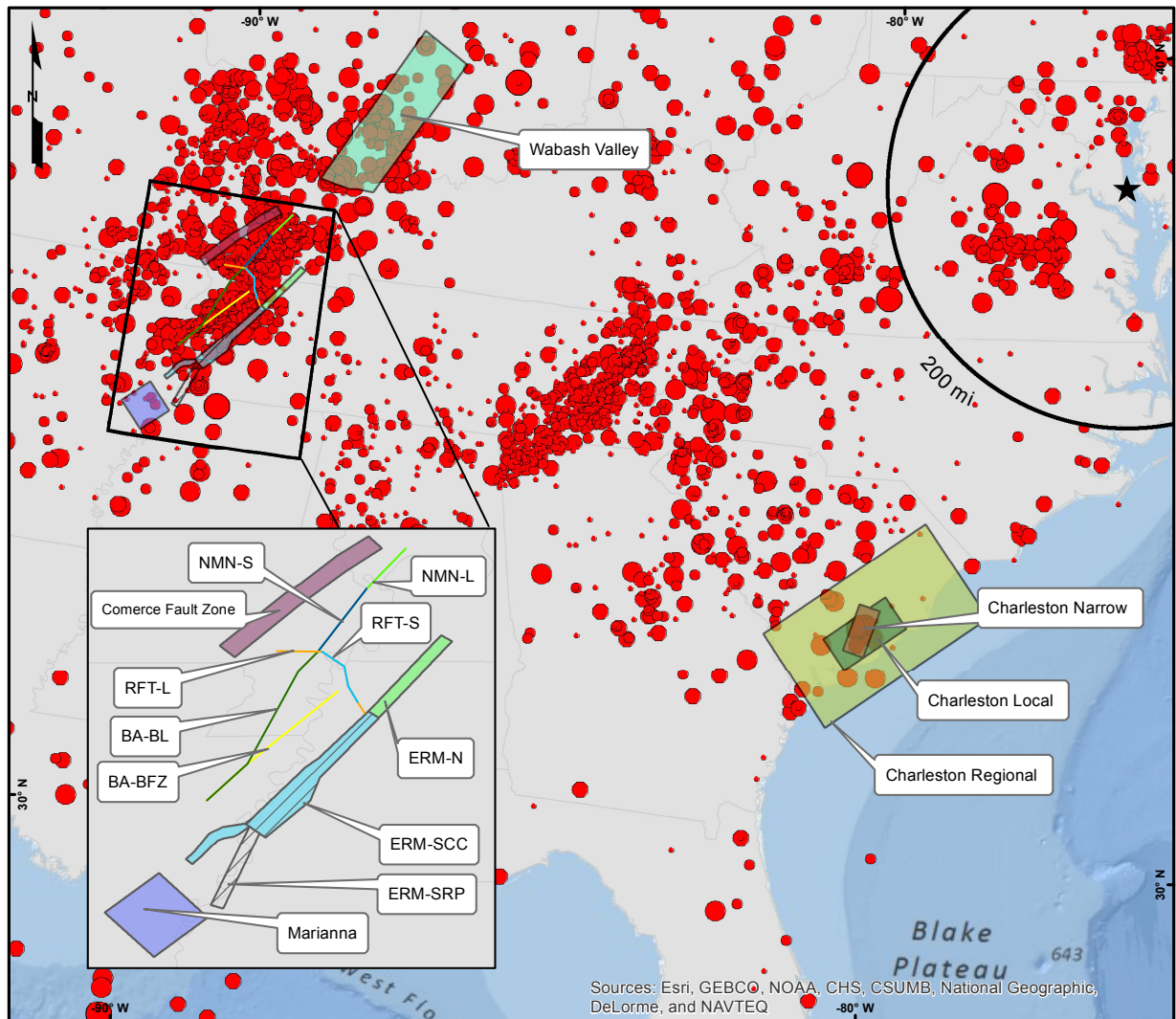
Earthquake Magnitude (E[M])

- 2.2 - 2.7
- 2.8 - 3.1
- 3.2 - 3.8
- 3.9 - 4.8
- >=4.9

DATUM: NAD 83

Reference(s):
 1. EPRI/DOE/NRC (2012)
 09-4179-GIS-A010

Figure 2.5-54— {RLME Sources Considered for the PSHA of the CCNPP Unit 3 Site}



Sources: Esri, GEBCO, NOAA, CHS, CSUMB, National Geographic, DeLorme, and NAVTEQ

Legend

DATUM: NAD 83



- ★ Site
- 200 Mile Radius

Fault

- NMN Extended: NMN-L
- NMN Short: NMN-S
- NMS: BA-BFZ
- NMS: BA-BL
- RFT Extended: RFT-L
- RFT Short: RFT-S

Source Zone

- Commerce Fault Zone
- ERM-N
- ERM-SCC
- ERM-SRP
- Marianna
- Charleston-Local
- Charleston - Narrow
- Charleston - Regional
- Wabash Valley

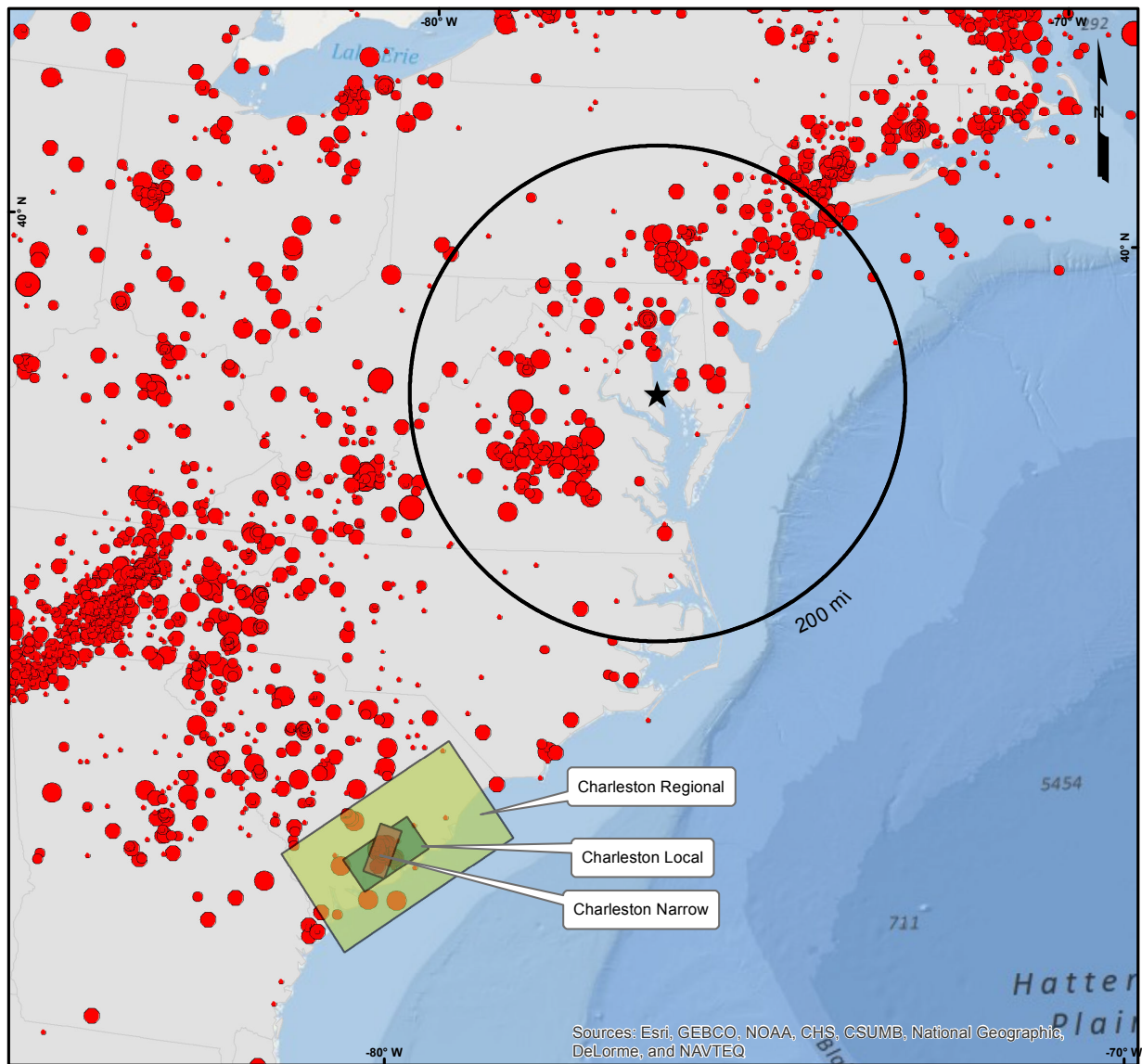
Earthquake Magnitude (E[M])

- 2.2 - 2.7
- 2.8 - 3.1
- 3.2 - 3.8
- 3.9 - 4.8
- >=4.9

Reference(s):
1. EPR/DOE/NRC (2012)

09-4179-GIS-A012

Figure 2.5-55— {Alternative geometries of Charleston RLME Source}



Legend

- ★ Site
- 200-mile Radius
- Charleston - Local
- Charleston - Narrow
- Charleston - Regional

Earthquake Magnitude (E[M])

- 2.2 - 2.7
- 2.8 - 3.1
- 3.2 - 3.8
- 3.9 - 4.8
- ≥4.9

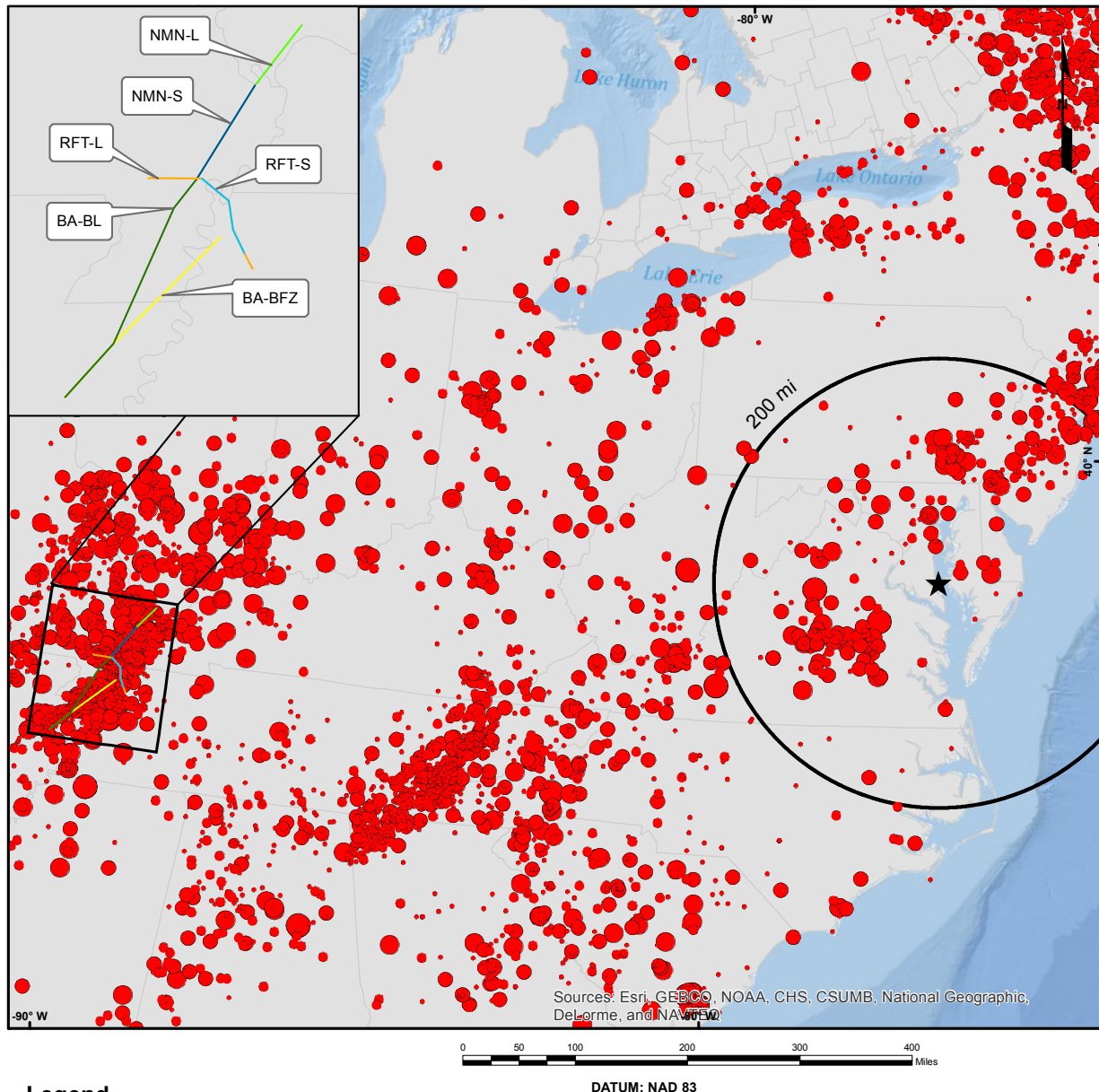
DATUM: WGS84



Reference(s):
1. EPR/DOE/NRC (2012)

09-4179-GIS-A013

Figure 2.5-56— {New Madrid Fault System RLME Source}



Legend

- | | |
|-----------------------|------------------------------------|
| ★ Site | Earthquake Magnitude (E[M]) |
| Fault | • 2.2 - 2.7 |
| — NMN Extended: NMN-L | • 2.8 - 3.1 |
| — NMN Short: NMN-S | • 3.2 - 3.8 |
| — NMS: BA-BFZ | • 3.9 - 4.8 |
| — NMS: BA-BL | • ≥4.9 |
| — RFT Extended: RFT-L | □ 200 Mile Radius |
| — RFT Short: RFT-S | |

Reference(s):
1. EPRI/DOE/NRC (2012)

09-4179-GIS-A016