

Figure 2.5-1— {Map of Physiographic Province}

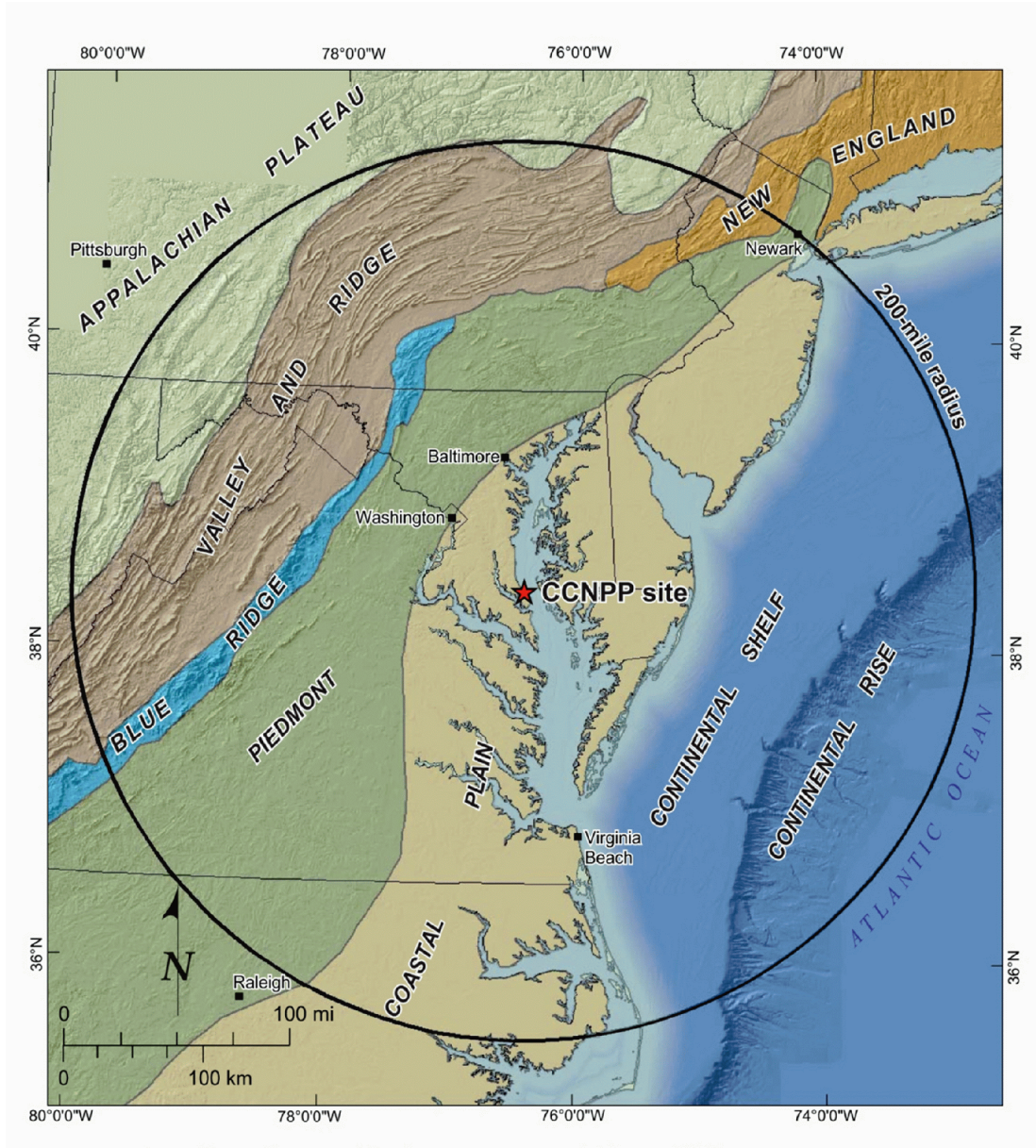


Figure 2.5-2 — {Site Vicinity Topographic Map 25-Mile (40-Km) Radius}

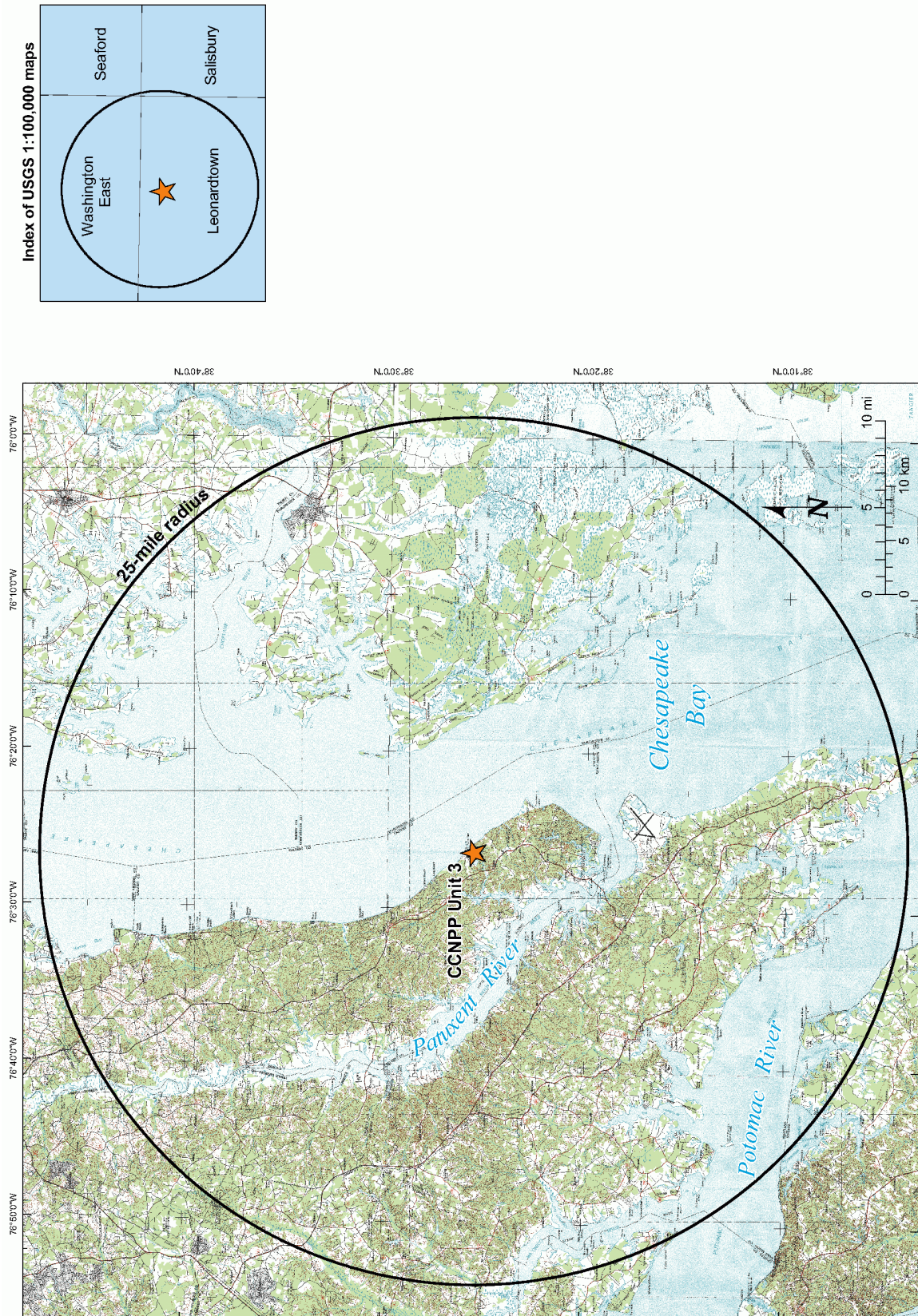


Figure 2.5-3— {Site Area Topographic Map 5-Mile (8-Km) Radius}



Base map: Leonardtown 30' x 60' U.S. Geological Survey Topographic Map

Figure 2.5-4—{Site Topographic Map 0.6-Mile (1-Km) Radius}



Figure 2.5-5— {Regional Geologic Map 200-Mile (320-Km) Radius}

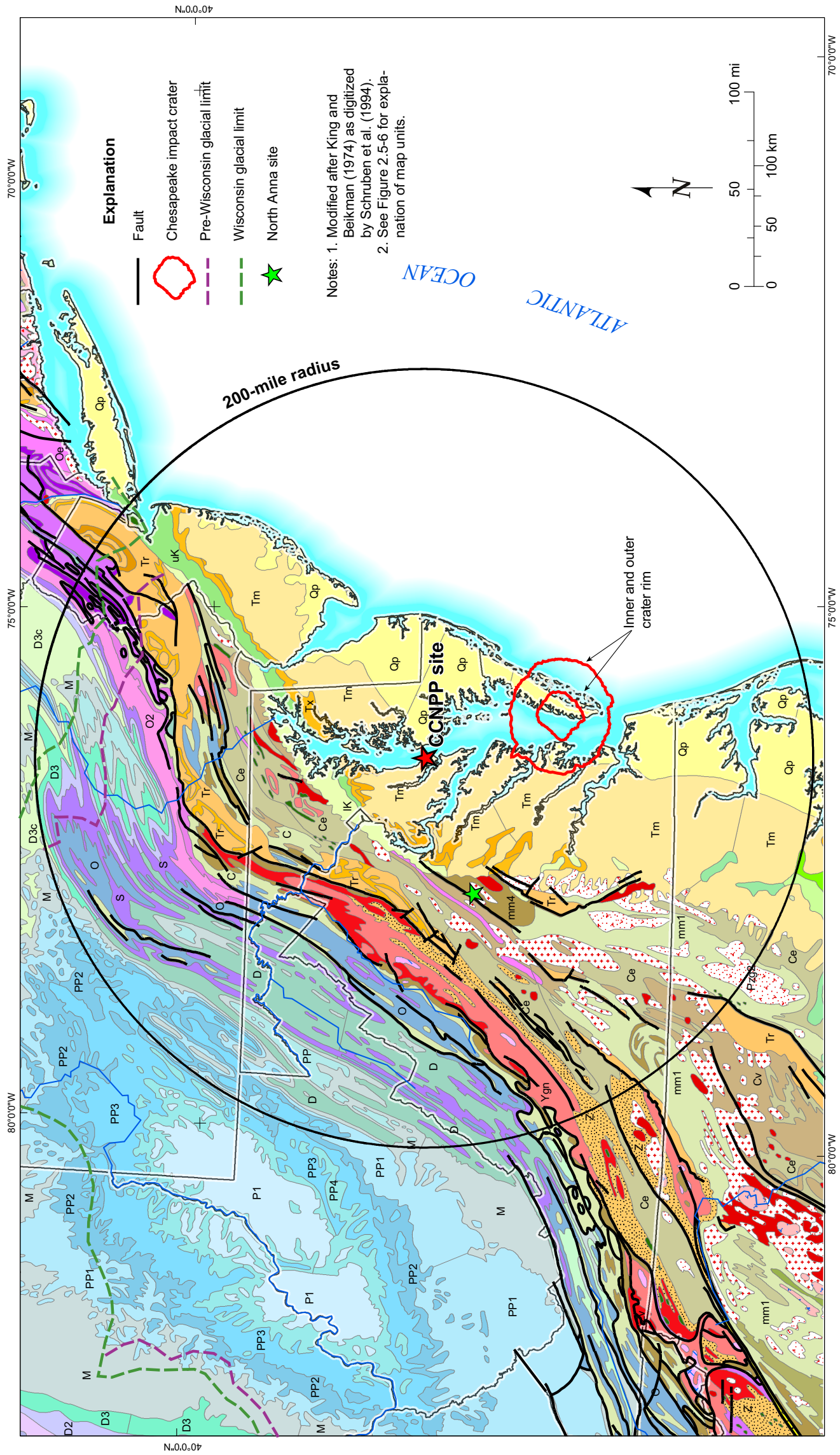


Figure 2.5-6— {Regional Geologic Map 200-Mile (320-Km) Radius Explanation}

Stratified Sequence		Continental Deposits	Eugeosynclinal Deposits	Volcanic Rocks	Plutonic and Intrusive Rocks	Metamorphic Rocks
Cenozoic	Quaternary (Q)					
	Tertiary (T)					
Mesozoic	Cretaceous (K)	Upper Cretaceous				
		Lower Cretaceous				
	Triassic (Tr)					
	Permian (P)					
Paleozoic	Pennsylvanian (PP)	Upper				
		Middle				
		Lower				
	Mississippian (M)					
Devonian (D)	Upper Devonian					
	Middle Devonian					
	Lower Devonian					
Silurian (S)	Middle Ordovician-Mohawkian					
	Lower Ordovician-Canadian					
Cambrian (C)						
Precambrian	Z					
	Y					

Stratified Sequence	Continental Deposits	Eugeosynclinal Deposits	Volcanic Rocks	Plutonic and Intrusive Rocks	Metamorphic Rocks
Quaternary (Q)					
Tertiary (T)					
Cretaceous (K)					
Triassic (Tr)					
Permian (P)					
Pennsylvanian (PP)					
Mississippian (M)					
Devonian (D)					
Silurian (S)					
Ordovician (O)					
Cambrian (C)					
Precambrian	Z				
	Y				

Stratified Sequence	Continental Deposits	Eugeosynclinal Deposits	Volcanic Rocks	Plutonic and Intrusive Rocks	Metamorphic Rocks
Quaternary (Q)					
Tertiary (T)					
Cretaceous (K)					
Triassic (Tr)					
Permian (P)					
Pennsylvanian (PP)					
Mississippian (M)					
Devonian (D)					
Silurian (S)					
Ordovician (O)					
Cambrian (C)					
Precambrian	Z				
	Y				

Stratified Sequence	Continental Deposits	Eugeosynclinal Deposits	Volcanic Rocks	Plutonic and Intrusive Rocks	Metamorphic Rocks
Quaternary (Q)					
Tertiary (T)					
Cretaceous (K)					
Triassic (Tr)					
Permian (P)					
Pennsylvanian (PP)					
Mississippian (M)					
Devonian (D)					
Silurian (S)					
Ordovician (O)					
Cambrian (C)					
Precambrian	Z				
	Y				

Stratified Sequence	Continental Deposits	Eugeosynclinal Deposits	Volcanic Rocks	Plutonic and Intrusive Rocks	Metamorphic Rocks
Quaternary (Q)					
Tertiary (T)					
Cretaceous (K)					
Triassic (Tr)					
Permian (P)					
Pennsylvanian (PP)					
Mississippian (M)					
Devonian (D)					
Silurian (S)					
Ordovician (O)					
Cambrian (C)					
Precambrian	Z				
	Y				

Stratified Sequence	Continental Deposits	Eugeosynclinal Deposits	Volcanic Rocks	Plutonic and Intrusive Rocks	Metamorphic Rocks
Quaternary (Q)					
Tertiary (T)					
Cretaceous (K)					
Triassic (Tr)					
Permian (P)					
Pennsylvanian (PP)					
Mississippian (M)					
Devonian (D)					
Silurian (S)					
Ordovician (O)					
Cambrian (C)					
Precambrian	Z				
	Y				

Figure 2.5-7 — {Physiographic Map of Maryland}

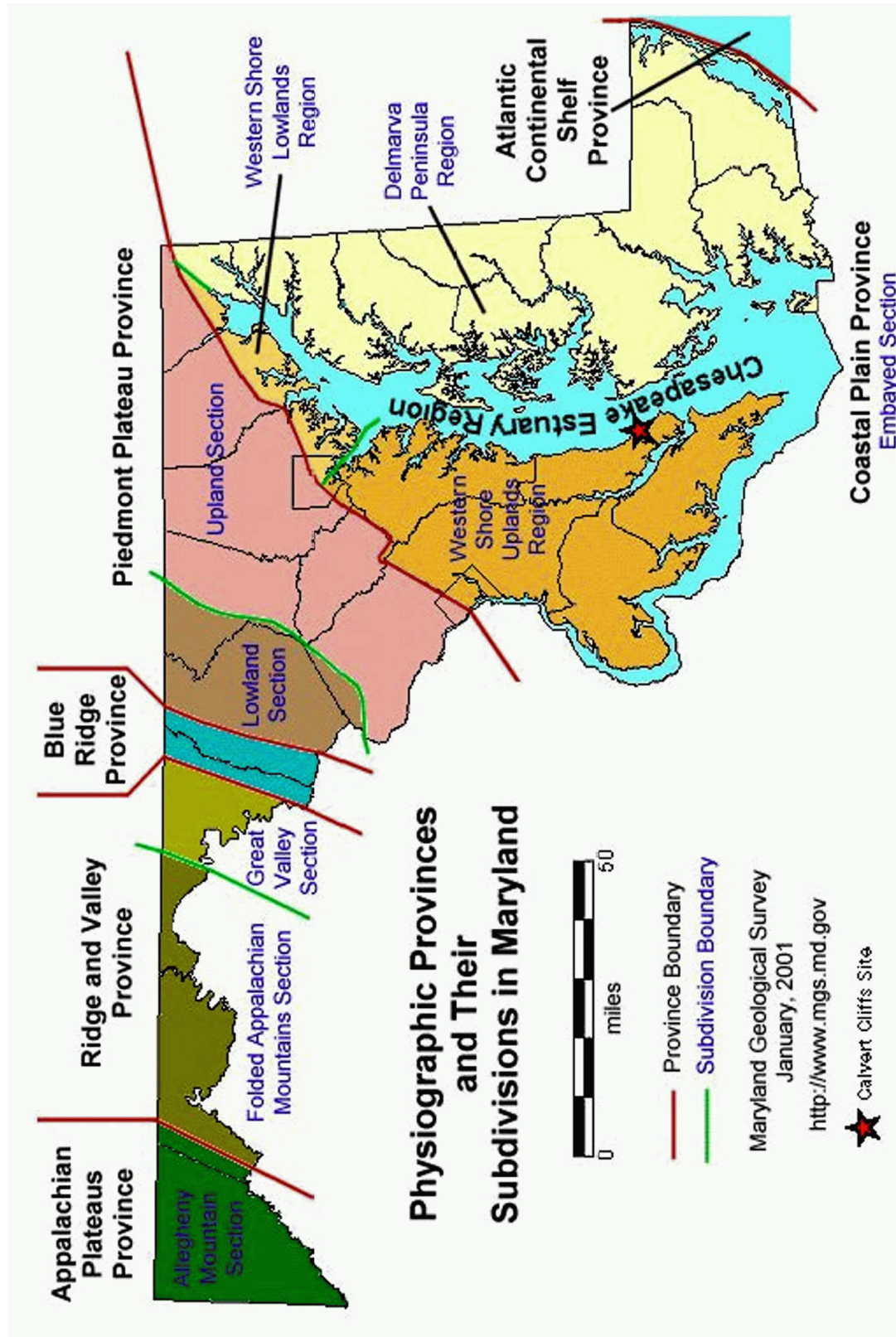


Figure 2.5-8— {Evolution of the Appalachian Orogen}

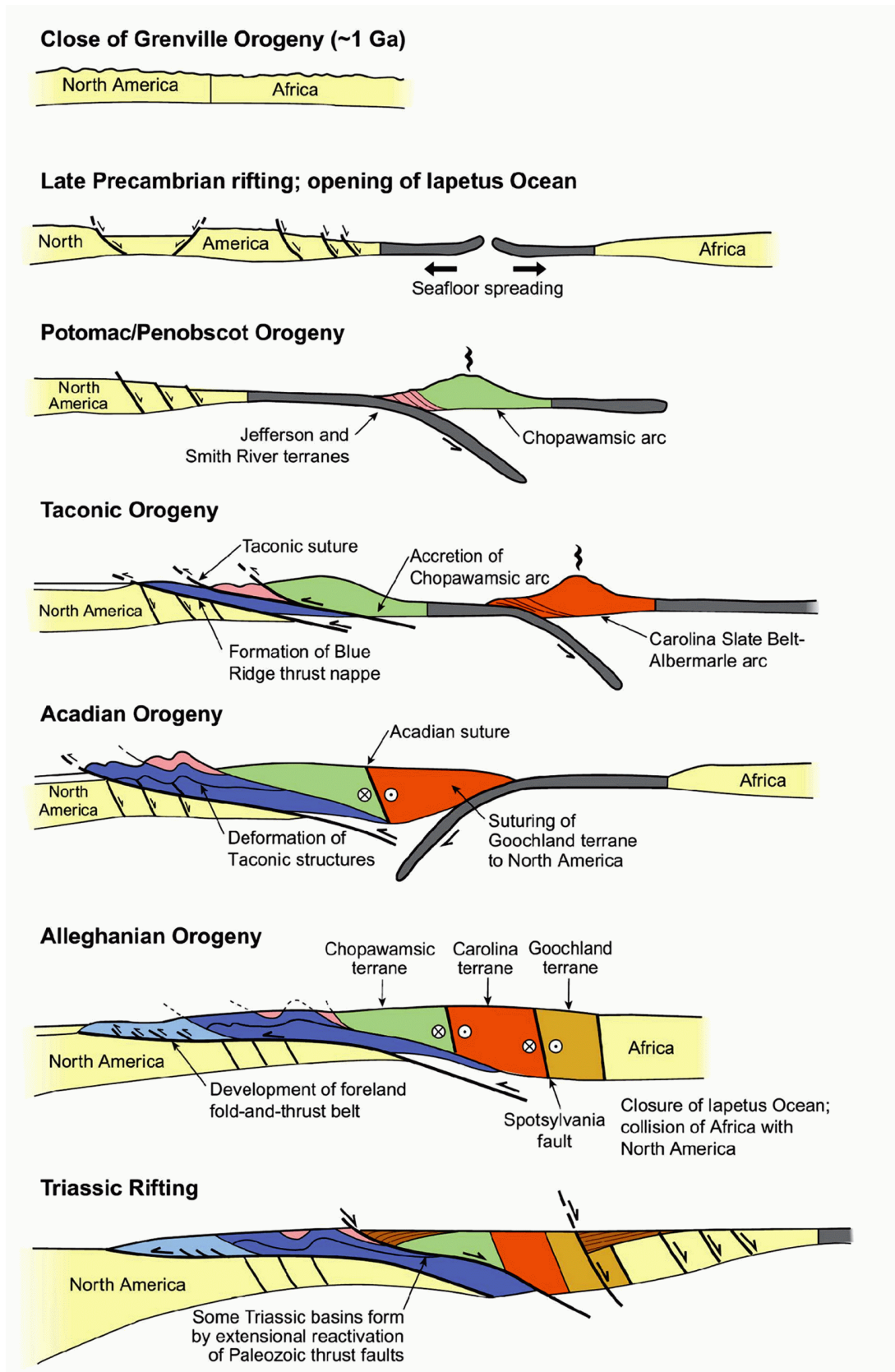


Figure 2.5-9— {General Technostatigraphic Terrane Map 200-mile Radius (modified from Horton 1991)}

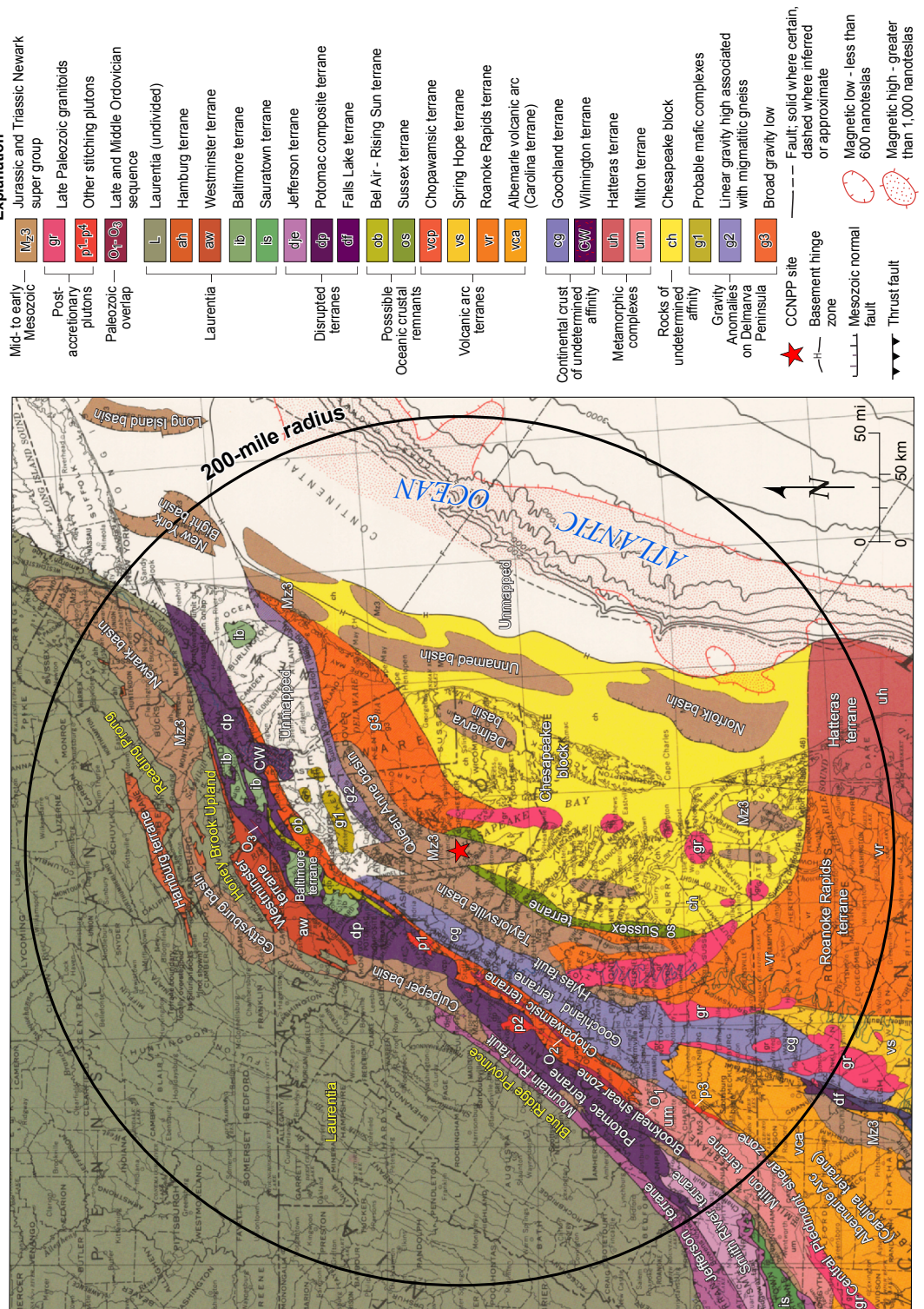
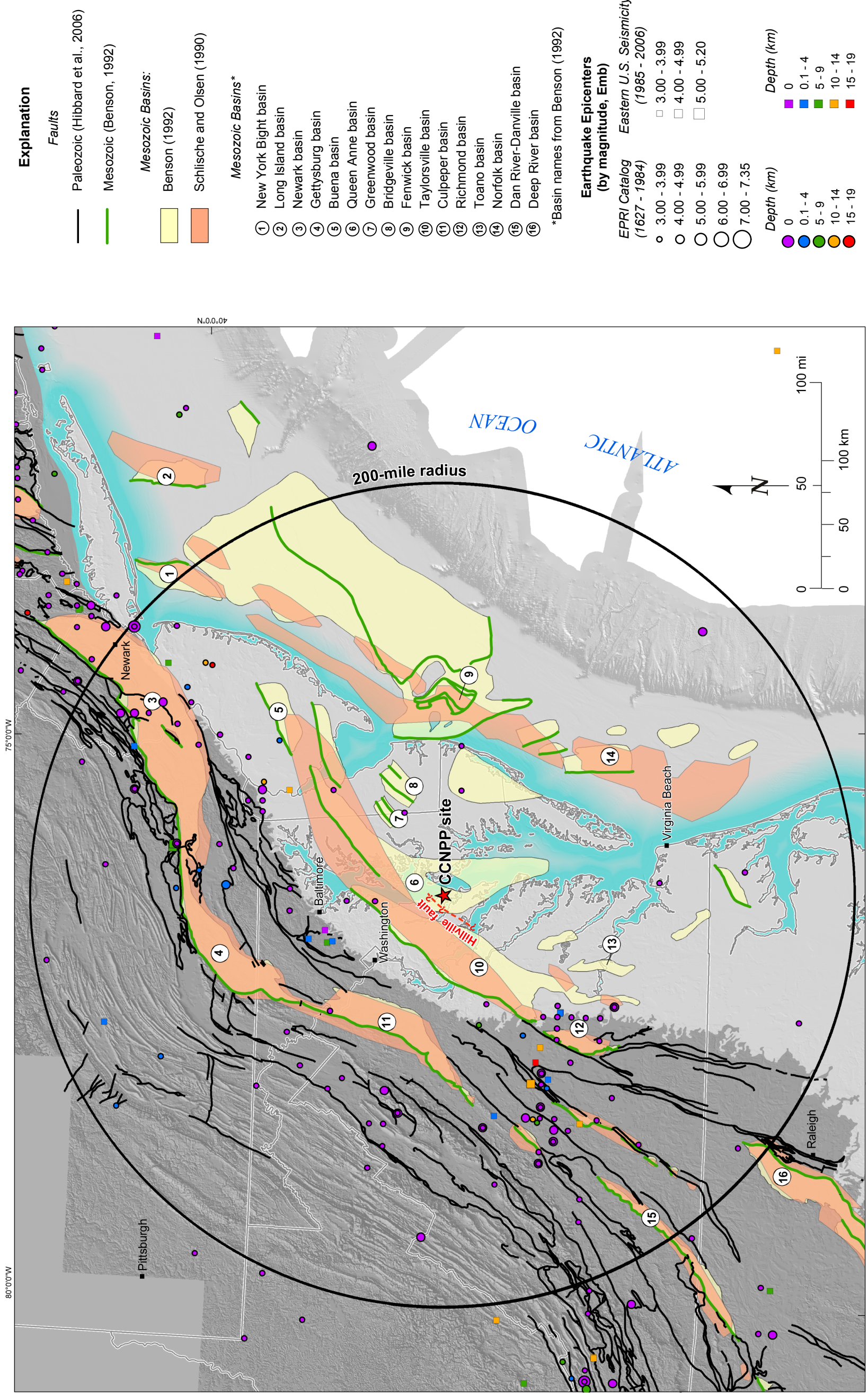


Figure 2.5-10 — {Map of Mesozoic Basins}



Note: Emb is an equivalent body wave magnitude explained in Section 2.5.2.1.