

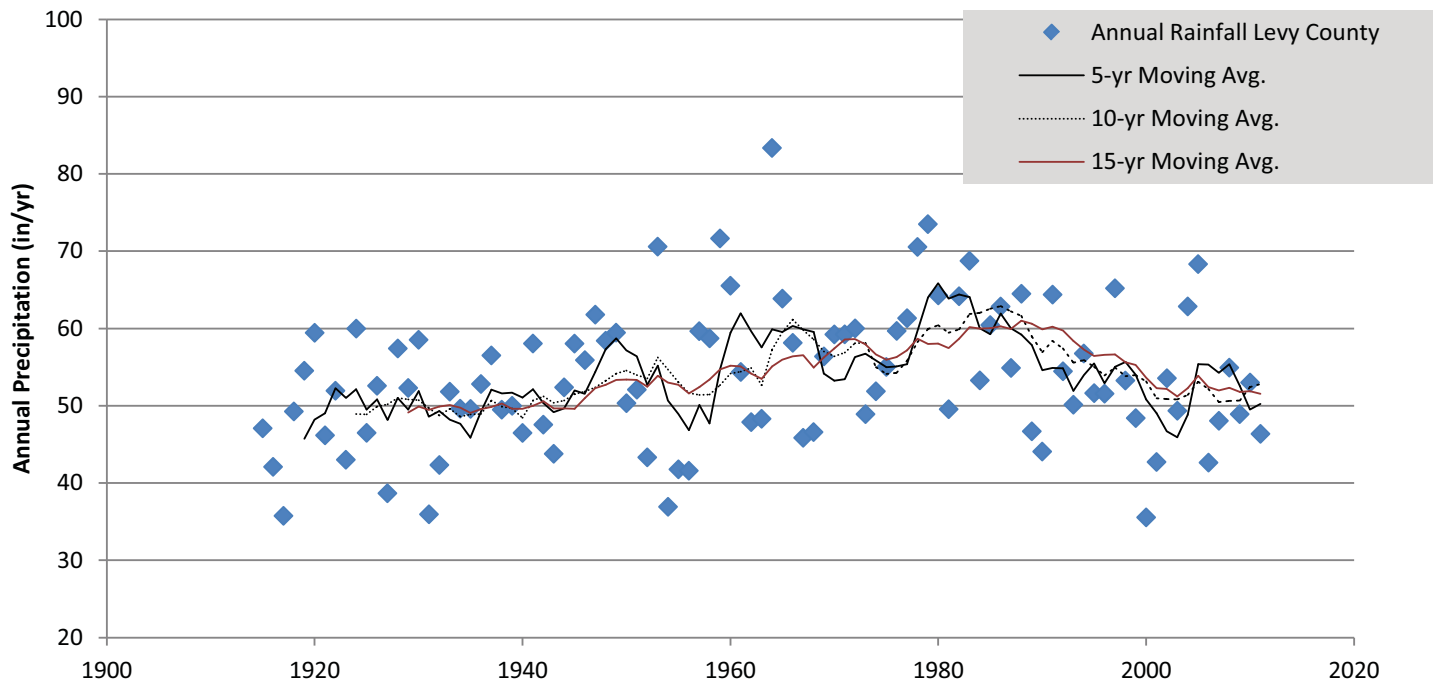
In the Matter of: Progress Energy Florida, Inc.
(Levy County Nuclear Power Plant, Units 1 and 2)



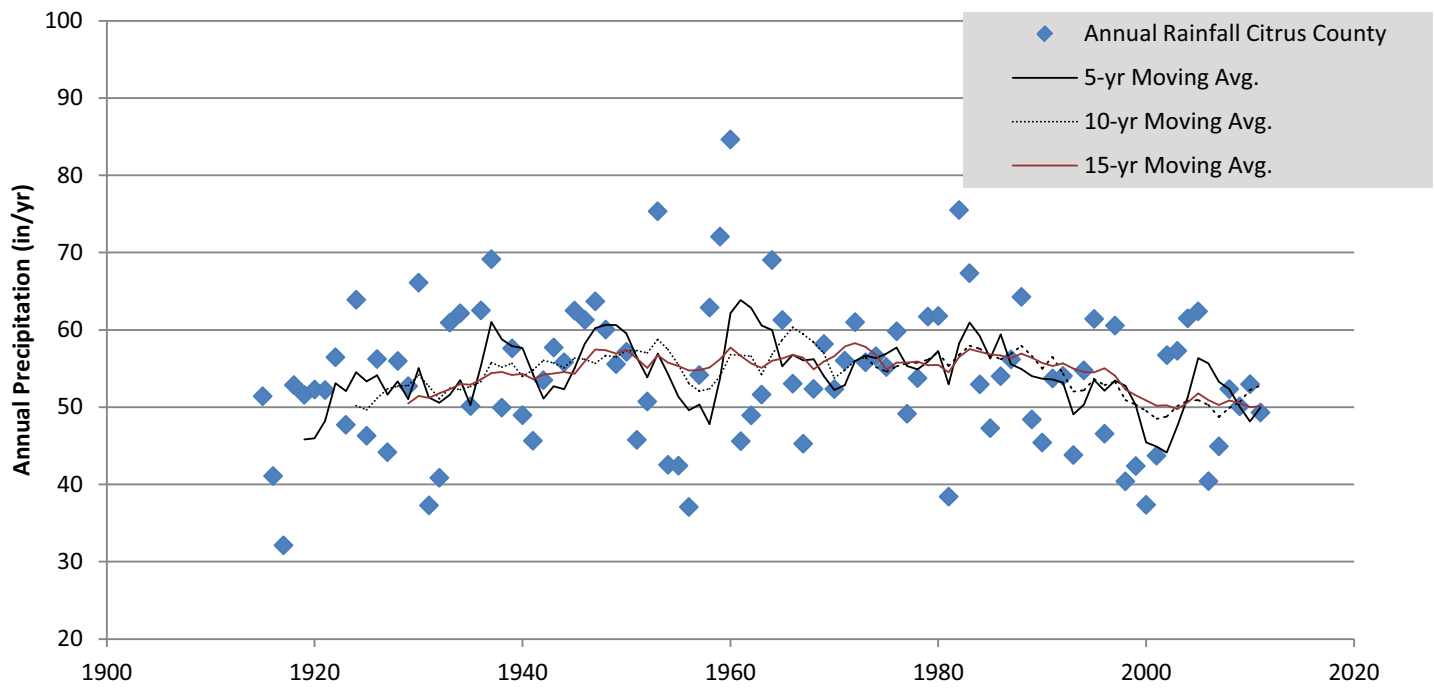
ASLBP #: 09-879-04-COL-BD01
Docket #: 05200029 | 05200030
Exhibit #: PEF017-00-BD01
Admitted: 10/31/2012
Rejected:
Other:

Identified: 10/31/2012
Withdrawn:
Stricken:

Annual Rainfall Levy County, FL (1915 - 2011)



Annual Rainfall Citrus County, FL (1915 - 2011)



Source: http://www.swfwmd.state.fl.us/data/wmdbweb/rainfall_data_summaries.php

Levy County Stats

Month	January	February	March	April	May	June	July	August	September	October	November	December	Annual
MIN	0.06	0.46	0.13	0.12	0.19	1.30	3.59	3.09	0.57	0.01	0.15	0.08	35.55
MEAN	3.15	3.33	3.97	2.97	3.24	6.78	8.09	8.23	5.95	2.96	2.08	2.87	53.68
MAX	11.20	10.74	12.46	9.20	11.52	13.80	15.49	15.73	18.15	11.27	8.10	12.07	83.36

Citrus County Stats

Month	January	February	March	April	May	June	July	August	September	October	November	December	Annual
MIN	0.00	0.12	0.01	0.01	0.20	0.82	2.87	1.09	0.68	0.08	0.01	0.13	32.12
MEAN	2.76	2.97	4.03	2.65	3.57	7.70	8.48	8.25	6.13	2.88	1.89	2.57	53.90
MAX	9.63	9.99	16.13	11.26	13.04	19.54	16.72	17.97	17.52	10.17	8.57	10.88	84.64

Source: http://www.swfwmd.state.fl.us/data/wmdbweb/rainfall_data_summaries.php