

In the Matter of: Progress Energy Florida, Inc.
(Levy County Nuclear Power Plant, Units 1 and 2)



ASLBP #: 09-879-04-COL-BD01
Docket #: 05200029 | 05200030
Exhibit #: PEF215-00-BD01
Admitted: 10/31/2012
Rejected:
Other:

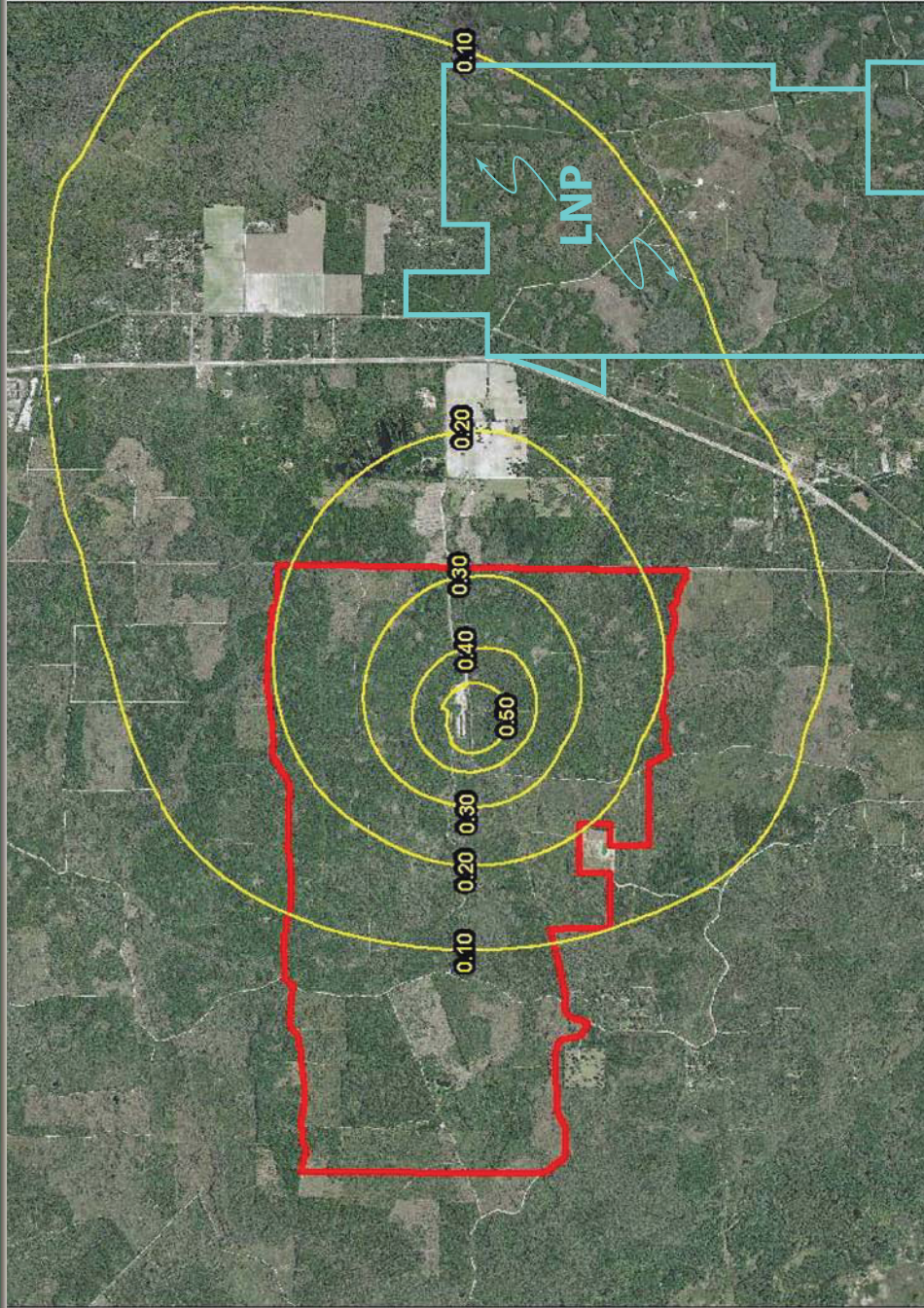
Identified: 10/31/2012
Withdrawn:
Stricken:

Progress Energy Florida
Levy Nuclear Plant

Simulated Upper Floridan Aquifer
Drawdown (ft) from Tarmac Mine Well
PEF215

June 26, 2012 Rev 2

Drawdown from Floridan Aquifer Withdrawals



Source: Levy County Commission Meeting. May 3, 2011