



October 23, 2012

ATTN: Document Control Desk
U.S. Nuclear Regulatory Commission
Washington, DC 20555-001

SHINE Medical Technologies, Inc.
SMT-2012-032
Project No. 0792

Subject: Request to Withhold Information from Public Disclosure

A pre-application meeting is scheduled for November 8, 2012 between SHINE Medical Technologies, Inc. (SHINE) and the U.S. Nuclear Regulatory Commission (NRC) to discuss the SHINE organization, experience and qualifications; the content of the construction permit and operating license applications; the Target Solution Vessel (TSV) processes and supporting systems; the radioisotope production facility systems and processes; and the schedule pertinent to the SHINE construction permit and operating license applications. The purpose of this letter is to request that certain portions of the SHINE presentation materials that will be used at this meeting be withheld from public disclosure in accordance with 10 CFR 2.390.

Enclosure 1 provides the slides to be used in the closed portion of the meeting and contain proprietary information held in confidence by SHINE. SHINE requests that the NRC withhold this information from public disclosure in accordance with the requirements of 10 CFR 2.390(a)(4). Enclosure 2 provides the redacted version of the closed meeting presentation slides.

Enclosure 3 contains an appropriate affidavit supporting proprietary treatment of SHINE confidential proprietary information pursuant to 10 CFR 2.390.

There are no new regulatory commitments in this letter.

4G01
NRR

October 23, 2012
SMT-2012-032
Project No. 0792
Page 2

If you have any questions regarding this letter, please contact Mr. Vann Bynum, Chief Operating Officer, at 608.210.1062.

Sincerely,

A handwritten signature in dark ink, appearing to read 'Greg Piefer', with a stylized, flowing script.

Gregory Piefer, PhD
Chief Executive Officer
SHINE Medical Technologies, Inc.
Enclosures: As stated

October 23, 2012
SMT-2012-032
Project No. 0792
Page 3

cc: (without Enclosures)

Mr. Charles A. Castro
Regional Administrator
U.S. Nuclear Regulatory Commission
Region III
2443 Warrenville Road Suite 210
Lisle, IL 60532-4352

Mr. Steven Lynch
General Engineer
Mail Stop 12D20
U.S. Nuclear Regulatory Commission
Washington, DC 20555

Ms. Cheryl Rogers
Supervisor, Radioactive Materials Programs
Wisconsin Division of Public Health
P.O. Box 2659
Madison, WI 53701-2659

Ms. Brenda Furlow
General Counsel
SHINE Medical Technologies
2555 Industrial Drive
Monona, WI 53713

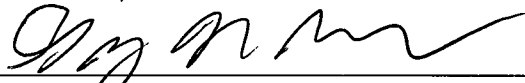
October 23, 2012
SMT-2012-032
Project No. 0792

Enclosure 3
Affidavit of Dr. Gregory Piefer

information that is subject to export controls. SHINE limits access to these elements to those with a "need to know" subject to maintaining confidentiality.

Public disclosure of these elements is likely to harm SHINE because it would allow others to understand SHINE's competitive expectations, assumptions, processes and current position.

- d. The proprietary information sought to be withheld from public disclosure at the non-public portion of the referenced meeting includes; the target solution vessel processes and supporting systems, radioisotope production facility processes and systems, and the application schedule.
- e. The information is transmitted to the NRC in confidence and under the provisions of 10 CFR 2.390; it is to be received in confidence by the NRC.



Gregory Piefer, PhD
CEO – SHINE Medical Technologies, Inc.

Date: 10-22-12

Subscribed and sworn to before me, a Notary Public, in and for the county and state above named, this 22 day of October, 2012.



Notary Public in and for the
State of Wisconsin
Commission expires 8/31/2013

October 23, 2012
SMT-2012-032
Project No. 0792

Enclosure 2
Closed Meeting Slides (Redacted)

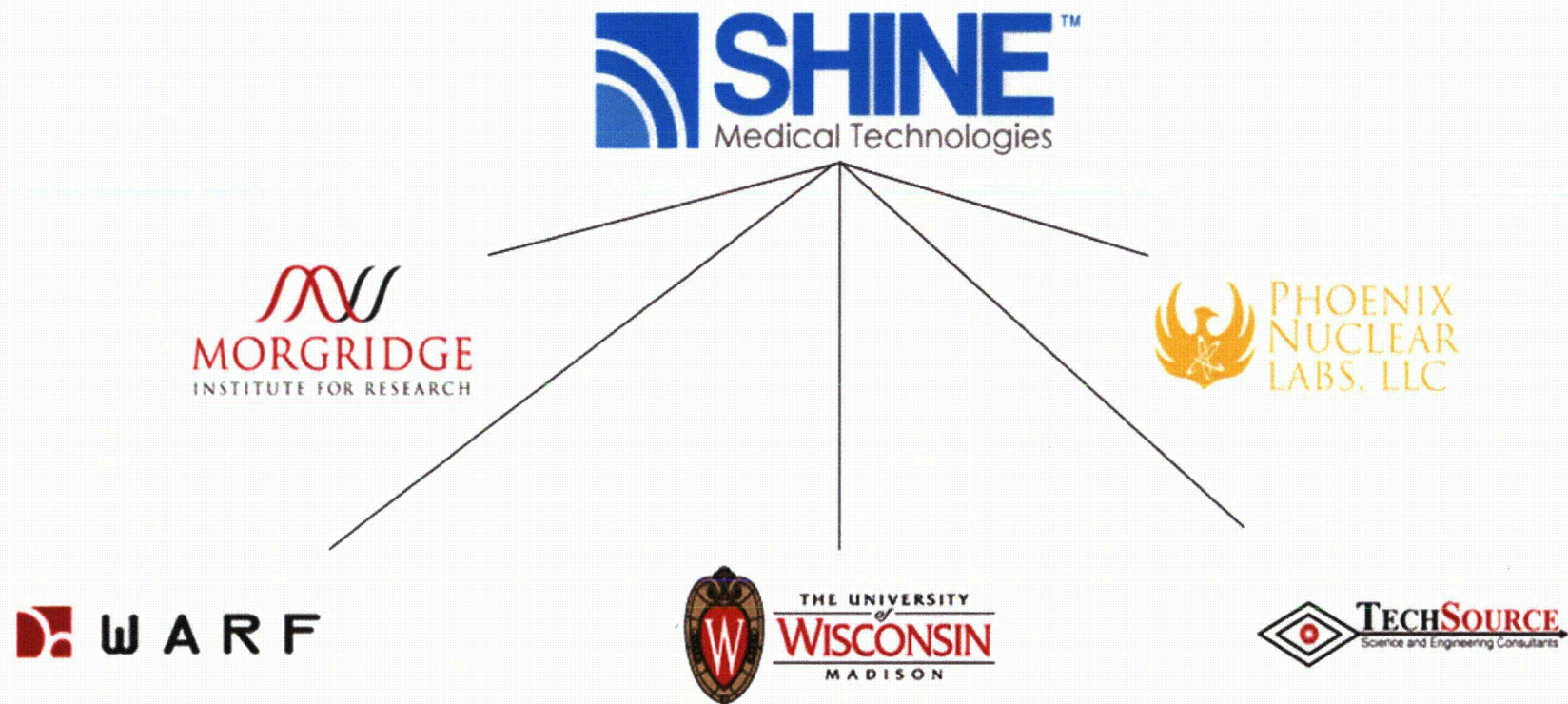


Who is SHINE Medical Technologies?

November 8, 2012



An impressive suite of organizations created SHINE



We have sought out the best



Argonne, Los Alamos, and Savannah
River National Laboratories

THIS PAGE IS LEFT INTENTIONNALLY BLANK



Irradiation Facility Design and Operational Overview

NRC/SHINE Pre-Application Meeting
Rockville, MD
November 8, 2012



Health. Illuminated.™

Questions?

Eric N. Van Abel
Nuclear Systems Engineer
SHINE Medical Technologies, Inc.
877-512-6554
eric.vanabel@shinemed.com



THIS PAGE IS LEFT INTENTIONNALLY BLANK

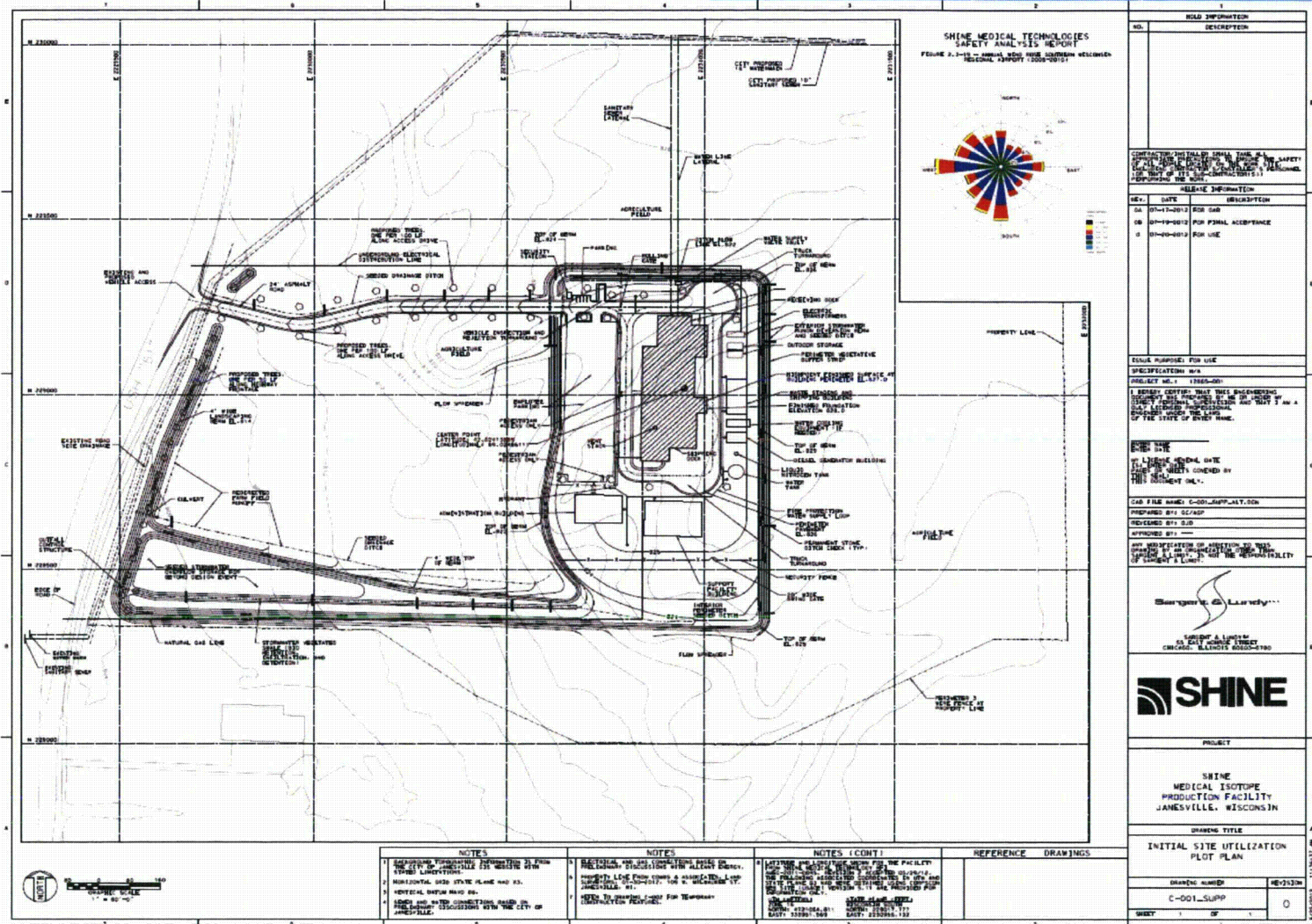


Mo-99 Production Facility Design and Processing Overview

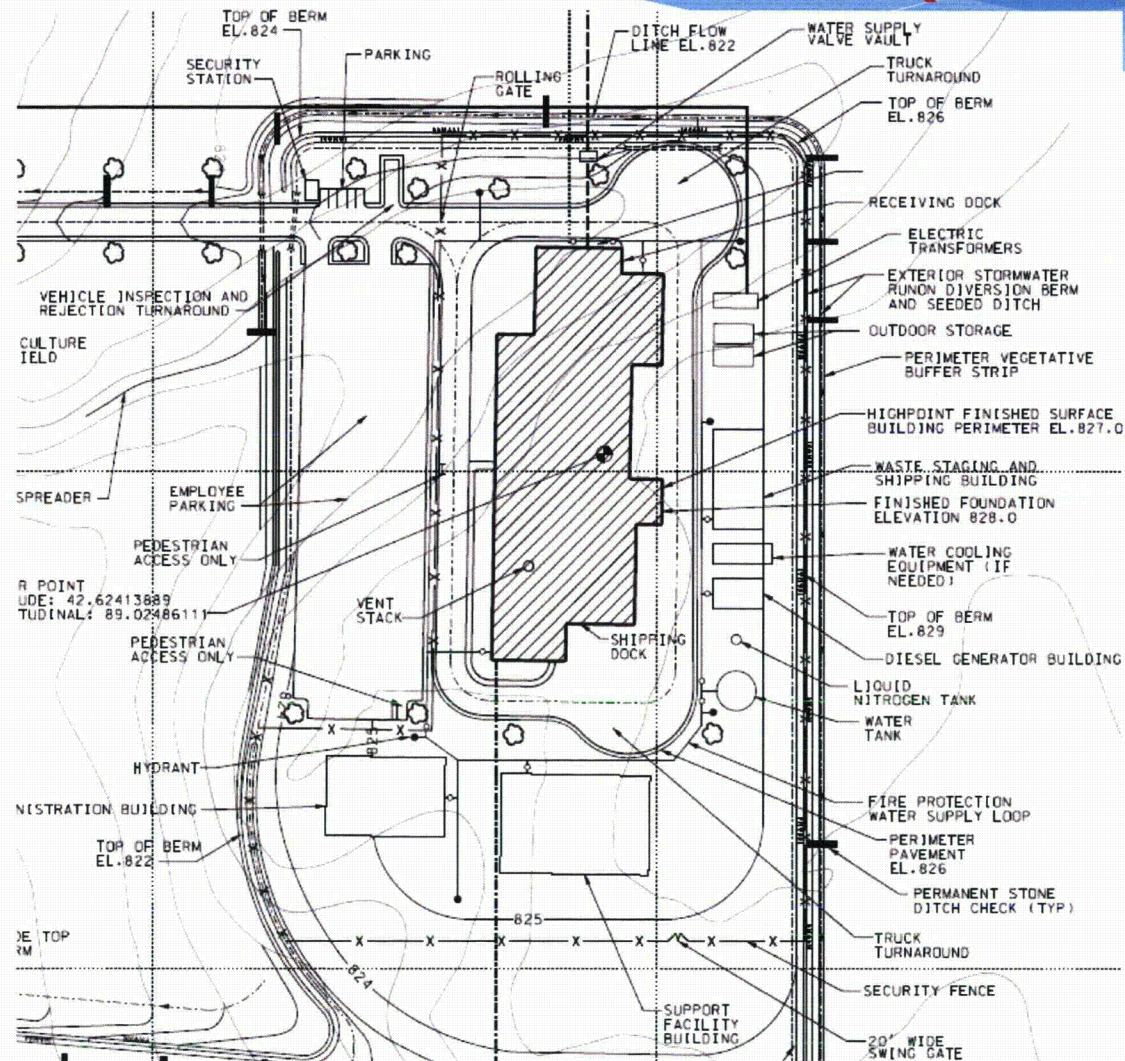
NRC/SHINE Pre-Application Meeting
Rockville, MD
November 8, 2012



Site Utilization Plot Plan



Site Utilization Plot Plan (zoom)



Questions?

Mike Washer, P.E.
Principal Process Engineer
SHINE Medical Technologies, Inc.
877-512-6554
michael.washer@merrick.com