

PMComanchePeakPEm Resource

From: ComanchePeakCOL Resource
Sent: Thursday, November 08, 2012 8:13 AM
To: PMComanchePeakPEm Resource
Subject: FW: 2012-10-30 Woodlan GWL 3D modeling working files
Attachments: 3DFileContent.pdf

From: Monarque, Stephen
Sent: Thursday, November 08, 2012 8:02 AM
To: ComanchePeakCOL Resource
Subject: FW: 2012-10-30 Woodlan GWL 3D modeling working files

From: Woodlan, Don [<mailto:Donald.Woodlan@luminant.com>]
Sent: Tuesday, October 30, 2012 4:22 PM
To: Monarque, Stephen
Cc: Roy, Tarun; Evans, Todd; Conly, John; Bird, Bobby; nicholas.kellenberger@mnes-us.com; russell.bywater@mnes-us.com
Subject: 2012-10-30 Woodlan GWL 3D modeling working files

At the GWL public meeting, Luminant told the NRC that we would provide the 3D modeling working files so that the NRC reviewers could better visualize the site. The files are attached.

Donald R. Woodlan

Manager, Nuclear Regulatory Affairs

Luminant Power

O- 254-897-6887 C- 214-542-7761

Confidentiality Notice: This email message, including any attachments, contains or may contain confidential information intended only for the addressee. If you are not an intended recipient of this message, be advised that any reading, dissemination, forwarding, printing, copying or other use of this message or its attachments is strictly prohibited. If you have received this message in error, please notify the sender immediately by reply message and delete this email message and any attachments from your system.

Hearing Identifier: ComanchePeak_COL_Public
Email Number: 1764

Mail Envelope Properties (0AA17736E4C4154CA37233EEBFC8DEB20127D54C53FD)

Subject: FW: 2012-10-30 Woodlan GWL 3D modeling working files
Sent Date: 11/8/2012 8:12:31 AM
Received Date: 11/8/2012 8:12:35 AM
From: ComanchePeakCOL Resource

Created By: ComanchePeakCOL.Resource@nrc.gov

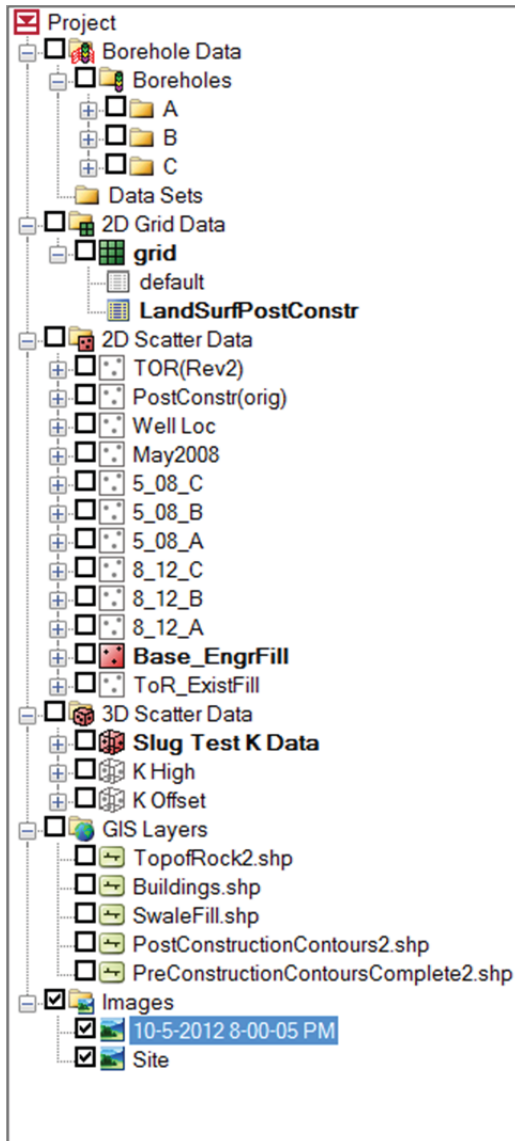
Recipients:
"PMComanchePeakPEm Resource" <PMComanchePeakPEm.Resource@nrc.gov>
Tracking Status: None

Post Office: HQCLSTR02.nrc.gov

Files	Size	Date & Time
MESSAGE	1326	11/8/2012 8:12:35 AM
3DFileContent.pdf	1613566	

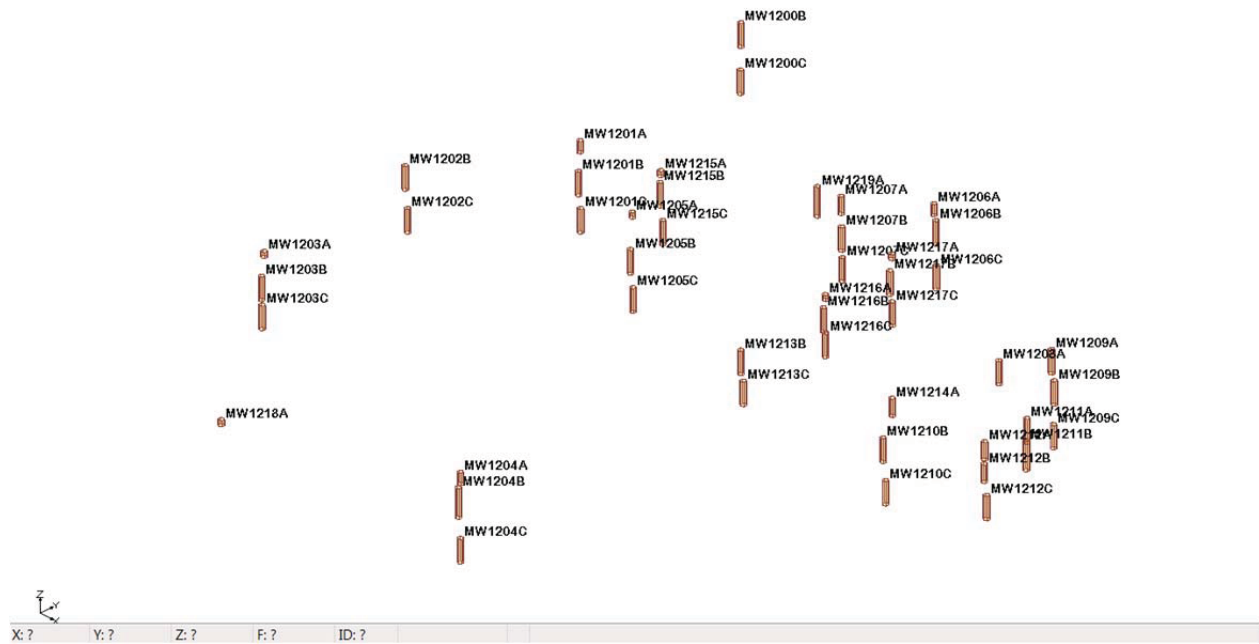
Options
Priority: Standard
Return Notification: No
Reply Requested: No
Sensitivity: Normal
Expiration Date:
Recipients Received:

Screen shot of GMS Project Explorer window illustrating contents of GMS files:



Borehole Data – organized by well completion (screen position):

- A series (completed in regolith, undifferentiated fill, existing fill)
- B series (completed in shallow bedrock of the Glen Rose)
- C series (completed in deep bedrock of the Glen Rose)

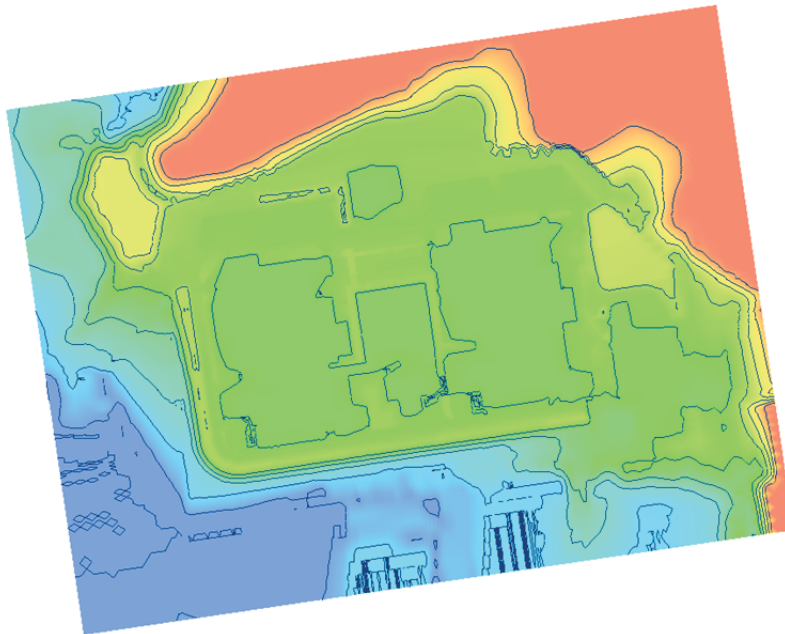


2D Grid data:

- Post-construction land surface interpolated from 2D Scatter data set (preliminary version, subject to revision)

LandSurfPostConstr

870.0
860.0
850.0
840.0
830.0
820.0
810.0
800.0
790.0
780.0
770.0



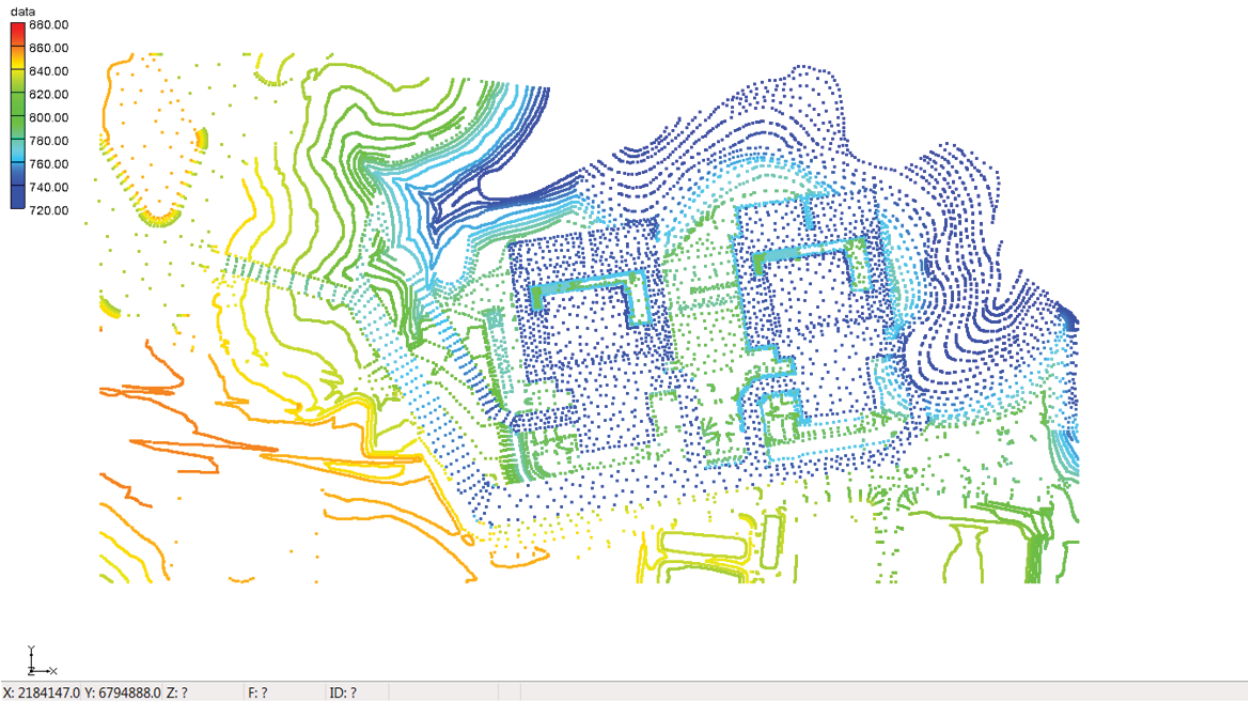
X: 2184777.0 Y: 6794921.0 Z: ?

F: ?

ID: ?

2D Scatter data sets:

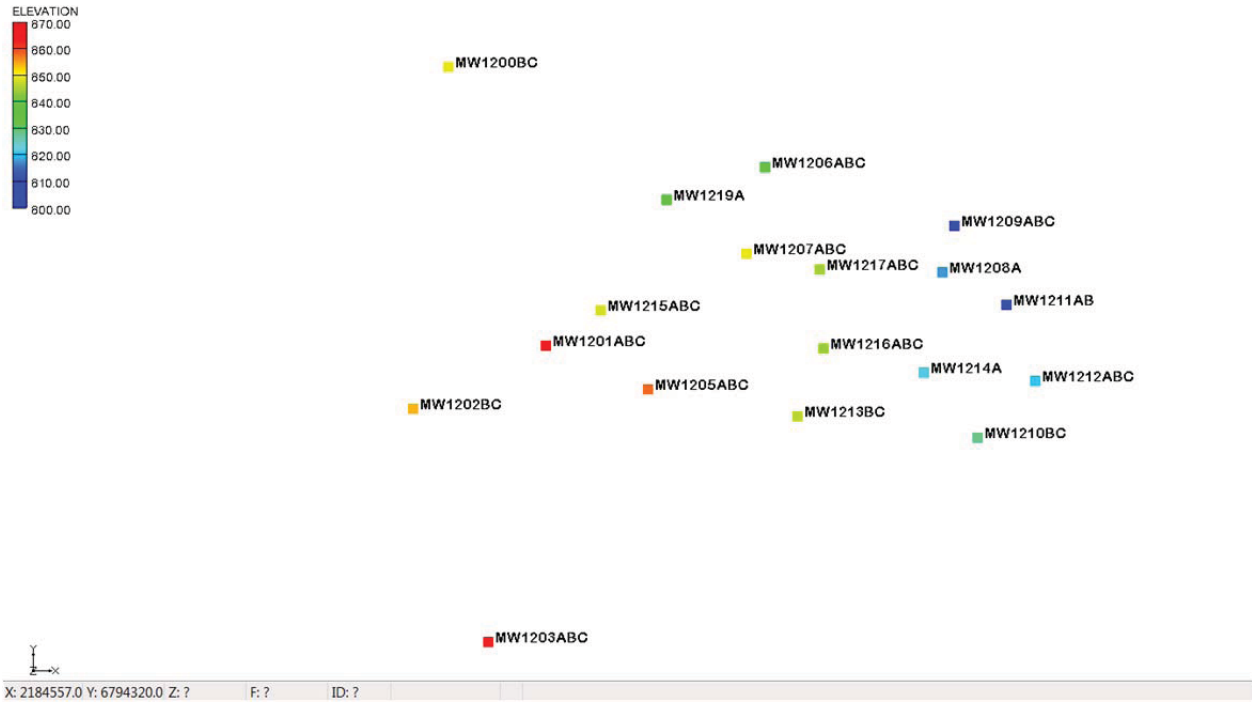
- TOR(Rev2) – top of rock surface (preliminary version, subject to revision)



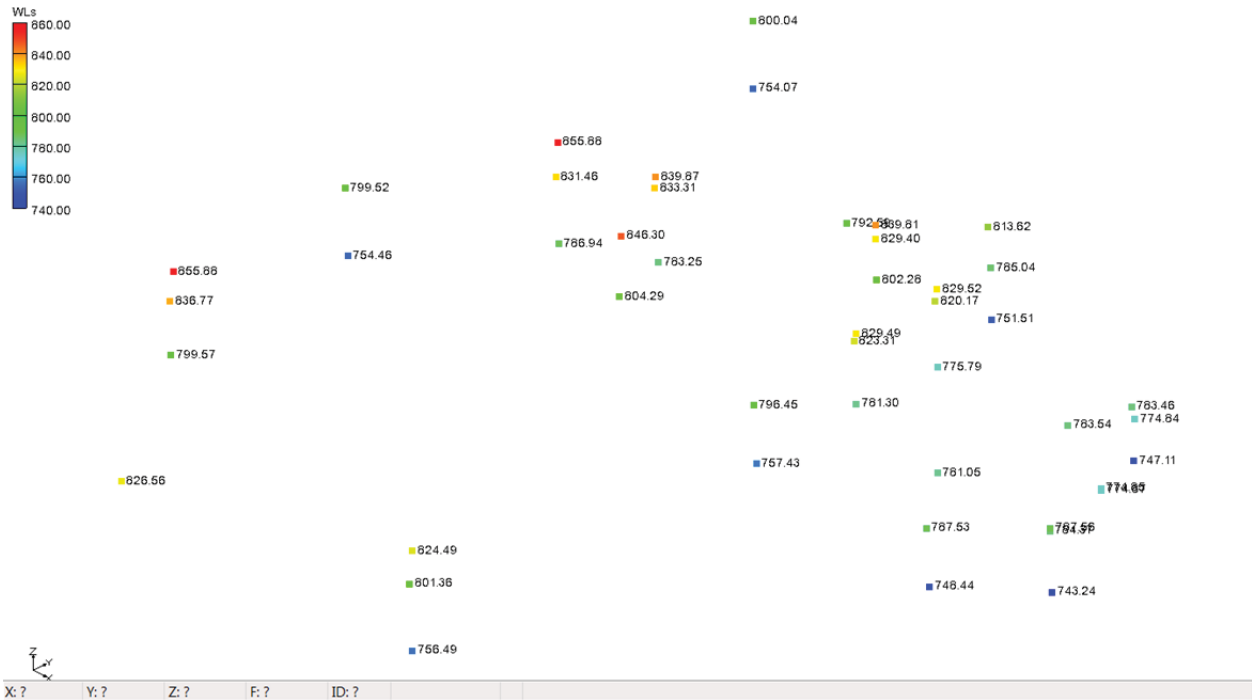
- PostConstr(orig) – post-construction land surface elevations (preliminary version, subject to revision)



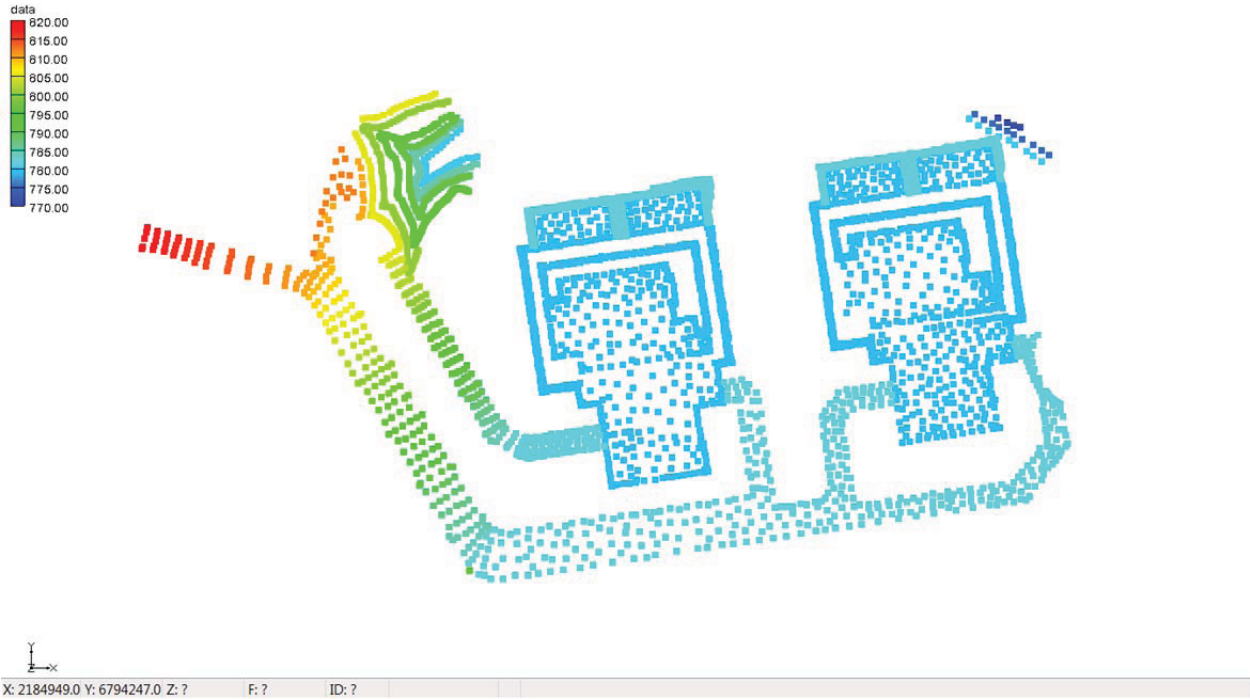
- Well Loc – well locations (x,y,z – z is bolt elevation on well pad); letters indicate well completions (A, B, C) at each well cluster



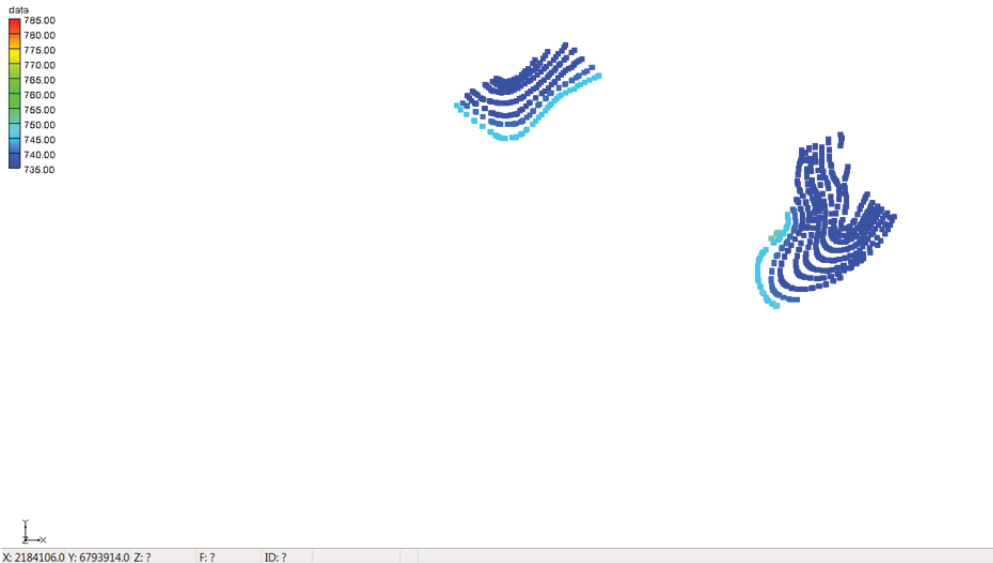
- May2008 – water levels measured in May 2008 (ft MSL)



- 5_08_C – water levels in ‘C’ wells in May 2008 (images not shown for these data)
- 5_08_B – water levels in ‘B’ wells in May 2008 (images not shown for these data)
- 5_08_A – water levels in ‘A’ wells in May 2008 (images not shown for these data)
- 8_12_C – water levels in ‘C’ wells in August 2012 (images not shown for these data)
- 8_12_B – water levels in ‘B’ wells in August 2012 (images not shown for these data)
- 8_12_A – water levels in ‘A’ wells in August 2012 (images not shown for these data)
- Base_EngrFill – top of rock in areas of Engineered Fill (preliminary, subject to revision)



- ToR_ExistFill – top of rock beneath areas of existing fill (preliminary, subject to revision)



3D Scatter Data:

- Slug Test K Data – K values determined from slug tests; values reported relative to 1×10^{-6} cm/s
- K High - largest value tabulated, lower duplicate K values are eliminated; values reported relative to 1×10^{-6} cm/s
- K Offset – all K measurements, with packer values offset from center of well screen (duplicate values); values relative to 1×10^{-6} cm/sec

GIS Layers: imported shape files (all data preliminary)

- TopofRock2.shp
- Buildings.shp
- SwaleFill.shp
- PostConstructionContours2.shp
- PreConstructionContoursComplete2.shp

Images (from Google Earth) – March 31, 2008 image