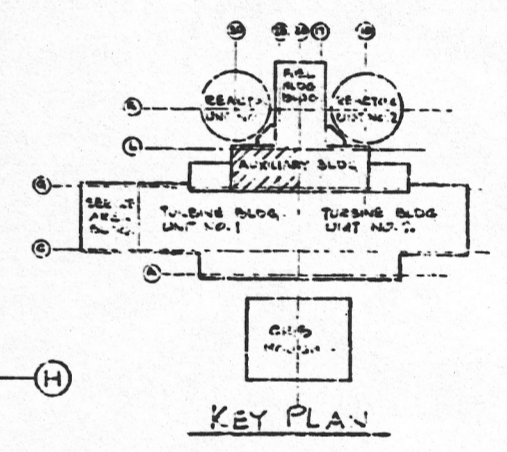


FOR CONTINUATION
SEE DWG. B-724

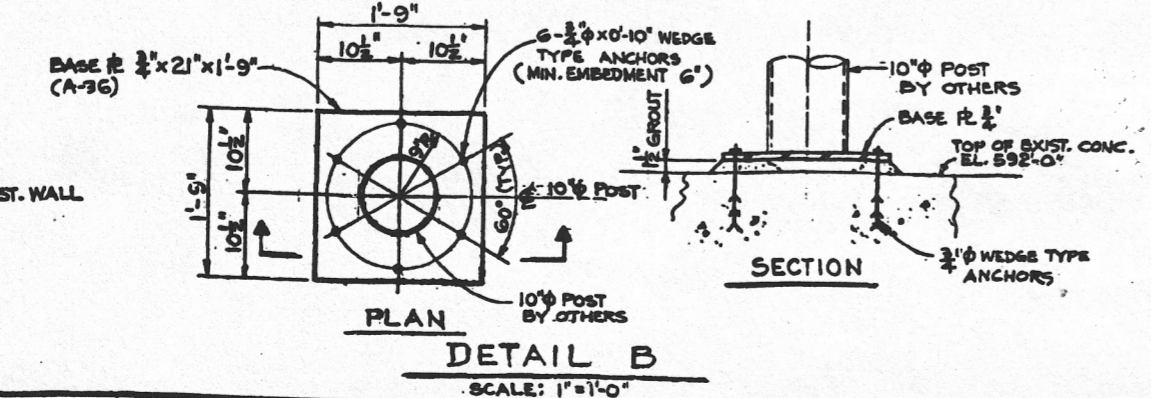
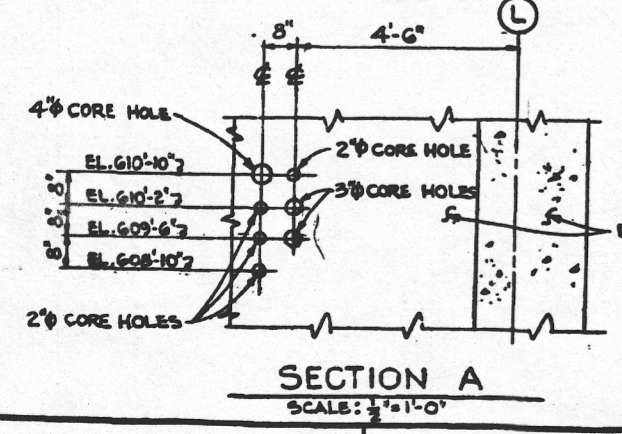
FOR CONTINUATION
SEE DWG. B-725



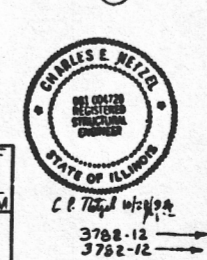
- NOTES**
1. FOR GENERAL NOTES SEE DRAWING B-641
 2. ENLARGE EXISTING PENETRATION FROM 8" TO 12" PER SPECIFICATION X-3646
 3. CONDUITS AND/OR PIPES SHALL BE GROUPED IN PLACE USING MASTERFLOW TIES OR APPROVED EQUAL.
 4. DRILL CORE HOLE PER SPECIFICATION X-3646

REFERENCE DRAWINGS

AUXILIARY BUILDING WALL PLAN ABOVE EL. 592'-0" SOUTH EAST AREA

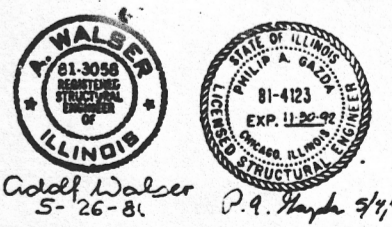


REV.	DATE	DESCRIPTION	DRAWN	CHECKED	ENGR. APPROVAL
PP	1/18/94	FOR RECORD PER 1701 000000074, 1701 992-0-31-54, FCN 27-305-14, FCN 2-94-109, (DEAS REV.)	V.M. RIVERA	V.C. CRISO	C.E. PROKUSKI



SAFETY RELATED

NO.	DATE	DESCRIPTION	STATUS
1	1/18/94	FOR RECORD PER 1701 000000074, 1701 992-0-31-54, FCN 27-305-14, FCN 2-94-109, (DEAS REV.)	FOR RECORD



AUXILIARY BUILDING WALL PLAN EL. 592'-0" S.E. AREA. ZION STATION UNIT I COMMONWEALTH EDISON CO. CHICAGO, ILLINOIS

SARGENT & Lundy
ENGINEERS
CHICAGO, ILLINOIS

D51