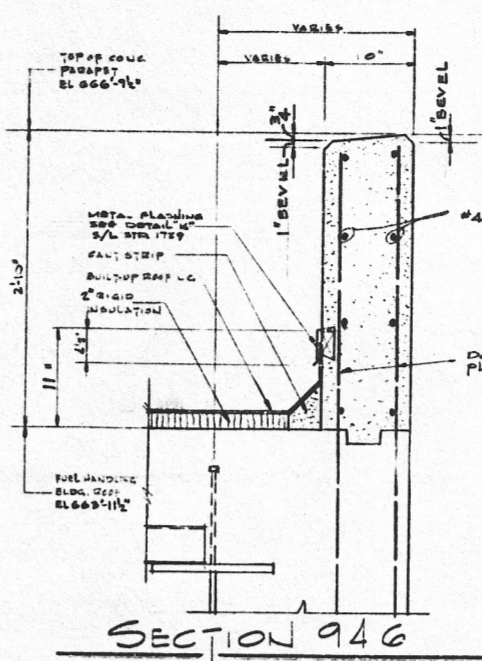
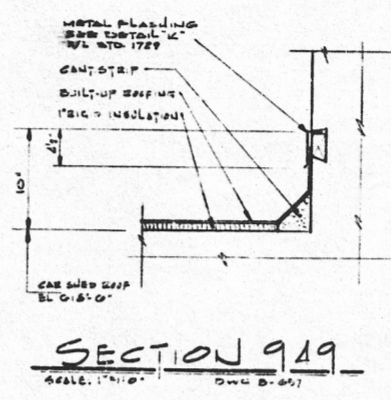


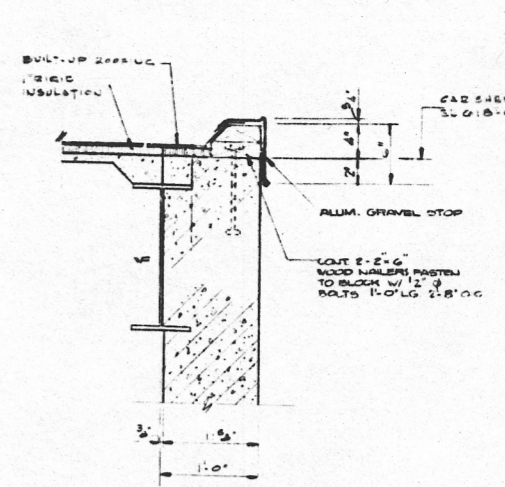
FUEL HANDLING BLDG. ROOF PLAN - EL. 663'-11 1/2"
SCALE: 3/8" = 1'-0"



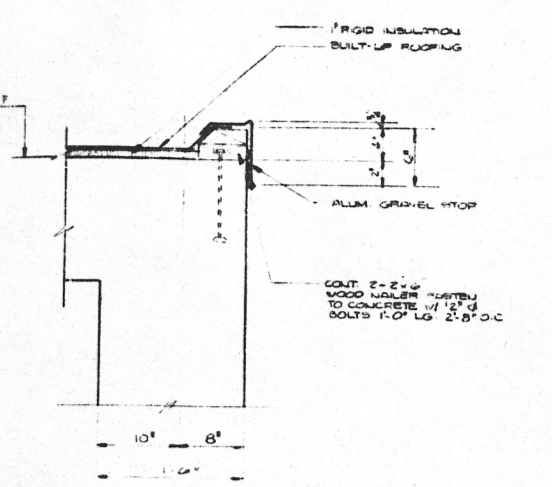
SECTION 946
SCALE: 1/4" = 1'-0"



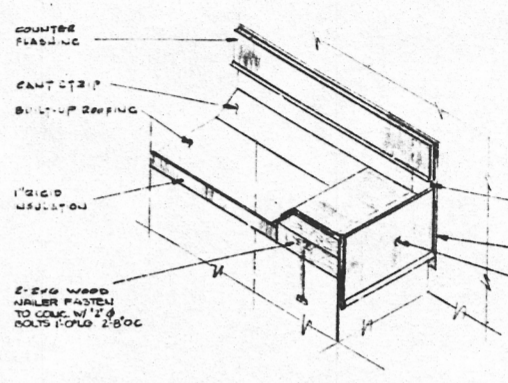
SECTION 949
SCALE: 1/4" = 1'-0"



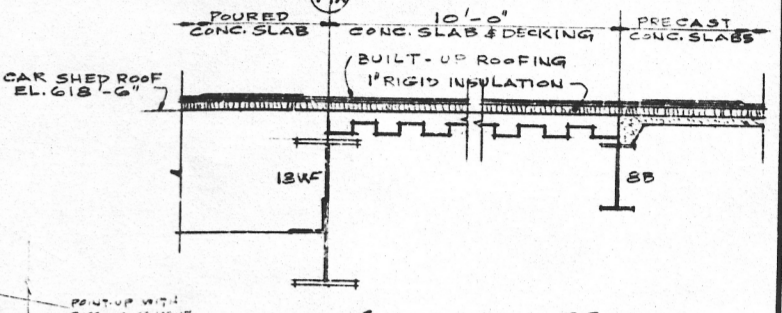
SECTION 947
SCALE: 1/4" = 1'-0"



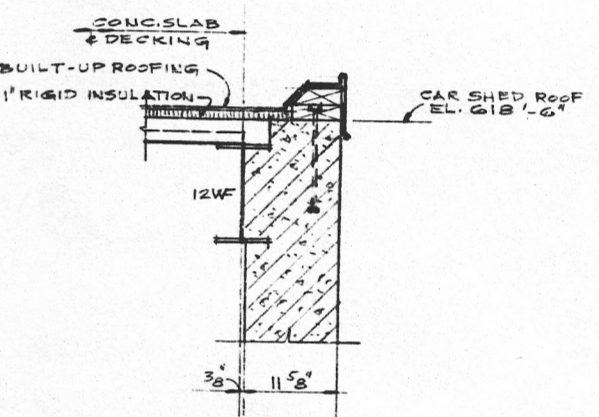
SECTION 948
SCALE: 1/4" = 1'-0"



DETAIL 950
SCALE: 1/4" = 1'-0"



SECTION 951
SCALE: 1/4" = 1'-0"



SECTION 952
SCALE: 1/4" = 1'-0"

NOTES

1. FOR ARCHITECTURAL GENERAL NOTES SEE DRAWING B-661.

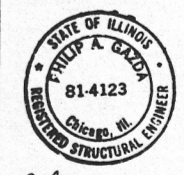
2. ALL WOOD SHALL BE DRY-KILNED, BURNED, AND FINISHED AS SPECIFIED BY THE STRUCTURAL CONTRACTOR. REFER TO THE SPECIFICATIONS WITH REGARD TO THE WOODS SPECIFIED IN THE ARCHITECTURAL GENERAL NOTES B-661.

REFERENCE DRAWINGS

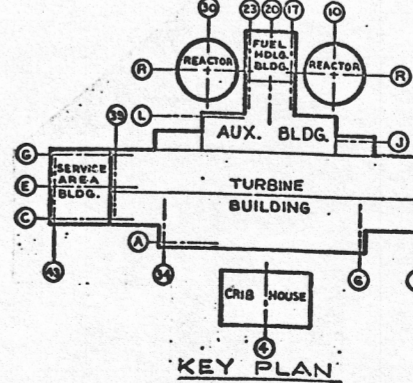
B-660 FUEL HANDLING BUILDING ROOF FRAMING PLAN - WEST AREA UNITS 1 & 2

B-661 FUEL HANDLING BUILDING ROOF FRAMING PLAN - EAST AREA UNITS 1 & 2

B-662 FUEL HANDLING BUILDING FLOOR PLAN - ROOF & FLOOR PLAN IN WEST



D. R. RAY 6-27-88



KEY PLAN

Rev.	Date	By	Description
1	5-10-88	J.M.	ISSUED FOR PERMITS
2	6-22-88	J.M.	REVISED FOR CONSTRUCTION
3	7-15-88	J.M.	REVISED FOR CONSTRUCTION
4	8-10-88	J.M.	REVISED FOR CONSTRUCTION
5	9-15-88	J.M.	REVISED FOR CONSTRUCTION

FUEL HANDLING BLDG. ROOF PLAN
ZION STATION UNIT 1 & 2
COMMONWEALTH EDISON CO.
CHICAGO, ILLINOIS

SCALE: AS SHOWN
DRAWN: H. SWANSON
CHECKED: H. SWANSON
ENGINEER: H. SWANSON



DRAWING NO. **B-660**

DRAWING RELEASE RECORD				
REV.	DATE RELEASED	PURPOSE	PREPARED	REVIEWED
D	6-24-88	FOR RECORD PER ECH 2-889-02 ADD NO. 7920-71	R. Canty	D. R. RAY

