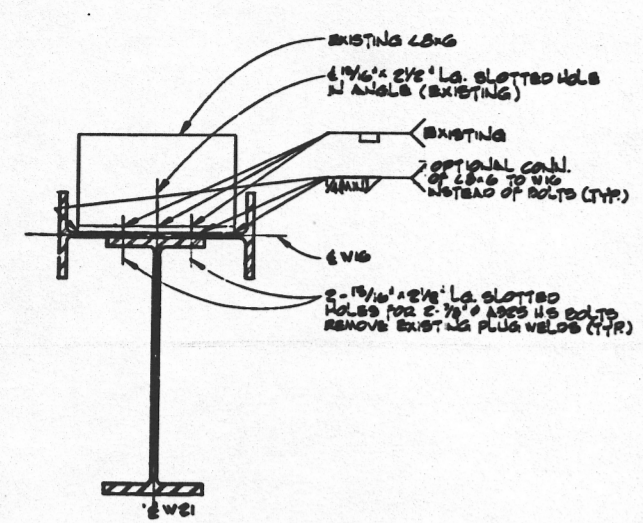
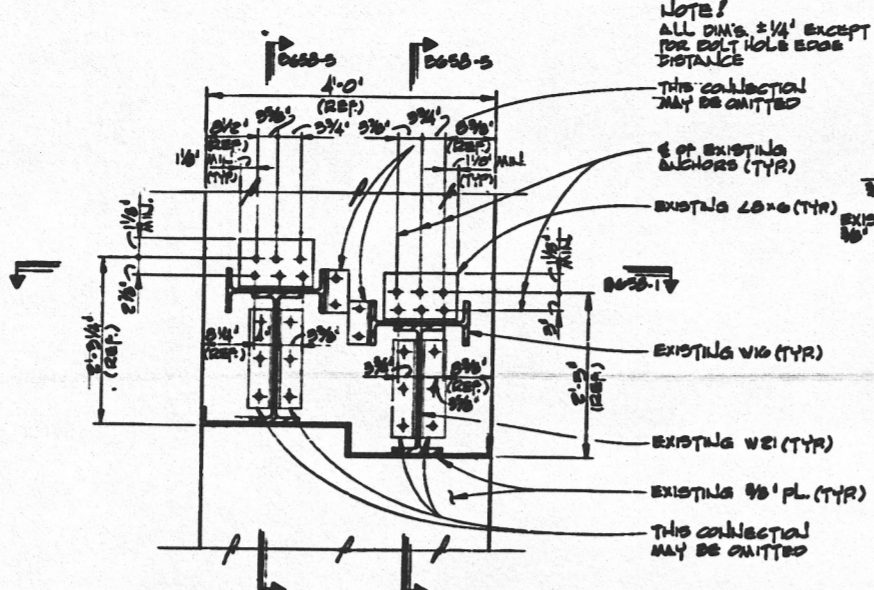


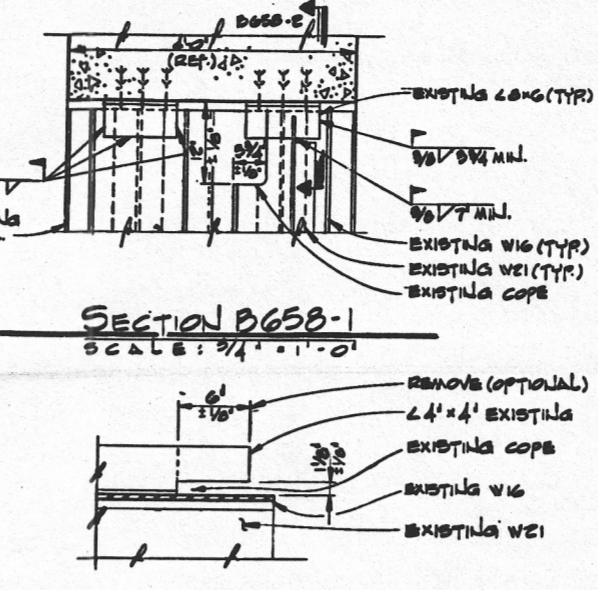
B-658 8 7 6 5 4 3 2 1



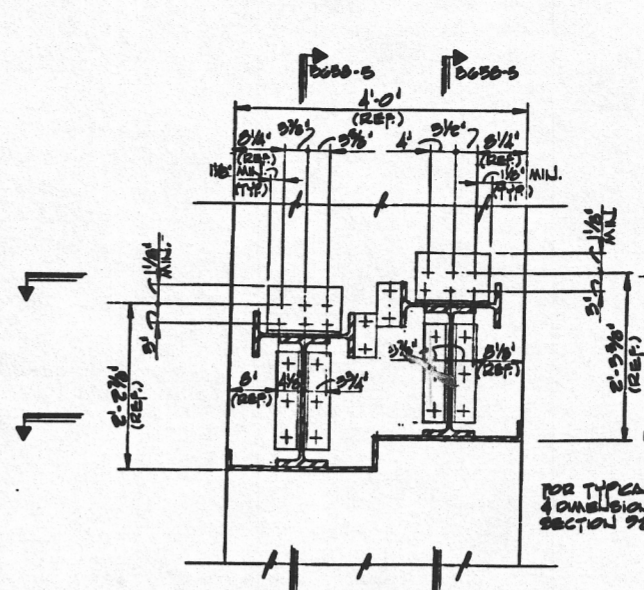
SECTION 921 ALTERNATE 1  
SCALE: 1/4" = 1'-0" (UNIT 1)



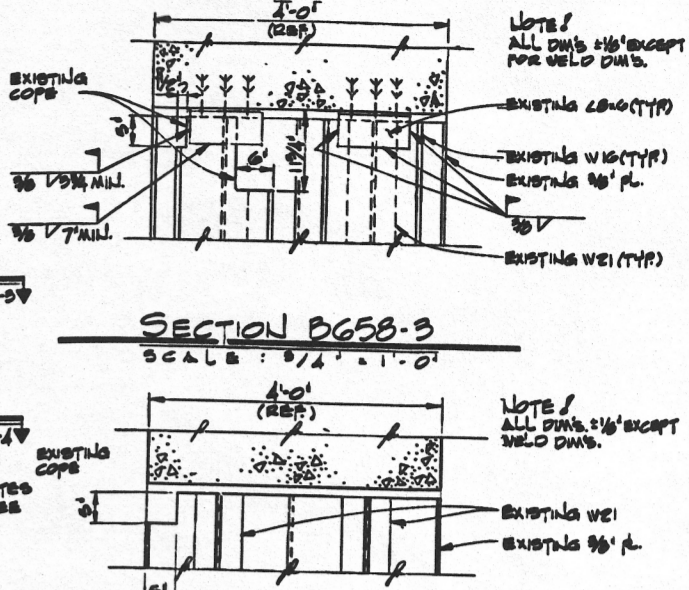
SECTION 921-A (EAST END)  
SCALE: 1/4" = 1'-0" (UNIT 1)



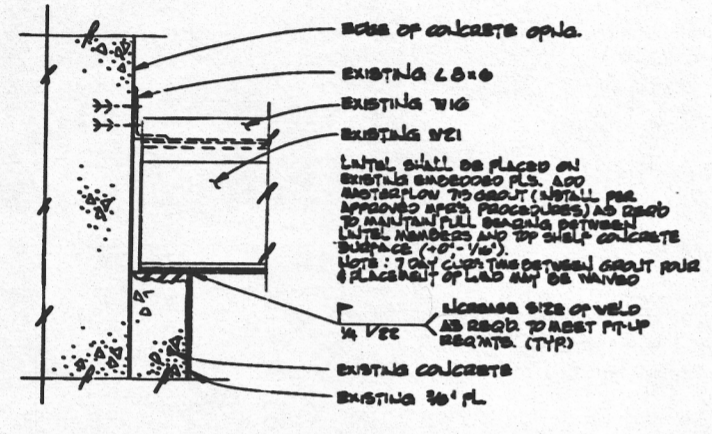
SECTION B658-1  
SCALE: 1/4" = 1'-0"



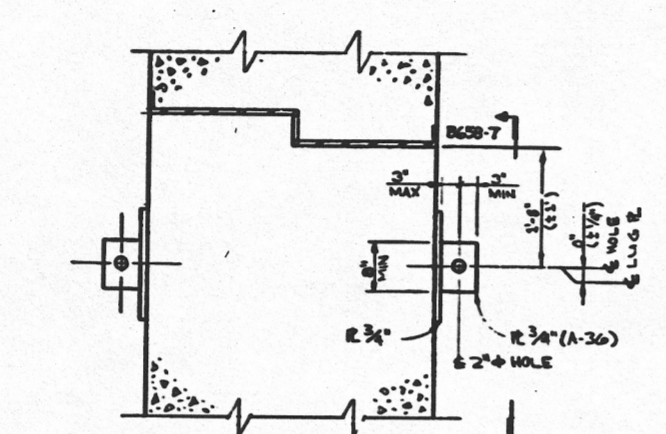
SECTION 921-B (WEST END)  
SCALE: 1/4" = 1'-0" (UNIT 1)



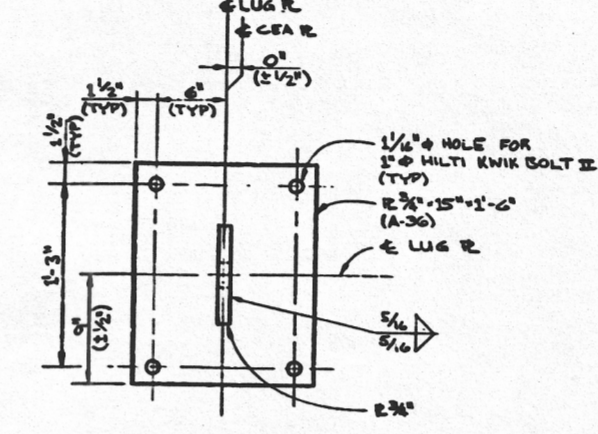
SECTION B658-3  
SCALE: 1/4" = 1'-0"



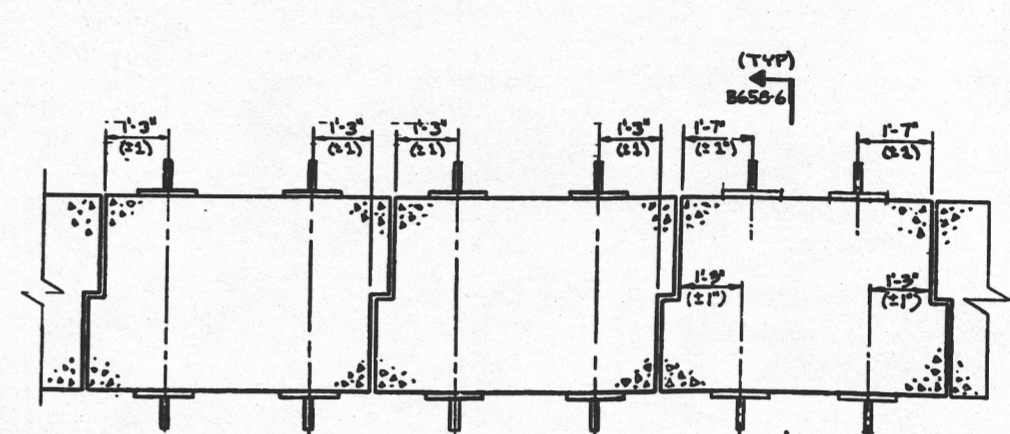
SECTION B658-5  
SCALE: 1/4" = 1'-0"



SECTION B658-6  
SCALE: 1/4" = 1'-0" (UNIT 1)

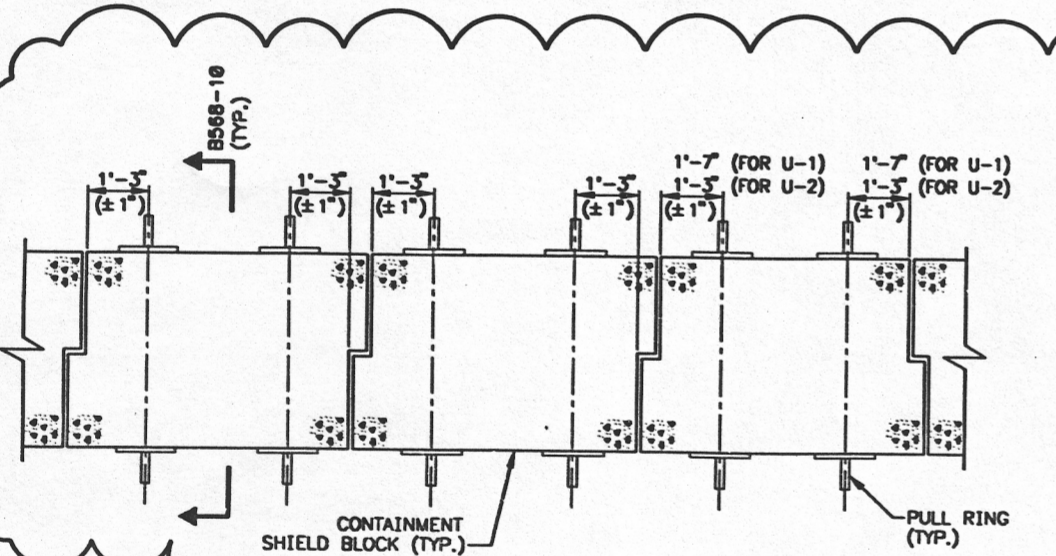


SECTION B658-7  
SCALE: 1/4" = 1'-0"

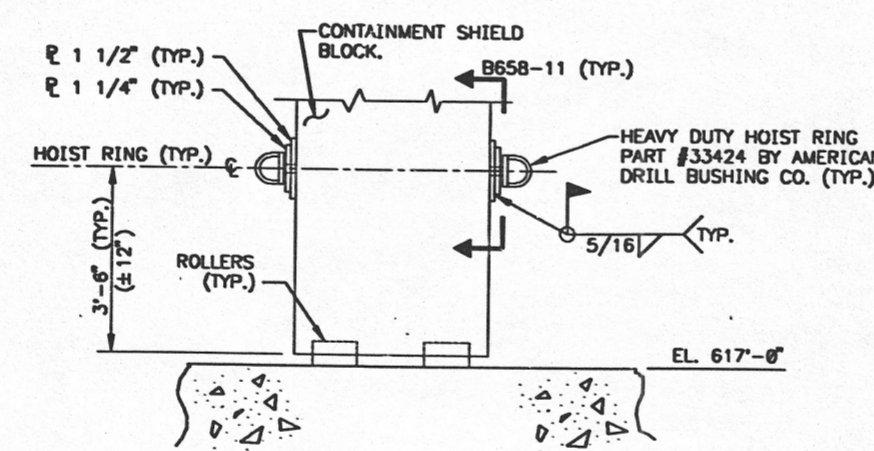


DETAIL B658-8  
SCALE: 1/4" = 1'-0"

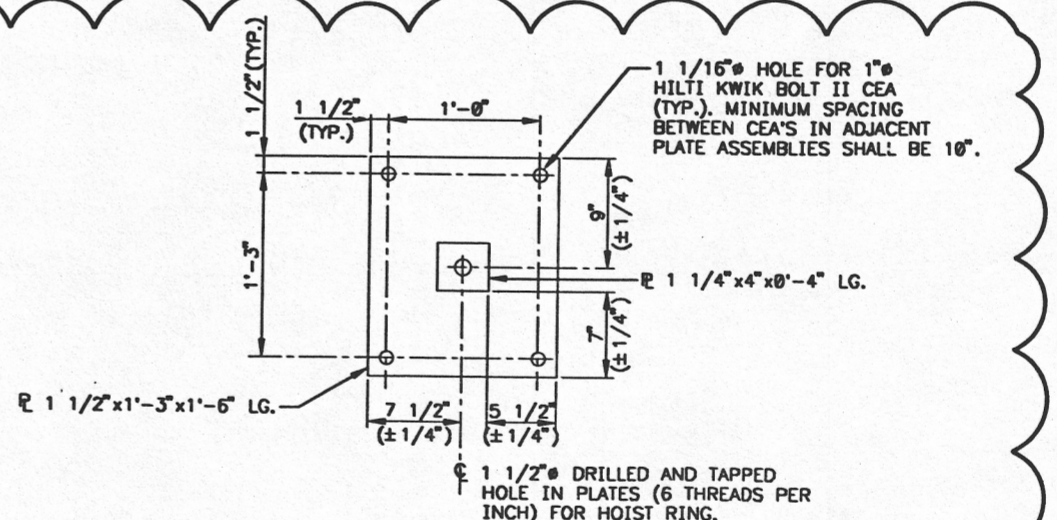
NOTE:  
THE MINIMUM SPACING BETWEEN  
CEA'S IN ADJACENT LIFTING  
LUG ASSEMBLIES SHALL BE 10\"/>



DETAIL B658-9  
SCALE: NONE



SECTION B658-10  
SCALE: NONE



SECTION B658-11  
SCALE: NONE

T/O# 000000029  
T/O# 000000208

**NOTES**

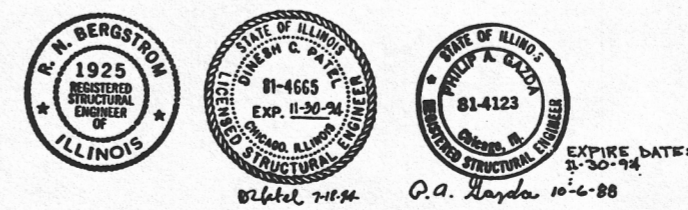
1. WELDING PROCEDURE SPECIFICATIONS SHALL CONFORM TO THE REQUIREMENTS OF AWS D11. WELDERS QUALIFIED TO THE REQUIREMENTS OF AWS D11. WELDING SHALL BE PERFORMED IN ACCORDANCE WITH THE WELDING PROCEDURE SPECIFICATIONS (WPS) FOR WELDING OF STEEL TO STEEL. VISUAL INSPECTION SHALL BE PERFORMED IN ACCORDANCE WITH THE WPS. WPS'S SHALL BE APPROVED BY THE PURCHASER.
2. THE WELDING PROCESS USED SHALL BE MANUAL SHIELDED METAL ARC WELDING (MMAW). ELECTRODES FOR MMAW WELDING SHALL BE TYPE E7018.
3. ALL STRUCTURAL PLATES & SHAPES SHALL BE A572 GR 50 UNLESS NOTED.
4. DIMENSIONS DESIGNATED "REF." ARE FOR INFORMATION ONLY AND SHALL BE VERIFIED BY THE CONTRACTOR. ALL OTHER DIMENSIONS SHALL BE VERIFIED IN ACCORDANCE WITH THE CONTRACT APPROVED PROGRAM FOR THE SAFETY CLASS OF THE CONSTRUCTION.

**REFERENCE DRAWINGS**

B-617 AUX. BLDG. MEZZANINE FLR. PLAN EL. 617'-0"  
B-657 FUEL HANDLING BLDG. OPERATING R.R. PLAN EL. 617'-0"

THIS DRAWING INCLUDES  
NUCLEAR SAFETY RELATED  
EQUIPMENT AND/OR COMPONENT

ZION STATION - UNIT 1 & 2  
FUEL HANDLING BLDG.  
REMOVABLE WALL MODIFICATION



REV.	SPEC. NO.	DATE	DRAWN	CHECKED	ENGR. APPROVAL	DESCRIPTION	FILE
G		6-2-93	Mike Lora	Ed Burt	V.A. Hoyle	RECORD DWG. PER DCE# 93-070, ECU# 22-006995-01	
H		1-10-94	Paul Johnson	FR. Klein		SEPC EC-73-00015	
						RELAY DWG. PER DCE # 94-146, ECU# 22-007475, REC # 2-95-146, PER # E22-1-95-247.	

REV.	DATE	BY	CHKD.	APPV.	SCALE	DATE	FILE NAME
J	11/05/96				AS NOTED	11/05/96	

ComEd  
Chicago, Illinois  
Zion Station 22

CENTRAL DRAWING FACILITY 30X

D47