

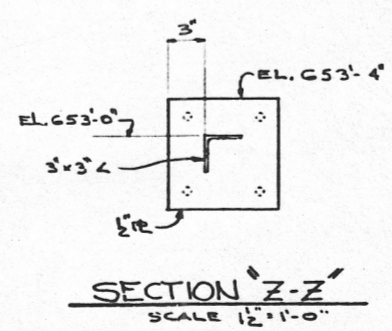
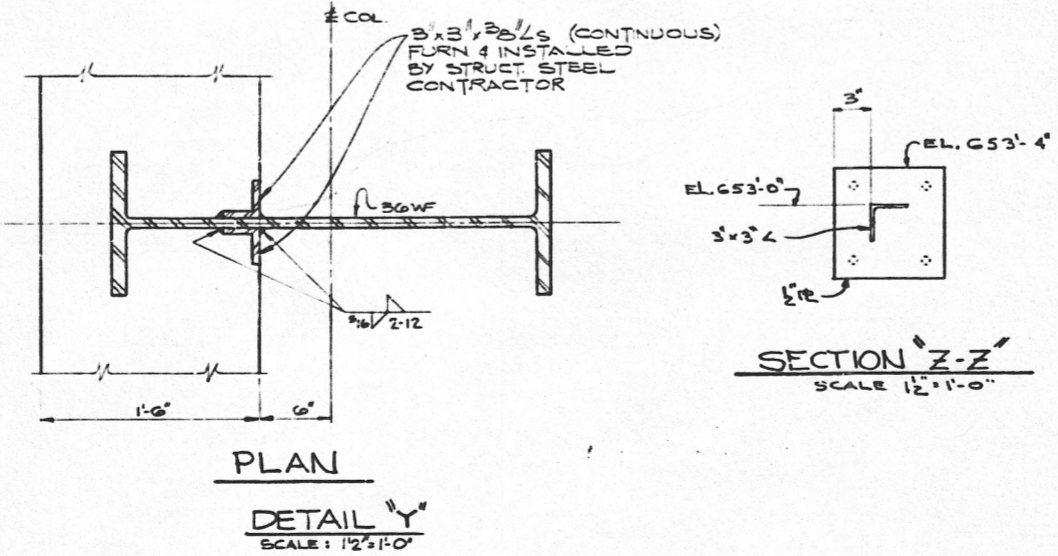
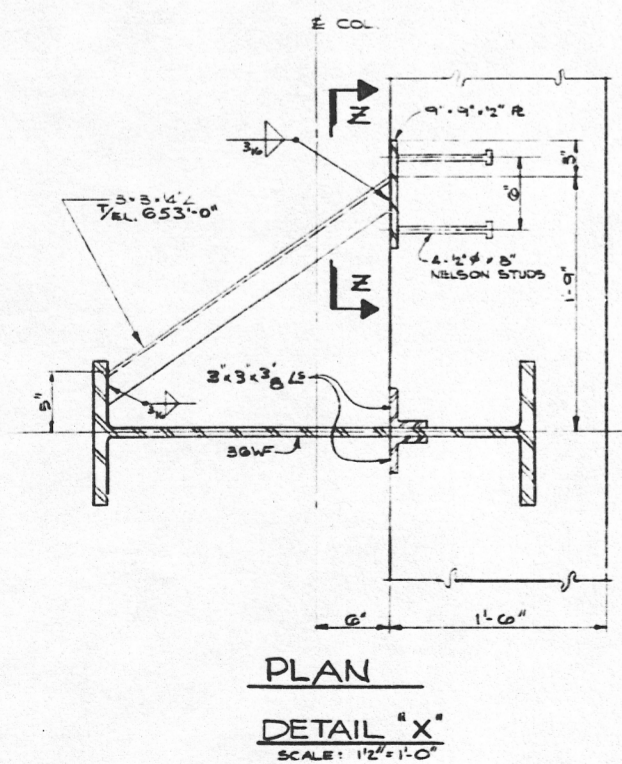
**NOTES**

- FOR GENERAL NOTES SEE DWG. B-423
- ALL WORK ON THIS DRAWING SHALL BE IN ACCORDANCE WITH JOB SPEC. X-7259 UNLESS OTHERWISE NOTED.

**REFERENCE DRAWINGS**

B-102 FUEL HANDLING BLDG. FOUNDATION PLAN EL. 617'-0"

**FUEL HANDLING BUILDING WALL PLAN ABOVE EL. 617'-0"**



Rev.	Date	By	Description
1	4-20-69	DL	ISSUED FOR CONSTRUCTION
2	4-22-69	DL	REVISION

**FUEL HANDLING BUILDING WALL PLAN ABOVE EL. 617'-0"**  
**EAST AREA ZION STATION UNIT 1 & 2**  
**COMMONWEALTH EDISON CO. CHICAGO, ILLINOIS**

SCALE: 1/4"=1'-0"

DRAWN: FLORESK 4-20-69  
CHECKED: DL 4-22-69  
ENGINEER: J. P. [Signature] 4-1-69

APPROVED: [Signature] 10-6-69

**SARGENT & LUNDY**  
CHICAGO

DRAWING NO. **B-421**

D40