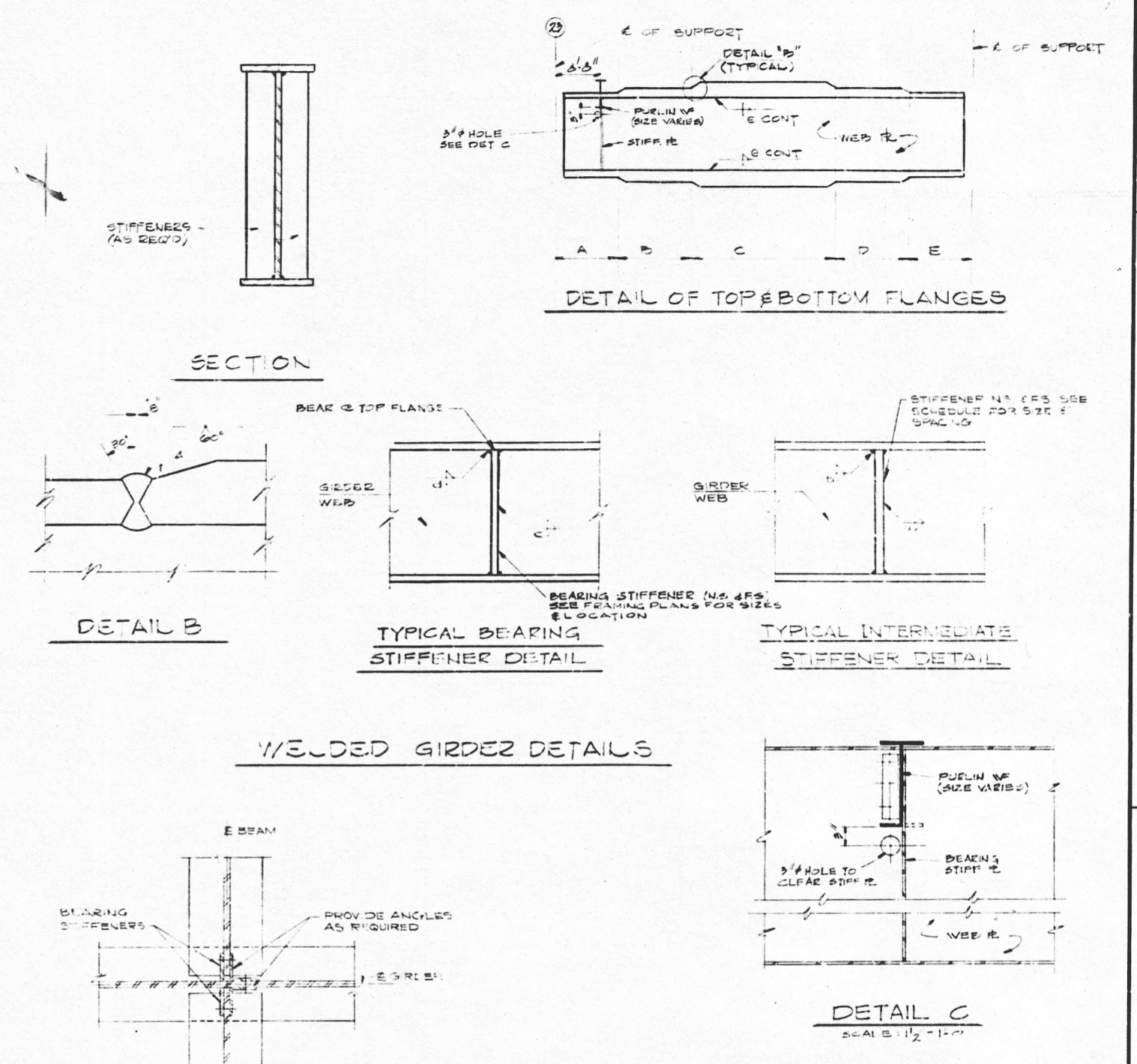


MARK	A.S.T.M. STEEL	DESIGN NUMBER	DRAWING REFERENCE	NO. REV.	WEB PLATE	FLANGES		GIRDER LENGTH C TO C	REACTION (KIPS)				INTERMEDIATE STIFFS (A-B) FROM EAST OR SOUTH END	FILLET WELD BETWEEN FLANGE & WEB	FILLET WELD BETWEEN STIFFENERS & WEB	REMARKS
						TOP	BOTTOM		SOUTH	NORTH	EAST	WEST				
						A	B		C	D	E	F				
FRG-1	A-572	3782-068	B-404	1	72" x 9/16"	A 10 1/2 x 14 1/2 @ 9"	A 10 1/2 x 14 1/2 @ 9"	87'-0"	208.8	108.5	-	-	6" x 3/8" @ 3'-0"	1/4" x 3/8" @ 3'-0"		
FRG-2	A-572	3782-068	B-404	1	72" x 9/16"	A 10 1/2 x 14 1/2 @ 9"	A 10 1/2 x 14 1/2 @ 9"	87'-0"	208.9	102.9	-	-	6" x 3/8" @ 3'-0"	1/4" x 3/8" @ 3'-0"		
FRG-3	A-572	3782-068	B-404	2	72" x 9/16"	A 10 1/2 x 14 1/2 @ 9"	A 10 1/2 x 14 1/2 @ 9"	87'-0"	218.5	115.4	-	-	6" x 3/8" @ 3'-0"	1/4" x 3/8" @ 3'-0"		
FRG-4	A-572	3782-068	B-405	1	72" x 9/16"	A 10 1/2 x 14 1/2 @ 9"	A 10 1/2 x 14 1/2 @ 9"	87'-0"	285.1	255.1	-	-	6" x 3/8" @ 3'-0"	1/4" x 3/8" @ 3'-0"		
ARG-1	A-572	3782-068	B-384	4	78" x 3/8"	16 x 3/8 x 49'-6"	16 x 3/8 x 49'-6"	49'-6"	171.6	171.7			5 x 1/2 @ 4'-1 1/2"	1/4" x 1/2" @ 3'-0"		
ARG-2	A-572	3782-068	B-384	2	88" x 3/8"	18 x 3/8 x 49'-6"	18 x 3/8 x 49'-6"	49'-6"	151.2	155.0			6 x 3/4 @ 5'-0"	1/4" x 3/4" @ 3'-0"		
ARG-3	A-572	3782-068	B-384	2	70" x 3/8"	16 x 3/8 x 49'-6"	16 x 3/8 x 49'-6"	49'-6"	166.6	166.7			5 x 3/4 @ 3'-0"	1/4" x 3/4" @ 3'-0"		
ARG-4	A-572	3782-068	B-384	1	88" x 3/8"	18 x 3/8 x 49'-6"	18 x 3/8 x 49'-6"	49'-6"	153.9	146.7			6 x 3/4 @ 3'-0"	1/4" x 3/4" @ 3'-0"		
ARG-5	A-572	3782-068	B-384	1	44" x 3/8"	14 x 3/8 x 25'-0"	14 x 3/8 x 25'-0"	25'-0"	86.6	89.9			4 x 1/2 @ 5'-0"	1/4" x 1/2" @ 3'-0"	AS SHOWN ON B-384 OPP. HAND ON B-385	
ARG-6	A-572	3782-068	B-384	2	54" x 3/8"	12 x 3/8 x 27'-9"	12 x 3/8 x 27'-9"	27'-9"	100.0	71.1			2 x 1 1/2 @ 5'-0"	1/4" x 1 1/2" @ 3'-0"	AS SHOWN ON B-384 OPP. HAND ON B-385	
AMG-1	A-572	3782-042	B-375	2	46" x 1/2"	16 x 1/2 x 26'-0"	16 x 1/2 x 26'-0"	26'-0"	459.5	114.6			5 x 1 1/2 @ 10'-0"	1/4" x 1 1/2" @ 10'-0"	AS SHOWN ON B-375 OPP. HAND ON B-376	
AZG-1	A-572	3782-017	B-365	2	74" x 3/8"	16 x 3/8 x 26'-0"	16 x 3/8 x 26'-0"	26'-0"	259.4	344.5			5 x 3/8 @ 2'-0"	1/4" x 3/8" @ 2'-0"	AS SHOWN ON B-365 OPP. HAND ON B-366	
AZG-2	A-572	3782-017	B-365	2	74" x 3/8"	16 x 3/8 x 26'-0"	16 x 3/8 x 26'-0"	26'-0"	279.9	268.5			5 x 3/8 @ 2'-0"	1/4" x 3/8" @ 2'-0"	AS SHOWN ON B-365 OPP. HAND ON B-366	
AZG-3	A-572	3782-017	B-368	1	42" x 7/16"	24 x 7/16 x 24'-9"	24 x 7/16 x 24'-9"	24'-9"	509.2	241.5			7 x 5/8 @ 3'-0"	1/4" x 5/8" @ 3'-0"		
AZG-4	A-572	3782-017	B-368	1	42" x 5/8"	24 x 5/8 x 24'-9"	24 x 5/8 x 24'-9"	24'-9"	320.0	455.0			6 x 3/4 @ 3'-0"	1/4" x 3/4" @ 3'-0"		
AZG-5	A-572	3782-017	B-368	1	46" x 9/16"	24 x 9/16 x 24'-9"	24 x 9/16 x 24'-9"	24'-9"	387.1	430.7			7 x 5/8 @ 3'-0"	1/4" x 5/8" @ 3'-0"		
AZG-6	A-572	3782-017	B-368	1	46" x 5/8"	20 x 5/8 x 24'-9"	20 x 5/8 x 24'-9"	24'-9"	350.0	315.0			6 x 3/4 @ 3'-0"	1/4" x 3/4" @ 3'-0"		
DZG-1	A-572	3782-017	B-367	2	46" x 3/8"	22 x 3/8 x 42'-0"	22 x 3/8 x 42'-0"	42'-0"	220.0	210.0			6 x 3/4 @ 3'-0"	1/4" x 3/4" @ 3'-0"	AS SHOWN ON B-367 OPP. HAND ON B-370	



NOTES
 1. FOR GENERAL NOTES SEE DWG. B-403

REFERENCE DRAWINGS

Drawing Release Record	
Rev.	Date Description
A	12-1-88
B	12-1-88
C	12-1-88
D	12-1-88
E	12-1-88
F	12-1-88

FUEL HANDLING & AUXILIARY BLDG GIRDER SCHEDULE
ZION STATION UNIT 1 & 2
COMMONWEALTH EDISON CO.
CHICAGO, ILLINOIS

SCALE: AS NOTED
 DRAWN: A. GEORSON 7-88
 CHECKED: J. M. KANE 12-88
 ENGINEER: J. H. LUNDY 12-88

SARGENT & LUNDY
 ENGINEERS
 CHICAGO

DRAWING NO.
B-401

D33