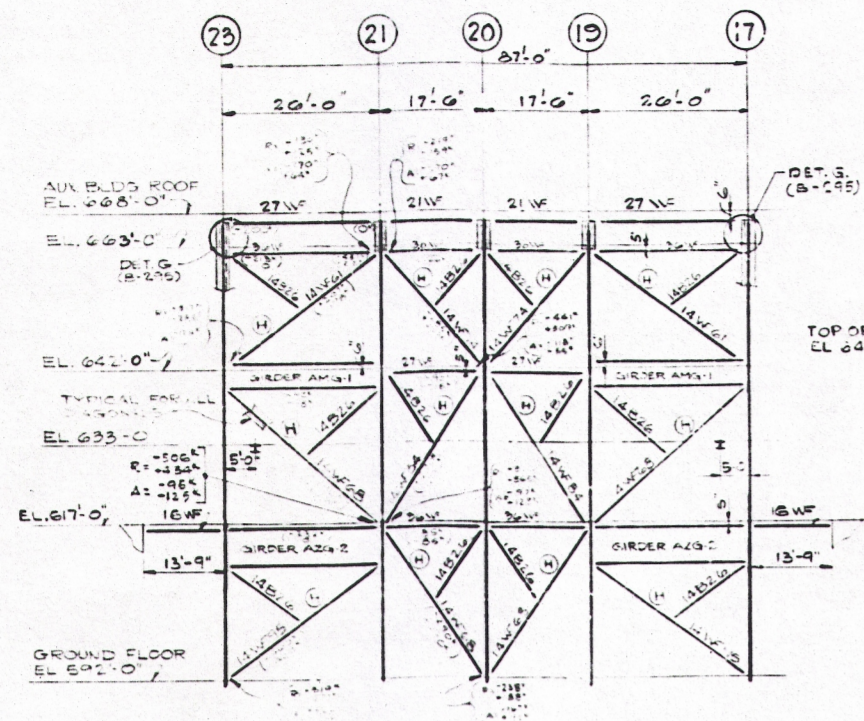
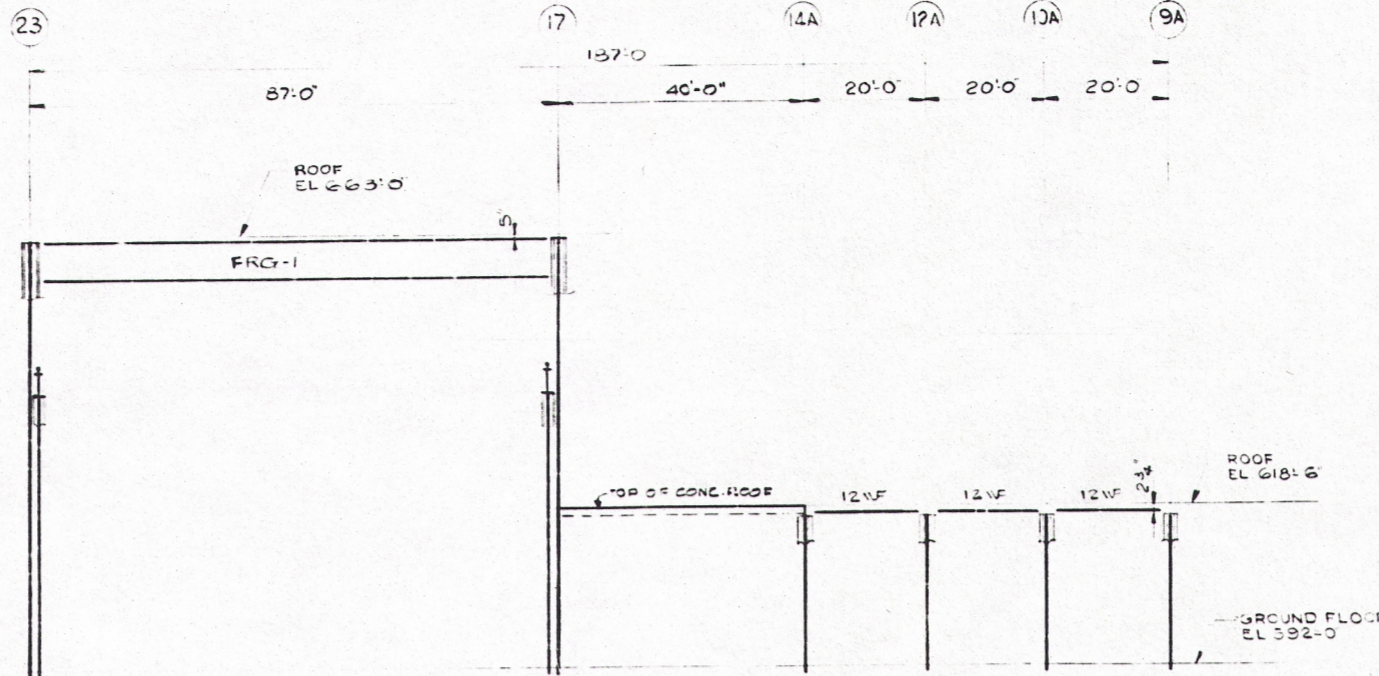


162-B

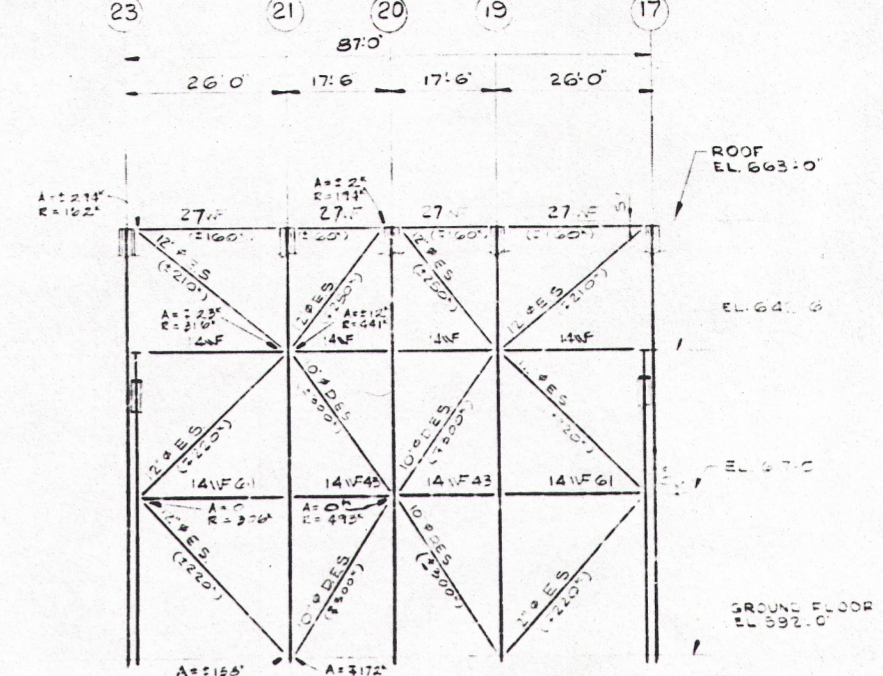


COLUMN ROW P

STEEL DETAIL OF COLUMN ROW P

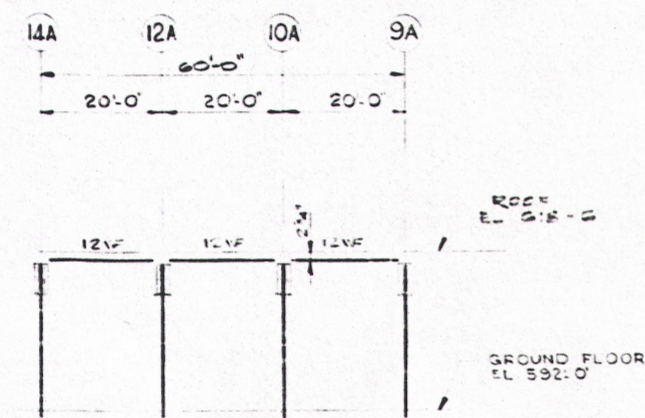


COLUMN ROW V

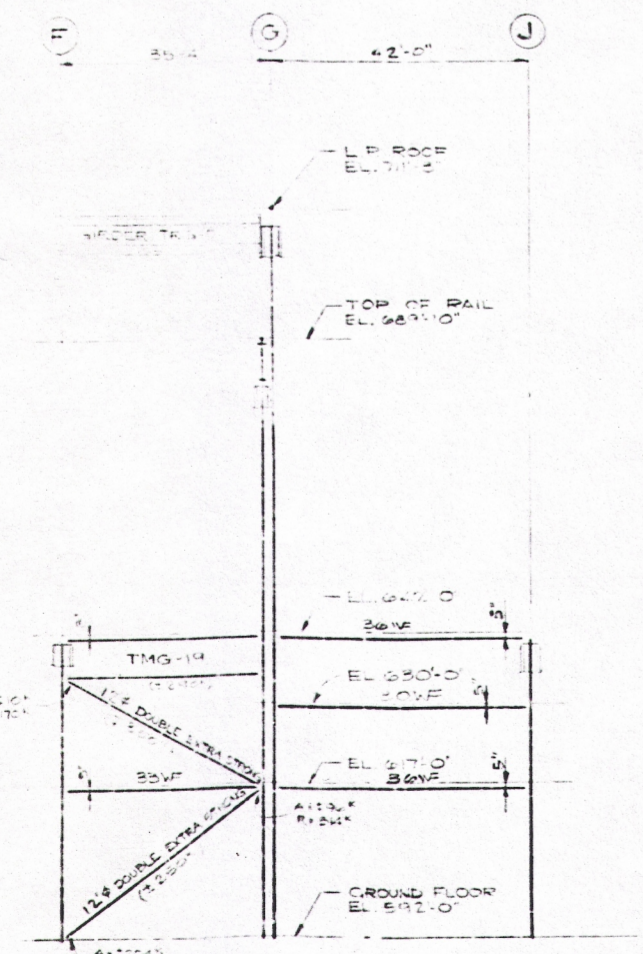


COLUMN ROW W

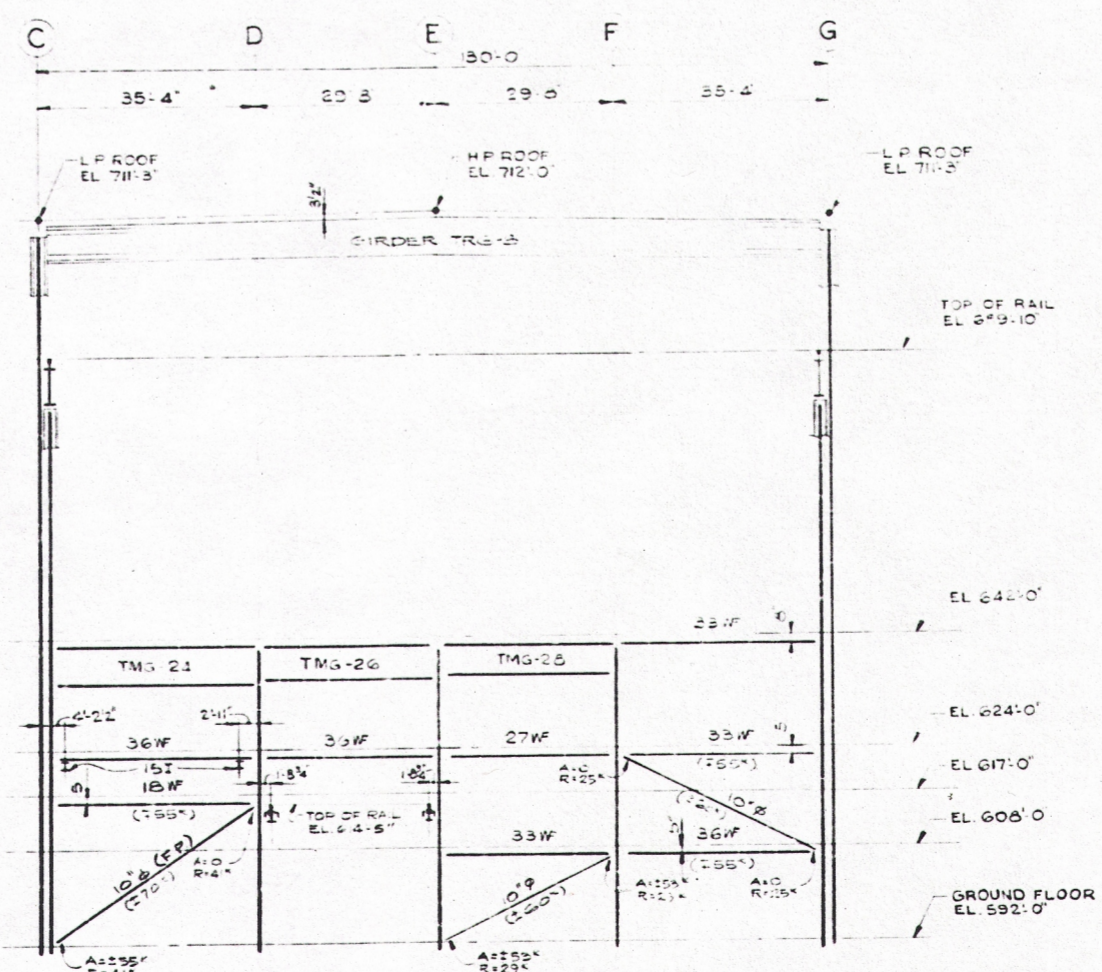
STEEL DETAIL OF COLUMN ROW W



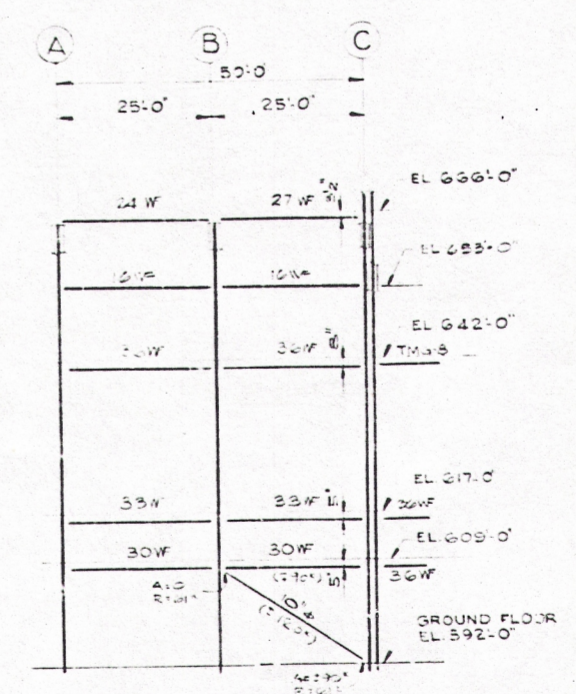
COLUMN ROW Y



COLUMN ROW 5 & 35



COLUMN ROW 38



COLUMN ROWS 15 & 25

FOR REFERENCE PROJECT 3782-2 SPEC 2.022 1-D-4-77

- NOTES**
- 1 FOR GENERAL NOTES SEE DWG. P-105
 - 2 FOR COLUMN BRACING DETAILS SEE DWG. B-29
 - 3 ALL VERTICAL DIAGONAL BRACING SHALL BE SCHEDULE 40 PIPE UNLESS NOTED
 - 4 BRACING MEMBERS MARKED THIS (FF) SHALL HAVE CONC. PRECASTING AS SHOWN ON DWG. P-105

- REFERENCE DRAWINGS**
- B-295 COLUMN BRACING BELTS & DETS.
 - B-751 AUX. BLDG. SECT. & DETS. SH-12

REV.	DATE	BY	DESCRIPTION
1	12-15-88	J. J. K...	ISSUED FOR CONSTRUCTION
2	12-15-88	J. J. K...	REVISIONS
3	12-15-88	J. J. K...	REVISIONS
4	12-15-88	J. J. K...	REVISIONS
5	12-15-88	J. J. K...	REVISIONS
6	12-15-88	J. J. K...	REVISIONS
7	12-15-88	J. J. K...	REVISIONS
8	12-15-88	J. J. K...	REVISIONS
9	12-15-88	J. J. K...	REVISIONS
10	12-15-88	J. J. K...	REVISIONS

COLUMN BRACING ROWS 15, 25, P, V, W, Y & 38 ZION STATION UNIT 1&2 COMMONWEALTH EDISON CO. CHICAGO, ILLINOIS

SCALE: 1/4" = 1'-0"

DRAWN: E. CESARIO 7-23-88

CHECKED: J. J. K... 12-15-88

ENGINEER: J. J. K... 12-15-88

PROJECT: 3782-2

JOB NO.: 0782 0855

SARGENT & LUNDY ENGINEERS CHICAGO

DRAWING NO. **B-291**

D21