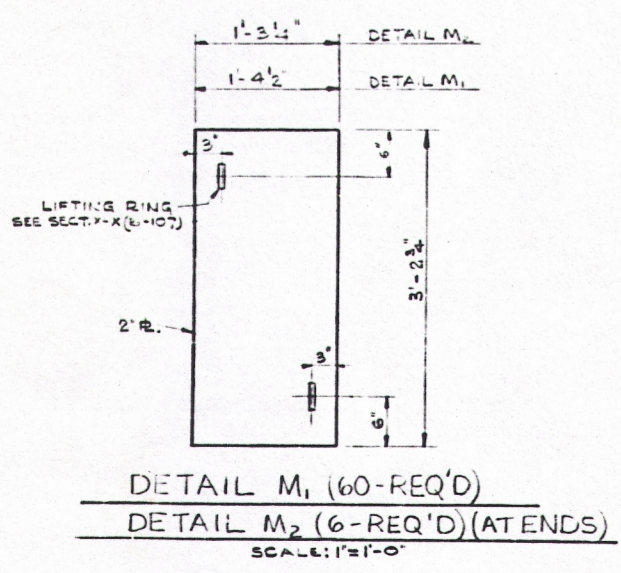


BY SUPERSTRUCTURE CONTRACTOR (WALL ONLY)

BY SUPERSTRUCTURE CONTRACTOR



**NOTES**

- FOR GENERAL NOTES SEE DWG. B-116 & B-117.
- FOR REFERENCE DRAWINGS SEE B-116 & B-117.
- ALL WORK SHOWN ON THIS DRAWING SHALL BE IN ACCORDANCE WITH JOB SPEC. K-1002 UNLESS OTHERWISE NOTED.

**REFERENCE DRAWINGS**

B-116 RE. HANDLING BLDG. FOUND. PLAN EL. 0.1'-0" EAST AREA

| Rev. | Date     | Description        |
|------|----------|--------------------|
| 1    | 1-15-78  | ISSUED FOR PERMITS |
| 2    | 2-15-78  | REVISIONS          |
| 3    | 3-15-78  | REVISIONS          |
| 4    | 4-15-78  | REVISIONS          |
| 5    | 5-15-78  | REVISIONS          |
| 6    | 6-15-78  | REVISIONS          |
| 7    | 7-15-78  | REVISIONS          |
| 8    | 8-15-78  | REVISIONS          |
| 9    | 9-15-78  | REVISIONS          |
| 10   | 10-15-78 | REVISIONS          |
| 11   | 11-15-78 | REVISIONS          |
| 12   | 12-15-78 | REVISIONS          |

**FUEL HANDLING BLDG. FOUNDATION**  
**SECTION D-D**  
**ZION STATION UNITS 1 & 2**  
**COMMONWEALTH EDISON CO.**  
**CHICAGO, ILLINOIS**

SCALE: 1/4"=1'-0"

DRAWN: D. DRISCOLL  
 CHECKED: J. J. JONES  
 ENGINEER: J. J. JONES  
 APPROVED: J. J. JONES

**SARGENT & LUNDY**  
 CHICAGO

DRAWING NO. **B-121**

D12