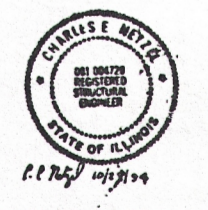


- NOTES**
1. FOR GENERAL NOTES SEE DWG. B-151 & B-283.
  2. FOR REFERENCE DRAWINGS SEE B-108.
  3. ALL WORK SHOWN ON THIS DRAWING SHALL BE IN ACCORDANCE WITH JOB SPEC. X-2223 UNLESS OTHERWISE NOTED.

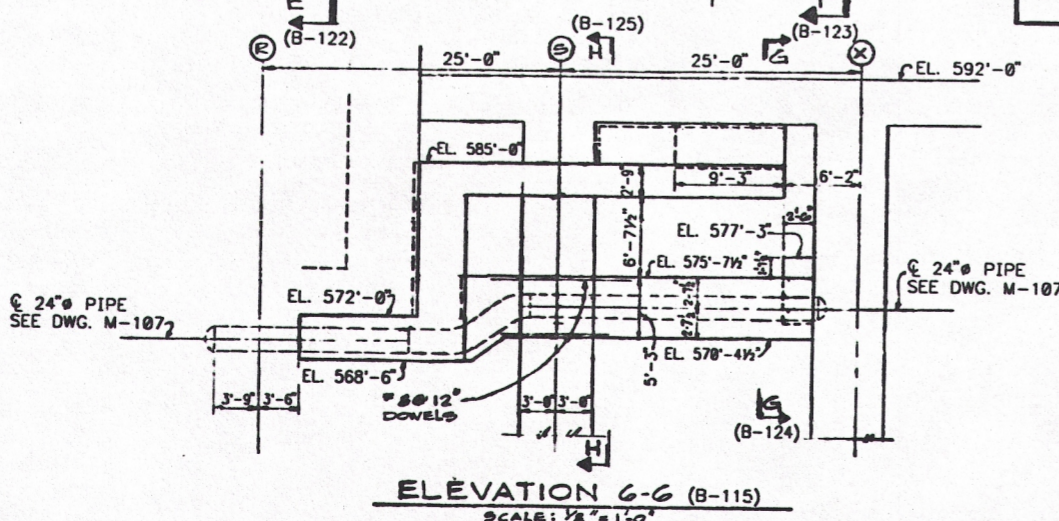
**REFERENCE DRAWINGS**

B-108 FUEL HANDLING BLDG. FOUNDATION EL. 617'-0" EAST AREA.



**SAFETY RELATED**

**SECTION C-C (B-114 & B-115)**



**DRAWING RELEASE RECORD**

| REV | DATE     | PURPOSE  | PREPARED    | REVIEWED    | FILED |
|-----|----------|--|-------------|-------------|-------|
| M   | 10-21-79 | FOR RECORD PER JOB SPEC. X-2223 (CONC. ENCASEMENT) | [Signature] | [Signature] |       |

**DRAWING RELEASE RECORD**

| REV | SPEC. NO. | DATE     | DESCRIPTION                                      |
|-----|-----------|----------|--|
| L   |           | 10-25-79 | DESCRIPTION: ADDED CORE HOLE AS BUILT FOR RECORD |

**ComEd**  
Chicago, Illinois  
Zion Station 22

ZION STATION UNIT 1 & 2  
FUEL HANDLING BLDG. FOUNDATION  
SECTION C-C

B-120

D11