

R 77 W

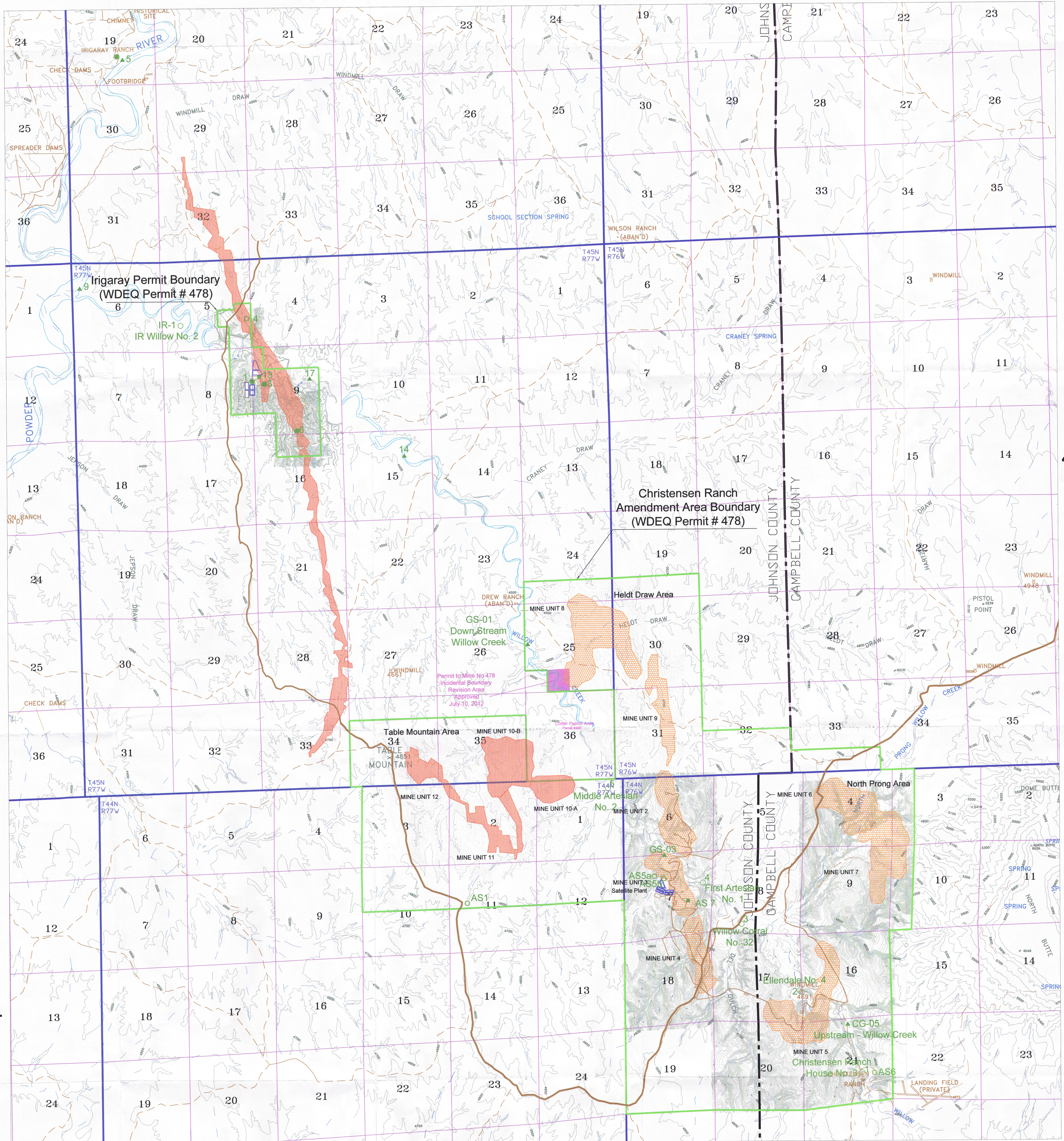
R 76 W

T 45 N

T 45 N

T 44 N

T 44 N

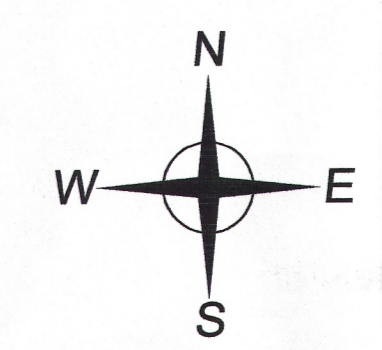
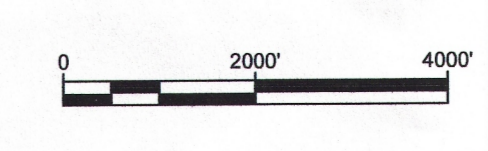


R 77 W

R 76 W

LEGEND

- Wellfield Access Roads
- Haul Road
- Wellfield Area - Existing
- Wellfield Area - Future
- Evaporation Ponds
- Topsoil Stockpile
- Incidental Boundary Revision Area
- Mine Unit 10 Incidental Boundary Revision
- Air Sample Location (Radon and Particulate)
- Air Sample Location (Radon and Particulate)
- Vegetation Sample Location
- Soil Sample Location
- Direct Radiation Monitor Location
- Air Sample Location (Radon)
- Vegetation Sample Location
- Soil Sample Location
- Direct Radiation Monitor Location
- Stock & Domestic Well Sample Location
- Regional Groundwater Monitoring Location
- Upstream & Downstream Surface Water Sample Location



uraniumone™
investing in our energy
907 North Poplar St., Suite 200 Casper, WY 82601 307-234-8235

Irigaray & Christensen Ranch
Environmental Monitoring
Station Locations
Permit to Mine #478
Johnson & Campbell Counties, Wyoming
2011-2012 Annual Report to WDEQ-LQD

Rev. No.	Description	Date	By	Sheet:
1	Moved location of GS-01	August, 2010	CEO U1	
2	Added AS 7 to CR Monitoring Locations	Sept, 2012	CEO U1	
3				
4				

Date: September 2012 By: CMI August 2009 Checked: _____

1003