



Draft Interim Staff Guidance on Surge and Seiche for Use in Recommendation 2.1 Evaluations

September 12, 2012

Henry Jones, Hydrologist

Hydrology and Meteorology Branch

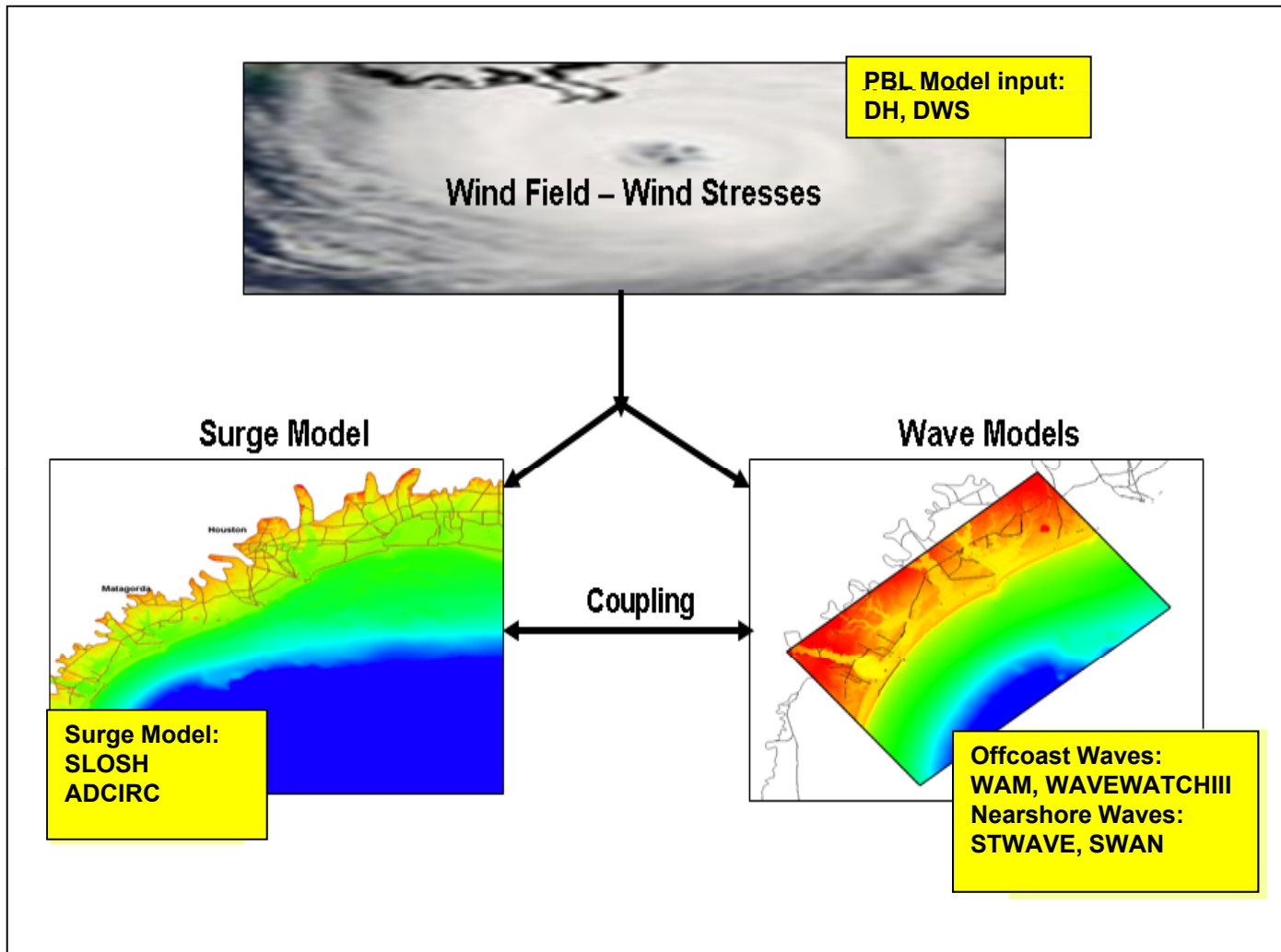
Division of Site Safety and Environmental Analysis

Office of New Reactors

Purpose: Supplemental guidance to method for performing a surge and seiche assessment as referred to in the March 12, 2012 NRC letter

Key Positions:

- **Formalizes Hierarchical Hazard Assessment (HHA) approach**
- **Continues use of NOAA Tech Memo NWS 23 (PMH) deterministic method**
- **Introduces risk-informed USACE deterministic-probabilistic methods: Joint Probability Method (JPM) and Empirical Simulation Technique (EST)**
- **Requires detailed surge modeling (ADCIRC, SLOSH) for surge assessment**
- **Provides simplified and detail methods for seiche assessment**



Storm Surge Modeling System

APPENDIX A: STORM SURGE HIERARCHIAL HAZARD ASSESSMENT (HHA)
FLOW CHART

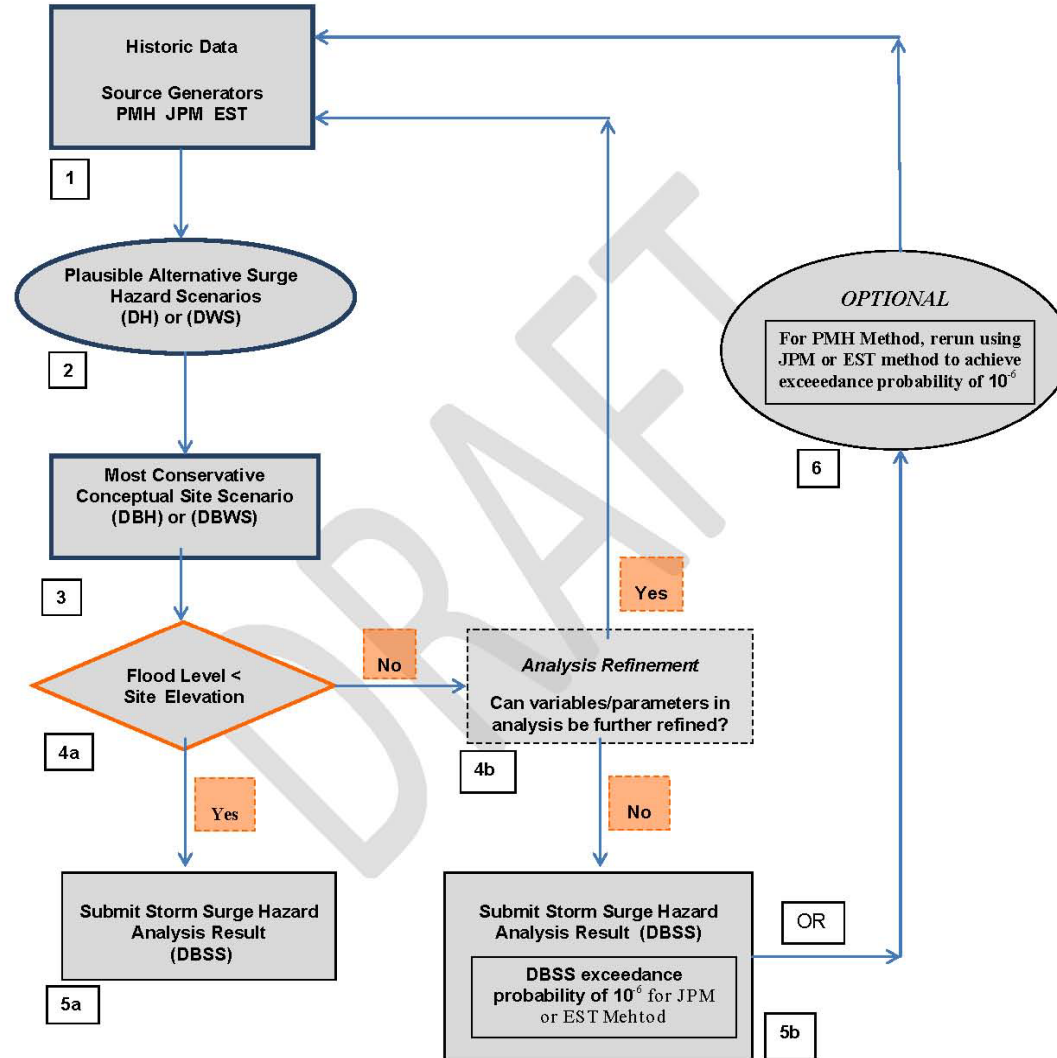


Figure A.1. HHA approach for storm surge