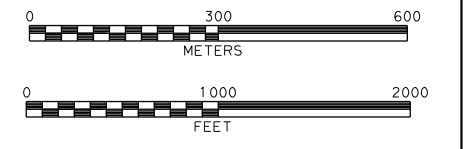
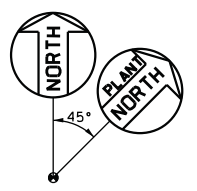


NOTES:
 1. THE HORIZONTAL COORDINATES ARE FLORIDA STATE PLANE COORDINATES, WEST ZONE AND ARE BASED ON THE NORTH AMERICAN DATUM OF 1983 (NAD83).

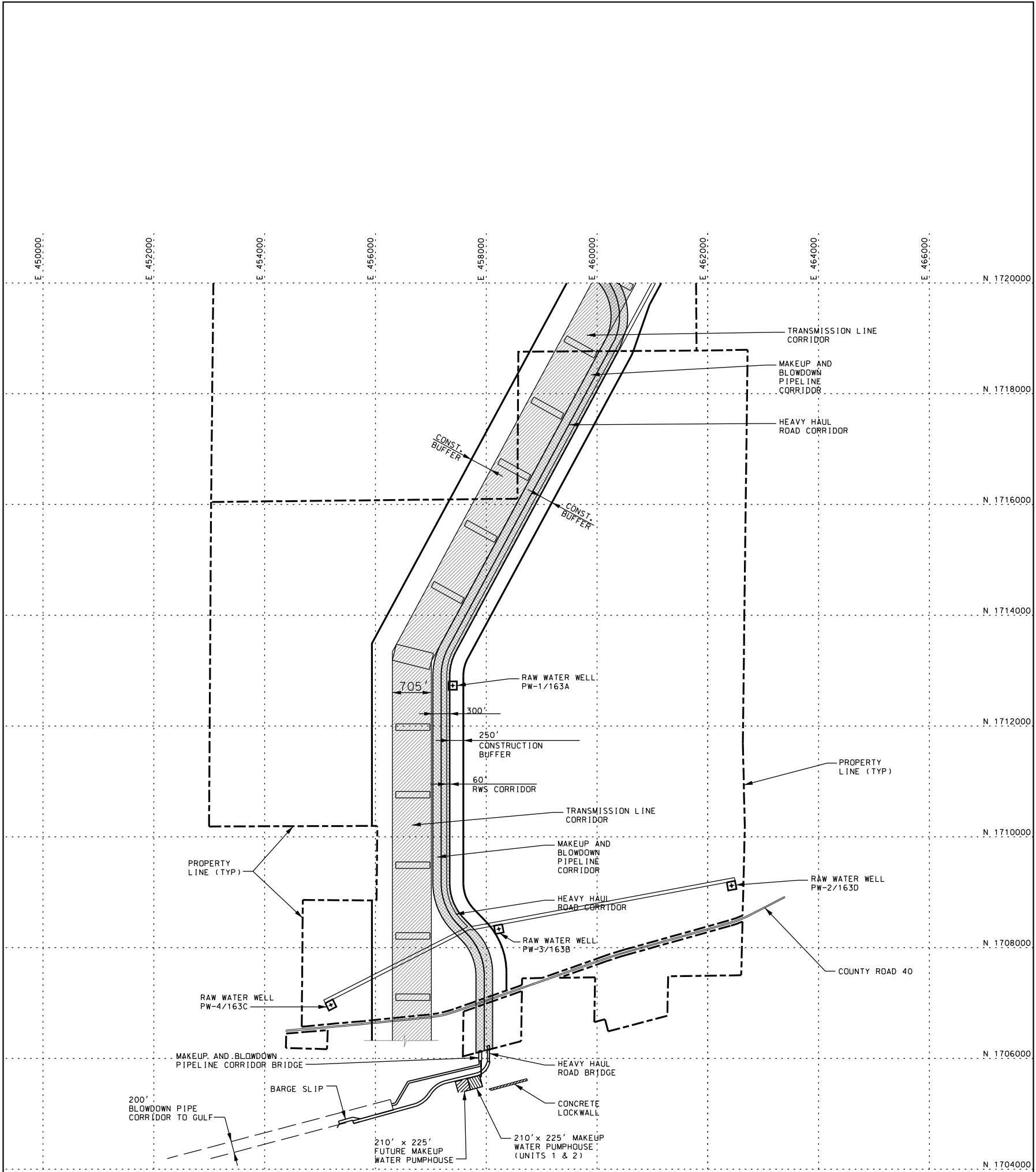
LEGEND:
 - - - - - DENOTES BOUNDARY OF THE PLANT DESIGN FEATURES IN THE SCOPE OF AP1000 CERTIFICATION.



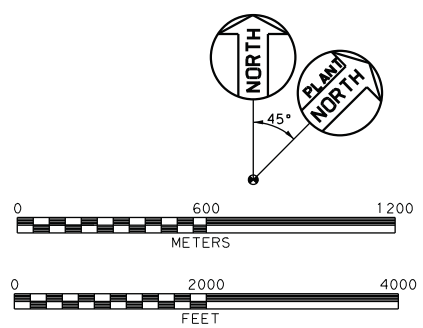
Progress Energy Florida
**Levy Nuclear Plant
 Units 1 and 2
 Part 2, Final Safety Analysis Report**

Site Layout
 Figure 1.1-201 (Sheet 1 of 2)

Rev 3



NOTES:
 1. THE HORIZONTAL COORDINATES ARE FLORIDA STATE PLANE COORDINATES, WEST ZONE AND ARE BASED ON THE NORTH AMERICAN DATUM OF 1983 (NAD83).



Progress Energy Florida
**Levy Nuclear Plant
 Units 1 and 2
 Part 2, Final Safety Analysis Report**

Site Layout
 Figure 1.1-201 (Sheet 2 of 2)
 Rev 3