

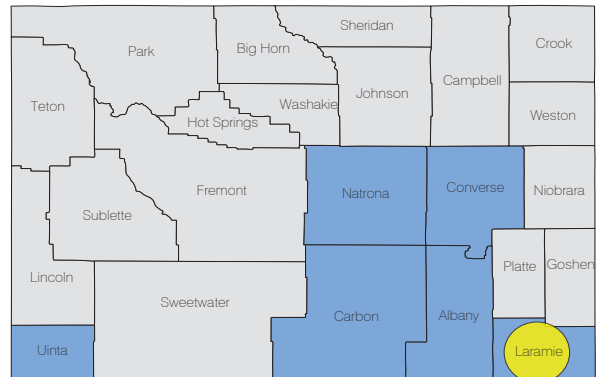
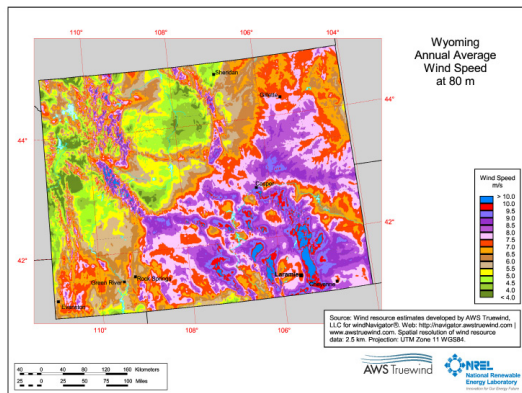
# WIND ENERGY FACTS: WYOMING

## Developing Wyoming's incredible wind resources creates economic development for the state

### WIND PROJECTS

Currently online: 1,412 Megawatts (MW)  
Added in 2010: 311 MW  
Wind projects in queue: 7,869.5 MW

Wyoming added the 7th most new wind capacity in 2010. It currently ranks 11th in overall installed capacity.



Blue counties have installed wind capacity. Yellow dots represent announced manufacturing facilities.

### GENERATION AND POTENTIAL

Percentage of Wyoming power provided by wind in 2010: 6.7%

Equivalent number of homes Wyoming wind farms now power: 400,000

State wind resource: 552,073 MW at 80 meters hub heights  
Wyoming's wind resource is ranked 8th in the US.

According to a resource assessment from the National Renewable Energy Lab, Wyoming's wind resource could provide 116 times the state's current electricity needs.

### ECONOMIC AND ENVIRONMENTAL BENEFITS

Investment in wind power is an investment in jobs, including jobs in operations and maintenance, construction, manufacturing and many support sectors. In addition, wind power projects produce lease payments for landowners and increase the tax base of communities.

- Total direct and indirect jobs supported in 2010: 500-1,000
- Annual property tax payments by wind project owners: \$10.5 million
- Annual land lease payments: \$4 million

Generating wind power creates no emissions and uses no water. The wind power installed in Wyoming will avoid 2.8 million metric tons of carbon dioxide emissions annually.

In 2011, Worthington Industries and Gestamp Renewables announced plans to build a \$40 million wind tower manufacturing plant in Cheyenne during 2012.

### EVENTS

Wyoming exhibitors at WINDPOWER 2011: 4

Published January 2012 | Calculations based on national and state averages

FOR MORE INFORMATION, PLEASE CONTACT: [windmail@awea.org](mailto:windmail@awea.org)

AMERICAN WIND ENERGY ASSOCIATION  
WWW.AWEA.ORG | 202.383.2500 | 1501 M St. NW, SUITE 1000, WASHINGTON, D.C.

