

Assessment Context

Workshop on Performance Assessment
of Near-Surface Disposal Facilities
August 29, 2012

Christopher McKenney, Chief,
Performance Assessment Branch



Answering the Questions

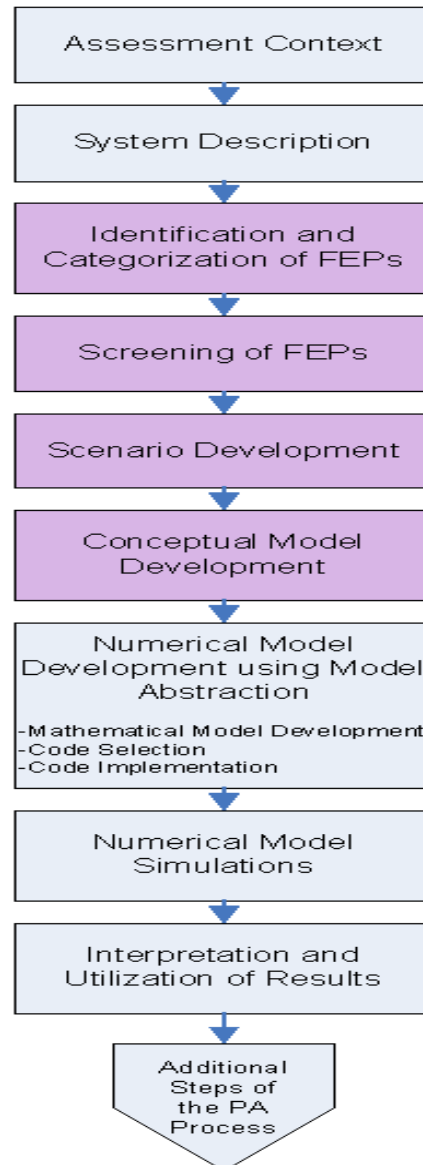


- What is being assessed?
- Why is it being assessed?
- What is the scope of the assessment?



PA Methodology

Initial Steps of the Performance Assessment Process



Components of an Assessment Context

- Purpose of the assessment
- Regulatory framework
- Assessment end points
- Assessment philosophy
- Waste characteristics
- Disposal system characteristics
- Assessment timeframes



Benefits of a Well-Defined Assessment Context



- Clearly describes scope of this assessment
- Can be used to screen components of the analysis
 - Feature, Events, and Processes
 - Computational methods
 - Data and code needs
- Provides a comparison point with other assessments



Workshop's Assumption



- An assessment context has been developed
- There are satisfactorily clear descriptions of each of the components
- A single safety case may require several different assessments (and assessment contexts)



Further Information



- IAEA report on Safety Assessment Methodologies for Near Surface Disposal Facilities (2004)

http://www-pub.iaea.org/MTCD/publications/PDF/ISAM/IAEA-ISAM-Vol1_web.pdf

http://www-pub.iaea.org/MTCD/publications/PDF/ISAM/IAEA-ISAM-Vol2_web.pdf

- Phil Metcalf's (IAEA) ANSN training course on Assessment Context (2007)

<http://www.ansn.org/ansn.org/Common/Documents/apmd/asia280p3.pdf>

