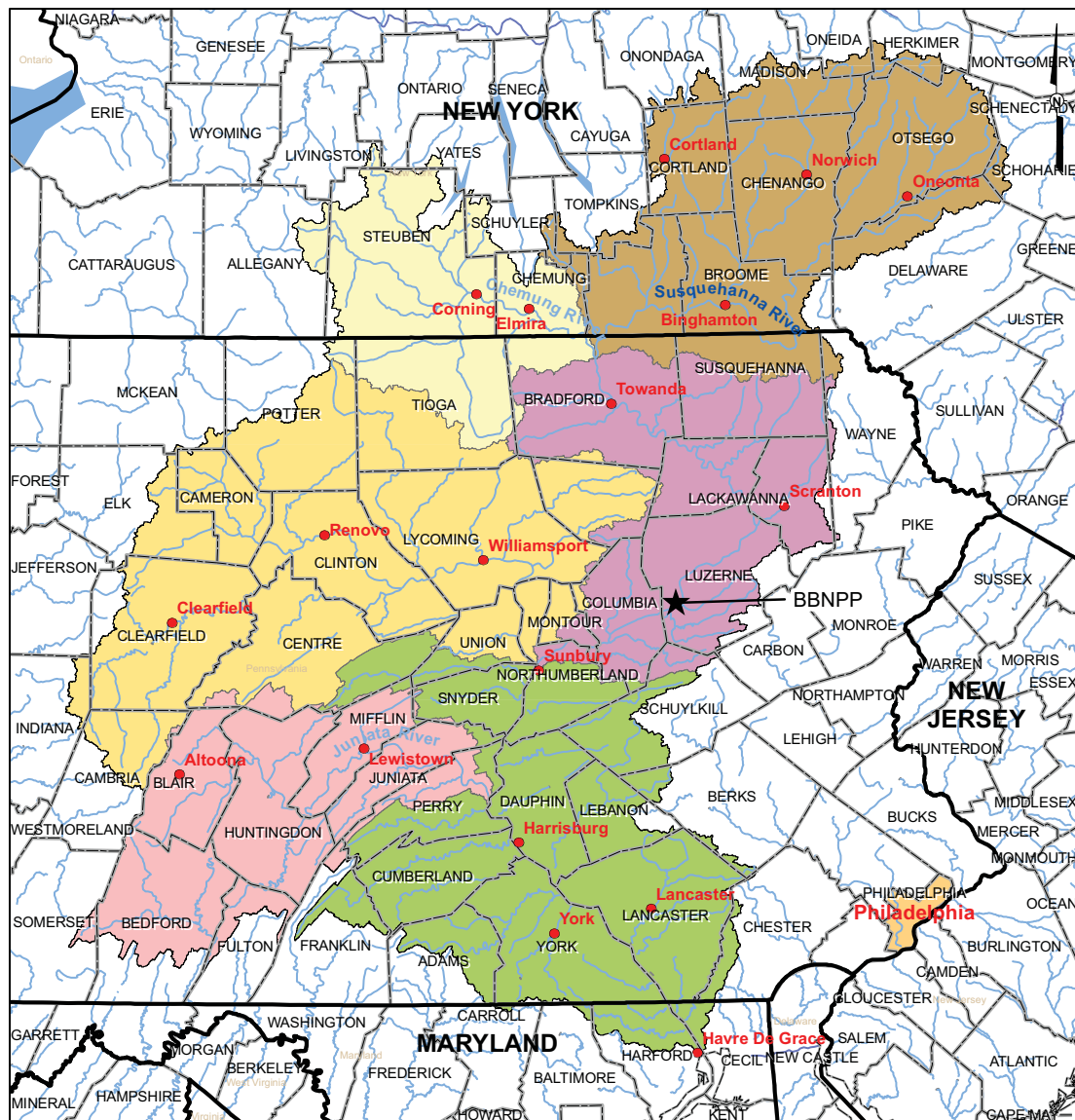
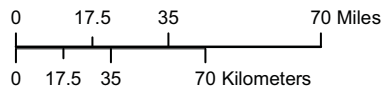


Figure 2.4-1— {Susquehanna River Basin and Sub-basins}



LEGEND

- ★ Center Point of Proposed Bell Bend NPP (BBNPP)
- Susquehanna River Subbasins
 - Chemung
 - Juniata
 - Lower Susquehanna
 - Middle Susquehanna
 - Upper Susquehanna
 - West Branch Susquehanna
- Waterbody
- County Boundary
- State Boundary

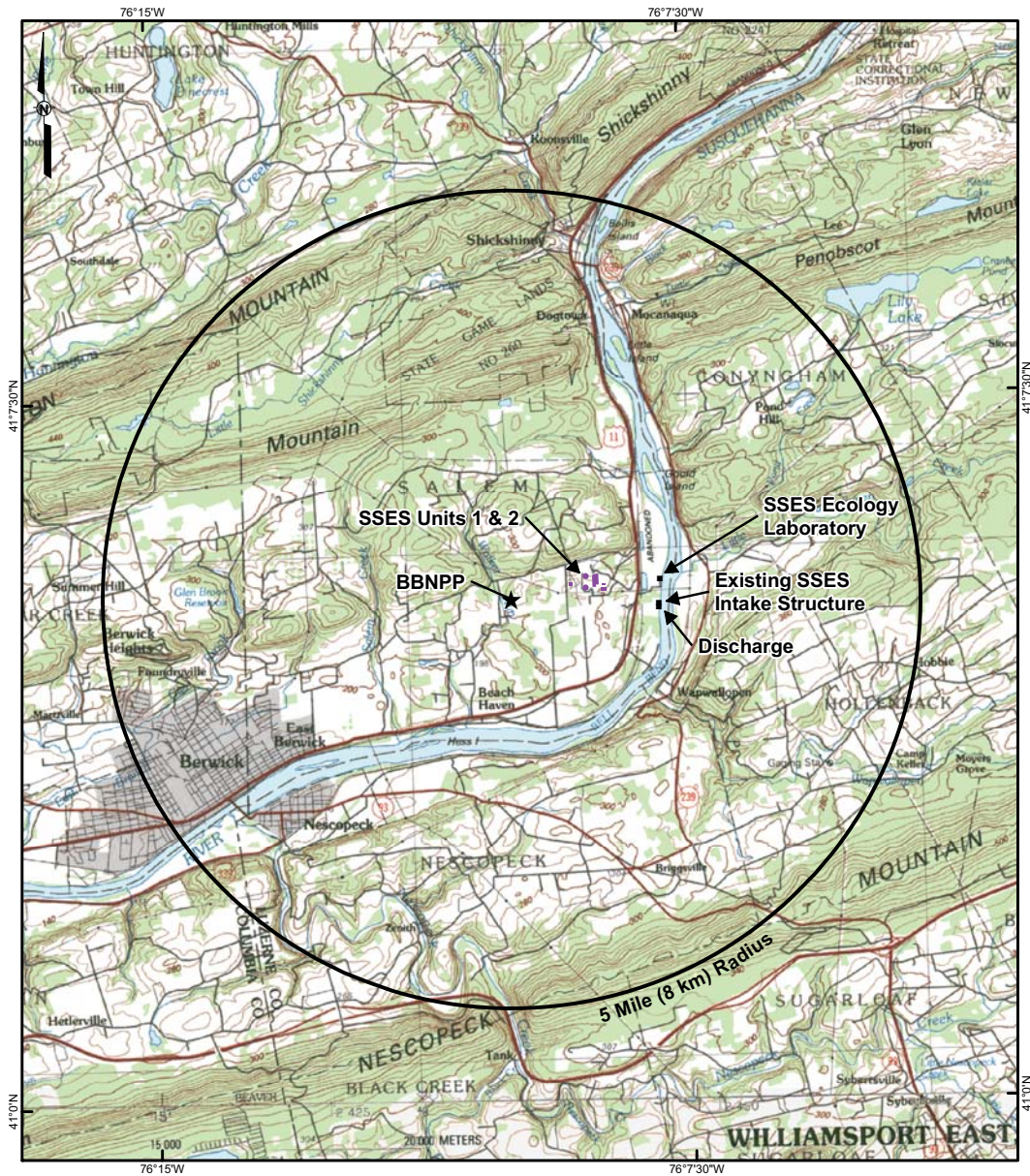


REFERENCES:

- ESRI StreetMap Pro [CD-ROM], 2007, Waterbody, Roads, County, Boundary, and City.
- Susquehanna River Basin Commission, 2006, Susquehanna River Basin Subbasins

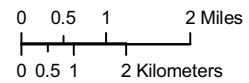
10-4310-GIS-A015

Figure 2.4-2— {Site Area Topographic Map 5 Mile (8 km) Radius}



LEGEND

- ★ Center Point of Proposed Bell Bend NPP (BBNPP)
- BBNPP Reactor 5 Mile (8 km) Radius

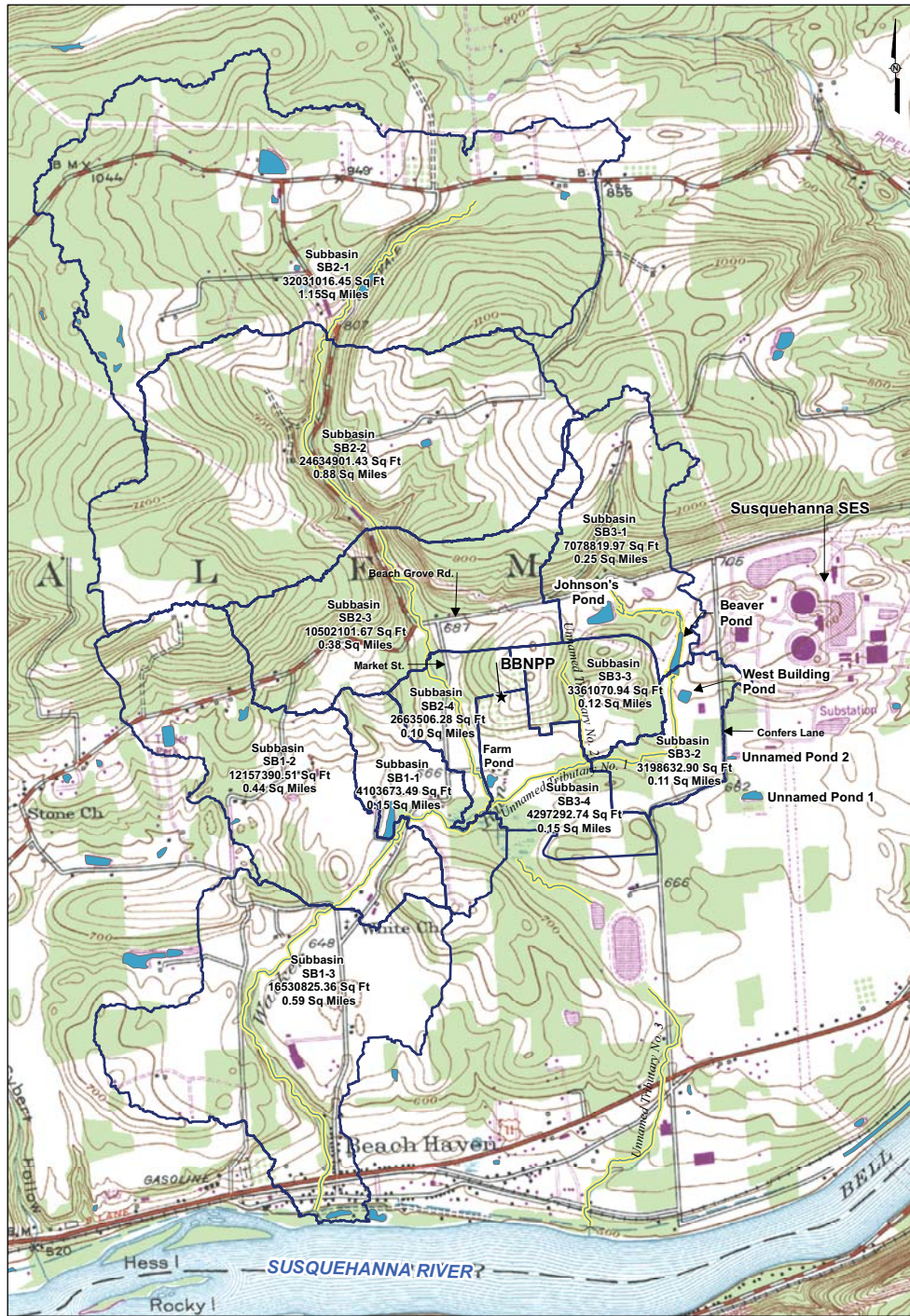


NOTE:
Contour elevations are in meters.

REFERENCE:
USGS, 1984

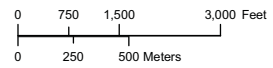
10-4310-GIS-A002

Figure 2.4-3— {Walker Run Watershed}



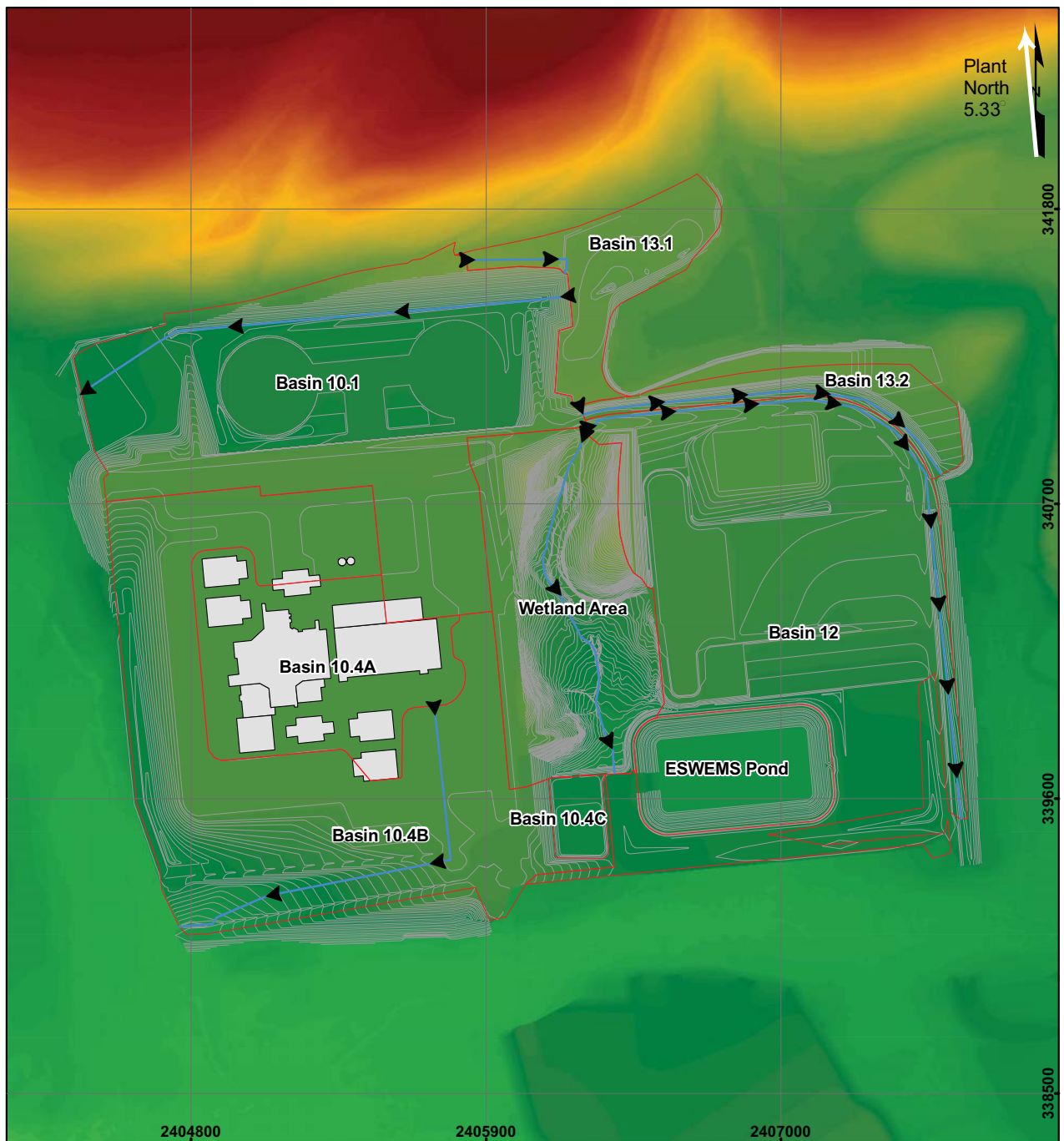
LEGEND
 ★ Center Point of Proposed Bell Bend NPP (BBNPP)
 — Subbasin Boundary
 Lake/Pond
 Perennial Streams

REFERENCE:
 • USGS 7.5-minute Quadrangles: Berwick and Sybertsville, 1955, Photo revised 1989.








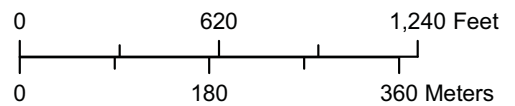
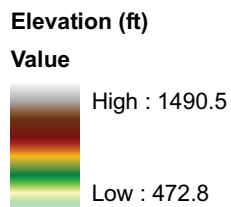
10-4310-GIS-A003

Figure 2.4-4— {Site Drainage Flow Pattern}



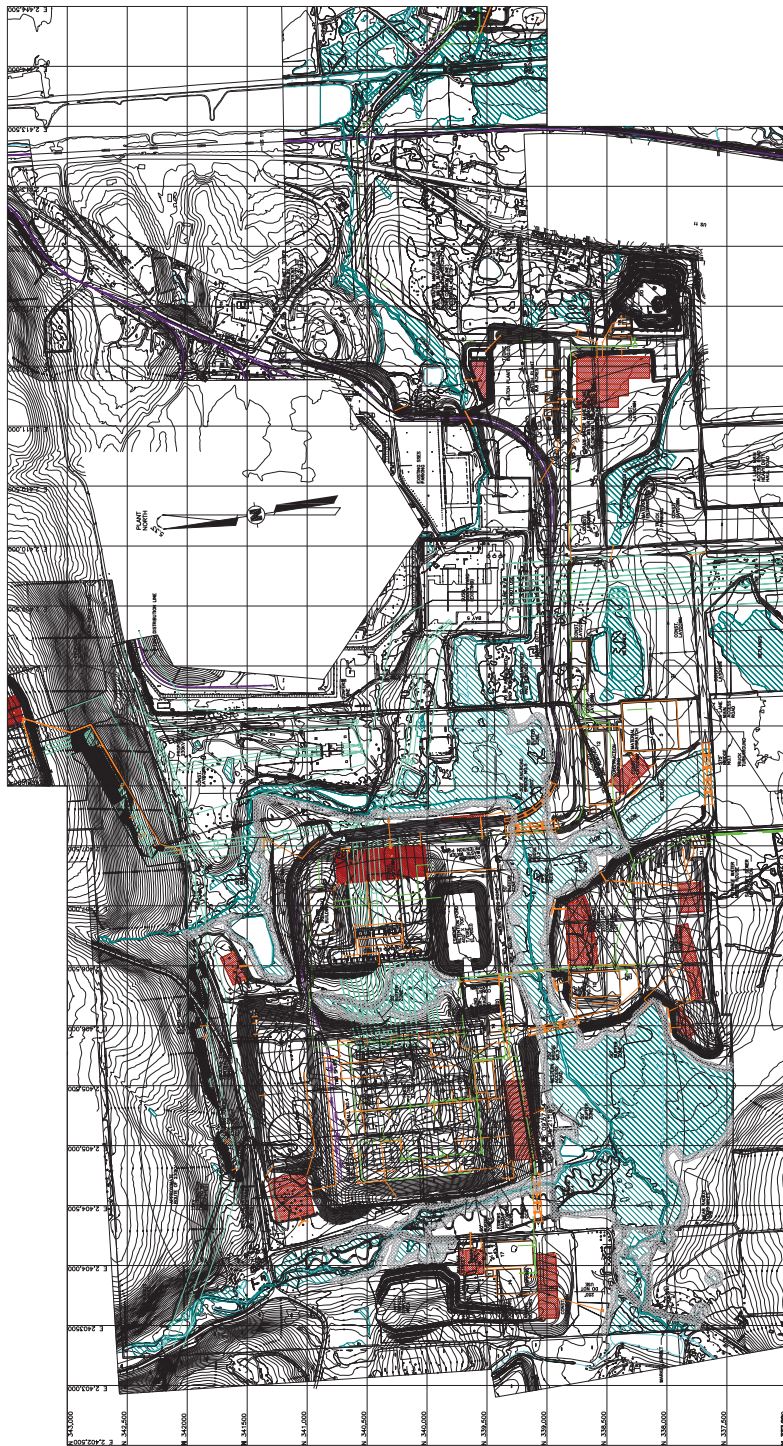
Legend

-  Drainage Path
-  Drainage Areas
-  Powerblock Structures
-  Conceptual Site Grading
-  Flow Direction



10-4310-GIS-A199

Figure 2.4-5—{Site Utilization Plant Layout}



LEGEND

EXISTING CONTOURS	OWNER CONTROLLED AREA	ROAD
FENCE LINE	MANHOLE	RAILROAD TRACK
SLOPE	CONTROL STRUCTURE	ISOLATION ZONE
DRAINAGE DITCH	INFLUENT DITCH	ISOLATION BED
EXISTING ELECT. TOWERS	CULVERT	SHANK LINK FENCE
ROCK FILTER	EL. ELEVATION	DRAINAGE AREA TO EACH INFILTRATION BED
WETLANDS	INVERT	
WELLS	1/4" TOP OF ROAD	
WELLS BUFFER	1/4" TOP OF FOUNDATION	
WATER BODIES		
TRANSMISSION LINE		
WATER TRANSMISSION TOWER		

10-4310-000-403

Figure 2.4-6— {Susquehanna River Profile}

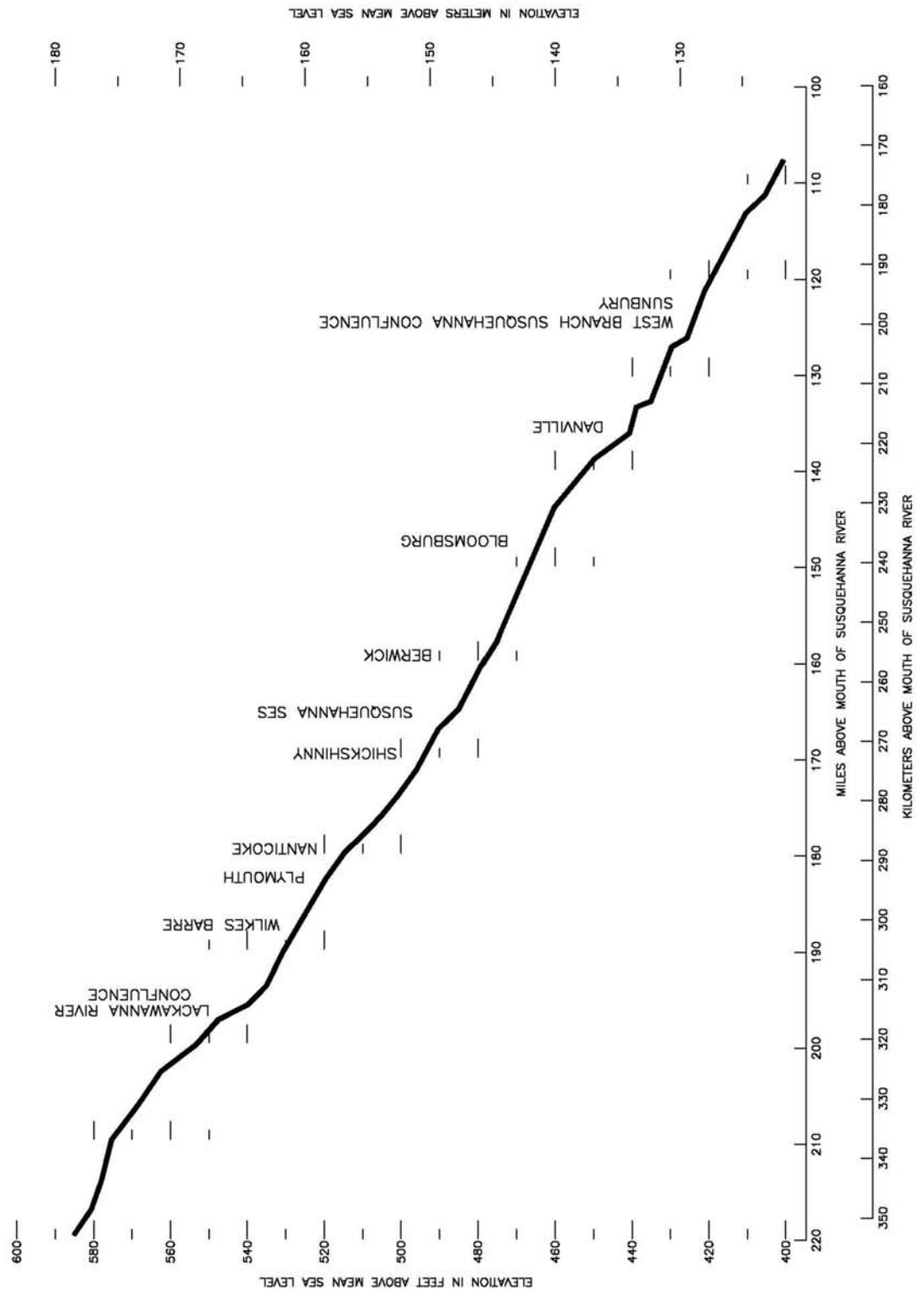
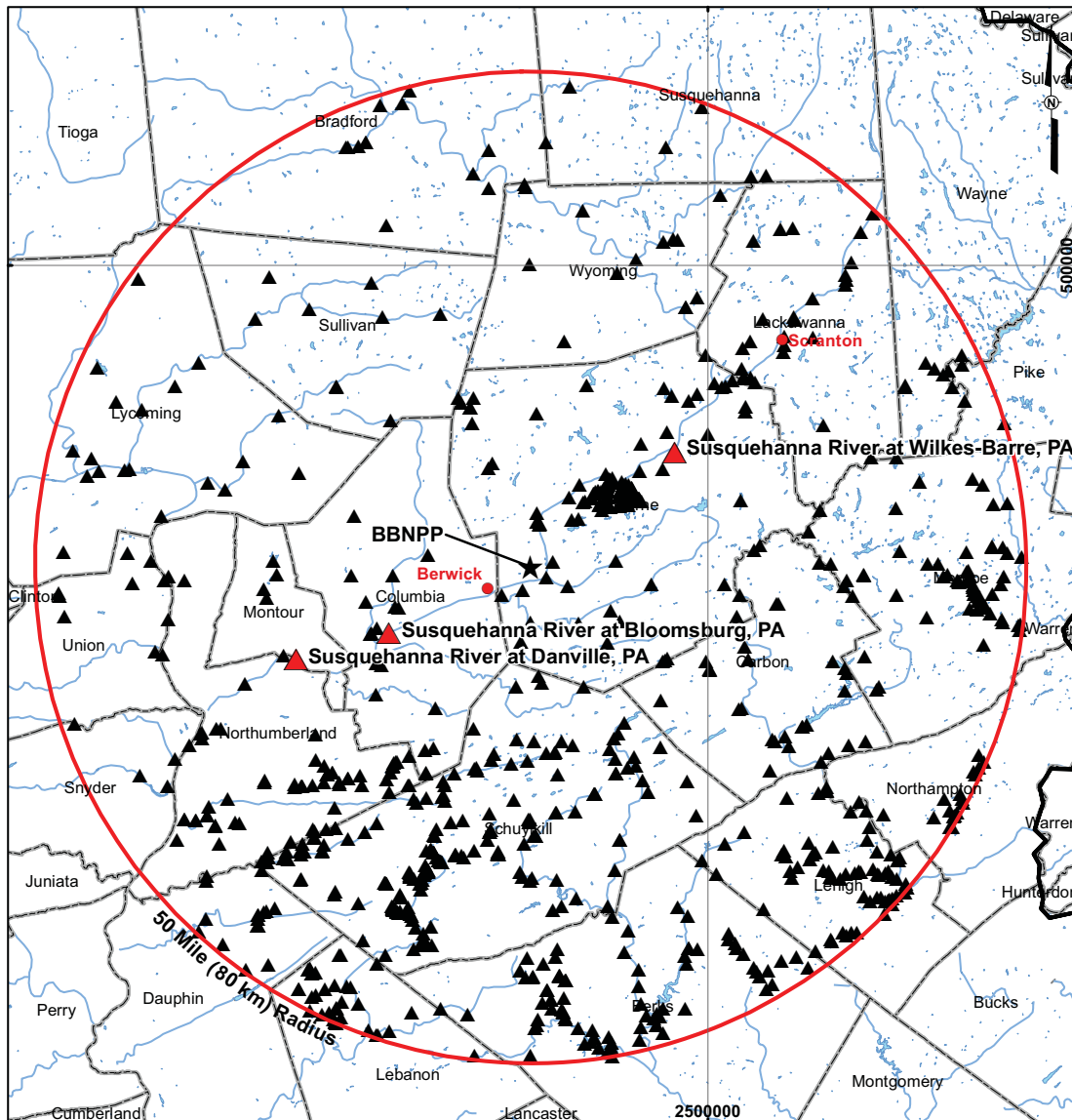
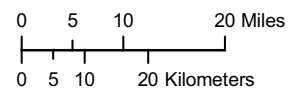


Figure 2.4-7— {USGS Stream Gauges within a 50 Mile (80 Km) Radius}



LEGEND

- ★ Center Point of Proposed Bell Bend NPP (BBNPP)
- ▲ USGS Stream Gauges
- ▲ Selected USGS Stream Gauges
- City
- BBNPP Reactor 50 Mile (80 km) Radius
- Waterbody
- County Boundary
- State Boundary

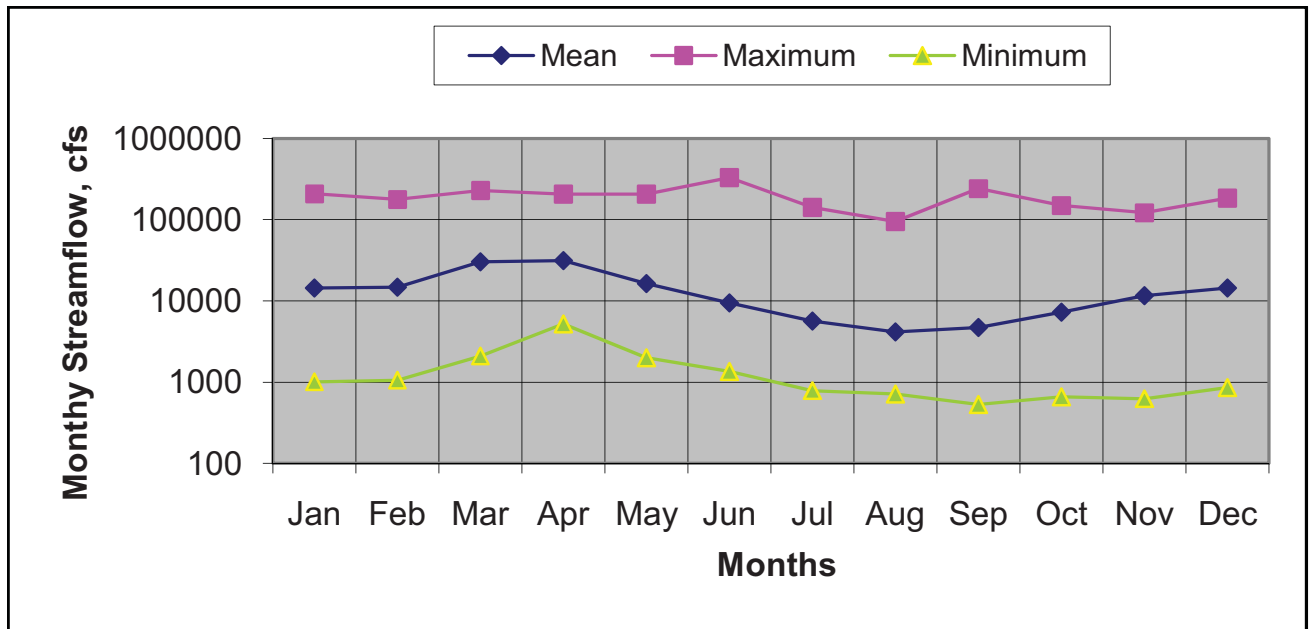


REFERENCES

- ESRI, 2007
- USGS, 2008

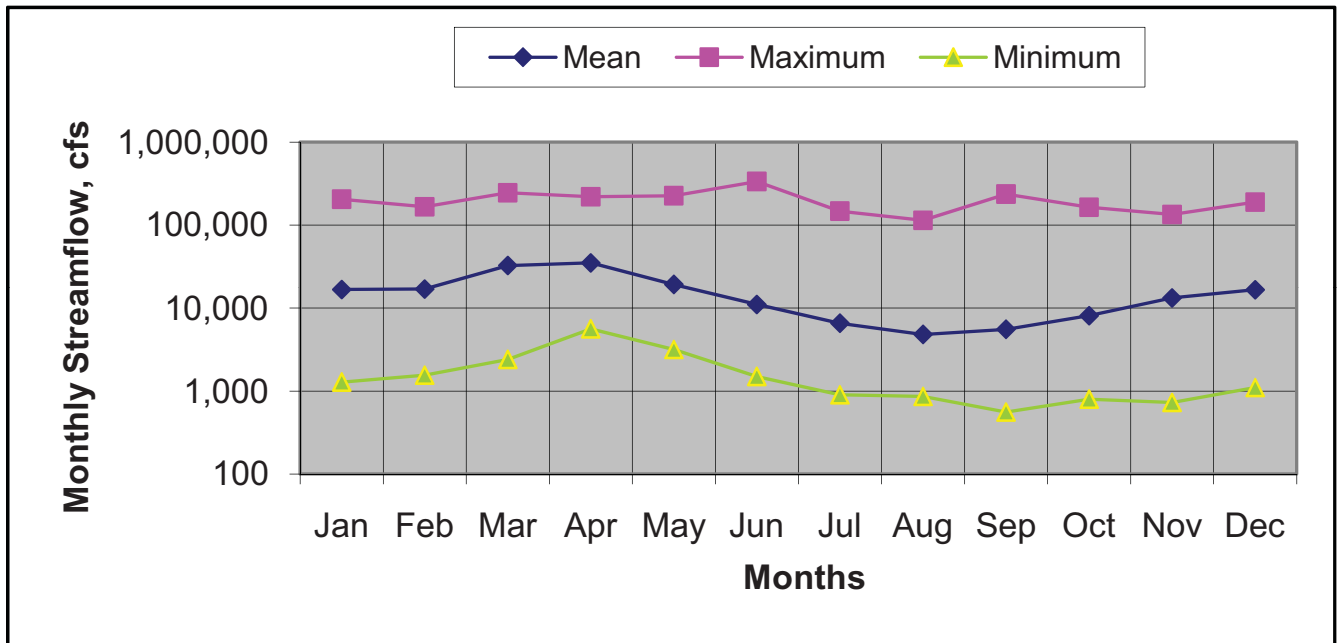
10-4310-GIS-A004

Figure 2.4-8— {Mean, Maximum & Minimum Monthly Streamflows for Wilkes-Barre, PA USGS 01536500, (1900 through 2007)}



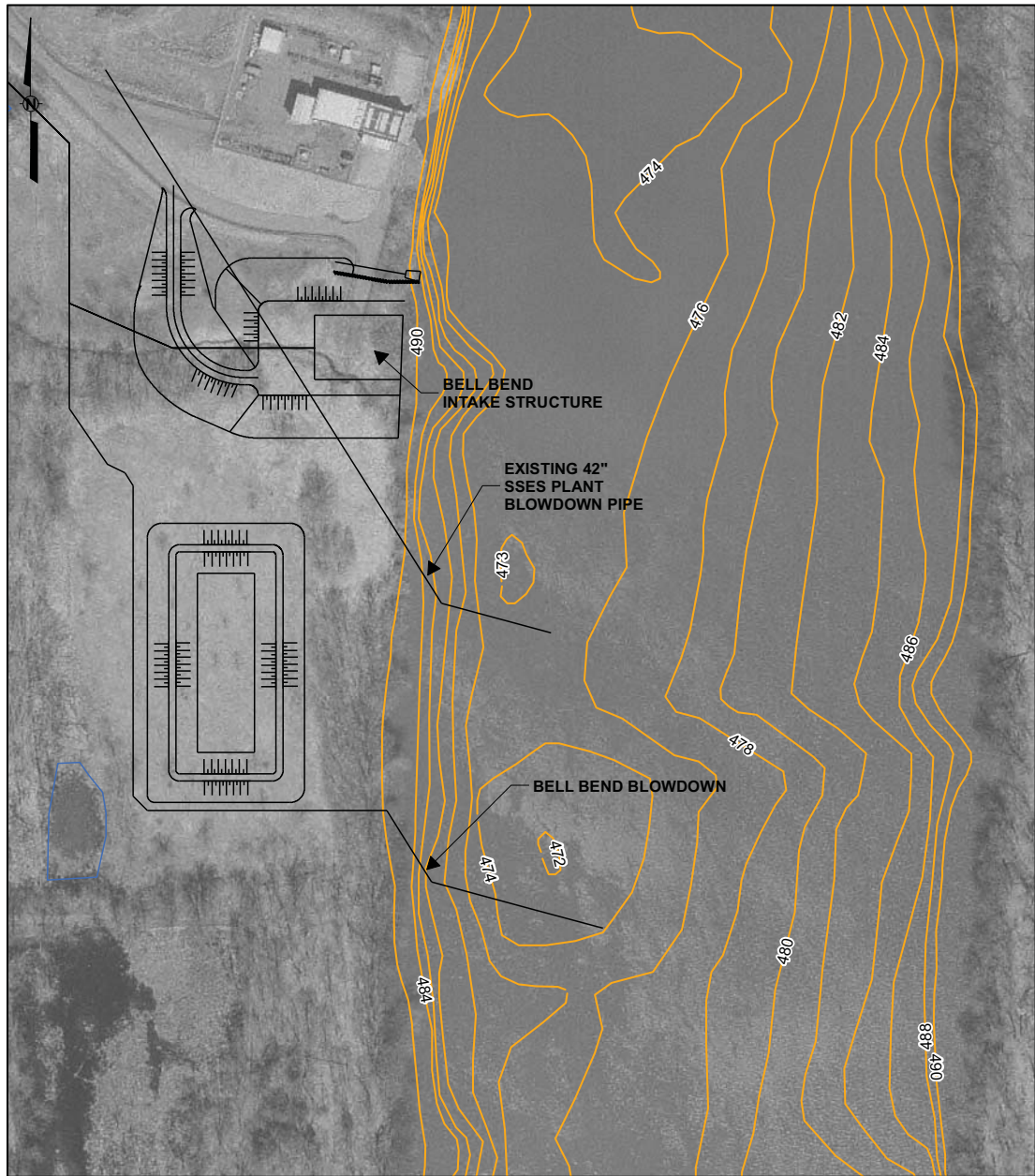
Source: USGS, 2008i

Figure 2.4-9— {Mean, Maximum & Minimum Monthly Streamflows for Danville, PA USGS 01540500 (1905 through 2007)}



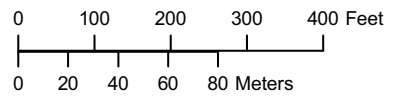
Source: USGS, 2008h

Figure 2.4-10— {Susquehanna River Bathymetry near Intake & Blowdown Structures}



LEGEND

— Bathymetry - 2FT CONTOURS



10-4310-GIS-A200