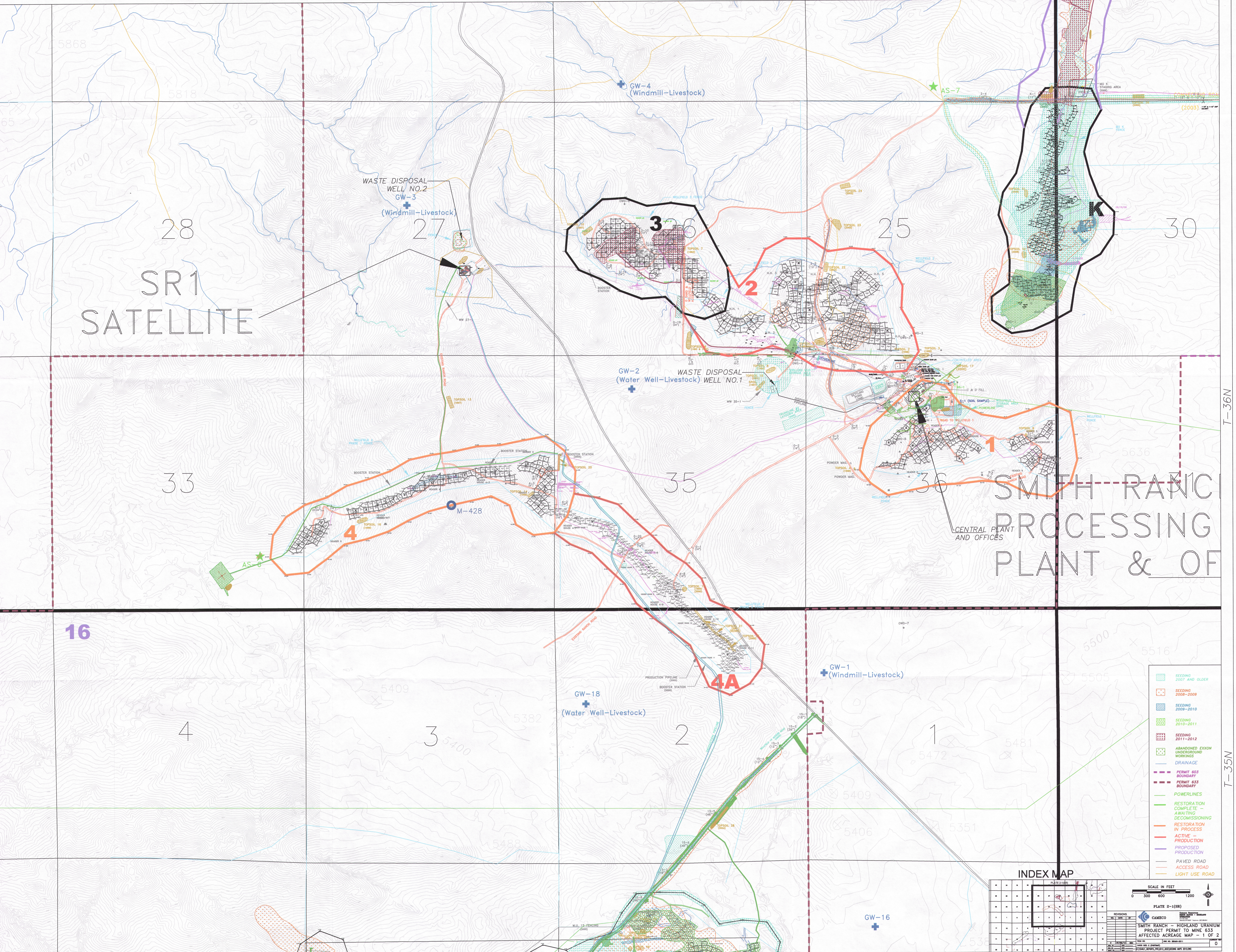


SR1  
SATELLITE

SMITH RANCH  
PROCESSING  
PLANT & OFFICES



WASTE DISPOSAL  
WELL NO.2  
GW-3  
(Windmill-Livestock)

GW-4  
(Windmill-Livestock)

AS-7

3

2

GW-2  
(Water Well-Livestock)

WASTE DISPOSAL  
WELL NO.1

33

35

36

CENTRAL PLANT  
AND OFFICES

16

4

3

2

1

GW-18  
(Water Well-Livestock)

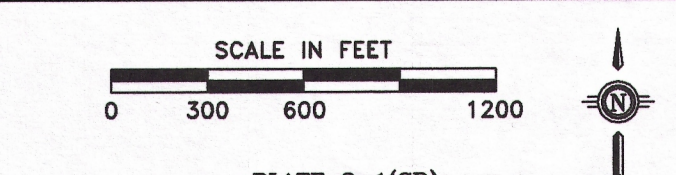
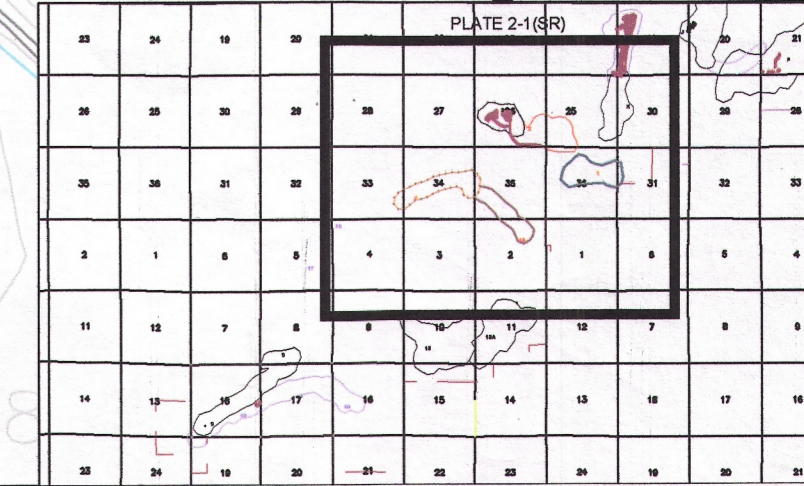
GW-1  
(Windmill-Livestock)

4A

GW-16

- SEEDING 2007 AND OLDER
- SEEDING 2008-2009
- SEEDING 2009-2010
- SEEDING 2010-2011
- SEEDING 2011-2012
- ABANDONED EXON UNDERGROUND WORKINGS
- DRAINAGE
- PERMIT 603 BOUNDARY
- PERMIT 633 BOUNDARY
- POWERLINES
- RESTORATION COMPLETE - AWAITING DECOMMISSIONING
- RESTORATION IN PROCESS
- ACTIVE PRODUCTION
- PROPOSED PRODUCTION
- PAVED ROAD
- ACCESS ROAD
- LIGHT USE ROAD

INDEX MAP



REVISIONS	DATE	BY	DESCRIPTION
1	08/08/11	...	...
2	...	...	...
3	...	...	...
4	...	...	...
5	...	...	...
6	...	...	...
7	...	...	...
8	...	...	...
9	...	...	...
10	...	...	...

SMITH RANCH - HIGHLAND URANIUM  
PROJECT PERMIT TO MINE 633  
AFFECTED ACREAGE MAP - 1 OF 2

R-74W

R-73W

D11