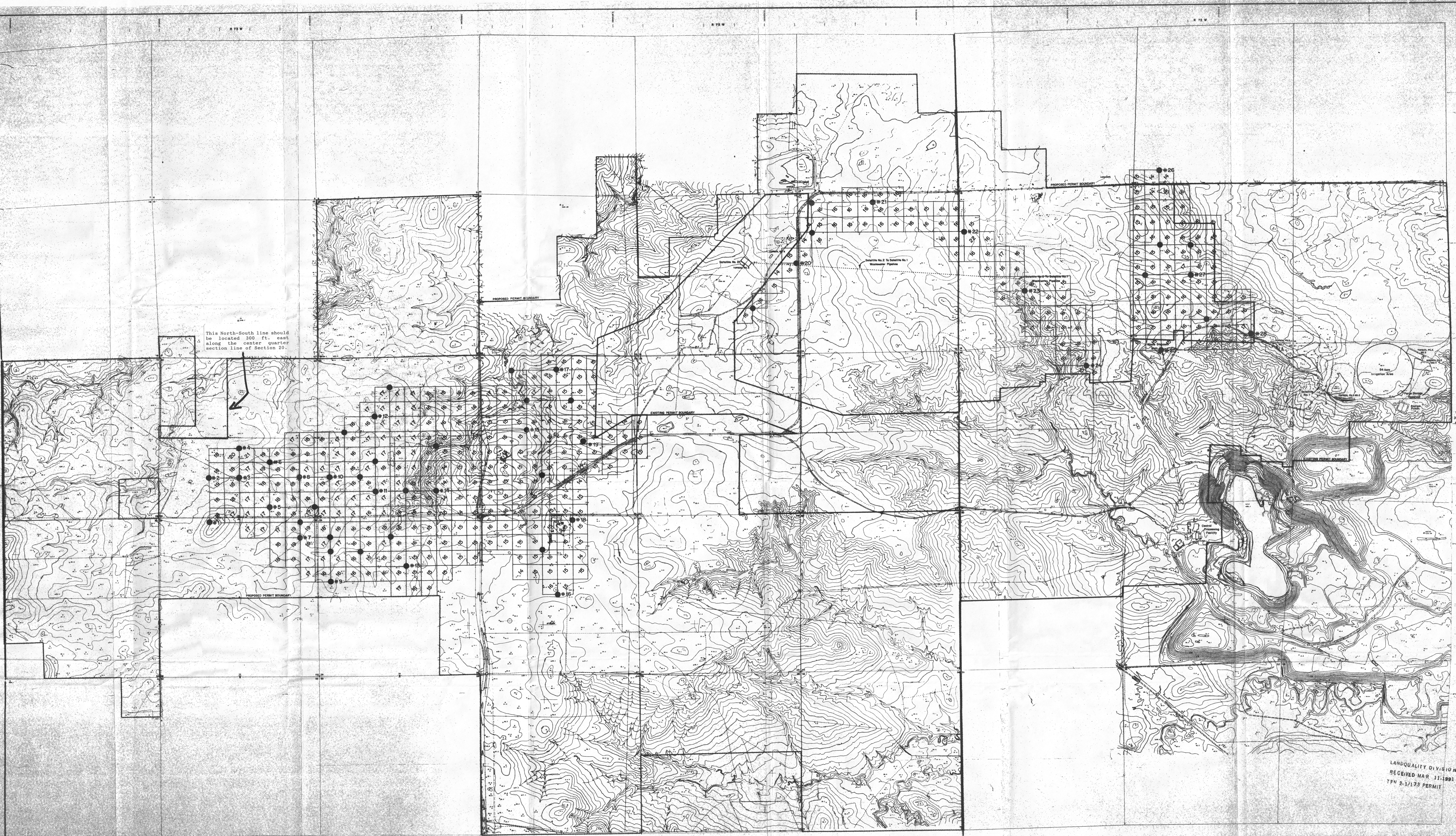


This North-South line should be located 300 ft. east along the center quarter section line of Section 20.



LANDQUALITY DIVISION
RECEIVED MAR 11 1991
TFN 2-1/73 PERMIT

- LEGEND
- ☒ Average JAR / HR Over The Grid (1 M. Above Surface)
 - Soil Sample Location
 - #13 Samples Selected For Analysis

FIGURE A.8-1
POWER RESOURCES, INC.
HIGHLAND URANIUM PROJECT
WEST HIGHLAND AMENDMENT
BASELINE GAMMA SURVEY MAP