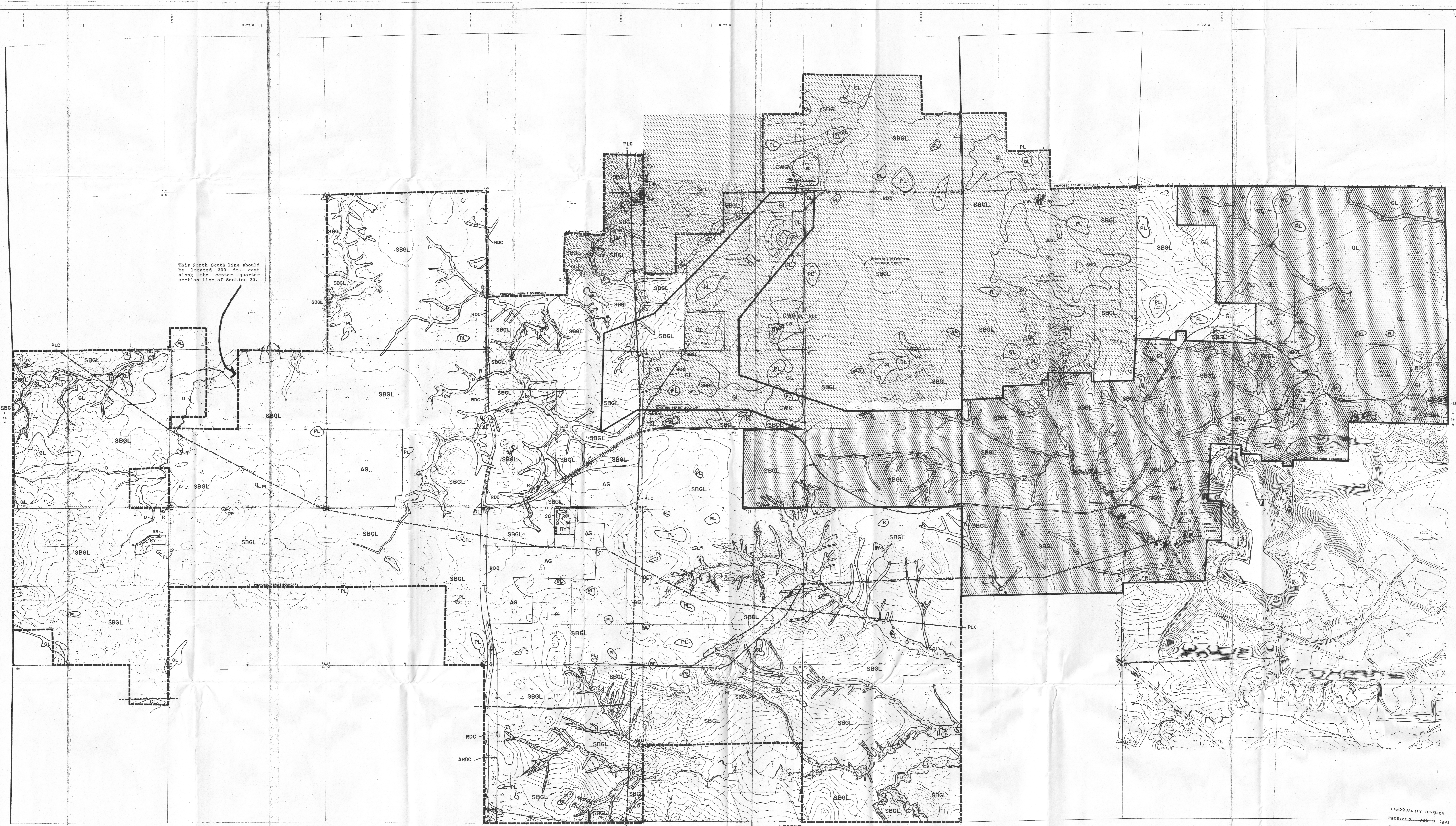


This North-South line should be located 300 ft. east along the center quarter section line of Section 20.



LEGEND

SBGL	Sagebrush Grassland	AG	Agricultural Land	[Hatched Box]	Area covered by North Morton Vegetation Study (Note: Vegetation types are designated differently on this plate than on drawing D8-1-6)
GL	Grassland	R	Reservoir	[Dotted Box]	Area covered by Eggleston, Holmes and Associates Study
D	Drainage	RP	Gravel Pit	[Dashed Line]	Proposed Permit Boundary
PL	Playa	RY	Ranch Yard	[Solid Line]	Existing Permit Boundary
DL	Disturbed Land	CWG	Crested Wheat		
RL	Reclaimed Land				
PLC	Pipeline / Powerline Corridor	T	Topsoil		
RDC	Road Corridor	CW	Cottonwood / Willows		
ARDC	Abandoned flood Corridor	RO	Russian Olive		
SB	Shelterbelt				

1	1	1	1	1
2	2	2	2	2
3	3	3	3	3
4	4	4	4	4
5	5	5	5	5

LANDQUALITY DIVISION
 RECEIVED JUL-6 1991
 T/FN 2 1/173 PERMIT
PLATE D8-1
 POWER RESOURCES, INC.
 HIGH-LAND URBANISM PROJECT
 WEST-HIGHLAND AMENDMENT
 VEGETATION MAP
 SHEET 1 OF 1

D-168